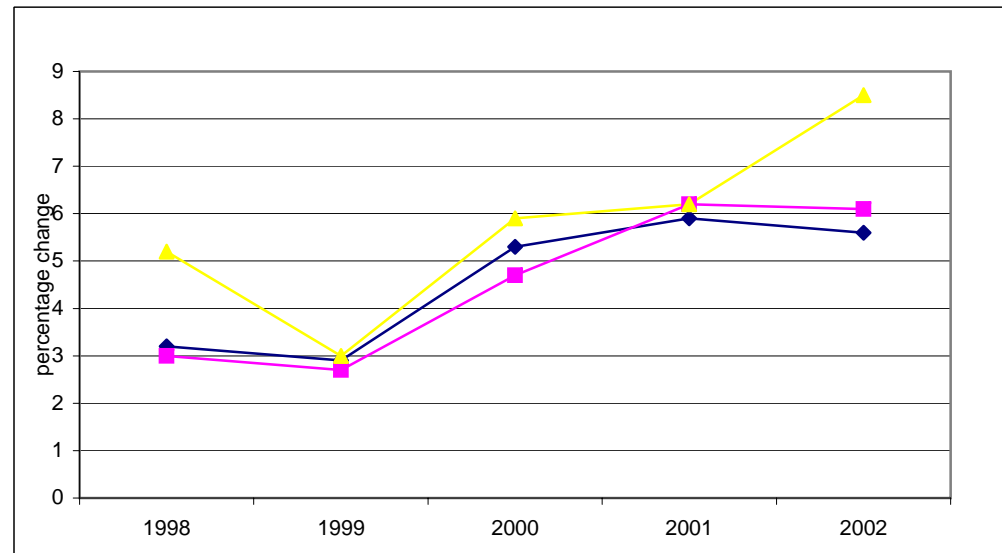


Nova Scotia/Canada Economic Indicators

AUGUST 2005

(compiled September 22, 2005)



Notes:

- (1) Statistics Canada estimate July 1
- (2) Annual average
- a Actual
- sa Seasonally adjusted
- p Preliminary
- pa Preliminary actual
- i Intention
- ri Revised intention

Data Sources:

Population, Vital Statistics, Migration - Statistics Canada, Demographic Estimates Section, Quarterly Demographic Statistics, Catalogue No. 91-002-XPB

Labour Force - Statistics Canada, Labour Statistics Division, Labour Force Survey, monthly Catalogue No. 71-001-XIE; Labour Force Historical Review, Catalogue No. 71F0004XCB

Employment Insurance - Statistics Canada, Labour Statistics Division, Employment Insurance Statistics, monthly

Consumer Price Index - Statistics Canada, Prices Division, The Consumer Price Index, Catalogue 62-001-XPB

Income (Personal Income per Capita, Total Wages & Salaries, Average Weekly Wages) - Statistics Canada, System of National Accounts, Provincial Economic Accounts, quarterly, Catalogue No. 13-213-PPB; Estimates of Labour Income, quarterly, Catalogue No. 13F0016-XPB; Employment, Earnings & Hours, monthly, Catalogue No. 72-002-XIB

Retail/Wholesale - Statistics Canada, Retail Trade, monthly, Catalogue No. 63-005-XPB; New Motor Vehicle Sales, monthly, Catalogue No. 63-007-XPB; Wholesale Trade, monthly, Catalogue No. 63-008-XIB

Commodity Sector - Statistics Canada, Farm Cash Receipts, quarterly, Catalogue No. 21-001-XIB; Sawmills & Planing Mills, monthly, Catalogue No. 35-003-XIB;

Canada's Mineral Production, annual, Catalogue No. 26-202-XIB; Natural Gas Transportation and Distribution, monthly, Catalogue No. 55-002-XIB; Electric Power Statistics, monthly, Catalogue No. 57-001-XIB; Fisheries & Oceans Canada statistics, annual

monthly, Catalogue No. 57-001-XIB; Monthly Survey of Manufacturing Shipments, Catalogue No. 31-001-XPB; Canadian International Merchandise Trade, monthly, Catalogue No. 65-001-XPB

Construction - Statistics Canada, Private and Public Investment in Canada, semi-annual, Catalogue Nos. 61-205-XIB and 61-206-XIB; Building Permits, monthly, Catalogue No. 64-001-XIB; Canada Mortgage and Housing statistics, monthly/quarterly

Gross Domestic Product - Statistics Canada, System of National Accounts, Provincial Economic Accounts, Catalogue No. 13-213-PPB

NOVA SCOTIA ECONOMIC INDICATORS

INDICATOR	Current Reference Period	MONTHLY/QUARTERLY/YEAR-TO-DATE STATISTICS					ANNUAL STATISTICS					
		% Change					Year-over-Year % Change					
		Reference Period					2002 2003 2004 2003/2002 2004/2003					
		2 Years Ago	1 Year Ago	Current	1 Year Ago/ 2 Years Ago	Current/ 1 Year Ago	2002	2003	2004	2003/2002	2004/2003	
POPULATION	Apr 1/2005	935,555	936,902	936,921	0.1	0.0	934,507 (1)	936,165 (1)	936,960 (1)	0.2	0.1	
VITAL STATISTICS												
Births	Jan-Mar/2005	2,088	2,066	2,071	-1.1	0.2	8,663	8,584	8,514	-0.9	-0.8	
Deaths	Jan-Mar/2005	2,074	2,149	2,150	3.6	0.0	7,997	8,191	8,440	2.4	3.0	
Marriages	Jan-Mar/2005	335	335	335	0.0	0.0	4,899	4,878	4,862	-0.4	-0.3	
MIGRATION												
Total Net Migration	Jan-Mar/2005	195	(179)	(538)	--	--	1,068	1,484	244	--	--	
Net Interprovincial	Jan-Mar/2005	113	(603)	(698)	--	--	(256)	427	(954)	--	--	
Net International	Jan-Mar/2005	82	424	160	417.1	-62.3	1,324	1,057	1,198	-20.2	13.3	
Immigration	Jan-Mar/2005	312	393	326	26.0	-17.0	1,422	1,476	1,762	3.8	19.4	
Emigration	Jan-Mar/2005	227	25	166	-89.0	564.0	98	419	564	327.6	34.6	
LABOUR FORCE												
Seasonally Adjusted												
Total Labour Force ('000)	Aug/2005	479.3	484.8	481.0	1.1	-0.8	467.2	474.7	484.3	1.6	2.0	
Employed ('000)	Aug/2005	429.7	441.9	446.3	2.8	1.0	422.4	431.3	441.6	2.1	2.4	
Goods Industries ('000)	Aug/2005	91.3	93.1	92.3	2.0	-0.9	89.9	92.2	93.0	2.6	0.9	
Service Industries ('000)	Aug/2005	338.4	348.8	354.0	3.1	1.5	332.4	339.1	348.6	2.0	2.8	
Unemployment ('000)	Aug/2005	49.6	42.9	34.8	-13.5	-18.9	44.8	43.4	42.7	-3.1	-1.6	
Unemployment Rate (%)	Aug/2005	10.3	8.8	7.2	--	--	9.6	9.1	8.8	--	--	
Participation Rate (%)	Aug/2005	63.6	64.0	63.2	--	--	62.5	63.1	64.0	--	--	
Actual												
Employed ('000)	Aug/2005	444.7	457.1	462.0	2.8	1.1	422.4	431.3	441.6	2.1	2.4	
Unemployment Rate (%)	Aug/2005	9.8	8.5	6.9	--	--	9.6	9.1	8.8	--	--	

NOVA SCOTIA ECONOMIC INDICATORS

INDICATOR	Current Reference Period	MONTHLY/QUARTERLY/YEAR-TO-DATE STATISTICS					ANNUAL STATISTICS				
		% Change					Year-over-Year % Change				
		Reference Period									
		2 Years Ago	1 Year Ago	Current	1 Year Ago/ 2 Years Ago	Current/ 1 Year Ago	2002	2003	2004	2003/2002	2004/2003
EMPLOYMENT INSURANCE BENEFITS (EI)											
Total Beneficiaries (#)	June/2005	32,130	30,920	32,450	-3.8	4.9	40,689 (2)	40,698 (2)	40,941 (2)	0.0	0.6
Total Benefits Paid (\$'000)	June/2005	47,195	38,318	40,475	-18.8	5.6	661,365	680,374	678,533	2.9	-0.3
CONSUMER PRICE INDEX (1992=100)											
Nova Scotia											
All-Items	Aug/2005	124.1	126.6	130.4	2.0	3.0	119.8	123.9	126.1	3.4	1.8
Food	Aug/2005	122.8	126.4	129.8	2.9	2.7	119.9	122.5	125.3	2.2	2.3
Shelter	Aug/2005	121.9	125.0	130.3	2.5	4.2	117.2	122.3	125.4	4.4	2.5
INCOME											
Personal Income Per Capita (\$)	2004	25,447	26,269	27,092	3.2	3.1	25,447	26,269	27,092	3.2	3.1
Total Wages & Salaries (\$ millions)	Jan-June/2005	6,400.0	6,568.4	6,898.3	2.6	5.0	12,539.6	12,997.2	13,368.9	3.6	2.9
Average Weekly Wages & Salaries (\$)	June/2005	595.88	614.97	642.13	3.2	4.4	590.68	597.08	611.93	1.1	2.5
RETAIL/WHOLESALE TRADE											
All Retail Outlets (\$ millions) (sa)	Jan-July/2005	5,837.6	5,980.6	6,187.9	2.4	3.5	9,839.5	10,014.9	10,296.5	1.8	2.8
Dept. Store Sales (\$ millions) (a)	Jan-July/2005	333.3	362.9	379.9	8.9	4.7	658.5	710.2	744.2	7.9	4.8
New Motor Vehicle Sales (\$ millions) (a)	Jan-July/2005	820.5	805.2	853.0	(1.9)	5.9	1,288.8	1,313.1	1,282.2	1.9	-2.4
Wholesale Trade (\$millions) (sa)	Jan-July/2005	3,768.7	3,526.2	3,582.0	(6.4)	1.6	6,225.3	6,439.0	6,040.9	3.4	-6.2

NOVA SCOTIA ECONOMIC INDICATORS

INDICATOR	Current Reference Period	MONTHLY/QUARTERLY/YEAR-TO-DATE STATISTICS					ANNUAL STATISTICS				
		% Change					Year-over-Year % Change				
		2 Years Ago	1 Year Ago	Current	Reference Period		2002	2003	2004	2003/2002	2004/2003
			1 Year Ago/	Current/							
COMMODITY SECTORS											
Farm Cash Receipts (\$ millions)	Jan-June/2005	190.7	219.8	218.0	15.3	-0.8	404.7	424.8	451.4	5.0	6.3
Fish Landings (\$ millions)	Jan-Dec/2004	801.1	825.9	697.6 p	3.1	-15.5	801.1	825.9	697.6 p	3.1	-15.5
Lumber Production (000m3)	Jan-June/2005	901.3	851.4	875.7	-5.5	2.9	1,871.6	1,680.3	1,784.5	-10.2	6.2
Mineral Production ⁽¹⁾ (\$ millions)	2004	-- --	263.2	278.3	-- --	5.7	-- --	263.2	278.3	-- --	5.7
Marketable Gas Receipts (million m3)	Jan-Mar/2005	1,106.7	1,151.7	939.7	4.1	-18.4	5,209.4	4,469.5	4,174.1	-14.2	-6.6
Power Generation (GW.h)	Jan-June/2005	6,418.3	6,482.9	6,405.3	1.0	-1.2	12,126.9	12,386.9	12,563.8	2.1	1.4
Manufacturing Shipments (\$ millions)	Jan-July/2005	4,962.7	5,267.5	5,516.2	6.1	4.7	8,441.9	8,642.5	9,281.1	2.4	7.4
Foreign Exports (\$ millions)	Jan-July/2005	3,239.6	3,286.4	3,064.5	1.4	-6.8	5,226.0	5,349.3	5,479.1	2.4	2.4
Foreign Imports (\$ millions)	Jan-July/2005	3,459.0	3,944.4	4,123.1	14.0	4.5	5,140.0	5,783.9	6,591.9	12.5	14.0
CONSTRUCTION											
Capital Construction											
Expenditures (\$ millions)	2005	3,441.9	3,615.4 pa	3,589.5 l	5.0	-0.7	3,241.6	3,441.9	3,615.4 pa	6.2	5.0
Building Permits (\$ millions)	Jan-July/2005	626.7	680.2	679.0 p	8.5	-0.2	877.3	1,014.1	1,125.8	15.6	11.0
Housing Starts Centres 10,000+											
Starts (units)	Jan-June/2005	1,490	1,448	1,428	-2.8	-1.4	3,721	3,589	3,313	-3.5	-7.7
Completions (units)	Jan-June/2005	1,337	1,411	1,030	5.5	-27.0	2,955	3,634	3,526	23.0	-3.0
All Areas											
Starts (units)	Jan-June/2005	2,069	1,899	1,998	-8.2	5.2	4,970	5,096	4,717	2.5	-7.4
Completions (units)	Jan-June/2005	2,343	2,006	1,733	-14.4	-13.6	4,011	5,434	4,896	35.5	-9.9
Under Construction (units)	June 30/2005	2,885	2,729	2,856	-5.4	4.7	3,119	2,770	2,653	-11.2	-4.2
GROSS DOMESTIC PRODUCT											
Real GDP (chained '97 \$ millions)	2004	24,874	25,180	25,500	1.2	1.3	24,874	25,180	25,500	1.2	1.3

⁽¹⁾ Excludes oil and gas.

CANADA ECONOMIC INDICATORS

INDICATOR	Current Reference Period	MONTHLY/QUARTERLY/YEAR-TO-DATE STATISTICS					ANNUAL STATISTICS				
		% Change					Year-over-Year % Change				
		Reference Period									
		2 Years Ago	1 Year Ago	Current	1 Year Ago/ 2 Years Ago	Current/ 1 Year Ago	2002	2003	2004	2003/2002	2004/2003
POPULATION	Apr 1/2005	31,568,029	31,857,453	32,146,547	0.9	0.9	31,372,587 (1)	31,660,466 (1)	31,946,316 (1)	0.9	0.9
VITAL STATISTICS											
Births	Jan-Mar/2005	79,197	79,571	80,491	0.5	1.2	328,802	330,919	331,517	0.6	0.2
Deaths	Jan-Mar/2005	58,728	62,215	63,570	5.9	2.2	223,603	227,285	234,593	1.6	3.2
Marriages	Jan-Mar/2005	14,408	14,715	14,866	2.1	1.0	146,738	145,048	146,377	-1.2	0.9
MIGRATION											
Total Net Migration	Jan-Mar/2005	50,809	51,462	50,807	1.3	-1.3	209,104	188,250	193,260	-10.0	2.7
Immigration	Jan-Mar/2005	45,567	54,924	56,429	20.5	2.7	229,071	221,402	235,847	-3.3	6.5
Emigration	Jan-Mar/2005	(5,242)	3,462	5,622	--	62.4	19,967	33,152	42,587	66.0	28.5
LABOUR FORCE											
Seasonally Adjusted											
Total Labour Force ('000)	Aug/2005	16,982.5	17,193.9	17,377.6	1.2	1.1	16,580.1	16,954.0	17,183.4	2.3	1.4
Employed ('000)	Aug/2005	15,643.4	15,967.1	16,200.7	2.1	1.5	15,307.9	15,665.1	15,949.7	2.3	1.8
Goods Industries ('000)	Aug/2005	3,921.2	4,011.5	4,024.9	2.3	0.3	3,881.4	3,930.6	3,992.7	1.3	1.6
Service Industries ('000)	Aug/2005	11,722.2	11,955.6	12,175.8	2.0	1.8	11,426.5	11,734.4	11,957.0	2.7	1.9
Unemployment ('000)	Aug/2005	1,339.1	1,226.8	1,176.9	-8.4	-4.1	1,272.2	1,288.9	1,233.7	1.3	-4.3
Unemployment Rate (%)	Aug/2005	7.9	7.1	6.8	--	--	7.7	7.6	7.2	--	--
Participation Rate (%)	Aug/2005	67.6	67.4	67.2	--	--	66.9	67.5	67.6	--	--
Actual											
Employed ('000)	Aug/2005	15,966.4	16,268.3	16,507.3	1.9	1.5	15,307.9	15,665.1	15,949.7	2.3	1.8
Unemployment Rate (%)	Aug/2005	8.1	7.4	7.1	--	--	7.7	7.6	7.2	--	--

CANADA ECONOMIC INDICATORS

INDICATOR	Current Reference Period	MONTHLY/QUARTERLY/YEAR-TO-DATE STATISTICS					ANNUAL STATISTICS					
		% Change					Year-over-Year % Change					
		2 Years Ago	1 Year Ago	Current	Reference Period		2002	2003	2004	2003/2002	2004/2003	
			1 Year Ago/	Current/								
EMPLOYMENT INSURANCE BENEFITS (EI)												
Total Beneficiaries (#)	June/2005	714,620	693,840	680,230	p	-2.9	-2.0	828,723 (2)	841,279 (2)	826,525 (2)	1.5	-1.8
Total Benefits Paid (\$'000)	June/2005	1,175,078	1,082,807	995,337		-7.9	-8.1	14,683,220	14,950,569	14,970,341	1.8	0.1
CONSUMER PRICE INDEX (1992=100)												
Canada												
All-Items	Aug/2005	122.5	124.8	128.0		1.9	2.6	119.0	122.3	124.6	2.8	1.9
Food	Aug/2005	122.1	125.3	128.5		2.6	2.6	120.3	122.4	124.9	1.7	2.0
Shelter	Aug/2005	117.7	120.9	124.4		2.7	2.9	113.8	117.5	120.5	3.3	2.6
INCOME												
Personal Income Per Capita (\$)	2004	28,620	29,204	30,125		2.0	3.2	28,620	29,204	30,125	2.0	3.2
Total Wages & Salaries (\$ millions)	Jan-June/2005	268,070.5	278,251.2	290,747.4		3.8	4.5	521,567.6	541,741.1	563,149.2	3.9	4.0
Average Weekly Wages & Salaries (\$)	June/2005	691.98	710.29	735.79		2.6	3.6	680.87	690.35	705.68	1.4	2.2
RETAIL/WHOLESALE TRADE												
All Retail Outlets (\$ millions) (sa)	Jan-July/2005	191,967.4	199,854.5	214,030.6		4.1	7.1	319,525.4	331,146.6	346,721.5	3.6	4.7
Dept. Store Sales (\$ millions) (a)	Jan-July/2005	10,891.5	11,681.2	11,996.9		7.3	2.7	20,959.9	21,681.2	22,832.4	3.4	5.3
New Motor Vehicle Sales (\$ millions) (a)	Jan-July/2005	30,228.2	29,379.8	31,724.4		(2.8)	8.0	52,227.5	50,493.3	49,639.2	(3.3)	-1.7
Wholesale Trade (\$millions) (sa)	Jan-July/2006	245,757.8	259,202.1	275,369.4		5.5	6.2	411,527.4	421,234.6	450,300.9	2.4	6.9

CANADA ECONOMIC INDICATORS

INDICATOR	Current Reference Period	MONTHLY/QUARTERLY/YEAR-TO-DATE STATISTICS					ANNUAL STATISTICS							
		% Change					Year-over-Year % Change							
		2 Years Ago	1 Year Ago	Current	Reference Period		2002	2003	2004	2003/2002	2004/2003			
			1 Year Ago/	Current/										
COMMODITY SECTORS														
Farm Cash Receipts (\$ millions)	Jan-June/2005	16,861.9	18,178.8	18,898.1	7.8	4.0	36,177.4	34,457.8	36,543.1	-4.8	6.1			
Fish Landings (\$ millions)	Jan-Dec/2004	2,177.0	2,231.4	2,177.6	p	2.5	-2.4	2,177.0	2,231.4	2,177.6	p	2.5	-2.4	
Lumber Production (000m3)	Jan-June/2005	40,973.1	42,127.2	42,326.9	2.8	0.5	79,803.7	78,300.2	83,511.9	-1.9	6.7			
Mineral Production ⁽¹⁾ (\$ millions)	2004	19,918.0	20,077.2	24,167.6	0.8	20.4	19,918.0	20,077.2	24,167.6	0.8	20.4			
Marketable Gas Receipts (million m3)	Jan-Mar/2005	43,866.6	43,646.1	43,853.7	-0.5	0.5	172,113.1	166,395.6	167,283.0	-3.3	0.5			
Power Generation (GW.h)	Jan-June/2005	291,561.5	285,064.9	297,289.0	-2.2	4.3	581,062.9	564,203.0	568,436.1	-2.9	0.8			
Manufacturing Shipments (\$ millions)	Jan-July/2005	318,316.4	339,136.5	349,339.6	6.5	3.0	551,693.0	546,770.2	593,452.5	-0.9	8.5			
Foreign Exports (\$ millions)	Jan-July/2005	208,658.1	224,711.6	227,203.5	7.7	1.1	365,290.9	354,098.0	385,033.5	-3.1	8.7			
Foreign Imports (\$ millions)	Jan-July/2005	199,928.1	204,822.8	217,226.8	2.4	6.1	348,849.1	335,962.3	355,566.7	-3.7	5.8			
CONSTRUCTION														
Capital Construction														
Expenditures (\$ millions)	2005	136,763.6	150,501.8	pa	158,843.3	i	10.0	5.5	126,034.1	136,763.6	150,501.8	pa	8.5	10.0
Building Permits (\$ millions)	Jan-July/2005	29,770.3	32,263.0	34,102.1	8.4	5.7	47,262.1	50,772.0	55,578.6	7.4	9.5			
Housing Starts Centres 10,000+														
Starts (units)	Jan-June/2005	86,012	95,625	90,616	11.2	-5.2	179,126	191,907	204,392	7.1	6.5			
Completions (units)	Jan-June/2005	78,033	81,836	86,127	4.9	5.2	161,310	173,956	188,345	7.8	8.3			
All Areas														
Starts (units)	Jan-June/2005	97,420	106,760	104,267	9.6	-2.3	205,034	218,426	233,431	6.5	6.9			
Completions (units)	Jan-June/2005	88,600	93,944	98,741	6.0	5.1	185,626	199,244	215,621	7.3	8.2			
Under Construction (units)	June 30/2005	127,883	150,261	160,936	17.5	7.1	119,210	137,774	155,230	15.6	12.7			
GROSS DOMESTIC PRODUCT														
Real GDP (chained '97 \$ millions)	2004	1,074,621	1,096,359	1,126,625	2.0	2.8	1,074,621	1,096,359	1,126,625	2.0	2.8			

⁽¹⁾ Excludes oil and gas.