



# NASS

FACT FINDERS FOR AGRICULTURE  
UNITED STATES DEPARTMENT OF AGRICULTURE

Washington, D.C.

# Cattle

---

Released July 21, 2006, by the National Agricultural Statistics Service (NASS), Agricultural Statistics Board, U.S. Department of Agriculture. For information on *Cattle* call Mike Miller at 202-720-3040, office hours 7:30 a.m. to 4:00 p.m. ET.

## July 1 Cattle Inventory Up 1 Percent

**All cattle and calves** in the United States as of July 1, 2006, totaled 105.7 million head, 1 percent above the 104.5 million on July 1, 2005 and 2 percent above the 103.4 million two years ago.

**All cows and heifers** that have calved, at 43.0 million, were up slightly from the 42.8 million on July 1, 2005 and 1 percent above the 42.4 million two years ago.

- **Beef cows**, at 33.9 million, were up slightly from July 1, 2005 and up 1 percent from two years ago.
- **Milk cows**, at 9.15 million, were up 1 percent from July 1, 2005 and up 2 percent from two years ago.

Other class estimates on July 1, 2006 and the changes from July 1, 2005, are as follows:

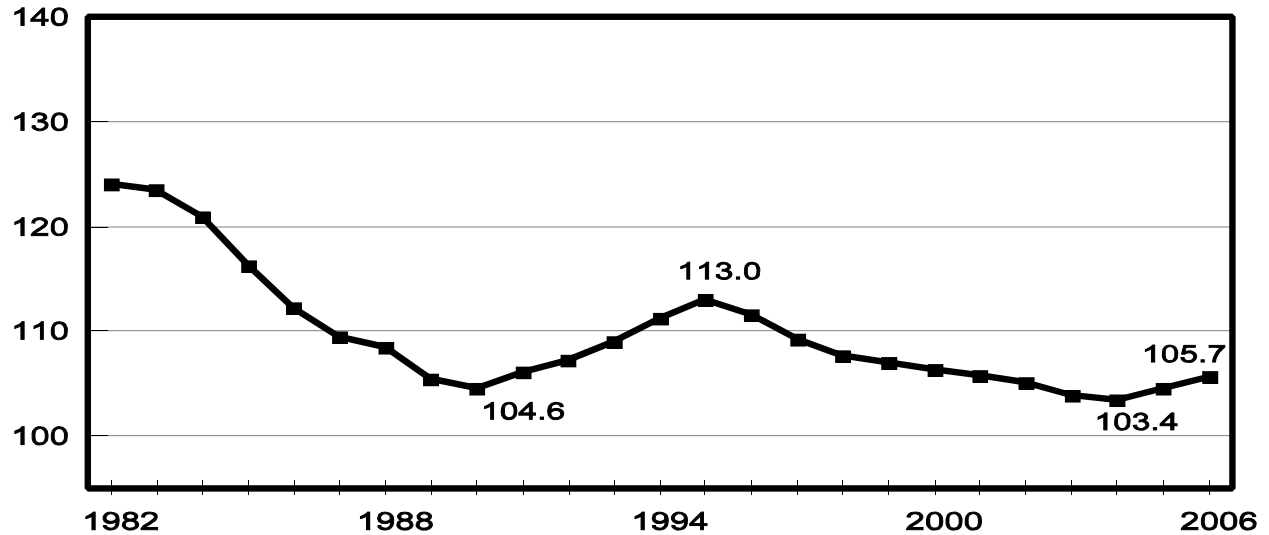
- **All heifers 500 pounds and over**, 16.5 million, up 2 percent.
- **Beef replacement heifers**, 5.0 million, unchanged.
- **Milk replacement heifers**, 3.8 million, up 3 percent.
- **Other heifers**, 7.7 million, up 3 percent.
- **Steers weighing 500 pounds and over**, 14.9 million, up 3 percent.
- **Bulls weighing 500 pounds and over**, 2.1 million, unchanged.
- **Calves under 500 pounds**, 29.2 million, up 1 percent.
- **All cattle and calves on feed for slaughter**, 12.5 million, up 4 percent.

## Calf Crop Up Slightly

The 2006 calf crop is expected to be 37.9 million, up slightly from 2005 and up 1 percent from 2004. Calves born during the first half of the year are estimated at 27.6 million, up 1 percent from 2005 and up 1 percent from 2004.

### United States Cattle Inventory July 1, 1982 - 2006

Million Head



---

This report was approved on July 21, 2006.

Acting Secretary of  
Agriculture  
Charles F. Conner

Agricultural Statistics Board  
Chairperson  
Carol C. House

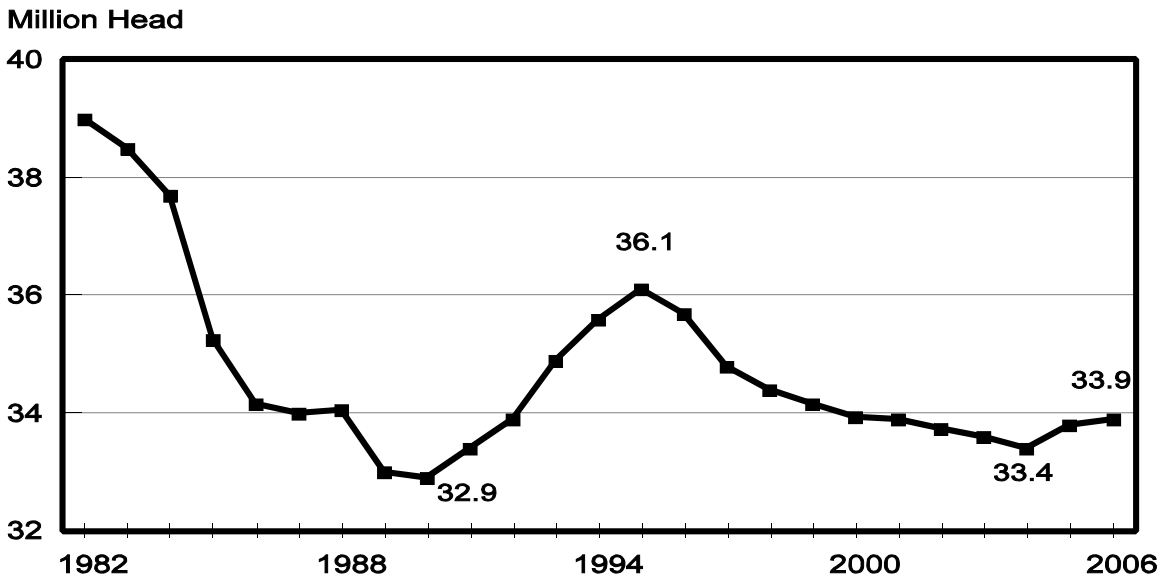
**Cattle and Calves: Number by Class and Calf Crop,  
United States, July 1, 2004-2006**

Class	2004	2005	2006	2006 as % of 2005
	<i>1,000 Head</i>	<i>1,000 Head</i>	<i>1,000 Head</i>	<i>Percent</i>
Cattle and Calves	103,400	104,500	105,700	101
Cows and Heifers That Have Calved	42,400	42,800	43,000	100
Beef Cows	33,400	33,750	33,850	100
Milk Cows	9,000	9,050	9,150	101
Heifers 500 Pounds and Over	15,950	16,200	16,500	102
For Beef Cow Replacement	4,800	5,000	5,000	100
For Milk Cow Replacement	3,600	3,700	3,800	103
Other Heifers	7,550	7,500	7,700	103
Steers 500 Pounds and Over	14,200	14,400	14,900	103
Bulls 500 Pounds and Over	2,050	2,100	2,100	100
Calves Under 500 Pounds	28,800	29,000	29,200	101
Calf Crop	37,505	37,780	37,900	100
Cattle on Feed	11,800	12,000	12,500	104

**Calf Crop: Number and Percent of Total by Six-Month Period,  
United States, 2004-2005 and Preliminary Calf Crop, 2006**

Period	2004		2005		2006	
	Number	% of Total	Number	% of Total	Number	% of Total
	<i>1,000 Hd</i>	<i>Percent</i>	<i>1,000 Hd</i>	<i>Percent</i>	<i>1,000 Hd</i>	<i>Percent</i>
Jan 1 - Jun 30	27,300	72.8	27,430	72.6	27,600	72.8
Jul 1 - Dec 31	10,205	27.2	10,350	27.4	10,300	27.2
Total	37,505	100.0	37,780	100.0	37,900	100.0

**United States Beef Cow Inventory  
July 1, 1982 - 2006**



## Reliability of July 1 Cattle and Calves Estimates

**Survey Procedures:** A random sample of U.S. producers was surveyed to provide data for these estimates. Survey procedures ensured that all cattle producers, regardless of size, had a chance to be included in the survey. Data were collected during the first half of June from about 40,000 small and medium sized operations. These operators were contacted by face-to-face personal interviews. About 10,000 large producers and feedlots were contacted during the first half of July by mail, telephone, and face-to-face personal interviews. Operators were asked to report inventories as of the first of the month and calf crop for the entire year of 2006.

**Estimating Procedures:** These cattle estimates were prepared by the Agricultural Statistics Board after reviewing National and State indications and analysis. National and State survey data were reviewed for reasonableness with each other and with estimates from the previous year using a balance sheet. The balance sheet begins with the previous inventory estimate, adds to it estimates of births and imports for the first six months, and subtracts estimates of slaughter, exports, and deaths for the first six months of the current year. This indicated ending inventory level is compared to the Agricultural Statistics Board estimate for reasonableness.

**Revision Policy:** Revisions to previous estimates are made to improve year to year and item to item relationships. Estimates for the previous year are subject to revision when current estimates are made and when the January 1 cattle inventory estimates are made. The reviews are primarily based on livestock slaughter and additional foreign trade and survey data. Estimates will also be reviewed after data from the five-year Census of Agriculture are available. No revisions will be made after that date.

**Reliability:** Since all cattle operators are not included in the sample, survey estimates are subject to sampling variability. Survey results are also subject to non-sampling errors such as omissions, duplications, and mistakes in reporting, recording, and processing the data. The effects of these errors cannot be measured directly. They are minimized through rigid quality controls in the data collection process and through a careful review of all reported data for consistency and reasonableness.

To assist users in evaluating the reliability of estimates in this report, the "**Root Mean Square Error**" is shown for selected items in the following table. The "Root Mean Square Error" is a statistical measure based on past performance and is computed using the differences between first and latest estimates. The "Root Mean Square Error" for cattle inventory estimates over the past 20 years is 0.5 percent. This means that chances are 2 out of 3 that the final estimate will not be above or below the current estimate of 105.7 million head by more than 0.5 percent. Chances are 9 out of 10 that the difference will not exceed 0.8 percent.

The table below also shows a 20 year record of the range of differences between first and latest estimates for selected items. Using estimates of all cattle and calves as an example, changes between the first inventory estimate and the latest estimate during the past 20 years have averaged 347,000 head, ranging from 0 to 1,300,000 head. During this period the initial inventory estimate has been below the latest estimate 4 times, above the latest estimate 11 times, and unchanged 5 times. This does not imply that the July 1 estimate is likely to understate or overstate final inventory.

**Reliability of July 1 Cattle Estimates <sup>1 2</sup>**

Item	Root Mean Square Error	90 Percent Confidence Level		Difference Between First and Latest Estimates			Number of Years	
		Percent	Head	Average	Smallest	Largest	First Above Latest	First Below Latest
	<i>Percent</i>	<i>Percent</i>	<i>1,000 Head</i>	<i>1,000 Head</i>	<i>1,000 Head</i>	<i>1,000 Head</i>	<i>Number</i>	<i>Number</i>
All Cattle	0.5	0.8	891	347	0	1,300	11	4
All Cows	0.8	1.4	610	193	0	1,100	8	5
Calf Crop	1.5	2.6	967	448	23	1,236	15	5

<sup>1</sup> Based on data from July 1986 through July 2005.

<sup>2</sup> Data in the above table do not reflect the 1-3 percent changes made during the 1989-93 historic revision period. The root mean square error's would be about 1 percentage point higher if these were included.

### Information Contacts

Listed below are the commodity specialists in the Livestock Branch of the National Agricultural Statistics Service to contact for additional information.

- Dan Kerestes, Chief, Livestock Branch ..... (202) 720-3570
- William Weaver, Head, Livestock Section ..... (202) 720-3570
  - Bruce Boess - Hogs and Pigs ..... (202) 720-3106
  - Shawn Clark - Dairy Products ..... (202) 690-3236
  - Jason Hardegree - Milk Production and Milk Cows ..... (202) 720-3278
  - Scott Hollis - Sheep & Lambs, Goats ..... (202) 720-4751
  - Mike Miller - Cattle, Cattle on Feed ..... (202) 720-3040
  - Katy Paulsen - Livestock Slaughter ..... (515) 284-4340
  - Charmaine Wilson - Dairy Products Prices ..... (202) 690-2168

## ACCESS TO REPORTS!!

---

For your convenience, there are several ways to obtain NASS reports, data products, and services:

### INTERNET ACCESS

All NASS reports are available free of charge on the worldwide Internet. For access, connect to the Internet and go to the NASS Home Page at: [www.nass.usda.gov](http://www.nass.usda.gov).

### E-MAIL SUBSCRIPTION

All NASS reports are available by subscription free of charge direct to your e-mail address. Starting with the NASS Home Page at [www.nass.usda.gov](http://www.nass.usda.gov), under the right navigation, *Receive reports by Email*, click on **National** or **State**. Follow the instructions on the screen.

-----

### PRINTED REPORTS OR DATA PRODUCTS

**CALL OUR TOLL-FREE ORDER DESK: 800-999-6779 (U.S. and Canada)**  
**Other areas, please call 703-605-6220      FAX: 703-605-6900**  
**(Visa, MasterCard, check, or money order acceptable for payment.)**

-----

### ASSISTANCE

For **assistance** with general agricultural statistics or further information about NASS or its products or services, contact the **Agricultural Statistics Hotline** at **800-727-9540**, 7:30 a.m. to 4:00 p.m. ET, or e-mail: [nass@nass.usda.gov](mailto:nass@nass.usda.gov).

The U.S. Department of Agriculture (USDA) prohibits discrimination in all its programs and activities on the basis of race, color, national origin, age, disability, and where applicable, sex, marital status, familial status, parental status, religion, sexual orientation, genetic information, political beliefs, reprisal, or because all or part of an individual's income is derived from any public assistance program. (Not all prohibited bases apply to all programs.) Persons with disabilities who require alternative means for communication of program information (Braille, large print, audiotape, etc.) should contact USDA's TARGET Center at (202) 720-2600 (voice and TDD).

To file a complaint of discrimination, write to USDA, Director, Office of Civil Rights, 1400 Independence Avenue, S.W., Washington, D.C. 20250-9410, or call (800) 795-3272 (voice) or (202) 720-6382 (TDD). USDA is an equal opportunity provider and employer.