

**PUBLIC OPEN HOUSE  
COMMUNITY DESIGN PLAN  
ROCKCLIFFE REDEVELOPMENT**

**TUESDAY JUNE 27, 2006**



**CANADA LANDS COMPANY  
SOCIÉTÉ IMMOBILIÈRE DU CANADA**

# Introduction

## PURPOSE OF PRESENTATION

- Introduce CLC
- Overview of CLC Projects
- Initiate – Planning process for Rockcliffe Redevelopment



# Core Activities

- Property development and sales
- Environmental remediation
- Build-to-suit construction
- Property Management
- Tourism and hospitality

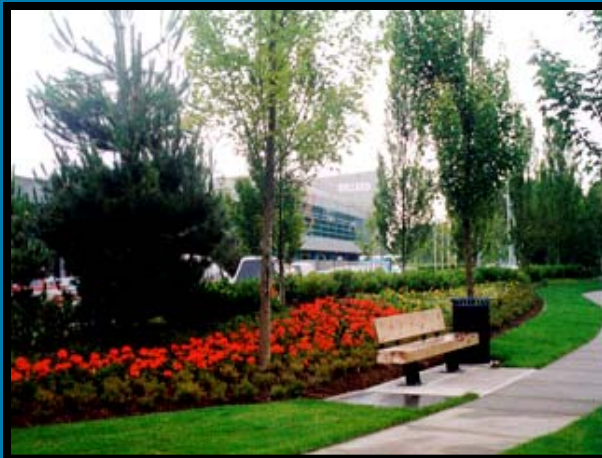


# CLC Attributes

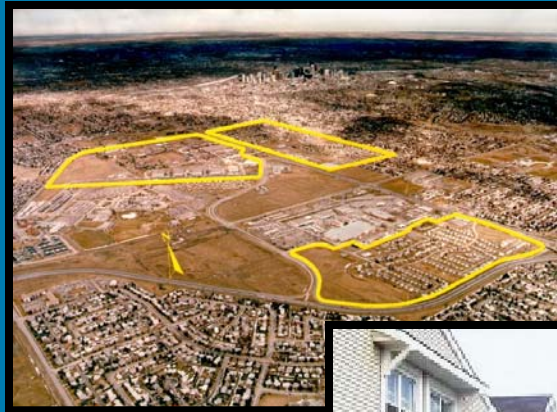
- Purchases property at market value
- Pays all applicable taxes
- No appropriations
- Pays dividends to the government
- Subject to municipal planning
- Innovation – Value - Legacy



# Glenlyon Business Park, Burnaby



# Garrison Woods, Calgary



# Benny Farm, Montréal



# Legacy



**Mrs. Griesbach, Edmonton**



**Veteran's Park, Ottawa**



**Peace Keepers Legacy, Calgary**





# The Rockcliffe Site



## Important Dates

- **November 2005**  
Transfer Approved by Treasury Board
- **May/June 2006**  
Finalize consulting team selection
- **June 27, 2006**  
Open House
- **Summer 2006**  
CLC becomes Owner



# Rockcliffe Team



**Jim Lynes**  
Acting President  
& CEO

**Paul Page**  
General Manager,  
Real Estate, NCR

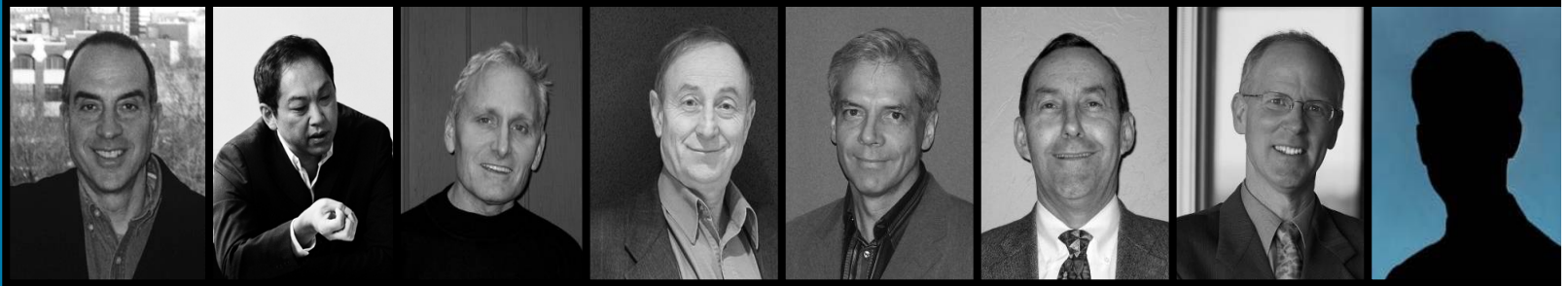
**Rick Hughes**  
Project Manager

**John Dalziel**  
Director Project  
Management

**Rick Legault**  
Finance, Marketing  
Manager



# Innovation Team



**Ken Greenberg**  
Greenberg  
Consultant Inc.  
Urban Design

**Bruce  
Kuwabara**  
KPMB Architects  
Architect

**Greg  
Smalenberg**  
Phillips  
Farevaag  
Smalenberg  
Landscape

**Barry Padolsky**  
BPA Architects  
Urban Design  
and Heritage

**Ron Jack**  
Delcan  
Corporation  
Transportation

**Bob Wingate**  
IBI Group  
Municipal

**Peter Halsall**  
Halsall  
Engineers  
Sustainability

**Ecology TBA**



**KING JAMES PLACE**  
TORONTO, ON

**RICHMOND CITY HALL**  
RICHMOND, BC



**VAUGHAN CIVIC CENTRE**  
VAUGHAN, ON



**STRATHCONA HEIGHTS**  
OTTAWA, ON



# Community Design Plan

- **City of Ottawa process Draft Terms of Reference – Community Design Plan**
- **Assume 18 month schedule**
- **Followed by Plan of Subdivision and Rezoning**



# Community Design Plan

- **Public Advisory Committee**
- **Technical Advisory Committee**
- **Community groups will have member(s)**
- **Public Open Houses**
- **Issue Workshops**
- **Web Site (Summer 2006)**



## Contacts



**Rick Hughes,**  
Project Manager

613-998-7308, [rhughes@clc.ca](mailto:rhughes@clc.ca)



**Barry Padolsky,**  
Prime Consultant

613-241-7198, [email@padolsky-architects.com](mailto:email@padolsky-architects.com)



# The Rockcliffe Site

RCAF Station Rockcliffe's official crest – approved by Her Majesty Queen Elizabeth II in 1960.

**Durabilis:**  
that which is durable or sustained

