

Urban Context Aerial Photograph / Photo aérienne du contexte urbain

After serving as one of Canada's military bases since the 1890's, the Rockcliffe site is recognized as the last major redevelopment opportunity within Ottawa's greenbelt. Overlooking the Ottawa River, just 5km from Parliament Hill, this generous 335 acre (135 ha) property is a unique resource, deserving of special care and stewardship.

Le site de Rockcliffe, qui a abrité l'une des bases militaires du Canada à partir des années 1890, est reconnu comme l'une des possibilités de réaménagement les plus intéressantes dans la ceinture verte d'Ottawa. Surplombant la rivière des Outaouais, à 5 km à peine de la colline du parlement, cette ample propriété de 335 acres (135 hectares) est une ressource unique, méritant une gestion et une attention particulières.



CANADA LANDS COMPANY
SOCIÉTÉ IMMOBILIÈRE DU CANADA

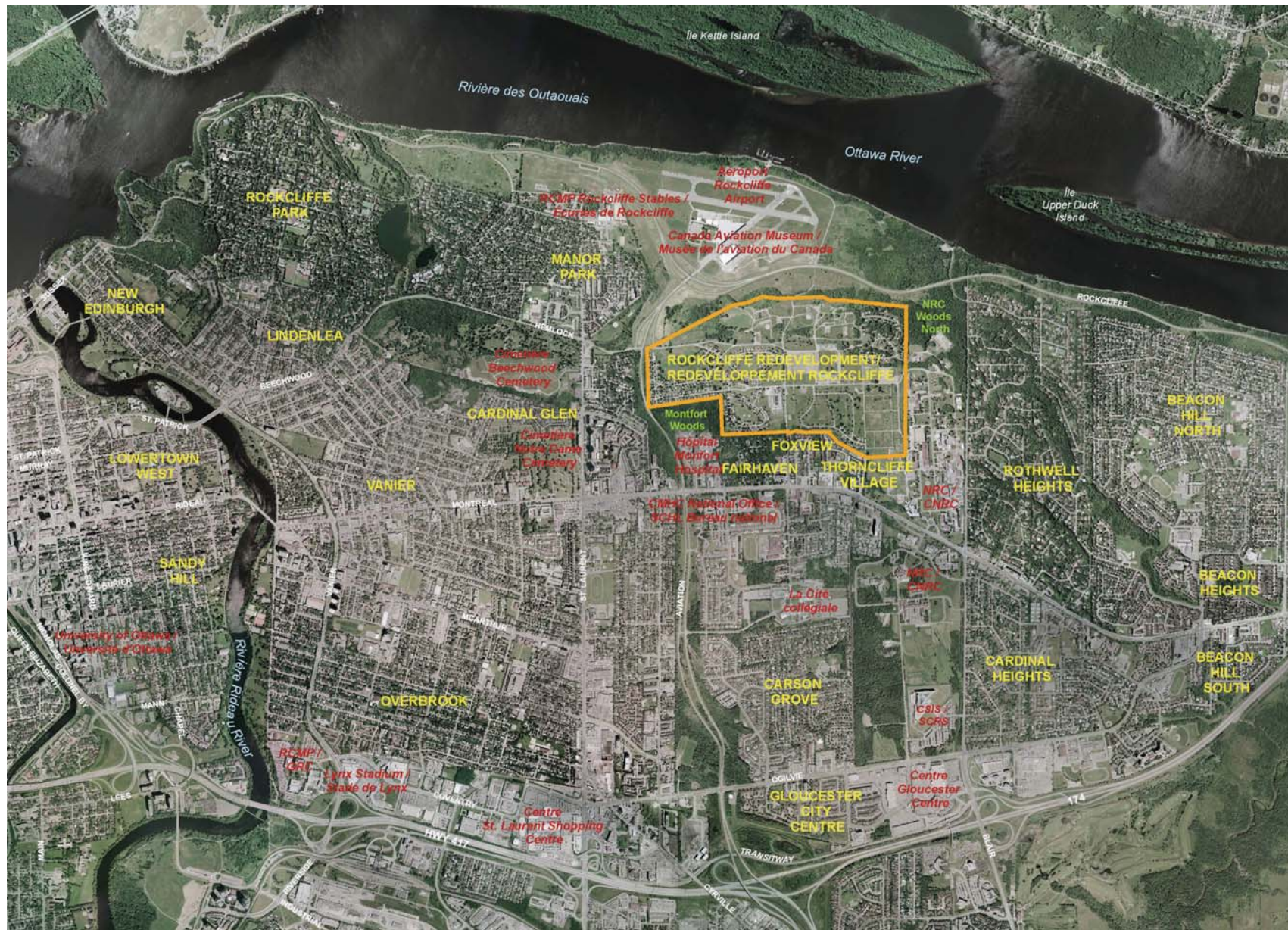
KPMB ARCHITECTS
GREENBERG CONSULTANTS INC.
BPA ARCHITECTS
PFS LANDSCAPE ARCHITECTS

DELCAN CORPORATION
IBI GROUP
HALSALL ENGINEERS
TO BE ANNOUNCED

COMMUNITY DESIGN PLAN
PLAN DE CONCEPTION COMMUNAUTAIRE

27 JUNE 2006/ 27 JUIN 2006

REDEVELOPMENT / REDÉVELOPPEMENT DE
ROCKCLIFFE



Neighbourhood Context Aerial Photograph / Photo aérienne du contexte du quartier

MANOR PARK²



FAIRHAVEN³



ROTHWELL HEIGHTS⁴



ROCKCLIFFE PARK⁵



THORNCLIFFE VILLAGE⁶



MONTREAL ROAD CORRIDOR⁷



BEECHWOOD⁸



FOXVIEW⁹



NATIONAL RESEARCH COUNCIL¹⁰



VANIER¹¹



LINDENLEA¹²



CARDINAL GLEN¹³



CARDINAL HEIGHTS¹⁴



OVERBROOK¹⁵



NEW EDINBURGH¹⁶



CANADA LANDS COMPANY
SOCIÉTÉ IMMOBILIÈRE DU CANADA

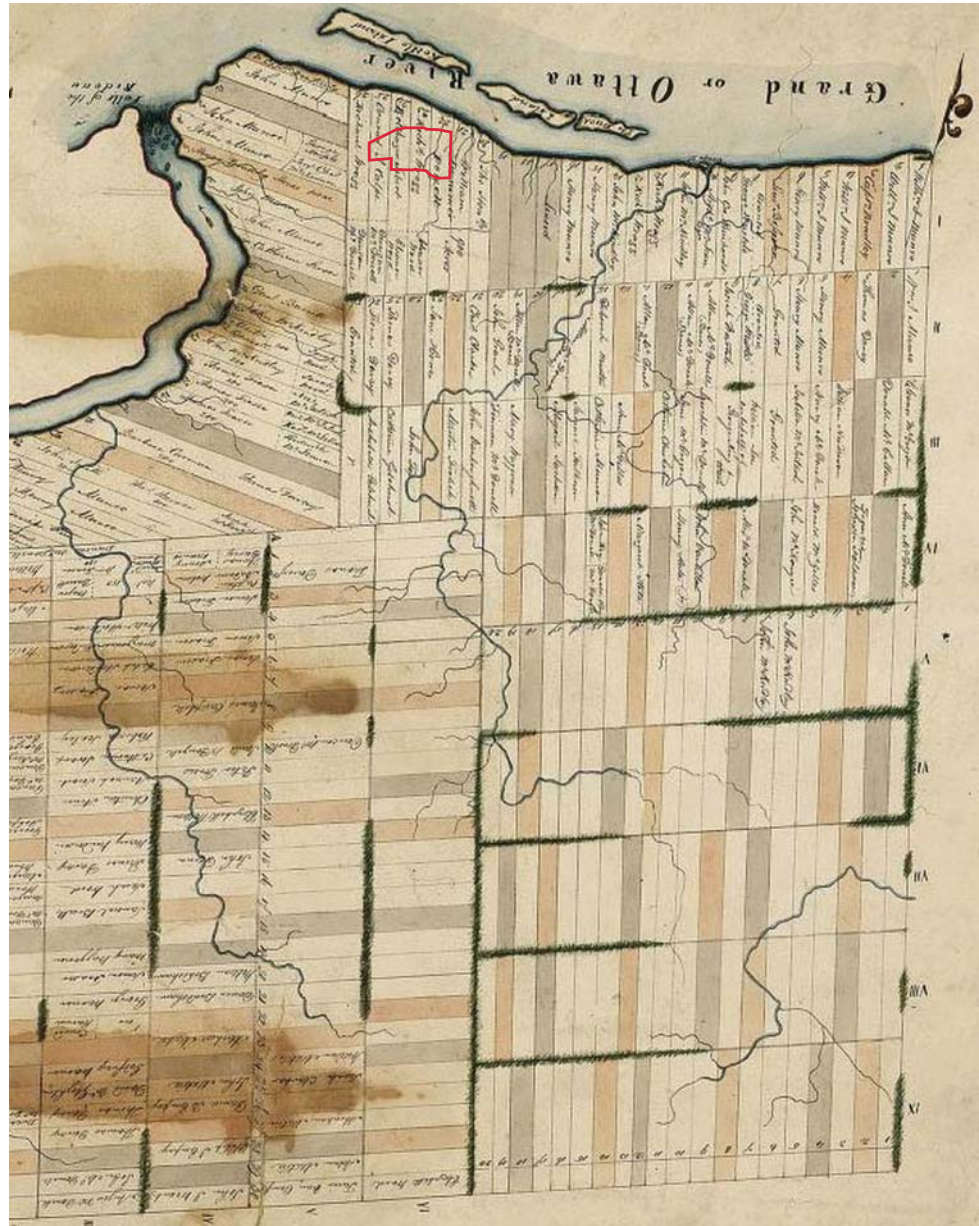
KPMB ARCHITECTS
GREENBERG CONSULTANTS INC.
BPA ARCHITECTS
PFS LANDSCAPE ARCHITECTS

DELCAN CORPORATION
IBI GROUP
HALSALL ENGINEERS
TO BE ANNOUNCED

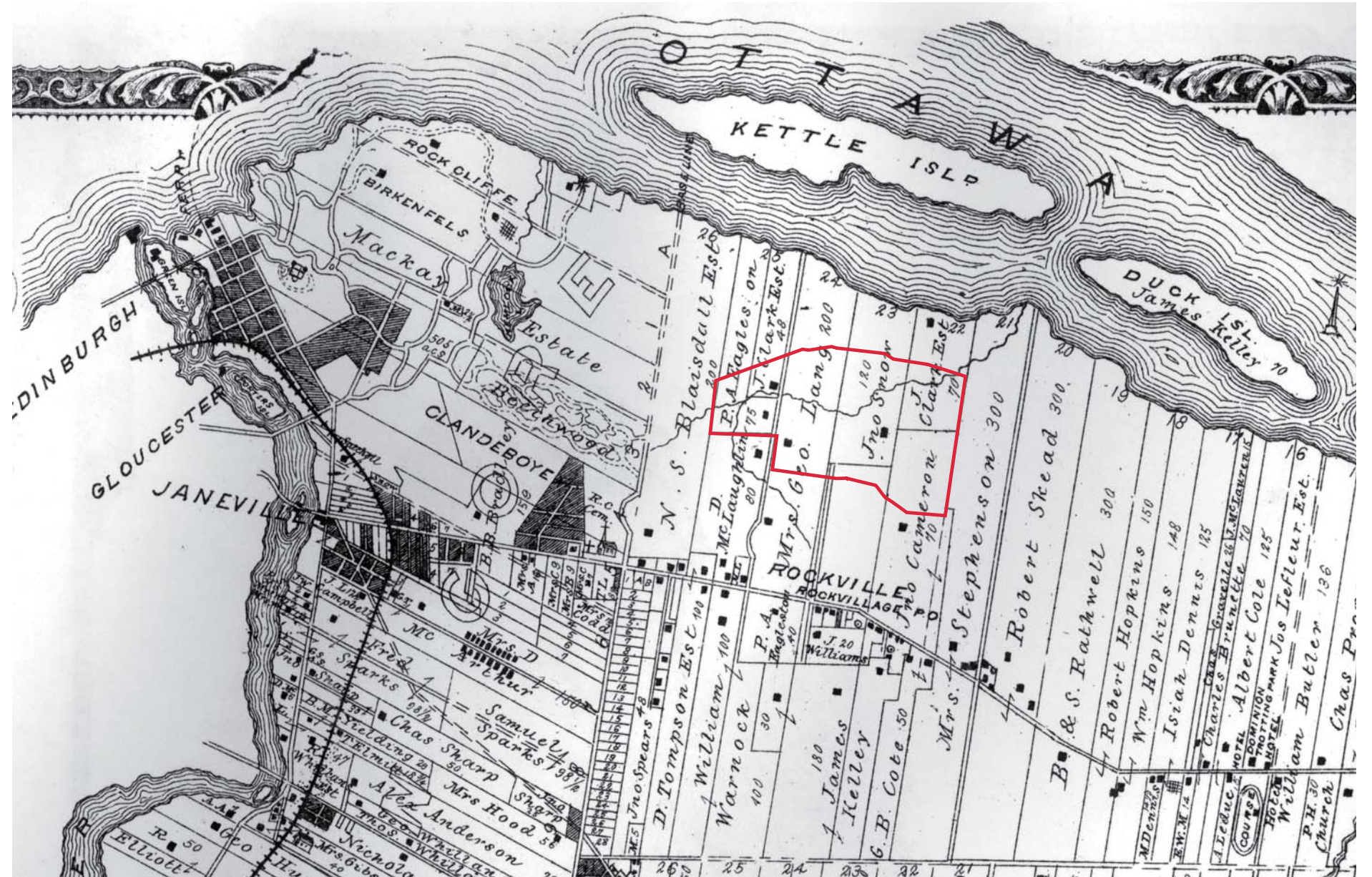
COMMUNITY DESIGN PLAN
PLAN DE CONCEPTION COMMUNAUTAIRE

27 JUNE 2006 / 27 JUIN 2006

REDEVELOPMENT / REDÉVELOPPEMENT DE
ROCKCLIFFE



1825¹



1876²



CANADA LANDS COMPANY
SOCIÉTÉ IMMOBILIÈRE DU CANADA

KPMB ARCHITECTS
 GREENBERG CONSULTANTS INC.
 BPA ARCHITECTS
 PFS LANDSCAPE ARCHITECTS

DELCAN CORPORATION
 IBI GROUP
 HALSALL ENGINEERS
 TO BE ANNOUNCED

COMMUNITY DESIGN PLAN
 PLAN DE CONCEPTION COMMUNAUTAIRE

27 JUNE 2006/ 27 JUIN 2006

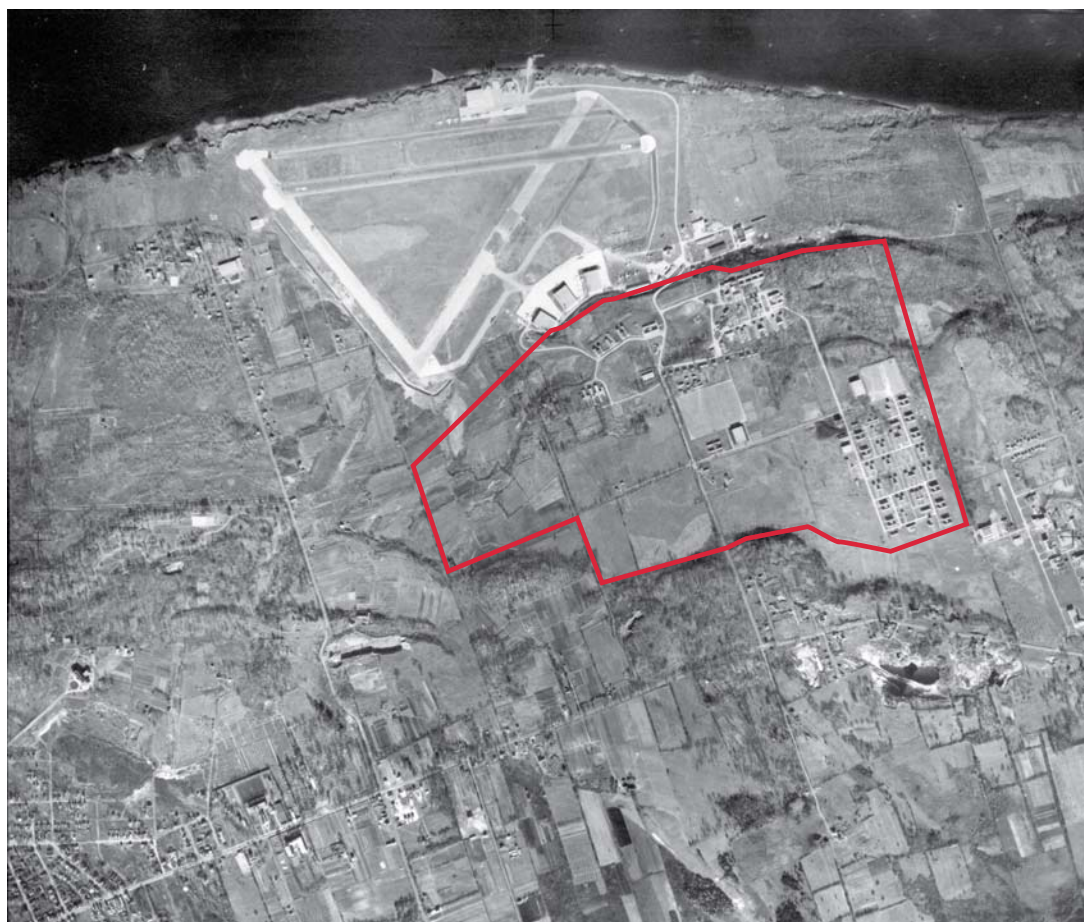
REDEVELOPMENT / REDÉVELOPPEMENT DE
ROCKCLIFFE

1.04

HISTORY AND EVOLUTION / HISTOIRE ET ÉVOLUTION



1932¹



1945²



1968³



1918⁴



1922⁵



1929⁶



1934⁷



1940⁸



1964⁹



CANADA LANDS COMPANY
SOCIÉTÉ IMMOBILIÈRE DU CANADA

KPMB ARCHITECTS
GREENBERG CONSULTANTS INC.
BPA ARCHITECTS
PFS LANDSCAPE ARCHITECTS

DELCAN CORPORATION
IBI GROUP
HALSALL ENGINEERS
TO BE ANNOUNCED

COMMUNITY DESIGN PLAN
PLAN DE CONCEPTION COMMUNAUTAIRE

27 JUNE 2006 / 27 JUIN 2006

REDEVELOPMENT / REDÉVELOPPEMENT DE

ROCKCLIFFE



Benny Farm, Montreal, PQ ³



Garrison Woods, Calgary, AB ²

- INNOVATION / INNOVATION
- VALUE / VALEUR
- LEGACY / HÉRITAGE

Canada Lands Company CLC Limited (CLC) is a commercial federal Crown corporation that optimizes the financial and community value of surplus strategic federal properties.

La Société immobilière du Canada CLC Limitée est une société d'État fédérale commerciale qui optimise la valeur financière et communautaire de propriétés excédentaires et stratégiques fédérales.

For more information visit our website /
Pour plus de renseignements, visitez notre site web, à l'adresse:

www.clc.ca



King James Place, Toronto, ON¹



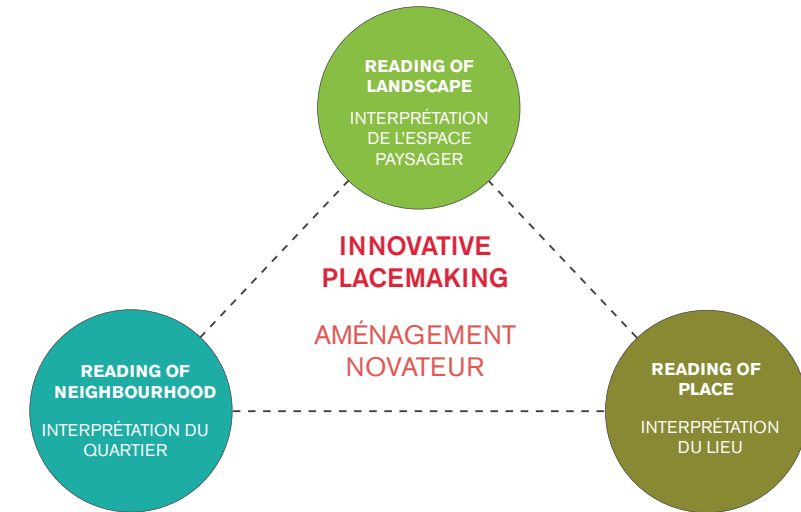
Northpoint, Cambridge, MA²



Vaughan Civic Center, Vaughan, ON³



Strathcona Heights, ON⁴



Bruce Kuwabara
KPMB Architects
ARCHITECTURE/
ARCHITECTURE



Ken Greenberg
Greenberg Consultants Inc.
URBAN DESIGN/
AMÉNAGEMENT URBAIN



Greg Smallenberg
PFS Landscape Architects
LANDSCAPE/
AMÉNAGEMENT PAYSAGER



Barry Padolsky
BPA Architects
URBAN DESIGN AND HERITAGE/
AMÉNAGEMENT URBAIN ET PATRIMOINE



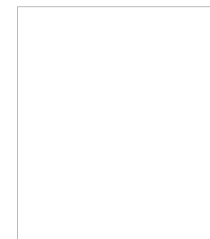
Ron Jack
DELSCAN Corporation
TRANSPORTATION/
TRANSPORTS



Bob Wingate
IBI Group
MUNICIPAL/
SERVICES MUNICIPAUX



Peter Halsall
Halsall Engineers
SUSTAINABILITY/
DURABILITÉ



To Be Announced
Être Annoncé
ECOLOGY/
ÉCOLOGIE



CANADA LANDS COMPANY
SOCIÉTÉ IMMOBILIÈRE DU CANADA

KPMB ARCHITECTS
GREENBERG CONSULTANTS INC.
BPA ARCHITECTS
PFS LANDSCAPE ARCHITECTS

DELCAN CORPORATION
IBI GROUP
HALSALL ENGINEERS
TO BE ANNOUNCED

COMMUNITY DESIGN PLAN
PLAN DE CONCEPTION COMMUNAUTAIRE

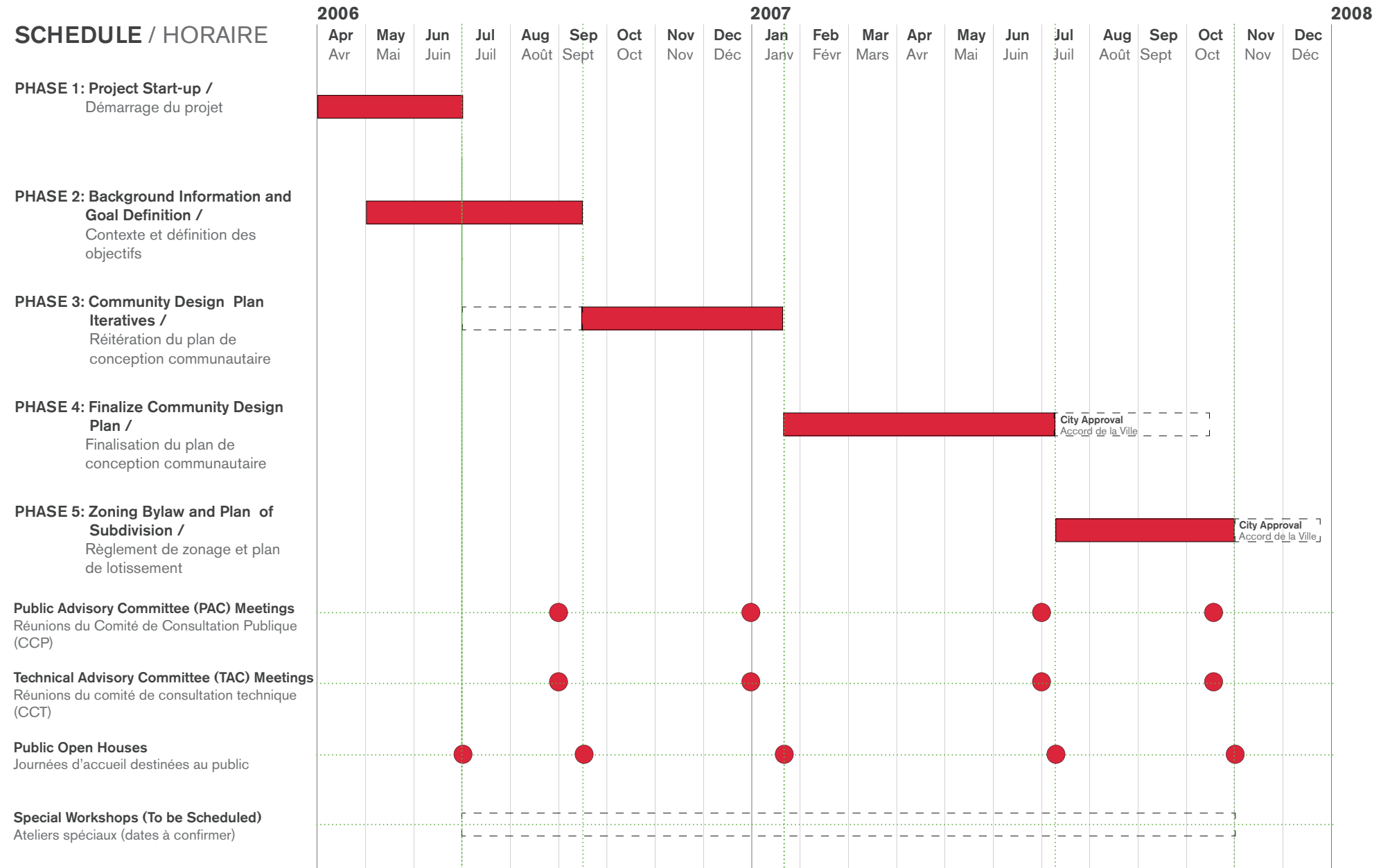
27 JUNE 2006/ 27 JUIN 2006

REDEVELOPMENT / REDÉVELOPPEMENT DE
ROCKCLIFFE

CONSULTATION NETWORK / RÉSEAU DE CONSULTATION



SCHEDULE / HORAIRE



CANADA LANDS COMPANY
SOCIÉTÉ IMMOBILIÈRE DU CANADA

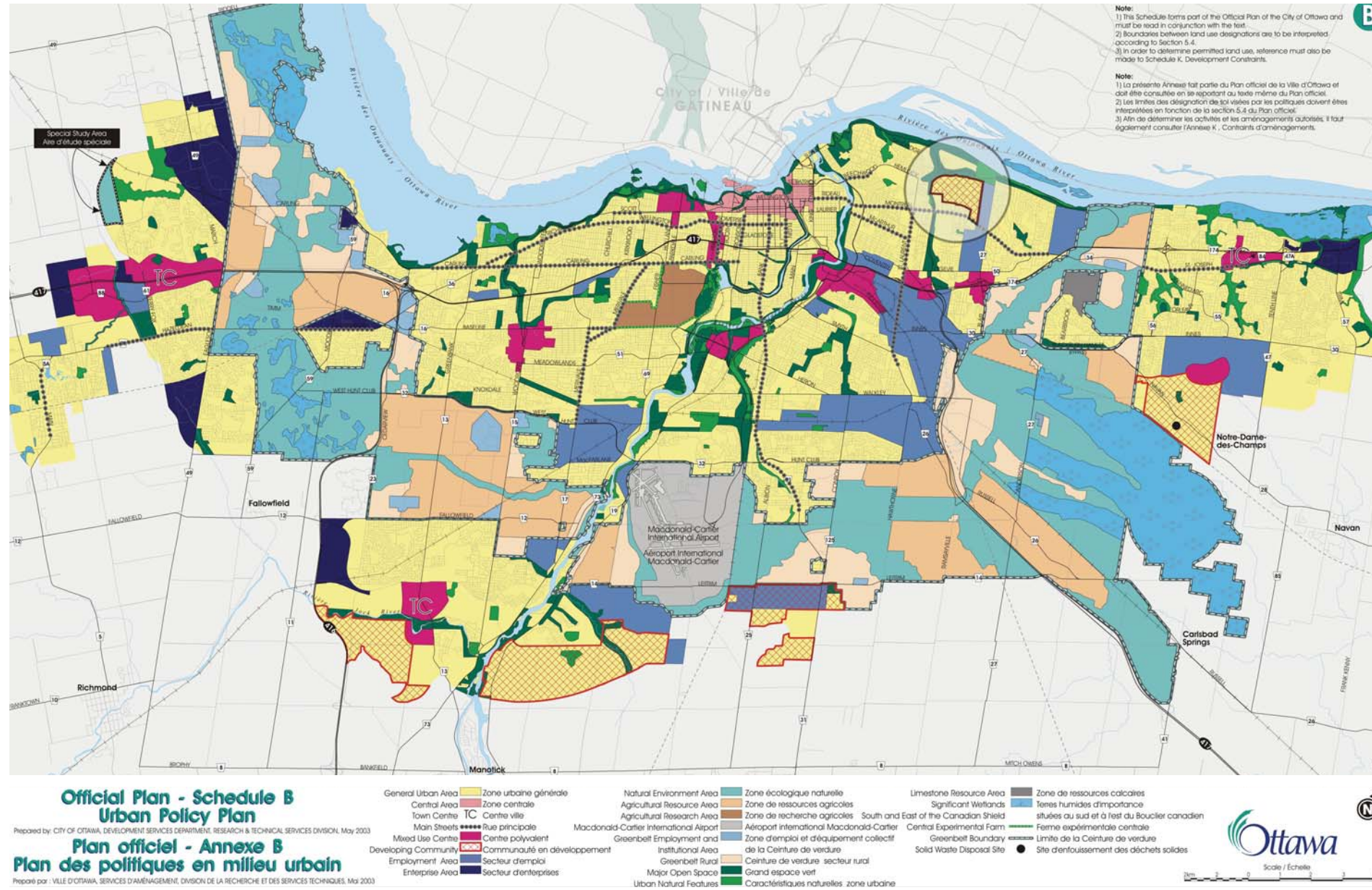
KPMB ARCHITECTS
GREENBERG CONSULTANTS INC.
BPA ARCHITECTS
PFS LANDSCAPE ARCHITECTS

DELSCAN CORPORATION
IBI GROUP
HALSALL ENGINEERS
TO BE ANNOUNCED

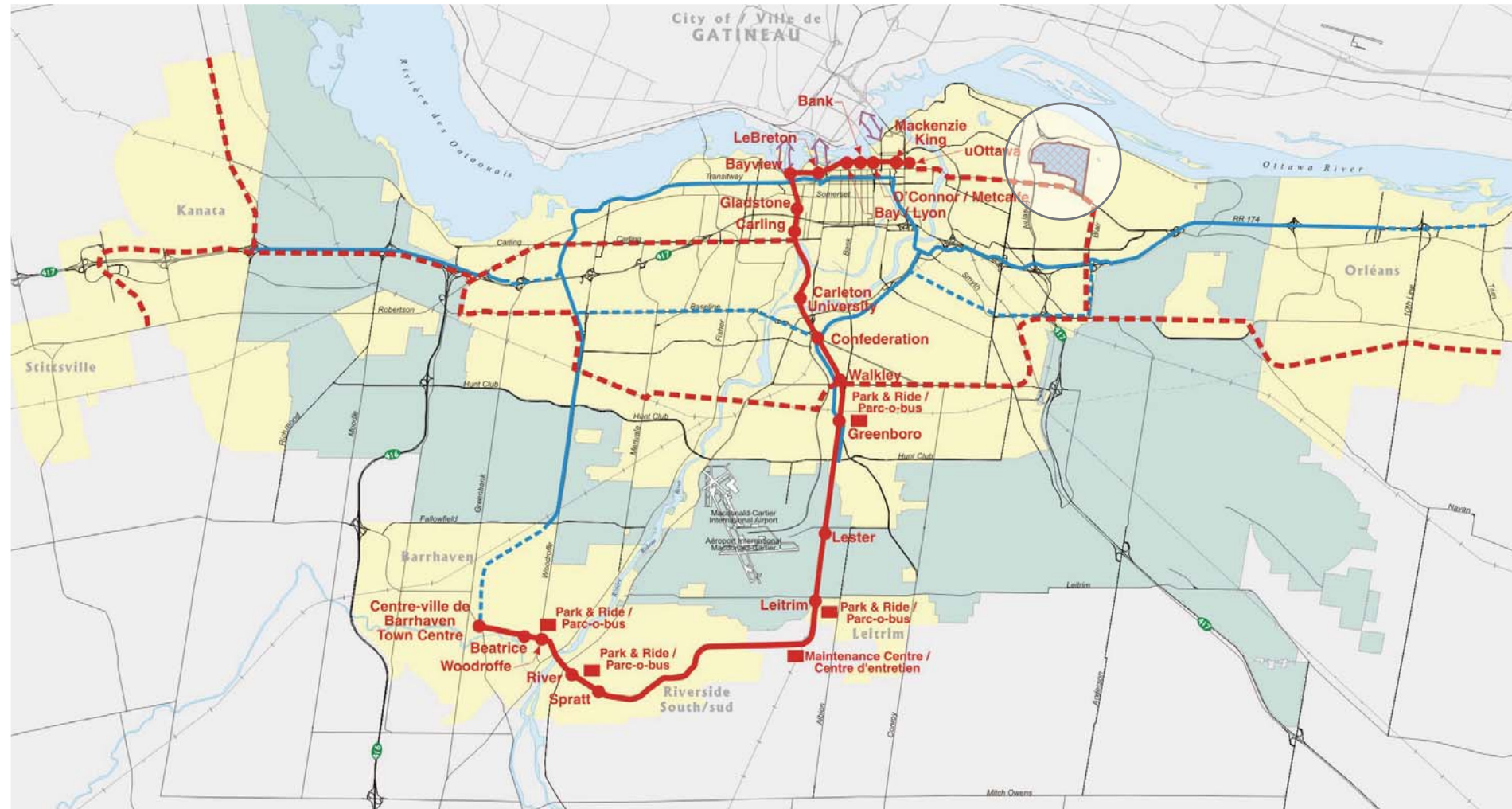
COMMUNITY DESIGN PLAN
PLAN DE CONCEPTION COMMUNAUTAIRE

27 JUNE 2006 / 27 JUIN 2006

REDEVELOPMENT / REDÉVELOPPEMENT DE
ROCKCLIFFE



View of the City of Ottawa / Vue de la Ville d'Ottawa



Rapid Transit Network

Prepared by: City of Ottawa, Planning and Growth Management Department

Réseau de transport rapide

Préparé par : Ville d'Ottawa, Service de l'urbanisme et de la gestion de la croissance

Urban Area		Zone urbain
Greenbelt		Ceinture de verdure
2009 North-South LRT		TLR nord-sud 2009
Future LRT		TLR futur
Existing Transitway		Transitway actuel
Future Transitway		Transitway futur

Canada Ottawa Ontario

Scale / Échelle
Rapid Transit Network / Réseau de transport rapide¹



Light Rapid Transit, OC Transpo / Transport rapide et léger, OC Transpo²



Imagining The Future: Grades 4 And 5 Students, Manor Park Elementary School /
Imaginer le futur : des écoliers en niveau 4 et 5 , Ecole élémentaire de manor park.1



CANADA LANDS COMPANY
SOCIÉTÉ IMMOBILIÈRE DU CANADA

KPMB ARCHITECTS
GREENBERG CONSULTANTS INC.
BPA ARCHITECTS
PFS LANDSCAPE ARCHITECTS

DELCAN CORPORATION
IBI GROUP
HALSALL ENGINEERS
TO BE ANNOUNCED

COMMUNITY DESIGN PLAN
PLAN DE CONCEPTION COMMUNAUTAIRE

27 JUNE 2006/ 27 JUIN 2006

REDEVELOPMENT / REDÉVELOPPEMENT DE
ROCKCLIFFE

Go Green:

- work with existing 'green zones' and develop on-site ecology
- ensure strong connections between neighbouring tracts and the new green areas

Opter Pour le Virage Écologique :

- travailler avec des «zones vertes» existantes et développer un système écologique sur place
- assurer des liens solides entre les terrains avoisinants et les nouvelles zones vertes



CANADA LANDS COMPANY
SOCIÉTÉ IMMOBILIÈRE DU CANADA

KPMB ARCHITECTS
GREENBERG CONSULTANTS INC.
BPA ARCHITECTS
PFS LANDSCAPE ARCHITECTS

DELCAN CORPORATION
IBI GROUP
HALSALL ENGINEERS
TO BE ANNOUNCED

COMMUNITY DESIGN PLAN
PLAN DE CONCEPTION COMMUNAUTAIRE

27 JUNE 2006 / 27 JUIN 2006

REDEVELOPMENT / REDÉVELOPPEMENT DE
ROCKCLIFFE

1.12

LANDSCAPE CHARACTER / CARACTÈRE PAYSAGER

Nature the exceptional character of the landscape: the varied vegetation, interesting topography and landforms, dramatic views, and the panoramic horizon open to wonderful qualities of light.

Entretenir le caractère exceptionnel du paysage : la végétation variée, la topographie et les formes du terrain intéressantes, les points de vue spectaculaires et le panorama permettent d'accéder à une merveilleuse qualité de la lumière.



Location Of Landscape Character Photos / Photos sur l'emplacement du caractère paysager



CANADA LANDS COMPANY
SOCIÉTÉ IMMOBILIÈRE DU CANADA

KPMB ARCHITECTS
GREENBERG CONSULTANTS INC.
BPA ARCHITECTS
PFS LANDSCAPE ARCHITECTS

DELCAN CORPORATION
IBI GROUP
HALSALL ENGINEERS
TO BE ANNOUNCED

COMMUNITY DESIGN PLAN
PLAN DE CONCEPTION COMMUNAUTAIRE

27 JUNE 2006 / 27 JUIN 2006

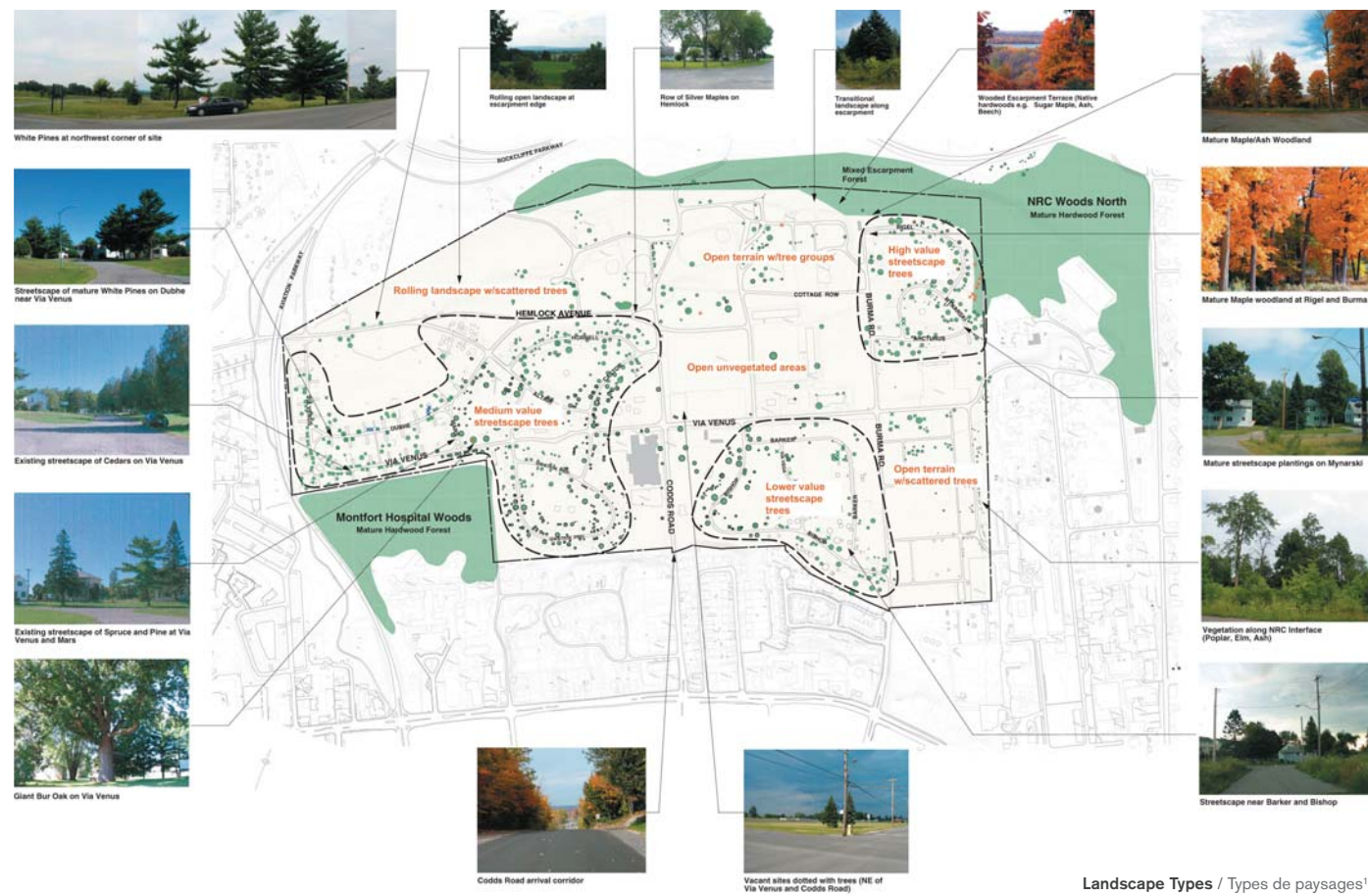
REDEVELOPMENT / REDÉVELOPPEMENT DE
ROCKCLIFFE

1.13

EXISTING TREES / ARBRES EXISTANTS

The site has an impressive inventory of existing trees. Some are legacies from the initial planning for the base, some have seeded themselves. Take full advantage of and augment the existing tree canopy.

Le site est doté d'un nombre d'arbres impressionnant. Certains arbres sont l'héritage de la planification initiale de la base et certains se sont ensemencés eux-mêmes. Tirer pleinement avantage du couvert d'arbres existant et l'augmenter.



1.14

LANDSCAPE PLACEMAKING / AMÉNAGEMENT PAYSAGER

Landscape is fundamental to placemaking and generates: great community space, emotive responses to neighbourhood, new, meaningful, useful and memorable green places.

Le paysage est un élément fondamental de l'aménagement et il génère : un excellent espace communautaire, des réactions émotionnelles envers le quartier, de nouveaux endroits verts significatifs, utiles et inoubliables.



CANADA LANDS COMPANY
SOCIÉTÉ IMMOBILIÈRE DU CANADA

KPMB ARCHITECTS
GREENBERG CONSULTANTS INC.
BPA ARCHITECTS
PFS LANDSCAPE ARCHITECTS

DELCAN CORPORATION
IBI GROUP
HALSALL ENGINEERS
TO BE ANNOUNCED

COMMUNITY DESIGN PLAN
PLAN DE CONCEPTION COMMUNAUTAIRE

27 JUNE 2006 / 27 JUIN 2006

REDEVELOPMENT / REDÉVELOPPEMENT DE
ROCKCLIFFE

Take full advantage of trail networks by incorporating existing routes into the community to create viable options for recreation and commuting.

Tirer pleinement parti des réseaux de sentiers en incorporant des itinéraires existants à la communauté pour créer des options viables en matière de loisirs et de transport.





“...Motor vehicles are causing the most damage to the environment. Yet with better urban planning, cities could easily be more pedestrian - and transit -friendly, and we could reduce the heavy toll we impose on nature and our health.”

« (...) Ce sont les véhicules à moteur qui endommagent le plus l'environnement. Pourtant, avec un meilleur urbanisme, les villes pourraient facilement être plus adaptées aux piétons et au transport en commun, et nous pourrions réduire le lourd fardeau que nous faisons peser sur la nature et sur notre santé. »

Fondation David Suzuki



CANADA LANDS COMPANY
SOCIÉTÉ IMMOBILIÈRE DU CANADA

KPMB ARCHITECTS
 GREENBERG CONSULTANTS INC.
 BPA ARCHITECTS
 PFS LANDSCAPE ARCHITECTS

DELCAN CORPORATION
 IBI GROUP
 HALSALL ENGINEERS
 TO BE ANNOUNCED

COMMUNITY DESIGN PLAN
 PLAN DE CONCEPTION COMMUNAUTAIRE

27 JUNE 2006/ 27 JUIN 2006

REDEVELOPMENT / REDÉVELOPPEMENT DE
ROCKCLIFFE

Integrate existing and new buildings and landscapes. Provide a diversity of architectural expression and a range of living options in a high quality contemporary design.

Intégrer les immeubles, tant nouveaux qu'existants, aux paysages. Fournir une expression architecturale diversifiée et une variété d'options de résidence dans le cadre d'un aménagement contemporain de haute qualité.

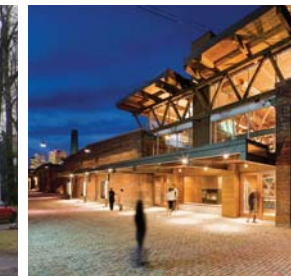
ADAPTIVE RE-USE / RÉUTILISATION ADAPTATIVE



Existing PMQ Single-Family Housing
Maisons militaires unifamiliales existantes⁷



Existing Multiple-Unit PMQ Housing, Rockcliffe Site
Maisons militaires à plusieurs logements existantes⁸



Theatre Transformation of Industrial Building
Transformation d'un immeuble industriel en cinéma⁴



Museum Transformation of 18th C. Barn
Transformation d'une grange du 19e siècle en musée⁵



New Courtyard Connecting Existing Buildings
Nouvelle cour reliant les immeubles existants⁶



House Addition
Rajout aux maisons⁷

HOUSE TYPES / TYPES DE MAISONS



Town House
Maison de ville⁸



Forest House
Maison en forêt⁹



Lane House
Maison sur allée¹⁰



Row House
Maison en rangée¹¹



Sky House
Maison avec vue sur le panorama¹²



Hill House
Maison sur colline¹³



Green House
Maison écologique¹⁴



Solar House
Maison solaire¹⁵



Detached House
Maison uni-familiale¹⁶



Multi House
Maison à plusieurs logements¹⁷



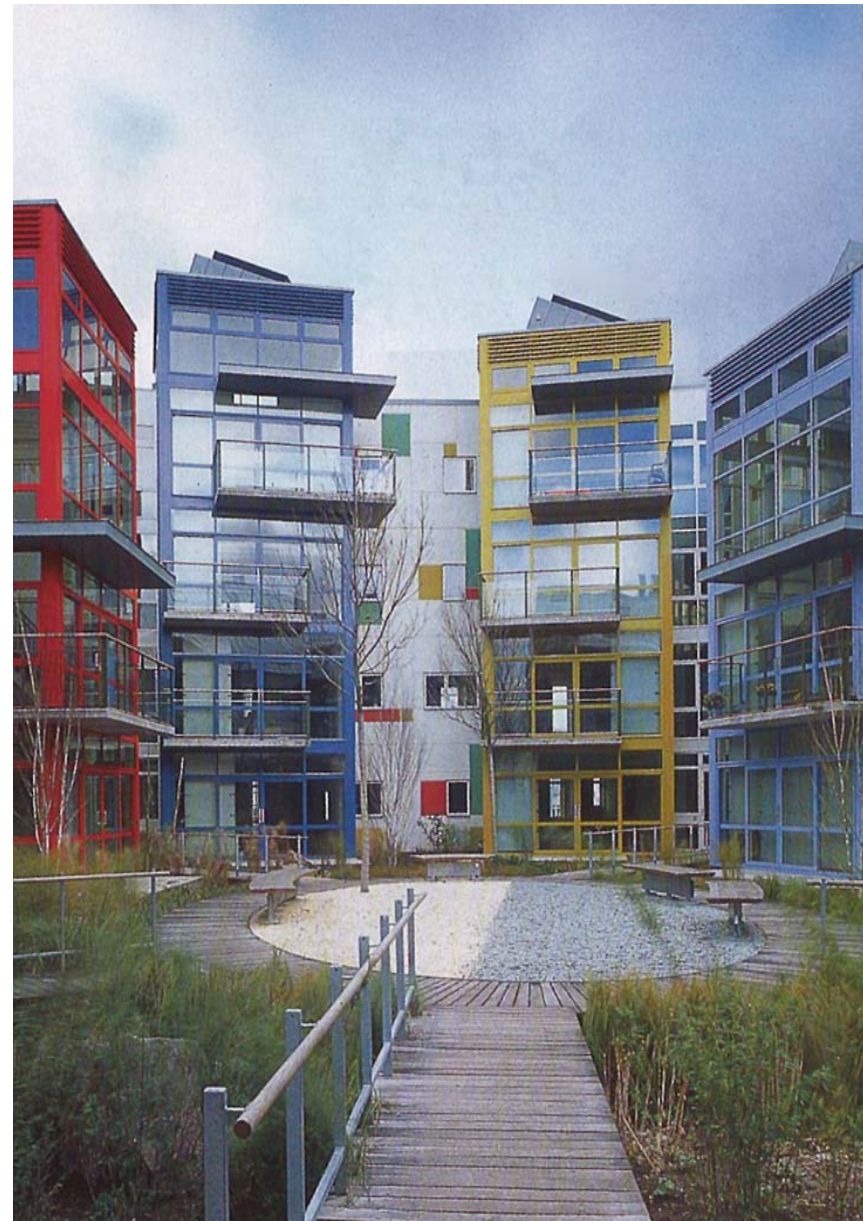
Garden House
Maison avec jardin¹⁸



Courtyard House
Maison avec cour¹⁹



Terrace House
Maison avec terrasse²⁰



Sustainable Development, Malmö, Sweden / Développement durable, Malmö, Suède¹



CANADA LANDS COMPANY
SOCIÉTÉ IMMOBILIÈRE DU CANADA

KPMB ARCHITECTS
GREENBERG CONSULTANTS INC.
BPA ARCHITECTS
PFS LANDSCAPE ARCHITECTS

DELCAN CORPORATION
IBI GROUP
HALSALL ENGINEERS
TO BE ANNOUNCED

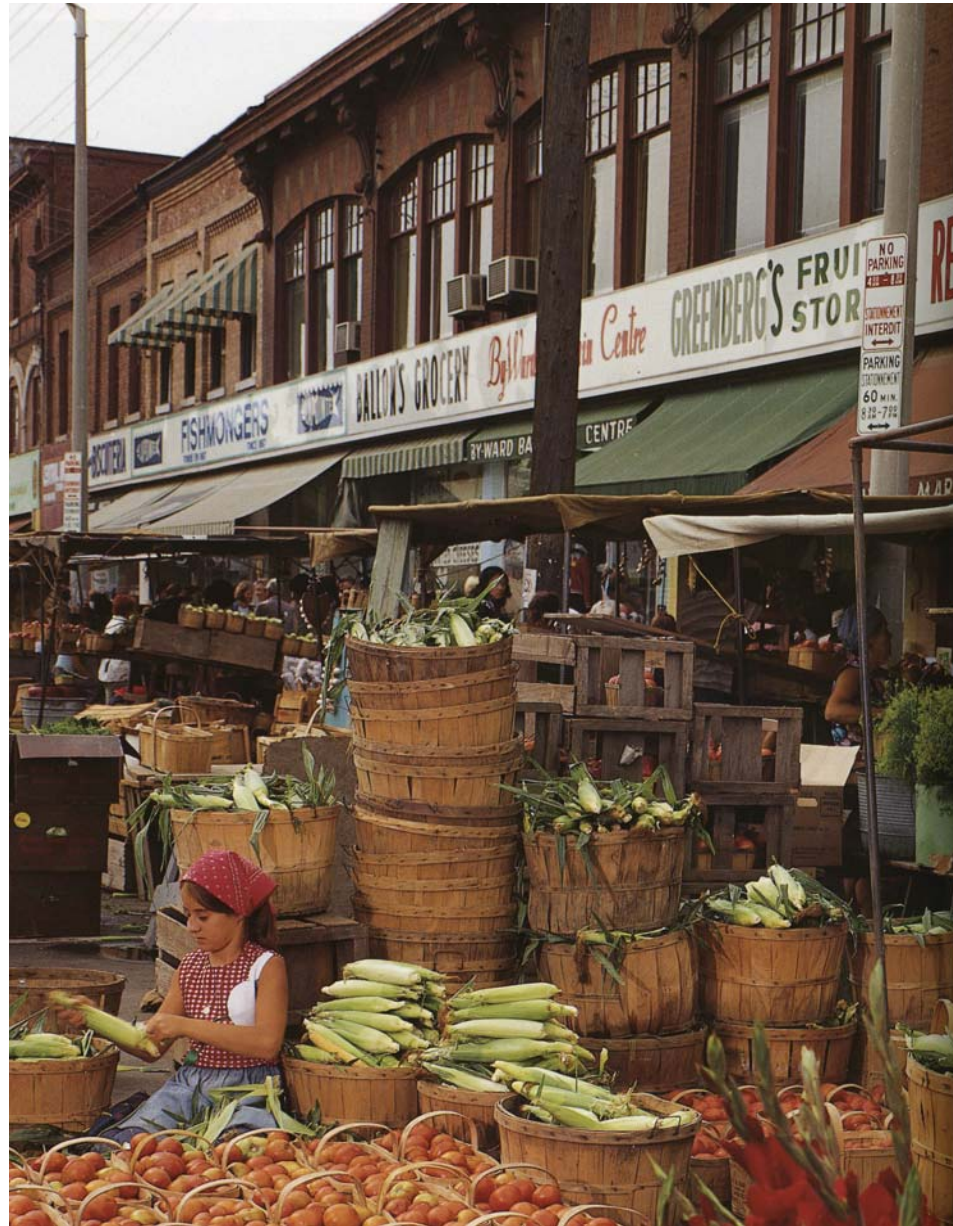
COMMUNITY DESIGN PLAN
PLAN DE CONCEPTION COMMUNAUTAIRE

27 JUNE 2006 / 27 JUIN 2006

REDEVELOPMENT / REDÉVELOPPEMENT DE
ROCKCLIFFE

The single most important sustainable measure is mixed use. Create a compact, walkable, transit-oriented neighbourhood. Provide a sense of place for residents and workers.

La mesure de développement durable la plus importante est l'usage mixte. Créer un quartier compact, propice à la marche et orienté sur le transport en commun. Créer un sentiment d'appartenance chez les résidents et les travailleurs.



Byward Market, Ottawa / Marché Byward, Ottawa¹



Cafe
Café²



Studio
Studio³



Garage Sale
Vente-débaras⁴



Community Pond
Bassin communautaire⁵



Grocer
Épicerie⁶



Boutique
Boutique⁷



Streetscape
Paysage urbain⁸



Office/ Residential
Bureaux / résidences⁹



Air Field
Terrain d'aviation¹⁰



Water Treatment Plant
Usine de traitement de l'eau¹¹



Curb Appeal
Apparence attrayante¹²



Canteen
Casse-croûte¹³



Corner Store
Dépanneur¹⁴



Bike Shop
Magasin de bicyclettes¹⁵



Bike Storage
Entreposage de bicyclettes¹⁶



Factory
Usine¹⁷





Roof Garden, Canadian Embassy, Berlin, Germany / Jardin-toiture, ambassade canadienne, Berlin, Allemagne¹

Maximize the potential to showcase a variety of sustainable practices in an exemplary urban development.

Optimiser le potentiel afin de démontrer diverses pratiques durables dans un développement urbain exemplaire.



Natural Ventilation
Aération naturelle²



Daylighting
Éclairage du jour³



Stormwater Management
Gestion des eaux pluviales⁴



Living Walls
Murs vivants⁵



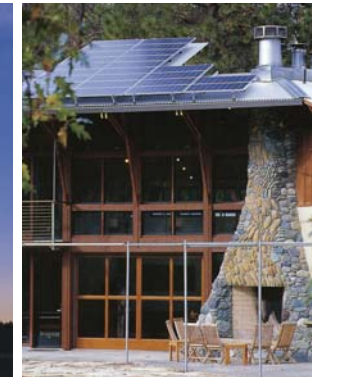
Green Roof
Toit vert⁶



Innovative Water Retention
Retention de l'eau novatrice⁷



Recycled/ Regional Materials
Matières recyclées / régionales⁸



Solar Energy
Énergie solaire⁹



CANADA LANDS COMPANY
SOCIÉTÉ IMMOBILIÈRE DU CANADA

KPMB ARCHITECTS
GREENBERG CONSULTANTS INC.
BPA ARCHITECTS
PFS LANDSCAPE ARCHITECTS

DELCAN CORPORATION
IBI GROUP
HALSALL ENGINEERS
TO BE ANNOUNCED

COMMUNITY DESIGN PLAN
PLAN DE CONCEPTION COMMUNAUTAIRE

27 JUNE 2006/ 27 JUIN 2006

REDEVELOPMENT / REDÉVELOPPEMENT DE
ROCKCLIFFE

Invest in the quality of the public realm as the basis for placemaking.
Investir dans la qualité du domaine public comme base d'aménagement.



CANADA LANDS COMPANY
SOCIÉTÉ IMMOBILIÈRE DU CANADA

KPMB ARCHITECTS
GREENBERG CONSULTANTS INC.
BPA ARCHITECTS
PFS LANDSCAPE ARCHITECTS

DELCAN CORPORATION
IBI GROUP
HALSALL ENGINEERS
TO BE ANNOUNCED

COMMUNITY DESIGN PLAN
PLAN DE CONCEPTION COMMUNAUTAIRE

27 JUNE 2006 / 27 JUIN 2006

REDEVELOPMENT / REDÉVELOPPEMENT DE
ROCKCLIFFE

1.21

SITE TOPOGRAPHY / TOPOGRAPHIE DU SITE

The Rockcliffe redevelopment site, at first glance, seems flat in the middle and steep at the edges. This is only partially true. In fact, there are a number of topographic subtleties that lend a great deal of interest to the landscape character of the place. There are folds and gullies, plateaus, small hills, ridges, cliffs, bowls and fields. Map these subtleties in order to read the patterns on the land.

À première vue, le site de redéveloppement de Rockcliffe semble plat au milieu et escarpé aux bords. Ce n'est que partiellement vrai. En fait, plusieurs subtilités topographiques confèrent beaucoup d'intérêt au caractère paysager du lieu. On y retrouve des plis et des ravines, des plateaux, de petites collines, des contre-pentes, des falaises, des bassins et des champs. Dresser le plan de ces subtilités afin d'interpréter les tendances du terrain.



CANADA LANDS COMPANY
SOCIÉTÉ IMMOBILIÈRE DU CANADA

KPMB ARCHITECTS
GREENBERG CONSULTANTS INC.
BPA ARCHITECTS
PFS LANDSCAPE ARCHITECTS

DELCAN CORPORATION
IBI GROUP
HALSALL ENGINEERS
TO BE ANNOUNCED

COMMUNITY DESIGN PLAN
PLAN DE CONCEPTION COMMUNAUTAIRE

27 JUNE 2006 / 27 JUIN 2006

REDEVELOPMENT / REDÉVELOPPEMENT DE
ROCKCLIFFE



LEGEND /

- | | | | |
|--|--|--|---|
| | DIRECTION OF FLOW IN STREET SWALE
DIRECTION DU DÉBIT DE LA RIGOLE DE DRAINAGE DES RUES | | HISTORIC WATERCOURSE
COURS D'EAU HISTORIQUE |
| | GENERAL DIRECTION OF OVERLAND FLOW
DIRECTION GÉNÉRALE DU RUISSELLEMENT DE SURFACE | | CURRENT WATERCOURSE
COURS D'EAU ACTUEL |
| | WATERSHED
LIGNE DE PARTAGE DES EAUX | | POTENTIAL DETENTION POND
RÉTENTION POSSIBLE |
| | | | SITE BOUNDARY
LIMITES DU SITE |

0m 100m 500m



Conceptual Watercourse Diagram / Diagramme conceptuel du cours d'eau

Stormwater management is one of the pillars of sustainable approaches to site design. Focus on surface drainage systems that minimize below-grade infrastructure, contribute to natural habitats and become a part of the community.

La gestion des eaux pluviales est l'un des piliers de l'approche en matière d'aménagement durable du site. Se concentrer sur des systèmes de drainage superficiel qui réduisent l'infrastructure souterraine, contribuent aux habitats naturels et deviennent partie intégrante de l'esthétique de la communauté.



CANADA LANDS COMPANY
SOCIÉTÉ IMMOBILIÈRE DU CANADA

KPMB ARCHITECTS
GREENBERG CONSULTANTS INC.
BPA ARCHITECTS
PFS LANDSCAPE ARCHITECTS

DELCAN CORPORATION
IBI GROUP
HALSALL ENGINEERS
TO BE ANNOUNCED

COMMUNITY DESIGN PLAN
PLAN DE CONCEPTION COMMUNAUTAIRE

27 JUNE 2006 / 27 JUIN 2006

REDEVELOPMENT / REDÉVELOPPEMENT DE

ROCKCLIFFE



Solar Power Plant, Germany / Champ d'énergie solaire, Allemagne¹

Enable the landscape in ways that give back to the community.
Develop ecosystems that enhance and sustain a high quality of life.

Habiliter le paysage de sorte à ce qu'il soit bénéfique pour la communauté.
Développer des écosystèmes qui améliorent et maintiennent une qualité de vie élevée.



Living Machine
Machine vivante²



Hybrid Solar/ Wind Energy
Energie solaire/ vent³



Arboretum
Arboretum⁴



Experimental Farm
Ferme expérimentale⁵



Storm Water Ponds
Bassins d'eaux pluviales⁶



Edible Agriculture
Agriculture comestible⁷



Community Gardens
Jardins communautaires⁸



Commemorative Orchards
Vergers commémoratifs⁹



CANADA LANDS COMPANY
SOCIÉTÉ IMMOBILIÈRE DU CANADA

KPMB ARCHITECTS
GREENBERG CONSULTANTS INC.
BPA ARCHITECTS
PFS LANDSCAPE ARCHITECTS

DELCAN CORPORATION
IBI GROUP
HALSALL ENGINEERS
TO BE ANNOUNCED

COMMUNITY DESIGN PLAN
PLAN DE CONCEPTION COMMUNAUTAIRE

27 JUNE 2006/ 27 JUIN 2006

REDEVELOPMENT / REDÉVELOPPEMENT DE
ROCKCLIFFE



National Botanical Garden of Wales Greenhouse, Wales, UK / Serre du National Botanical Garden of Wales, Pays de Galles, Grande-Bretagne¹

Integrate and accommodate a major institution that will draw value and visitors to the community.

Intégrer et héberger une institution importante qui ajoutera de la valeur à la communauté et attirera les visiteurs.



Richmond City Hall, Richmond, BC
Hôtel de ville de Richmond,
Richmond (Colombie-Britannique) ²



Reichstag, Berlin, Germany
Reichstag, Berlin, Allemagne ³



Eden House Project Greenhouse, Cornwall, UK
Serre du projet Eden House, Cornwall, Grande-Bretagne ⁴



Canadian Embassy, Berlin, Germany
Ambassade canadienne, Berlin, Allemagne ⁵



Biosphère, Montreal, PQ
Biosphère, Montréal (Québec) ⁶



Children Museum, Pittsburg, PA
Children's Museum, Pittsburgh (Pennsylvanie) ⁷



CANADA LANDS COMPANY
SOCIÉTÉ IMMOBILIÈRE DU CANADA

KPMB ARCHITECTS
GREENBERG CONSULTANTS INC.
BPA ARCHITECTS
PFS LANDSCAPE ARCHITECTS

DELCAN CORPORATION
IBI GROUP
HALSALL ENGINEERS
TO BE ANNOUNCED

COMMUNITY DESIGN PLAN
PLAN DE CONCEPTION COMMUNAUTAIRE

27 JUNE 2006 / 27 JUIN 2006



REDEVELOPMENT / REDÉVELOPPEMENT DE
ROCKCLIFFE

1.25

A WALKABLE COMMUNITY / UNE COMMUNAUTÉ PROPICE À LA MARCHE



LEGEND / LÉGENDE

-  10 MINUTE WALKING DISTANCE
DISTANCE DE MARCHÉ DE 10 MINUTES
-  5 MINUTE WALKING DISTANCE
DISTANCE DE MARCHÉ DE 5
-  SITE BOUNDARY
LIMITES DU SITE

0m 100m 500m



Walking Distances Diagram / Diagramme Sur Les Distances de Marche

Assess how people move on foot, where they will go and how long it will take. Seek a better balance between cars and people, incorporate greenways, trails, sidewalks and shortcuts that together facilitate enjoyable walking and recreation.

Évaluer comment les gens se déplacent à pied, où ils iront et combien de temps sera requis pour s'y rendre. Rechercher un meilleur équilibre entre les voitures et les piétons, incorporer des voies vertes, des sentiers, des trottoirs et des raccourcis qui, tous ensemble, favorisent une marche agréable et le cyclisme récréatif.



CANADA LANDS COMPANY
SOCIÉTÉ IMMOBILIÈRE DU CANADA

KPMB ARCHITECTS
GREENBERG CONSULTANTS INC.
BPA ARCHITECTS
PFS LANDSCAPE ARCHITECTS

DELCAN CORPORATION
IBI GROUP
HALSALL ENGINEERS
TO BE ANNOUNCED

COMMUNITY DESIGN PLAN
PLAN DE CONCEPTION COMMUNAUTAIRE

27 JUNE 2006 / 27 JUIN 2006

REDEVELOPMENT / REDÉVELOPPEMENT DE

ROCKCLIFFE

“As the city becomes more park-like, the park becomes more city-like.”

«Alors que les villes ressemblent de plus en plus à des parcs, les parcs deviennent de plus en plus comme des villes.»
-Betsy Barlow Rogers



Parc Andre Citroen, Paris, France



CANADA LANDS COMPANY
SOCIÉTÉ IMMOBILIÈRE DU CANADA

KPMB ARCHITECTS
GREENBERG CONSULTANTS INC.
BPA ARCHITECTS
PFS LANDSCAPE ARCHITECTS

DELCAN CORPORATION
IBI GROUP
HALSALL ENGINEERS
TO BE ANNOUNCED

COMMUNITY DESIGN PLAN
PLAN DE CONCEPTION COMMUNAUTAIRE

27 JUNE 2006 / 27 JUIN 2006

REDEVELOPMENT / REDÉVELOPPEMENT DE
ROCKCLIFFE

1.01 URBAN CONTEXT

1. Aerial Photograph
Location: Ottawa, 2005 Orthophotography.
Source: City of Ottawa, 2005 Orthophotography.

1.02 NEIGHBOURHOOD CONTEXT

1. Aerial Photograph
Source: City of Ottawa, 2005 Orthophotography.
2. Manor Park
Location: Ottawa, ON
Source: BPA Architects
3. Fairhaven
Location: Ottawa, ON
Source: KPMB Architects
4. Thorncliffe Village
Location: Ottawa, ON
Architect: BPA Architects
Source: BPA Architects
5. Rothwell Heights
Location: Ottawa, ON
Source: KPMB Architects
6. Beechwood
Location: Ottawa, ON
Source: BPA Architects
7. Rockcliffe Village
Location: Ottawa, ON
Source: BPA Architects
8. National Research Council
Location: Ottawa, ON
Source: BPA Architects
9. Montreal Road
Location: Ottawa, ON
Source: KPMB Architects
10. Vanier
Location: Ottawa, ON
Source: BPA Architects
11. Lindenlea
Location: Ottawa, ON
Source: BPA Architects
12. Cardinal Glen
Location: Ottawa, ON
Source: BPA Architects
13. Beacon Hill
Location: Ottawa, ON
Source: BPA Architects
14. Overbrook
Location: Ottawa, ON
Source: BPA Architects
15. New Edinburgh
Location: Ottawa, ON
Source: BPA Architects

1.03 HISTORY AND EVOLUTION

1. 1825:
Source: Coffin, William. *Plan of the Township Gloucester*. Library and Archives Canada, 20 August 1825.
2. 1876:
Source: *Illustrated Historical Atlas of the County of Carleton, Ontario*. Toronto: H. Belden & Co., 1876.

1.04 HISTORY AND EVOLUTION

1. 1932:
Source: National Aerial Photograph Library (NAPL): 1 June 1932.
2. 1945:
Source: National Aerial Photograph Library (NAPL): 19 October 1945.

1.05 CANADA LANDS COMPANY

- 1,2,3. Benny Farm Housing
Location: Montreal, PQ
Architect: Saia Barbarese, Lavendière Giguere Architectes
Source: *Architecture Canada 2002: The Governor General's Medals in Architecture*. Halifax: TUNS Press, 2002.
- 4.5. Garrison Woods
Location: Calgary, AB
Photographer: Linda Hackman, CLC

1.06 INNOVATION TEAM

1. King James Place
Location: Toronto, ON
Architect: KPMB Architects
Photographer: Steven Evans
2. NorthPoint Development
Location: Cambridge, MA
Urban Designer: Greenberg Consultants Inc.
Landscape Architect: Michael Van Valkenberg
Source: Greenberg Consultants Inc.
3. Vaughan Civic Center
Location: Vaughan, ON
Architect: KPMB Architects
Landscape Architects: Phillips Farevaag Smalenberg
Photographer: Ben Rahn/ Aframe
4. Strathcona Heights
Location: Ottawa, ON
Architect: BPA Architects
Source: BPA Architects

1.07 PUBLIC CONSULTATION AND SCHEDULE

1.08 OTTAWA OFFICIAL PLAN VISION

1. Ottawa Official Plan Vision
Source: City of Ottawa Official Plan (2003) Schedule B – Urban Policy Plan.
2. View of the City of Ottawa
Location: Ottawa, ON
Source: Von Baich, Paul. *Ottawa Stories: Images Through the Season*. Toronto: Bubna-Lennkh Publishing, 1994.

1.09 TRANSPORTATION

1. Preliminary Design Plans: Rapid Transit Network
Author: City of Ottawa; 2006
Source: http://www.ottawa.ca/residents/rt/ns_line/preliminary_designs/rapid_transit_network.jpg
2. Light Rapid Transit
Location: Ottawa, ON
Source: www.railpictures.net/viewphoto.php?id=36255

1.10 CHILDREN'S VISIONS

1. Rockcliffe Redevelopment: Imagining The Future!
Location: Manor Park Elementary School, Ottawa, ON
Source: BPA Architects

1.11 GREEN ZONES

1. Rockcliffe Site: Panorama
Location: Ottawa, ON
Source: KPMB Architects

1.12 LANDSCAPE CHARACTER

1. Rockcliffe site: looking east down existing watercourse
Location: Ottawa, ON
Source: Phillips Farevaag Smalenberg
2. Rockcliffe site: view looking north from behind houses on Dubhe
Location: Ottawa, ON
Source: Phillips Farevaag Smalenberg
3. Rockcliffe site: view northeast from Hemlock
Location: Ottawa, ON
Source: Phillips Farevaag Smalenberg
4. Rockcliffe site: existing rock along the north boundary of the site
Location: Ottawa, ON
Source: Phillips Farevaag Smalenberg
5. Rockcliffe site: view towards Ottawa River
Location: Ottawa, ON
Source: KPMB Architects
6. Rockcliffe site: view east behind houses on Rigel
Location: Ottawa, ON
Source: Phillips Farevaag Smalenberg

1.13 EXISTING TREES

1. Landscape Types: Existing Vegetation Survey
Source: Canada Lands Company. *Former CFB Rockcliffe: Existing Conditions Summary Report*. December 2005.
- 2,3. Rockcliffe site: Trees
Location: Ottawa, ON
Source: KPMB Architects

1.14 LANDSCAPE PLACEMAKING

1. Latitude Nord Park
Location: Munich, Germany
Landscape Architect: Gilles Vexlard and Laurence Vacherot
Photographer: Rudiger Haase
Source: Deutscher, Bund. *Changing Places: Contemporary German Landscape Architecture*. Basel, Switzerland: Birkhauser, 2005.
2. Central Park
Location: Manhattan, NY
Landscape Architect: Frederick Law Olmsted
Source: Phillips Farevaag Smalenberg
3. Hastings Park Water Channel
Location: Vancouver, BC
Landscape Architect: Phillips Farevaag Smalenberg
Photographer: Chris Phillips
Source: Phillips Farevaag Smalenberg

1.15 TRAIL NETWORKS

1. Winter Trails
Location: Ottawa, ON
Photographer: Malik
Source: Karsh, Malik. *Ottawa and the Capital Region*. Toronto: Key Porter Books Ltd, 1990.
2. Lunch Time Joggers
Location: Ottawa, ON
Photographer: Paul Von Baich
Source: Von Baich, Paul. *Ottawa Stories: Images Through the Season*. Toronto: Bubna-Lennkh Publishing, 1994.
3. Gatineau Park
Location: Gatineau Park, PQ
Source: Ottawa. Vancouver/Toronto: Prospero Books: 1997.
4. Cross Country Skiing
Location: Camp Fortune, Quebec
Photographer: Malik
Source: http://www.cspsc.org/photos_12-e.asp
5. Walking Trail
Source: <http://www.rapidesfoundation.org/piclib/133.jpg>
6. Coal Harbour
Location: Vancouver, BC
Landscape Architect: Phillips Farevaag Smalenberg
Source: Phillips Farevaag Smalenberg
7. Roller Skiers
Location: Gatineau Park, PQ
Photographer: Malik
Source: Karsh, Malik. *Ottawa and the Capital Region*. Toronto: Key Porter Books Ltd, 1990.
8. View Towards Ottawa River
Location: Ottawa, ON
Source: KPMB Architects
9. The Canadian Tulip Festival
Location: Ottawa, ON
Photographer: Malik
Source: Ottawa: *English Edition*. Canada: Irving Weisdorf & Co. Ltd., 1995.
10. Walking Trail
Source: <http://www.carrs.msu.edu/trails/Grandma%20&%20Granddaughter%20walking.jpg>
11. Ottawa River Trail
Location: Ottawa, ON
Source: KPMB Architects

1.16 MOBILITY

1. Coal Harbour
Location: Vancouver, BC
Landscape Architect: Phillips Farevaag Smalenberg
Source: Phillips Farevaag Smalenberg
2. Regent Park Streetscape
Location: Toronto, ON
Architect: Greenberg Consultants Inc., GHK International and Markson Borooh Architects.
Source: Greenberg Consultants Inc.
3. OC Transpo Bus
Location: Ottawa, ON
Source: <http://www.barraclou.com/bus/ottawa/>
4. Runners
Location: Kingston, ON
Photographer: Test/Corporation
5. Bicycle Lanes
Location: Freiburg, Germany
Photographer: Jayson Antonoff, International Sustainable Solutions
Source: <http://www.i-sustain.com/photoGallery/Germany/Freiburg/slides/DSCN1607.htm>

1.17 PLACE TO LIVE

1. Sustainable Housing
Location: Malmö, Sweden
Architect: Moore Ruble Yudell Architects and Planners and FFNS Arkitekten
Source: Yudell, Buzz, John Ruble & Robert Campbell. *Moore Ruble Yudell: Making Place*. Images Publishing Group, July 2004
2. Rockcliffe site: PMQ Single-family Housing
Location: Ottawa, ON
Source: KPMB Architects
3. Rockcliffe site: PMQ Multi-unit Housing
Location: Ottawa, ON
Source: KPMB Architects
4. The Young Center for the Performing Arts
Location: Toronto, ON
Architect: KPMB Architects
Photographer: Tom Arban Photography
5. The Barn at Fallingwater
Location: Mill Run, PA
Architect: Bohlin Cywinski Jackson, Architects
Source: <http://www.aia.org/aiarchitect/hisweek05/tw0422/0422cote.htm>
6. Woodsworth College
Location: Toronto, ON
Architect: KPMB Architects
Source: KPMB Architects
7. Wrap House
Location: London, UK
Architect: Alison Brooks Architects
Source: Bullivant, Lucy. "Three Houses." *The Plan: Architecture and Technologies in Detail* No. 013, March/April 2006.
8. The Residences on Georgia
Location: Vancouver, BC
Architect: James K.M. Cheng Architects Ltd.
Source: *Canadian Architect*, August 1999.
9. Complex Red Tree Frog
Location: Burmooss, Austria
Architect: Splitterwerk
Photographer: Paul Ott
Source: Broto, Carles. *New Housing Concepts*. Barcelona: Leading International Publishing Group, 2000.

1.18 MIXED USE

1. The Byward Market
Location: Ottawa, ON
Photographer: Malik
Source: Karsh, Malik. *Ottawa and the Capital Region*. Toronto: Key Porter Books Ltd., 1990.
2. Chestnut Café
Location: Philadelphia, PA
Source: http://www.purple.com/walk-to-work/37-38_and_chestnut_cafe_Thu-07-Aug-2003_11-24.html
3. KPMB Architect's Studio
Location: Toronto, ON
Source: KPMB Architects

1.19 SUSTAINABLE DESIGN

1. The Canadian Embassy in Berlin
Location: Berlin, Germany
Architect: KPMB Architects
Source: KPMB Architects
2. Jackson Triggs Winery
Location: Niagara-on-the-Lake, ON
Architect: KPMB Architects
Photographer: Tom Arban Photography
3. Waterwijk Housing
Location: The Hague, Netherlands
Architect: MVRDV.
Source: MVRDV. "Patio Island, Hagen Island and Water Villas." *The Plan: Architecture and Technologies in Detail* No. 013, March/April 2006.

1.20

1. Craven Road Houses
Location: Toronto, ON
Architect: Shim & Sutcliffe
Photographer: Michael Awad
Source: Mostaedi, Arian. *Innovative Houses*. Barcelona: Links International, 2004.
11. Row Houses
Location: Copenhagen Malmö
Photographer: Jim Mueller, JC Mueller
Source: <http://www.isustain.com/photoGallery/Scandinavia/Malm%F6/Western%20Harbor/slides/Copenhagen%20Malm%9620904%20JCM0196.htm>
8. Rideau Canal
Location: Ottawa, ON
Photographer: L. Fisher
Source: Ottawa: *English Edition*. Canada: Irving Weisdorf & Co. Ltd., 1995.
9. Cycling
Location: Malmö, Sweden
Photographer: Jim Mueller, JC Mueller
Source: <http://www.isustain.com/photoGallery/Scandinavia/Mobility/Bicycling/slides/Copenhagen%20Malm%9620904%20JCM01161.htm>
10. Traffic Lights
Location: Malmö, Sweden
Photographer: Jim Mueller, JC Mueller
Source: <http://www.isustain.com/photoGallery/Scandinavia/Mobility/Bicycling/slides/Copenhagen%20Malm%9620904%20JCM01168.htm>
11. Smart Car
Location: Berlin, Germany
Source: http://www.radkatie.com/Berlin/Berlin_Gallery_39.html

1.21

4. The Great Glebe Garage Sale
Location: Ottawa, ON
Source: KPMB Architects
5. Brown's Inlet - Glebe
Location: Ottawa, ON
Photographer: Paul Von Baich
Source: Von Baich, Paul. *Ottawa Stories: Images Through the Season*. Toronto: Bubna-Lennkh Publishing, 1994.
6. Magnolia Fine Foods
Location: Toronto, ON
Source: KPMB Architects
7. Nicolas
Location: Toronto, ON
Architect: KPMB Architects
Photographer: Ben Rahn/ Aframe
8. Copenhagen Streetscape
Location: Copenhagen, Denmark
Photographer: Photo by Denise Fong, Candela
Source: <http://www.i-sustain.com/photoGallery/Scandinavia/General/slides/DSCF3959.htm>
9. 1547 Blake Street
Location: Denver, CO
Architect: KPMB Architects
Source: KPMB Architects
10. Airfields
Location: Ottawa, ON
Source: KPMB Architects
11. Water Treatment Plant
Location: New South Wales, Australia
Architect: Woods Bagot Pty Ltd.
Photographer: Martin van der Wal, Dyrarchy Pty Ltd.
Source: Beaver, Robyn Ed. *Industrial Spaces: A Pictorial Review*. Australia: The Images Publishing Group, 2003.
12. Streetscape
Location: Vancouver, BC
Source: Phillips Farevaag Smalenberg
13. Canteen
Location: Ottawa, ON
Source: KPMB Architects
14. College Fruit and Flower
Location: Toronto, ON
Source: KPMB Architects
15. The Urban Cyclist
Location: Toronto, ON
Source: KPMB Architects
16. Housing
Location: Malmö, Sweden
Photographer: Mark Brumbaugh, Brumbaugh & Associates
Source: http://www.i-sustain.com/photoGallery/Scandinavia/Malm%F6/Western%20Harbor/slides/110_1050.htm
17. Cartier Watch Factory
Location: Villaret, Switzerland
Architect: Jean Nouvel
Source: Adam, Jurgen, Katharina Hausmann & Frank Jutner. *Industrial Buildings - A Design Manual*. Basel: Birkhauser, 2004.



CANADA LANDS COMPANY
SOCIÉTÉ IMMOBILIÈRE DU CANADA

KPMB ARCHITECTS
GREENBERG CONSULTANTS INC.
BPA ARCHITECTS
PFS LANDSCAPE ARCHITECTS

DELCAN CORPORATION
IBI GROUP
HALSALL ENGINEERS
TO BE ANNOUNCED

COMMUNITY DESIGN PLAN
PLAN DE CONCEPTION COMMUNAUTAIRE

27 JUNE 2006/ 27 JUIN 2006

REDEVELOPMENT / REDÉVELOPPEMENT DE

ROCKCLIFFE

4. The Aquapoint
Location: Malmo, Sweden
Photographer: Mark Brumbaugh, Brumbaugh & Associates
Source: <http://www.i-sustain.com/photoGallery/Scandinavia/Malm/F6/Western%20Harbor/slides/The%20aquapoint.htm>
5. Housing
Location: Freiburg, Germany
Photographer: Jayson Antonoff, International Sustainable Solutions
Source: <http://www.i-sustain.com/photoGallery/Germany/Freiburg/slides/DSCN1621.htm>
6. Green Roofs
Location: Freiburg, Germany
Photographer: Jayson Antonoff, International Sustainable Solutions
Source: <http://www.i-sustain.com/photoGallery/Germany/Freiburg/slides/DSCN1596.htm>
7. Rain Water Collection
Source: Ryker, Lori. *Off the Grid: Modern Homes and Alternative Energy*. Utah: Gibbs Smith, 2005.
8. Ghost VI
Location: Kingsburg, NS
Architect: Brian Mackay-Lyons
Source: Quanttrill, Malcolm. *Plain Modern: The Architecture of Brian Mackay-Lyons*. New York: Princeton Architectural Press, 2005.
9. Barsotti Residence
Location: Laytonville, CA
Architect: Arkin/ Tilt Architects
Source: Ryker, Lori. *Off the Grid: Modern Homes and Alternative Energy*. Utah: Gibbs Smith, 2005.
- 1.20 PUBLIC REALM**
1. UC San Diego, Library Walk
Location: San Diego, CA
Landscape Architect: Peter Walker and Partners Landscape Architects
Source: *Peter Walker & Partners: Defining the Craft*. ORO Editions, 2005
2. Dublin Streetscape
Location: Dublin, Ireland
Source: <http://community.webshots.com/photo/yahoo/550152038/2002807270090165843uukVJ#>
3. Richmond City Hall Plaza and Market
Location: Richmond, BC
Landscape Architect: Phillips Farevaag Smalenberg
Source: Phillips Farevaag Smalenberg
4. Sudstadtpark
Location: Furth, Germany
Designer: Werkgemeinschaft Freiraum
Photographer: Werkgemeinschaft Freiraum
Source: Deutscher, Bund. *Changing Places: Contemporary German Landscape Architecture*. Basel, Switzerland: Birkhauser, 2005.
5. Bank Street
Location: Ottawa, ON
Source: KPMB Architects
6. Outdoor Patio
Location: Oulu, Finland
Source: http://www.wogger.com/gallery/garlic_night/aah
7. Winter Scene on the Canal
Location: Ottawa, ON
Photographer: Paul Von Baich
Source: Von Baich, Paul. *Ottawa Stories: Images Through the Season*. Toronto: Bubna-Lennkh Publishing, 1994.
8. Theatre Square
Location: Rotterdam, Netherlands
Architect: West 8
Source: Molinari, Luca Ed. *West 8*. Italy: Skira, 2000.
9. Montreal Jazz Festival
Location: Montreal, PQ
Source: <http://spiegel.blogspot.com/>
10. Window Shopping
Location: Malmo, Sweden
Photographer: Mahlon Clements, ZGF
Source: <http://www.i-sustain.com/photoGallery/Scandinavia/Mobility/Bicycling/slides/PICT0174.htm>
- 1.21 SITE TOPOGRAPHY**
1. Rockcliffe Site: Panorama
Location: Ottawa, ON
Source: KPMB Architects
- 1.22 STORMWATER**
1. Rockcliffe site: view east of existing watercourse
Location: Ottawa, ON
Source: Phillips Farevaag Smalenberg
- 1.23 WORKING LANDSCAPE**
1. Fargo and Maestas Residence
Location: Clyde Park, MT
Architect: Ryker/ Nave Design
Source: Ryker, Lori. *Off the Grid: Modern Homes and Alternative Energy*. Utah: Gibbs Smith, 2005.
2. Oberlin College Living Machine
Location: Oberlin, OH
Designer: Living Designs Group
Source: http://www.nrel.gov/buildings/highperformance/oberlin_gallery.html
3. Solar Power Plant
Location: Germany
Photographer: Jayson Antonoff, International Sustainable Solutions
Source: <http://www.i-sustain.com/photoGallery/Germany/Solar%20Power%20Plant/slides/DSCN1647.htm>
4. Arboretum
Location: Ottawa, ON
Source: *Ottawa*. Vancouver/Toronto: Prospero Books, 1997.
5. Experimental Farm
Location: Ottawa, ON
Source: *Ottawa*. Vancouver/Toronto: Prospero Books, 1997.
6. Retention Ponds
Source: KPMB Architects
7. Jackson Triggs Winery
Location: Niagara-on-the-Lake, ON
Architect: KPMB Architects
Photographer: Tom Arban Photography
8. Stratford Gardens
Location: Stratford, ON
Architect: KPMB Architects
Photographer: Michael Awad
9. Orchards
Location: Germany
Source: KPMB Architects
- 1.24 REGIONAL DESTINATIONS**
1. National Botanical Gardens of Wales
Location: Wales, United Kingdom
Architect: Foster and Partners
Source: Adam, Jurgen, Katharina Hausmann & Frank Jutner. *Industrial Buildings- A Design Manual*. Basel: Birkhauser, 2004.
2. Richmond City Hall
Location: Richmond, BC
Architect: KPMB Architects
Photographer: Peter Aaron/ESTO
3. Reichstag
Location: Berlin, Germany
Architect: Foster and Partners
Source: Schulz, Bernhard. *The Reichstag: The Parliament Building by Norman Foster*. Prestel Verlag, 2000.
4. Eden Project Greenhouse
Location: Cornwall, United Kingdom
Architect: Nicholas Grimshaw
Source: Adam, Jurgen, Katharina Hausmann & Frank Jutner. *Industrial Buildings- A Design Manual*. Basel: Birkhauser, 2004.
5. Canadian Embassy in Berlin
Location: Berlin, Germany
Architect: KPMB Architects
Photographer: Ben Rahn/Aframe
6. Biosphere
Location: Montreal, PQ
Architect: Buckminster Fuller
Photographer: Michael Peiffer
Source: http://www.treearth.com/gallery/North_America/Canada/photo1022.htm
7. Children's Museum
Location: Pittsburg, PA
Architect: Koning Eizenberg Architecture, Perkins Eastman
Photographer: Albert Vacerka
Source: <http://www.pittsburghkids.org/SmoothCMS/ContentObject/2ABC8150-6401-4E0E-B5CC-B82A868C0A6.pdf>
- 1.25 A WALKABLE COMMUNITY**
1. Central Park
Location: Manhattan, NY
Landscape Architect: Frederick Law Olmsted
Source: Phillips Farevaag Smalenberg
2. Streetscape
Location: Horseshoe Bay, BC
Source: Phillips Farevaag Smalenberg
- 1.26 INNOVATIVE PLACEMAKING**
1. Parc Andre Citroen
Location: Paris, France
Architect: Patrick Berger, Gilles Clement, J.P. Viguier & J.F. Jodry Alain Provost
Source: Bédarida, Marc. "French Tradition and Ecological Paragigm." *Lotus International* 87, November, 1995.
- 1.27 IMAGE CREDITS**
- 1.28 IMAGE CREDITS**
- 1.29 IMAGE CREDITS**
- 1.01 CONTEXTE URBAIN**
1. Photo aérienne
Provenance: City of Ottawa, 2005 Orthophotographie
- 1.02 CONTEXTE DU QUARTIER**
1. Photo aérienne
Provenance: City of Ottawa, 2005 Orthophotographie
2. Manor Park
Ottawa, (Ontario)
Provenance: BPA Architects
3. Fairhaven
Ottawa, (Ontario)
Provenance: KPMB Architects
4. Thorncliffe Village
Ottawa, (Ontario)
Architect: BPA Architects
Provenance: BPA Architects
5. Rothwell Heights
Ottawa, (Ontario)
Provenance: KPMB Architects
6. Beechwood
Ottawa, (Ontario)
Provenance: BPA Architects
7. Rockcliffe Village
Ottawa, (Ontario)
Provenance: BPA Architects
8. Conseil national de recherches
Ottawa, (Ontario)
Provenance: BPA Architects
9. Chemin de Montréal
Ottawa, (Ontario)
Provenance: KPMB Architects
- 2,3,4. Benny Farm Housing
Montréal, (Québec)
Architect: Saia Barbarese, Lavendière Giguère Architectes
Provenance: *Architecture Canada 2002: The Governor General's Medals in Architecture*. Halifax: TUNS Press, 2002.
- 5,6. Garrison Woods
Calgary, (Alberta)
Photographe: Linda Hackman SIC
- 1.05 SOCIÉTÉ IMMOBILIÈRE DU CANADA**
1. Photo aérienne de Benny Farm
Montréal, (Québec)
Architect: L'OEUF Architecture
Photographe: Matt Makaukas, L'OEUF Architecture
- 2,3,4. Benny Farm Housing
Montréal, (Québec)
Architect: Saia Barbarese, Lavendière Giguère Architectes
Provenance: *Architecture Canada 2002: The Governor General's Medals in Architecture*. Halifax: TUNS Press, 2002.
- 5,6. Garrison Woods
Calgary, (Alberta)
Photographe: Linda Hackman SIC
- 1.06 INNOVATION TEAM**
1. King James Place
Toronto, (Ontario)
Architect: KPMB Architects
Photographe: Steven Evans
2. NorthPoint Development
Cambridge, (Massachusetts)
Design urbain: Greenberg Consultants Inc.
Architecte paysager: Michael Van Valkenburgh
Provenance: Greenberg Consultants Inc.
3. Vaughan Civic Center
Vaughan, (Ontario)
Architect: KPMB Architects
Architecte paysager: Phillips Farevaag Smalenberg
Photographe: Ben Rahn/ Aframe
4. Strathcona Heights
Ottawa, (Ontario)
Architect: BPA Architects
Provenance: BPA Architects
- 1.07 CONSULTATION PUBLIQUE ET HORAIRE**
- 1.08 VISION DU PLAN OFFICIEL D'OTTAWA**
1. Vision du plan officiel d'Ottawa
Provenance: Plan officiel de la ville d'Ottawa (2003) Annexe B – Plan des politiques d'urbanisme.
2. Vue de la ville d'Ottawa
Ottawa, (Ontario)
Provenance: Von Baich, Paul. *Ottawa Stories: Images Through the Season*. Toronto: Bubna-Lennkh Publishing, 1994.
3. 1968:
Provenance: Bibliothèque nationale de photos aériennes : mai 1968.
4. Premier vol expérimental de courrier entre Toronto et Ottawa, le 27 août 1918
Provenance: National Aviation Museum Photo Essay Collection - *A History of the Rockcliffe Site*, p 5; Archives du Canada PA 59985; le 27 août 1918.
5. L'hangar Bessonneau à Rockcliffe, ca 1922
Provenance: National Aviation Museum Photo Essay Collection - *A History of the Rockcliffe Site*, p 8; Public Archives of Canada PA 62272.
6. Vickers Vancouver 1 Flying Boat, 1929
Provenance: National Aviation Museum Photo Essay Collection - *A History of the Rockcliffe Site*, p 11; Public Archives of Canada PA 62570.
7. Whitworth Atlas 1 Aircraft, juillet 1934
Provenance: National Aviation Museum Photo Essay Collection - *A History of the Rockcliffe Site*, p 17; Public Archives of Canada PA 63135.
8. No. 110 (Army Cooperation) Squadron, February 1940
Provenance: National Aviation Museum Photo Essay Collection - *A History of the Rockcliffe Site*, p 23; Ministère de la Défense Nationale PL 383.
9. Housing Canada's National Aeronautical Collection, 1964
Provenance: National Aviation Museum Photo Essay Collection - *A History of the Rockcliffe Site*, p 38; Musée national de l'aviation 18949.
- 1.09 TRANSPORTS**
1. Dessins préliminaires: Transport rapide et léger
Auteur: Ville d'Ottawa; 2006
Provenance: http://www.ottawa.ca/residents/lr/ins_line/preliminary_designs/rapid_transit_network.jpg
2. Transport rapide et léger
Ottawa, (Ontario)
Provenance: www.railpictures.net/viewphoto.php?id=36255
- 1.10 VISIONS DES ENFANTS**
1. Redéveloppement de Rockcliffe: Imaginer le futur
Manor Park Elementary School, Ottawa, (Ontario)
Provenance: BPA Architects
- 1.11 ZONES VERTES**
1. Site de Rockcliffe: Panorama
Ottawa, (Ontario)
Provenance: KPMB Architects
- 1.12 CARACTÈRE PAYSAGER**
1. Site de Rockcliffe: vue vers l'est sur cours d'eau existant
Ottawa, ON
Provenance: Phillips Farevaag Smalenberg
2. Site de Rockcliffe: vue vers le nord derrière les maisons sur la rue Dubhe
Ottawa, (Ontario)
Provenance: Phillips Farevaag Smalenberg
3. Site de Rockcliffe: vue vers le nord-est de la rue Hemlock
Ottawa, (Ontario)
Provenance: Phillips Farevaag Smalenberg
4. Site de Rockcliffe: rochers sur la limite nord du site
Ottawa, (Ontario)
Provenance: Phillips Farevaag Smalenberg
5. Site de Rockcliffe: vue vers la Rivière des Outaouais
Ottawa, (Ontario)
Provenance: Phillips Farevaag Smalenberg
6. Site de Rockcliffe: vue vers l'est derrière les maisons sur la rue Rigel
Ottawa, (Ontario)
Provenance: Phillips Farevaag Smalenberg
- 1.13 ARBRES EXISTANTS**
1. Caractère paysager: Inventaire de la végétation
Provenance: Société Immobilière du Canada. *Rapport sommaire sur l'état du site : Ancienne BFC Rockcliffe*. décembre 2005.
- 2,3. Site de Rockcliffe: Arbres
Ottawa, (Ontario)
Provenance: KPMB Architects
- 1.14 AMÉNAGEMENT PAYSAGER**
1. Parc Latitude Nord
Munich, Allemagne
Architecte paysager: Gilles Vexlard and Laurence Vacherot
Photographe: Rudiger Haase
Provenance: Deutscher, Bund. *Transformation des lieux: Architecture paysager allemande contemporaine*. Bâle, Suisse : Birkhauser, 2005.
2. Central Park
Manhattan, NY
Architecte paysager: Frederick Law Olmsted
Provenance: Phillips Farevaag Smalenberg



3. Exposition régionale bavaroise d'horticulture 2004
Burghausen, Allemagne
Architecte paysager: Rehwaldt Landschaftsarchitekten
Photographe: Rehwaldt Landschaftsarchitekten
Provenance: Deutscher, Bund. *Transformation des lieux: Architecture paysager allemande contemporaine*. Bâle, Suisse: Birkhauser, 2005.
3. Hastings Park Water Channel
Vancouver
Architecte paysager: Phillips Farevaag Smallenberg
Photographe: Chris Phillips
Provenance: Phillips Farevaag Smallenberg
4. Cours extérieures
Jena, Allemagne
Architecte paysager: Stock + Partner
Photographe: Stock + Partner
Provenance: Deutscher, Bund. *Transformation des lieux: Architecture paysager allemande contemporaine*. Bâle, Suisse: Birkhauser, 2005.
- 1.15 RESEAUX DES SENTIERS**
1. Sentiers d'hiver
Ottawa, (Ontario)
Photographe: Malak
Provenance: Karsh, Malak. *Ottawa and the Capital Region*. Toronto: Key Porter Books Ltd. 1990.
2. Jogging de midi
Ottawa, (Ontario)
Photographe: Paul Von Baich
Provenance: Von Baich, Paul. *Ottawa Stories: Images Through the Season*. Toronto: Bubna-Lennkh Publishing, 1994.
3. Parc de la Gatineau
Parc de la Gatineau, (Québec)
Provenance: Ottawa. Vancouver/Toronto: Prospero Books: 1997.
4. Ski de fond
Camp Fortune, (Québec)
Photographe: Malak
Provenance: http://www.cspsc.org/photos_12-e.asp
5. Piste
Provenance: <http://www.rapidesfoundation.org/piclib/133.jpg>
6. Coal Harbour
Vancouver
Architecte paysager: Phillips Farevaag Smallenberg
Provenance: Phillips Farevaag Smallenberg
7. Ski en roulotte
Parc de la Gatineau, (Québec)
Photographe: Malak
Provenance: Karsh, Malak. *Ottawa and the Capital Region*. Toronto: Key Porter Books Ltd., 1990.
8. Vue vers la Rivière des Outaouais
Ottawa, (Ontario)
Provenance: KPMB Architects
9. Festival canadien des tulipes
Ottawa, (Ontario)
Photographe: Malak
Provenance: Ottawa: *English Edition*. Canada: Irving Weisdorf & Co. Ltd., 1995.
10. Piste
Provenance: <http://www.carrs.msu.edu/trails/Grandma%20&%20Granddaughter%20walking.jpg>
11. Sentier de la Rivière des Outaouais
Ottawa, (Ontario)
Provenance: KPMB Architects
- 1.16 MOBILITE**
1. Coal Harbour
Vancouver
Architecte paysager: Phillips Farevaag Smallenberg
Provenance: Phillips Farevaag Smallenberg
2. Regent Park – Paysage urbain
Toronto, (Ontario)
Architecte: Greenberg Consultants Inc., GHK International and Markson Borooh Architects.
Provenance: Greenberg Consultants Inc.
3. OC Transpo
Ottawa, (Ontario)
Provenance: <http://www.barracloou.com/bus/ottawa/>
4. Courreurs
Kingston, (Ontario)
Photographe: TestCorporation
5. Pistes cyclables
Freiburg, Allemagne
Photographe: Jayson Antonoff, International Sustainable Solutions
Provenance: <http://www.i-sustain.com/photoGallery/Germany/Freiburg/slides/DSCN1607.htm>
6. Escalier adapté au cyclists
Malmo, Suède
Photographe: Jayson Antonoff, International Sustainable Solutions
Provenance: <http://www.i-sustain.com/photoGallery/Scandinavia/Mobility/Bicycling/gallery.htm>
7. Transport rapide et léger
Ottawa, (Ontario)
Provenance: www.railpictures.net/viewphoto.php?id=36255
8. Canal Rideau
Ottawa, (Ontario)
Photographe: L. Fisher
Provenance: Ottawa: *English Edition*. Canada: Irving Weisdorf & Co. Ltd., 1995.
9. Cyclisme
Malmo, Suède
Photographe: Jim Mueller, JC Mueller
Provenance: <http://www.i-sustain.com/photoGallery/Scandinavia/Mobility/Bicycling/slides/Copenhagen%20Malmo%20904%20JCM01161.htm>
10. Feux de circulation
Malmo, Suède
Photographe: Jim Mueller, JC Mueller
Provenance: <http://www.i-sustain.com/photoGallery/Scandinavia/Mobility/Bicycling/slides/Copenhagen%20Malmo%20904%20JCM01168.htm>
11. Voiture intelligent
Berlin, Allemagne
Provenance: http://www.radkatie.com/Berlin/Berlin_Gallery_39.html
- 1.17 CADRE DE VIE**
1. Développement durable
Malmo, Suède
Architecte: Moore Ruble Yudell Architects and Planners and FFNS Arkitekten
Provenance: Yudell, Buzz, John Ruble & Robert Campbell. *Moore Ruble Yudell: Making Place*. Images Publishing Group, juillet 2004
2. Site de Rockcliffe: maisons militaires unifamiliales
Ottawa, (Ontario)
Provenance: KPMB Architects
3. Site de Rockcliffe: maisons militaires multifamiliales
Ottawa, (Ontario)
Provenance: KPMB Architects
4. The Young Center for the Performing Arts
Toronto, (Ontario)
Architect: KPMB Architects
Photographe: Tom Arban Photography
5. The Barn at Fallingwater
Mill Run, Pennsylvanie
Architecte: Bohlin Cywinski Jackson, Architects
Provenance: <http://www.aia.org/aiarchitect/thisweek05/tw0422/0422cote.htm>
6. Woodsworth College
Toronto, (Ontario)
Architecte: KPMB Architects
Provenance: KPMB Architects
7. Wrap House
London, RU
Architecte: Alison Brooks Architects
Provenance: Bullivant, Lucy. "Three Houses." *The Plan: Architecture and Technologies in Detail No. 013*, mars/avril 2006.
8. The Residences on Georgia
Vancouver, CB
Architecte: James K.M. Cheng Architects Ltd.
Provenance: *Canadian Architect*, août 1999.
9. Complex Red Tree Frog
Burmoss, Autriche
Architecte: Splitterwerk
Photographe: Paul Ott
Provenance: Broto, Carles. *New Housing Concepts*. Barcelona: Leading International Publishing Group, 2000.
10. Craven Road Houses
Toronto, (Ontario)
Architecte: Shim & Sutcliffe
Photographe: Michael Awad
Provenance: Mostaedi, Arnan. *Innovative Houses*. Barcelona: Links International, 2004.
11. Maisons de ville
Copenhague Malmo
Photographe: Jim Mueller, JC Mueller
Provenance: <http://www.i-sustain.com/photoGallery/Scandinavia/Malm%F6/Western%20Harbor/slides/Copenhagen%20Malm%20904%20JCM00196.htm>
12. The Residences on Georgia
Vancouver, CB
Architecte: James K.M. Cheng Architects Ltd.
Provenance: http://www.cnu.org/images/image_bank/Vancouver_2_LF.jpg
13. 3 Maisons unifamiliales
Argovia, Suisse
Architecte: Silvia Gmur & Livio Vaccini
Photographe: Vaclav Sedy
Provenance: Mostaedi, Arnan. *Innovative Houses*. Barcelona: Links International, 2004.
14. Maison R128
Stuttgart, Allemagne
Ingénieur: Werner Sobek
Provenance: Ryker, Lori. *Off the Grid: Modern Homes and Alternative Energy*. Utah: Gibbs Smith, 2005.
15. Maison Passive
Freiburg, Allemagne
Architecte: Meinhard Hansen
Provenance: http://www.ise.fhg.de/english/press/pi_2004/presseversand/passvhaus_markstudie.html
16. Maison à Leymen
Haut Rhine, France
Architecte: Herzog & de Meuron
Provenance: Amelar, Sarah. "In Rural France, Herzog & de Meuron Reconsider the Essence of House." *Architectural Record*, 04/1991.
17. Appartement à Laufenburg
Laufenburg, Suisse
Architecte: Christian Sumi & Marianne Burkhalter
Photographe: Heinrich Helfenstein
Provenance: Broto, Carles. *New Housing Concepts*. Barcelona: Leading International Publishing Group, 2000.
18. Logements à Paris 20
Paris, France
Architecte: Philippe Madec
Photographe: Hervé Abbadie
Provenance: Broto, Carles. *New Housing Concepts*. Barcelona: Leading International Publishing Group, 2000.
19. Tango Buildings
Malmo, Suède
Architecte: Moore Ruble Yudell Architects and Planners and FFNS Arkitekten
Provenance: <http://www.i-sustain.com/photoGallery/Scandinavia/Energy/General/slides/Residential%20solar%20panels.htm>
20. Logement pour personnes âgées
Niejmegen, Pays Bas
Architecte: Erick van Egeraat Architects
Photographe: Christian Richters
Provenance: Broto, Carles. *New Housing Concepts*. Barcelona: Leading International Publishing Group, 2000.
- 1.18 USAGES MIXTES**
1. Marché Byward
Ottawa, (Ontario)
Photographe: Malak
Provenance: Karsh, Malak. *Ottawa and the Capital Region*. Toronto: Key Porter Books Ltd., 1990.
2. Chestnut Café
Philadelphie, Pennsylvanie
Provenance: http://www.purple.com/walk-to-work/37-38_and_chestnut_cafe_Thu-07-Aug-2003_11_24.html
3. Studio de KPMB Architects
Toronto, (Ontario)
Provenance: KPMB Architects
4. The Great Giebe Garage Sale
Ottawa, (Ontario)
Provenance: KPMB Architects
5. Brown's Inlet - Giebe
Ottawa, (Ontario)
Photographe: Paul Von Baich
Provenance: Von Baich, Paul. *Ottawa Stories: Images Through the Season*. Toronto: Bubna-Lennkh Publishing, 1994.
6. Magnolia Fine Foods
Toronto, (Ontario)
Provenance: KPMB Architects
7. Nicolas
Toronto, (Ontario)
Architect: KPMB Architects
Photographe: Ben Rahn/ Aframe
8. Paysage urbain à Copenhague
Copenhague, Danemark
Photographe: Photo de Denise Fong, Candela
Provenance: <http://www.i-sustain.com/photoGallery/Scandinavia/General/slides/DSCF0359.htm>
9. 1547 Rue Blake
Denver, Colorado
Architecte: KPMB Architects
Provenance: KPMB Architects
10. Terrain d'aviation
Ottawa, (Ontario)
Provenance: KPMB Architects
11. Usine de traitement de l'eau
New South Wales, Australie
Architecte: Woods Bagot Pty Ltd.
Photographe: Martin van der Wal, Dyarchy Pty Ltd.
Provenance: Beaver, Robyn Ed. *Industrial Spaces: A Pictorial Review*. Australia: The Images Publishing Group, 2003.
12. Paysage urbain
Vancouver, CB
Provenance: Phillips Farevaag Smallenberg
13. Casse-croûte
Ottawa, (Ontario)
Provenance: KPMB Architects
14. Collège Fruit and Flower
Toronto, (Ontario)
Provenance: KPMB Architects
15. The Urban Cyclist
Toronto, (Ontario)
Provenance: KPMB Architects
16. Housing
Malmo, Suède
Photographe: Mark Brumbaugh, Brumbaugh & Associates
Provenance: http://www.i-sustain.com/photoGallery/Scandinavia/Malm%F6/Western%20Harbor/slides/110_1050.htm
17. Usine de montres Cartier
Villeret, Suisse
Architecte: Jean Nouvel
Provenance: Adam, Jurgen, Katharina Hausmann & Frank Jutner. *Industrial Buildings- A Design Manual*. Bâle: Birkhauser, 2004.
- 1.19 AMENAGEMENT DURABLE**
1. Ambassade canadienne à Berlin
Berlin, Allemagne
Architecte: KPMB Architects
Provenance: KPMB Architects
2. Jackson Triggs Winery
Niagara-on-the-Lake, (Ontario)
Architecte: KPMB Architects
Photographe: Tom Arban Photography
3. Logement Waterwijk
Le Haye, Netherlands
Architecte: MVRDV
Provenance: MVRDV. "Patio Island, Hagen Island and Water Villas." *The Plan: Architecture and Technologies in Detail No. 013*, mars/avril 2006.
4. L'Aquapoint
Malmo, Suède
Photographe: Mark Brumbaugh, Brumbaugh & Associates
Provenance: <http://www.i-sustain.com/photoGallery/Scandinavia/Malm%F6/Western%20Harbor/slides/The%20aquapoint.htm>
5. Logement
Freiburg, Allemagne
Photographe: Jayson Antonoff, International Sustainable Solutions
Provenance: <http://www.i-sustain.com/photoGallery/Germany/Freiburg/slides/DSCN1621.htm>
6. Toits verts
Freiburg, Allemagne
Photographe: Jayson Antonoff, International Sustainable Solutions
Provenance: <http://www.i-sustain.com/photoGallery/Germany/Freiburg/slides/DSCN1596.htm>
7. Gestion des eaux pluviales
Provenance: Ryker, Lori. *Off the Grid: Modern Homes and Alternative Energy*. Utah: Gibbs Smith, 2005.
8. Ghost VI
Kingsburg, (Nouvelle-Ecosse)
Architecte: Brian Mackay-Lyons
Provenance: Quattrill, Malcolm. *Plain Modern: The Architecture of Brian Mackay-Lyons*. New York: Princeton Architectural Press, 2005.
9. Résidence Barsotti
Laytonville, Californie
Architecte: Arkin/ Tilt Architects
Provenance: Ryker, Lori. *Off the Grid: Modern Homes and Alternative Energy*. Utah: Gibbs Smith, 2005.
- 1.20 DOMAINE PUBLIC**
1. UC San Diego, Library Walk
San Diego, Californie
Architecte paysager: Peter Walker and Partners Landscape Architects
Provenance: Peter Walker & Partners. *Defining the Craft*. ORO Editions, 2005
2. Dublin Paysage urbain
Dublin, Irlande
Provenance: <http://community.webshots.com/photo/yahoo/550152038/2002807270090165843uukvJ#>
3. Hôtel de ville et marché, Richmond
Richmond, CB
Architecte paysager: Phillips Farevaag Smallenberg
Provenance: Phillips Farevaag Smallenberg
4. Sudstadtspark
Furth, Allemagne
Designer: Werkgemeinschaft Freiraum
Photographe: Werkgemeinschaft FreiraumSource
Provenance: Deutscher, Bund. *Changing Places: Contemporary German Landscape Architecture*. Bâle, Suisse: Birkhauser, 2005.
5. Rue Bank
Ottawa, (Ontario)
Provenance: KPMB Architects
6. Patio extérieur
Oulu, Finland
Provenance: http://www.wogger.com/gallery/garlic_night/aaah
7. Paysage hivernal sur le canal
Ottawa, (Ontario)
Photographe: Paul Von Baich
Provenance: Von Baich, Paul. *Ottawa Stories: Images Through the Season*. Toronto: Bubna-Lennkh Publishing, 1994.
8. Place du théâtre
Rotterdam, Pays Bas
Architecte: West 8
Provenance: Molinari, Luca Ed. *West 8*. Italy: Skira, 2000.
9. Festival du Jazz de Montréal
Montréal, (Québec)
Provenance: <http://sspiegel.blogspot.com/>
10. Leche vitrine
Malmo, Suède
Photographe: Mahlon Clements, ZGF
Provenance: <http://www.i-sustain.com/photoGallery/Scandinavia/Mobility/Bicycling/slides/PICT0174.htm>
- 1.21 TOPOGRAPHIE DU SITE**
1. Site de Rockcliffe: Panorama
Ottawa, (Ontario)
Provenance: KPMB Architects
- 1.22 EAUX PLUVIALES**
1. Site de Rockcliffe: vue vers l'est du cours d'eau existant
Ottawa, (Ontario)
Provenance: Phillips Farevaag Smallenberg
- 1.23 EXPLOITATION DU PAYSAGE**
1. Résidence Fargo et Maestas
Olyde Park, Montana
Landscape Architect: Frederick Law Olmsted
Provenance: Phillips Farevaag Smallenberg
2. Paysage urbain
Horseshoe Bay, CB
Provenance: Phillips Farevaag Smallenberg
- 1.24 DESTINATIONS REGIONALES**
1. National Botanical Gardens of Wales
Pays de Galles, RU
Architecte: Foster and Partners
Provenance: Adam, Jurgen, Katharina Hausmann & Frank Jutner. *Industrial Buildings- A Design Manual*. Bâle: Birkhauser, 2004.
2. Hôtel de ville, Richmond
Richmond, CB
Architecte: KPMB Architects
Photographe: Peter Aaron/ESTO
3. Reichstag
Berlin, Allemagne
Architecte: Foster and Partners
Provenance: Schulz, Bernhard. *The Reichstag: The Parliament Building by Norman Foster*. Prestel Verlag, 2000.
4. Eden Project Greenhouse
Cornwall, RU
Architecte: Nicholas Grimshaw
Provenance: Adam, Jurgen, Katharina Hausmann & Frank Jutner. *Industrial Buildings- A Design Manual*. Bâle: Birkhauser, 2004.
5. Ambassade canadienne à Berlin
Berlin, Allemagne
Architecte: KPMB Architects
Photographe: Ben Rahn/Aframe
6. Biosphere
Montréal, (Québec)
Architecte: Buckminster Fuller
Photographe: Michael Peiffer
Provenance: http://www.trekearth.com/gallery/North_America/Canada/photo1022.htm
7. Musée des enfants
Pittsburg, Pennsylvanie
Architecte: Koning Eizenberg Architecture, Perkins Eastman
Photographe: Albert Vacek
Provenance: <http://www.pittsburghkids.org/SmoothCMS/Content/Objects/2A8CB150-6401-4E0E-B5CC-B82A868CC0A6.pdf>
- 1.25 UNE COMMUNAUTE PROPICE A LA MARCHÉ**
1. Central Park
Manhattan, NY
Landscape Architect: Frederick Law Olmsted
Provenance: Phillips Farevaag Smallenberg
2. Paysage urbain
Horseshoe Bay, CB
Provenance: Phillips Farevaag Smallenberg
- 1.26 AMENAGEMENT NOVATEUR**
1. Parc André Citroën
Paris, France
Architecte: Patrick Berger, Gilles Clement, J.P. Viguier & J.F. Jodry
Alain Provost
Provenance: Bédarida, Marc. "Tradition française et paradigme écologique" Lotus International 87, novembre 1995.
- 1.27 CREDITS PHOTO**
- Ottawa, (Ontario)
Provenance: Ottawa. Vancouver/Toronto: Prospero Books, 1997.
- 1.28 CREDITS PHOTO**
- Ottawa, (Ontario)
Provenance: Ottawa. Vancouver/Toronto: Prospero Books, 1997.
- 1.29 CREDITS PHOTO**
- Richmond, CB
Architecte: KPMB Architects
Photographe: Tom Arban Photography
- Stratford Gardens
Stratford, (Ontario)
Architecte: KPMB Architects
Photographe: Michael Awad
- Vergers
Allemagne
Provenance: KPMB Architects

