

# GLOCKENSPIEL / LYRE

NIVEAU II / LEVEL II

**GAMME CHROMATIQUE**  
**MÉMORISATION NON NÉCESSAIRE**

**CHROMATIC SCALE**  
**MEMORIZATION NOT REQUIRED**

## Do Chromatique / C Chromatic

♩ = 72



# GLOCKENSPIEL / LYRE

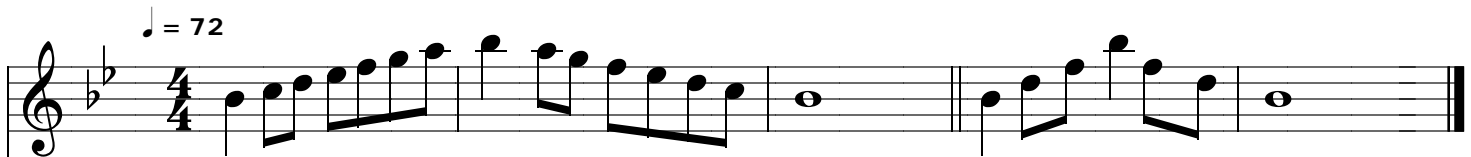
NIVEAU II / LEVEL II

GAMMES ET ARPÈGES MAJEURS  
MÉ MORISATION NON NÉCESSAIRE

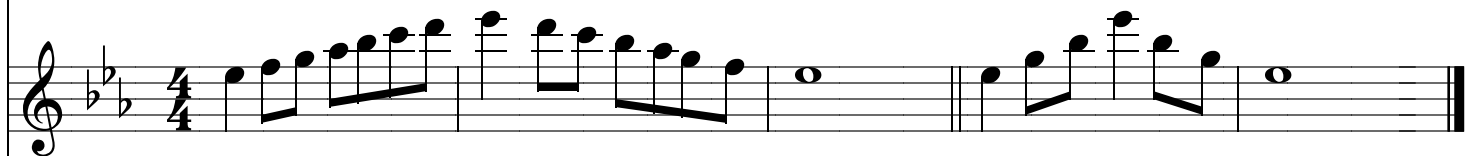
MAJOR SCALES AND ARPEGGIOS  
MEMORIZATION NOT REQUIRED

Sib Majeur / Bb Major

♩ = 72



Mib Majeur / Eb Major



Lab Majeur / Ab Major



# GLOCKENSPIEL / LYRE

NIVEAU II / LEVEL II

GAMMES ET ARPÈGES MAJEURS  
MÉ MORISATION NON NÉCESSAIRE

MAJOR SCALES AND ARPEGGIOS  
MEMORIZATION NOT REQUIRED

Fa Majeur / F Major

♩ = 72

The musical notation for the F Major scale and arpeggio is written on a single staff in 4/4 time. The key signature has one flat (Bb). The scale is played in two directions: ascending and descending. The arpeggio is played in two directions: ascending and descending. The tempo is marked as quarter note = 72.

Do Majeur / C Major

The musical notation for the C Major scale and arpeggio is written on a single staff in 4/4 time. The key signature has no flats or sharps. The scale is played in two directions: ascending and descending. The arpeggio is played in two directions: ascending and descending.

# GLOCKENSPIEL / LYRE

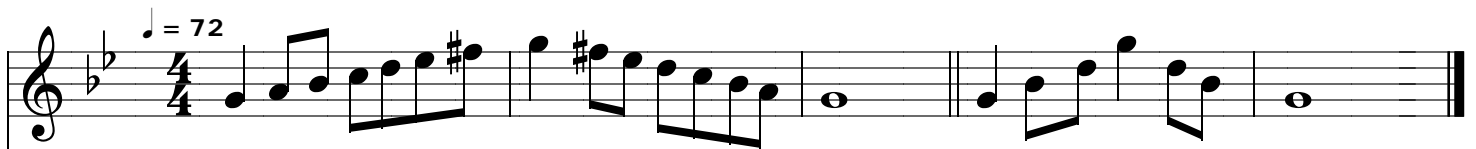
NIVEAU II / LEVEL II

GAMMES ET ARPÈGES MINEURS  
MÉ MORISATION NON NÉCESSAIRE

MINOR SCALES AND ARPEGGIOS  
MEMORIZATION NOT REQUIRED

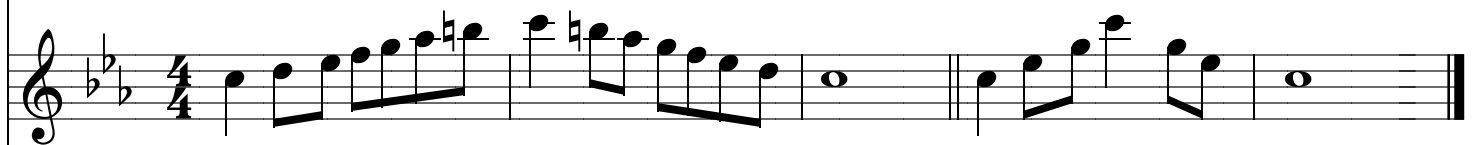
Sol mineur / G minor

Harmonique / Harmonic



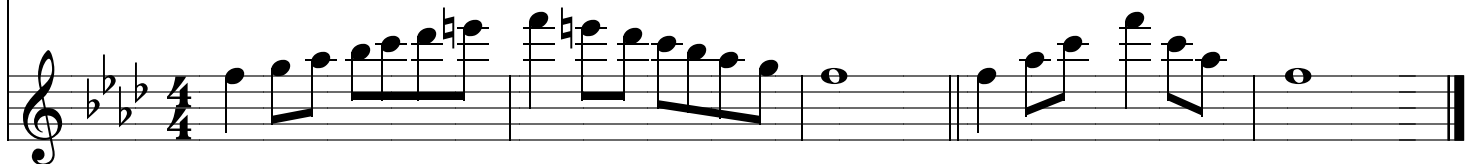
Do mineur / C minor

Harmonique / Harmonic



Fa mineur / F minor

Harmonique / Harmonic



# GLOCKENSPIEL / LYRE

NIVEAU II / LEVEL II

GAMMES ET ARPÈGES MINEURS  
MÉ MORISATION NON NÉCESSAIRE

MINOR SCALES AND ARPEGGIOS  
MEMORIZATION NOT REQUIRED

## Ré mineur / D minor

Harmonique / Harmonic

$\text{♩} = 72$

## La mineur / A minor

Harmonique / Harmonic