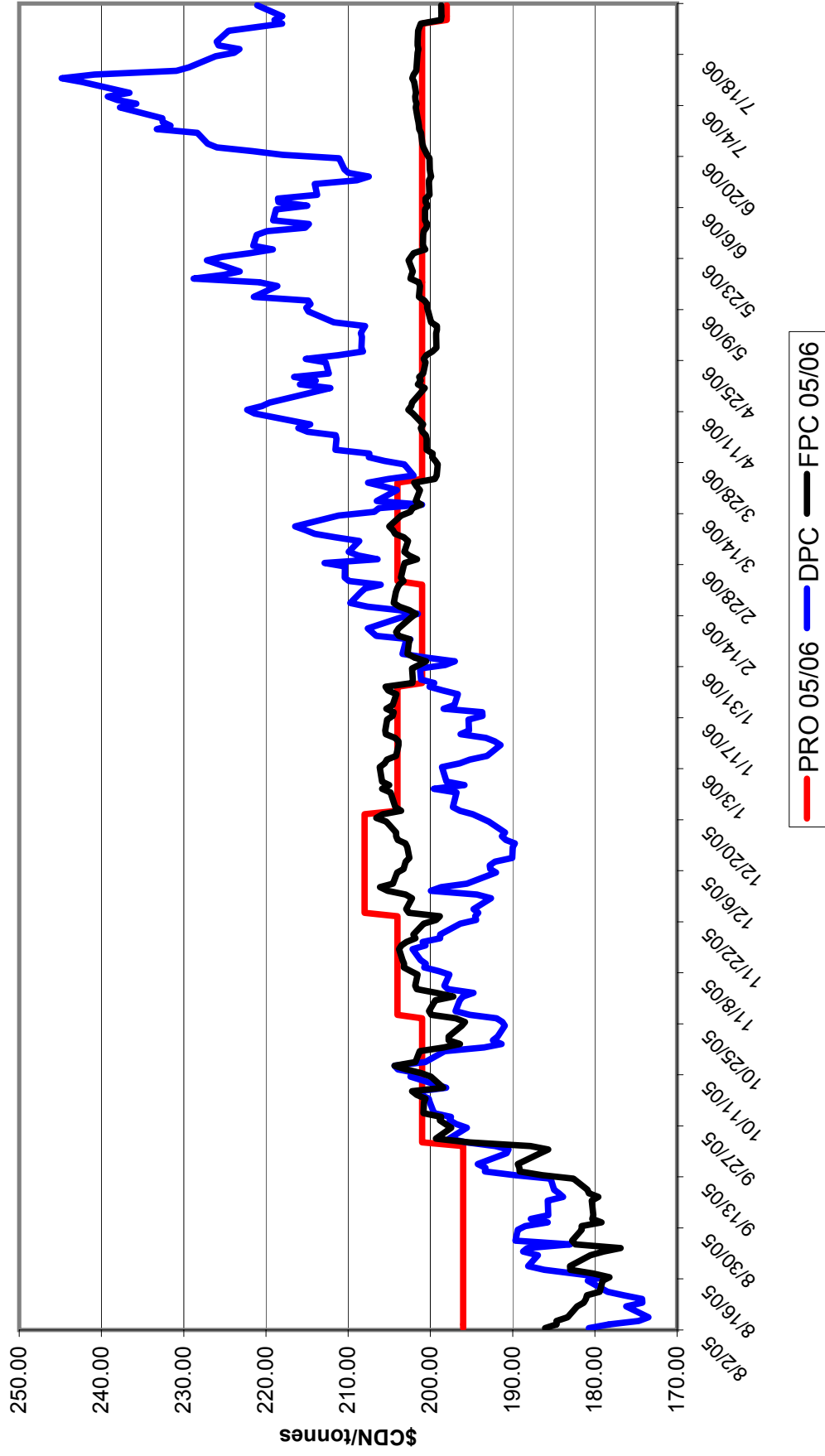
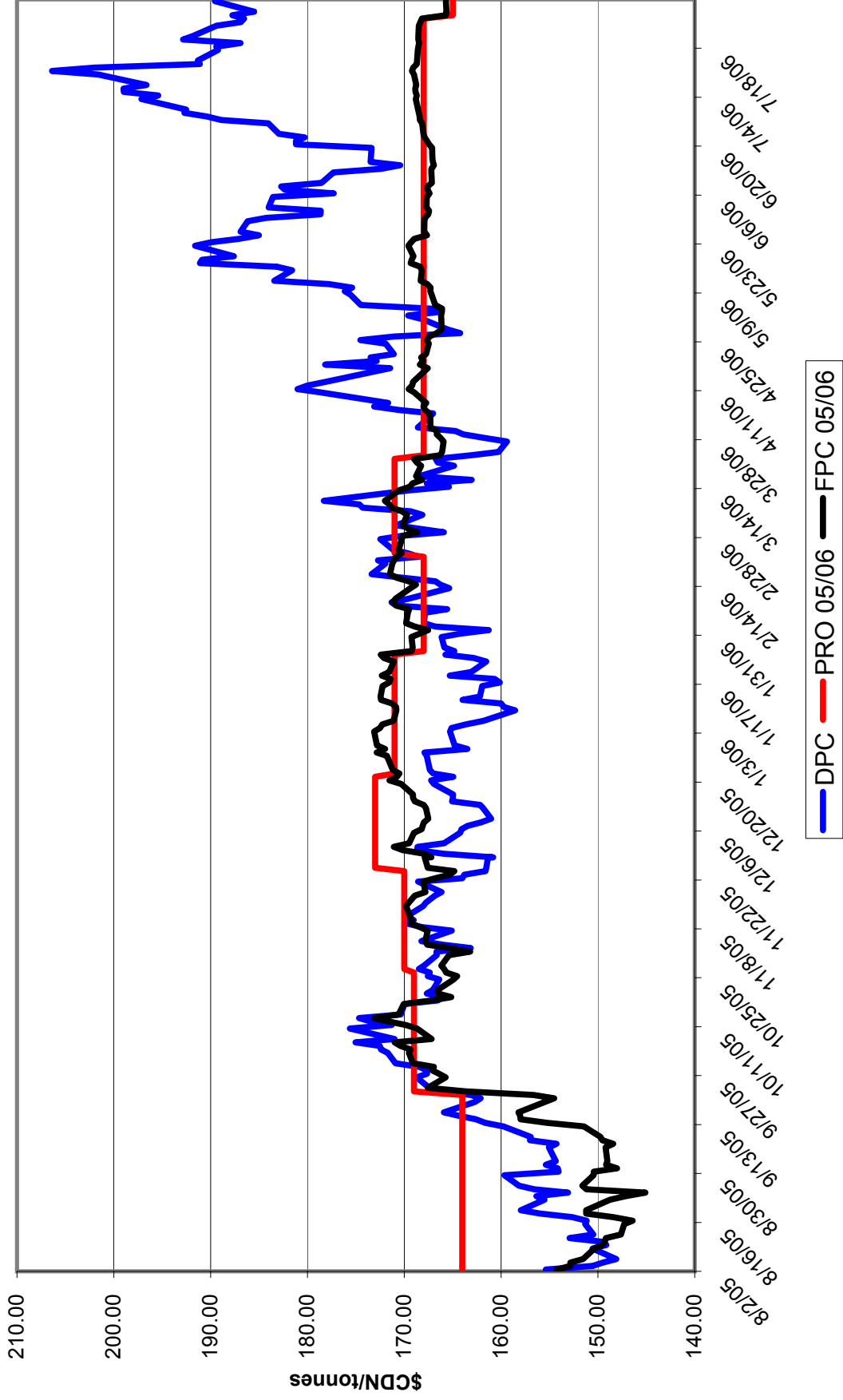


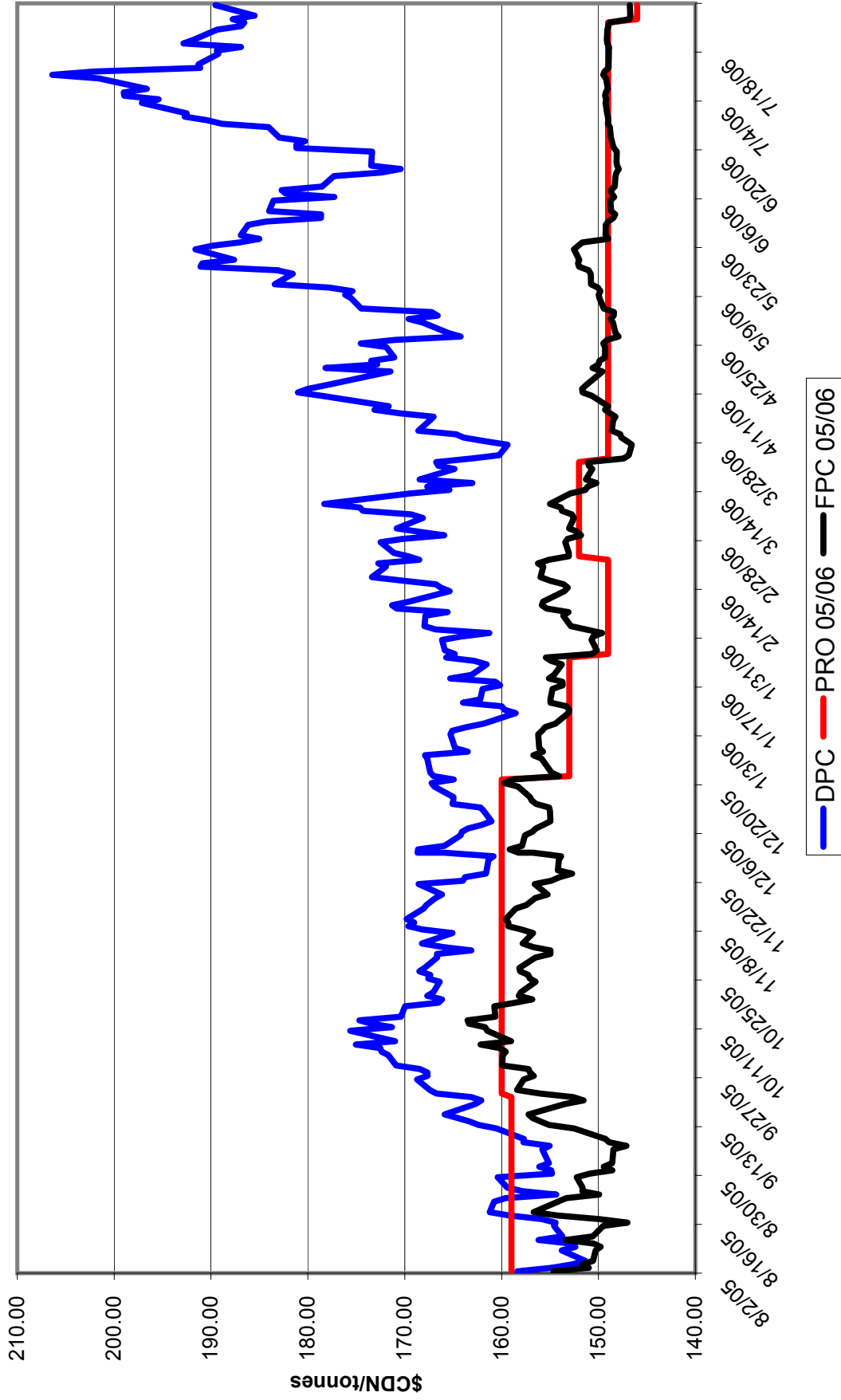
# No. 1 CWRS 13.5 & No. 1 CWHWS 13.5 Daily Comparison of PRO, FPC & DPC values for 2005-06 crop year



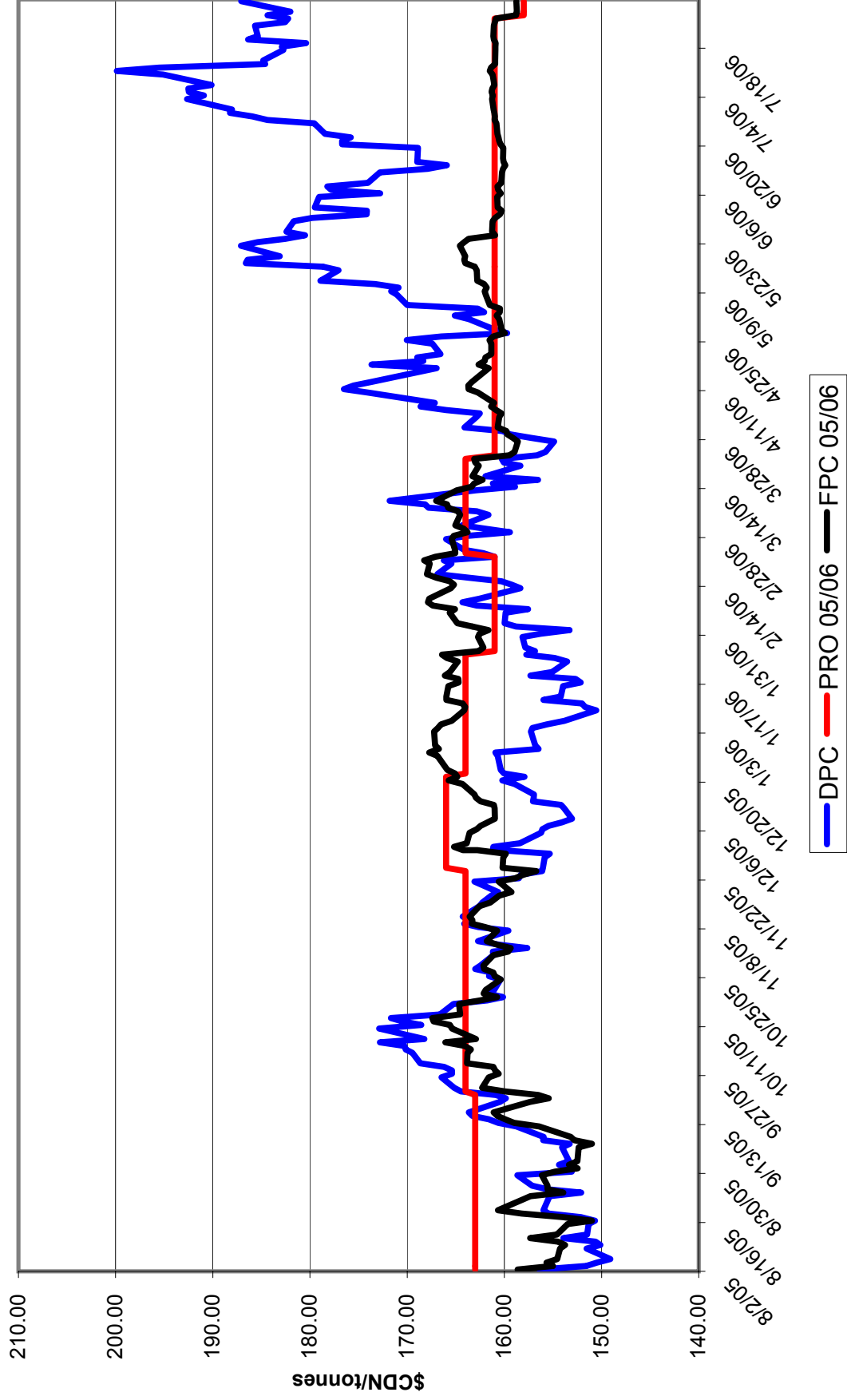
# No. 1 CWES Daily Comparison of PRO, FPC & DPC values for 2005-06 crop year



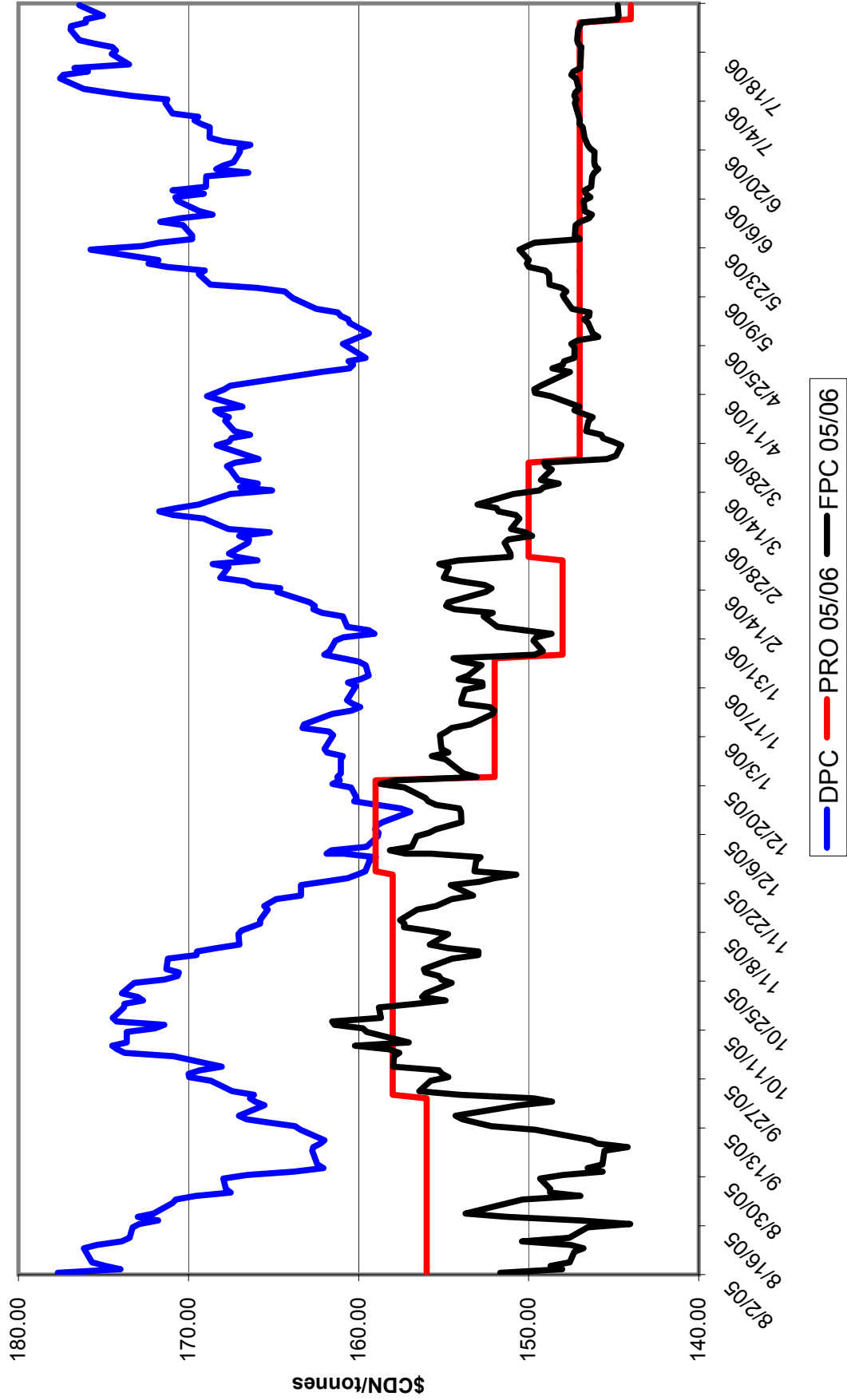
# No. 1 CPSR Daily Comparison of PRO, FPC & DPC values for 2005-06 crop year



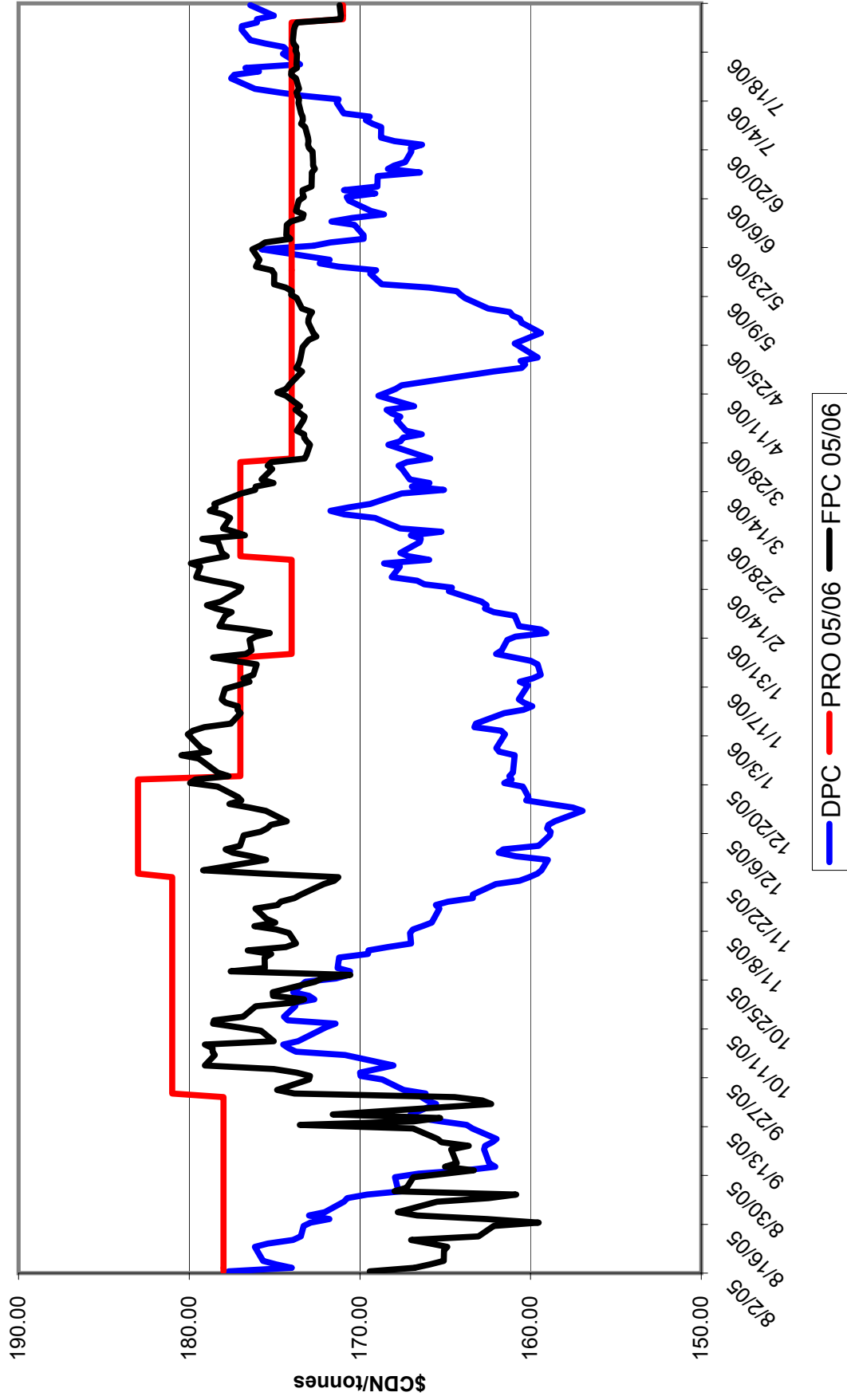
# No. 1 CPSW Daily Comparison of PRO, FPC & DPC values for 2005-06 crop year



# No. 1 CWRW Daily Comparison of PRO, FPC & DPC values for 2005-06 crop year

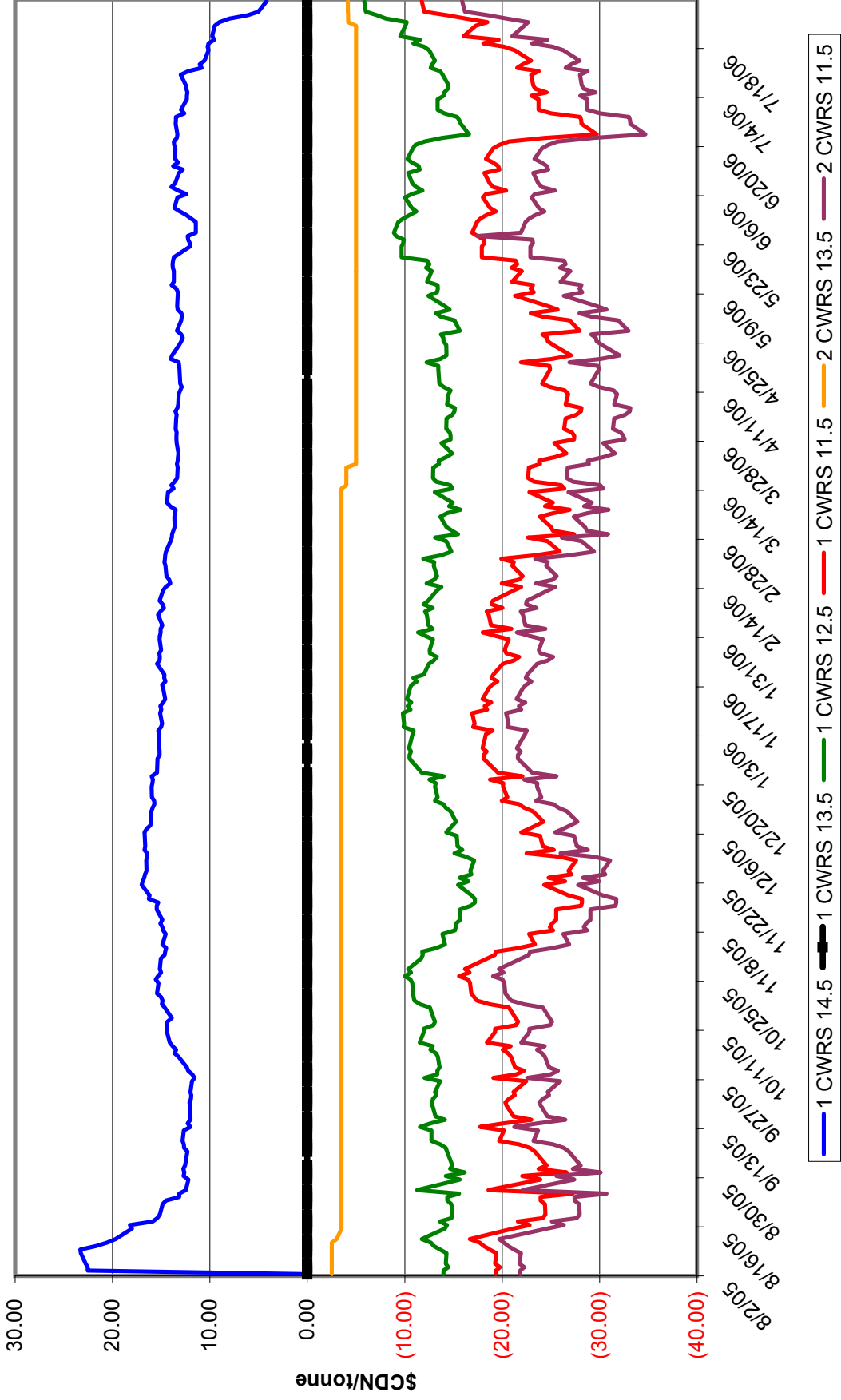


# No. 1 CWSWS Daily Comparison of PRO, FPC & DPC values for 2005-06 crop year



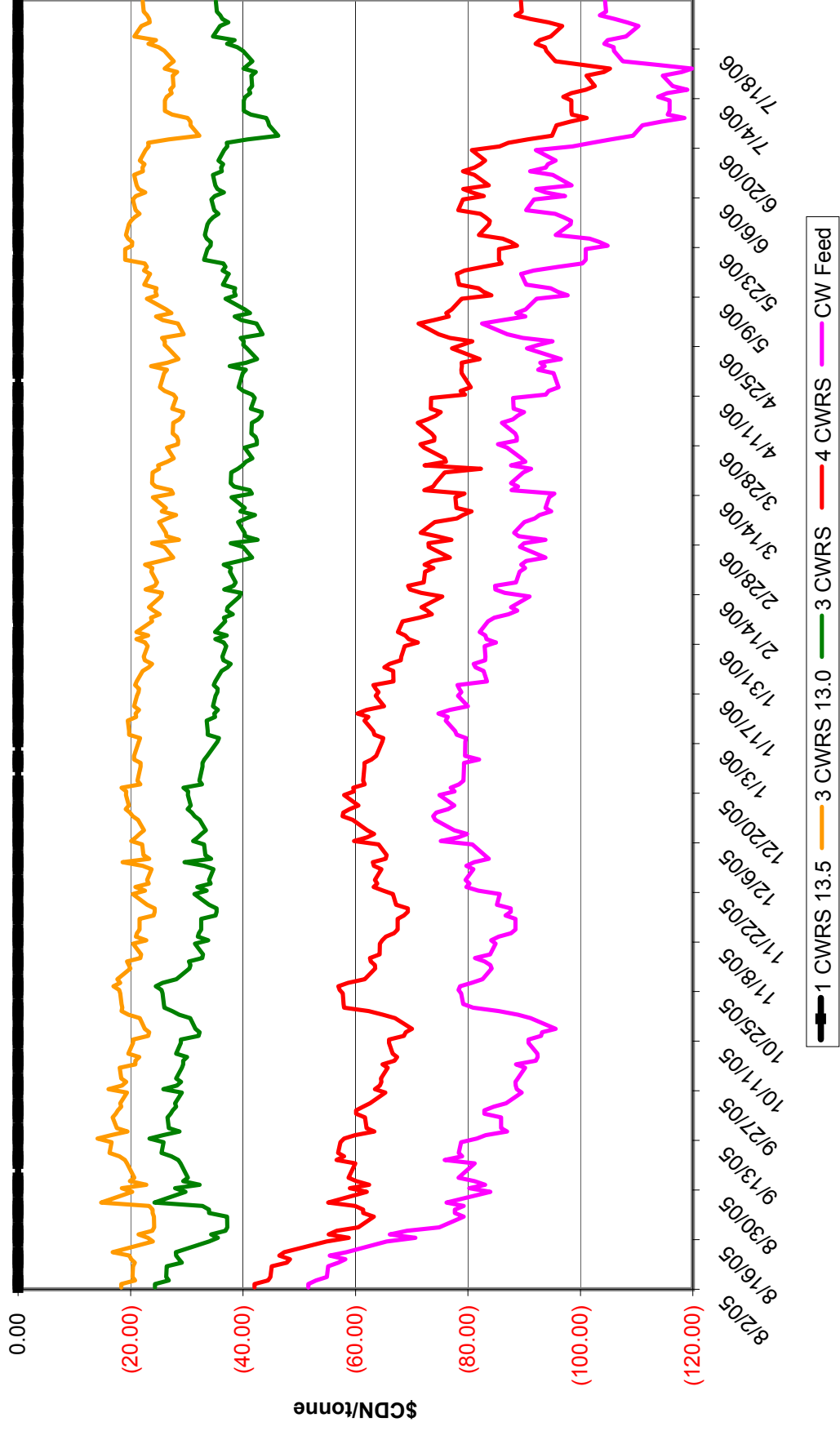
# 2005/06 DPC Spreads - CWRS No. 1 & No. 2

(reference/base grade of No. 1 CWRS 13.5%)



# 2005/06 DPC Spreads - CWRS No. 3, No. 4 & CW Feed

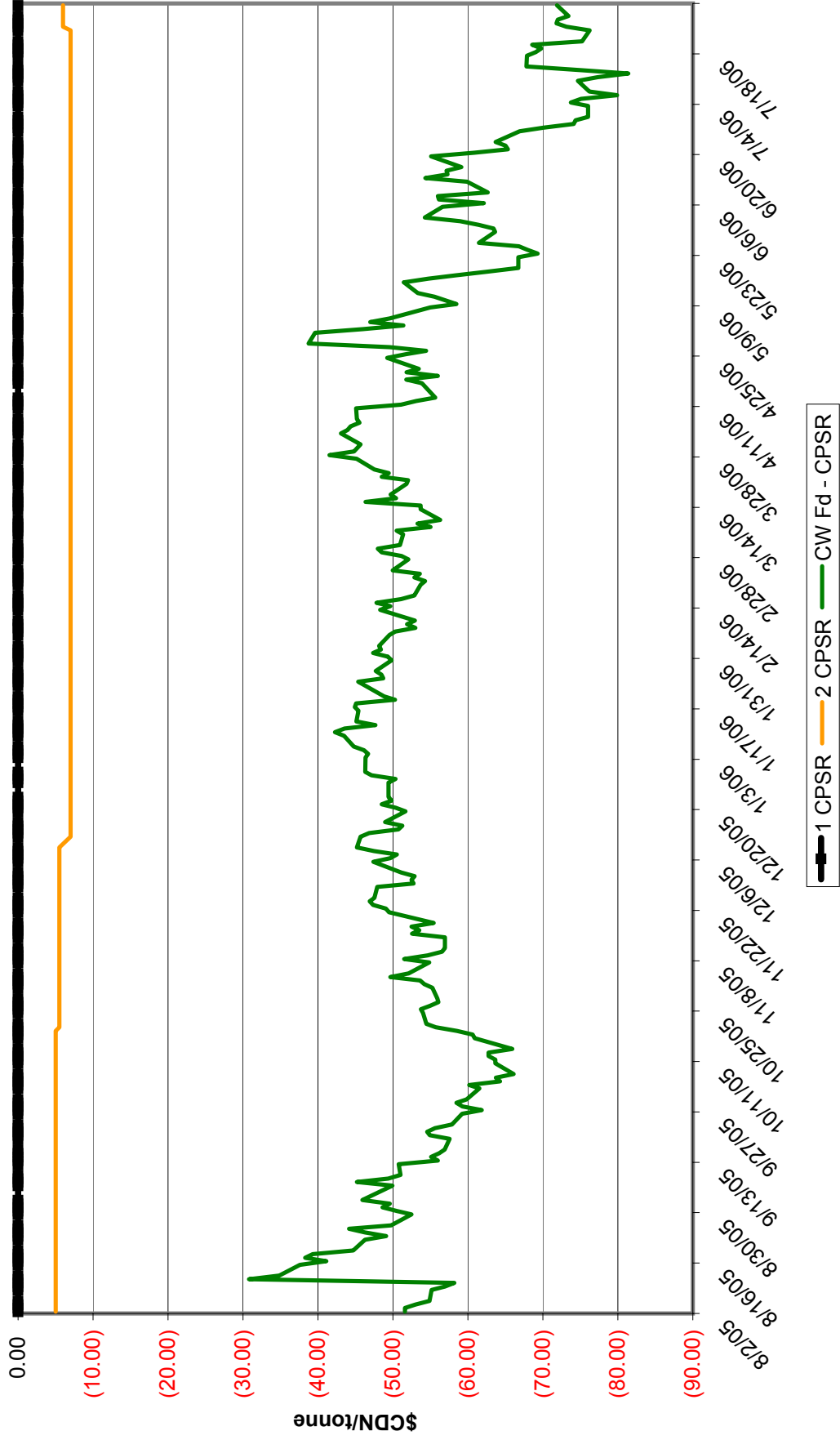
(reference/base grade of No. 1 CWRS 13.5%)





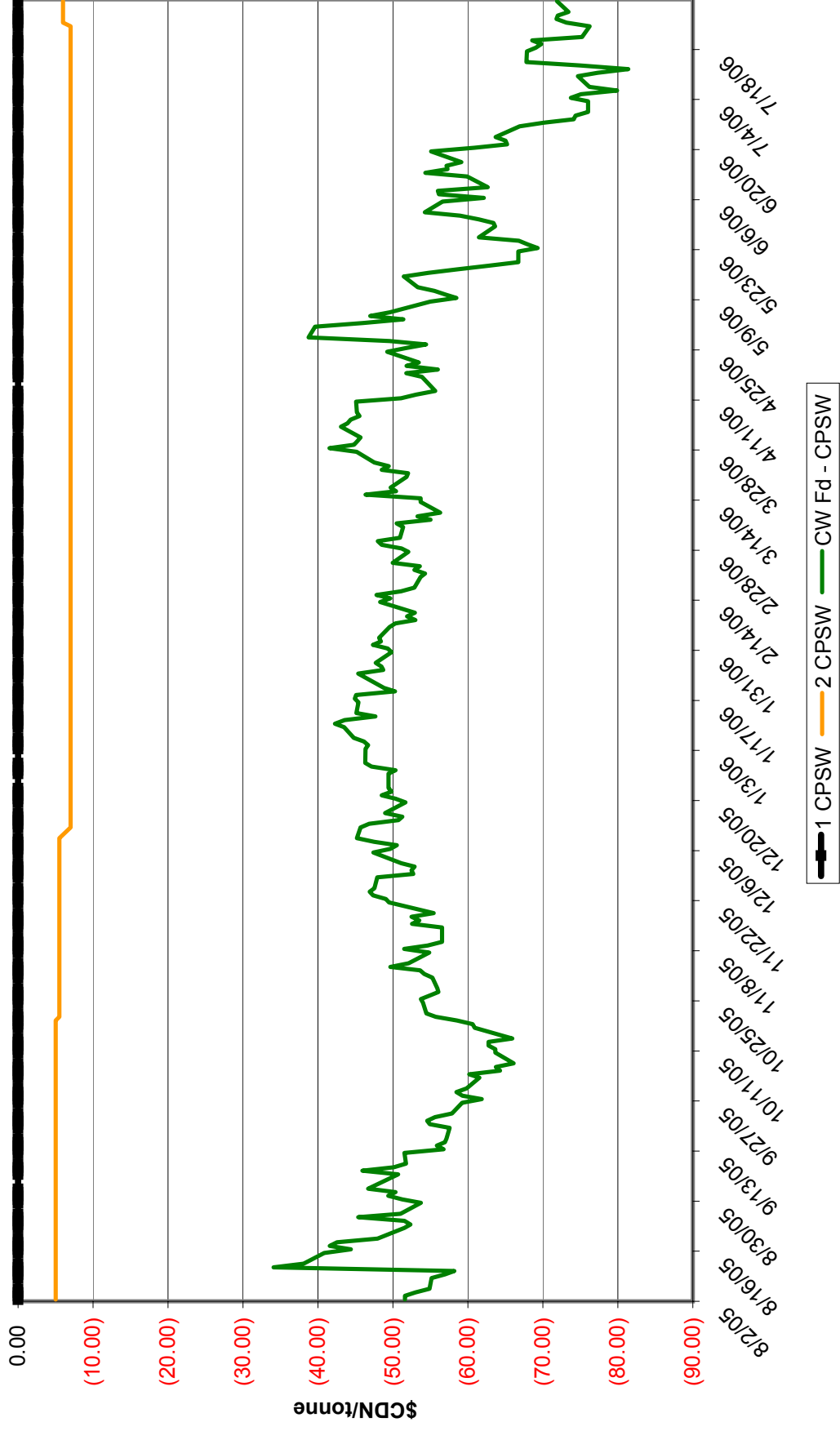
# 2005/06 DPC Spreads - CPSR No. 2 & Feed

(reference/base grade of No. 1 CPSR)



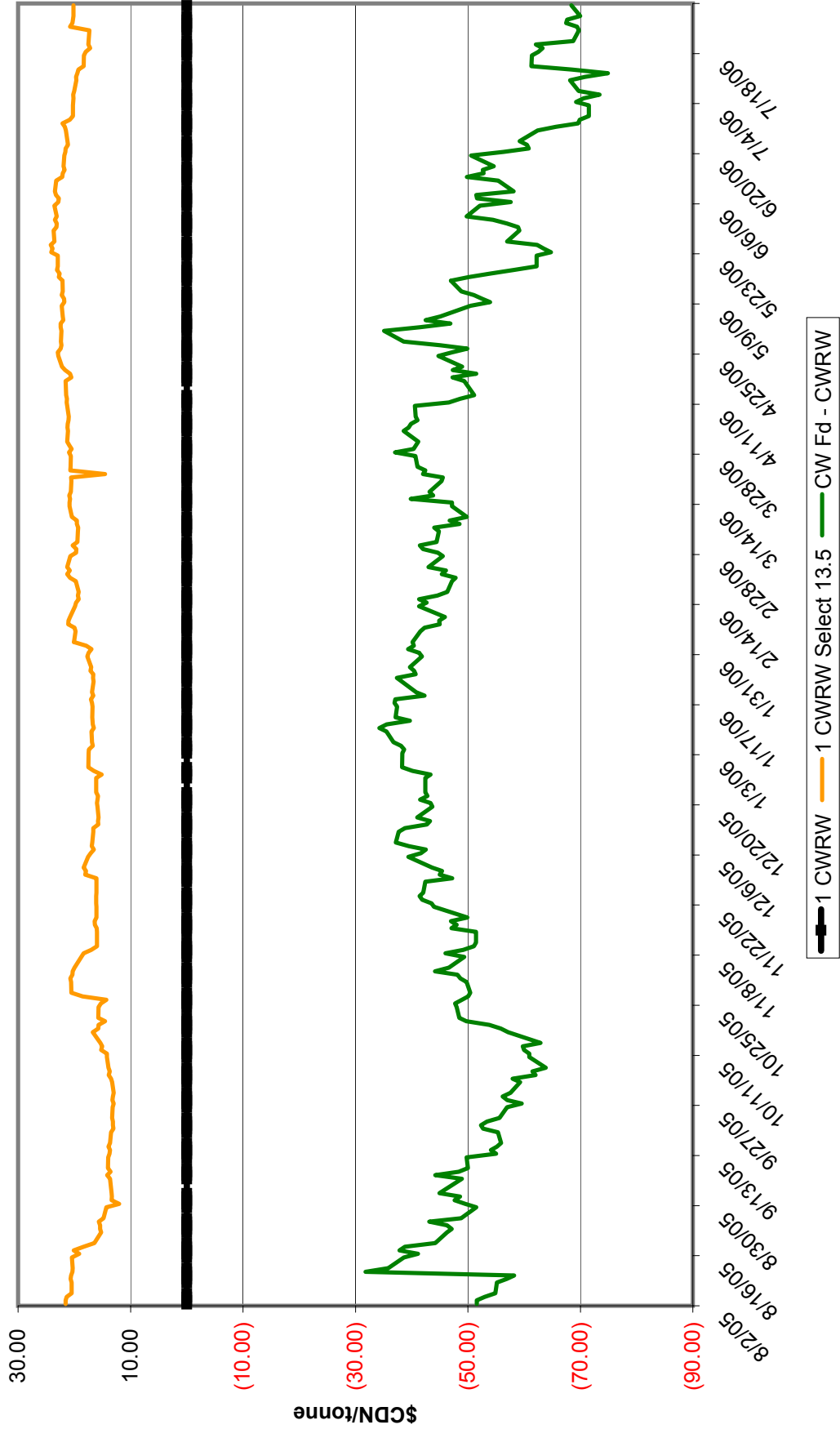
# 2005/06 DPC Spreads - CPSW No. 2 & Feed

(reference/base grade of No. 1 CPSW)



# 2005/06 DPC Spreads - CWRW No. 1 13.5% Sel & Feed

(reference/base grade of No. 1 CWRW)



# 2005/06 DPC Spreads - CWSWS No. 2 & No. 3

(reference/base grade of No. 1 CWSWS)

