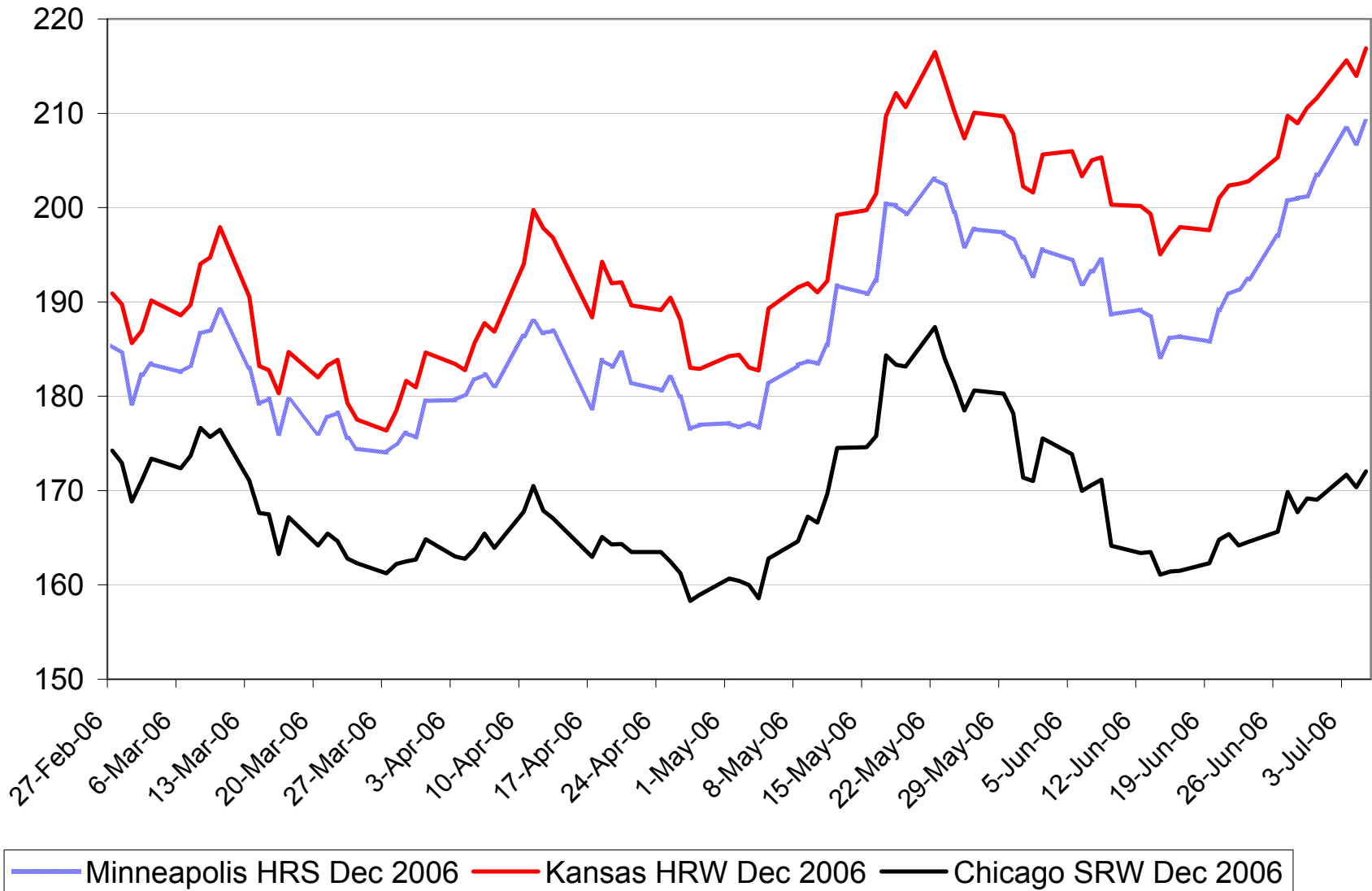


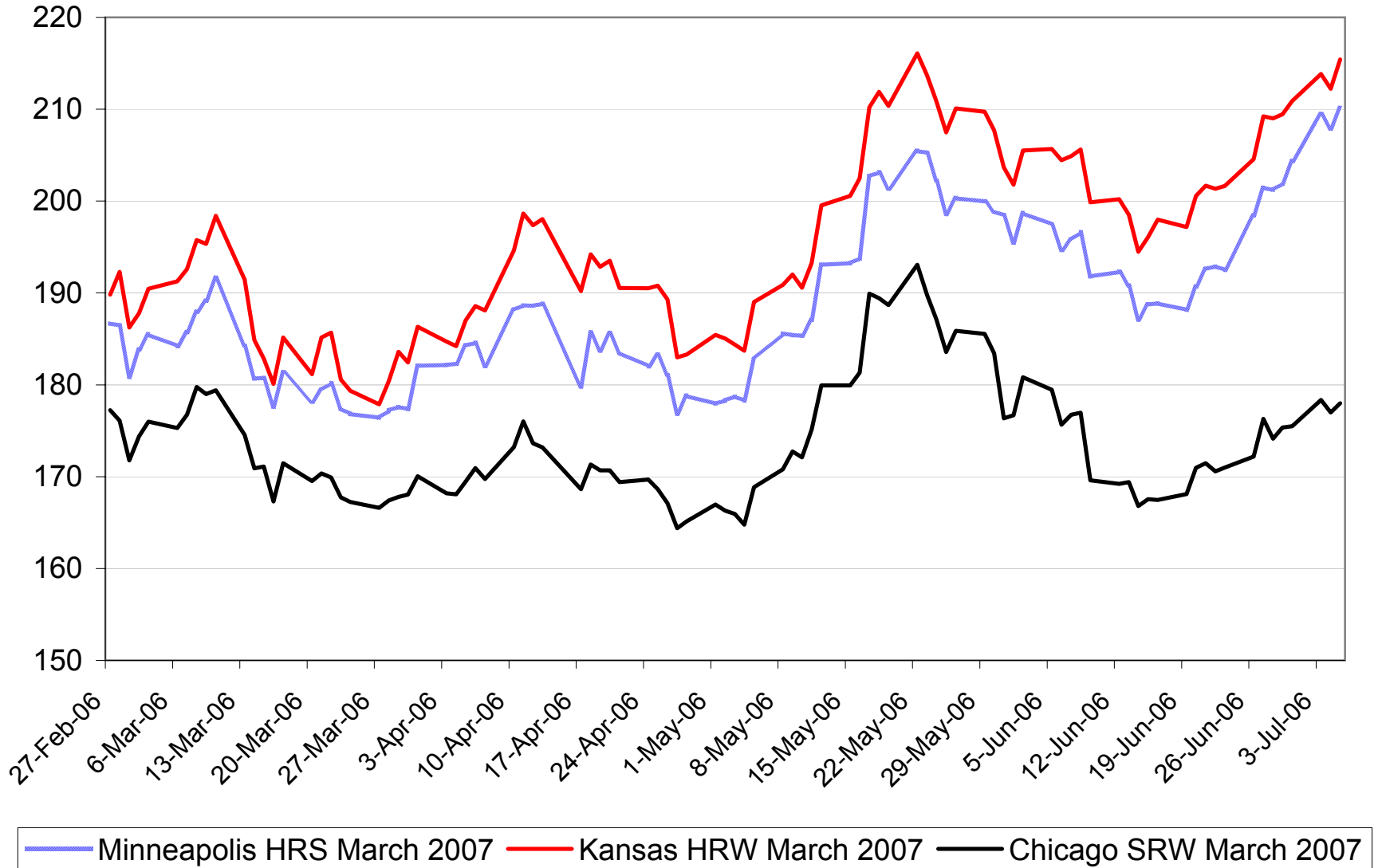
December 2006 Wheat Futures

\$Cdn/tonne



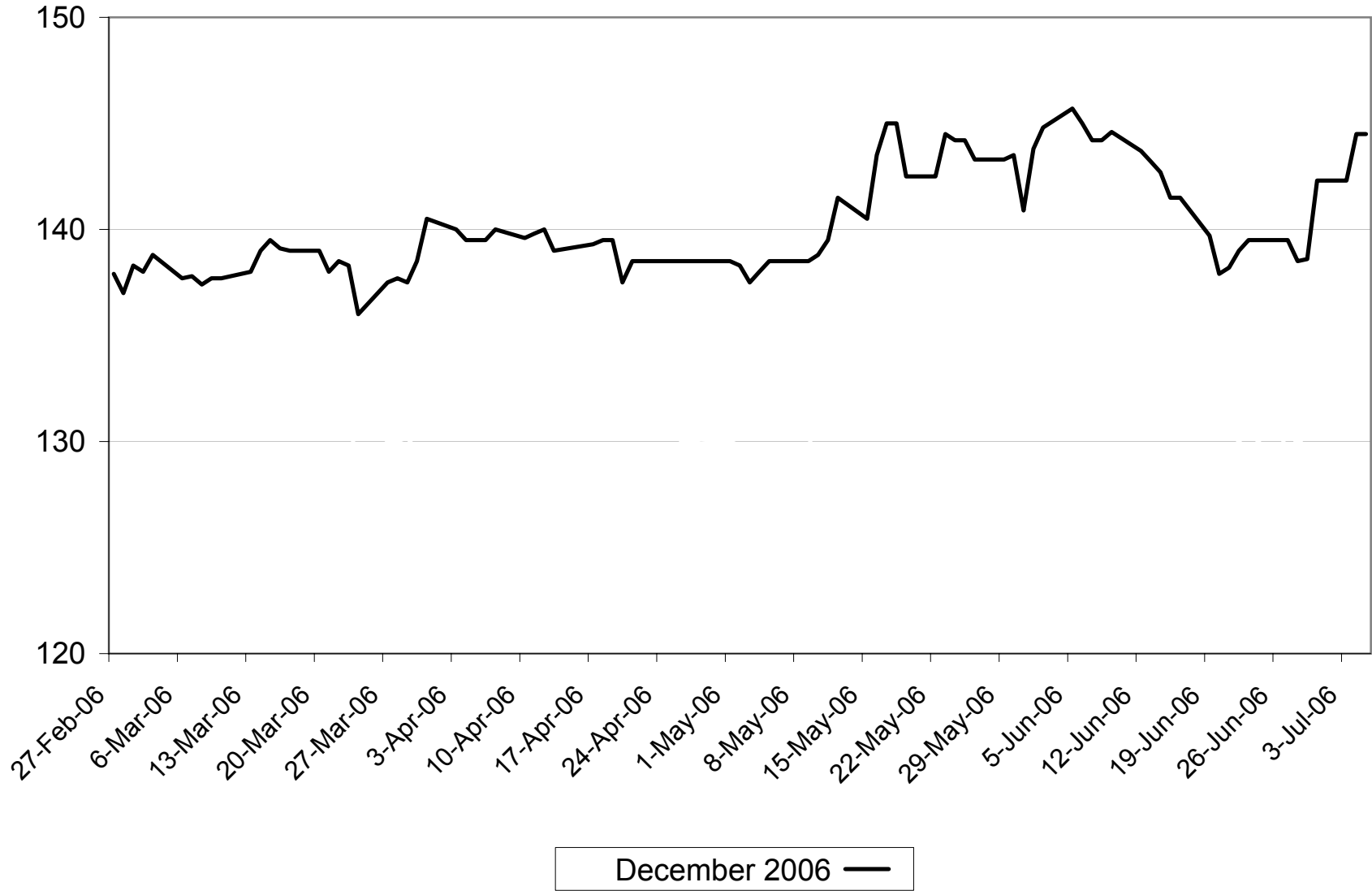
March 2007 Wheat Futures

\$Cdn/tonne



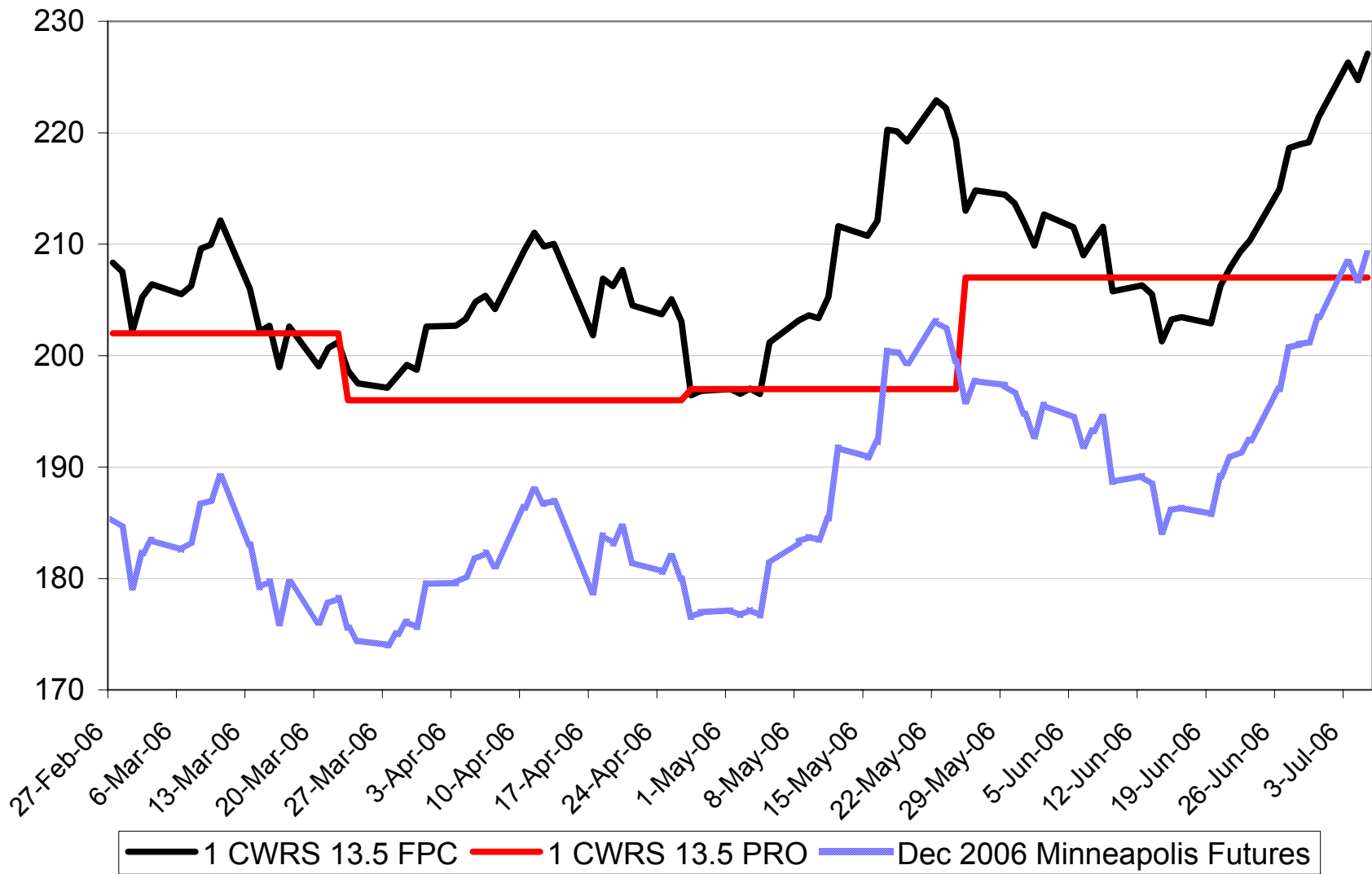
Winnipeg Western Barley Futures

\$Cdn/tonne



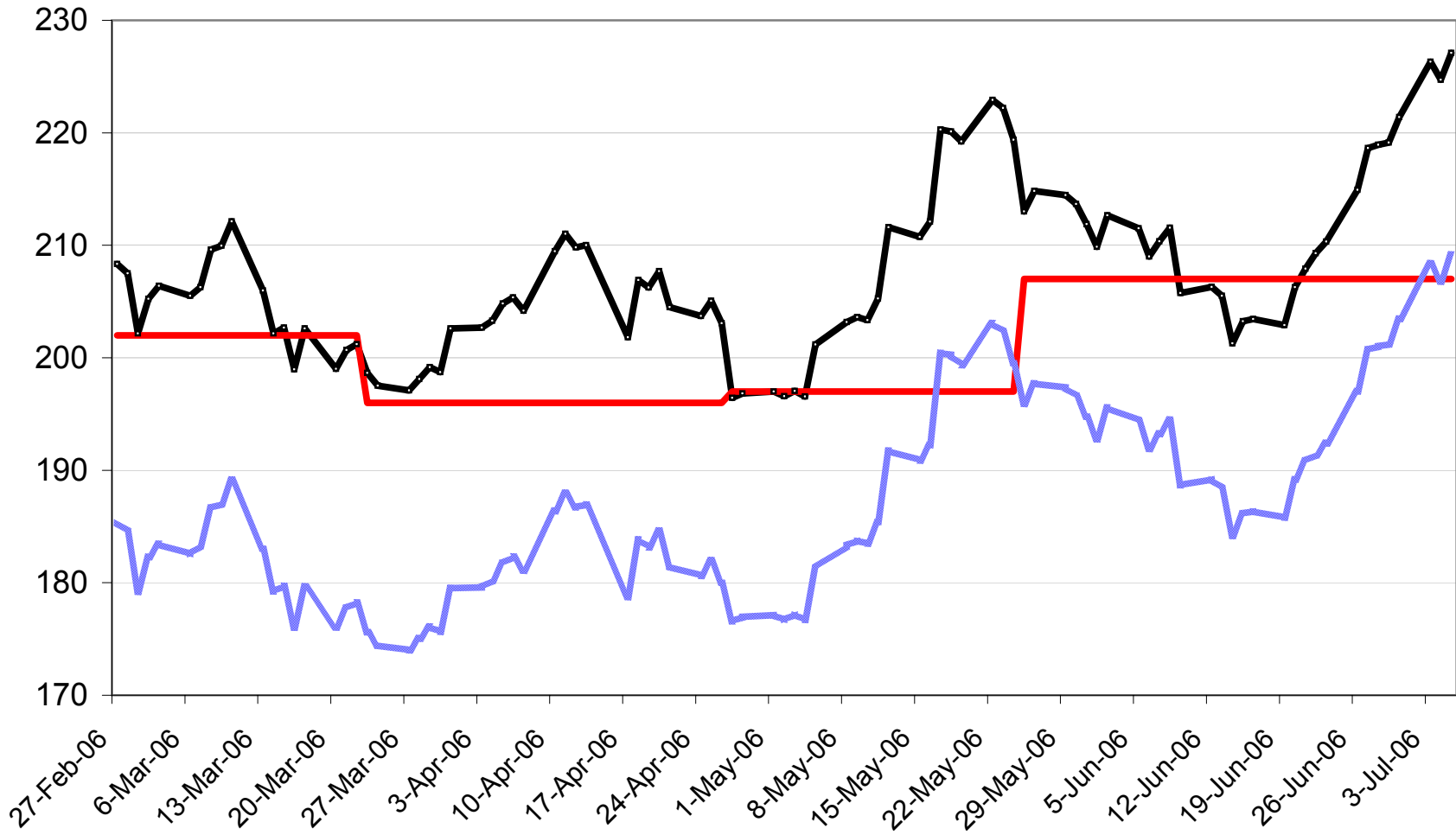
\$Cdn/tonne

2006-07 No.1 CWRS 13.5 Fixed Price



\$Cdn/tonne

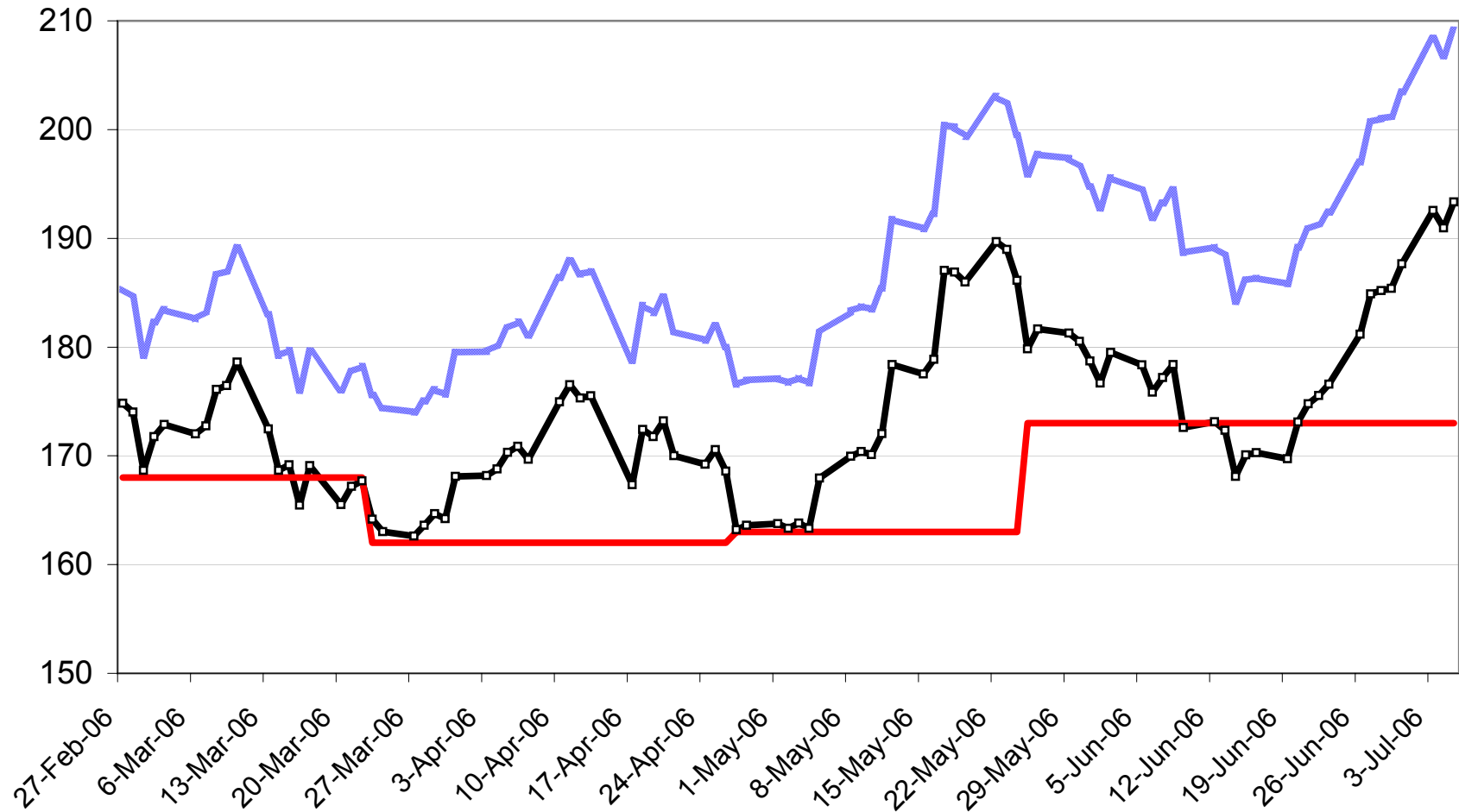
2006-07 No. 1 CWHWS 13.5 Fixed Price



— 1 CWHWS 13.5 FPC — 1 CWHWS 13.5 PRO — Dec 2006 Minneapolis HRS Futures

2006-07 No.1 CWES Fixed Price

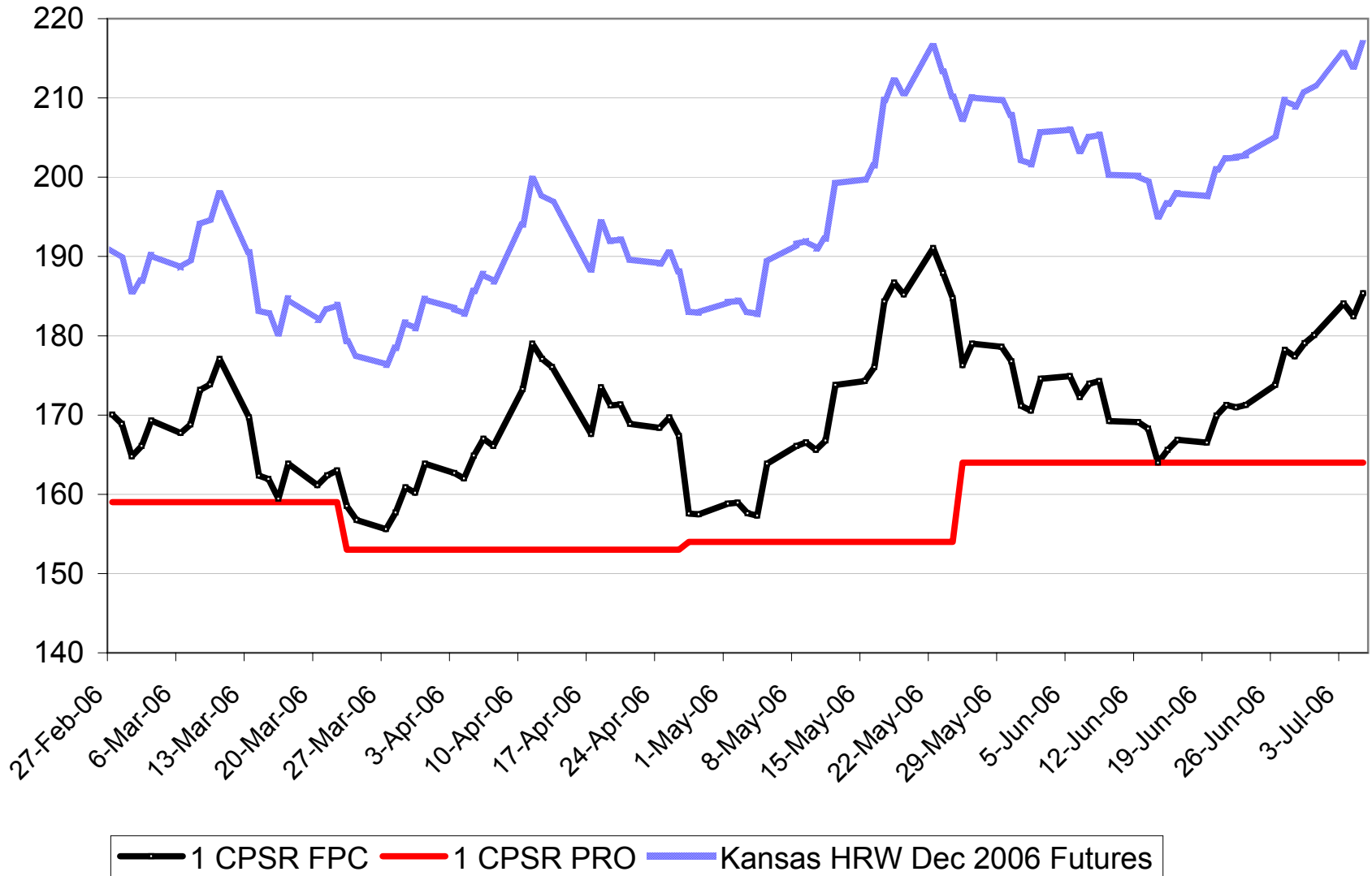
\$Cdn/tonne



—■— 1 CWES Fixed Price — 1 CWES PRO — Dec 2006 Minneapolis HRS Futures

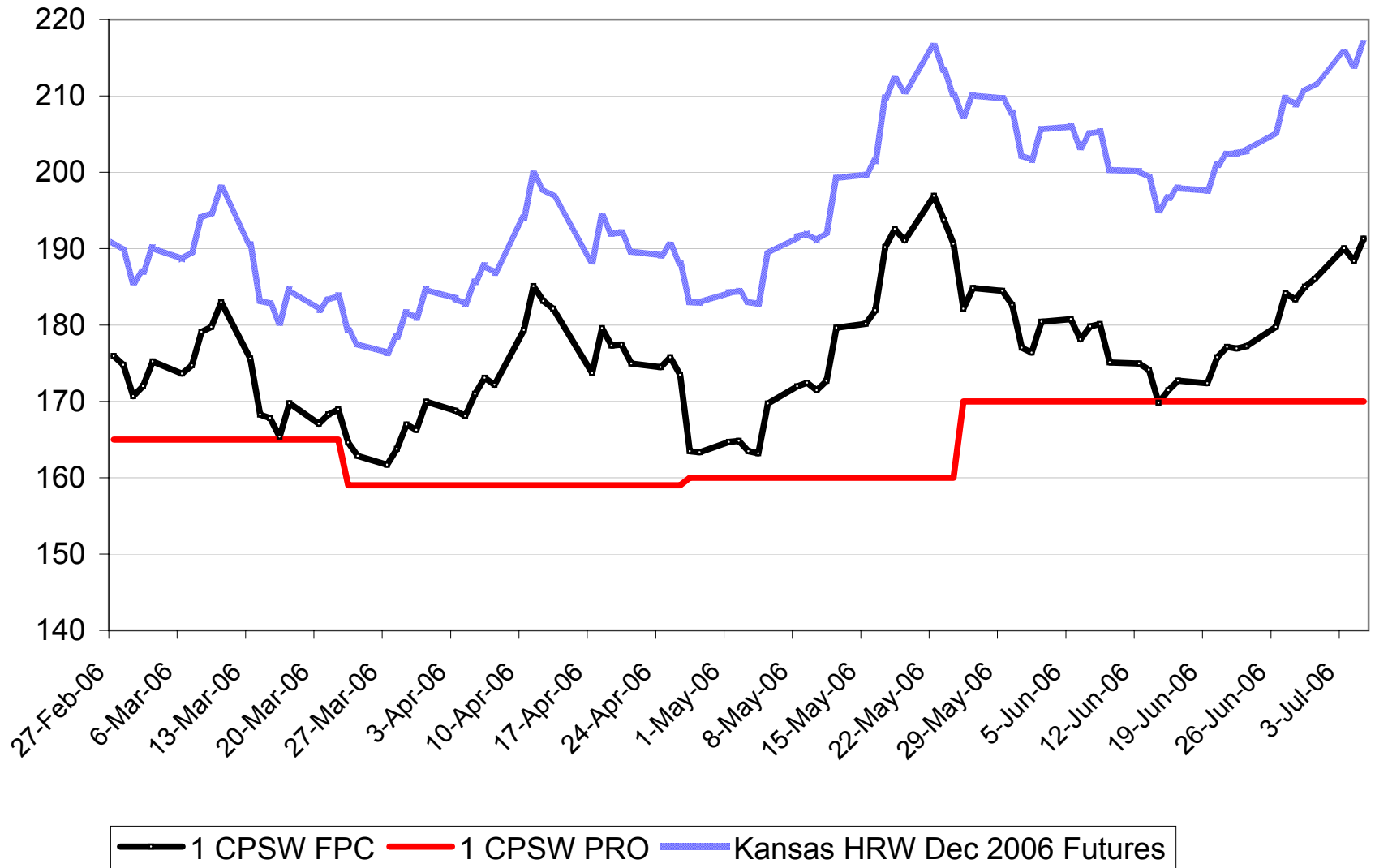
2006-07 No. 1 CPSR Fixed Price

\$Cdn/tonne



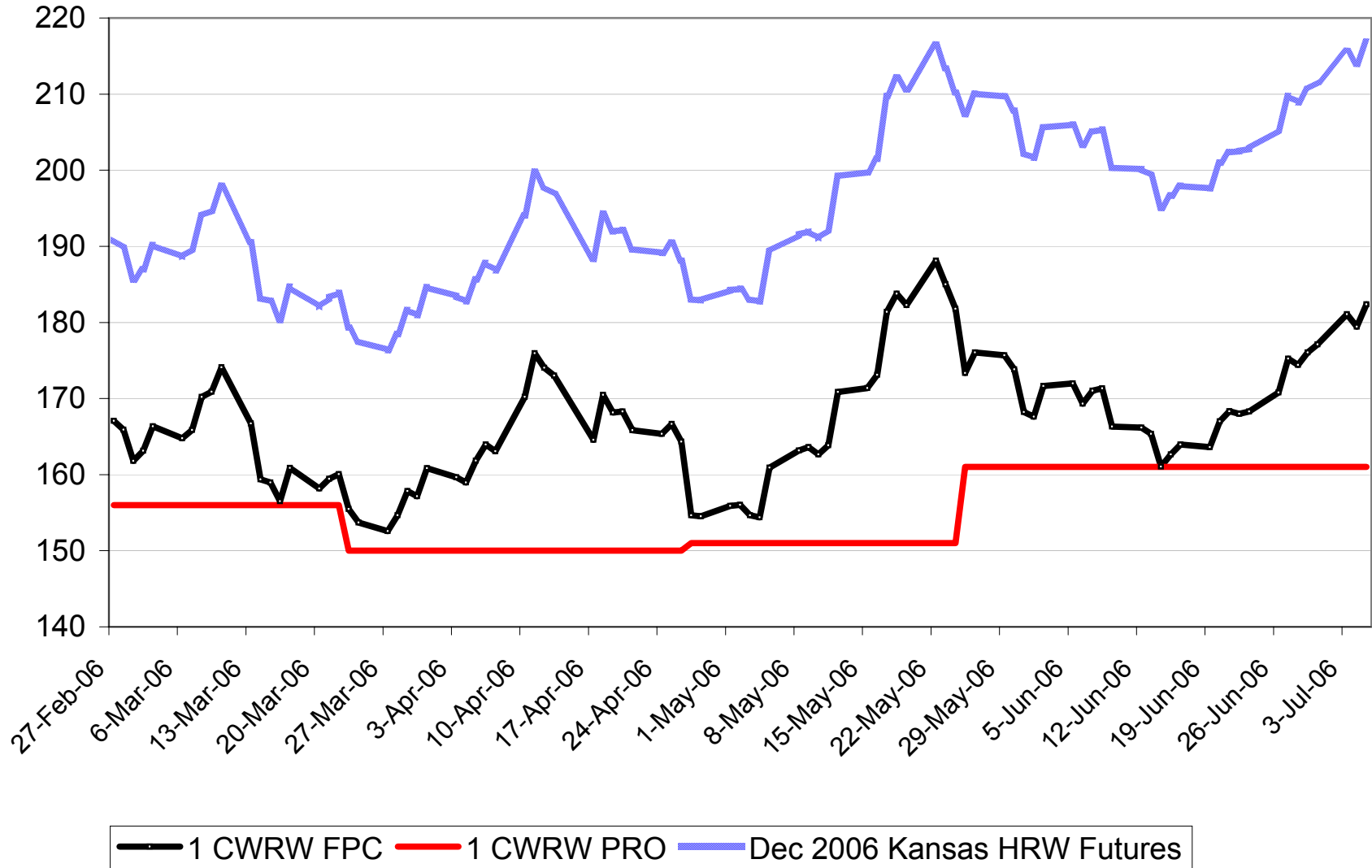
2006-07 No. 1 CPSW Fixed Price

\$Cdn/tonne



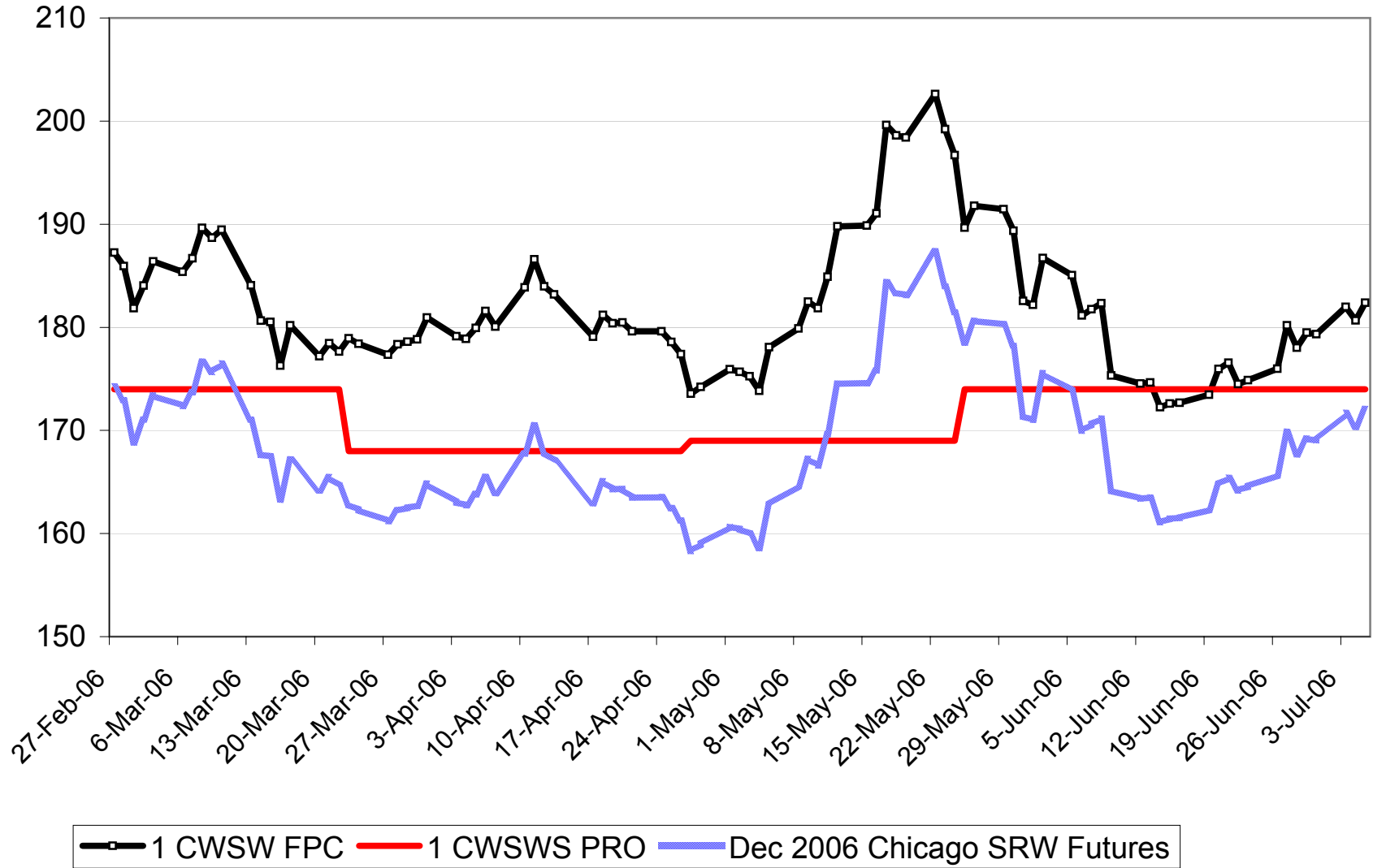
2006-07 No. 1 CWRW Fixed Price

\$Cdn/tonne



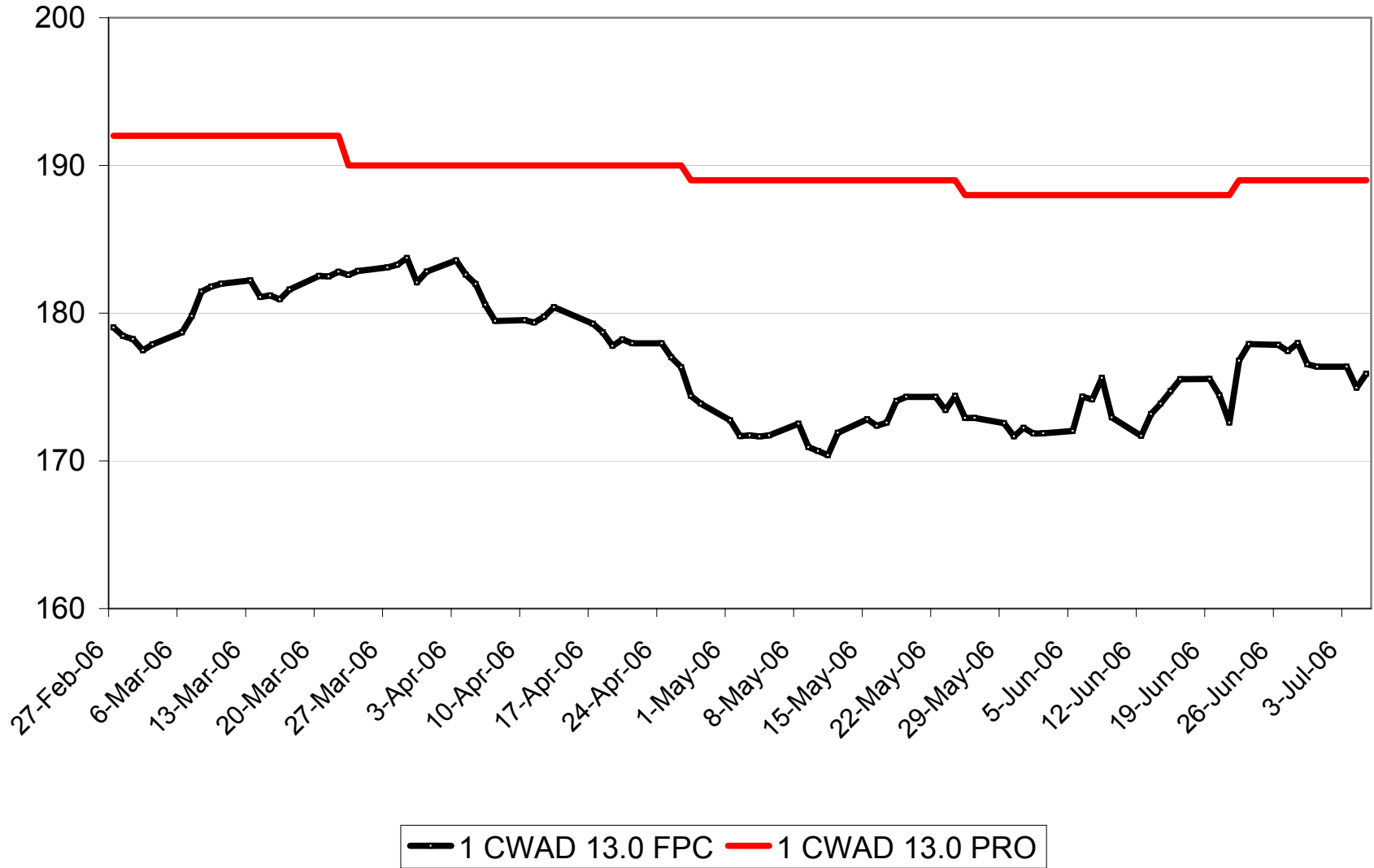
2006-07 No. 1 CWSWS Fixed Price

\$Cdn/tonne



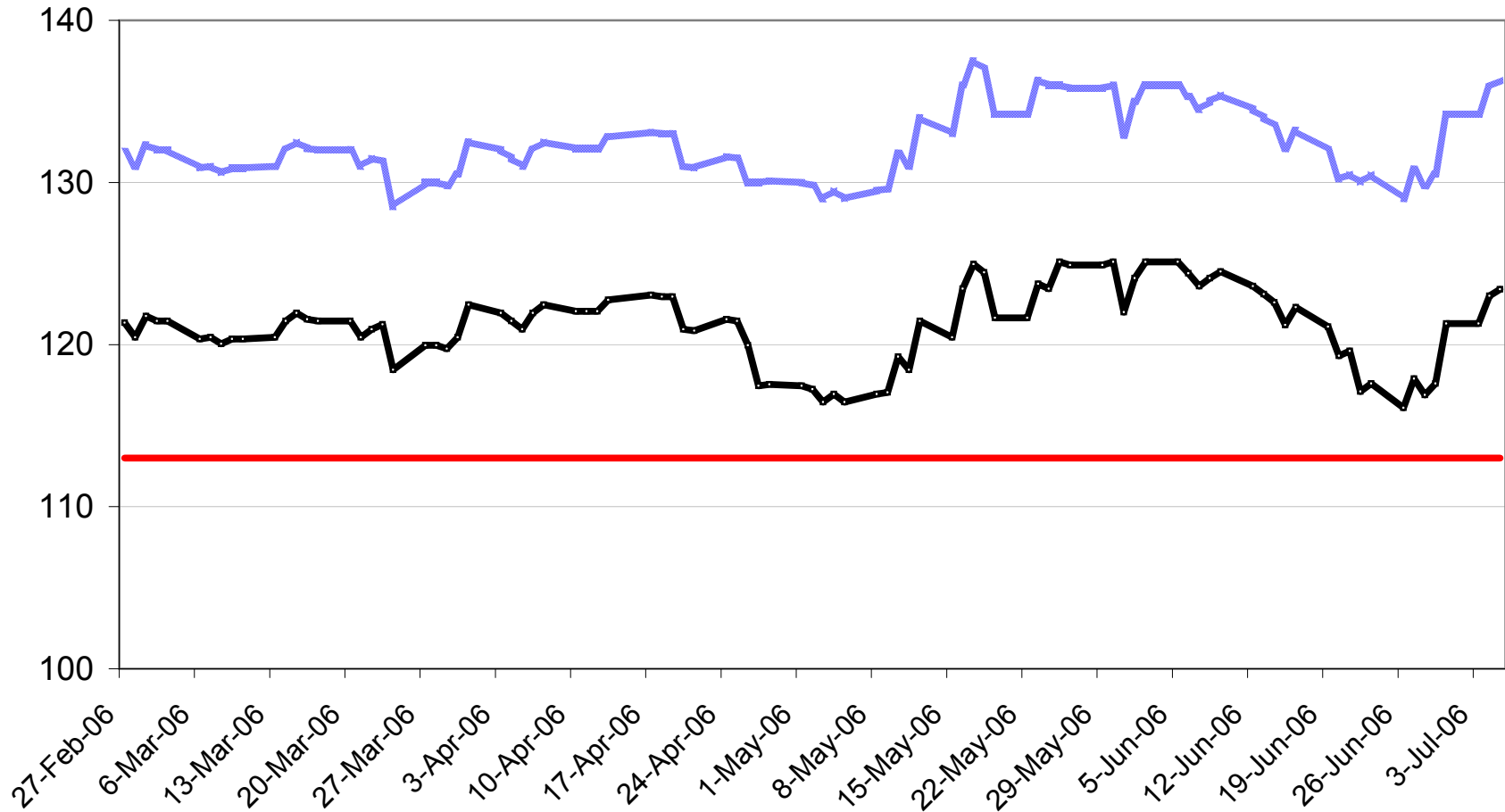
2006-07 No. 1 CWAD 13.0 Fixed Price

\$Cdn/tonne



2006-07 No. 1 CW Barley Fixed Price

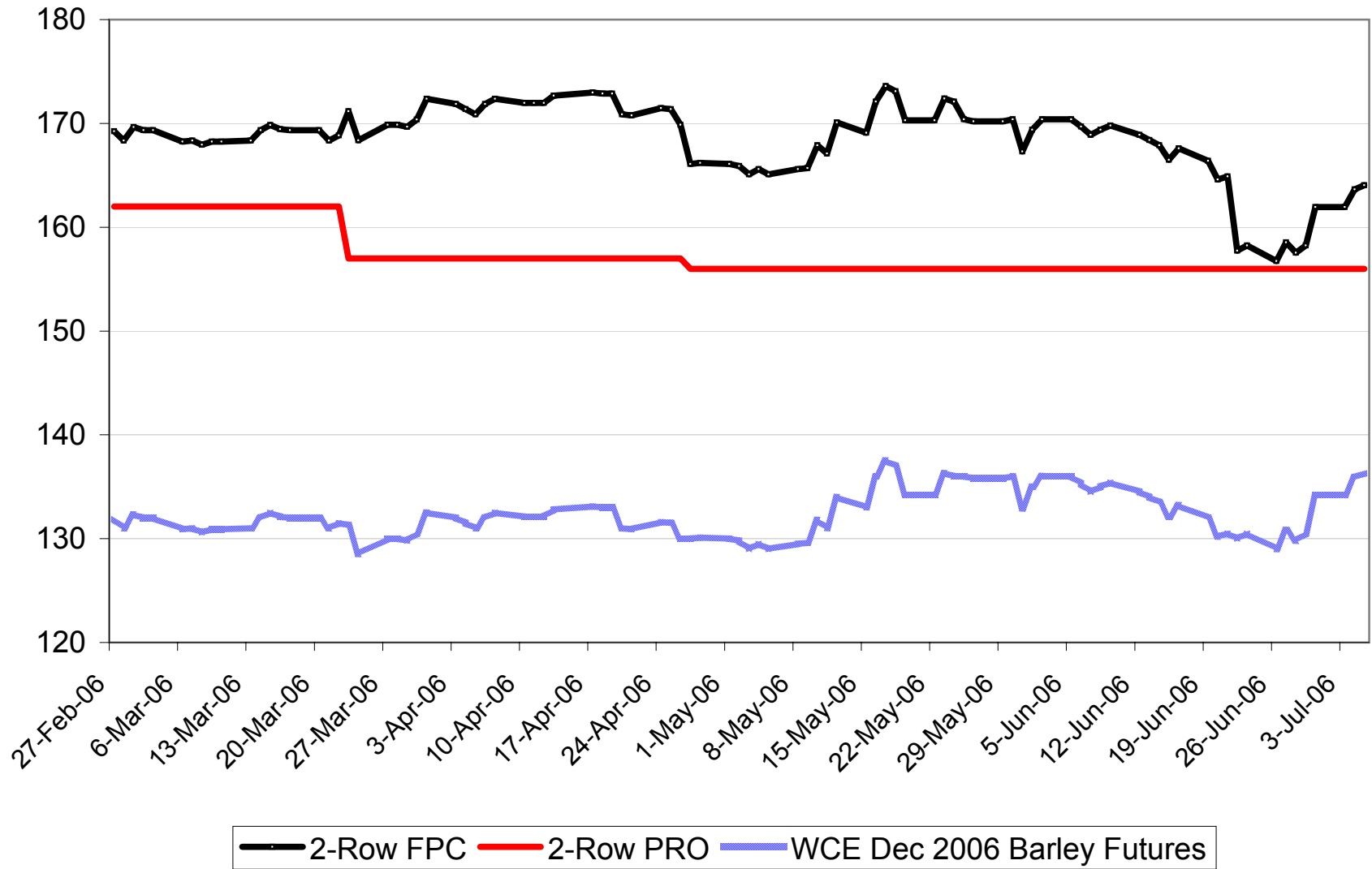
\$Cdn/tonne



— 1 CW FPC — 1 CW PRO — WCE Dec 2006 Barley Futures

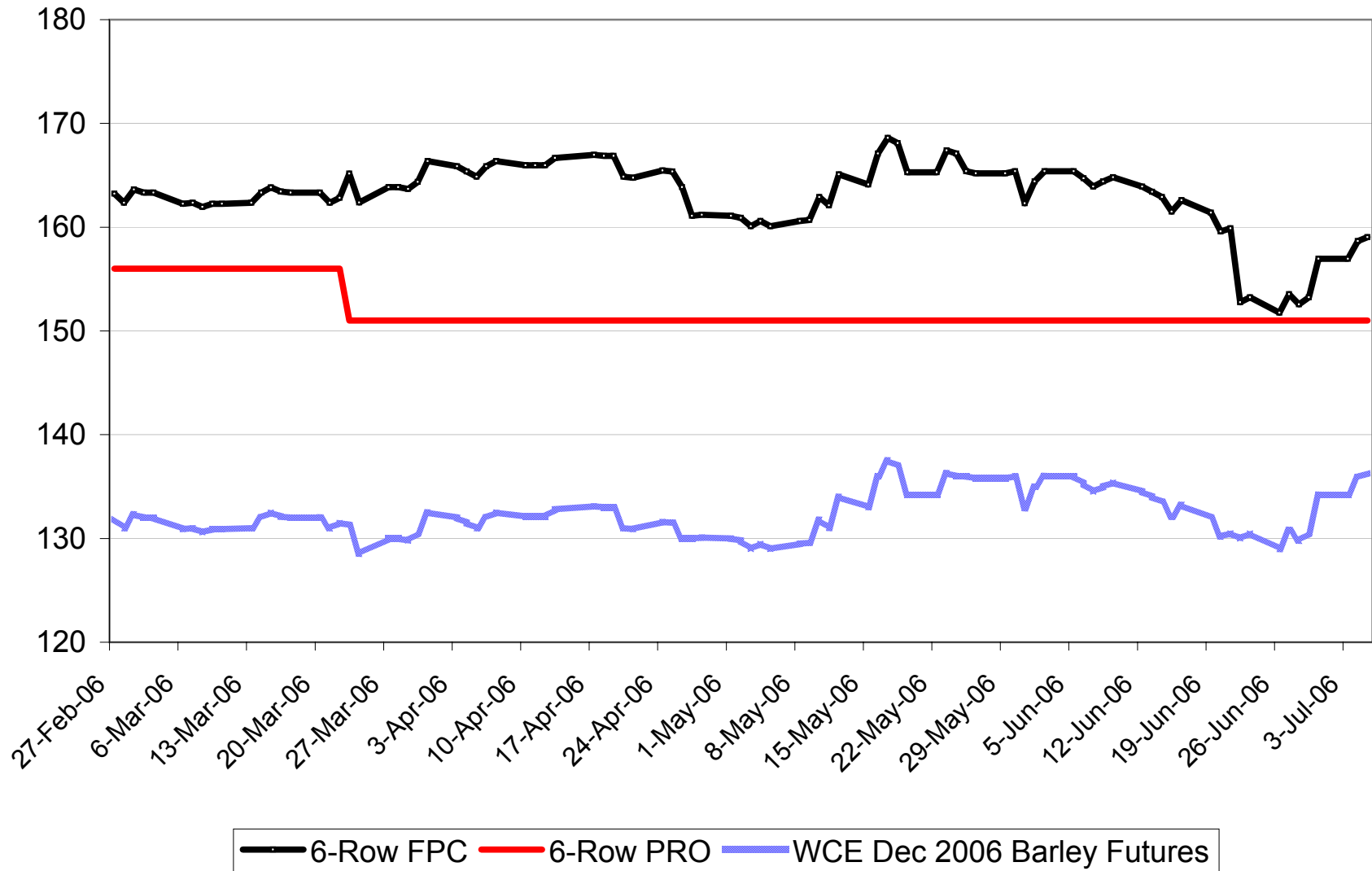
2006-07 Std. Sel. Two-Row Fixed Price

\$Cdn/tonne



2006-07 Std Sel Six-Row Fixed Price

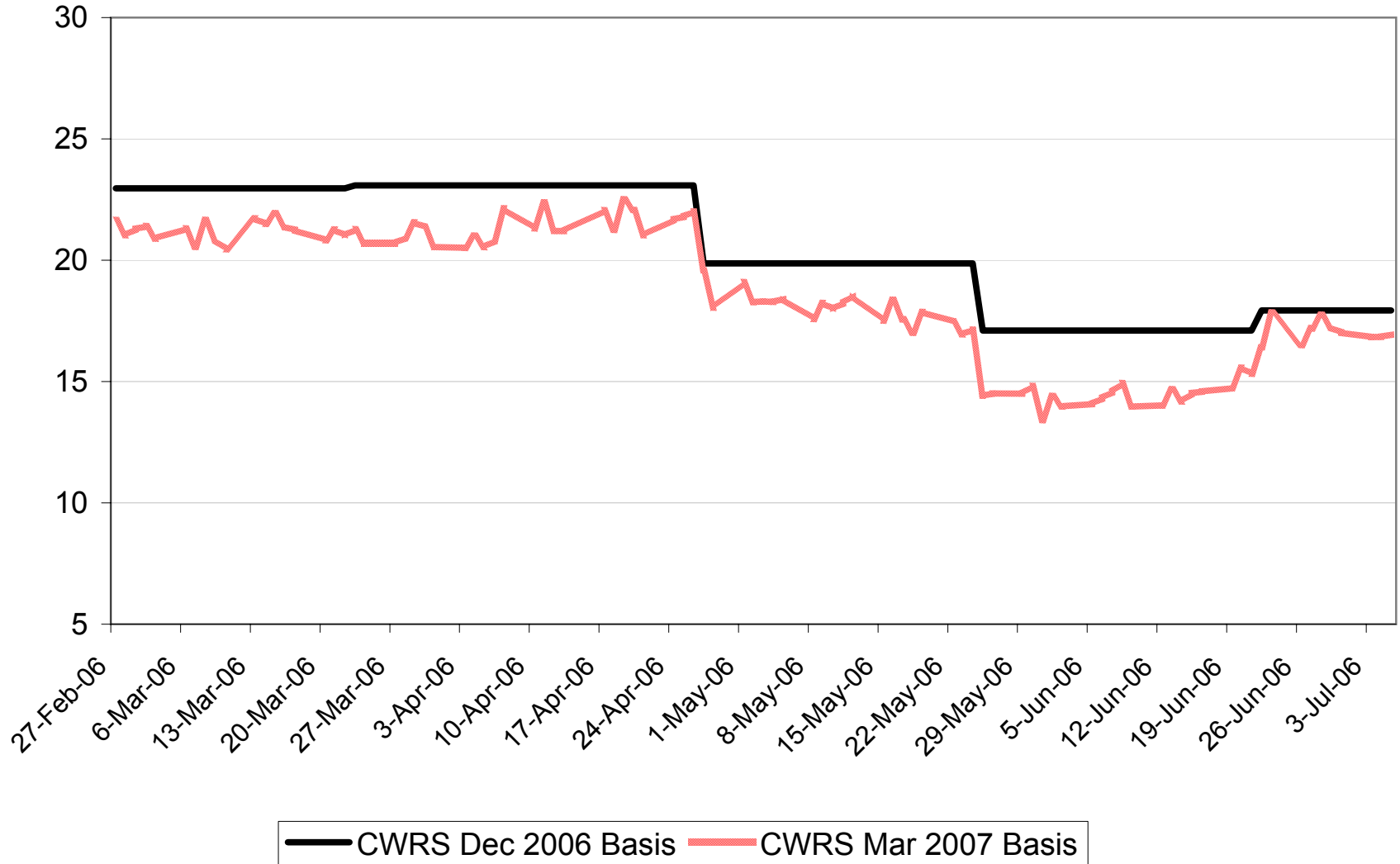
\$Cdn/tonne



2006-07 No. 1 CWRS 13.5 Adjusted Basis

\$Cdn/tonne

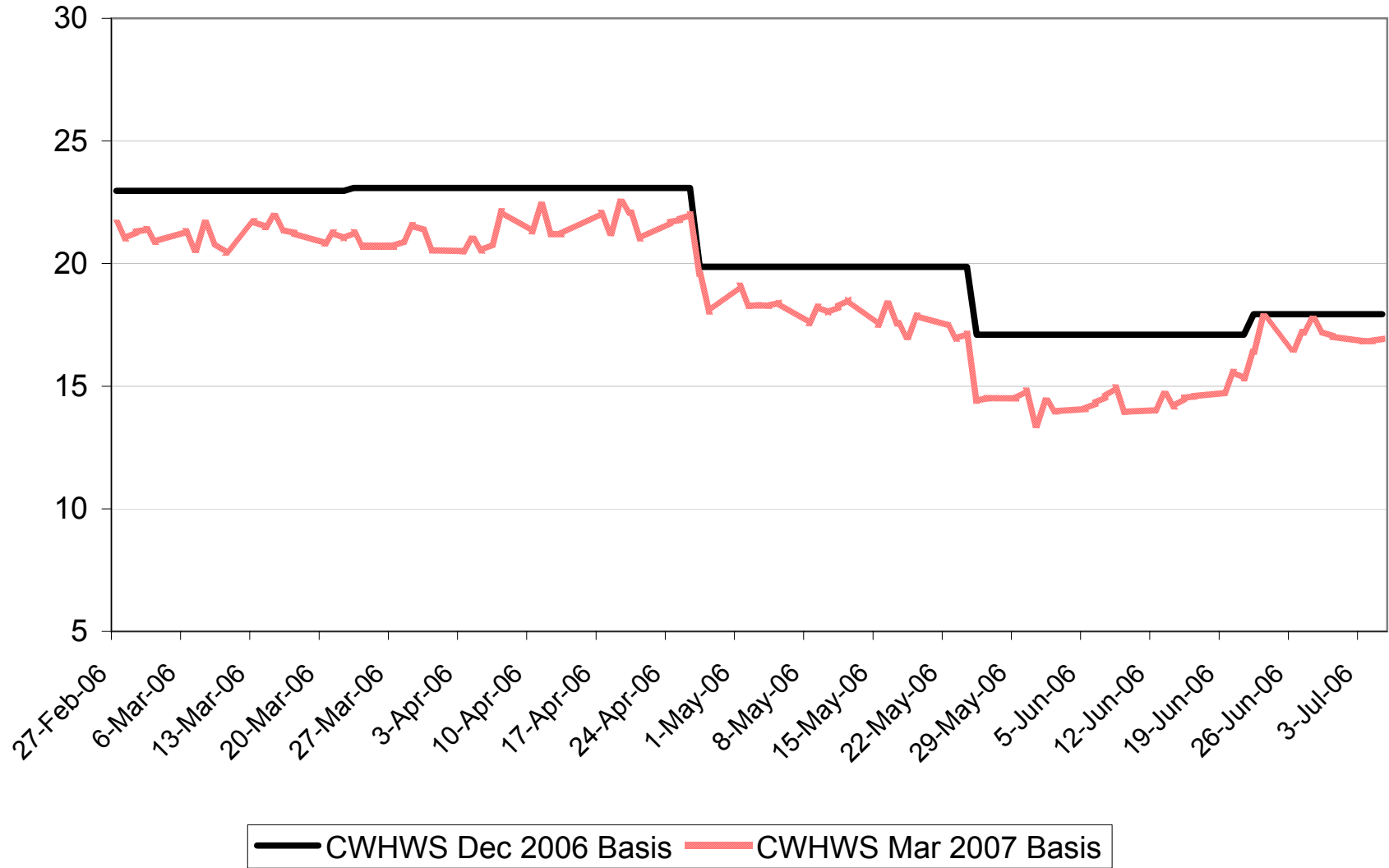
\$ per tonne above Minn HRS Futures



2006-07 No. 1 CWHWS 13.5 Adjusted Basis

\$Cdn/tonne

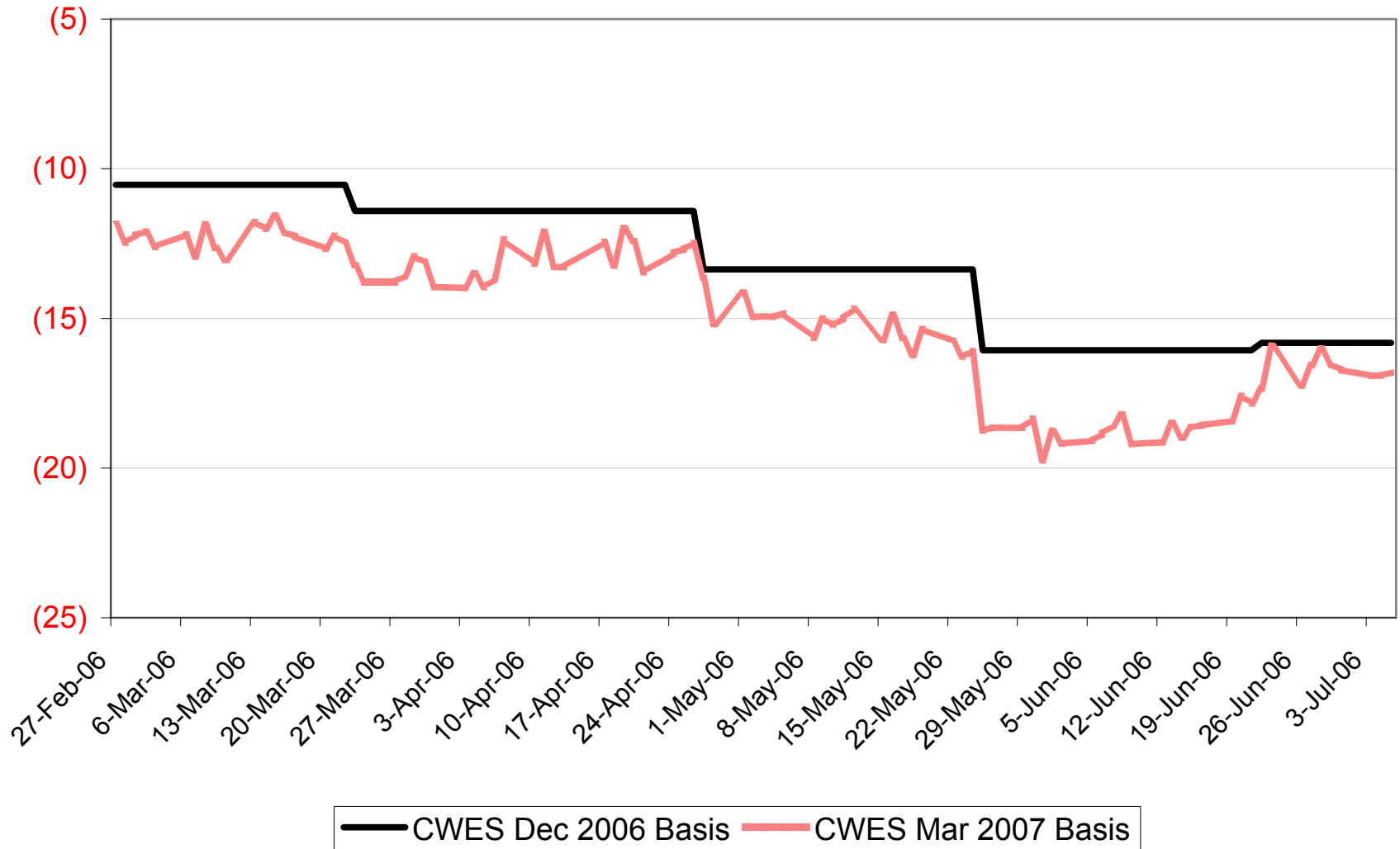
\$ per tonne above Minn HRS Futures



2006-07 No. 1 CWES Adjusted Basis

\$ per tonne below Minn HRS Futures

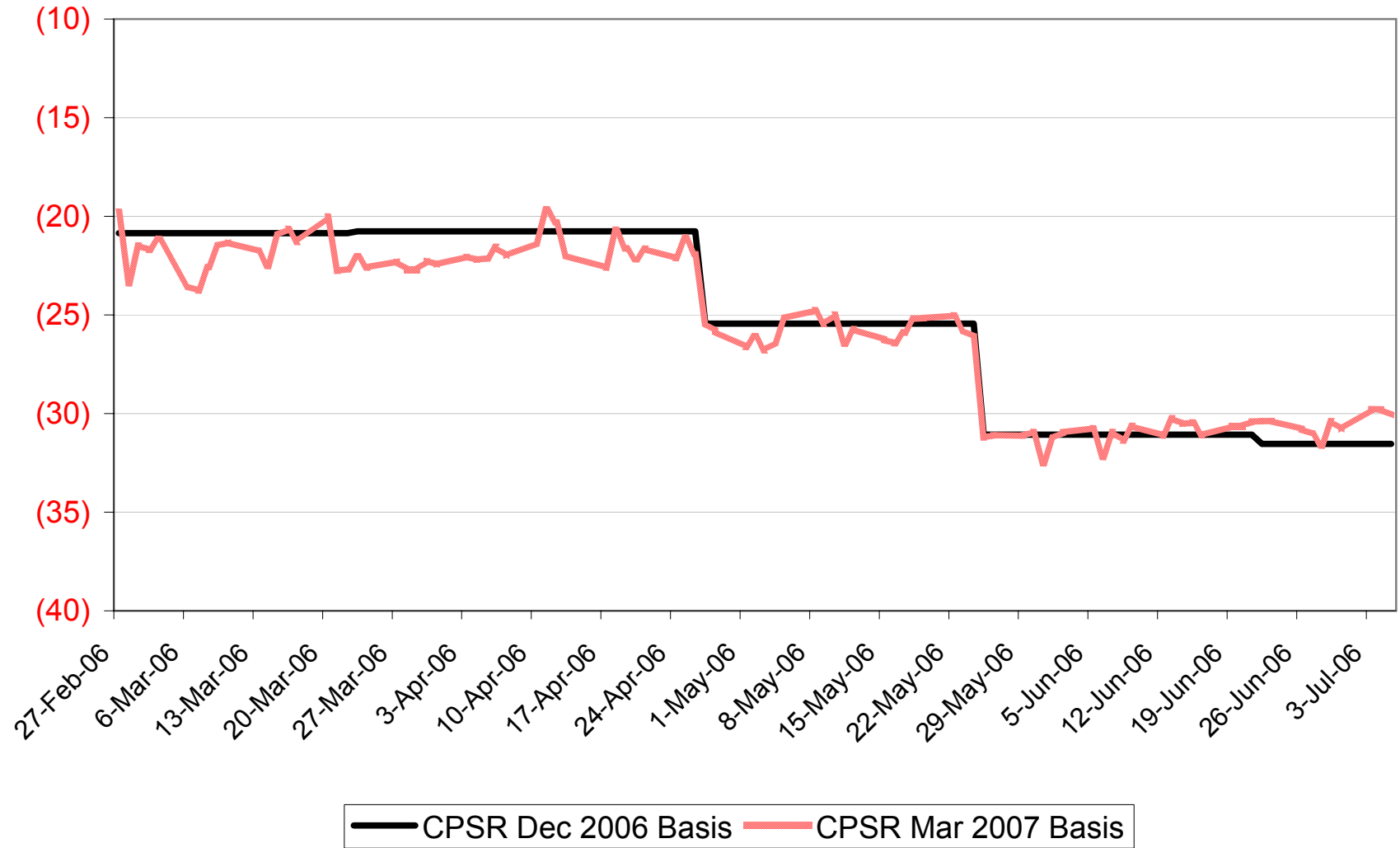
\$Cdn/tonne



2006-07 No. 1 CPSR Adjusted Basis

\$ per tonne below Kansas HRW Futures

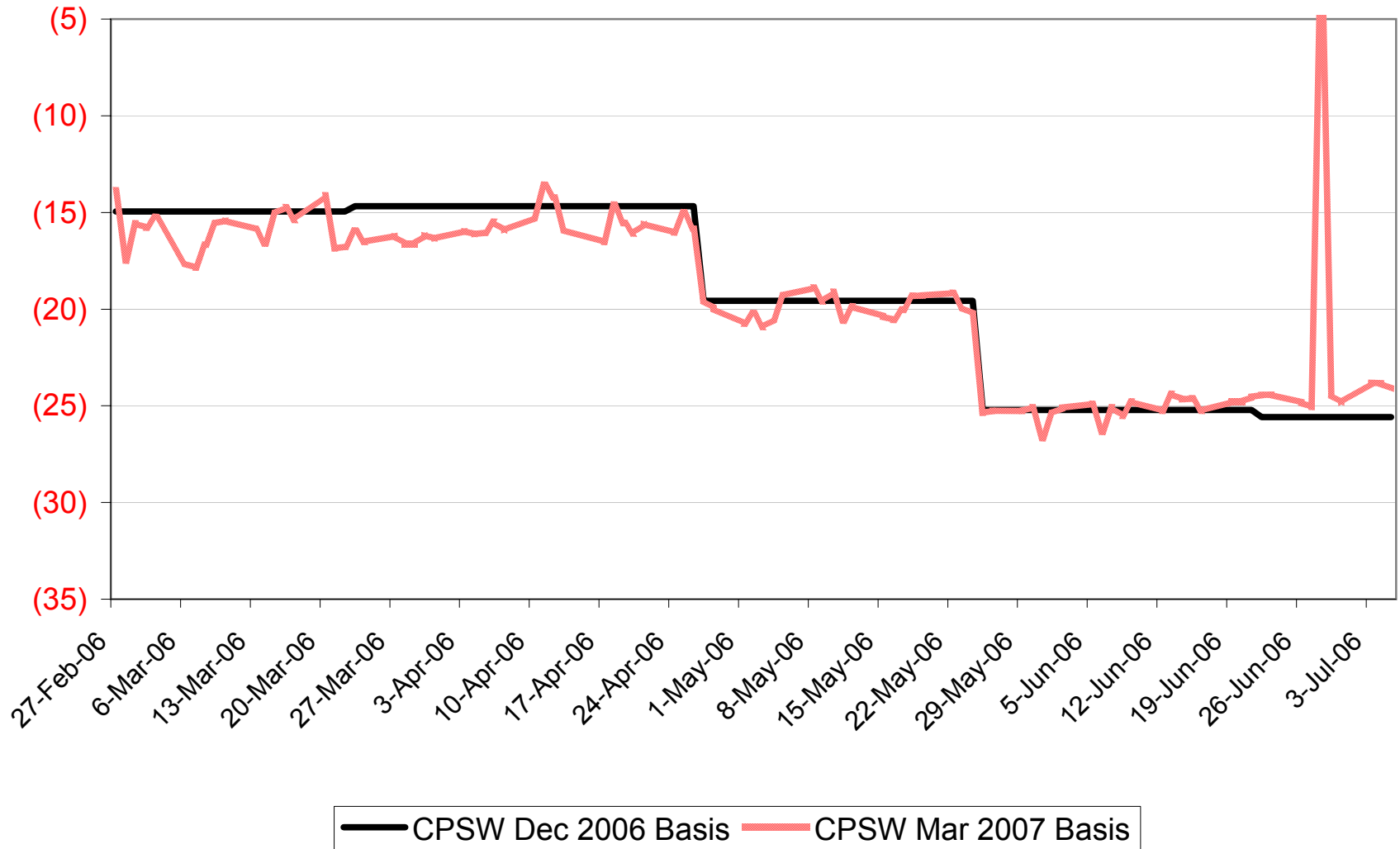
\$Cdn/tonne



2006-07 No. 1 CPSW Adjusted Basis

\$ per tonne below Kansas HRW Futures

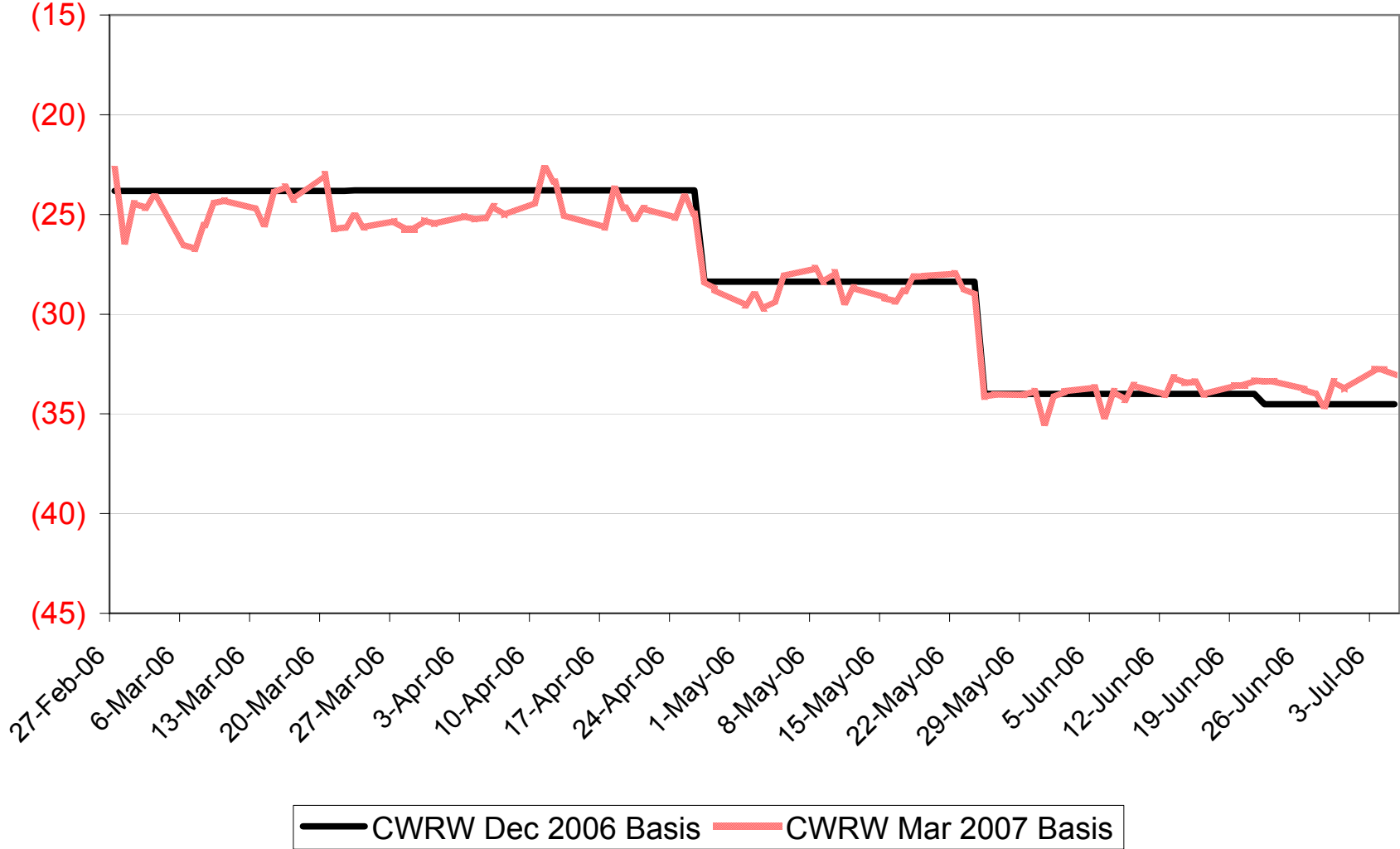
\$Cdn/tonne



2006-07 No. 1 CWRW Adjusted Basis

\$ per tonne below Kansas HRW Futures

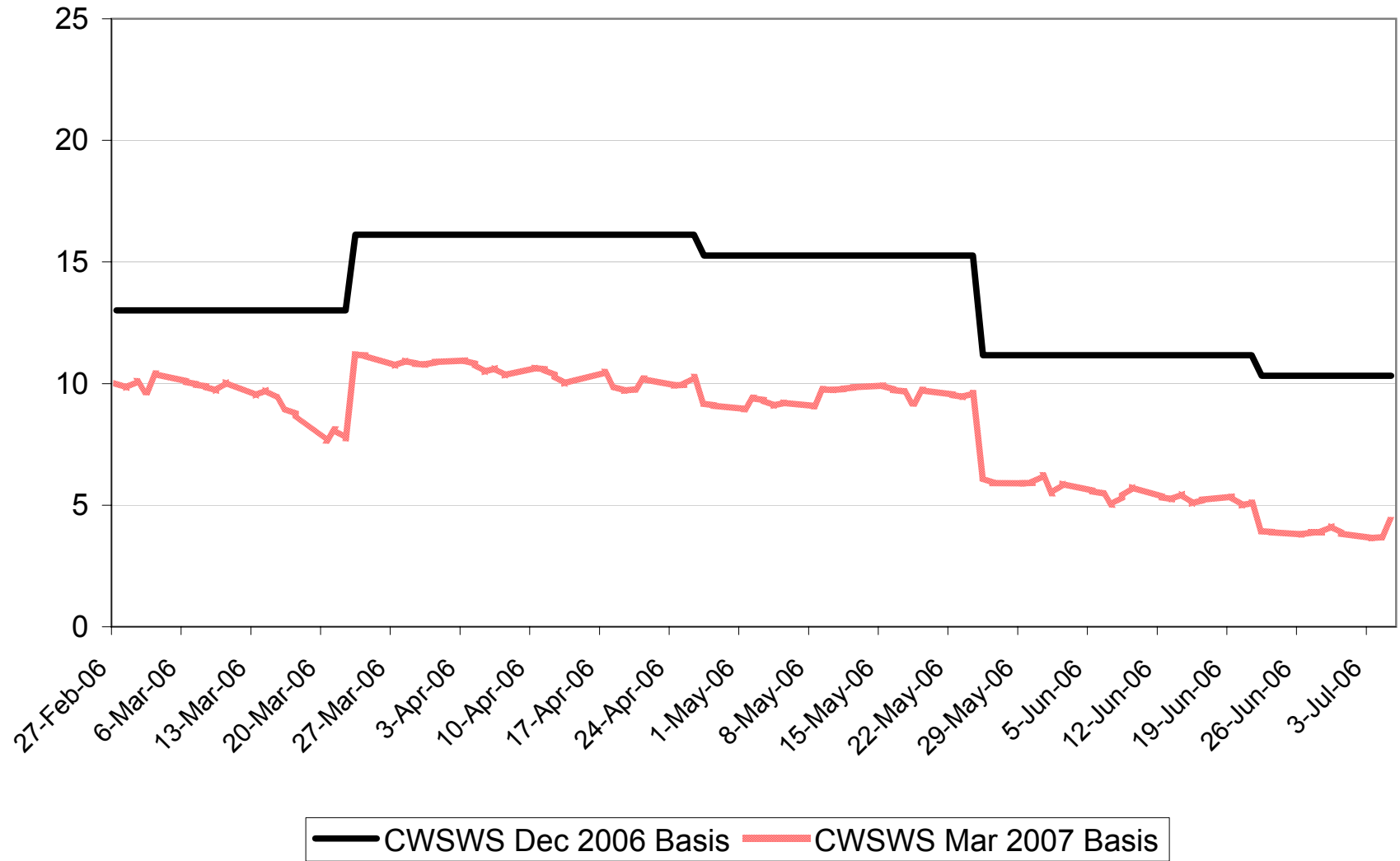
\$Cdn/tonne



2006-07 No. 1 CWSWS Basis Levels

\$ per tonne above Chicago SRW Futures

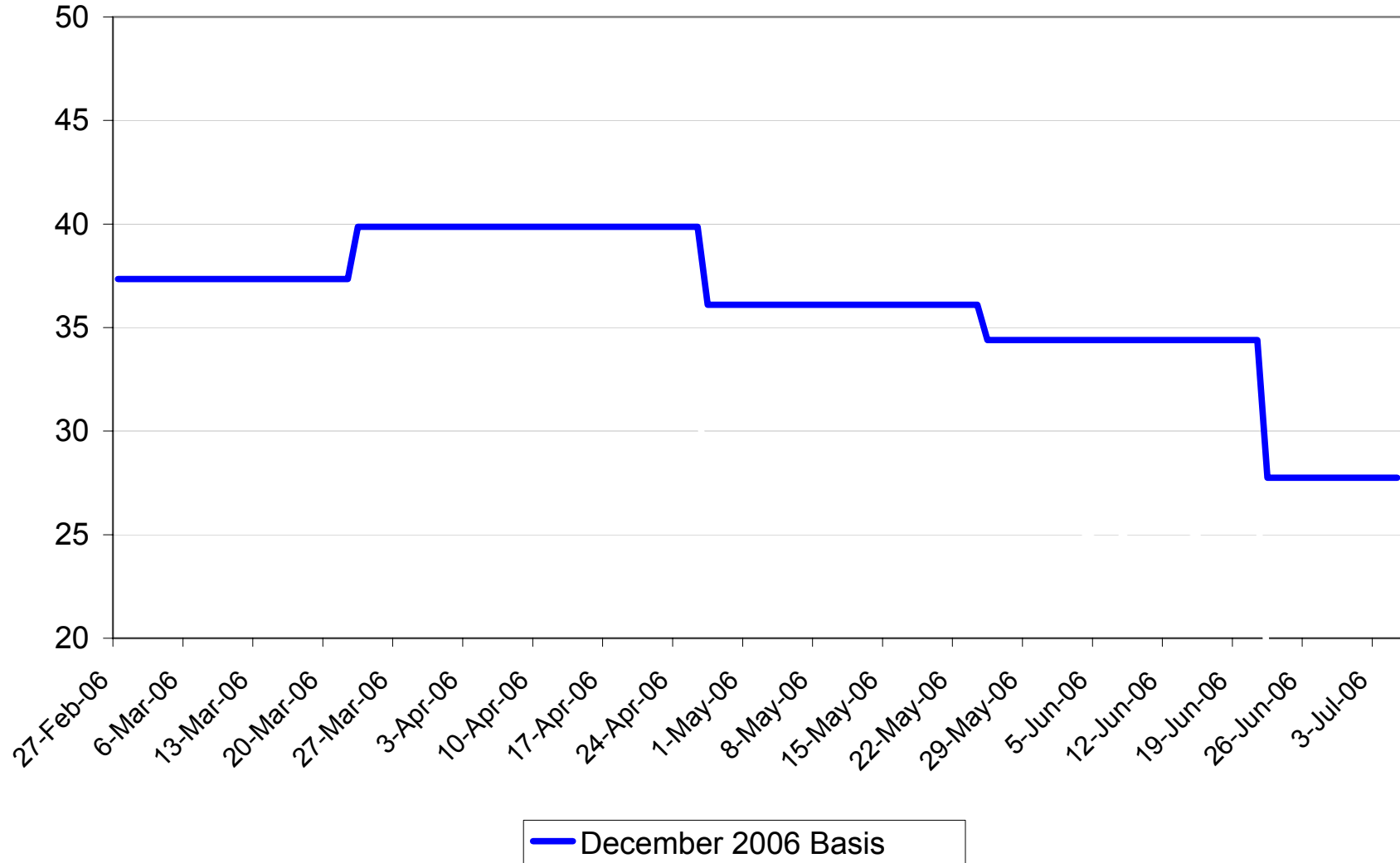
\$Cdn/tonne



2006-07 Std Sel Two-Row Basis Levels

\$ per tonne above WCE W. Barley Futures

\$Cdn/tonne



2006-07 Std Sel Six-Row Basis Levels

\$ per tonne above WCE W. Barley Futures

\$Cdn/tonne

