



Grain Industry Briefing

June 15, 2006

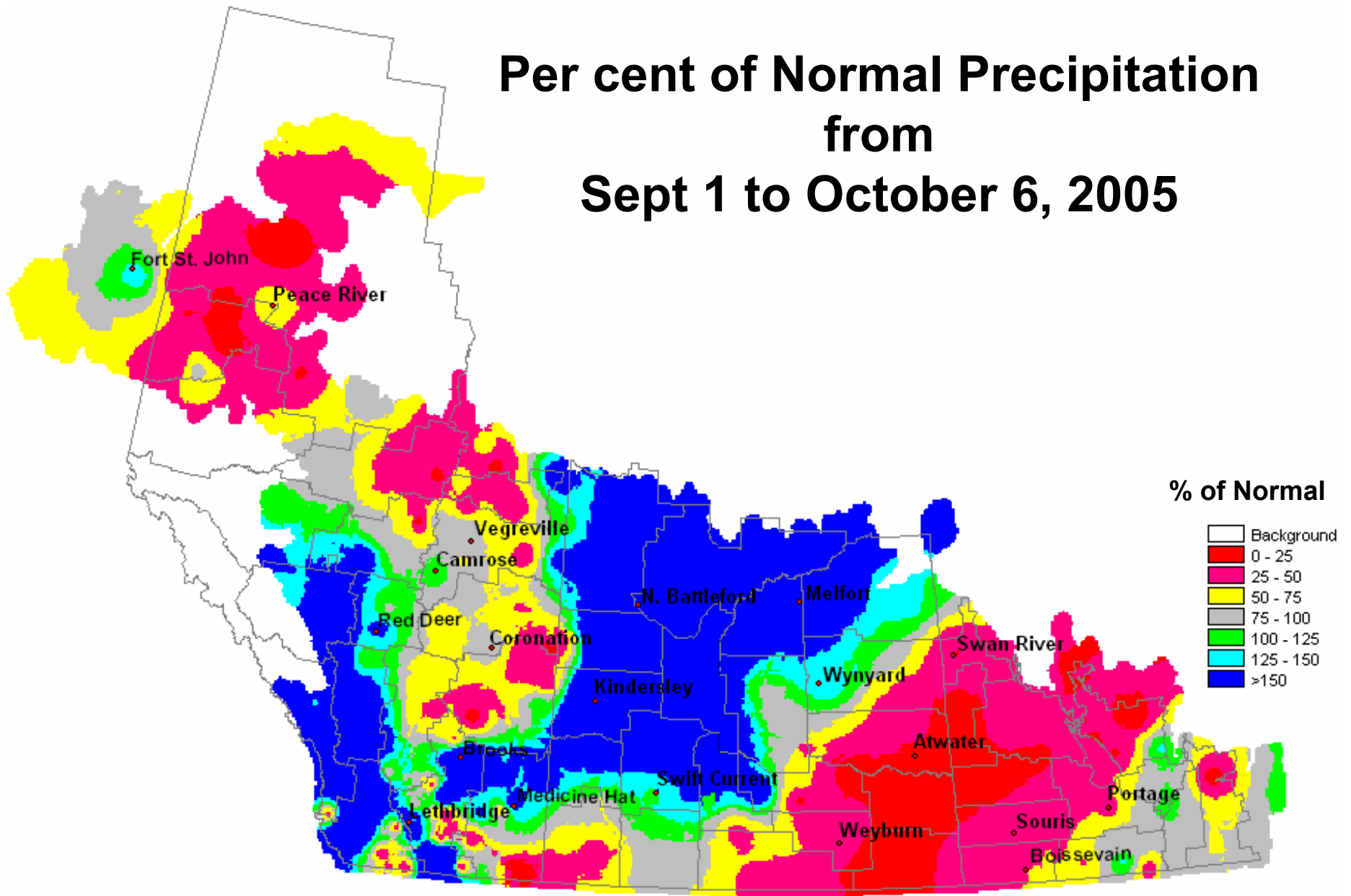


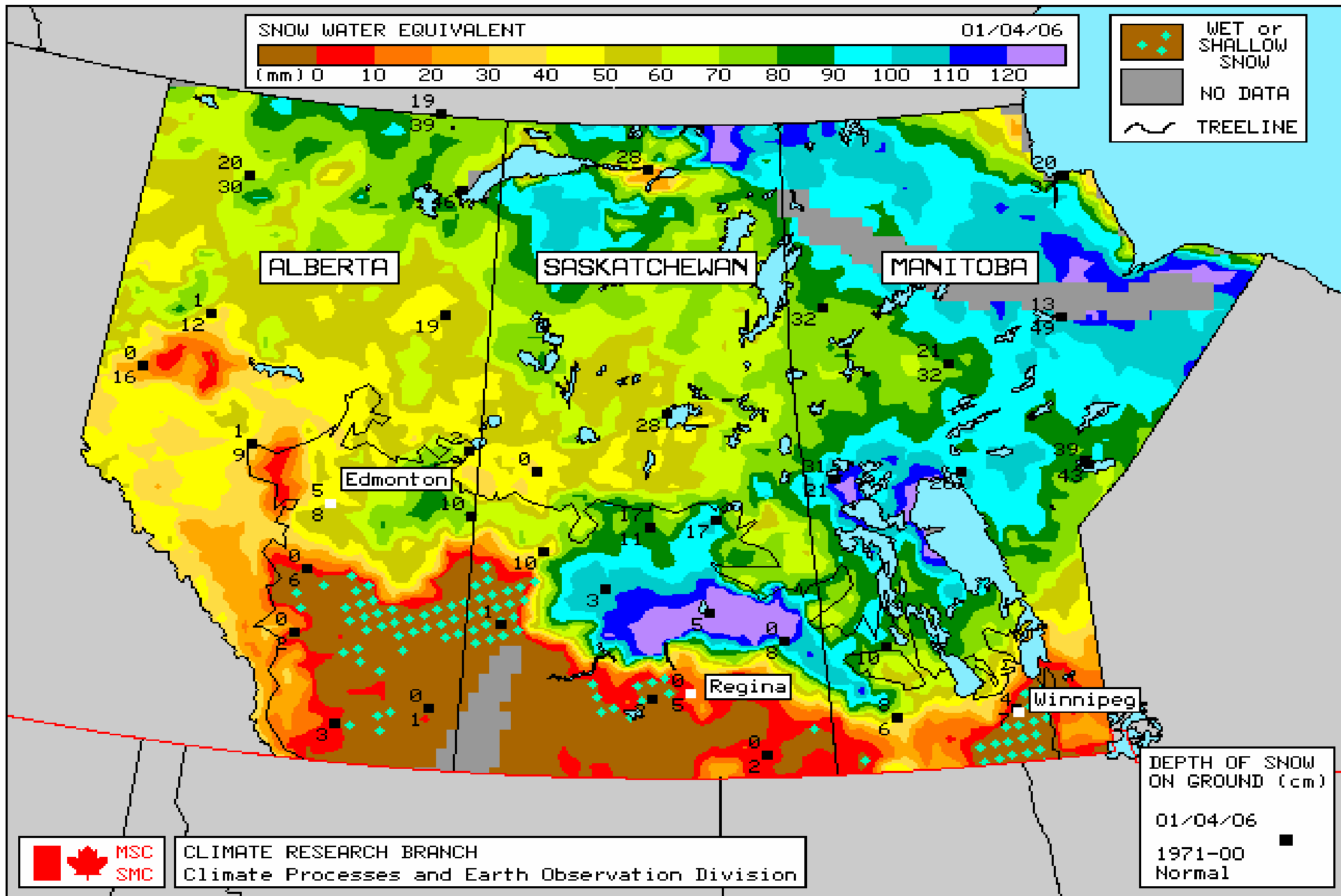
Prairie strong, worldwide

Western Canada

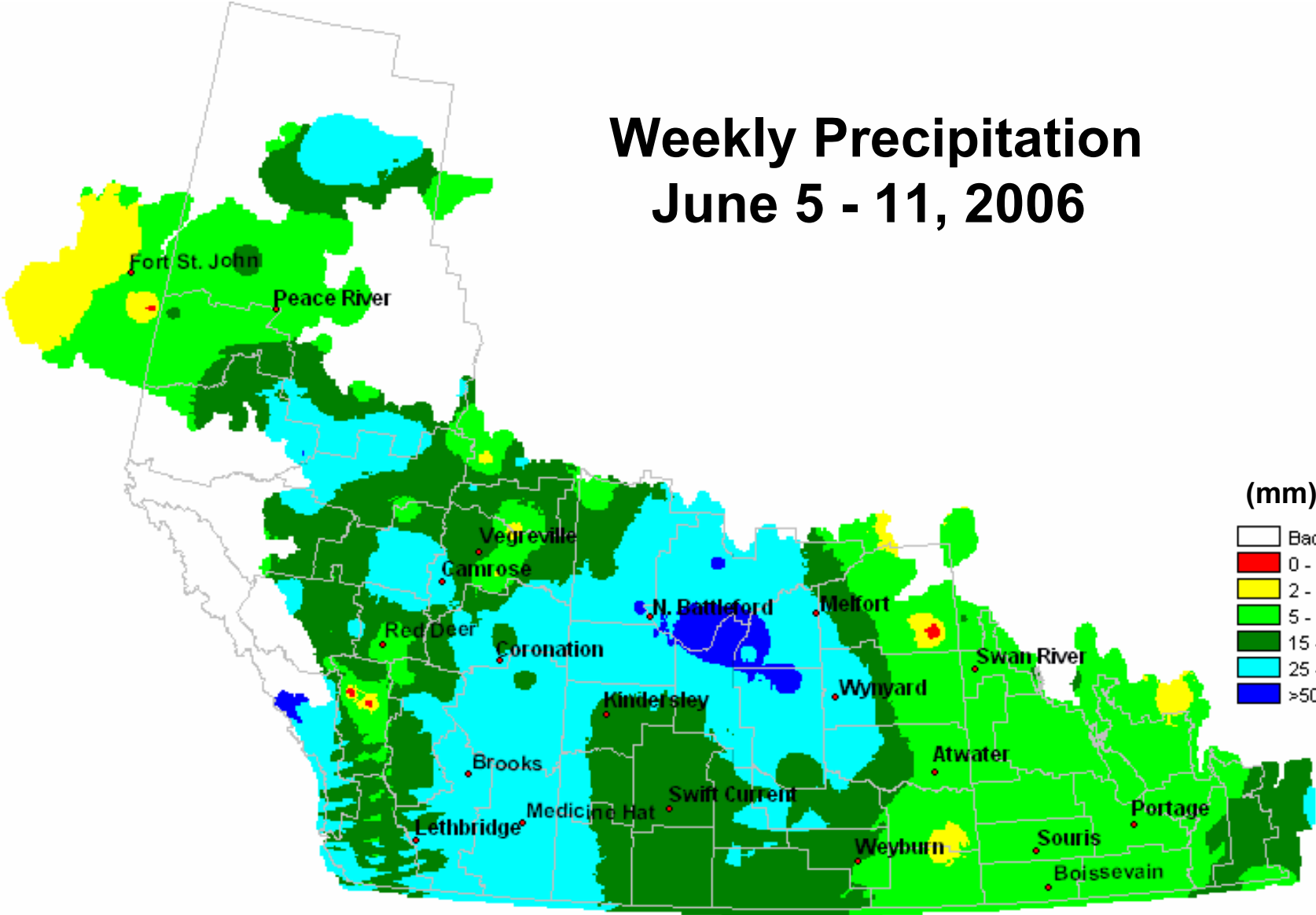
- Heavy rains last week have halted the 2006 planting season
- Prairie crops are mostly in good to excellent condition
- Warmer than normal temperatures have boosted early season growth
- Winter wheat in southern areas will be harvested in late July.

Per cent of Normal Precipitation from Sept 1 to October 6, 2005

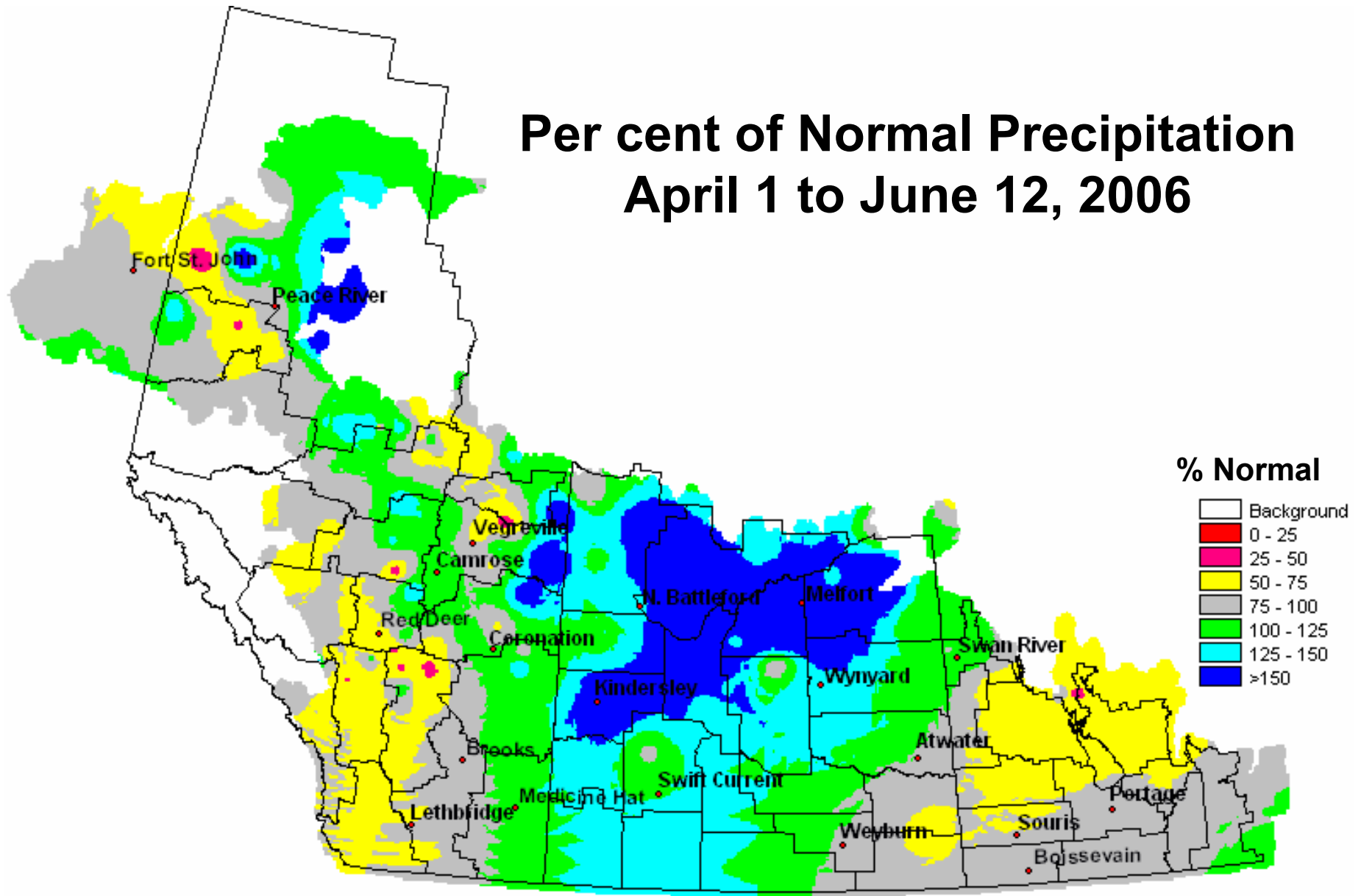




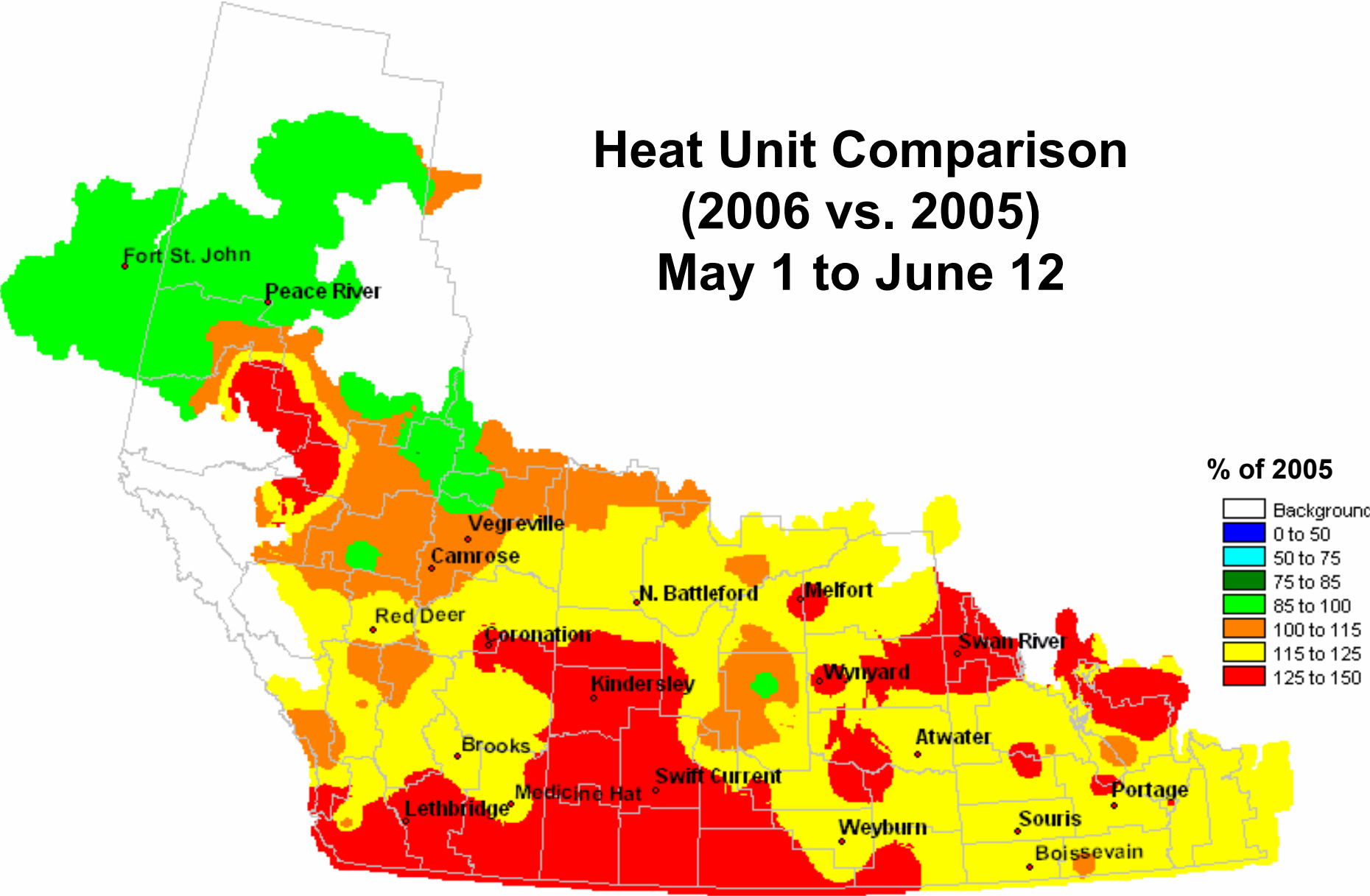
Weekly Precipitation June 5 - 11, 2006



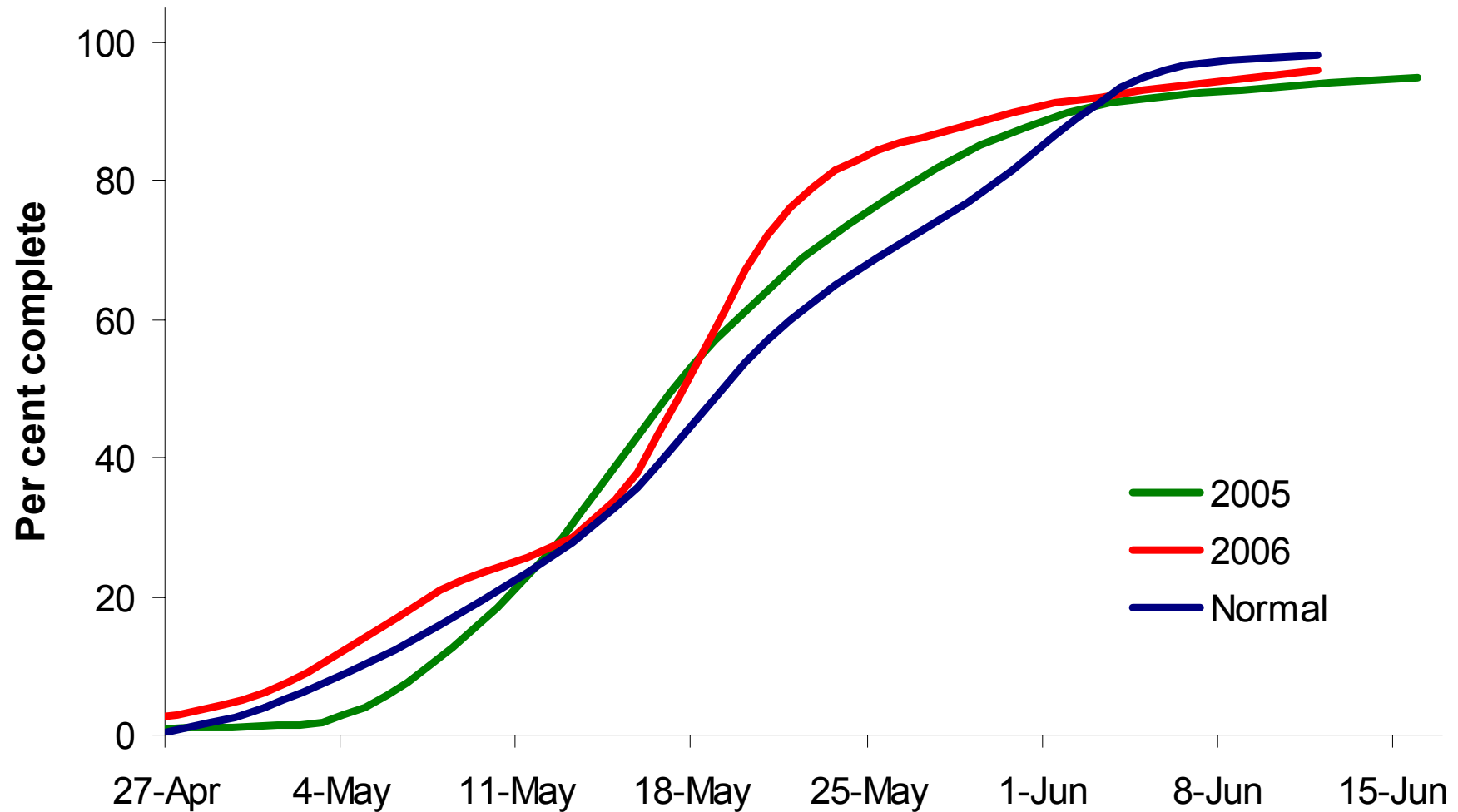
Per cent of Normal Precipitation April 1 to June 12, 2006



Heat Unit Comparison (2006 vs. 2005) May 1 to June 12



Western Canada Seeding Progress - 6 Major Grains



Western Canada sown area

Western Canada Sown Area (million acres)

	Intentions 2006	2005	2006	% Change
All Wheat	24.24	23.77	25.32	6.5%
Durum	4.05	5.79	4.65	-19.6%
Oats	4.90	4.13	4.65	12.7%
Barley	9.71	10.29	9.65	-6.2%
Rye	0.29	0.31	0.29	-4.9%
Flax	2.25	2.08	1.95	-6.3%
Canola	11.58	13.49	11.69	-13.3%
Six Grains and Oilseeds	52.96	54.06	53.55	-0.9%

Yield estimates

Western Canada			
CWB weather model yields*			
	10th Percentile (bu/ac)	50th Percentile (bu/ac)	90th Percentile (bu/ac)
All Wheat	31.7	35.7	38.1
Durum	29.2	33.5	36.1
Oats	61.9	65.1	67.2
Barley	53.1	57.5	60.1
Rye	31.1	34.8	36.8
Flax	17.5	20.1	21.4
Canola	24.8	27.3	28.5

*Estimates based on weather model of Western Canada



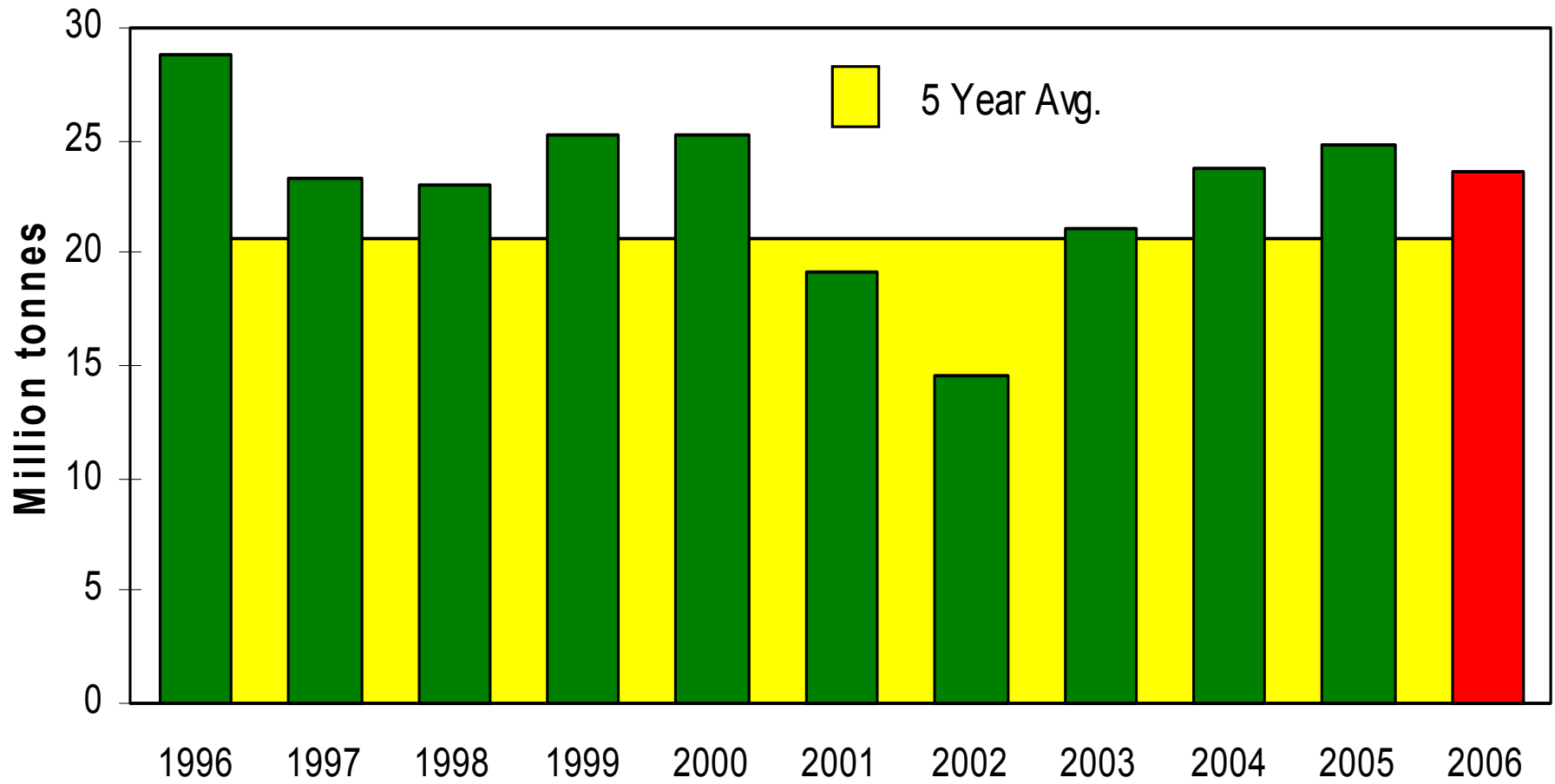
Western Canada Production

Western Canada production* (million tonnes)					
Statistics Canada			CWB		
	5 Year Average	2005	2006		
			10th Percentile	50th Percentile	90th Percentile
All Wheat	20.7	24.8	21.0	23.6	25.2
Durum	4.4	5.9	3.4	4.0	4.3
Oats	2.9	3.0	2.6	2.7	2.8
Barley	10.3	11.7	9.7	10.5	11.0
Rye	0.2	0.3	0.2	0.2	0.3
Flax	0.8	1.1	0.9	1.0	1.1
Canola	6.6	9.6	6.4	7.1	7.4

*These estimates based on weather model yields and CWB area forecasts



Western Canada Wheat Production



World Wheat Production

