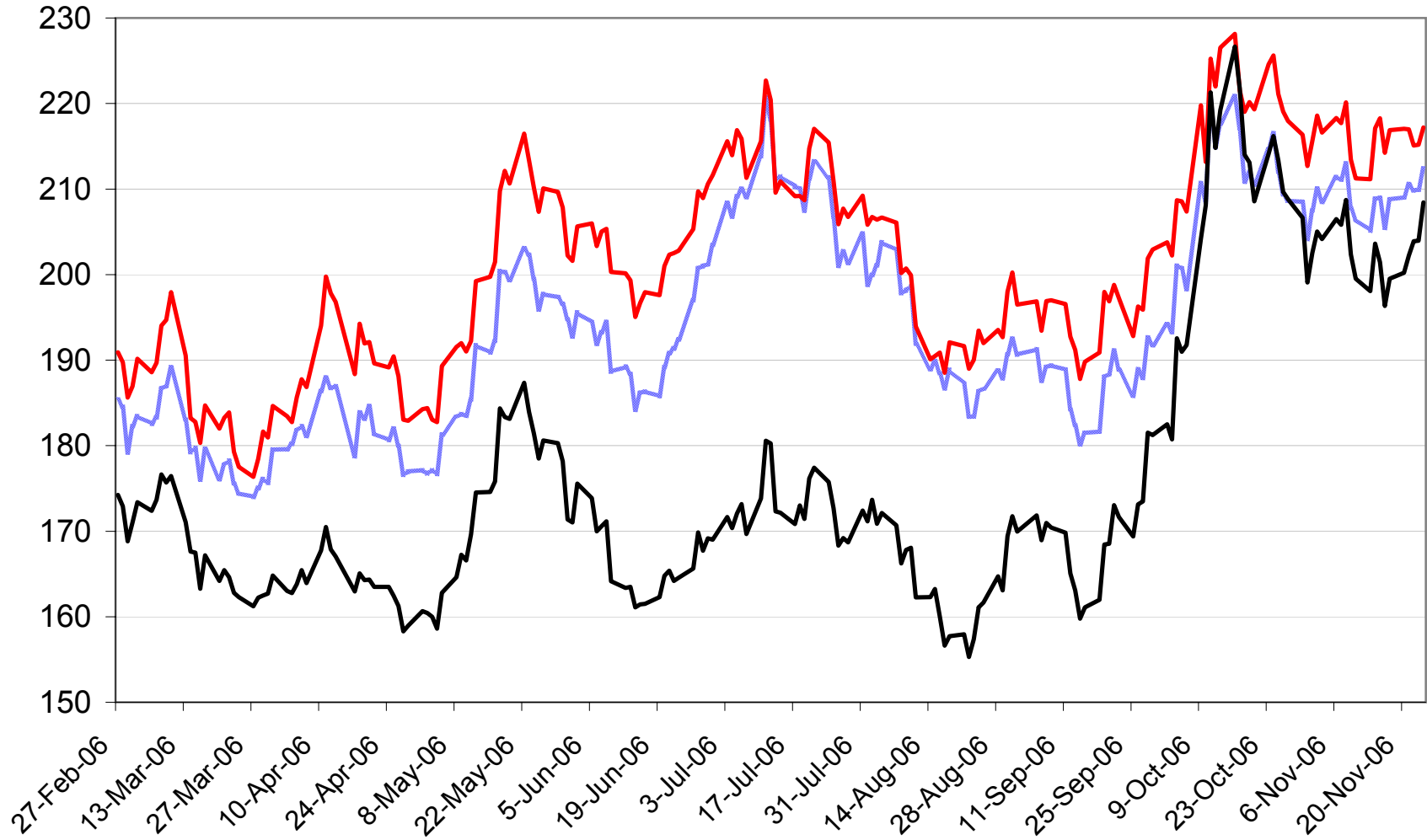


December 2006 Wheat Futures

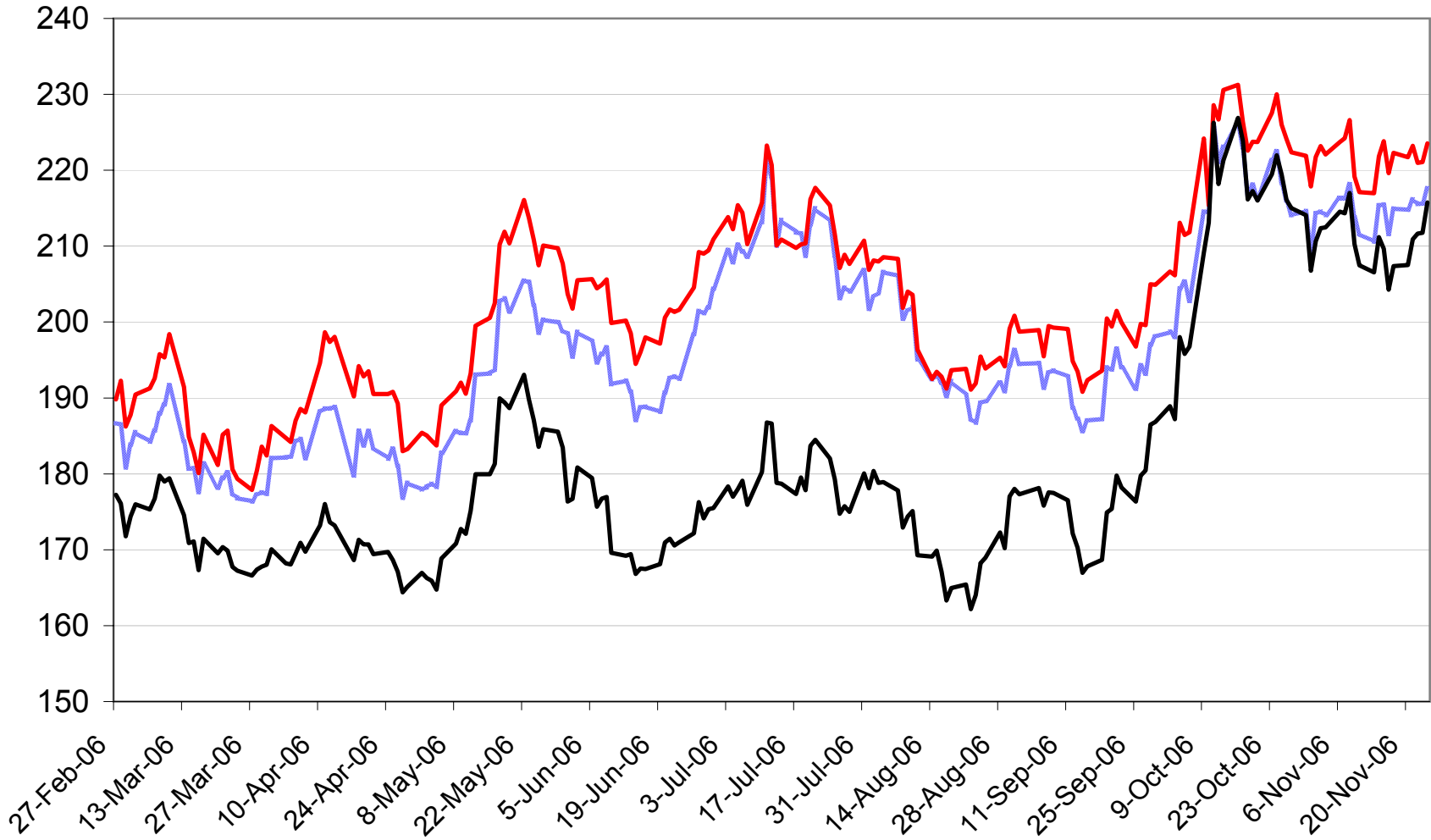
\$Cdn/tonne



— Minneapolis HRS Dec 2006 — Kansas HRW Dec 2006 — Chicago SRW Dec 2006

March 2007 Wheat Futures

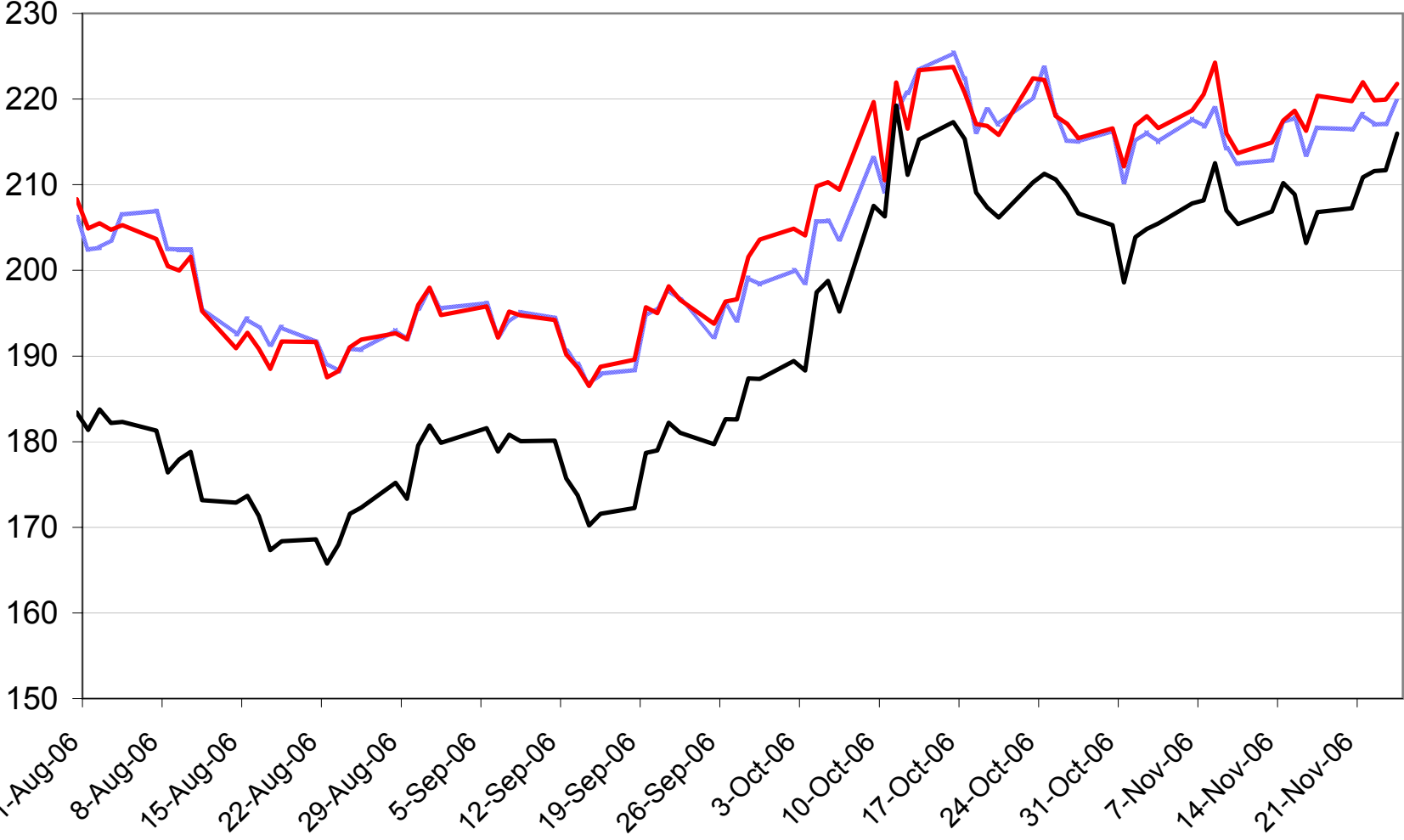
\$Cdn/tonne



— Minneapolis HRS March 2007 — Kansas HRW March 2007 — Chicago SRW March 2007

May 2007 Wheat Futures

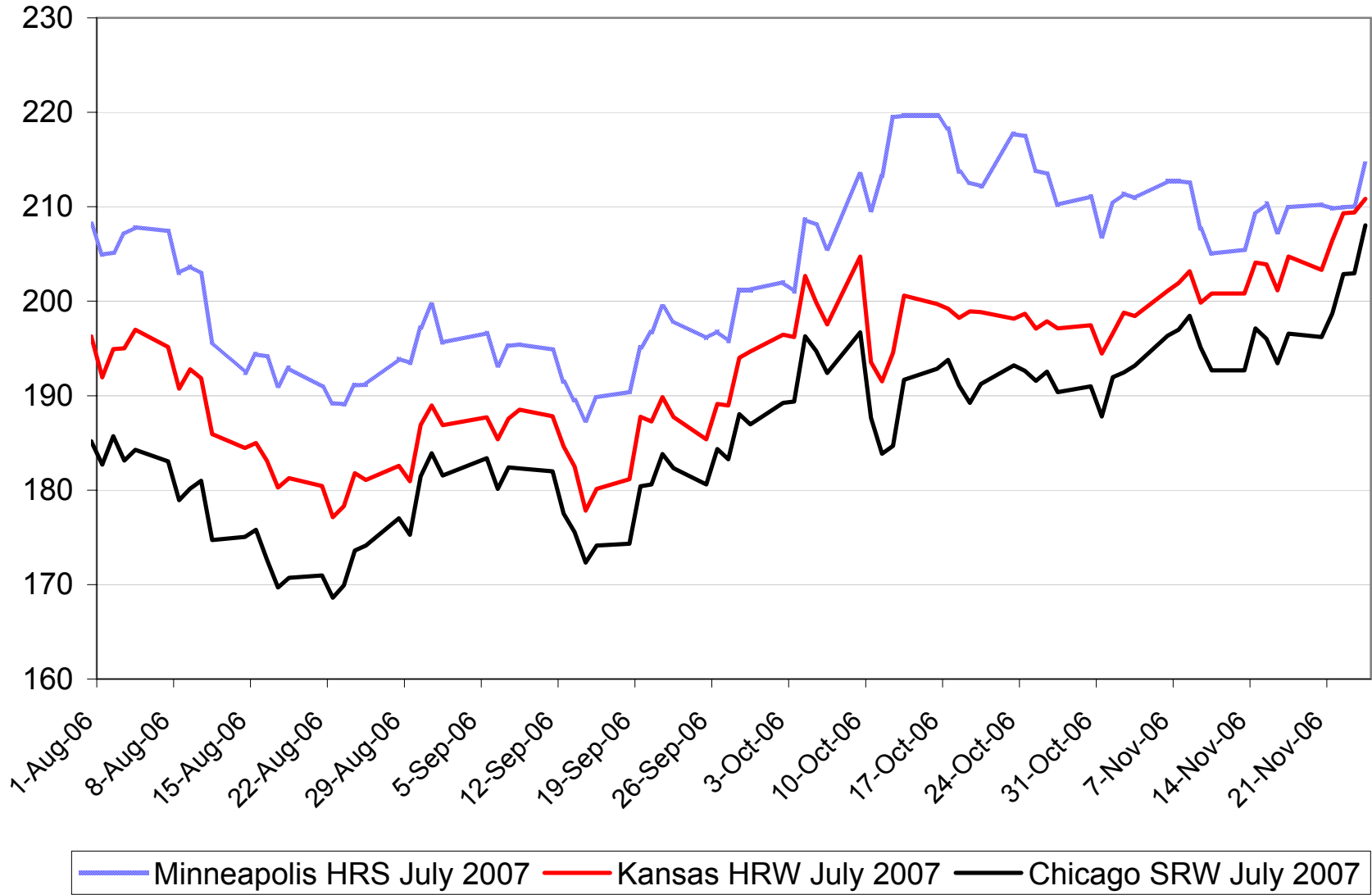
\$Cdn/tonne



— Minneapolis HRS May 2007 — Kansas HRW May 2007 — Chicago SRW May 2007

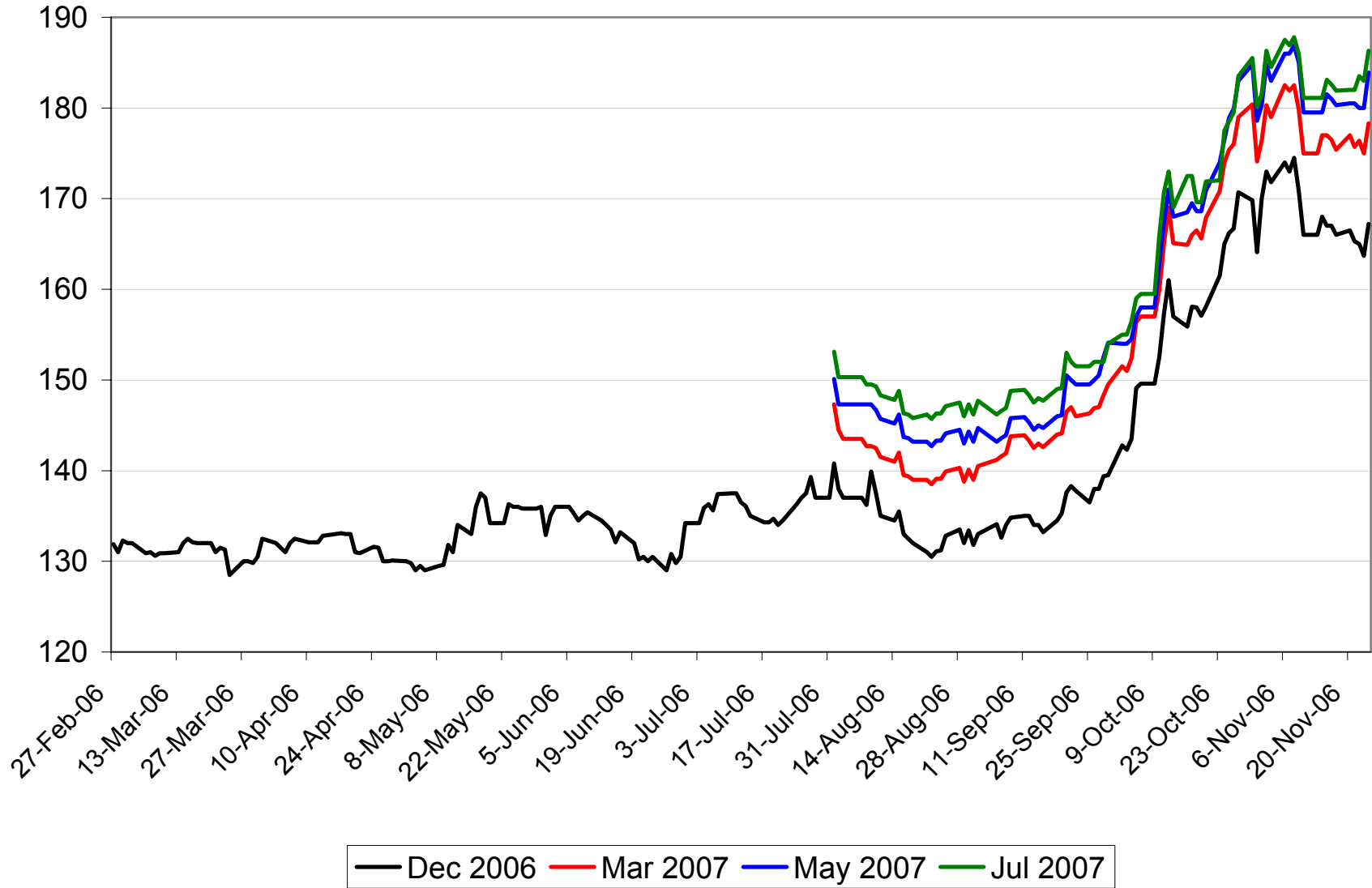
July 2007 Wheat Futures

\$Cdn/tonne

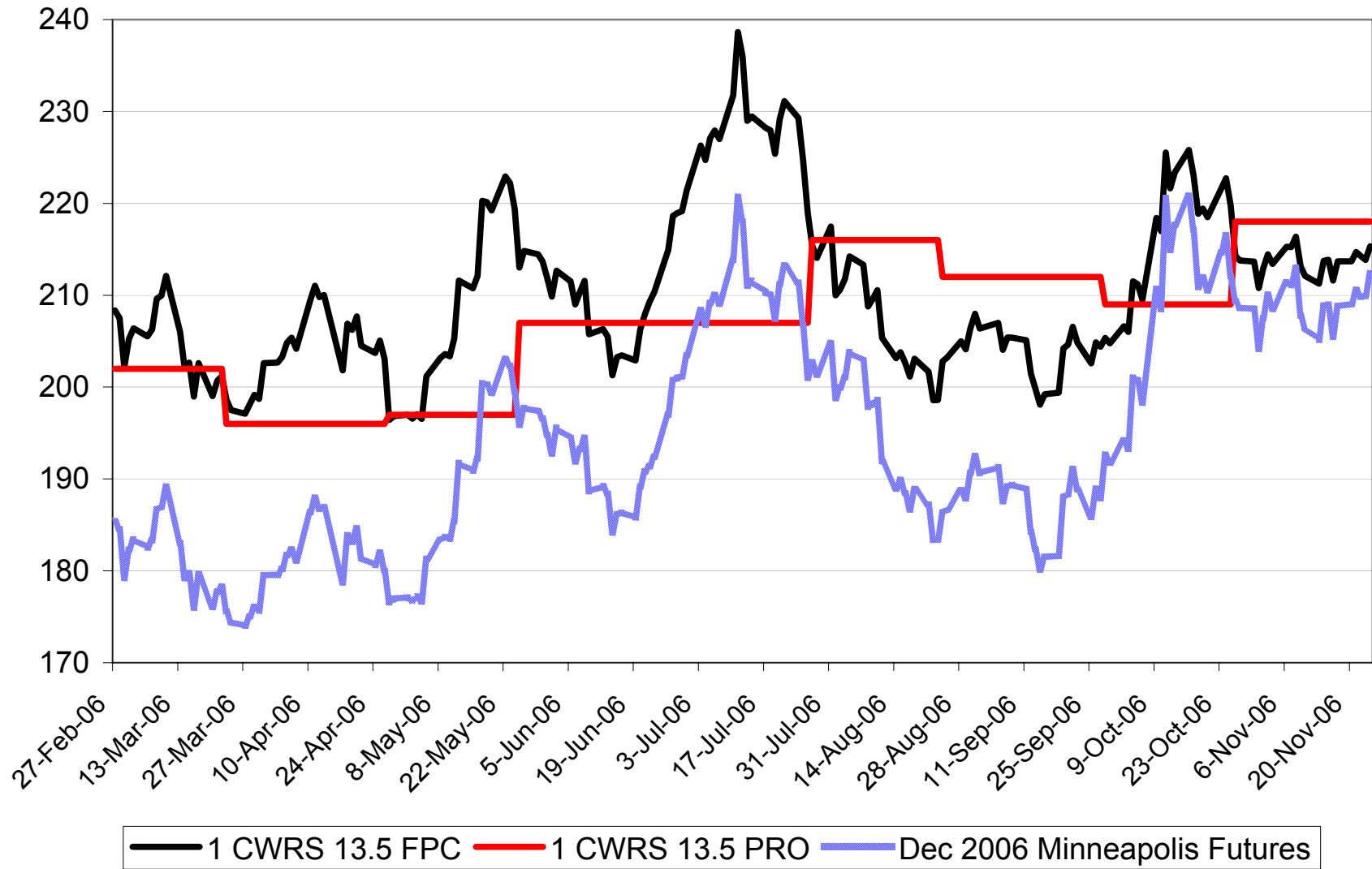


Winnipeg Western Barley Futures

\$Cdn/tonne

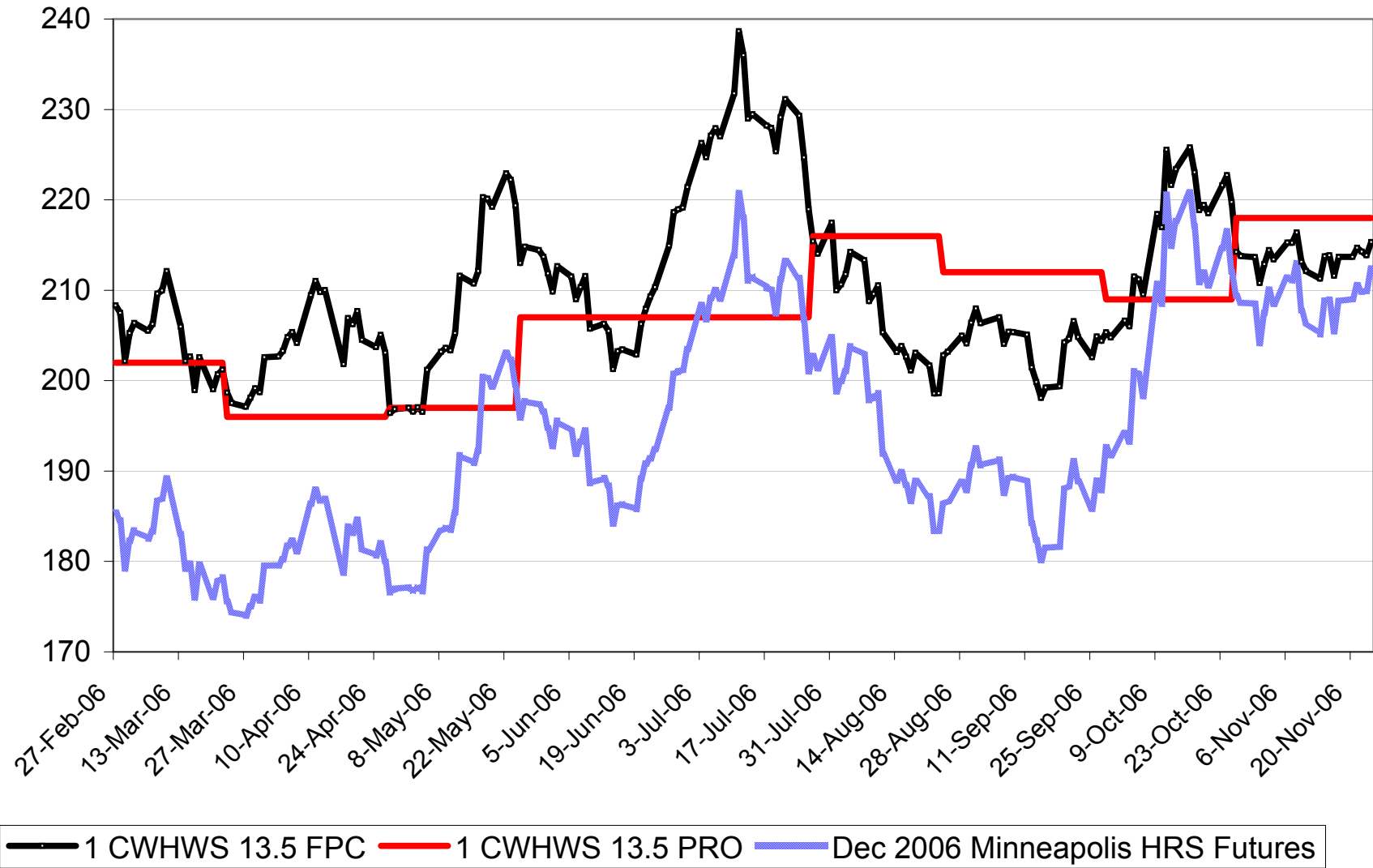


\$Cdn/tonne 2006-07 No.1 CWRS 13.5 Fixed Price



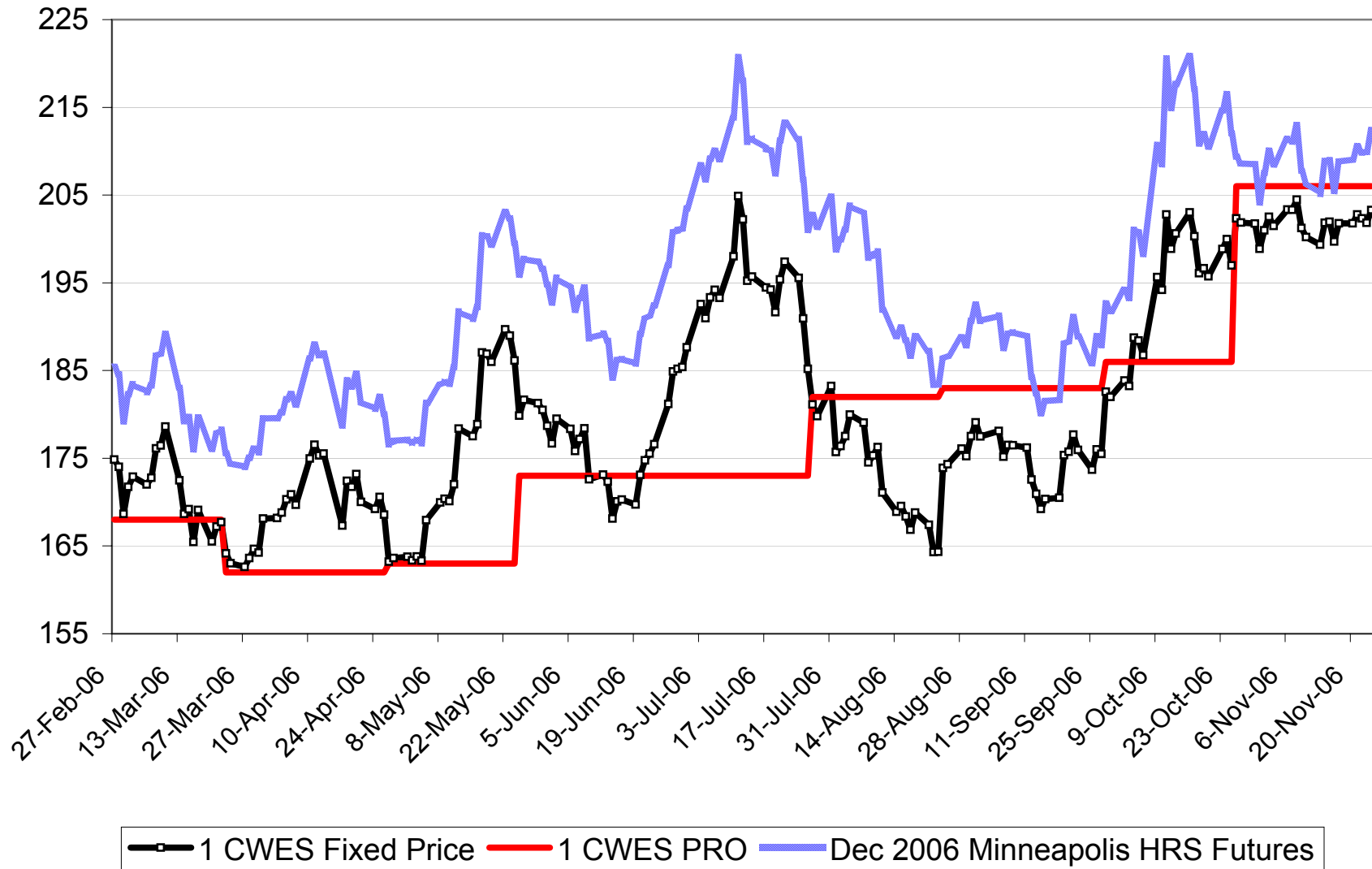
\$Cdn/tonne

2006-07 No. 1 CWHWS 13.5 Fixed Price



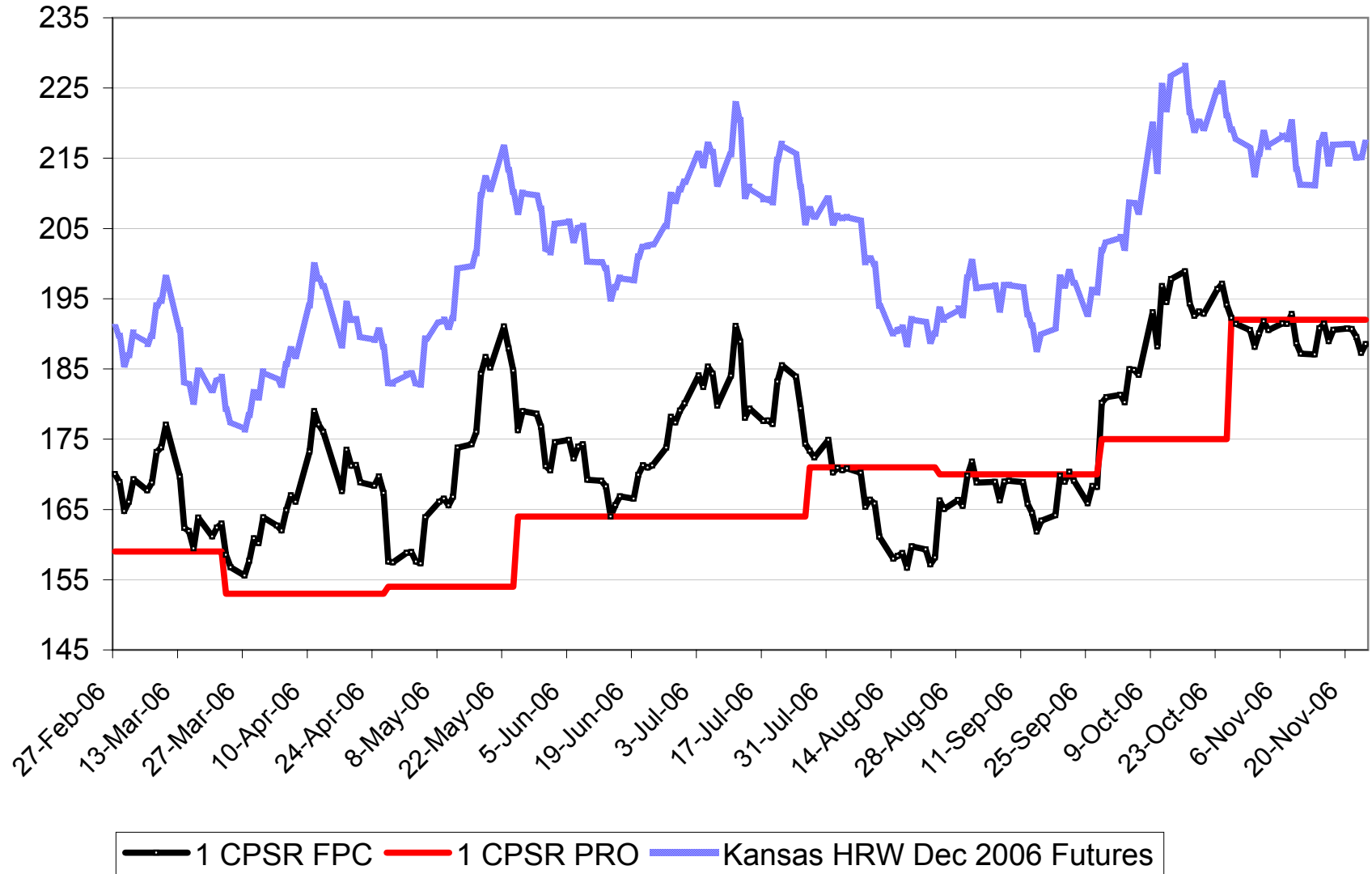
2006-07 No.1 CWES Fixed Price

\$Cdn/tonne



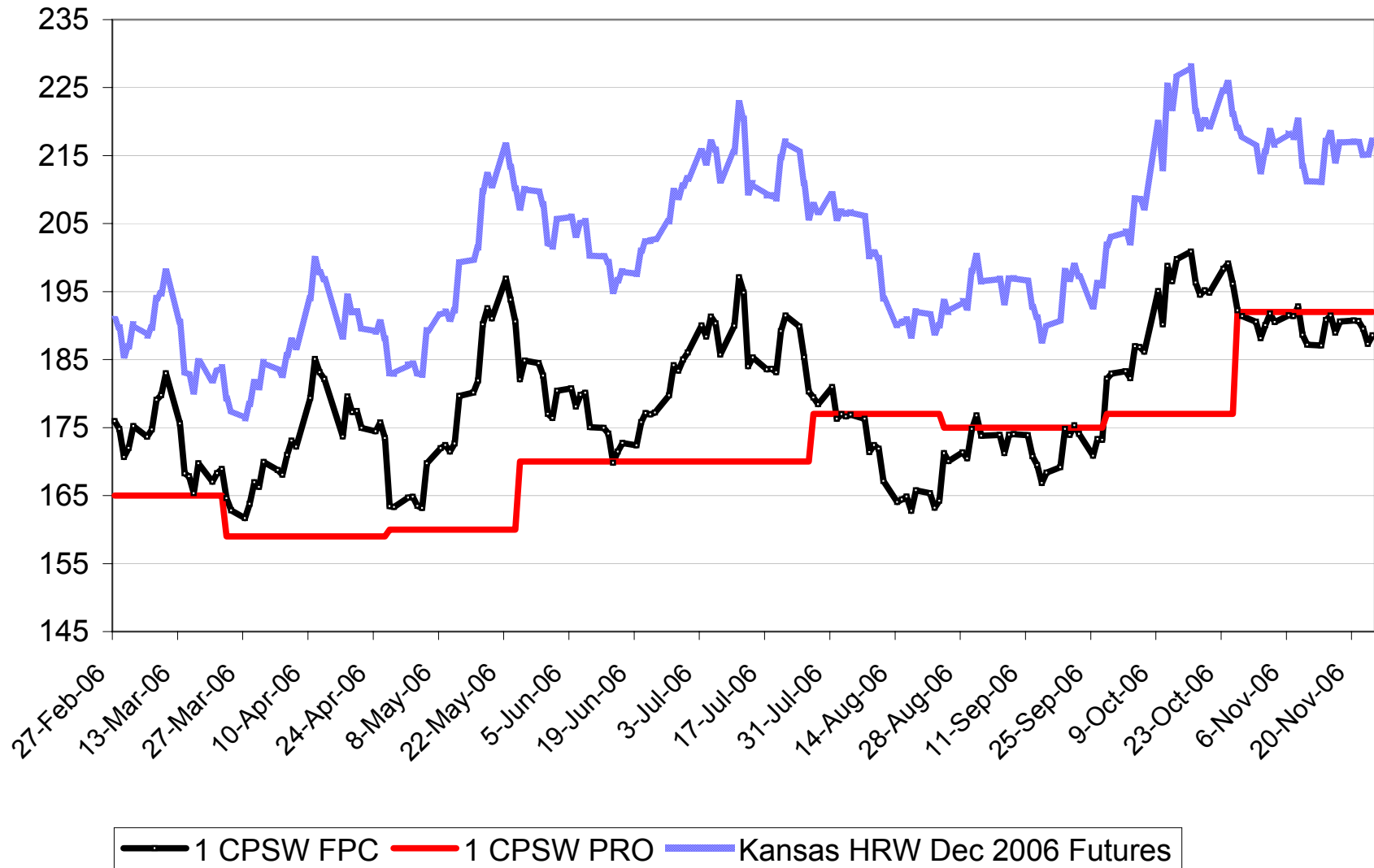
2006-07 No. 1 CPSR Fixed Price

\$Cdn/tonne



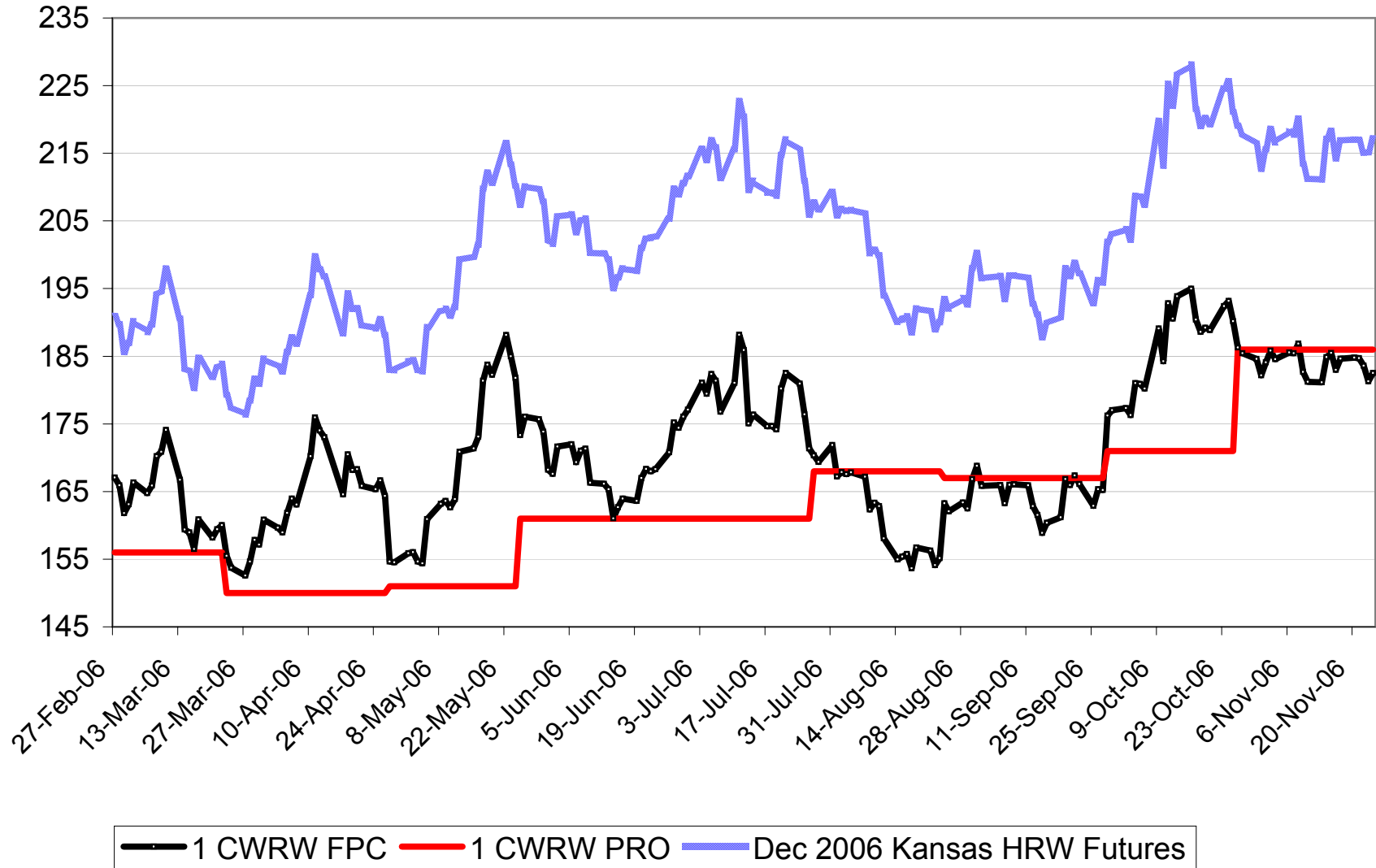
2006-07 No. 1 CPSW Fixed Price

\$Cdn/tonne



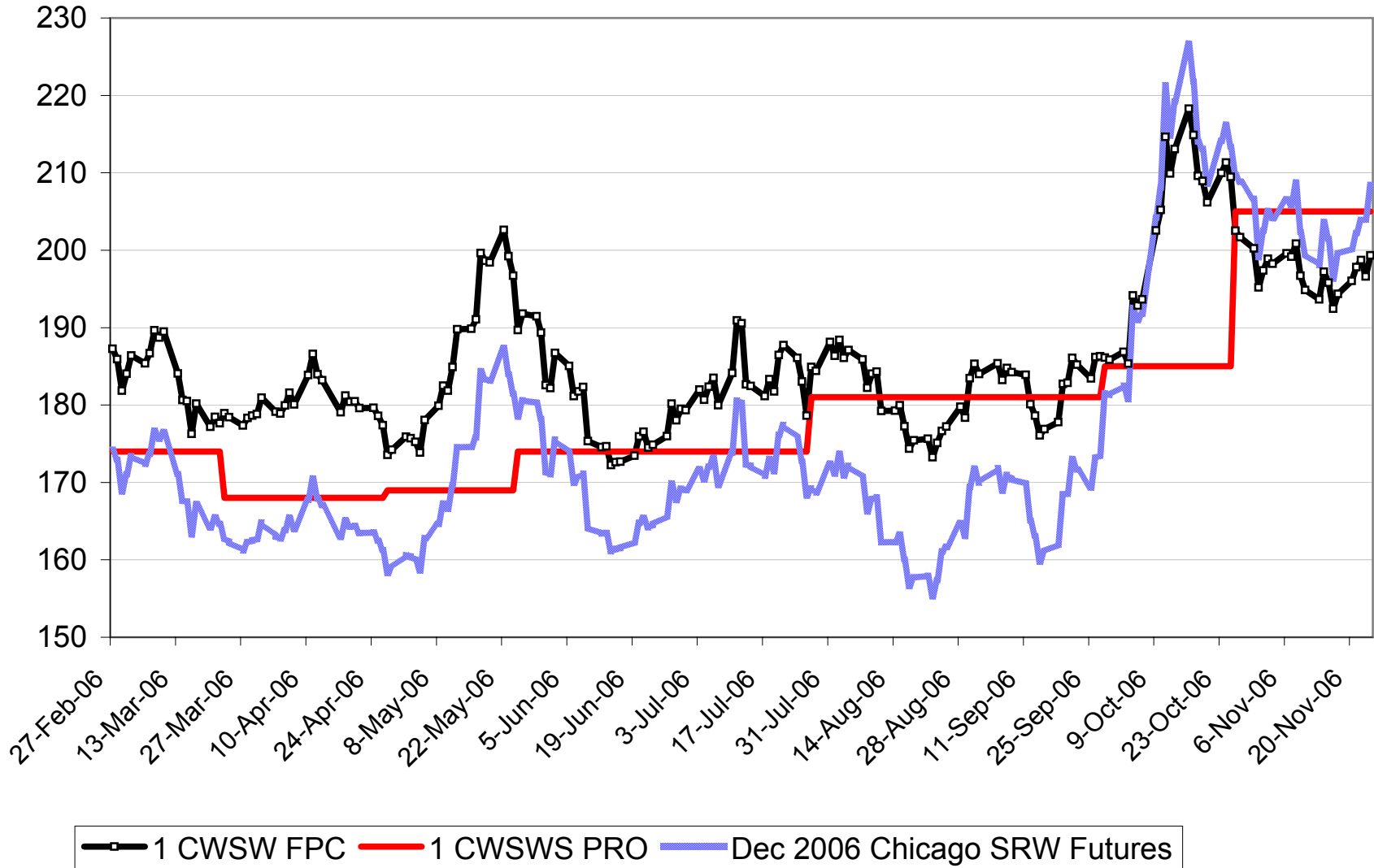
2006-07 No. 1 CWRW Fixed Price

\$Cdn/tonne



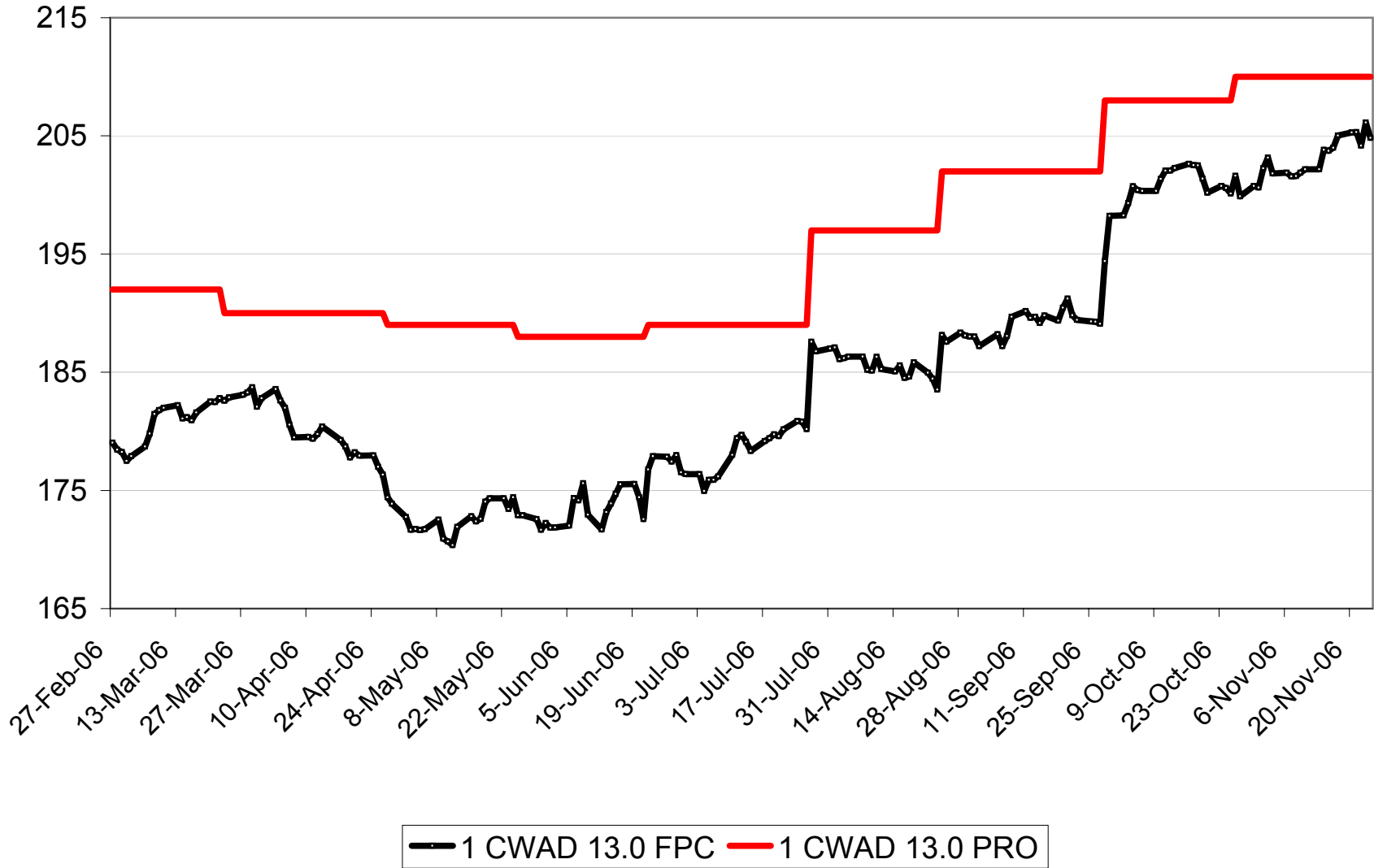
2006-07 No. 1 CWSWS Fixed Price

\$Cdn/tonne



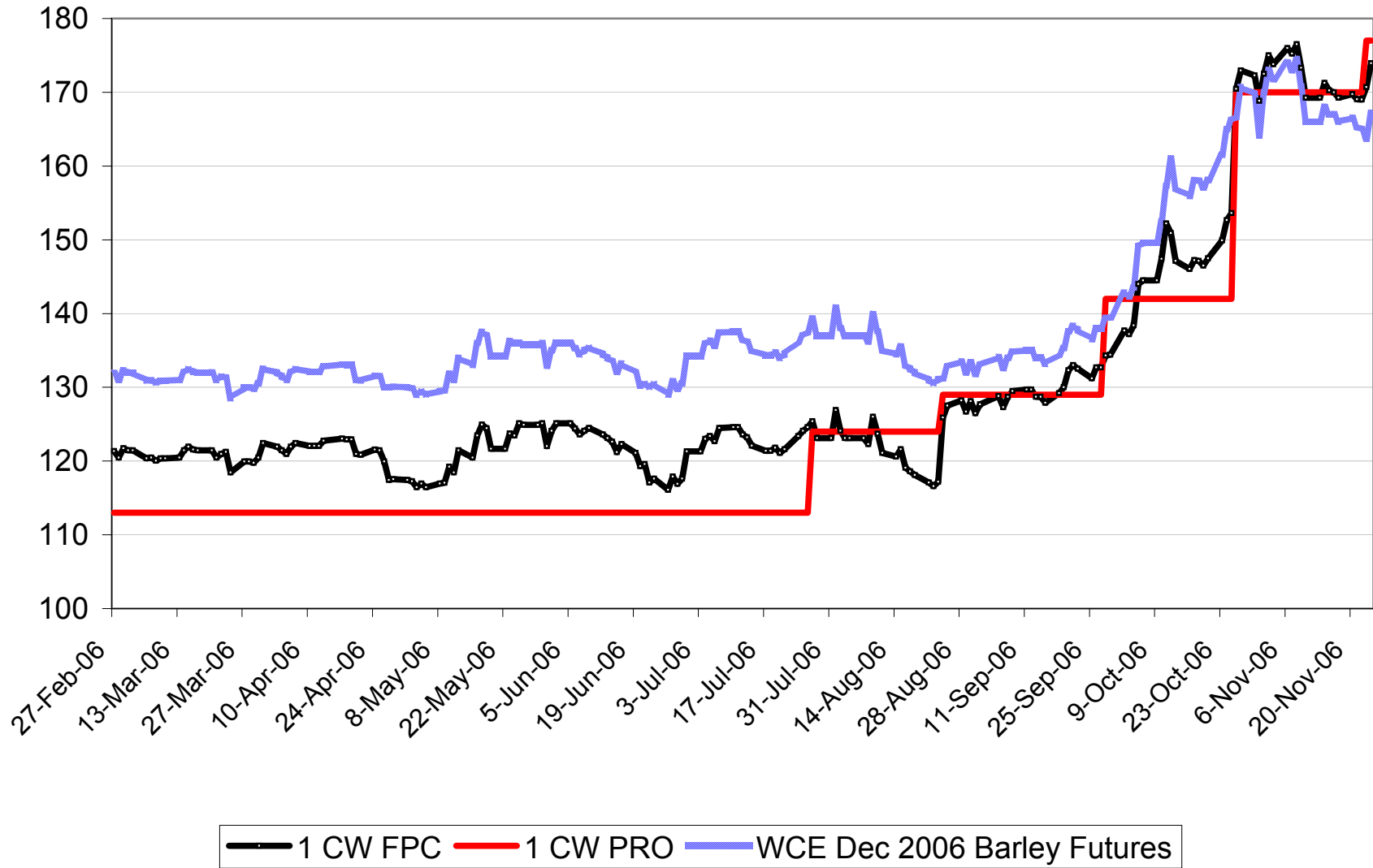
2006-07 No. 1 CWAD 13.0 Fixed Price

\$Cdn/tonne



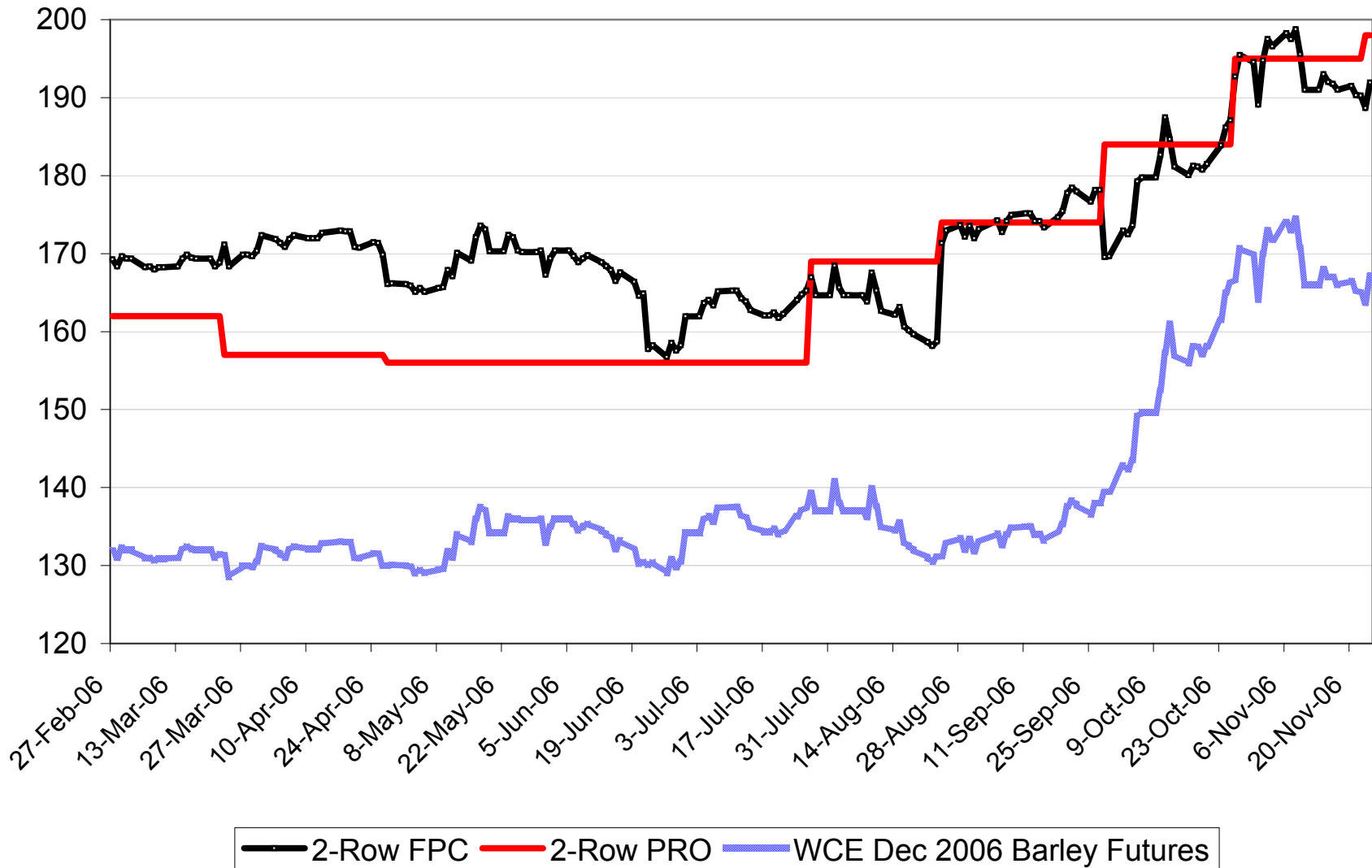
2006-07 No. 1 CW Barley Fixed Price

\$Cdn/tonne



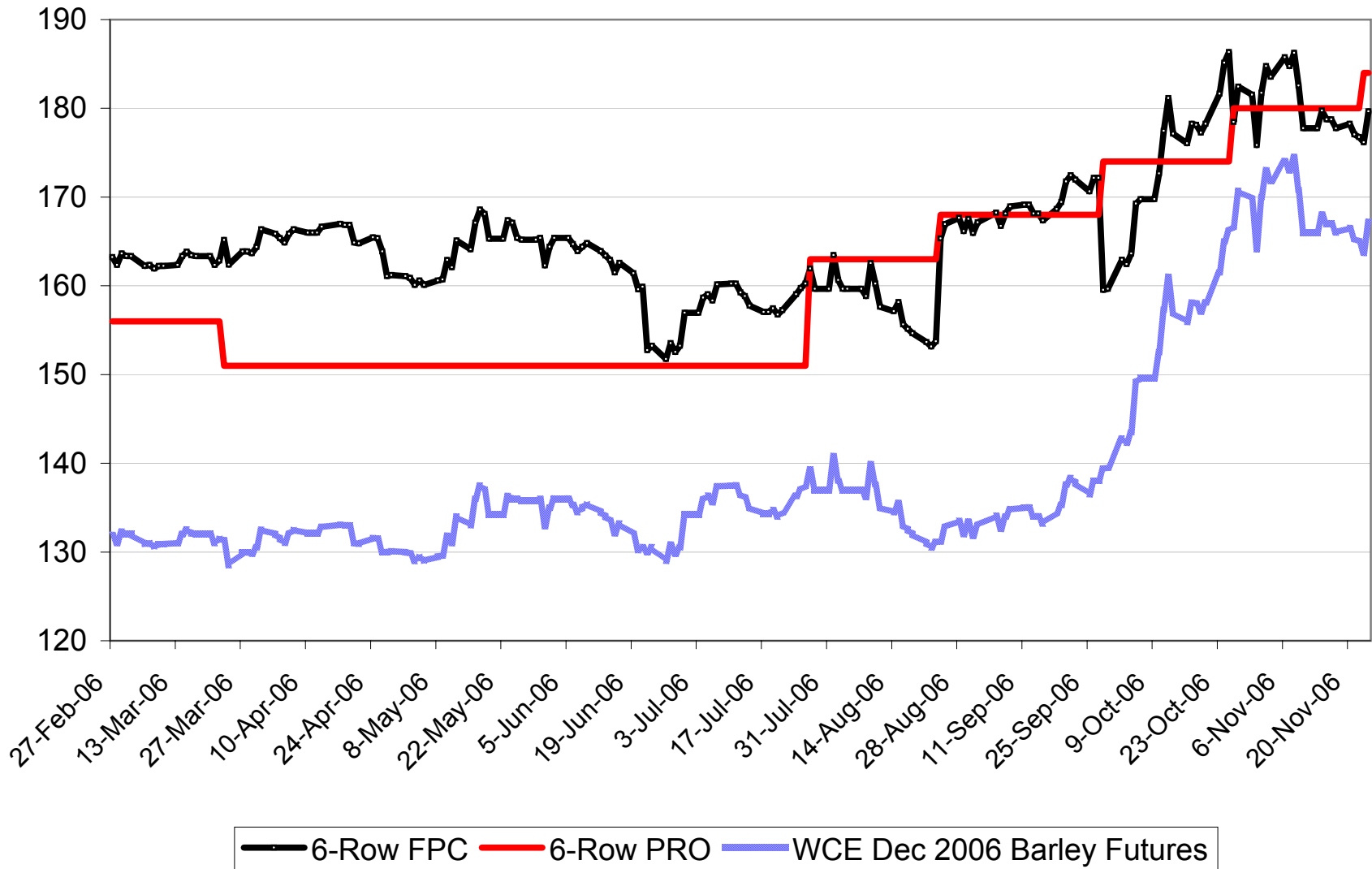
2006-07 Std. Sel. Two-Row Fixed Price

\$Cdn/tonne



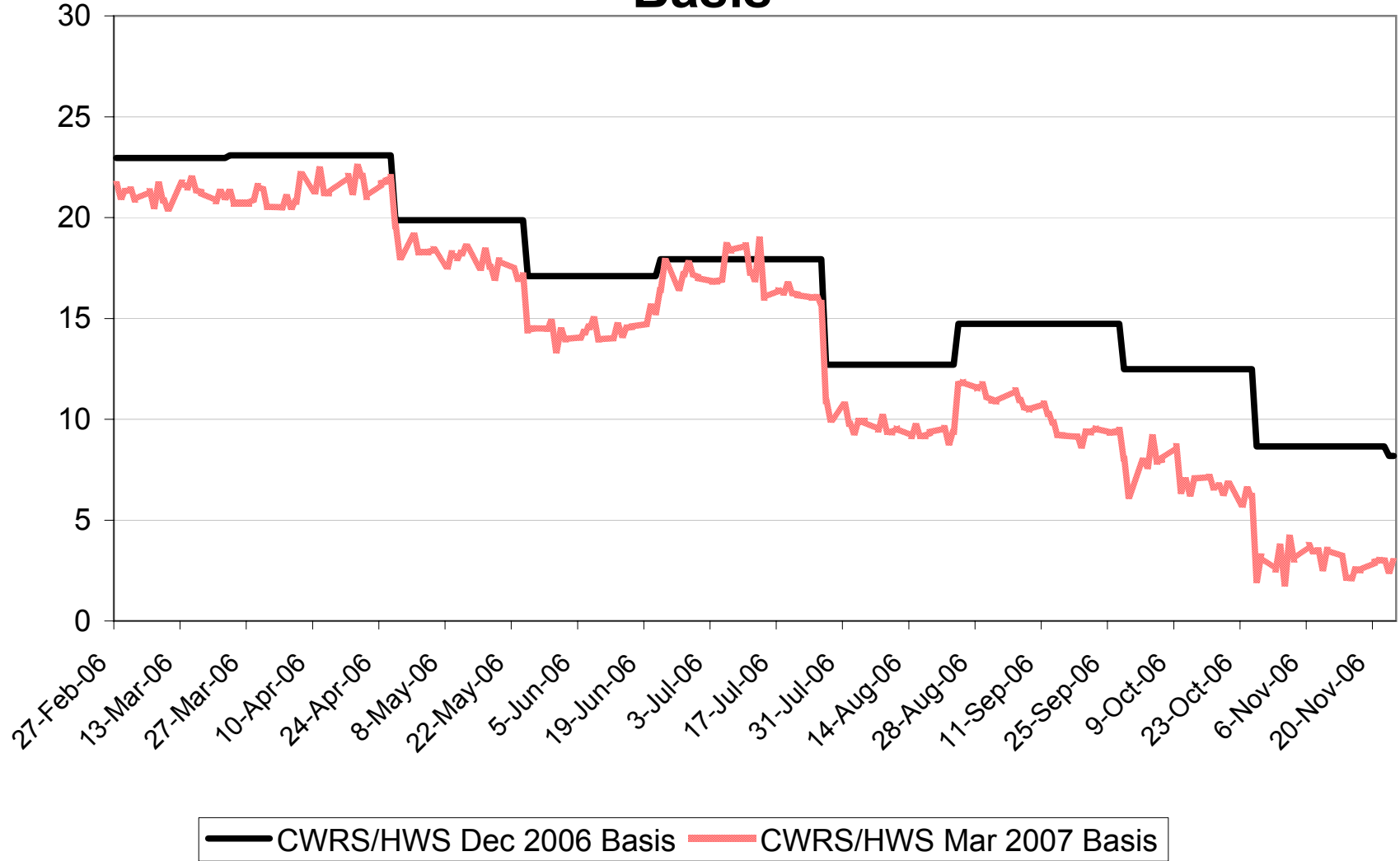
2006-07 Std Sel Six-Row Fixed Price

\$Cdn/tonne



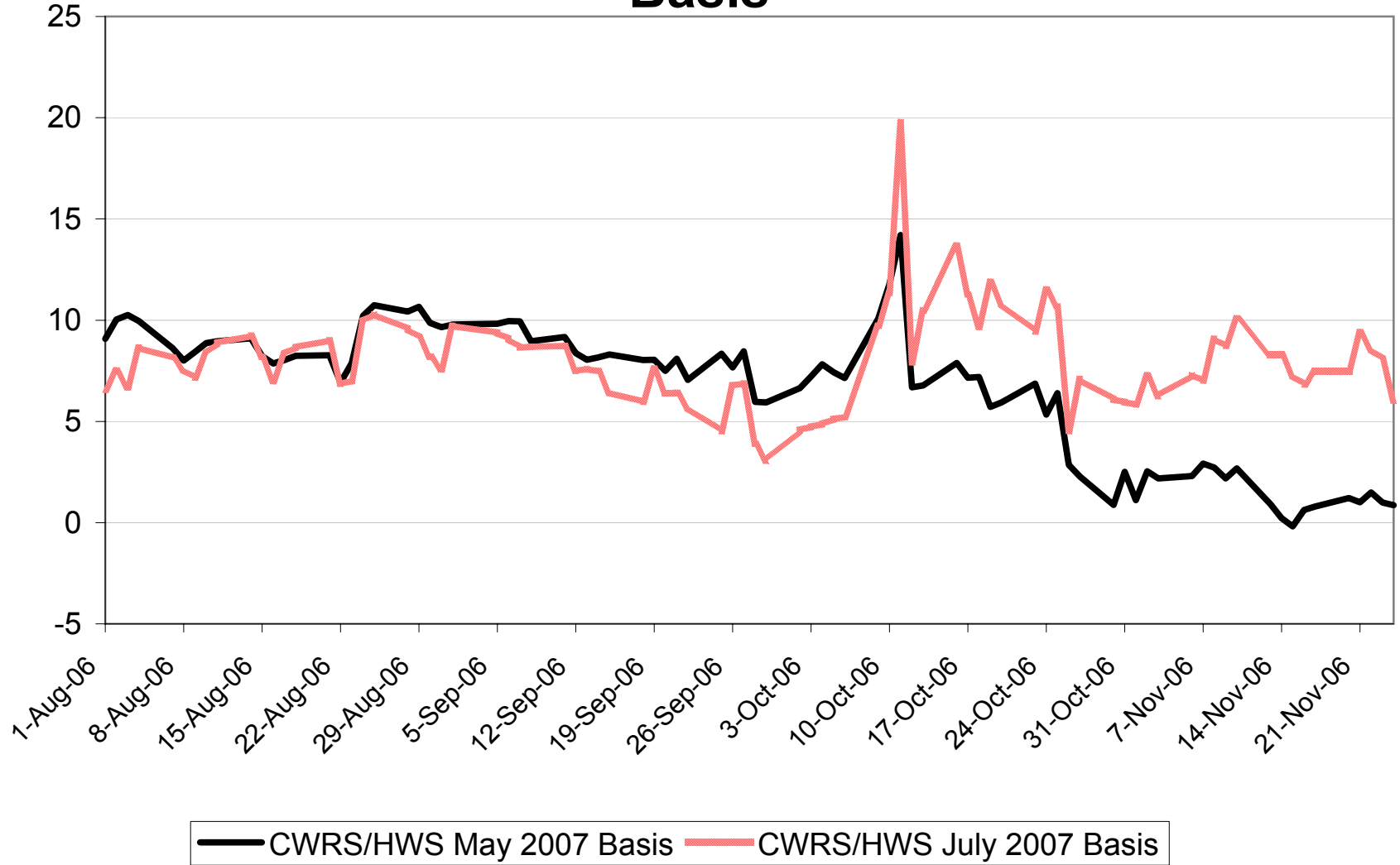
2006-07 No. 1 CWRs/HWS 13.5 Adjusted Basis

\$Cdn/tonne



2006-07 No. 1 CWRs/HWS 13.5 Adjusted Basis

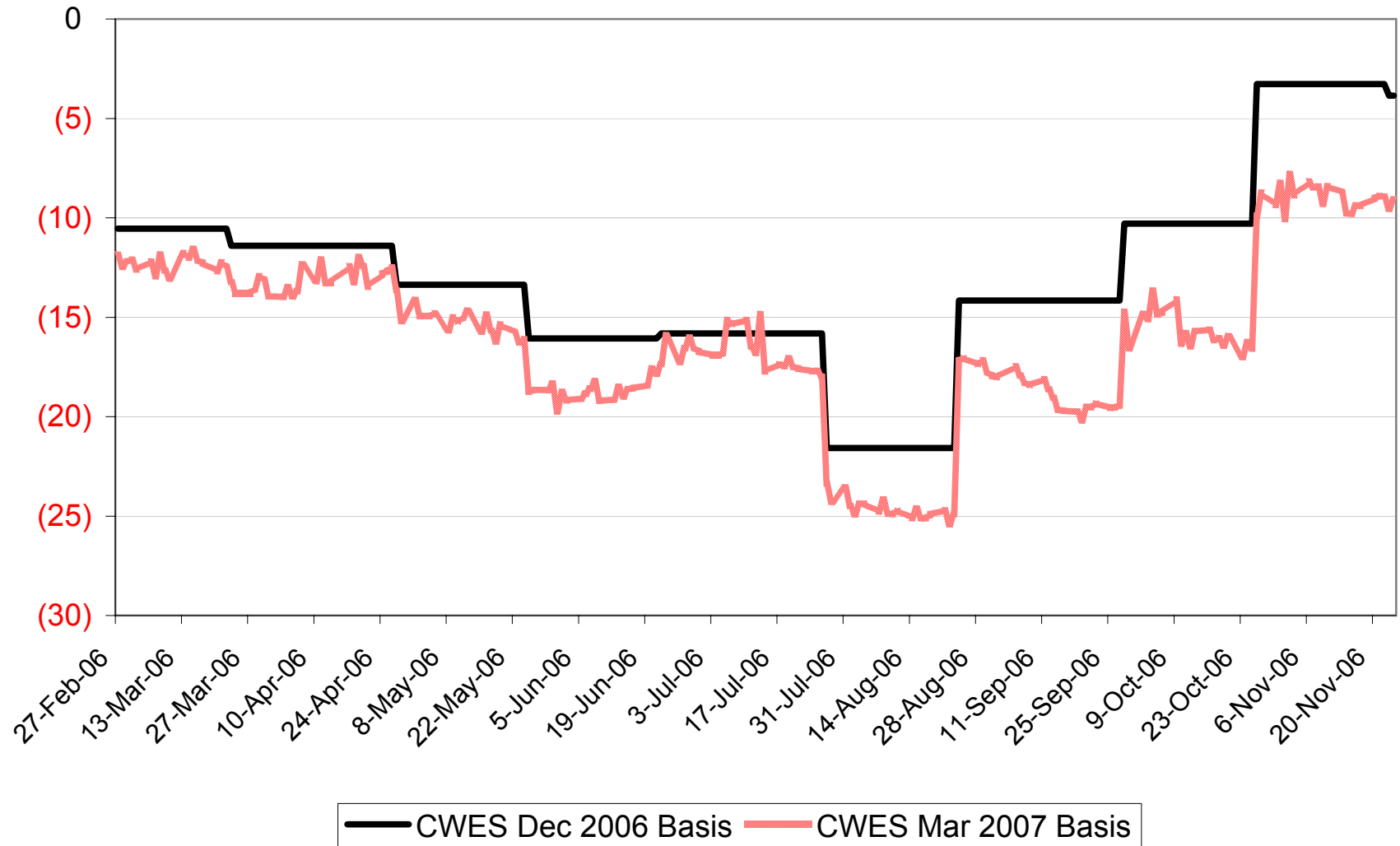
\$Cdn/tonne



2006-07 No. 1 CWES Adjusted Basis

\$ per tonne below Minn HRS Futures

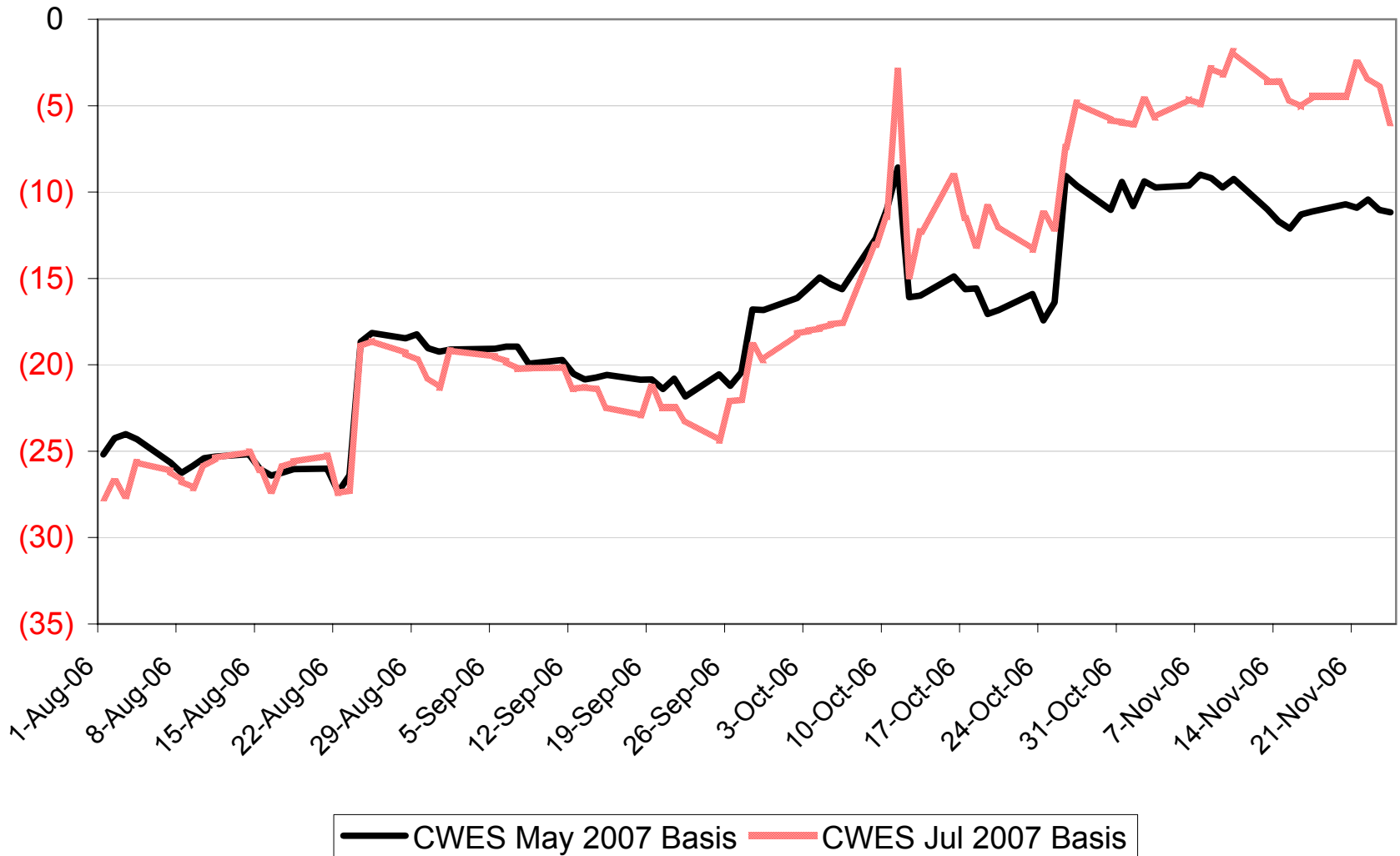
\$Cdn/tonne



2006-07 No. 1 CWES Adjusted Basis

\$ per tonne below Minn HRS Futures

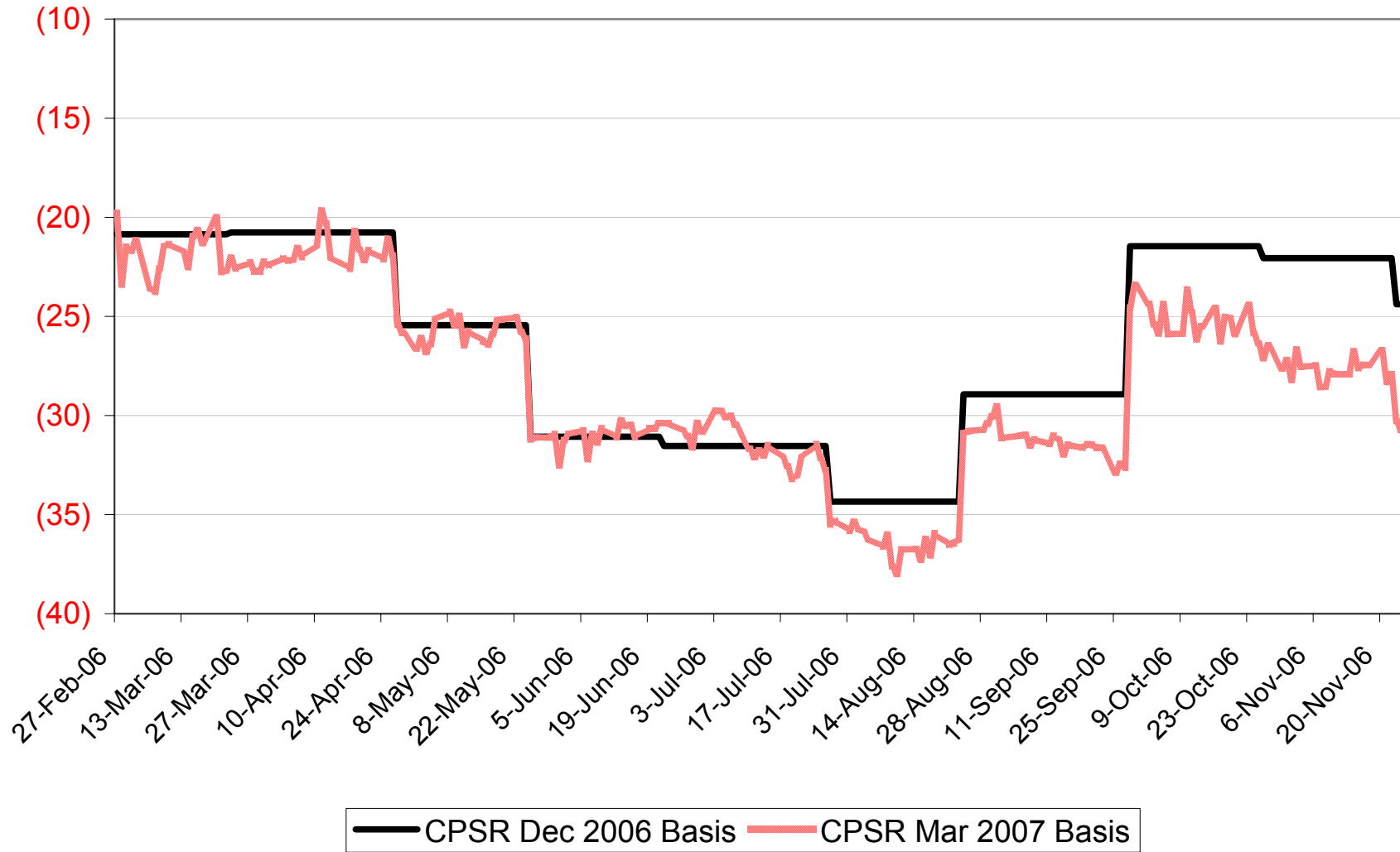
\$Cdn/tonne



2006-07 No. 1 CPSR Adjusted Basis

\$ per tonne below Kansas HRW Futures

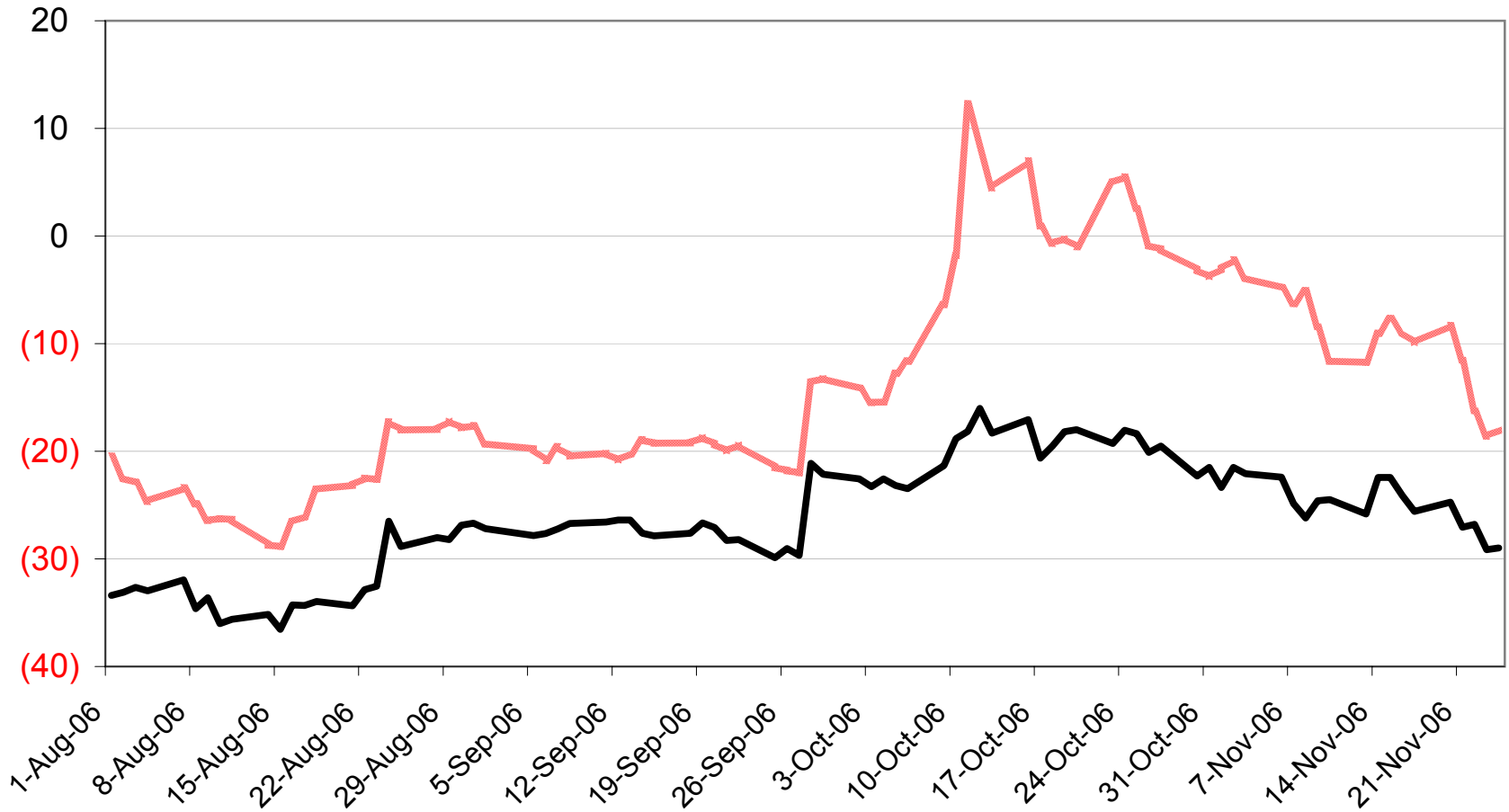
\$Cdn/tonne



2006-07 No. 1 CPSR Adjusted Basis

\$ per tonne below Kansas HRW Futures

\$Cdn/tonne

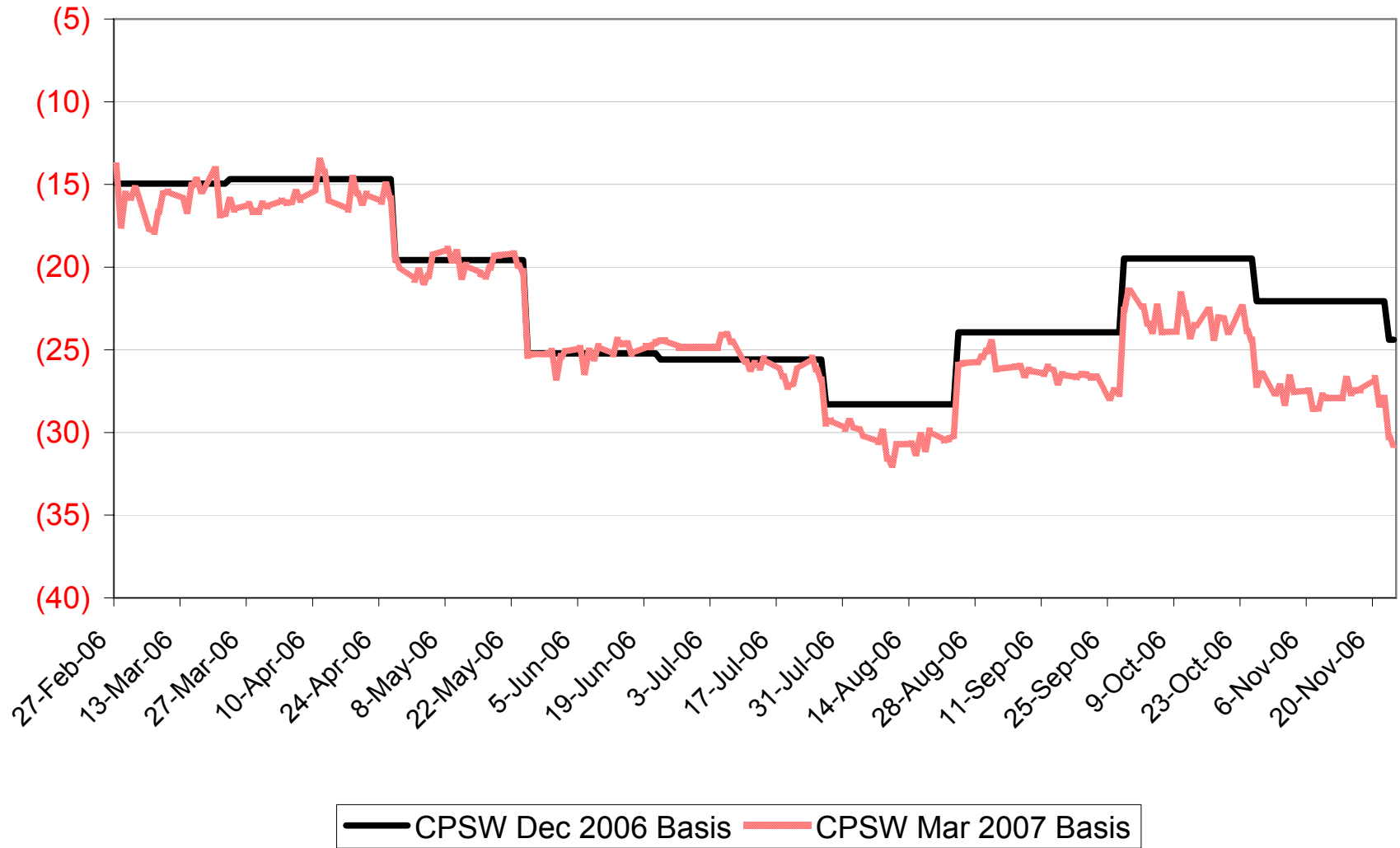


— CPSR May 2007 Basis — CPSR Jul 2007 Basis

2006-07 No. 1 CPSW Adjusted Basis

\$ per tonne below Kansas HRW Futures

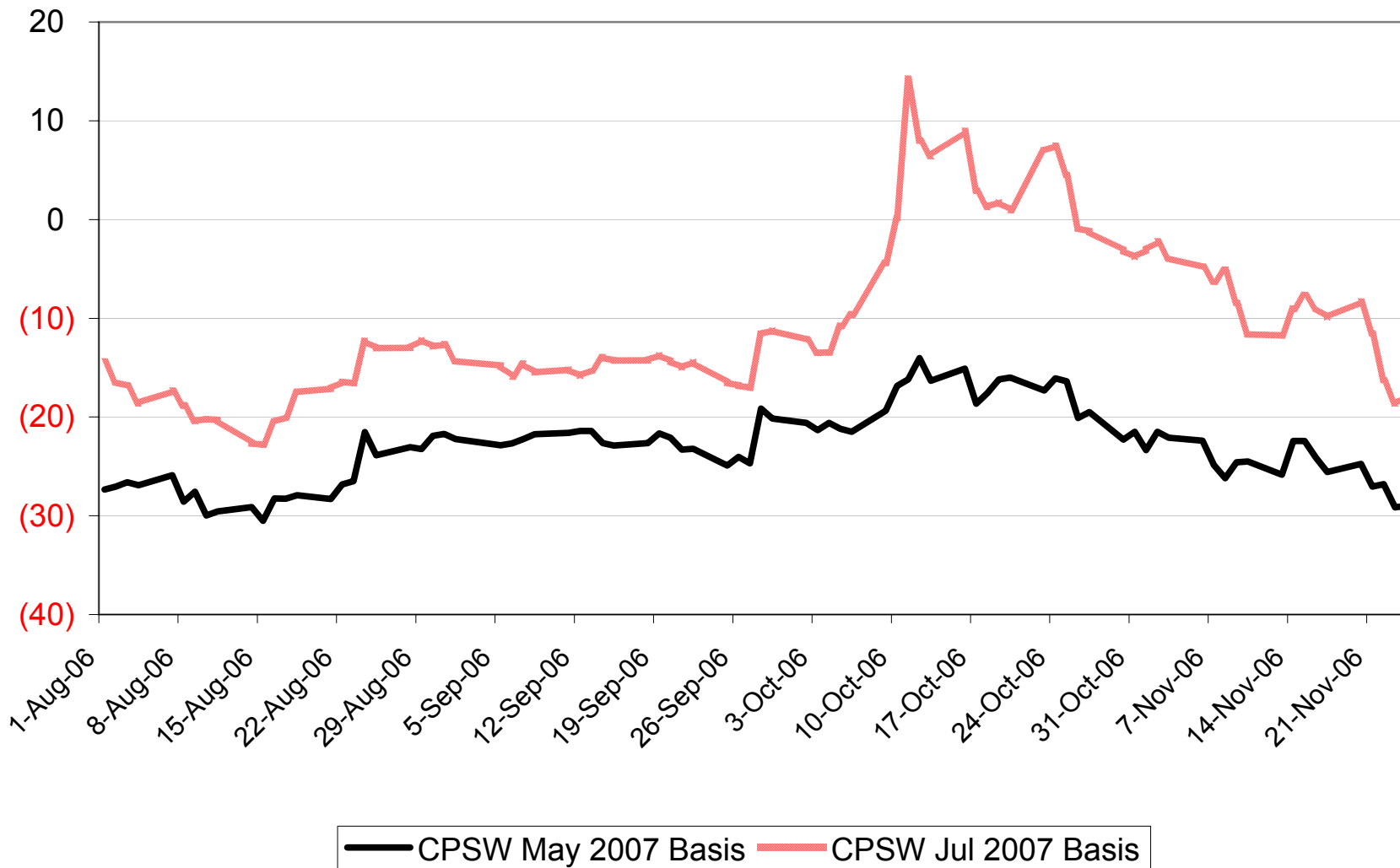
\$Cdn/tonne



2006-07 No. 1 CPSW Adjusted Basis

\$ per tonne below Kansas HRW Futures

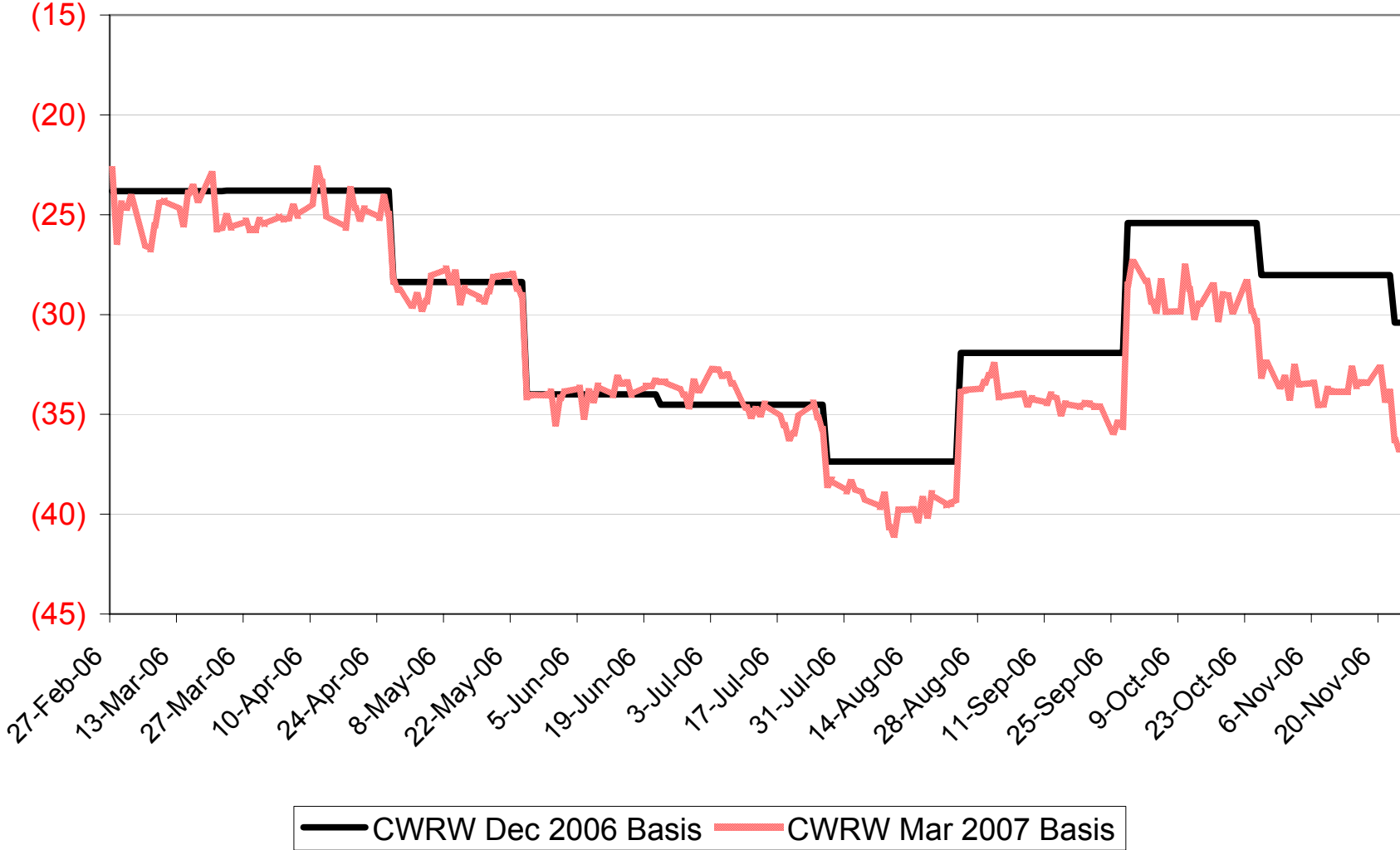
\$Cdn/tonne



2006-07 No. 1 CWRW Adjusted Basis

\$ per tonne below Kansas HRW Futures

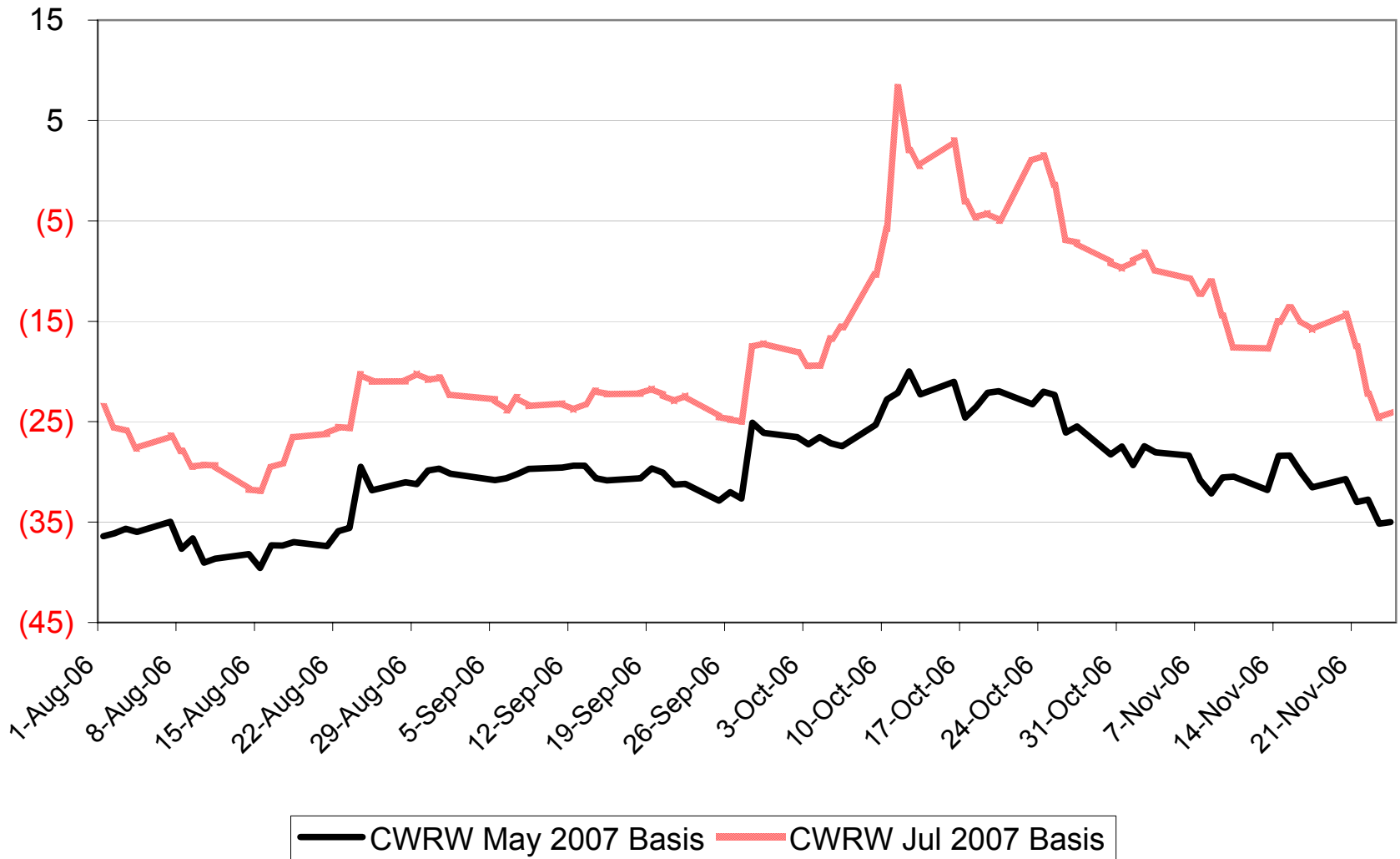
\$Cdn/tonne



2006-07 No. 1 CWRW Adjusted Basis

\$ per tonne below Kansas HRW Futures

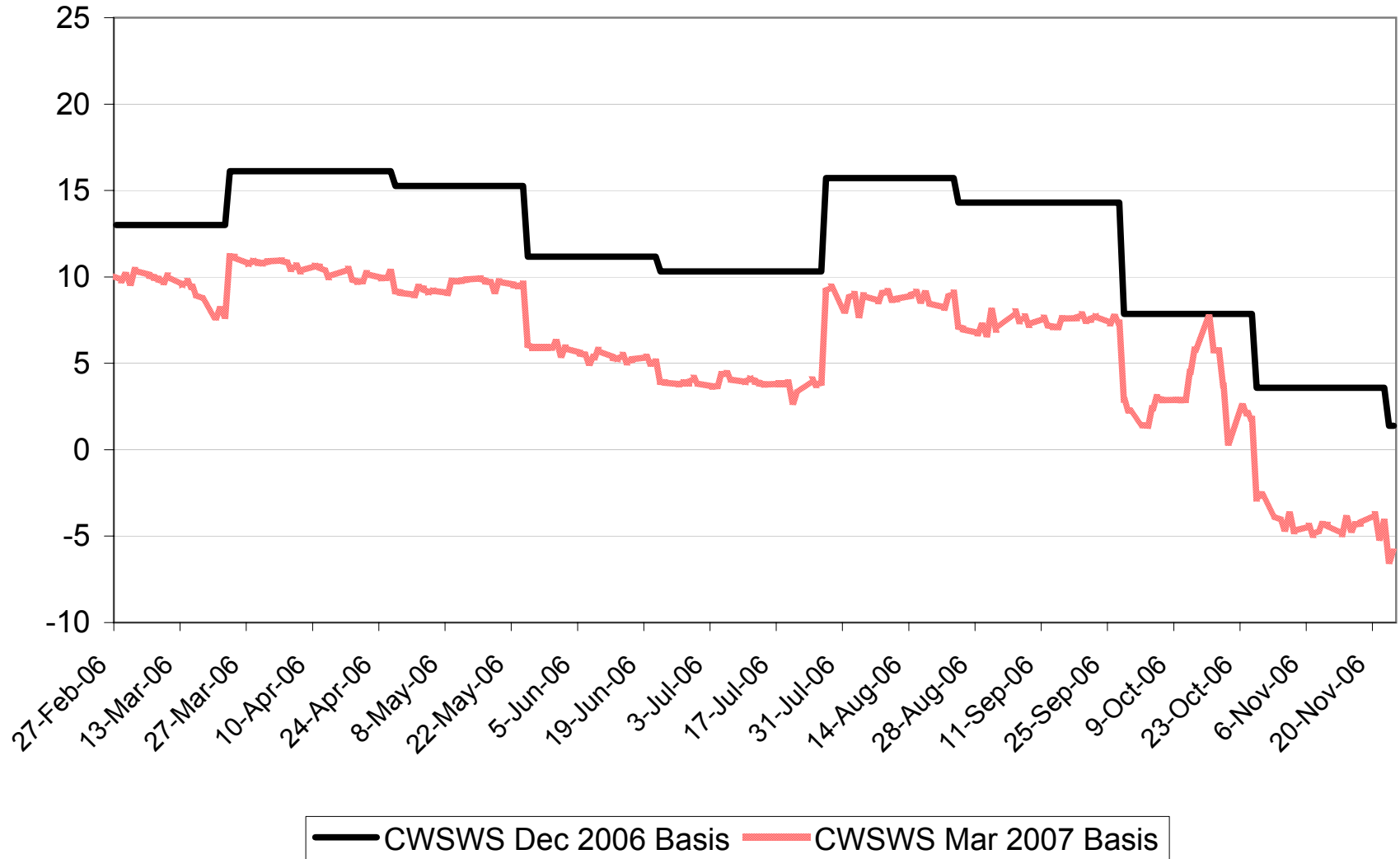
\$Cdn/tonne



2006-07 No. 1 CWSWS Basis Levels

\$ per tonne above/below Chicago SRW Futures

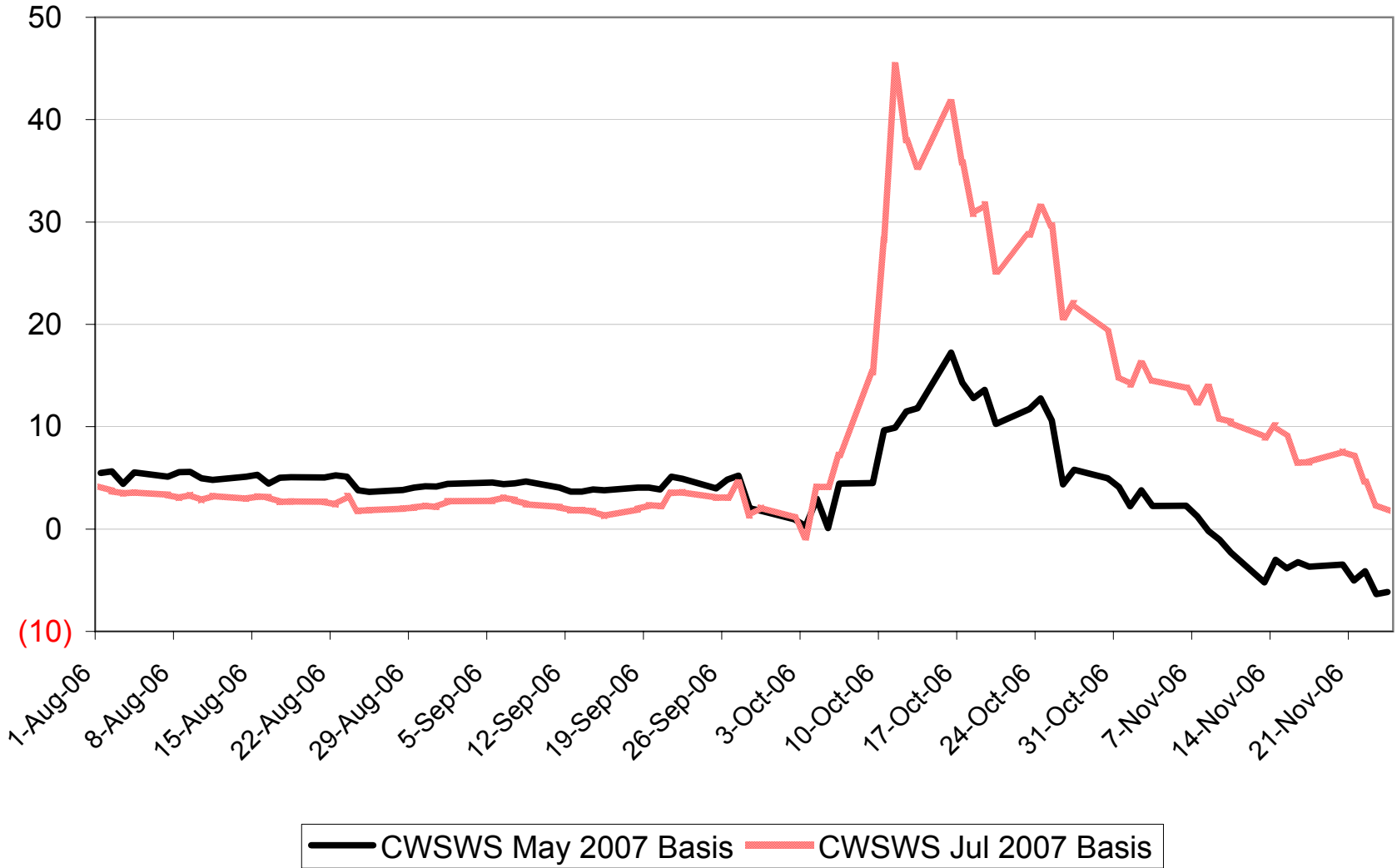
\$Cdn/tonne



2006-07 No. 1 CWSWS Basis Levels

\$ per tonne above/below Chicago SRW Futures

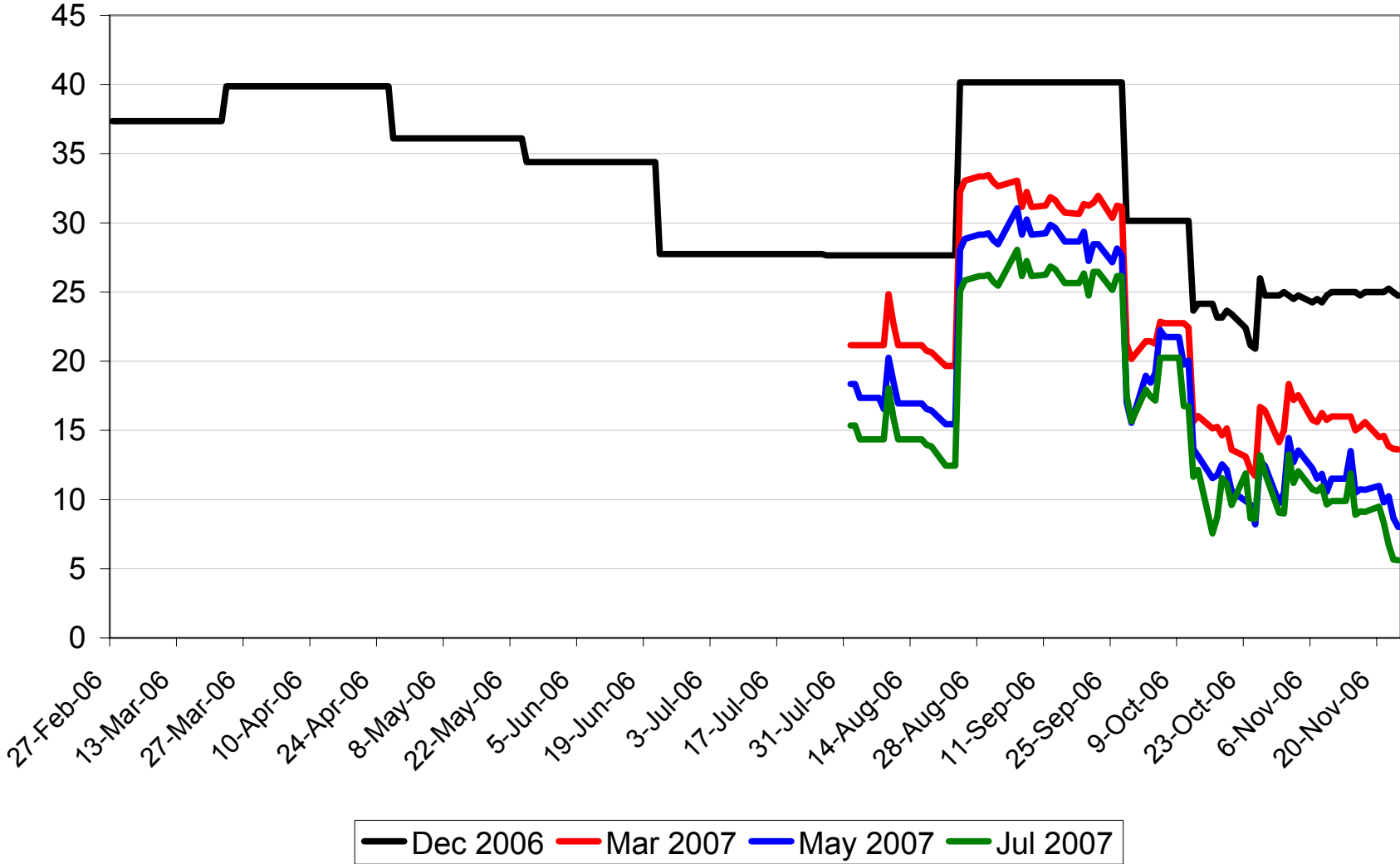
\$Cdn/tonne



2006-07 Std Sel Two-Row Basis Levels

\$ per tonne above WCE W. Barley Futures

\$Cdn/tonne



2006-07 Std Sel Six-Row Basis Levels

\$ per tonne above/below WCE W. Barley Futures

\$Cdn/tonne

