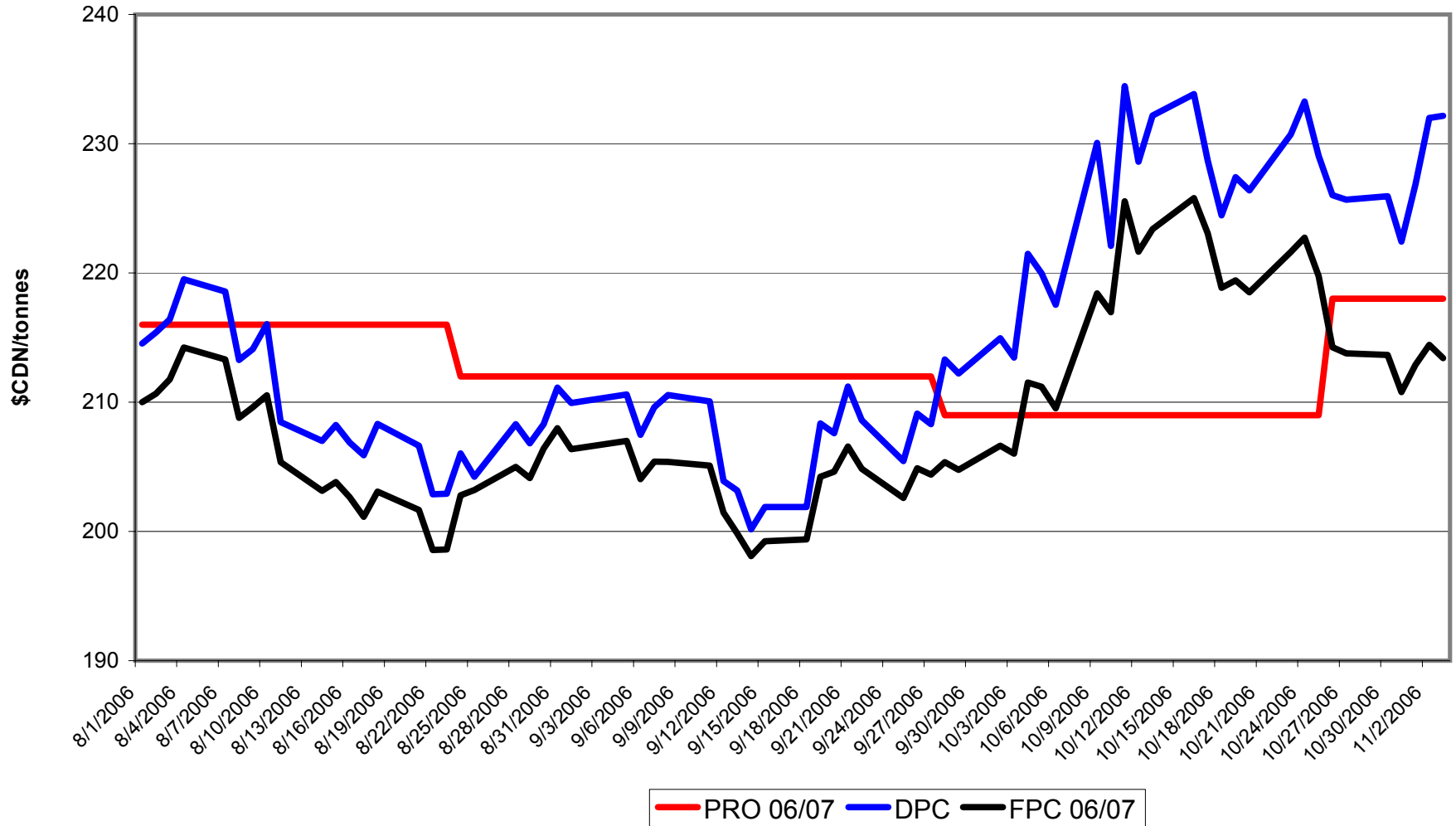
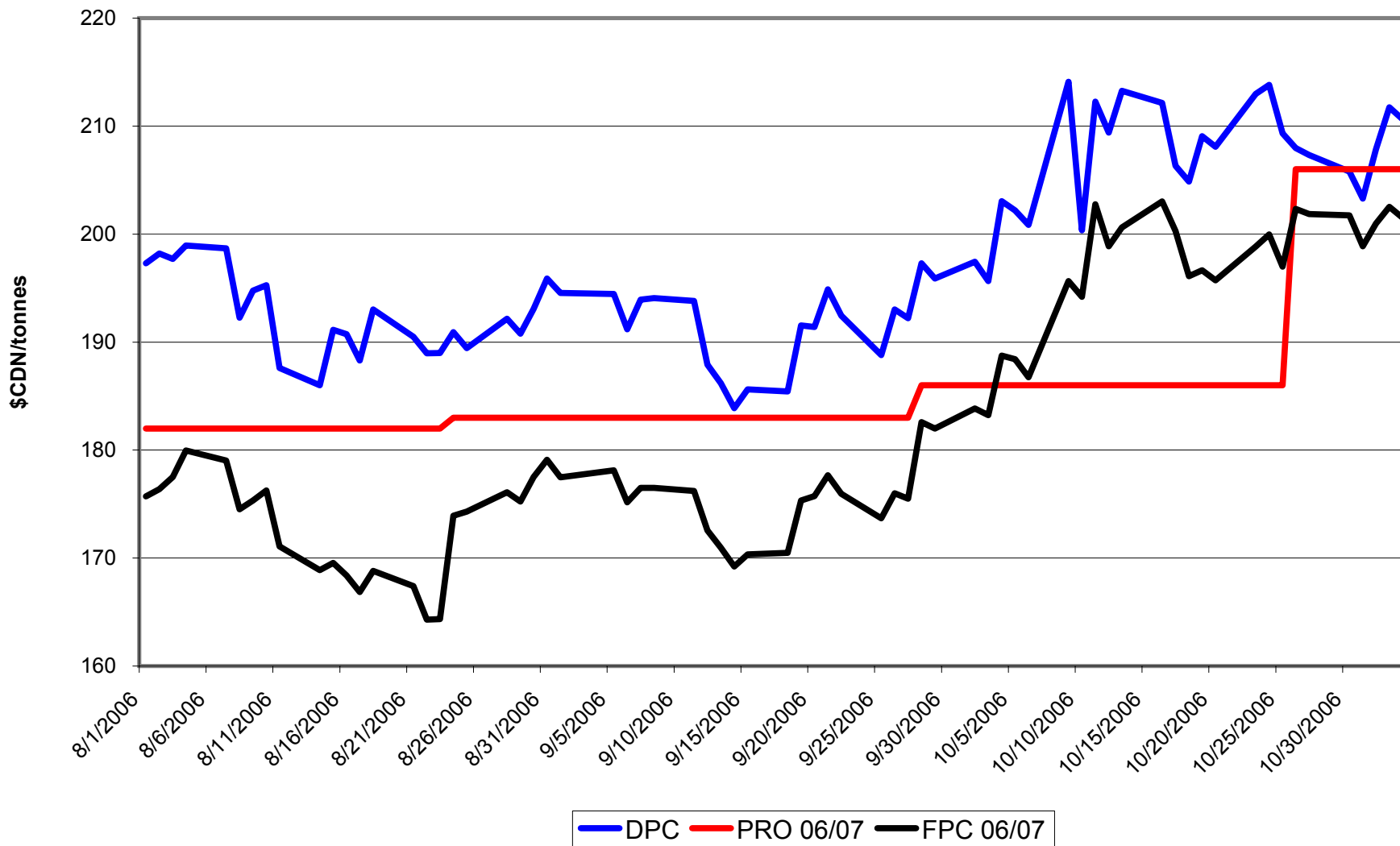


No. 1 CWRS/CWHWS 13.5 Daily Comparison of PRO, FPC & DPC

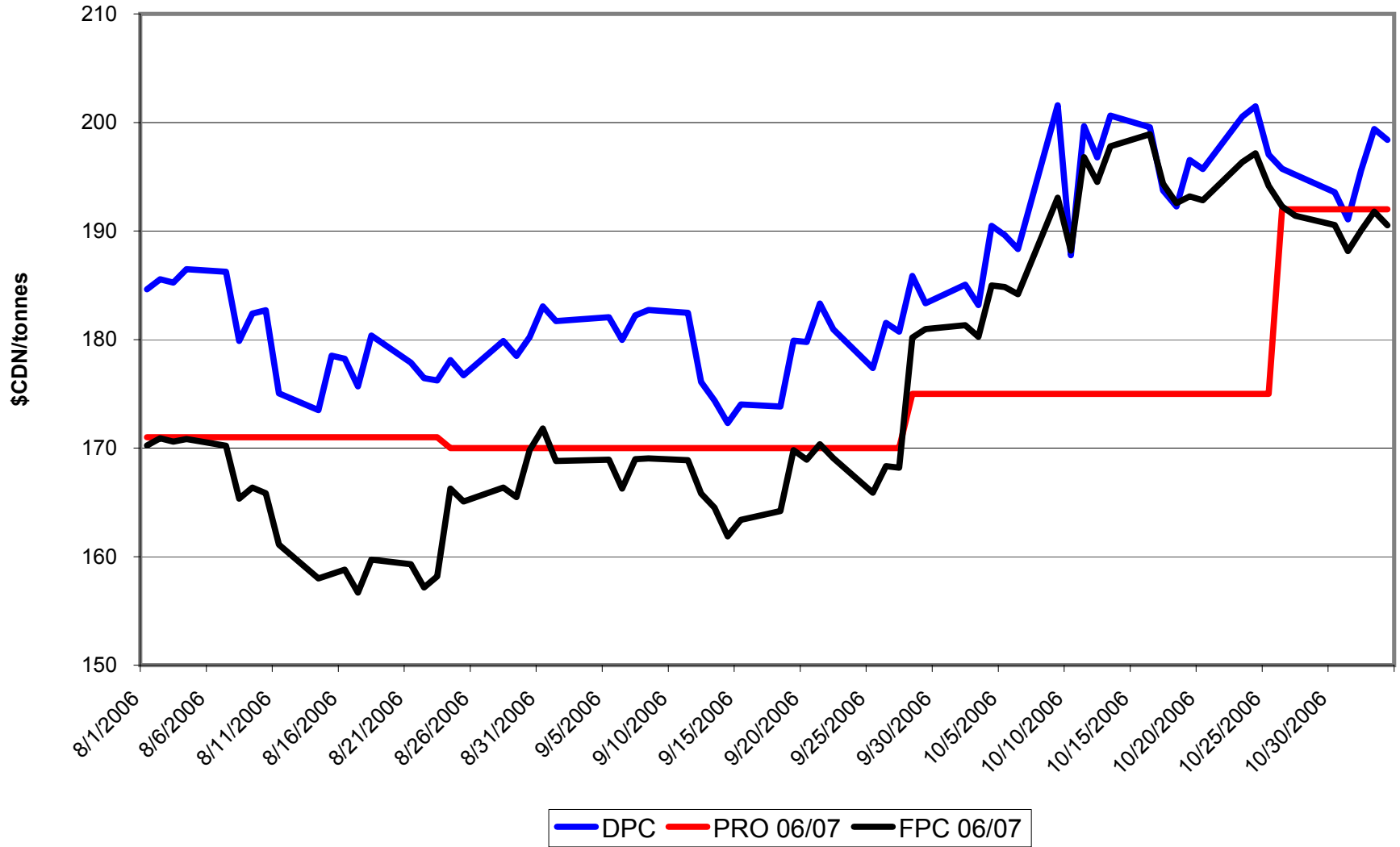
values for 2006-07 crop year



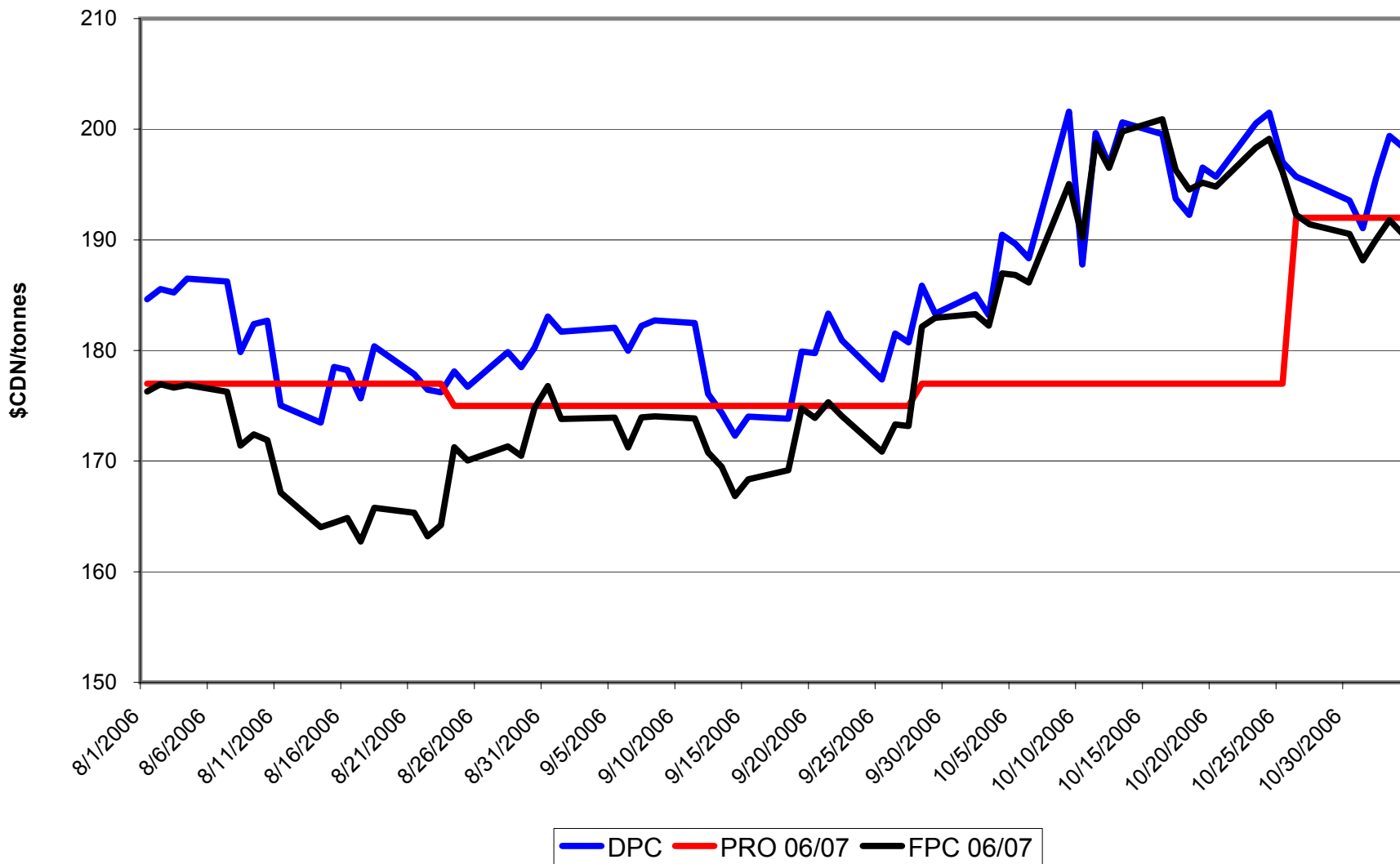
No. 1 CWES Daily Comparison of PRO, FPC & DPC values for 2006-07 crop year



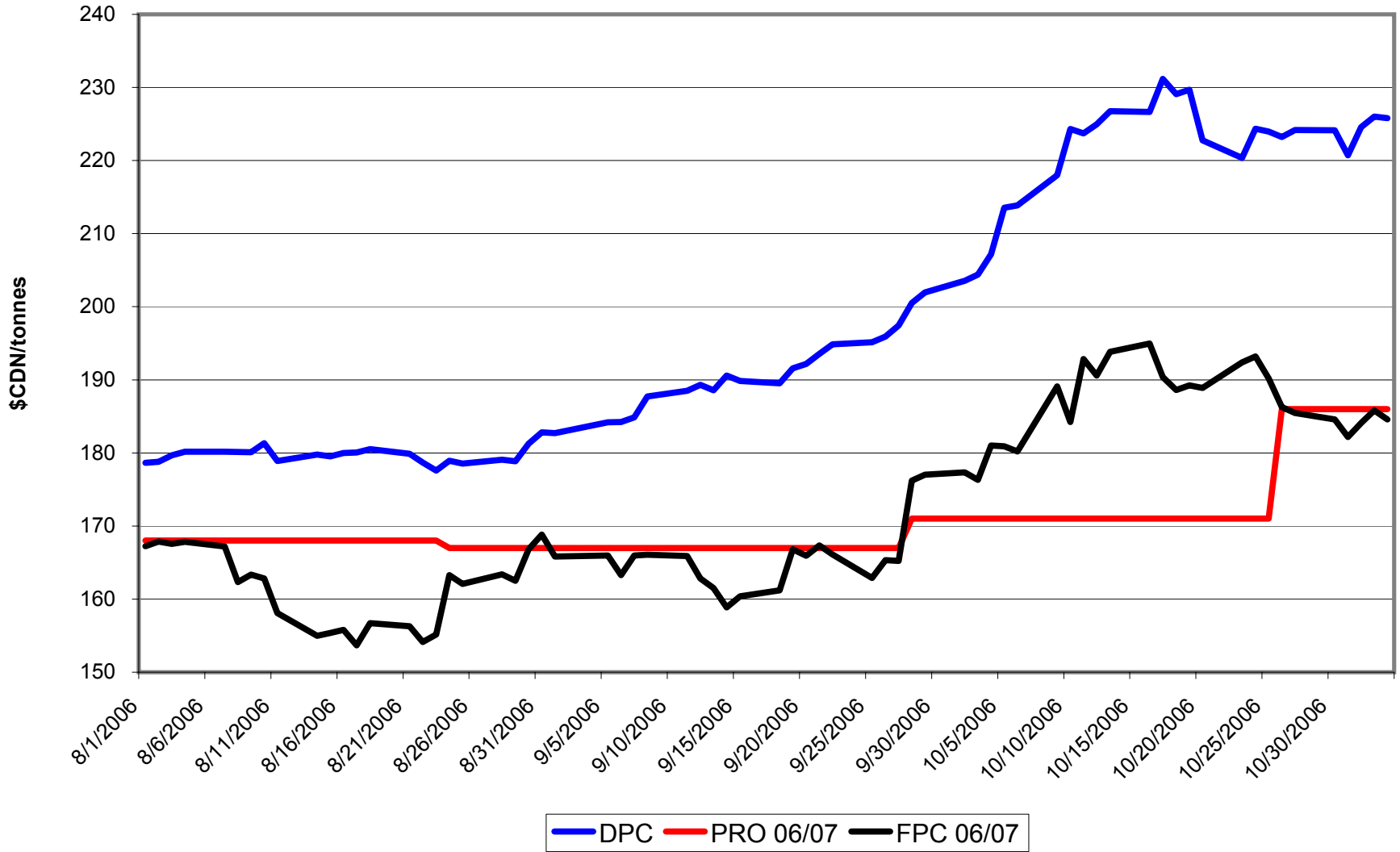
No. 1 CPSR Daily Comparison of PRO, FPC & DPC values for 2006-07 crop year



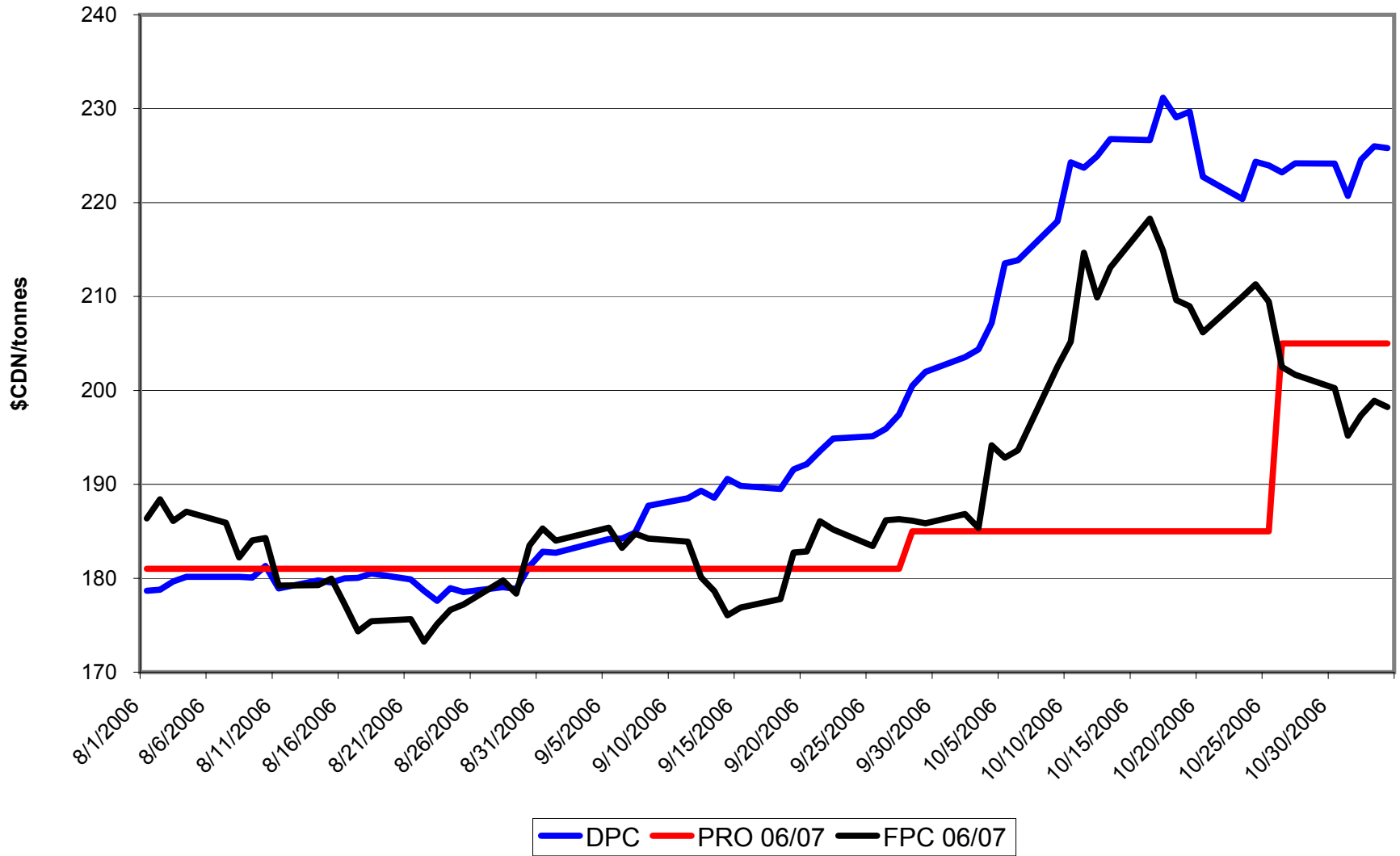
No. 1 CPSW Daily Comparison of PRO, FPC & DPC values for 2006-07 crop year



No. 1 CWRW Daily Comparison of PRO, FPC & DPC values for 2006-07 crop year

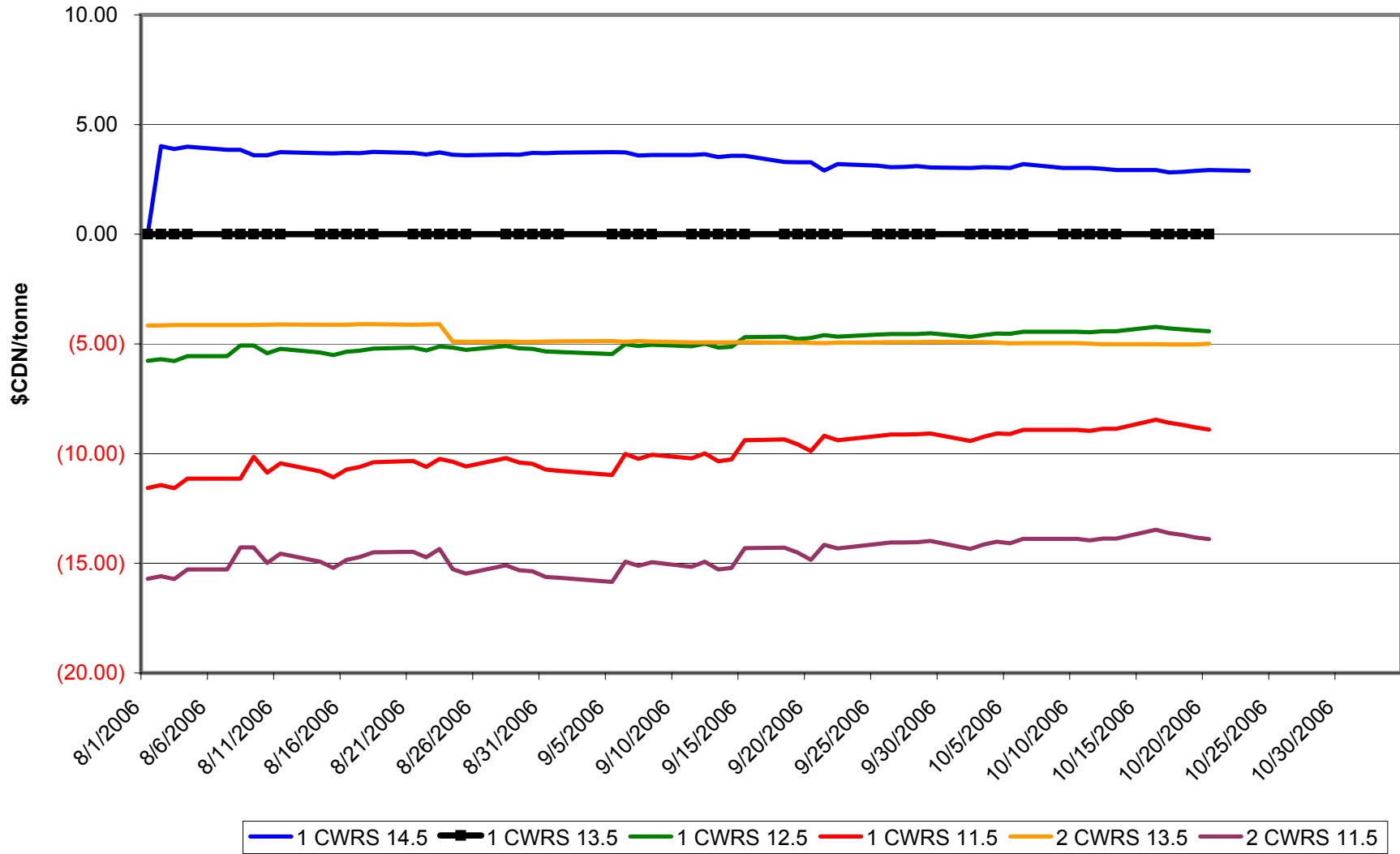


No. 1 CWSWS Daily Comparison of PRO, FPC & DPC values for 2006-07 crop year



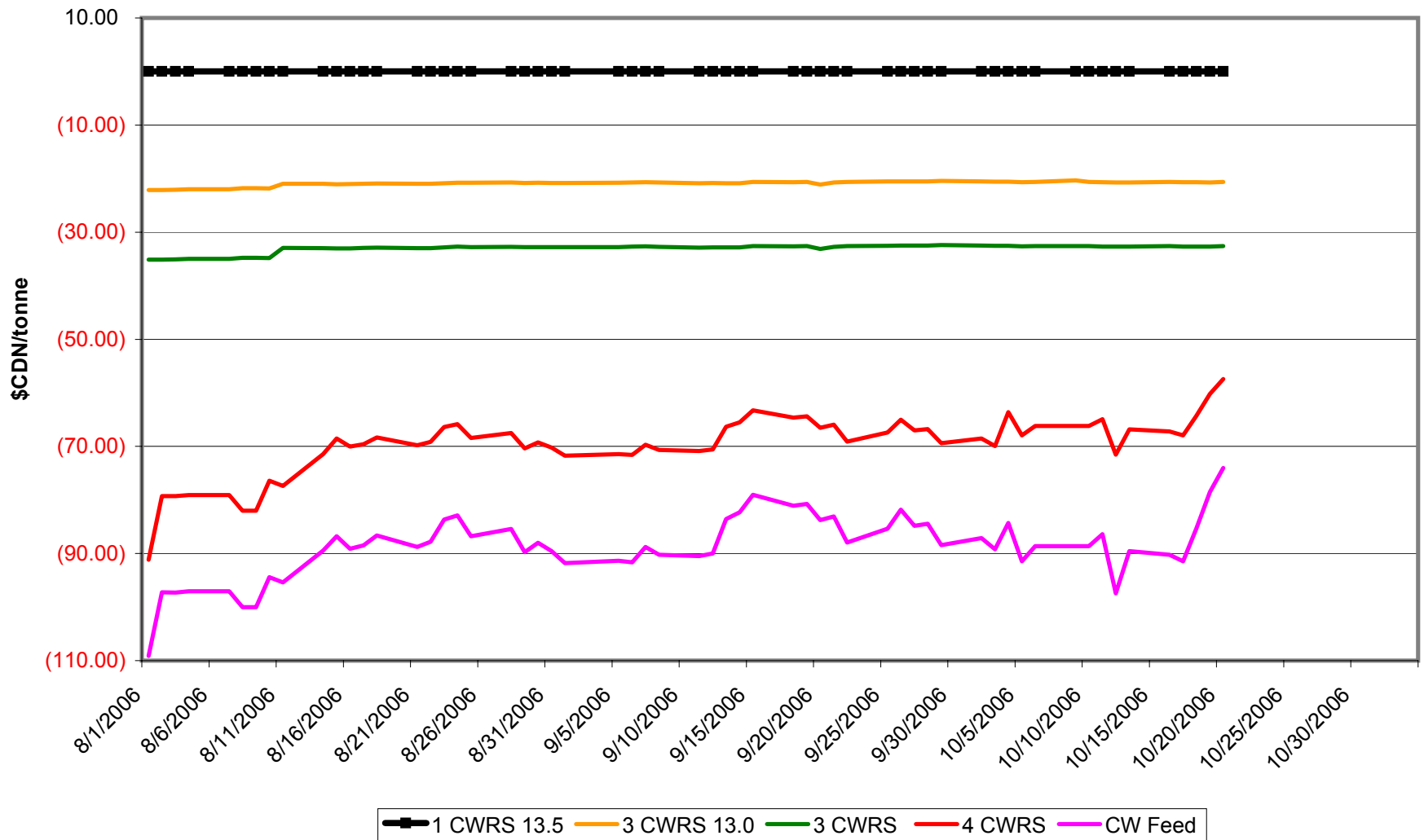
2006/07 DPC Spreads - CWRS No. 1 & No. 2

(reference/base grade of No. 1 CWRS 13.5%)



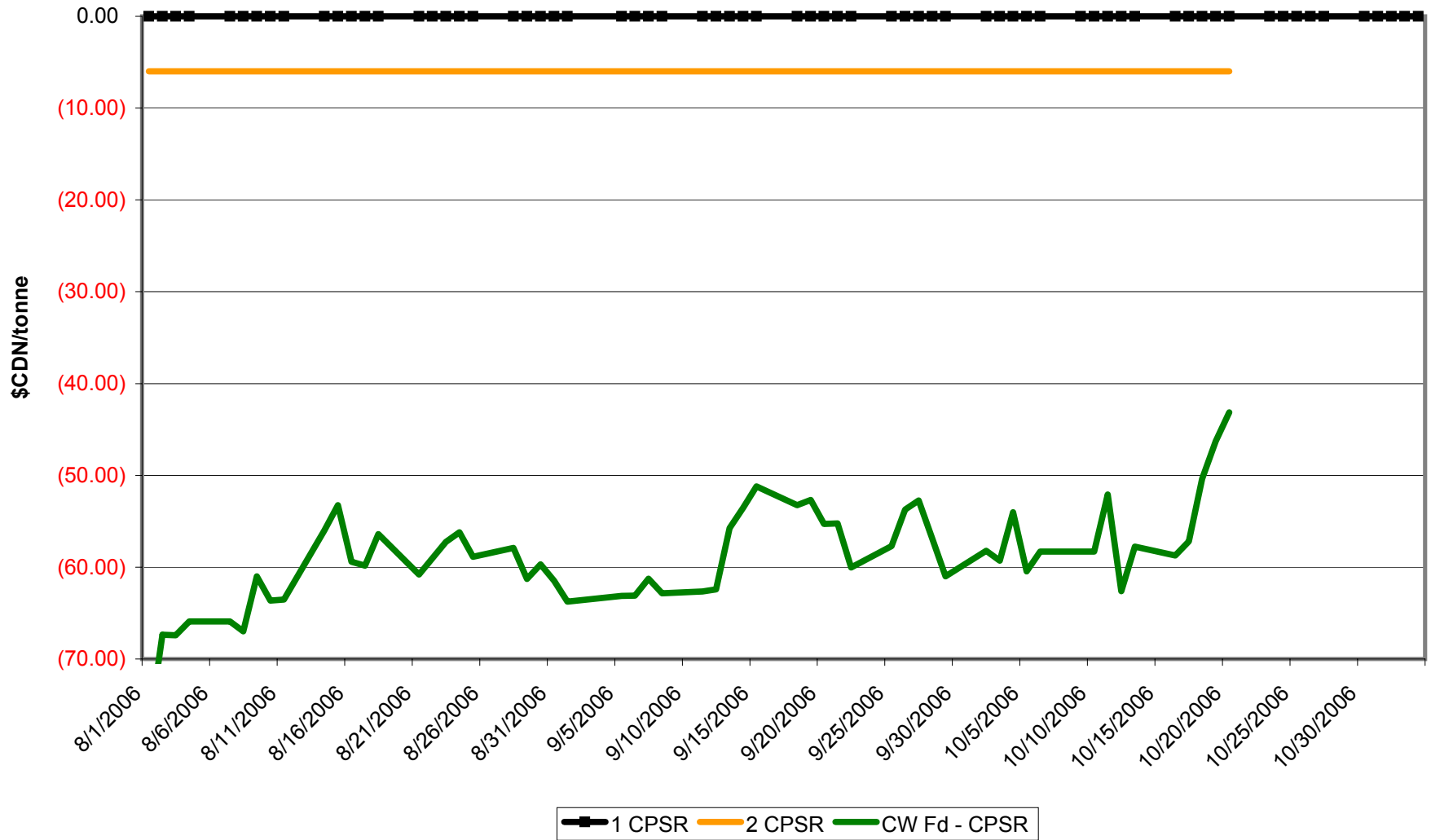
2006/07 DPC Spreads - CWRS No. 3, No. 4 & CW FD

(reference/base grade of No. 1 CWRS 13.5%)



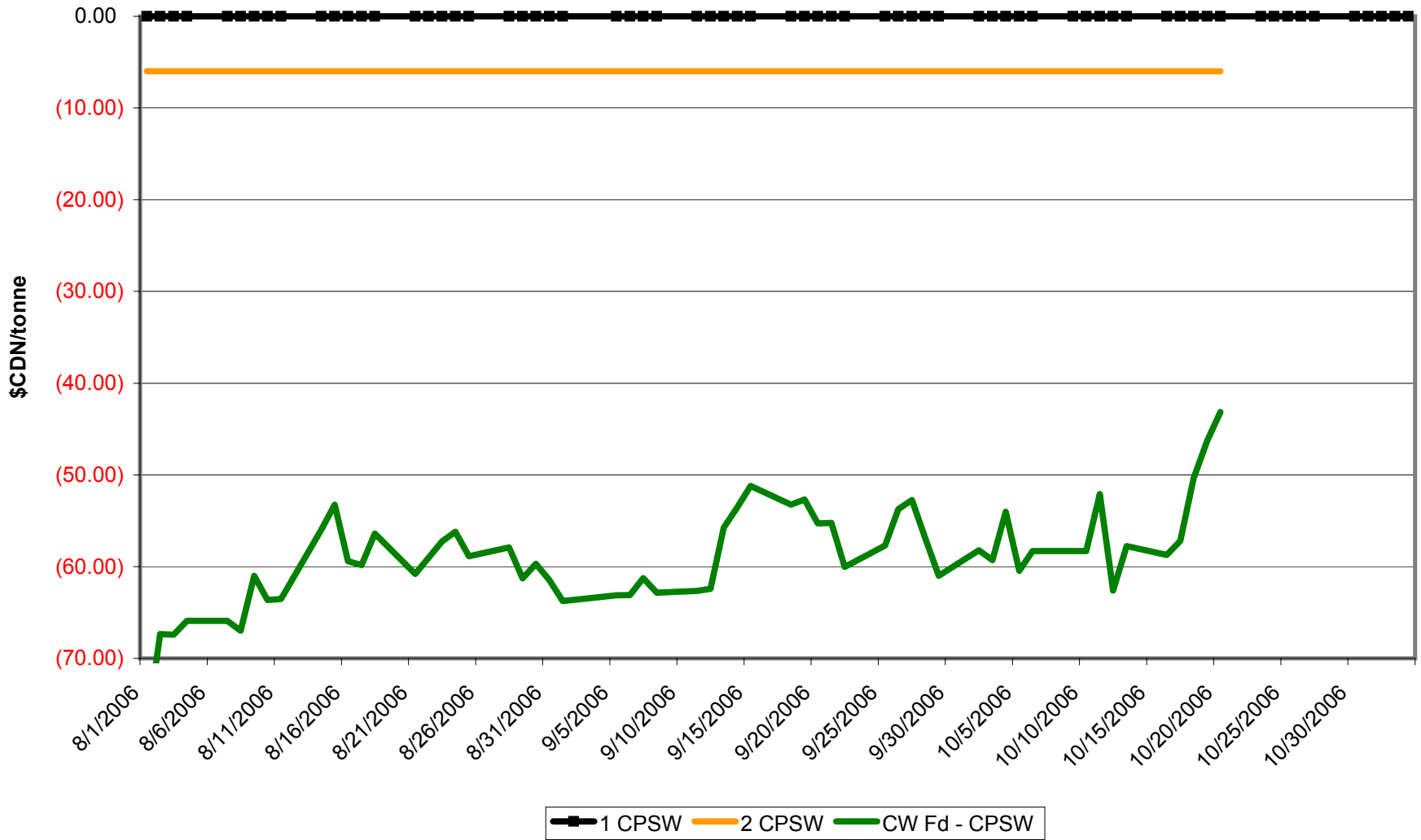
2006/07 DPC Spreads - CPSR No. 2 & Feed

(reference/base grade of No. 1 CPSR)



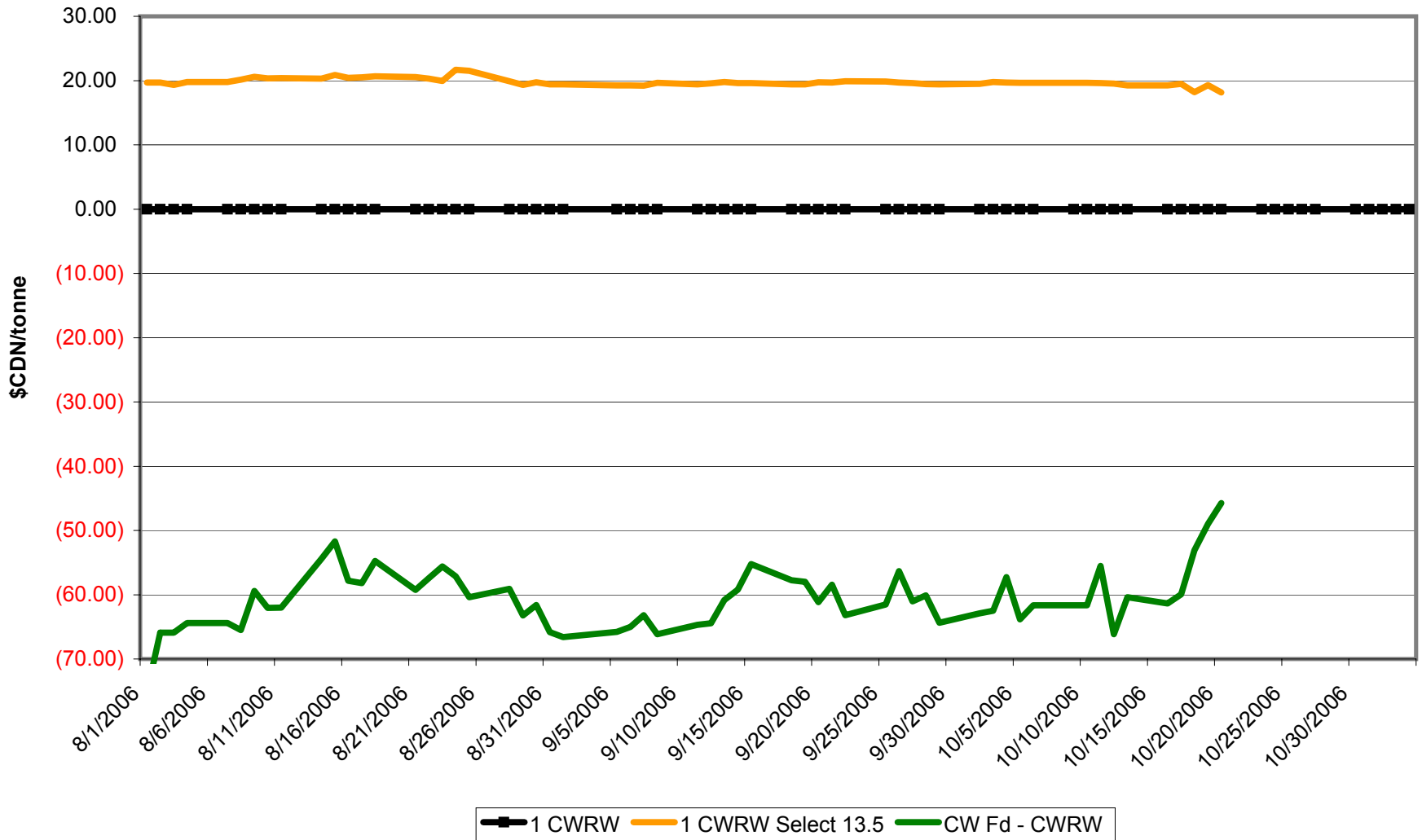
2006/07 DPC Spreads - CPSW No. 2 & Feed

(reference/base grade of No. 1 CPSW)



2006/07 DPC Spreads - CWRW No. 1 13.5% Sel & Feed

(reference/base grade of No. 1 CWRW)



2006/07 DPC Spreads - CWSWS No. 2 & No. 3

(reference/base grade of No. 1 CWSWS)

