



ALBERTA, CANADA

Meetings, Conventions & Incentive Guide.

TravelAlberta.com



NORTH AMERICA FLIGHT TIMES TO ALBERTA

From	To Calgary	To Edmonton
Chicago	3 hrs. 48 min.*	5 hrs. 55 min.
Dallas	3 hrs. 45 min.*	5 hrs. 20 min.
Denver	2 hrs. 39 min.*	2 hrs. 50 min.*
Houston	4 hrs. 12 min.*	5 hrs. 45 min.
Los Angeles	3 hrs.*	3 hrs. 20 min.*
Minneapolis	2 hrs. 50 min.*	2 hrs. 56 min.*
New York	5-6 hrs.	5-6 hrs.
San Francisco	2 hrs. 35 min.*	4 hrs. 25 min.
Seattle	1 hr. 25 min.*	1 hr. 35 min.*
Washington D.C.	6 hrs. 35 min.	6 hrs. 45 min.
Montreal	4 hrs. 36 min.*	5 hrs. 30 min.
Toronto	4 hrs. 10 min.*	4 hrs. 6 min.*
Vancouver	1 hr. 20 min.*	1 hr. 30 min.*

INTERNATIONAL FLIGHT TIMES TO ALBERTA

From	To Calgary	To Edmonton
Amsterdam	10 hrs. 15 min.	12 hrs. 10 min.
Auckland	19 hrs. 2 min.	21 hrs. 40 min.
Frankfurt	8 hrs. 50 min.*	10 hrs. 55 min.
Hong Kong	14 hrs. 25 min.	14 hrs. 53 min.
London	8 hrs.*	9 hrs. 55 min.
Paris	13 hrs. 41 min.	15 hrs. 12 min.
Seoul	13 hrs. 25 min.	14 hrs. 15 min.
Singapore	20 hrs. 5 min.	20 hrs. 25 min.
Sydney	20 hrs. 45 min.	20 hrs. 35 min.
Tokyo	12 hrs. 5 min.	11 hrs. 18 min.

* Represents non-stop flights.



ALBERTA

Legendary Hospitality.

Imagine a place with spectacular scenery, legendary hospitality, an outstanding variety of cosmopolitan, cultural amenities and distinct state-of-the-art meeting facilities. Welcome to Alberta, Canada.

Proudly Canadian, but uniquely Albertan, we are the only province without a provincial sales tax, and with two international airports we are easy to reach from almost any destination in the world.

The following pages highlight everything you'll want to know about Alberta's diverse destinations, top-notch meeting facilities and incentive travel opportunities. For more information about how Alberta can benefit your next program, call the reference numbers provided on each page, or visit our web site TravelAlberta.com.





DRIVING DISTANCES

FROM CALGARY TO

Banff	128 km	80 miles	1 hr. 30 min.
Canmore	103 km	62 miles	1 hr.
Drumheller	136 km	85 miles	1 hr. 30 min.
Edmonton	297 km	185 miles	3 hrs.
Jasper	410 km	255 miles	4 hrs. 30 min.
Kananaskis	105 km	63 miles	1 hr. 15 min.
Lake Louise	180 km	112 miles	2 hrs.
Lethbridge	203 km	126 miles	2 hrs.
Medicine Hat	293 km	182 miles	3 hrs.
Red Deer	145 km	90 miles	1 hr. 30 min.
Waterton Park	273 km	169 miles	4 hrs.

FROM EDMONTON TO

Banff	421 km	264 miles	5 hrs.
Calgary	297 km	185 miles	3 hrs.
Canmore	379 km	237 miles	4 hrs.
Fort McMurray	439 km	273 miles	4 hrs. 30 min.
Grande Prairie	456 km	284 miles	5 hrs.
Jasper	362 km	226 miles	4 hrs.
Kananaskis	371 km	232 miles	4 hrs.
Lake Louise	453 km	283 miles	5 hrs. 30 min.
Lloydminster	248 km	154 miles	2 hrs. 30 min.
Red Deer	148 km	92 miles	1 hr. 30 min.
Waterton Park	570 km	355 miles	7 hrs. 30 min.



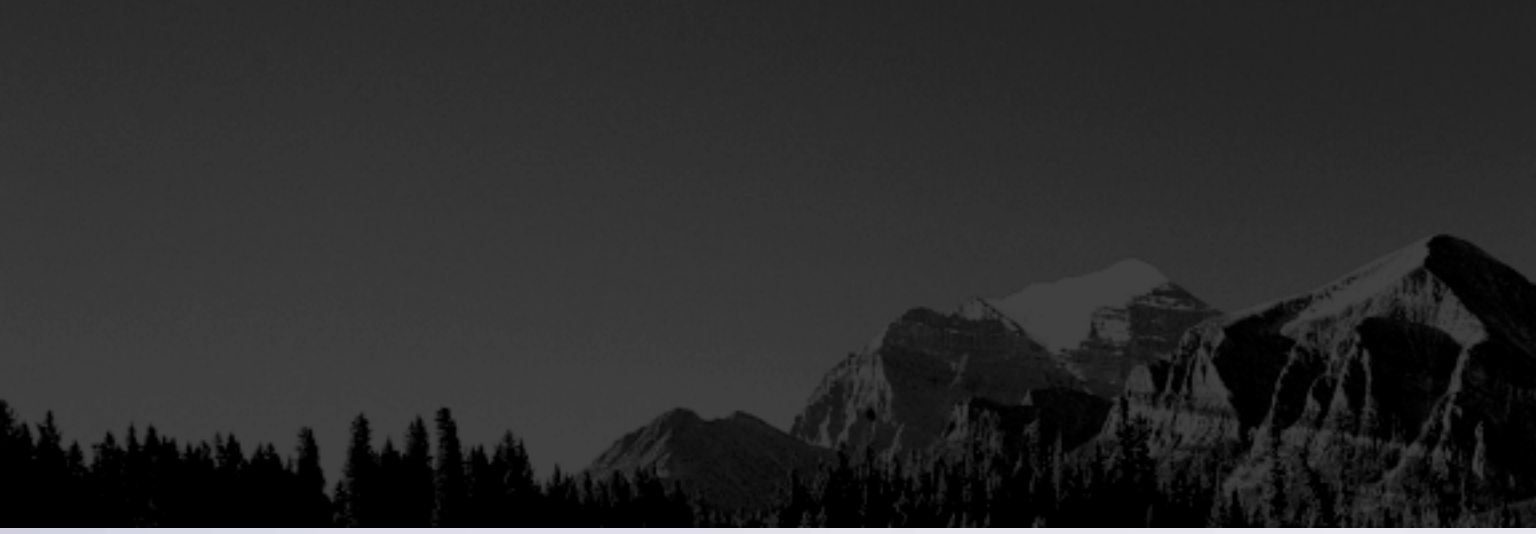
CITIES

Enriching. Urban Options.

Whether your meeting requires the unsurpassed sophistication of a large metropolitan area, or the quiet charm of a smaller urban centre, your success is assured in Alberta.

Meet in the stylish, cosmopolitan gateway cities of Calgary and Edmonton – both experienced in hosting international events such as the World Championships in Athletics, Winter Olympics, Rotary International and the G-8 Summit. And don't forget the overflowing hospitality and charm of Alberta's smaller cities, where you'll find the perfect regional alternative for your meeting or convention.





CONVENTION CENTRE

Name:
Telus Convention Centre
Total Combined Facility:
130,000 sq. ft.
Largest Exhibit Capacity:
500 (10 x 10 ft. booths)
Largest Banquet Capacity:
3,500 people, at round tables
Largest Theatre Capacity:
4,000 people

EXHIBITION FACILITIES

Name:
Calgary Exhibition and Stampede (Including Roundup Centre and Big Four Building)
Total Exhibition Area:
450,000 sq. ft.
Largest Exhibit Capacity:
1,100 (10 x 10 ft. booths)
Largest Banquet Capacity:
10,000 people, at round tables
Largest Theatre Capacity:
6,000 people

CONVENTION HOTELS

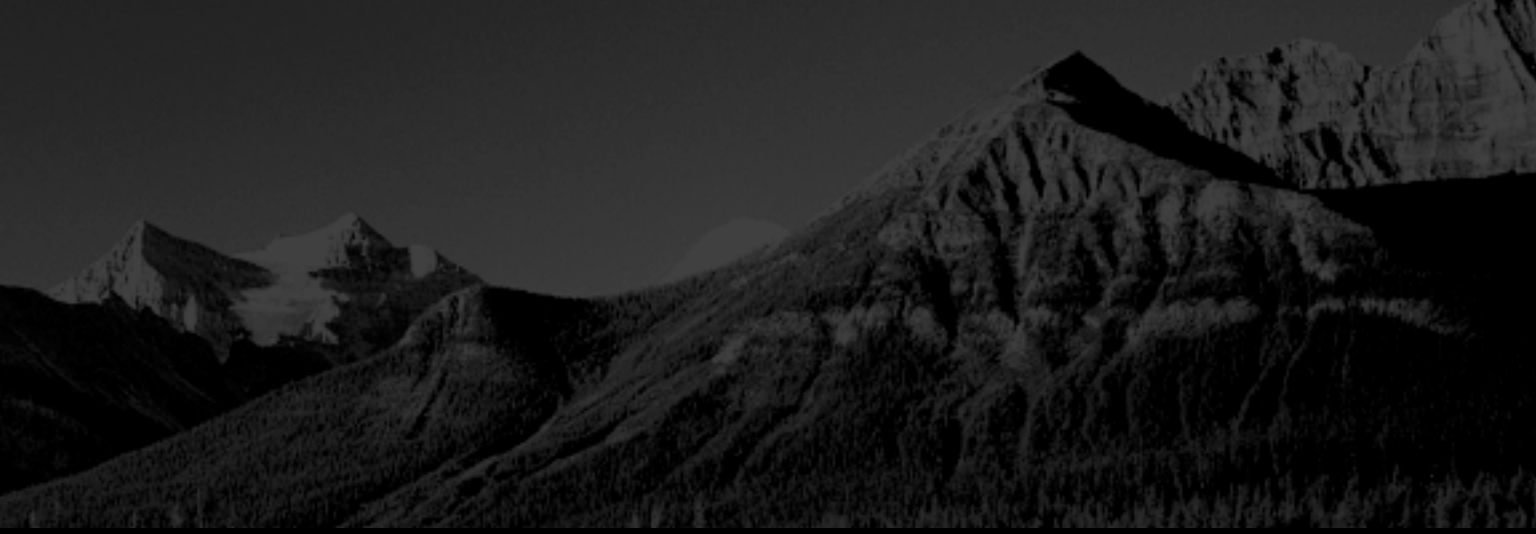
Total Number:
32 with min. of 2 meeting rooms
Total Exhibition Area:
Approx. 400,000 sq. ft.
Largest Exhibit Capacity:
13,500 sq. ft.
Largest Banquet Capacity:
1,200 people, at round tables
Largest Theatre Capacity:
1,550 people

ACCOMMODATION

Number of Hotels Within One-half Mile of Convention Centre: 15
Total Number of Rooms : (city-wide) 10,950

ALTERNATE MEETING SITES

- Canada Olympic Park
- EPCOR Centre for Performing Arts
- Fort Calgary Historic Park
- Heritage Park
- Jubilee Auditorium
- Pengrowth Saddledome
- Spruce Meadows
- University of Calgary



CALGARY

City Style. Mountain Splendour.

Calgary is an engaging blend of traditional western hospitality and exhilarating entrepreneurial spirit. Some even call this city of almost one million residents the heart of the "New West"; a thriving metropolis that attracts innovators from all over the world. Calgary's diverse selection of first-class hotels and meeting facilities cater to the special needs of the largest and smallest groups. And with its setting in the rolling foothills of the Canadian Rockies, the spectacular snow-capped peaks provide a stunning backdrop to Canada's fastest growing city.



1 800 661 1678

tourismcalgary.com



CONVENTION CENTRE

Name:
Shaw Conference Centre

Total Combined Facility:
150,000 sq. ft.

Largest Exhibit Capacity:
335 (10 x 10 ft. booths)

Largest Banquet Capacity:
3,500 people, at round tables

Largest Theatre Capacity:
7,000 people

EXHIBITION FACILITIES

Name:
Northlands Park

Total Exhibition Area:
400,000 sq. ft.

Largest Exhibit Capacity:
1,629 (10 x 10 ft. booths)

Largest Banquet Capacity:
8,000 people, at round tables

Largest Theatre Capacity:
17,099 people

CONVENTION HOTELS

Total Number:
34 with min. of 2 meeting rooms

Total Exhibition Area:
Approx. 354,500 sq. ft.

Largest Exhibit Capacity:
44,000 sq. ft.

Largest Banquet Capacity:
1,200 people, at round tables

Largest Theatre Capacity:
1,200 people

ACCOMMODATION

Number of Hotels Within
One-half Mile of Convention
Centre: 12

Total Number of Rooms
(city-wide): 11,500

ALTERNATE MEETING SITES

Citadel Theatre

Commonwealth Stadium

Fort Edmonton

Jubilee Auditorium

Kinsmen Fieldhouse

Mayfield Trade Centre

TELUS Centre

University of Alberta

Winspear Centre

LARGEST SINGLE MEETING CAPACITY: 17,000 people



EDMONTON

Capital Culture. Redefined.

Alberta's capital city sweeps dramatically along the banks of the picturesque North Saskatchewan River. A vibrant, multicultural city, Edmonton is Alberta's festival city and is home to a world-class symphony orchestra, eclectic neighbourhoods, superb restaurants and exciting professional sports teams. Long known as the "Gateway to the North", Edmonton's International Airport welcomes adventure-seekers, artists and professionals from every corner of the world. The University of Alberta attracts much of this attention with its many discoveries and academic achievements in the medical field. Truly a technologically and culturally modern city, Edmonton has earned its reputation as a desirable destination for meetings, conventions or just pure enjoyment.

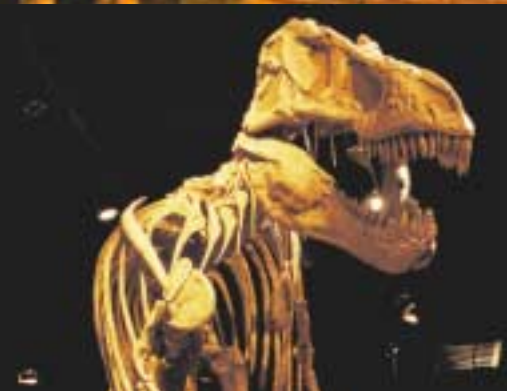




ALBERTA ADVANTAGE

Rural Centres. Strong Economies.

The telltale signs of Canada's strongest economy can be seen beyond the borders of its major urban hubs. Veer through Alberta's rich, rolling ranchlands or its wind-scarred Badlands and discover charming, smaller centres loaded with atmosphere and intimate meeting spaces. Perfect for groups who wish to theme their trip around specific industries such as agriculture, energy and ranching. As the locals like to say in some of these parts, we've got you covered, pardner!





LETHBRIDGE

Professional Pride. Cultural Mosaic.

Lethbridge offers cosmopolitan amenities, a rich cultural mosaic, and many recreational and cultural events – making it a varied and dynamic city. Located in Southwest Alberta, Lethbridge is Alberta's third largest city and also boasts the distinction of being Canada's sunniest city. Lethbridge has a great reputation for hosting a wide variety of summer and winter sporting events and tournaments due to its first-class facilities and variety of accommodation options.



CONVENTION FACILITIES

- Name: Exhibition Park
Total Exhibition Area: 142,000 sq. ft.
- Name: Enmax Centre
Total Exhibition Area: 1,700 to 35,000 sq. ft.
- Name: Lethbridge Soccer Centre
Total Exhibition Area: 34,000 sq. ft.

CONVENTION HOTELS

Total Number: 4 with min.. 2 meeting rooms
Largest Single Meeting Capacity: 1,000

ALTERNATE MEETING SITES

- Bowman Arts Centre
- Ericksen's Restaurant and Conference Centre
- Fort Whoop-up Centre

- Galt Museum
- Holiday Inn Express
- Lethbridge Community College
- Paradise Canyon Golf Resort
- Parkside Inn
- Southern Alberta Art Gallery
- University of Lethbridge

Contact

Lethbridge Convention & Visitors Bureau, BLT Centre
#200, 817-4th Ave. South
Lethbridge, AB T1J 0P3
Toll-Free: 1-866-213-4070
Fax: 1-403-331-0202
www.lethbridgecvb.com
www.tourismlethbridge.com

1 866 213 4070

tourismlethbridge.com



SMALLER CITIES

Western Heritage. Global Outlook.

Take your meeting to the next level in one of Alberta's smaller urban centres. You'll find all the amenities and conveniences of big city living combined with the indescribable charm of small-town hospitality.

The best part is — you'll still be right in the heart of the action. As key players in the growth of a thriving economy, Alberta's smaller cities provide service and support to the province's prosperous energy, agriculture and manufacturing industries.

FORT McMURRAY (pop. 49,000)

Convention Facilities

MacDonald Island
Recreation Centre
Total Exhibit Area: 27,500 sq.ft.
Convention Hotels: 5
with min. 2 meeting rooms
Largest meeting capacity: 500

Alternate Meeting Sites

- Keyano College
- Oil Sands Discovery Centre

Fort McMurray Tourism
400 Sakitawaw Trail
Fort McMurray, AB T9H 4Z3
Toll-Free: 1-800-565-3947
Fax: 1-780-790-9509

GRANDE PRAIRIE (pop. 38,000)

Convention Facilities

Crystal Centre
Total Exhibit Area: 38,900 sq.ft.
Convention Hotels: 9 with min. 2 meeting rooms
Largest meeting capacity: 5,700

Alternate Meeting Sites

- Centre for Creative Arts • Evergreen Park
- Grande Prairie Regional College
- Muskoseepi Park Pavillion • Queen Elizabeth II Hospital • Centre 2000 Trade and Tourism
- Golden Age Centre • Camp Tamarak

Grande Prairie Regional Tourism Association
11330-106th St.
Grande Prairie, AB T8V 7X9
Phone: 1-780-539-7688
Fax: 1-780-539-0905

LLOYDMINSTER (pop. 22,000)

Convention Facilities

Lloydminster Agriculture Exhibition
(includes Stockade Convention Centre)
Total Exhibit Area: 94,400 sq.ft.
Convention Hotels: 2 with min. 2 meeting rooms
Largest meeting capacity: 1,200
(Stockade Convention Centre)

Alternate Meeting Sites

- Lakeland College • Legacy Centre
- Lloydminster Civic Centre
- Lloydminster Communiplex

Lloydminster Tourism and Convention Authority
4420-50th Ave.
Lloydminster, AB T9V 0W2
Toll-Free: 1-800-825-6180
Fax: 1-780-871-8347



MEDICINE HAT (pop. 52,000)

Convention Facilities

Medicine Hat Exhibition and Stampede
 Total Exhibit Area: 94,400 sq.ft.
 Convention Hotels: 4 with min. 2 meeting rooms
 Largest meeting capacity: 2,000

Alternate Meeting Sites

- Callaghan Inn • Connaught Golf Club
- Cultural Centre • Cypress Centre • Eagles Club
- Eagles Nest Ranch • Elks • Howard Johnson
- Imperial Inn • Medicine Hat Lodge • MH Golf & Country Club • Moose Lodge

Tourism Medicine Hat
 #8 Gehring Rd. SW
 Medicine Hat, AB T1A 7G5
Toll-Free: 1-800-481-2822
Fax: 1-403-528-2682
tmhvisit@shockware.com

RED DEER (pop. 70,593)

Convention Facilities

Westerner Park
 Total Exhibit Area: 250,000 sq.ft.
 Convention Hotels: 7 with min. 2 meeting rooms
 Largest meeting capacity: 6,000

Alternate Meeting Sites

- Canyon Ski Lodge • Cronquist House • Festival Hall, Golden Circle • Heritage Ranch • Kerry Wood Nature Centre • River Bend Golf Course
- Royal Canadian Legion

Red Deer Convention and Visitors Bureau
 P.O. Box 5008
 Red Deer, AB T4N 3T4
Toll-Free: 1-800-215-8946
Fax: 1-403-346-5081
www.tourismreddeer.net
info@tourismreddeer.net

ST. ALBERT (pop. 55,000)

Convention Hotel: 1 with min. 2 meeting rooms
 Largest meeting capacity: 400

Alternate Meeting Sites

- Kinsmen Korral • Cornerstone Hall • St. Albert Community Hall • Star of the North Retreat

St. Albert Economic Development and Tourism
 71 Albert Rd.
 St. Albert, AB T8N 6L5
Phone: 1-780-459-1724
Fax: 1-780-460-1161



Alberta may look like the land of a million Christmas trees, but it's also a huge outdoor playground. Load it with bowls of dry, fluffy powder and sun-kissed skies and you've got the formula for world-class ski resorts. From alpine and nordic to wild and woolly snowmobile loops, winter in Alberta is how it was meant to be – complete with seamless white-glove service when you want it. This winter, let Alberta take high-speed access out of your boardroom and onto our slopes.

ALBERTA'S SKI RESORTS

Mount Norquay, Banff
Sunshine Village, Banff
Lake Louise, Lake Louise
Marmot Basin, Jasper

Fortress Mountain, Kananaskis
Nakiska, Kananaskis
Castle Mountain, Pincher Creek



CANADIAN ROCKIES

Enchanting. Breathlessly Real.

Take a deep breath and imagine your meeting ensconced in the majestic Canadian Rockies. There's little doubt Alberta's spectacular mountain setting will do wonders for your meeting's productivity and create just the inspiration you need to conquer even greater targets in the world of business. Located on the northern end of a chain of mountains that stretches thousands of miles from Alberta to New Mexico, Canada's Rocky Mountains soar above the ordinary. Imagine evergreen-studded mountain slopes, thousands of square miles of pristine wilderness, rolling golf courses and settings that border glacier lakes. Choose from a long list of unforgettable meeting locations – from rustic mountain lodges to full-service luxury hotels. Remote and memorable resorts or quaint mountain villages. Imagine.





CANMORE

*Vertically Inclined.
Community Conscience.*

An hour's drive west of Calgary, right on the doorstep of Banff National Park, lies an unsung playground of natural wonders. From towering peaks to first-class golf courses and affordable resorts – this is a landscape designed to inspire. Whatever is on your agenda...be it civilized pleasures or rugged adventures – from world-class skiing to mountain biking and rafting – a meeting in Canmore always comes with rewards that go well beyond the boardroom.

CONVENTION HOTELS

Total Number:
6 with min. of
2 meeting rooms

Total Exhibition Area:
25,572 sq. ft.

Largest Exhibit Capacity:
6,042 sq. ft.

Largest Banquet Capacity:
525 people, at round tables

Largest Theatre Capacity:
800 people

ACCOMMODATION

Total Number of Rooms:
1,800

ALTERNATE MEETING SITES

Canmore Arena
Canmore Nordic Centre

Contact

Tourism Canmore
#12, 801-8th St.
Canmore, AB T1W 2B3
Phone: 1-403-678-1295
Fax: 1-403-678-1296



LARGEST SINGLE MEETING CAPACITY: 800 people

1 403 678 1295

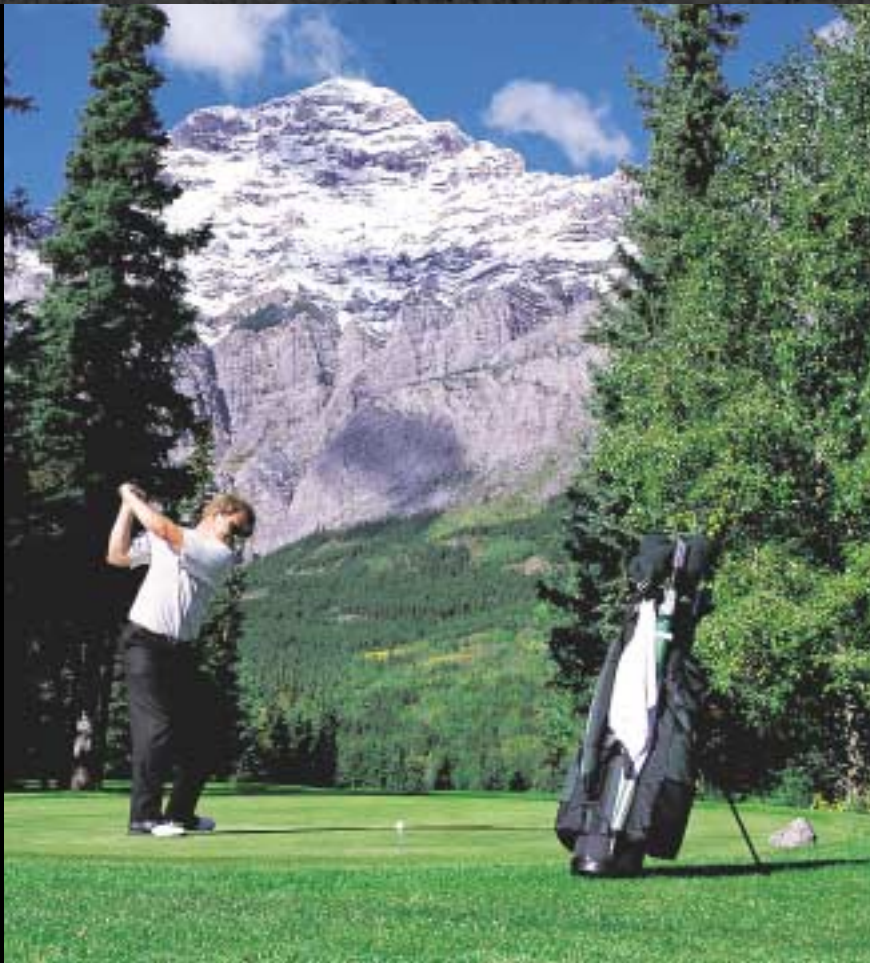
tourismcanmore.com



KANANASKIS

Explore Adventure. Soothing Comfort.

Kananaskis is a year-round mountain resort that brims with the promise of unlimited recreational possibilities. Cradled in the Canadian Rockies, Kananaskis is known as the Valley of Adventure and features miles of premier hiking, biking and cross-country ski trails, world-class golf courses and a ski area built for the 1988 Olympics. Awe-inspiring vistas provide the perfect backdrop for your meeting or incentive program just 90 minutes west of the Calgary International Airport.



CONVENTION HOTELS

Total Number:
2 with min. of
2 meeting rooms

Total Exhibition Area:
22,776 sq. ft.

Largest Exhibit Capacity:
24 (10x10 ft. booths)

Largest Banquet Capacity:
400 people, at round tables

Largest Theatre Capacity:
540 people

LARGEST SINGLE MEETING CAPACITY: 400 people

ACCOMMODATION

Total Number of Rooms:
410

ALTERNATE MEETING SITES

Boundary Ranch
Kananaskis Golf Course
Kananaskis Guest Ranch
Nakiska
Kakoda Guest Lodge (Morley)
Village Centre

Contact

Kananaskis Valley of Adventure
P.O. Box 249
Kananaskis, AB T0L 2H0

1 403 591 7500

discoverkananaskis.com



BANFF

World Heritage. Breathtaking Beauty.

Just a 90-minute drive from the international gateway of Calgary, Banff National Park encompasses the legendary alpine towns of Banff and Lake Louise. For more than a century, explorers, mountain climbers and pleasure seekers have drenched their thirst for adventure in this spectacular place. Today you will find high-end resorts, world-class meeting and conference facilities, an international arts centre, dining and shopping options, luxurious spas, plus one of Canada's top-notch golf courses. The Banff paradigm has set the bar high.

CONVENTION CENTRES

The Fairmont Banff Springs Hotel and Convention Centre

Total Exhibition Area: 76,000 sq. ft.

Largest Exhibit Capacity: 85 (8 x 10 ft. booths)

Largest Banquet Capacity: 1,000 people, at round tables

Largest Theatre Capacity: 1,600 people

The Banff Centre for Conferences

Total Exhibition Area: 76,000 sq. ft.

Largest Exhibit Capacity: 70 (10 x 10 ft. booths)

Largest Banquet Capacity: 450 people, at round tables

Largest Theatre Capacity: 1,000 people

CONVENTION HOTELS

Total Number: 12 with min. 2 meeting rooms

Total Exhibition Area: Approx. 235,000 sq. ft.

Largest Exhibit Capacity: 15,000 sq. ft.

Largest Banquet Capacity: 1,000 people, at round tables

Largest Theatre Capacity: 1,600 people

ACCOMMODATION

Number of Hotels Within Area of Convention Centre: 42 within Banff

Total Number of Rooms: 4,660

ALTERNATE MEETING SITES

Ski Banff at Norquay

Contact

Banff/Lake Louise
Tourism Bureau
P.O. Box 1298
Banff, AB T1L 1B3
Phone: 1-403-762-0270
Fax: 1-403-762-8545



LARGEST SINGLE MEETING CAPACITY: 1,600 people

1 403 762 0270

banfflakelouise.com

LAKE LOUISE

Lasting Memories. Beloved Jewel.

Likely the most photographed location in the Canadian Rockies is Lake Louise. Once you witness its blue-green water contrasting the breathtaking backdrop of the Victoria Glacier you'll never forget it. Romantic and relaxing, it's been called the ultimate getaway providing unashamed luxury, vibrant night life, fine dining and of course first-class accommodations and meeting facilities. Add to this a world-class ski hill and you have an amazing destination summer or winter.



CONVENTION CENTRE

Name:
The Fairmont Chateau
Lake Louise*

Total Exhibition Area:
29,690 sq. ft.

Largest Exhibit Capacity:
72 (8 x 10 ft. booths)

Largest Banquet Capacity:
610 people, at round tables

Largest Theatre Capacity:
725 people

LARGEST SINGLE MEETING CAPACITY: 700 people

CONVENTION HOTELS

Total Number:
3 with min. 2 meeting rooms

Total Exhibition Area:
Approx. 40,000 sq. ft.

Largest Exhibit Capacity:
15,000 sq. ft.

Largest Banquet Capacity:
500 people, at round tables

Largest Theatre Capacity:
800 people

ACCOMMODATION

Number of Hotels Within
One-half Mile of Convention
Centre:
10 within Banff

Total number of rooms: 1,100

ALTERNATE MEETING SITES

Brewster Cowboy's Barbecue
and Dance Barn

Lake Louise Ski Area's Lodge
of the Ten Peaks

Contact
Banff/Lake Louise
Tourism Bureau
P.O. Box 1298
Banff, AB T1L 1B3
Phone: 1-403-762-0270
Fax: 1-403-762-8545

*Grand opening June 2004

1 403 762 0270

banfflakelouise.com



JASPER

Rustic Elegance. Savage Landscape.

Jasper is a favourite of those lucky enough to have experienced its friendly mountain hospitality and peaceful environment. Located in Jasper National Park, a spectacular half day's drive from Calgary or Edmonton, Jasper is famous for the renowned Fairmont Jasper Park Lodge and its championship golf course. Journey along the Icefields Parkway from Lake Louise where the peaks of the Canadian Rockies frame one of the most beautiful highways in the world. The promise of endless possibility combined with exceptional hospitality guarantees your meeting will be unforgettable.

CONVENTION CENTRE

Name:
Jasper Activity Centre
Total Exhibition Area:
21,372 sq. ft.
Largest Exhibit Capacity:
100 (10 x 10 ft. booths)
Largest Banquet Capacity:
500 people, at round tables
Largest Theatre Capacity:
1,200 people

CONVENTION HOTELS

Total Number:
5 with min. of 2 meeting rooms
Total Exhibition Area:
41,144 sq. ft.
Largest Exhibit Capacity:
26,500 sq. ft.
Largest Banquet Capacity:
750 people, at round tables
Largest Theatre Capacity:
960 people

ACCOMMODATION

Number of Hotels Within
One-half Mile of Convention
Centre: 10
Total Number of Rooms:
1,503

ALTERNATE MEETING SITES

Maligne Lake
Marmot Basin
Trefoil Lake

Contact

Jasper Chamber of Commerce
P.O. Box 98
Jasper, AB T0E 1E0
Phone: 1-780-852-3858
Fax: 1-780-852-4932
jaspercc@incentre.net



LARGEST SINGLE MEETING CAPACITY: 1,200 people

1 780 852 3858

jaspercanadianrockies.com



ROMANCE BY RAIL

Now The West Was One.

The Canadian Rocky Mountains are legendary for their breathtaking beauty, charming villages and year-round recreation. Let their rugged beauty roll over you from the comfort of a dome car – after all, the railway was the link in developing the Wild West. With several lines zig-zagging across Alberta you can choose to host a meeting on one, join a murder mystery on another, or simply luxuriate in the sybaritic splendour of what's been dubbed Canada's Orient Express. Keep life on track with one of the most romantic, nostalgic journeys on this planet.





IMAGINE

They'll Thank You For It.

For more than a century, the Canadian Rockies have fueled a thousand fantasies of mountaineering, luxury and romance. Imagine – towering peaks that tickle the heavens, meandering fairways that caress our river's edge. Imagine – breathtaking adventures in champagne powder, the smell of crackling logs that warm your soul. Imagine – calming views and soothing waters, healthful retreats and pampered luxury. There is little doubt Alberta will fuel a thousand more fantasies. You're only limited by one thing – your imagination.

SEASONAL ACTIVITIES

SUMMER

Fishing
Golfing
Tennis
Hiking
Trail Rides
Mountain Biking
Rafting
Canoeing
Heli-Hiking

WINTER

Nordic Skiing
Alpine Skiing
Heli-Skiing
Skating
Sleigh Rides
Snowmobling
Snowshoeing
Ice Fishing
Dog Sledding
Ice walks

YEAR-ROUND

Sightseeing
Shopping
Rodeos
Museums
Galleries
Performing Arts
Arts & Crafts
Photo Safaris
Hot Springs



To receive motivating program options contact one of our Destination Management Companies listed on our web site.

TravelAlberta.com



MOTIVATE

You'll Want To Stay Awhile.

From the inland golden seas of wheat to the soaring peaks of the Canadian Rockies to the eerily bold hoodoos, Alberta is a natural beauty. Five of Canada's 13 World Heritage UNESCO Sites, combined with our five national parks and over 60 provincial protected playgrounds, will motivate your delegates to come early or extend their trip. Explore our urban centres and visit museums, galleries and festivals, or experience the back-country trails. For more information or to plan your personalized vacation visit our web site or contact our travel counselors at 1-800-ALBERTA.



photo credit Horse Source Ltd.



ALBERTA'S PARKS

MOUNTAIN PARKS

Banff National Park
 Jasper National Park
 Kananaskis Country
 Waterton Lakes National Park

OTHER MAJOR PARKS

Dinosaur Provincial Park
 Elk Island National Park
 Wood Buffalo National Park

UNESCO SITES

Banff/Jasper National Parks
 Dinosaur Provincial Park
 Head-Smashed-In Buffalo Jump
 Waterton-Glacier International Peace Park
 Wood Buffalo National Park

1 800 ALBERTA

TravelAlberta.com

ESSENTIALS

CANADA CUSTOMS

Alberta District Office

Bay 32, 3033-34th Ave. NE
Calgary, AB T1Y 6X2
Toll-Free: 1-800-461-9999
Int'l: 1-204-983-3500
Fax: 1-403-292-4840

U.S. PORTS OF ENTRY

Aden, AB ~ Whitlash, MT
Carway, AB ~ Peigan, MT
Chief Mountain, AB ~ Chief
Mountain, MT
Coutts, AB ~ Sweetgrass, MT
Del Bonita, AB ~ Del Bonita, MT
Wild Horse, AB ~ Wild Horse, MT

DUTY FREE

18 yrs. or older
40 oz (1.1 L) Liquor or Beer
50 Cigars or 200 Cigarettes or
400 grams of manufactured tobacco

CANADIAN TOURISM COMMISSION OFFICE (U.S.)

Special Market
Jackie Brown
Canadian Embassy
501 Pennsylvania Ave. NW
Washington, D.C. 20001
Phone: 1-202-682-1740 ext: 7280
Fax: 1-202-682-7721
Email: brown.jackie@ctc-cct.ca

ALBERTA TOURISM DESTINATION REGIONS

Alberta North

PO Box 1518
328-2nd St. NE
Slave Lake, AB T0G 2A0
Toll Free: 1-800-756-4351
Fax: 1-780-849-3134
www.travelalbertanorth.com

Alberta South

3096 Dunmore Rd. SE
Medicine Hat, AB T1B 2X2
Phone: 1-403-526-6355
Fax: 1-403-527-5960
www.travelalbertasouth.com

Alberta Central

13 Mission Ave.
St. Albert, AB T8N 1H6
Toll Free: 1-888-414-4139
Fax: 1-403-254-6023
www.travelalbertacentral.com

Calgary & Area

#200, 238-11th Ave. SE
Calgary, AB T2G 0X8
Phone: 1-403-263-4963
Fax: 1-403-263-5297
www.tourismcalgary.com

Edmonton & Area

Economic Development Edmonton
9797 Jasper Ave. NW
Edmonton, AB T5J 1N9
Phone: 1-780-917-7662
Fax: 1-780-425-5283
www.edmonton.com

Canadian Rockies

Box 520
102 Spray Ave.
Banff, AB T1L 1A6
Phone: 1-403-762-0279
Fax: 1-403-762-9428
www.canadianrockiestourism.com





CONVENTION & VISITORS BUREAUX

Banff / Lake Louise Tourism Bureau

PO Box 1298
 Banff, AB T1L 1B3
 Phone: 1-403-762-0270
 Fax: 1-403-762-8545
 info@banfflakelouise.com
 www.banfflakelouise.com

Tourism Calgary

#200, 238-11th Ave. SE
 Calgary, AB T2G 0X8
 Phone: 1-403-263-8510
 Fax: 1-403-262-3809
 Toll Free: 1-800-661-1678
 www.tourismcalgary.com

Edmonton Tourism

9797 Jasper Ave.
 Edmonton, AB T5J 1N9
 Toll Free: 1-800-463-4667
 Fax: 1-780-425-5283
 www.edmonton.com

Fort McMurray Tourism

400 Sakitawaw Trail
 Fort McMurray, AB T9H 4Z3
 Toll Free: 1-800-565-3947
 Fax: 1-780-790-9509
 info@fortmcmurraytourism.com
 www.fortmcmurraytourism.com

Grande Prairie Regional Tourism Association

11330 106th St.
 Grande Prairie, AB T8V 7X9
 Phone: 1-780- 539-7688
 Fax: 1-780-539-0905
 chamber@southpeace.org
 www.gpchamber.com

Jasper Tourism & Commerce

PO Box 98
 Jasper, AB T0E 1E0 (Mail Only)
 409 Patricia St. (Physical Address)
 Phone: 1-780-852-3858
 Fax: 1-780-852-4932
 jasperc@incentre.net
 www.jaspercanadianrockies.com

Lethbridge Convention & Visitors Bureau, BLT Centre

#200, 817-4th Ave. South
 Lethbridge, AB T1J 0P3
 Toll-Free: 1-866-213-4070
 Fax: 1-403-331-0202
 www.lethbridgecvb.com
 www.tourismlethbridge.com

Lloydminster Tourism & Convention Authority

4420-50th Ave.
 Lloydminster, AB T9V 0W2
 Toll Free: 1-800-825-6180
 Fax: 1-780-871-8347
 visit@boardercity.com
 www.lloydminsterinfo.com

Tourism Medicine Hat

#8 Gehring Road SW
 Medicine Hat, AB T1A 7G5
 Toll Free: 1-800-481-2822
 Fax: 1-403-528-2682
 tmhvisit@shockware.com
 www.albertasouth.com
 www.canadianprairies.com

Red Deer Convention & Visitors Bureau

PO Box 5008
 Red Deer, AB T4N 3T4
 Toll Free: 1-800-215-8946
 Fax: 1-403-346-5081
 info@tourismreddeer.net
 www.tourismreddeer.net





TravelAlberta.com