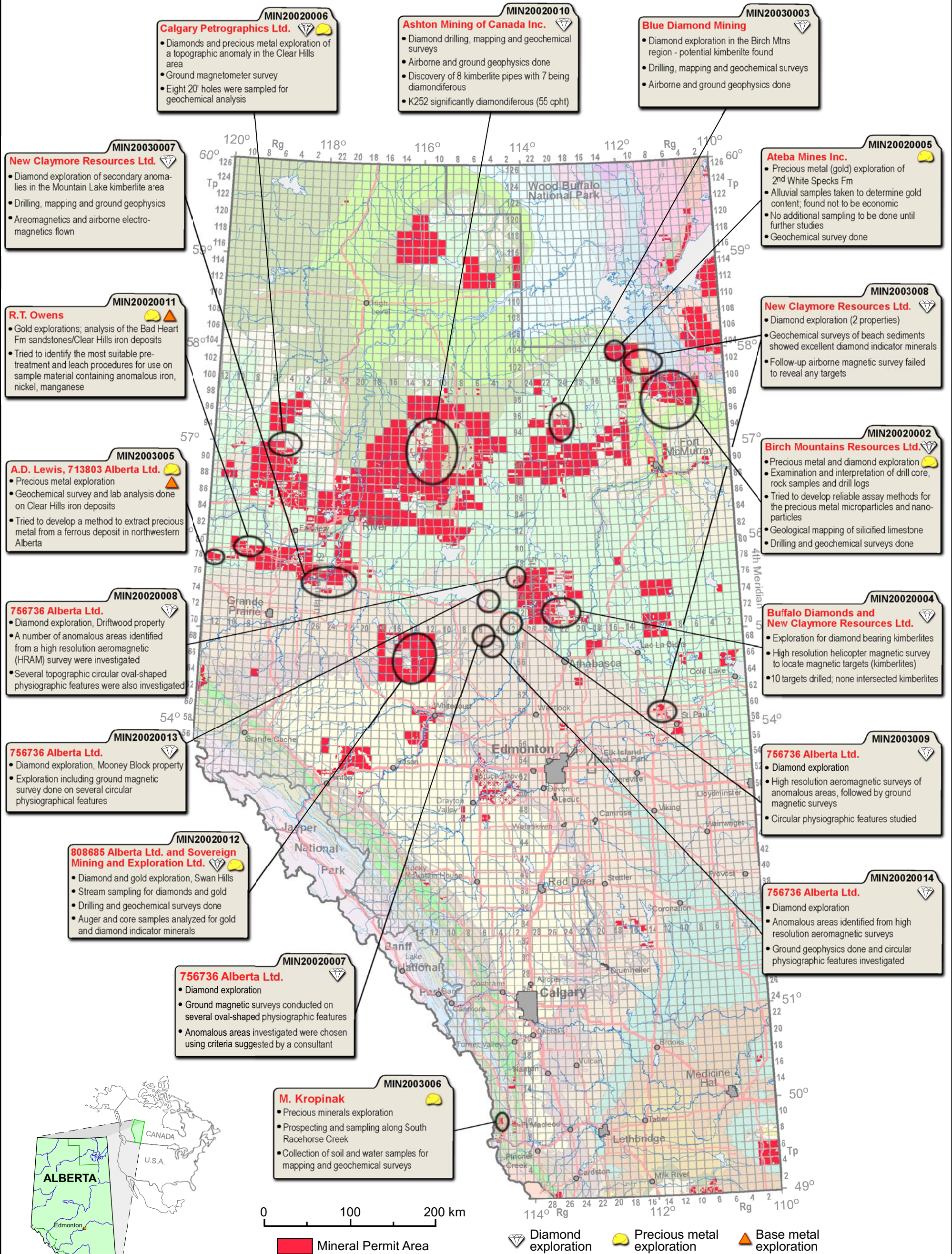


# Selected 2002 and 2003 Publicly Available Metallic and Diamond Assessment Reports in Alberta



**Note:**

- 1-Mineral Permits shown in red are those in good standing as of February 17 2005; provided courtesy of Alberta Department of Energy ([www.energy.gov.ab.ca](http://www.energy.gov.ab.ca))
- 2-Some mineral permits in existence in 2002/2003, may now have lapsed
- 3-Background geology is from AGS Map 236, Geology of Alberta