

# Leduc

[www.leduc.ca](http://www.leduc.ca)

## Welcome

## The City of Leduc

[www.leduc.ca](http://www.leduc.ca)



Welcome to our community! Leduc prides itself as having big city amenities with small town charm. Enjoy your virtual tour of our great city and we hope you come for a visit soon!!



## Area Overview

Located 15 minutes south of Edmonton, the City of Leduc is a gateway to both the Edmonton region and to the southern Alberta corridor. When it was incorporated in 1906, Leduc was a railroad town. Ten decades later, the railroad is still an important transportation connection in the community.

From its humble beginnings in 1890 with a population of five people, Leduc was officially incorporated as a city on September 1, 1983, and now boasts a population of over 16,000 – and it is still growing! As was the tradition in the time, many towns were named after missionaries to recognize their work and dedication to the region. In 1891, Lieutenant Governor Edgar Dewdney re-named the town to honour Father Hippolyte Leduc (1842-1918), an Oblate missionary who came west in 1865 and made substantial contributions in the settlement of Alberta including Leduc, St. Albert, Lac la Biche, and Calgary.

## Community Services

### Municipal

City of Leduc  
#1 Alexandra Park  
48A Street & 46 Avenue  
Leduc, Alberta  
T9E 4C4

Tel: (780) 980-7177  
Fax: (780) 980-7127  
Website: [www.leduc.ca](http://www.leduc.ca)

Tax Inquiries 980-7105  
City Clerk 980-7177  
FCSS 980-7109  
Black Gold Centre 980-7120  
Public Services Shop 980-7133  
Community Services 980-7116  
Facility Bookings 980-7118  
Fire Department 980-7275  
Garbage Info 980-7107  
Recycling Enquiries 980-7133  
City Maps 980-7158  
Finance Dept. 980-7160  
Human Resources 980-7153  
Webmaster 980-7189  
FOIP 980-7132  
Summer Programs 980-7178  
Special Events 980-7178  
Planning 980-7124  
Engineering 980-7107  
Cemeteries 980-7107  
Utilities 980-7106  
Accounts Payable 980-7104  
Billing Inquiries 980-7162

## Community Lifestyle

### Recreation

Cultural and recreational programs reflect the upbeat nature of this modern city. Year-round activities geared to all ages and lifestyles range all the way from the popular theatrical and musical productions at the Maclab Centre for the Performing Arts to the different festivals and events taking place throughout the community.

In the heart of the city is the 19-acre Alexandra Park, featuring the award-winning 44,000 square foot Leduc Civic Centre, which houses City Hall and the Leduc Public Library. The park is also the site of the ornamental Centennial Gardens, Alexandra Arena, and other recreational facilities.

The City of Leduc has some great indoor recreational facilities including the Alexandra Arena and the Black Gold Curling Club. The most prominent amenity, however, is the Black Gold Recreation Centre, a multi-purpose facility that plays host to many different water and ice sports and the ever-popular annual Black Gold Rodeo.

The Leduc Curling Club has one of the finest facilities in western Canada. Eight sheets of ice permit a full range of league competitions and the facility has attracted national championships.

In 2005, work began on a number of renovations and improvements to the Black Gold Centre, including new rink boards, new arena seating, bigger and better change rooms in both the arena and the pool, a new zero-depth leisure pool with spray toys, a new waterslide, a new 50-person hot pool, an indoor playground, and much, much more. These improvements will go a long way to ensuring that this 25-year-old facility can continue to support the recreational needs of Leduc and the surrounding communities.

In addition, Leduc has several other recreational facilities available, including several arenas, swimming pools, a variety of ball diamonds and other sports fields, and tennis courts. Fishing is also enjoyed year-round on the reservoir at Fred Johns Park, and

campground facilities are available east of Leduc at the Lion's Club campground.

For cycling, walking and jogging enthusiasts, the new Multiway features paved trails throughout the city. A stroll on the boardwalk at Telford Lake Park provides great bird-watching opportunities

Theatrical and musical events take place at the 250-seat Performing Arts Centre.

### **Community Organizations**

Leduc has over 50 organized sports, recreation and cultural clubs to choose from.

### **Religious Services**

- Alliance Church
- Anglican Church of St. Paul's
- Ebenezer Christian Reform Church
- Family Worship Centre
- First Baptist Church
- Grace Chapel
- Grace Lutheran Church Gnadenthal
- Leduc Community Baptist Church
- Leduc Fellowship Church
- Living World Lutheran Church
- Peace Lutheran Church
- St. David's United Church
- St. Michael's Catholic Church
- St. Paul's Lutheran Church
- St. Peter's Lutheran Church
- Seventh Day Adventist Church
- Temple Baptist Church
- Vision Baptist Church of Leduc

### **Special Annual Events/Attractions**

- Chamber 'Ladies Night' -- September
- National Volunteer Week Celebration -- April
- Leduc Black Gold Rodeo Days -- April
- Clean-Up Week -- May
- Leduc West Antique Society Annual Show -- May - September
- Alberta Dairy Congress Holstein and Jersey and Goat Show -- June
- Canada Day Parade -- July 1
- Country Market Strawberry Festival -- July
- Country Market Family Festival -- August
- Community Registration Day -- September
- Tri-Country Snowmobile Grass Drags -- September
- Small Business Week -- October
- Christmas Craft Sale --November

- Chamber of Commerce "Light Up" -- December

## Hospitality

### ***Accommodation***

- Airport Motel
- Airways Country Inn
- Best Western Denham Inn
- Executive International Inn
- Holiday Inn Express
- Leduc Inn
- Nisku Place Motel
- Nisku Inn and Conference Centre
- Executive Royal Inn Airport Centre
- Super 8 Motel
- Travelodge
- Waldorf Hotel
- Western Budget Motel
- Lion's Campground

### ***Restaurants***

Leduc boasts a wide range of dining establishments, from fast-food to fine dining.

## The Outdoor Experience

On July 1, 2004, the City of Leduc launched the new branding of the community, "The Outdoor Experience." This concept showcases the multitude of outdoor recreational and sporting amenities available to residents and visitors alike. From the soccer pitches, rugby fields, and ball diamonds in William F. Lede Park, canoeing and kayaking on Telford Lake, to swimming in the Kinsmen Alexandra Park Outdoor Pool, Leduc has many opportunities for everyone to enjoy the outdoors.

One of the most popular features of Leduc is the multi-way, over 35 km of paved trail that connects neighbourhoods and parks throughout the city. But the Outdoor Experience isn't just for the summer; the City of Leduc embraces the winter as well and clears off over half of the multi-way for winter enjoyment, many natural and man-made lakes and ponds are cleared for skating and hockey, and Telford Lake is a popular site for cross-country skiers. Completing the package is the vast number of outdoor markets, festivals, and other events held throughout the year. The City of Leduc is not just selling the Outdoor Experience – it is living it!

## 2005 World Masters Games

Sharing the Outdoor Experience with the World From July 22 – 31, 2005, The City of Edmonton hosted the World Masters Games with the City of Leduc as the venue for the Canoe/Kayak, Rowing, and Fast Pitch events. The city welcomed to the community the nearly 3000 athletes, their coaches and companions, and countless spectators. Not only did many Leduc residents volunteer for the games, but some even participated in this great event.

The scenic Telford Lake was transformed from a sleepy park into a multi-cultural village bustling with activity. Of the 1100 rowing participants, 75 were from Alberta, 300 – 350 from other parts of Canada, and approximately 700 from the world: USA, Russia, Switzerland, Australia, Spain, Argentina, New Zealand, Ireland, Czech Republic, Italy, Lithuania, Hungary, Peru, Germany, Chile, Poland, Brazil, Denmark, and Norway.

Leduc residents helped the city live up to its reputation of being a warm and welcoming community. Many participants found themselves "adopted" by the residents living along Telford Lake, who provided meals, water, and warm Leduc hospitality to the athletes.

Leduc's William F. Lede Park played host to the 1300 participants from Canada, the U.S. and Australia registered for the Fast Pitch Tournaments. The weather ranged from blistering hot to torrential rains, but everyone persevered. The Lede Park Ball Diamonds rose above the weather and were the only ball diamonds that were operational even after the worst rainstorms.

## World Masters Games Play Day

Having so many visitors to our city was cause for celebration and the City of Leduc, along with community partners, invited everyone to come out and have some fun at the World Masters Games Play Day and Barbeque held at Alexandra Park. Over 2000 people attended the event.

One special guest was Bailey D. Buffalo, who was recently introduced to Her Majesty Queen Elizabeth II on her recent Royal Visit for Alberta's Centennial.

Sixteen different play zones were set up to entertain kids and grown-ups alike. Cultural dancing, live music, and other activities took place on the main stage, making for a great place to sit back and enjoy the free BBQ sponsored by Leduc Sobey's.

The success of the World Masters Games could not have been achieved without the hard work and dedication of the Games Committee, volunteers, partner organizations, and the City of Leduc Staff.

## 2008 Alberta Winter Games

At a reception held at City Hall on October 26, 2005, the Honourable Gary Mar, Q.C., Minister of Community Development, announced that the City of Leduc has been chosen as the host venue for the 2008 Alberta Winter Games.

"This is an exciting opportunity for the City of Leduc and the whole region," said Mayor Greg Krischke. "After the excitement of the World Masters Games this past summer, to now have the Winter Games in our area truly establishes the City of Leduc as the Outdoor Experience."

Much time and energy went into the bid for the 2008 Winter Games. The City of Leduc attributes the success to Dale Mudryk and the Bid Committee as well as City staff and all the businesses and residents who showed their support during the Judges' visit earlier this fall.

Cooperation was the theme for this bid. Neighbouring municipalities lent their support and offered their venues to host various events. User groups who benefit through the Rapid Bingo Hall gave unanimous support for the hall to be used as a concession for the athletes. There is no question that the City of Leduc and the entire region is ready, willing, and able to play host to the 3,000 athletes, the coaches, and the spectators expected to attend the Winter Games.

Although the City of Leduc is the host venue, different events will be held in surrounding communities. The City looks forward to welcoming all the athletes, coaches, guests, and spectators for 2008 Alberta Winter Games!

## Economic Base

Leduc's economy originally revolved around agriculture and it is still at the centre of one of Alberta's richest and most diversified farming areas, dairies, prosperous livestock operations, and grain fields.

Leduc entered a new industrial era when oil was discovered a few kilometers northwest of Leduc. The highlight event which made the town world famous occurred on February 13, 1947, when Imperial Oil Limited, after drilling 137 consecutive dry holes, brought in the gusher it called Imperial Leduc No. 1. Economists called it the most important industrial event in the history of Canada.

Since that time, industrial growth related to oil patch development has made Leduc one of the fastest-growing communities in Alberta. Although the oil and gas industry was an integral component of the city's economy for many years, the proximity to planes, trains, and automobiles has made Leduc an ideal place to do business. Leduc has since grown into a self-sustaining municipality with a strong business sector.

## Economic Facts

The City of Leduc is not a community that feeds the workforce in other cities. According to the 2003 Municipal Census, of the employed residents, 39.5% work in Leduc, with 23.1% working in Edmonton, 15.3% in Nisku, and 5.9% at the Edmonton International Airport.

## Education

### Daycare/Nursery

Camelot Daycare Centre  
Fairyland Daycare  
Little Otters Daycare Centre Ltd.

### Public Schools

The public school district has seven schools including Caledonia Park School (K-9), Ecole Corinthia Park (K-8), East Elementary School (K-6), Leduc Composite High School (10-12), Leduc Junior High School (7-9), and Linsford Park School (K-6).

### **Black Gold Regional School Division #18**

The School division is headquartered in Nisku:  
Telephone: (780) 955-6025  
Website: [www.blackgold.ab.ca](http://www.blackgold.ab.ca)

### Separate Schools

The separate school district has three schools including Christ the King Junior/Senior High School (7-12), Notre Dame School (K-6), and St. Benedict School (K-6).

### **St. Thomas Aquinas Regional Separate School Division #22**

The Separate School Division is headquartered in Leduc  
Telephone: (780) 986-2500 Website: [www.starcatholic.ab.ca](http://www.starcatholic.ab.ca)

### Private Schools

Leduc Christian Academy (K-9)

## Emergency Services

### City of Leduc Protective Services

The City of Leduc Protective Services includes Leduc Fire Services and Enforcement Services.

### Leduc Fire Services

Leduc Fire Services is an integrated service that includes Emergency Communications (dispatch), Fire Rescue and Suppression, and Emergency Medical (ambulance) services. This department has a long-standing tradition of service to Leduc and area.

Leduc's history in fire fighting was formalized in 1904 with the formation of a fire brigade and the purchase of a horse-drawn Waterous pump (currently on display at the PSB). Since this time, the brigade has continued to increase the level and quality of service to the community.

At the present time, the City of Leduc Fire Services is made up of one full-time Chief, three Deputy Chiefs, full-time administrative support, 17 full-time members (13 firefighters, 4 dispatchers), 40 part-time firefighters, and four casual dispatchers. The department operates on a Platoon system (two Platoons): each Platoon consisting of an Assistant Chief, or Platoon Chief; two Captains; two

Lieutenants, and 16 firefighters.

Leduc Fire Services provides service to the City of Leduc (population approximately 17,000) and to a rural area west, south and east of Leduc (approximately 128 sq. miles) and include the following services to the community and the region:

- Fire suppression and rescue
- Extrication from motor vehicle collisions
- Emergency Medical Services (Advanced Life Support)
- Enhanced 911 call answer and Emergency Services Dispatch
- Dangerous Goods Response (first responder level)
- Water Rescue (surface)
- Ice Rescue • Fire Prevention and Education
- EMS Public Education
- Fire Investigations

## **Enforcement Services**

Enforcement Services consists of a Manager, Enforcement Services/Special Constable, two full time Special Constables, an animal control officer, and two contract personnel for speed enforcement and weed inspections. The primary function of the Special Constables is to enforce municipal bylaws and various provincial statutes as authorized by their Provincial Special Constable appointments.

## **Police Services**

The local detachment of the Royal Canadian Mounted Police (RCMP) serves the City of Leduc, New Sarepta, Beaumont, Calmar, Kavanagh, Nisku, and Leduc County. They are housed in the City of Leduc's Protective Services Building.

Telephone (780) 986-2258.

## **Health Care**

Leduc is part of the Capital Health Authority, which provides optimum health in the Capital Region.

The Leduc General Hospital, a component of Health Region #9, is a general health care facility that promotes optimum health in the community. This facility serves a region of over 40,000 rural and urban residents in the City of Leduc and Leduc County, and the towns of Beaumont, Thorsby, Calmar, and New Sarepta, and the District of Brazeau. Leduc General Hospital has full-time medical staff including general practitioners and specialists as well as consultants in anaesthesia, gynaecology, pediatrics, and pathology.

Day surgery is available for patients not requiring overnight admissions. The hospital provides a full 24-hour emergency service. Complex cases are stabilized and transferred to hospitals in Edmonton. The in-patient unit offers medical, surgical, obstetrical, palliative care, and rehabilitation services as well as a special case unit for patients who require close observation.

A full range of family and social support services are available through the City of Leduc Family and Community Support Services (FCSS).

Leduc also has a number of amenities and services available for seniors. Meals on Wheels, Senior Citizens Outreach, and the Family Aide Homemaker Program help senior citizens maintain their independence in the comfort of their own homes.

Residential and care facilities range from unique adult housing for those over 45 to ultra-modern nursing homes for the elderly. The City also provides special transportation for the handicapped and elderly.

# Key Contacts for Business Development

## Leduc City Council



**Mayor Greg Krischke**

Tel: (780) 980-7100

Email: [mayor@leduc.ca](mailto:mayor@leduc.ca)

Prior to becoming Mayor in 2004, Mayor Krischke served three terms as Alderman for the City of Leduc. Born in Saskatoon, Saskatchewan, he has been a resident of Leduc since 1960, along with his wife Jo-Anne, two children, and five grandchildren. He is the owner/operator of a local retail business, and a strong advocate of the community. Mayor Krischke continues to contribute to the community as a volunteer with the Leduc Lions Club, Leduc/Nisku Rotary Club, and the local Communities in Bloom Committee.



**Alderman Judy Archie**

Tel: (780) 980-7100

Email: [alderman@leduc.ca](mailto:alderman@leduc.ca)

Alderman Judy Archie has been a strong community champion and a passionate advocate for Leduc for over 20 years. Her involvement with the Leduc & District Chamber of Commerce since 1981 includes being the manager, and later the President, of the association. Alderman Archie is also Past Chairman of the Rotary Club Nisku-Leduc. Her volunteer experience included a strong role in Just For Fun Theatre (now Stageworks) and Parent Advisory Councils during her children's formative school years. She was also appointed by the Province as Public Member of the Registered Psychiatric Nurses Association of Alberta. Alderman Judy Archie, a resident of Leduc since 1979, and her two children are proud to call Leduc home. A strong advocate for her community, she is now serving her fifth term as Alderman, having been first elected in October 1992. Alderman Archie has a strong commitment to deal with social issues along with making our City more prosperous.





**Alderman Terry Atkinson**

Tel: (780) 980-7100

Email: [alderman@leduc.ca](mailto:alderman@leduc.ca)

Alderman Terry Atkinson is proudly serving his fourth term on Leduc City Council. Born in Northern Ireland, Alderman Atkinson came to Canada in 1954, and became a citizen in 1967. He was awarded the Queen's Golden Jubilee Medal in 2003. Despite being retired, Alderman Atkinson is always busy, including serving as President of the Leduc Music Festival Association and as a Board Member for the Alberta Music Festival Association. In his free time, he enjoys badminton and woodworking and, although listed as a hobby, Alderman Atkinson is frequently called upon to entertain with his beautiful yet powerful singing voice. Alderman Atkinson is also the Municipal Involvement Week/Student Activities Coordinator. Each fall, letters are sent out to the local schools encouraging classes studying municipal politics to arrange for a visit to the classroom from Alderman Atkinson. After the visit, the class holds their own election, and students come to the Civic Centre for a "Mock Council Meeting" in Council Chambers, then go on a tour of City Hall. It's a great opportunity for youth to learn more about their municipal government.



**Alderman Terry Lazowski**

Tel: (780) 980-7100

Email: [alderman@leduc.ca](mailto:alderman@leduc.ca)

Born in Radway, Alberta, Alderman Terry Lazowski, along with his wife and three children, has been proud to call Leduc home since 1994. Educated at Grant MacEwan College, he is now self-employed in the family oilfield business. Although Alderman Lazowski's first term on City of Leduc Council, he has been an active member of the community, including membership with the Knights of Columbus, and the Leduc Minor Hockey Association, as well as a past member of the Leduc Parks and Recreation Board.



**Alderman Dana Smith**

Tel: (780) 980-7100

Email: [alderman@leduc.ca](mailto:alderman@leduc.ca)

Alderman Smith has been a resident of Leduc for 23 years. She has been married to Brian for 18 years, and has one daughter and one son. She is a graduate of Red Deer College, and is currently employed at Christ the King School. She is also a board member with the Provincial Mental Health Board, Review Panel. She is also actively involved with her family business, Venger Group, since 1985. Alderman Smith was a founding member of the Leduc Victim Services, a past member of the Performing Arts Council, and was past chair of the Leduc Housing Authority. When her children attended elementary school, she was the chair for the Parents Council at Notre Dame School (PANDA) for two years. During her tenure, she chaired the Playground Committee project that raised \$120,000, secured volunteers, and completed the construction under budget and on time. In her spare time, Alderman Smith enjoys gardening, singing, golfing, and being outdoors. She especially enjoys family time at her cabin, which she says is a "terrific place to recharge my batteries and energy level. It is extremely peaceful." Alderman Smith loves Leduc and she and her husband love what it offers to them as a family and as residents. She takes great pride in contributing back to this fantastic community.



**Alderman Bob Thompson**

Tel: (780) 980-7100

Email: [alderman@leduc.ca](mailto:alderman@leduc.ca)

Alderman Bob Thompson has been a resident of Leduc since 1986, when he moved here from PEI with his wife, Marian, and their 2 children. He works for Air Canada at the Edmonton International Airport. Since his arrival in Leduc, Bob has been involved in many community organizations. He was a driving force in the creation of a minor football program in Leduc, which he is still involved with today. He has served on the executive committees of the Leduc & District Minor Football Association and the Leduc Otters Swim Club, and was the founder and first president of the Friends of the Alexandra Pool Society, which saved Leduc's outdoor pool from demolition in 1995. Bob has also been involved with Just for Fun Theatre (now Stageworks) and Leduc Minor Soccer. He has been recognized as a Coach of the Year by both the City of Leduc and by Football Alberta, and was awarded a Community Contribution Award by the Leduc & District Chamber of Commerce in 1995. Since 2001, Bob has also been the Chairman of the City of Leduc Parks, Recreation & Culture Board. Bob served a term as Alderman from 1998-2001, and is very much enjoying his new term on council. He continues to be an advocate for youth and recreation in the community and welcomes this opportunity to make Leduc an

even better place to live, work and play.



**Alderman Bob Young**

Tel: (780) 980-7100

Email: [alderman@leduc.ca](mailto:alderman@leduc.ca)

Alderman Bob Young, oldest son of John and Bev Young, has been a proud resident of Leduc since 1960. He and his wife Susan, married since 1978, have two children, Laura and John. Alderman Young received his education in Leduc, Red Deer College, and at the University of Alberta, has been a teacher since 1979, and is currently working at the Leduc Junior High School. Although this is his first term on Leduc City Council, Alderman Young has been a very active member of the community for many years. He was instrumental in the design and construction of the William F. Lede Diamonds, and was named Leduc's Citizen of the Year in 2000.

**City Administration Contacts:**

**Paul Benedetto, City Manager**

Tel: (780) 980-7101

Email: [krobins@leduc.ca](mailto:krobins@leduc.ca)

The Chief Administrative Officer (CAO) is the head of the organization, is responsible for overseeing the entire City Administration, and acts as the liaison between Administration and the elected Council. He has three General Managers reporting directly to him: General Manager, Community Services; General Manager, Finance & Corporate Services/City Solicitor; and General Manager Operations/City Engineer.

Information on the role and responsibilities of the Chief Administrative Officer are outlined in the Municipal Government Act.

**Leduc-Nisku Economic Development Authority**



**Pat Klak, Executive Director**

6422 50 Street Leduc, AB

T9E 7K9

Tel: (780) 986-9538

Fax: (780) 986-1121

Website: [www.internationalregion.com](http://www.internationalregion.com)

### **Leduc & District Chamber of Commerce**

6420 50 Street Leduc, AB

T9E 7K9

Tel: (780) 986-5454

Fax: (780) 986-8108

Website: [www.leduc-chamber.com](http://www.leduc-chamber.com)

## **Provincial Contact:**

### **George Rogers MLA for Leduc-Beaumont-Devon**

Constituency Office

#54, 5203-50 Street

Leduc, AB

T9E 6Z5

Phone: (780) 986-4652

Fax: (780) 986-5228

[leduc.beaumontdevon@assembly.ab.ca](mailto:leduc.beaumontdevon@assembly.ab.ca)

Legislature Office

637 Legislature Annex

9718 107 Street

Edmonton, AB

T5K 1E4

Phone: (780) 422-2229

Fax: (780) 415-0951

George Rogers was elected to his first term as the Member of the Legislative Assembly for Leduc-Beaumont-Devon on November 22, 2004. Prior to running for MLA, Mr. Rogers served two terms as an Alderman for City of Leduc Council (1992-1998). In October of 1998, he was elected for mayor and re-elected in October 2001.

## **Federal Contact:**

### **James Rajotte, Member of Parliament**

Political Affiliation: Conservative Caucus

Constituency: Edmonton-Leduc

Tel: (613) 992-3594 Fax: (613) 992-3616

Email: [Rajotte.J@parl.gc.ca](mailto:Rajotte.J@parl.gc.ca)

Hill Office: House of Commons

Ottawa, ON

K1A 0A6

Constituency Office:

204, 596 Riverbend Square

Edmonton, AB

T6R 2E3

## **Location**

Alberta's primary highway, Queen Elizabeth II Highway, passes through Leduc north to Edmonton and south to Calgary and the Rocky Mountains. With its proximity to the Edmonton International Airport, Leduc is a gateway not only to Alberta, but also the world.

## Post Secondary Education

The City of Leduc is within close commuting distance from several post-secondary institutions including the University of Alberta, the Academy of Learning, MacEwan College, and the Northern Alberta Institute of Technology (NAIT).

## Taxation

---

	<u>Residential/Farmland</u>	<u>Non-Residential</u>
<b>2005</b>		
Municipal Tax Rate	8.732	15.521
Education - Alberta School Foundation Fund Tax Rate	3.794	5.512
Education Opted Out Tax Rate	3.7940	5.512
Allowance for Non-Collection of Requisitioned Taxes	.057	.057
Seniors Lodge Accommodation Tax Rate	.060	.060

---

### Mill Rates [2006]

- Residential - Public 12.64
- Residential - Separate 12.64
- Commercial - Public 21.15
- Commercial - Separate 21.15

## Transportation

### Air Services



The Edmonton International Airport, only 5 km from Leduc, has a full range of commercial and airfreight services. The airport is responsible for over 2,000,000 passengers and 30,000 tonnes of freight a year. Direct air service links northern Albertans to points in Canada and throughout the world.

### Rail Services

Leduc is served by a Canadian National Railway north-south main line, which links the area to all major rail systems in North America.

### Highways

Leduc is adjacent to Queen Elizabeth II Highway, the main north-south route linking Edmonton to Calgary and beyond. On the east-

west axis, there are excellent traffic links as well, particularly Highway 39, which connects to Highway 60.

- Albert Abel Trucking Ltd.
- Allen's Transport Ltd.
- Brunet Pierre Trucking
- Gagnon RG Trucking Ltd.
- Inway Transport
- Johannsen Transport Ltd.
- Leduc Truck Service Ltd.
- Morrell's Trucking
- Mullen Trucking Ltd.
- TDK Alberta Ltd.

### **Bus Services**

Regularly scheduled inter-community service is available through Greyhound Lines of Canada.

### **Couriers and Taxis**

Central City Taxi Ltd., LA Taxi Service Ltd., Leduc-Nisku Taxi, and Sunrise Cabs provide local taxi service to Leduc residents.

Several local and regional courier companies also serve Leduc.

## **Utilities**

### **Electrical Power**

EPCOR

10065 Jasper Avenue

Edmonton, Alberta

Telephone: 780-412-3414

### **Natural Gas**

AltaGas Utilities

Box 428, 5509 - 45 Street

Leduc, Alberta

Telephone: 780-986-3443

### **Telephone**

Telus Corporation

Telephone: 780-498-7300

### **Water Supply**

Leduc/Nisku is serviced with water through the Capital Region Southwest Water Commission. The source of water is the North Saskatchewan River.

### **Waste Management**

Leduc is connected to the main 42" sanitary sewer trunk line, which is connected to the Capital Region Sewage Treatment Plant.

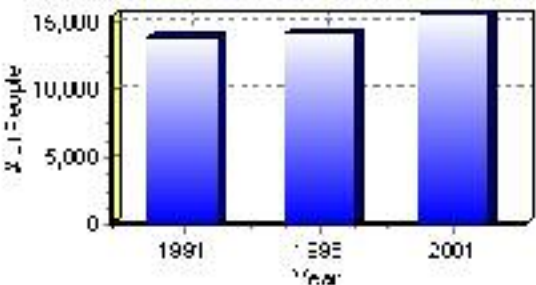
# Population

## Total Population

Population 2004*	15,630
Population 2003*	15,630
Population 2002*	15,032
Population 2001**	15,030
Population 2000*	14,540
Population 1996**	14,305
Population 1991**	13,970
Population % change 1991-1996	2.34%
Population % change 1996-2001	4.84%

\* Source: Official Population List, Alberta Municipal Affairs  
\*\* Source: Statistics Canada 1991, 1996, & 2001 Census

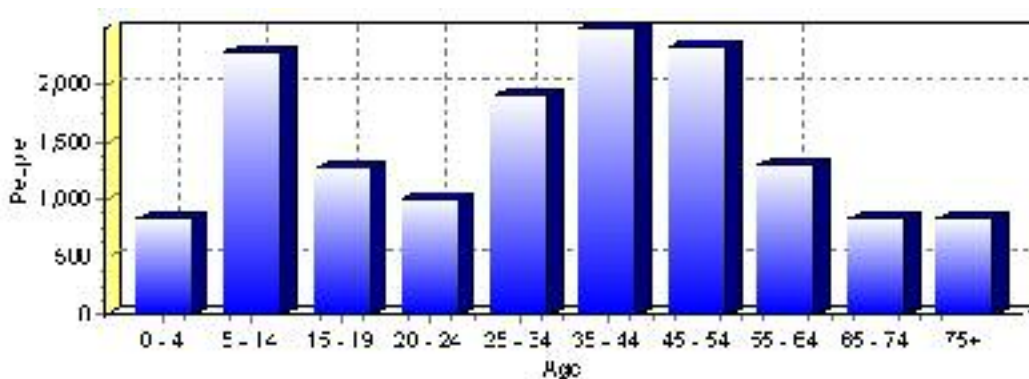
## Total Population 1991-2001



Population by Age and Gender	1996 Male	1996 Female	1996 Total	2001 Male	2001 Female	2001 Total
Age 0 - 4	515	500	1,015	440	400	840
Age 5 - 14	1,220	1,110	2,330	1,190	1,080	2,270
Age 15 - 19	585	595	1,180	670	600	1,270
Age 20 - 24	510	475	985	515	490	1,005
Age 25 - 34	990	995	1,985	930	965	1,895
Age 35 - 44	1,200	1,275	2,475	1,215	1,265	2,480
Age 45 - 54	1,005	970	1,975	1,150	1,170	2,320
Age 55 - 64	475	480	955	635	665	1,300
Age 65 - 74	335	375	710	405	420	825
Age 75 and older	240	440	680	285	540	825
Total All Persons	7,085	7,220	14,305	7,440	7,595	15,035

Source: Statistics Canada 1996 & 2001 Census (numbers may not add up due to rounding)

### Leduc Population by Age Group (2001)



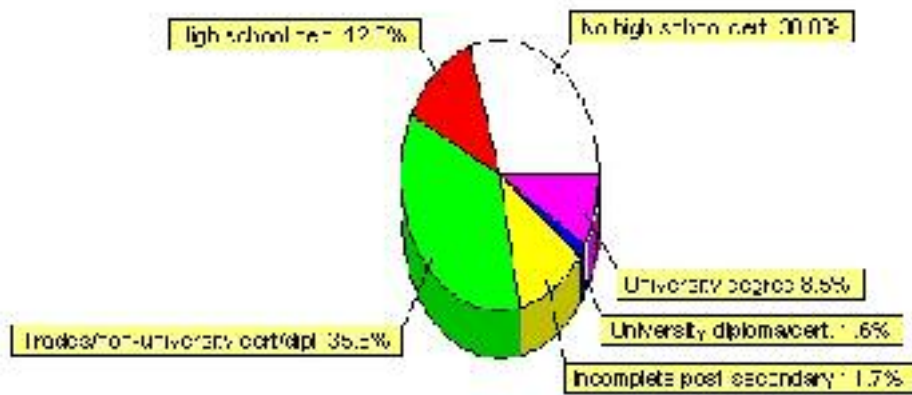


## Education Statistics

Highest level of schooling for Population 20yrs and older	2001	%
People without high school certificates	3,120	30.04%
People with high school certificates	1,305	12.57%
People with trades or non-university certificate or diploma	3,695	35.58%
People with post-secondary education (not completed)	1,210	11.65%
People with university diploma/certificate	165	1.59%
People with university degree	885	8.52%
Total Population 20 years and older	10,385	100.00%

Source: Statistics Canada 2001 Census (numbers may not add up due to rounding)

### Leduc Highest Level of Schooling 2001



Population with Post Secondary Qualifications	1996	%	2001	%
Agriculture and biological sciences	195	4.80%	180	3.76%
Commerce, management and business administration	785	19.33%	865	18.08%
Educational, recreational and counseling services	490	12.07%	550	11.49%
Engineering and applied science tech. and trades	1,380	33.99%	1,855	38.77%
Engineering and applied sciences	80	1.97%	60	1.25%
Fine and applied arts	225	5.54%	270	5.64%
Health professionals, science and technologies	580	14.29%	560	11.70%
Humanities and related fields	55	1.35%	95	1.99%
Mathematics and physical sciences	45	1.11%	45	0.94%
Social sciences and related fields	240	5.91%	290	6.06%
Other and/or no specialization	0	0.00%	10	0.21%
Total people with post secondary qualifications	4,060	100.00%	4,785	100.00%
Females with post-secondary qualifications	1,825	44.95%	2,140	44.72%
Males with post-secondary qualifications	2,235	55.05%	2,645	55.28%

Source: Statistics Canada 1996 & 2001 Census (numbers may not add up due to rounding)

## Labour Force

Labour force by activity	1996	2001
In the labour force, both sexes	7,845	8,730
Not in the labour force, both sexes	2,855	2,930
Total population 15 and over	10,700	11,660
Employed, both sexes	7,250	8,360
Unemployed, both sexes	600	370
Participation rate, both sexes	73.00%	75.00%
Unemployment rate, both sexes	7.00%	4.00%

Source: Statistics Canada 1996 & 2001 Census (numbers may not add up due to rounding)

Labour Force by Industry Division	1996	% of total	2001	% of total
Agriculture	140	1.81%	55	0.63%
Mining	545	7.03%	585	6.73%
Manufacturing	915	11.80%	1,090	12.54%
Construction	645	8.32%	625	7.19%
Transportation. & Utilities	835	10.77%	890	10.24%
Retail and Wholesale	1,300	16.76%	1,310	15.07%
Finance	355	4.58%	400	4.60%
Business & Community Services	2,355	30.37%	3,450	39.70%
Public Administration	325	4.19%	310	3.57%
Total All Industries	7,755	100.00%	8,690	100.00%

Source: Statistics Canada 1996 & 2001 Census (numbers may not add up due to rounding)

### Leduc Labour Force By Industry - 2001



Labour Force by Major Occupational Groups	1996	%	2001	%
Management occupations	585	7.54%	775	8.92%
Business, Finances and administrative occupations	1,630	21.02%	1,725	19.85%
Natural and applied sciences and related occupations	320	4.13%	405	4.66%
Health occupations	375	4.84%	370	4.26%
Occupations in social science; education; government and religion	275	3.55%	505	5.81%
Occupations in art; culture; recreation and sport	140	1.81%	90	1.04%

Sales and service occupations	2,045	26.37%	2,375	27.33%
Trades; transport; equipment operators and related occupations	1,460	18.83%	1,750	20.14%
Occupations unique to primary industry	350	4.51%	300	3.45%
Occupations unique to processing; manufacturing and utilities	570	7.35%	400	4.60%
Occupations not elsewhere classified	95	1.23%	35	0.40%
Total - All Occupations (major groups)	7,755	100.00%	8,690	100.00%
Females - All Occupations	3,515	45.33%	4,115	47.35%
Males - All Occupations	4,240	54.67%	4,580	52.70%

Source: Statistics Canada 1996 & 2001 Census (numbers may not add up due to rounding)

---

## Income

<b>Family Income (Number of Families)</b>	<b>1996</b>	<b>%</b>	<b>2001</b>	<b>%</b>
less than \$19,999	210	6.07%	245	7.31%
\$20,000 - \$39,999	695	20.09%	650	19.40%
\$40,000 - \$59,999	925	26.73%	865	25.82%
\$60,000 and over	1,630	47.11%	1,725	51.49%
Total number of families	3,460	100.00%	3,485	104.03%
Average family income	\$64,005		\$73,670	
Median family income	\$57,419		\$66,986	

Source: Statistics Canada 1996 & 2001 Census (numbers may not add up due to rounding)

<b>Household Income (Number of Households)</b>	<b>1996</b>	<b>%</b>	<b>2001</b>	<b>%</b>
less than \$19,999	790	16.11%	640	11.94%
\$20,000 - \$39,999	1,105	22.53%	955	17.82%
\$40,000 - \$59,999	1,180	24.06%	1,020	19.03%
\$60,000 and over	500	10.19%	2,745	51.21%
Total number of households	4,905	100.00%	5,360	100.00%
Average household income	\$55,446		\$67,493	
Median household income	\$49,107		\$60,592	

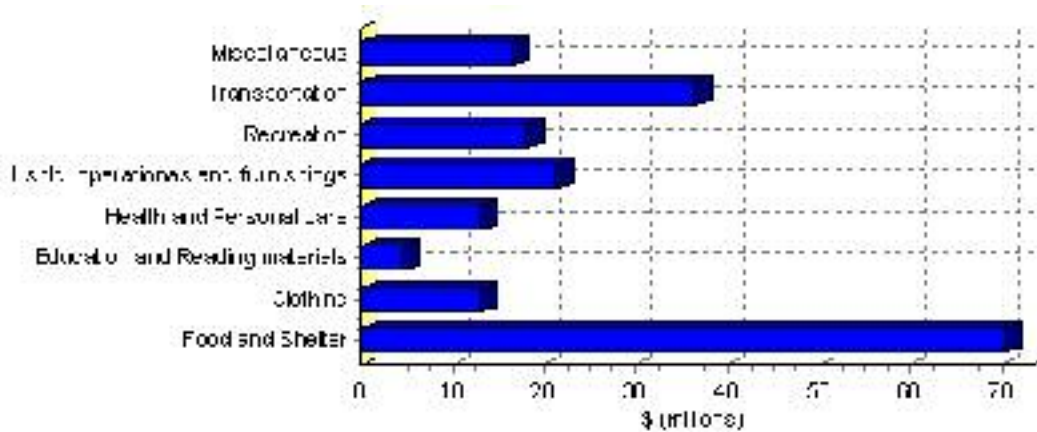
Source: Statistics Canada 1996 & 2001 Census (numbers may not add up due to rounding)

# Family Expenditure

Expenditure Category	1992	% of total	1996	% of total
Food and Shelter	\$57,046,000	36.39%	\$70,438,022	36.36%
Clothing	\$11,220,535	7.16%	\$13,233,595	6.83%
Education and Reading materials	\$3,733,345	2.38%	\$4,501,090	2.32%
Health and Personal care	\$9,559,330	6.10%	\$13,088,249	6.76%
Hshld. operations and furnishings	\$17,419,490	11.11%	\$21,364,443	11.03%
Recreation	\$13,978,865	8.92%	\$18,110,128	9.35%
Transportation	\$31,795,025	20.28%	\$36,448,796	18.81%
Miscellaneous	\$11,961,920	7.63%	\$16,549,560	8.54%
Total Current Consumption	\$156,744,775	100.00%	\$193,733,883	100.00%
Total # of Households	4,600		4,906	
Average Consumption per Household	\$34,075		\$39,489	

Source: Statistics Canada Family Expenditure Survey 1992 & 1996 (numbers may not add up due to rounding).

## Leduc Family Expenditures (1996)

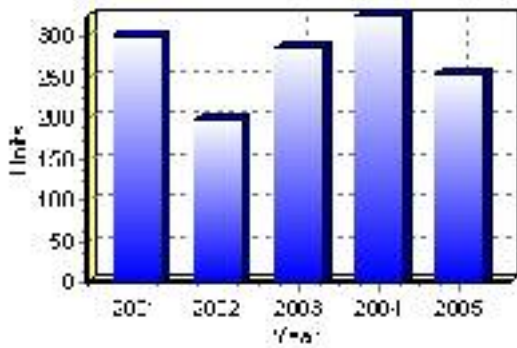


# Building Permits

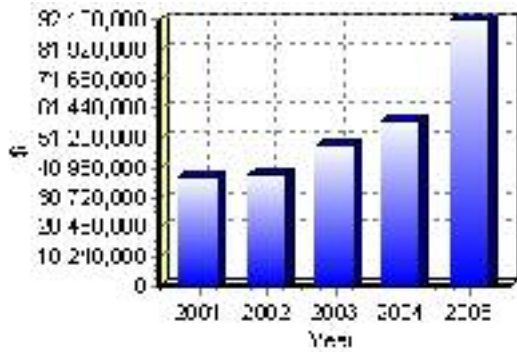
Total Building Permit Values	2001	2002	2003	2004	2005
Building Permits Value, Commercial	\$4,625,000	\$7,401,000	\$5,868,000	\$9,927,000	\$33,253,000
Building Permits Value, Industrial	\$4,804,000	\$2,589,000	\$360,000	\$8,297,000	\$9,329,000
Building Permits Value, Institutional	\$140,000	\$1,362,000	\$8,249,000	\$6,275,000	\$4,708,000
Building Permits Value, Residential	\$28,480,000	\$27,815,000	\$34,386,000	\$33,236,000	\$44,984,000
Building Permits Value, Total	\$38,049,000	\$39,167,000	\$48,863,000	\$57,735,000	\$92,274,000
Total Housing Starts	301	199	287	325	255

Source: Statistics Canada 2000-2004 Building Permits (numbers may not add up due to rounding)

## Total Housing Starts



## Value of Building Permits



## Dwellings

<b>Occupied Private Dwellings by Type</b>	<b>1996</b>	<b>% of total</b>	<b>2001</b>	<b>% of total</b>
Apartments	685	13.97%	740	13.81%
Detached Duplexes	30	0.61%	25	0.47%
Movable Dwellings	130	2.65%	155	2.89%
Other single attached house	10	0.20%	5	0.09%
Row and semi-detached house	365	7.44%	480	8.96%
Single-detached house	3,680	75.03%	3,950	73.69%
Total number of occupied private dwellings	4,905	100.00%	5,360	100.00%
Private dwellings, owned	3,710	75.64%	4,150	77.43%
Private Dwellings, rented	1,200	24.46%	1,215	22.67%

Source: Statistics Canada 1996 & 2001 Census (numbers may not add up due to rounding)

<b>Private Dwellings by Period of Construction</b>	<b># of Dwellings</b>	<b>% of total</b>
Period of construction, before 1946	175	3.27%
Period of construction, 1946 - 1960	245	4.58%
Period of construction, 1961 - 1970	740	13.82%
Period of construction, 1971 - 1980	2,505	46.78%
Period of construction, 1981 - 1990	860	16.06%
Period of construction, 1991 - 2001	830	15.50%
Total number of private dwellings constructed	5,355	100.00%

Source: Statistics Canada 2001 Census (numbers may not add up due to rounding)

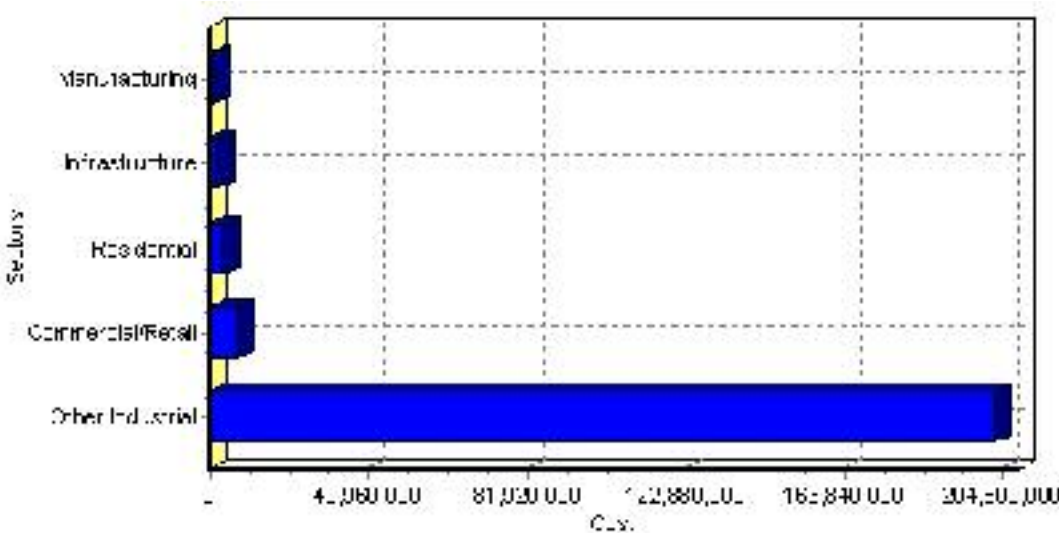
# Projects

## Summary of Projects in Leduc as of September 2006

Project Sector	Number of Projects	Project Cost
Other Industrial	3	\$202,480,000
Commercial/Retail	4	\$7,450,000
Residential	1	\$3,700,000
Infrastructure	1	\$1,900,000
Manufacturing	1	\$1,200,000
Total	10	\$216,730,000

This inventory lists projects in Alberta that have recently been completed, are under construction, or are proposed to start construction. Not all projects are listed due to reasons of confidentiality and/or due to information not being available at the time of printing. Project data is obtained from public information sources, where possible, this data has been verified with the project proponent/developer, users of the Inventory may wish to confirm project data with the proponent/developer. The inventory does not breakdown project expenditures by any given year. The cost of a project is the value of expenditures expected over all phases of project construction, which may span over two or more years. Cost of projects listed in the Inventory are estimated values only. Source: Alberta Economic Development, 2004.

## Value of Projects by Sector (as of September 2006)



Project Status	Number of Projects	Project Cost
Nearing Completion	1	\$4,000,000
Proposed	1	\$200,000,000
Under Construction	8	\$12,730,000
Total	10	\$216,730,000

This inventory lists projects in Alberta that have recently been completed, are under construction, or are proposed to start construction. Not all projects are listed due to reasons of confidentiality and/or due to information not being available at the time of printing. Project data is obtained from public information sources, where possible, this data has been verified with the project proponent/developer, users of the Inventory may wish to confirm project data with the proponent/developer. The inventory does not breakdown project expenditures by any given year. The cost of a project is the value of expenditures expected over all phases of project construction, which may span over two or more years. Cost of projects listed in the Inventory are estimated values only. Source: Alberta Economic Development, 2004.



## Largest Projects in Leduc as of September 2006

Company Name	Project Description	Project Location	Project Cost	Construction Schedule	Status
Prem Singhmar	Development of Light Industrial and Commercial Land	Leduc	\$200,000,000	-	Proposed
Canadian Tire	New Store	Leduc	\$4,000,000	2006-2006	Nearing Completion
City of Leduc	Leduc Affordable Housing Project	Leduc	\$3,700,000	2006-2007	Under Construction
City of Leduc	Road Widening Under Highway 2 Overpass	Leduc	\$1,900,000	2006-2006	Under Construction
Thermak Investments Inc	Multi Tenant Warehouse	Leduc	\$1,400,000	2006-2006	Under Construction
Peavey Mart	Retail Building	Leduc	\$1,350,000	2006-2006	Under Construction
Apsen Trailer Co.	Fabrication Shop	Leduc	\$1,200,000	2006-2006	Under Construction
Staples	Retail Building	Leduc	\$1,100,000	2006-2006	Under Construction
A Plus Investments Ltd.	Office & Shop	Leduc	\$1,080,000	2006-2006	Under Construction
Ian Beatte Professional Realty	Strip Mall	Leduc	\$1,000,000	2006-2006	Under Construction

Disclaimer: Information in this profile has been provided from a variety of external sources. Although every effort has been made to ensure the accuracy, currency and reliability of the content and data, AlbertaFirst.com Ltd. accepts no responsibility in this regard.

© AlbertaFirst.com Ltd., 2006.