

Alberta Population

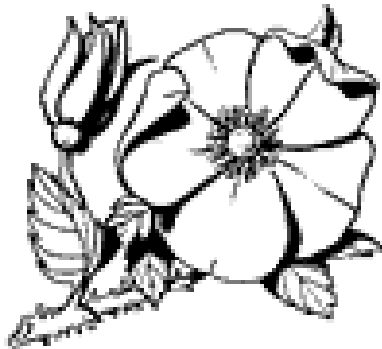


Table 28

Alberta Population - Ten Year Comparison

Year	Population
1992	2,543,137
1993	2,574,890
1994	2,601,282
1995	2,615,527
1996	2,636,489
1997	2,695,474
1998	2,730,818
1999	2,819,423
2000	2,879,743
2001	2,907,882

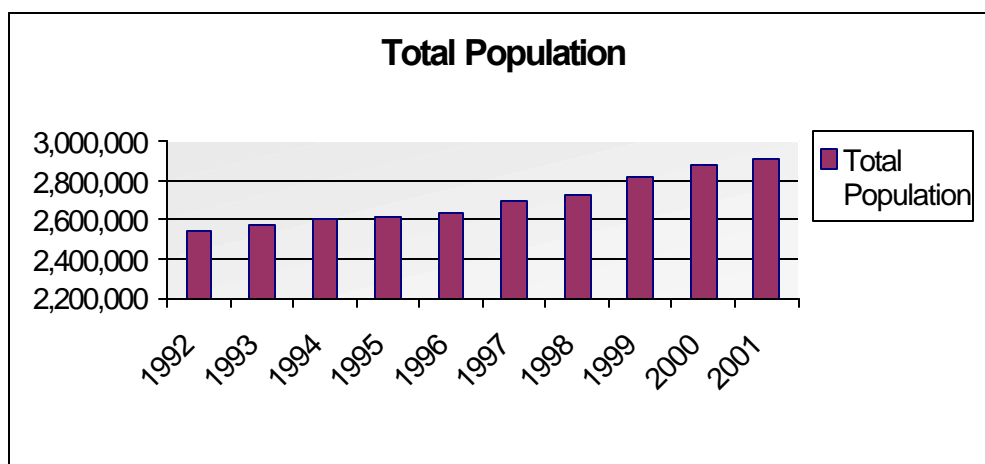


Table 29

Alberta Municipalities of Population 1,000 or Greater, 2001

Municipality Name	Population 2001	Birth by Residence of Mother	Rate/ 1000	Marriages by Place of Event	Rate/ 1000	Deaths by Residence of Decreased	Rate/ 1000
Airdrie	19165	243	12.68	76	3.97	90	4.70
Athabasca	2313	53	22.91	27	11.67	54	23.35
Banff	7716	63	8.16	546	70.76	30	3.89
Barrhead	4239	48	11.32	48	11.32	92	21.70
Bassano	1272	35	27.52	7	5.50	25	19.65
Beaumont	6986	85	12.17	41	5.87	16	2.29
Beaverlodge	1997	45	22.53	16	8.01	18	9.01
Black Diamond	1857	16	8.62	8	4.31	15	8.08
Blackfalds	3144	64	20.36	24	7.63	5	1.59
Bon Accord	1493	26	17.41	8	5.36	12	8.04
Bonnyville	5397	144	26.68	43	7.97	57	10.56
Bow Island	1688	29	17.18	6	3.55	25	14.81
Bowden	1014	28	27.61	11	10.85	17	16.77
Brooks	11584	227	19.60	83	7.17	80	6.91
Bruderheim	1198	12	10.02	2	1.67	10	8.35
Calgary	876519	11060	12.62	4678	5.34	4327	4.94
Calmar	1797	46	25.60	15	8.35	17	9.46
Camrose	15253	138	9.05	109	7.15	192	12.59
Canmore	10843	124	11.44	122	11.25	45	4.15
Cardston	3417	117	34.24	322	94.23	68	19.90
Carstairs	2086	25	11.98	9	4.31	21	10.07
Chestermere	3742	45	12.03	13	3.47	7	1.87
Claresholm	3427	31	9.05	23	6.71	62	18.09
Coaldale	5941	112	18.85	34	5.72	52	8.75
Coalhurst	1465	32	21.84	5	3.41	13	8.87
Cochrane	11173	178	15.93	89	7.97	93	8.32
Cold Lake	12128	187	15.42	74	6.10	41	3.38
Coronation	1166	17	14.58	6	5.15	18	15.44
Crossfield	2003	33	16.48	16	7.99	24	11.98
Devon	4808	65	13.52	85	17.68	18	3.74
Didsbury	3782	58	15.34	21	5.55	58	15.34
Drayton Valley	5883	121	20.57	41	6.97	62	10.54
Drumheller	7833	69	8.81	44	5.62	97	12.38
Edmonton	648284	8001	12.34	3670	5.66	4290	6.62
Edson	7815	144	18.43	68	8.70	45	5.76
Elk Point	1492	27	18.10	10	6.70	20	13.40
Fairview	3316	54	16.28	29	8.75	43	12.97
Falher	1149	23	20.02	4	3.48	14	12.18
Fort Macleod	3034	43	14.17	18	5.93	56	18.46
Fort McMurray	42156	613	14.54	201	4.77	90	2.13
Fort Saskatchewan	13346	130	9.74	81	6.07	77	5.77
Fox Creek	2321	39	16.80	6	2.59	1	0.43
Gibbons	2748	36	13.10	13	4.73	12	4.37
Grande Cache	4441	52	11.71	24	5.40	16	3.60
Grande Prairie	35962	684	19.02	249	6.92	175	4.87
Grimshaw	2661	52	19.54	15	5.64	11	4.13
Hanna	3001	25	8.33	19	6.33	46	15.33
High Level	3093	96	31.04	13	4.20	12	3.88
High Prairie	2907	97	33.37	27	9.29	41	14.10
High River	8554	133	15.55	65	7.60	95	11.11
Hinton	9961	141	14.16	78	7.83	31	3.11
Innisfail	6958	83	11.93	42	6.04	71	10.20
Jasper	4691	50	10.66	230	49.03	12	2.56
Killam	1048	14	13.36	12	11.45	21	20.04
Lac La Biche	2611	100	38.30	44	16.85	44	16.85

Table 29

Continued

Municipality Name	Population 2001	Birth by Residence of Mother	Rate/ 1000	Marriages by Place of Event	Rate/ 1000	deaths by Residence of Decreased	Rate/ 1000
Lacombe	9252	124	13.40	56	6.05	84	9.08
Lamont	1581	14	8.86	12	7.59	47	29.73
Leduc	14540	160	11.00	98	6.74	100	6.88
Legal	1095	18	16.44	28	25.57	9	8.22
Lethbridge	68712	779	11.34	455	6.62	572	8.32
Lloydminster	11317	17	1.50	99	8.75	53	4.68
Magrath	1867	36	19.28	16	8.57	27	14.46
Manning	1295	35	27.03	19	14.67	9	6.95
Mayerthorpe	1669	34	20.37	13	7.79	43	25.76
Medicine Hat	50152	604	12.04	322	6.42	478	9.53
Millet	1894	16	8.45	19	10.03	15	7.92
Morinville	6226	109	17.51	46	7.39	39	6.26
Nanton	1923	27	14.04	11	5.72	33	17.16
Okotoks	9953	146	14.67	51	5.12	47	4.72
Olds	6230	64	10.27	54	8.67	94	15.09
Oyen	1074	17	15.83	7	6.52	17	15.83
Peace River	6536	128	19.58	48	7.34	42	6.43
Penhold	1625	31	19.08	8	4.92	10	6.15
Picture Butte	1669	54	32.35	9	5.39	16	9.59
Pincher Creek	3659	63	17.22	37	10.11	46	12.57
Ponoka	6149	58	9.43	46	7.48	102	16.59
Provost	2045	47	22.98	8	3.91	27	13.20
Rainbow Lake	1138	25	21.97	1	0.88	3	2.64
Raymond	3056	57	18.65	14	4.58	42	13.74
Red Deer	68308	888	13.00	493	7.22	425	6.22
Redcliff	4104	67	16.33	12	2.92	26	6.34
Redwater	2120	14	6.60	9	4.25	23	10.85
Redwood Meadows	1141	7	6.13	10	8.76	1	0.88
Rimbey	2106	29	13.77	23	10.92	45	21.37
Rocky Mountain House	6188	111	17.94	87	14.06	83	13.41
Sexsmith	1615	30	18.58	21	13.00	10	6.19
Sherwood Park	45629	763	16.72	288	6.31	224	4.91
Slave Lake	6553	126	19.23	40	6.10	15	2.29
Smoky Lake	1087	20	18.40	12	11.04	27	24.84
Spirit River	1112	16	14.39	5	4.50	22	19.78
Spruce Grove	15069	211	14.00	125	8.30	99	6.57
St. Albert	51716	539	10.42	218	4.22	234	4.52
St. Paul	4970	89	17.91	55	11.07	60	12.07
Stettler	5220	61	11.69	37	7.09	69	13.22
Stony Plain	8274	114	13.78	97	11.72	101	12.21
Strathmore	7455	97	13.01	41	5.50	60	8.05
Sundre	2190	32	14.61	30	13.70	36	16.44
Swan Hills	2030	25	12.32	3	1.48	5	2.46
Sylvan Lake	7008	121	17.27	49	6.99	28	4.00
Taber	7331	129	17.60	50	6.82	77	10.50
Three Hills	3375	32	9.48	25	7.41	41	12.15
Tofield	1726	22	12.75	11	6.37	33	19.12
Turner Valley	1581	19	12.02	10	6.33	10	6.33
Two Hills	1045	17	16.27	9	8.61	27	25.84
Valleyview	1944	62	31.89	21	10.80	22	11.32
Vauxhall	1011	31	30.66	14	13.85	6	5.93
Vegreville	5337	56	10.49	46	8.62	78	14.61
Vermilion	4356	47	10.79	37	8.49	51	11.71
Viking	1081	24	22.20	7	6.48	35	32.38
Vulcan	1677	25	14.91	6	3.58	24	14.31
Wainwright	5219	73	13.99	49	9.39	60	11.50
Wembley	1542	29	18.81	10	6.49	14	9.08
Westlock	4817	62	12.87	54	11.21	82	17.02
Wetaskiwin	10959	147	13.41	74	6.75	122	11.13
Whitecourt	8008	173	21.60	44	5.49	26	3.25