

Alberta Population

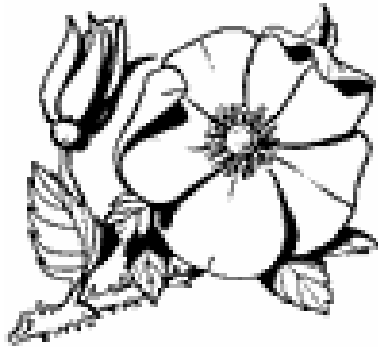


Table 31

Alberta Population - Ten Year Comparison

Year	Population
1996	2,636,489
1997	2,695,474
1998	2,730,818
1999	2,819,423
2000	2,879,743
2001	2,907,882
2002	2,994,387
2003	3,034,362
2004	3,066,257
2005	3,182,178

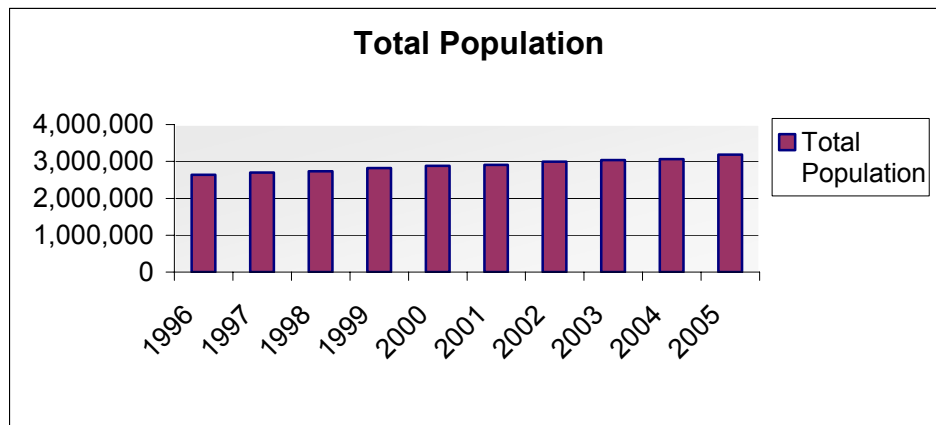


Table 32

Alberta Municipalities of Population 1,000 or Greater, 2005

Municipality	Population 2005	Birth by Residence of Mother	Rate/1000	Marriage by Place of Event	Rate/1000	Death by Residence of	
						Deceased	Rate/1000
Airdrie	27069	373	13.78	70	2.59	81	2.99
Athabasca	2415	50	20.70	25	10.35	41	16.98
Banff	8352	76	9.10	634	75.91	26	3.11
Barrhead	4213	48	11.39	41	9.73	96	22.79
Bassano	1320	25	18.94	8	6.06	13	9.85
Beaumont	8361	94	11.24	30	3.59	13	1.55
Beaverlodge	2176	38	17.46	18	8.27	24	11.03
Bentley	1094	15	13.71	12	10.97	19	17.37
Black Diamond	1866	20	10.72	8	4.29	31	16.61
Blackfalds	4373	112	25.61	16	3.66	15	3.43
Bon Accord	1532	20	13.05	10	6.53	7	4.57
Bonnyville	5896	138	23.41	36	6.11	71	12.04
Bow Island	1704	26	15.26	9	5.28	26	15.26
Bowden	1174	18	15.33	8	6.81	16	13.63
Brooks	11604	237	20.42	72	6.20	86	7.41
Bruderheim	1202	19	15.81	4	3.33	11	9.15
Calgary	956078	12182	12.74	4638	4.85	4573	4.78
Calmar	1992	36	18.07	6	3.01	11	5.52
Camrose	15850	177	11.17	107	6.75	189	11.92
Canmore	11442	142	12.41	197	17.22	47	4.11
Cardston	3475	93	26.76	242	69.64	59	16.98
Carstairs	2501	39	15.59	15	6.00	21	8.40
Chestermere	7904	78	9.87	13	1.64	5	0.63
Claresholm	3622	42	11.60	16	4.42	55	15.18
Coaldale	6104	100	16.38	37	6.06	52	8.52
Coalhurst	1493	34	22.77	4	2.68	14	9.38
Cochrane	12688	174	13.71	64	5.04	77	6.07
Cold Lake	11595	195	16.82	77	6.64	66	5.69
Coronation	1074	19	17.69	2	1.86	18	16.76
Crossfield	2603	26	9.99	13	4.99	18	6.92
Devon	6095	79	12.96	55	9.02	25	4.10
Didsbury	3932	51	12.97	27	6.87	57	14.50
Drayton Valley	6210	113	18.20	49	7.89	59	9.50
Drumheller	7785	70	8.99	51	6.55	83	10.66
Eckville	1019	16	15.70	4	3.93	23	22.57
Edmonton	712391	8429	11.83	3954	5.55	4484	6.29
Edson	8365	121	14.47	37	4.42	66	7.89
Elk Point	1440	29	20.14	8	5.56	28	19.44
Fairview	3150	61	19.37	25	7.94	49	15.56
Falher	1109	22	19.84	2	1.80	9	8.12
Fort Macleod	2990	64	21.40	16	5.35	47	15.72
Fort McMurray	73176	731	9.99	170	2.32	58	0.79
Fort Saskatchewan	14685	140	9.53	86	5.86	87	5.92
Fox Creek	2337	39	16.69	7	3.00	2	0.86
Gibbons	2730	35	12.82	12	4.40	25	9.16
Grande Cache	3828	33	8.62	17	4.44	16	4.18
Grande Prairie	44631	730	16.36	275	6.16	200	4.48
Grimshaw	2435	36	14.78	13	5.34	16	6.57
Hanna	2986	27	9.04	25	8.37	48	16.08
High Level	3849	102	26.50	16	4.16	5	1.30
High Prairie	2820	118	41.84	20	7.09	26	9.22
High River	9522	113	11.87	60	6.30	81	8.51
Hinton	9405	141	14.99	68	7.23	44	4.68
Innisfail	7208	78	10.82	38	5.27	107	14.84
Irricana	1104	15	13.59	3	2.72	6	5.43
Jasper	4511	44	9.75	272	60.30	15	3.33
Killam	1004	11	10.96	9	8.96	17	16.93
Lac La Biche	2776	100	36.02	37	13.33	51	18.37
Lacombe	10850	102	9.40	62	5.71	89	8.20
Lamont	1692	21	12.41	4	2.36	41	24.23

Table 32

Continued

Municipality	Population 2005	Birth by Residence of Mother	Rate/1000	Marriage by Place of Event	Rate/1000	Death by Residence of	
						Deceased	Rate/1000
Leduc	15630	190	12.16	101	6.46	118	7.55
Legal	1058	15	14.18	19	17.96	9	8.51
Lethbridge	77202	877	11.36	452	5.85	612	7.93
Lloydminster	15487	21	1.36	96	6.20	62	4.00
Magrath	1993	41	20.57	9	4.52	35	17.56
Manning	1293	30	23.20	13	10.05	22	17.01
Mayerthorpe	1570	37	23.57	15	9.55	59	37.58
Medicine Hat	56048	619	11.04	331	5.91	533	9.51
Millet	2125	24	11.29	11	5.18	24	11.29
Morinville	6540	114	17.43	25	3.82	36	5.50
Nanton	1841	23	12.49	18	9.78	26	14.12
Okotoks	11664	182	15.60	56	4.80	49	4.20
Olds	6703	77	11.49	55	8.21	90	13.43
Oyen	1101	17	15.44	3	2.72	24	21.80
Peace River	6240	100	16.03	39	6.25	40	6.41
Penhold	1750	37	21.14	9	5.14	10	5.71
Picture Butte	1701	55	32.33	20	11.76	19	11.17
Pincher Creek	3666	70	19.09	25	6.82	47	12.82
Ponoka	6330	73	11.53	46	7.27	97	15.32
Provost	2078	34	16.36	12	5.77	39	18.77
Rainbow Lake	1186	17	14.33	1	0.84	2	1.69
Raymond	3200	56	17.50	22	6.88	45	14.06
Red Deer	79082	969	12.25	402	5.08	479	6.06
Redcliff	4372	75	17.15	18	4.12	14	3.20
Redwater	2172	25	11.51	11	5.06	28	12.89
Redwood Meadows	1150	11	9.57	5	4.35	1	0.87
Rimbey	2160	25	11.57	14	6.48	50	23.15
Rocky Mountain House	6584	99	15.04	62	9.42	57	8.66
Sexsmith	1934	31	16.03	18	9.31	8	4.14
Sherwood Park	80232	836	10.42	308	3.84	297	3.70
Slave Lake	6600	132	20.00	27	4.09	26	3.94
Smoky Lake	1011	12	11.87	4	3.96	33	32.64
Spirit River	1100	14	12.73	11	10.00	26	23.64
Spruce Grove	18405	251	13.64	101	5.49	110	5.98
St. Albert	56310	573	10.18	217	3.85	231	4.10
St. Paul	5144	100	19.44	39	7.58	73	14.19
Stettler	5226	84	16.07	37	7.08	97	18.56
Stony Plain	10544	139	13.18	93	8.82	113	10.72
Strathmore	9653	119	12.33	36	3.73	72	7.46
Sundre	2267	35	15.44	24	10.59	46	20.29
Swan Hills	1807	27	14.94	2	1.11	4	2.21
Sylvan Lake	8504	148	17.40	77	9.05	30	3.53
Taber	7671	130	16.95	45	5.87	67	8.73
Three Hills	3554	34	9.57	17	4.78	31	8.72
Tofield	1818	22	12.10	15	8.25	46	25.30
Trochu	1033	14	13.55	17	16.46	18	17.42
Turner Valley	1786	20	11.20	7	3.92	13	7.28
Two Hills	1109	13	11.72	5	4.51	35	31.56
Valleyview	1856	78	42.03	16	8.62	15	8.08
Vauxhall	1112	25	22.48	8	7.19	11	9.89
Vegreville	5376	53	9.86	41	7.63	84	15.63
Vermilion	4435	34	7.67	33	7.44	66	14.88
Viking	1052	9	8.56	18	17.11	34	32.32
Vulcan	1762	23	13.05	12	6.81	34	19.30
Wainwright	5365	70	13.05	44	8.20	61	11.37
Wembley	1542	29	18.81	5	3.24	7	4.54
Westlock	4820	72	14.94	42	8.71	95	19.71
Wetaskiwin	11154	139	12.46	83	7.44	138	12.37
Whitecourt	8747	155	17.72	25	2.86	31	3.54