

Waskatenau

Population

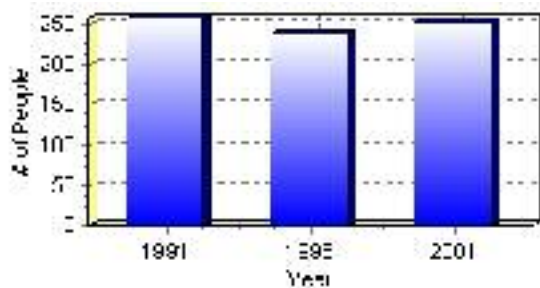
Total Population

Population 2004*	252
Population 2003*	252
Population 2002*	252
Population 2001**	255
Population 2000*	260
Population 1996**	237
Population 1991**	257
Population % change 1991-1996	-8.44%
Population % change 1996-2001	5.95%

* Source: Official Population List, Alberta Municipal Affairs

** Source: Statistics Canada 1991, 1996, & 2001 Census

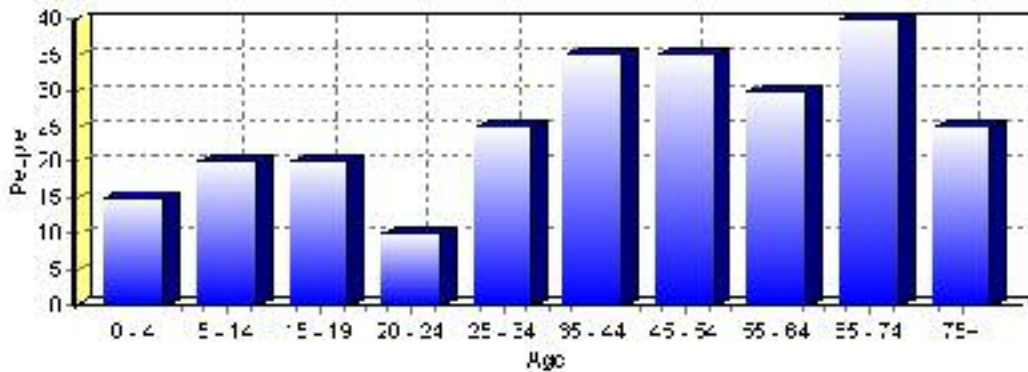
Total Population 1991-2001



Population by Age and Gender	1996 Male	1996 Female	1996 Total	2001 Male	2001 Female	2001 Total
Age 0 - 4	5	10	15	5	10	15
Age 5 - 14	15	20	35	10	10	20
Age 15 - 19	5	5	10	10	10	20
Age 20 - 24	5	5	10	0	10	10
Age 25 - 34	15	20	35	15	10	25
Age 35 - 44	20	10	30	15	20	35
Age 45 - 54	10	15	25	20	15	35
Age 55 - 64	10	15	25	10	20	30
Age 65 - 74	20	10	30	20	20	40
Age 75 and older	15	20	35	10	15	25
Total All Persons	115	115	230	120	135	255

Source: Statistics Canada 1996 & 2001 Census (numbers may not add up due to rounding)

Waskatenau Population by Age Group (2001)

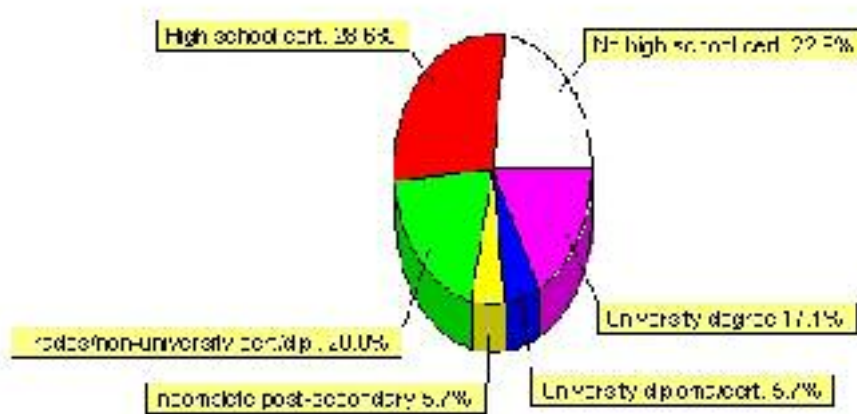


Education Statistics

Highest level of schooling for Population 20yrs and older	2001	%
People without high school certificates	40	22.86%
People with high school certificates	50	28.57%
People with trades or non-university certificate or diploma	35	20.00%
People with post-secondary education (not completed)	10	5.71%
People with university diploma/certificate	10	5.71%
People with university degree	30	17.14%
Total Population 20 years and older	175	100.00%

Source: Statistics Canada 2001 Census (numbers may not add up due to rounding)

Waskatenau Highest Level of Schooling 2001



Population with Post Secondary Qualifications	1996	%	2001	%
Agriculture and biological sciences	10	11.76%	10	13.33%
Commerce, management and business administration	0	0.00%	10	13.33%
Educational, recreational and counseling services	10	11.76%	15	20.00%
Engineering and applied science tech. and trades	30	35.29%	30	40.00%
Engineering and applied sciences	0	0.00%	0	0.00%
Fine and applied arts	10	11.76%	10	13.33%
Health professionals, science and technologies	10	11.76%	0	0.00%
Humanities and related fields	0	0.00%	10	13.33%
Mathematics and physical sciences	0	0.00%	0	0.00%
Social sciences and related fields	10	11.76%	0	0.00%
Other and/or no specialization	0	0.00%	0	0.00%
Total people with post secondary qualifications	85	100.00%	75	100.00%
Females with post-secondary qualifications	25	29.41%	35	46.67%
Males with post-secondary qualifications	60	70.59%	40	53.33%

Source: Statistics Canada 1996 & 2001 Census (numbers may not add up due to rounding)

Labour Force

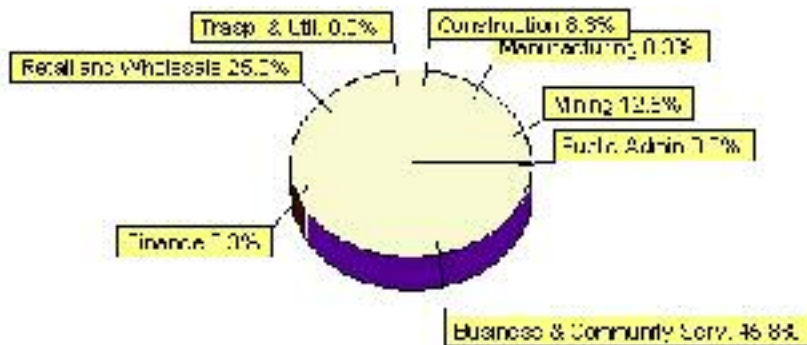
Labour force by activity	1996	2001
In the labour force, both sexes	110	115
Not in the labour force, both sexes	95	100
Total population 15 and over	205	215
Employed, both sexes	95	110
Unemployed, both sexes	10	0
Participation rate, both sexes	53.00%	54.00%
Unemployment rate, both sexes	9.00%	0.00%

Source: Statistics Canada 1996 & 2001 Census (numbers may not add up due to rounding)

Labour Force by Industry Division	1996	% of total	2001	% of total
Agriculture	10	9.52%	0	0.00%
Mining	0	0.00%	15	12.50%
Manufacturing	10	9.52%	10	8.33%
Construction	0	0.00%	10	8.33%
Transportation. & Utilities	20	19.05%	0	0.00%
Retail and Wholesale	30	28.57%	30	25.00%
Finance	0	0.00%	10	8.33%
Business & Community Services	30	28.57%	55	45.83%
Public Administration	10	9.52%	0	0.00%
Total All Industries	105	100.00%	120	100.00%

Source: Statistics Canada 1996 & 2001 Census (numbers may not add up due to rounding)

Waskatenau Labour Force By Industry - 2001



Labour Force by Major Occupational Groups	1996	%	2001	%
Management occupations	15	14.29%	10	8.70%
Business, Finances and administrative occupations	15	14.29%	0	0.00%
Natural and applied sciences and related occupations	0	0.00%	0	0.00%
Health occupations	10	9.52%	0	0.00%
Occupations in social science; education; government and religion	0	0.00%	0	0.00%
Occupations in art; culture; recreation and sport	0	0.00%	0	0.00%

Sales and service occupations	25	23.81%	60	52.17%
Trades; transport; equipment operators and related occupations	15	14.29%	15	13.04%
Occupations unique to primary industry	10	9.52%	10	8.70%
Occupations unique to processing; manufacturing and utilities	0	0.00%	15	13.04%
Occupations not elsewhere classified	0	0.00%	0	0.00%
Total - All Occupations (major groups)	105	100.00%	115	100.00%
Females - All Occupations	40	38.10%	45	39.13%
Males - All Occupations	65	61.90%	70	60.87%

Source: Statistics Canada 1996 & 2001 Census (numbers may not add up due to rounding)

Income

Family Income (Number of Families)	1996	%	2001	%
less than \$19,999	0	0.00%	10	18.18%
\$20,000 - \$39,999	0	0.00%	25	45.45%
\$40,000 - \$59,999	0	0.00%	15	27.27%
\$60,000 and over	0	0.00%	10	18.18%
Total number of families	0	0.00%	60	109.09%
Average family income	\$0		\$39,189	
Median family income	\$0		\$40,209	

Source: Statistics Canada 1996 & 2001 Census (numbers may not add up due to rounding)

Household Income (Number of Households)	1996	%	2001	%
less than \$19,999	0	0.00%	40	32.00%
\$20,000 - \$39,999	0	0.00%	35	28.00%
\$40,000 - \$59,999	0	0.00%	25	20.00%
\$60,000 and over	0	0.00%	30	24.00%
Total number of households	0	0.00%	125	100.00%
Average household income	\$0		\$31,832	
Median household income	\$0		\$24,173	

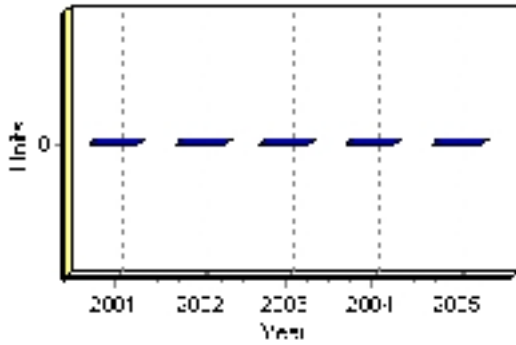
Source: Statistics Canada 1996 & 2001 Census (numbers may not add up due to rounding)

Building Permits

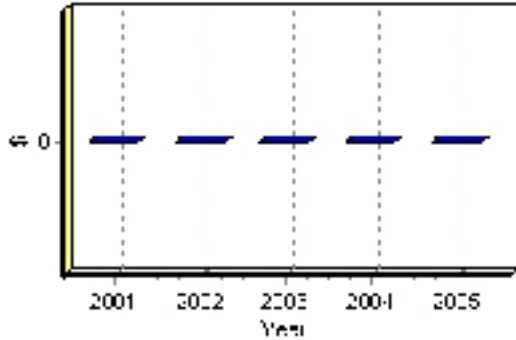
Total Building Permit Values	2001	2002	2003	2004	2005
Building Permits Value, Commercial	\$0	\$0	\$0	\$0	\$0
Building Permits Value, Industrial	\$0	\$0	\$0	\$0	\$0
Building Permits Value, Institutional	\$0	\$0	\$0	\$0	\$0
Building Permits Value, Residential	\$0	\$0	\$0	\$0	\$0
Building Permits Value, Total	\$0	\$0	\$0	\$0	\$0
Total Housing Starts	0	0	0	0	0

Source: Statistics Canada 2000-2004 Building Permits (numbers may not add up due to rounding)

Total Housing Starts



Value of Building Permits



Dwellings

Occupied Private Dwellings by Type	1996	% of total	2001	% of total
Apartments	15	12.50%	0	0.00%
Detached Duplexes	0	0.00%	0	0.00%
Movable Dwellings	0	0.00%	0	0.00%
Other single attached house	0	0.00%	0	0.00%
Row and semi-detached house	0	0.00%	15	12.00%
Single-detached house	105	87.50%	105	84.00%
Total number of occupied private dwellings	120	100.00%	125	100.00%
Private dwellings, owned	95	79.17%	115	92.00%
Private Dwellings, rented	25	20.83%	0	0.00%

Source: Statistics Canada 1996 & 2001 Census (numbers may not add up due to rounding)

Private Dwellings by Period of Construction	# of Dwellings	% of total
Period of construction, before 1946	25	20.00%
Period of construction, 1946 - 1960	40	32.00%
Period of construction, 1961 - 1970	20	16.00%
Period of construction, 1971 - 1980	10	8.00%
Period of construction, 1981 - 1990	30	24.00%
Period of construction, 1991 - 2001	0	0.00%
Total number of private dwellings constructed	125	100.00%

Source: Statistics Canada 2001 Census (numbers may not add up due to rounding)

Disclaimer: Information in this profile has been provided from a variety of external sources. Although every effort has been made to ensure the accuracy, currency and reliability of the content and data, AlbertaFirst.com Ltd. accepts no responsibility in this regard.

© AlbertaFirst.com Ltd., 2006.