

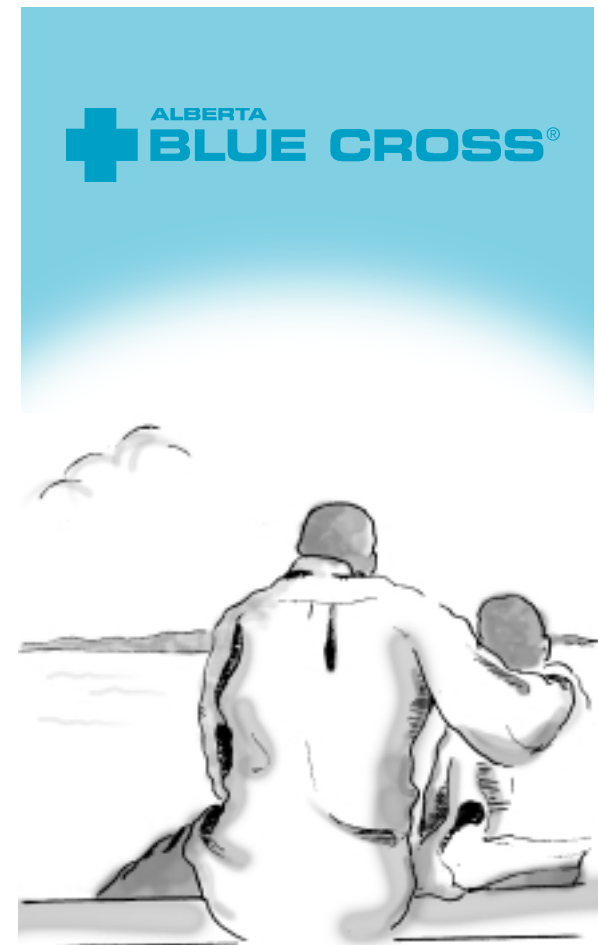
## WHAT IS NOT COVERED?

- Infusion equipment and supplies.
- Medications for palliative patients who reside in publicly-funded facilities (for example, acute care hospitals, long term care facilities and psychiatric hospitals).
- Drug benefit expenses exceeding a total of \$25,000 per participant per benefit year (July 1 to June 30).
- Drug benefit expenses incurred prior to the effective date of coverage.
- Drug benefit expenses submitted more than 12 months after the service was incurred.
- Charges for drugs and injectables supplied directly and charged for by a physician, excluding allergy serums.
- Diabetic supplies (not including insulin).
- Ambulance services. Coverage may be available through other Alberta government-sponsored programs administered by Alberta Blue Cross. For more information please refer to program brochures which are available at Alberta Health and Wellness or Alberta Blue Cross offices, or any Alberta pharmacy.

## WHO HAS MORE INFORMATION ABOUT THIS PROGRAM?

Additional information about the *Alberta Palliative Drug Care Coverage* can be obtained from:

- **Alberta Health and Wellness**  
**(780) 427-1432 (Edmonton)**  
**310-0000 (Toll-free for the rest of Alberta), then dial (780) 427-1432**  
**fax: (780) 422-0102**  
**website: [www.health.gov.ab.ca](http://www.health.gov.ab.ca)**
- **Your physician**
- **The Palliative Care Program of your Regional Health Authority**
- **The home care office at your Regional Health Authority**
- **Cross Cancer Institute, Edmonton, Alberta**  
**(780) 432-8771**
- **Tom Baker Centre, Calgary, Alberta**  
**(403) 670-1711**



# Palliative Care Drug Coverage

REVISED JUNE 2001

## ALBERTA PALLIATIVE CARE DRUG COVERAGE

Alberta Health and Wellness sponsors *Palliative Care Drug Coverage*, which is offered through Alberta Blue Cross to any Albertan who has been diagnosed as being palliative\* and whose physician has applied on their behalf.

## WHAT IS ALBERTA PALLIATIVE CARE DRUG COVERAGE?

The *Palliative Care Drug Coverage* program provides premium-free coverage for needed medications for patients who have been diagnosed as being palliative and are treated at home. By subsidizing the cost of care in the home, a major financial burden is removed for the patient and their family.

## WHAT DOES THE PROGRAM COVER?

The *Palliative Care Drug Coverage* program provides premium-free Alberta Blue Cross coverage with no waiting period. The program subsidizes the cost for eligible prescription medications, specific laxatives and solutions for hydration therapy.

All eligible medications are listed in the *Alberta Health and Wellness Drug Benefit List* and *Palliative Care Drug Benefit Supplement*.

The patient is responsible for 30 per cent of the cost of the drugs to a maximum cost of \$25 per prescription. The maximum amount the patient pays out of pocket is \$1,000.

## WHO IS ELIGIBLE?

The program is open to residents of Alberta who are eligible to receive benefits from the Alberta Health Care Insurance Plan and who have been diagnosed as being palliative.

The program excludes those individuals whose residence (such as acute care hospitals, long-term care facilities and psychiatric hospitals), provides publicly funded drugs.

## ENROLLMENT IN THE PROGRAM

After a person has been diagnosed as being palliative by a physician, an application form must be completed and signed by both the patient (or guardian) and physician. The completed application form must then be mailed to Alberta Health and Wellness at PO Box 1360 Stn Main, Edmonton, Alberta T5J 2N3, attention Alberta Palliative Care Drug Program, or faxed to (780) 422-0102.

Application forms are available through Alberta Health and Wellness, Alberta Blue Cross, your physician, the palliative care program or home care office of your Regional Health Authority and the Alberta Cancer Board. Application forms are also available on the Alberta Health and Wellness website at [www.health.gov.ab.ca](http://www.health.gov.ab.ca).

The patient or guardian will receive written notification regarding acceptance into the program from Alberta Health and Wellness.

## HOW DO I RECEIVE MY PRESCRIPTIONS AND SUPPLIES?

After the patient has been enrolled in the program, the required medications can be obtained at their local pharmacy. After showing their Alberta Blue Cross identification card, the pharmacist will charge a 30 per cent co-payment to a maximum of \$25 per prescription. There is a maximum co-pay ceiling of \$1,000 per participant, after which the program covers 100 per cent of the cost for eligible products.

## HOW LONG WILL COVERAGE CONTINUE?

As soon as the application is processed by Alberta Health and Wellness the patient is eligible for coverage. They will continue to be eligible as long as they are diagnosed as being palliative.

---

### \*DEFINITION OF PALLIATIVE

*Palliative refers to patients who have been diagnosed by a physician as being in the end stage of a terminal illness or disease, are aware of their diagnosis and have made a voluntary informed decision related to resuscitation, and for whom the focus of care is palliation and not treatment aimed at a cure.*