

Thorsby

Welcome

Welcome to our community. We hope the information contained within this profile is useful. If additional information is required, please contact our representative from the "Key Contacts" section.

Area Overview

The Village of Thorsby is a community of approximately 799 residents in 2001. The village is surrounded by a large farming community and supplies the growing needs for goods and services to the immediate population.

The village's logo, "Best of Both Worlds," is very appropriate and describes the attributes of the village fairly accurately. It truly describes the pleasure of "country living" in a small rural community while still being close to the large centres to accommodate services not available within the village.

Being close to larger centres keeps the cost of living very competitive, which may be the main reason that business thrives in Thorsby.

Community Services

Municipal

Village of Thorsby
Box 297
Thorsby, Alberta
T0C 2P0
Tel: 780-789-3935
Fax: 780-789-3779

The Village Office
Public Works
Municipal Library

Provincial

N/A

Federal

Canada Post Office
Royal Canadian Mounted Police

Community Lifestyle

Recreation

The Village of Thorsby owns and operates a \$3.5 million recreation complex, which houses a regulation size ice arena and viewing

area, four bowling lanes, racquet ball court, weight room, library, playschool and large concession area. Other amenities include big screen t.v. with satellite and weight room with sauna. Internet Services are located in the library. 1 meeting room is available to the public for a small fee. The indoor ramp park is one of only a few in Alberta and was built in January 2001. The ramp park is open for use to BMX's, Inline skateboards. The recreation centre also offers two baseball diamonds, 1 tennis court and a playground

The Haymaker Centre, owned and operated by the Thorsby Agricultural Society, is one of the finest centres in Alberta. Numerous activities take place there during the year. The facility features rodeos, roping competitions, livestock shows, agricultural shows as well as numerous other activities. 1 craft room.

Thorsby features a large campground with hook-up for RV vehicles. A large camp kitchen was installed in 1994. The campground is situated in the south bank of Weed Creek and is completely surrounded by trees.

Family and Community Support Service [FCSS] are looked after by the FACE Board with a coordinator in charge of the programs. The FACE Coordinator's office is situated in the Thorsby Village Office.

Community Organizations

Chamber of Commerce (Thorsby Chamber of Commerce)

Religious Facilities

- Lutheran Church
- United Church
- Roman Catholic Church
- Greek Orthodox Church
- Greek Catholic Church
- Pentecostal Church.

Special Annual Events/Attractions

Annual events include the Town's rodeo and roping competition. The September long week-end sports the Demo Derby. Farmers Day in May brings out the good humour in everyone. Thorsby hosts a Rodeo and parade-May long weekend, and also hosts Customer Appreciation in December.

Hospitality

Accommodation

Thorsby Hotel

Restaurants

Thorsby has 3 local restaurants and a bakery.

Economic Base

Agriculture plays a major role in the local economy. In addition, oil & gas exploration in the surrounding area has contributed to the economy.

Economic Facts

Thorsby has two large farm implement dealerships. Services, repairs and resale as well as new sales contribute to the economy.

Thorsby's business sector covers the following: Home Hardware Store, two garages, 1 gasoline sales outlets, 2 major grocery

stores, 3 restaurants, a hotel, 1 insurance agencies, a clothing store, 2 hair salons, a bottle depot, a real estate service, auto and equipment parts store and a bakery.

Major Businesses Products/Services

- Large Hot Tub Manufacturing Shop, employeeding approx. 125 employees
- Welding Fabrication Shop, employeeding approx. 80 people

Financial Institutions

- Alberta Treasury Branch
- Bank of Montreal

Emergency Services

Fire Protection

Thorsby is served by a local volunteer fire department that has 25 members, 11 reservists and 4 trucks [Tel: 780-789-3611]. The Department is operated jointly with the Thorsby Rural Fire Protection Association.

Police Services

Thorsby is served by a local detachment of the Royal Canadian Mounted Police [RCMP] [Tel: 780-789-3950]or 911. A crime watch program is being set up for the Village.

STARS (Air) and ground Ambulance Services

Ambulance service is provided from Leduc [Tel: 780-986-2885]or 911. STARS

Health Care

Thorsby residents are served by several area hospitals such as Breton Hospital, Devon Hospital, Leduc Hospital, as well as Edmonton-based hospitals.

Nursing home facilities are available in Warburg. Also, the Leduc-Strathcona Health Unit have a clinic and office in Thorsby.

A Chiropractor's office is located in Thorsby.

Key Contacts for Business Development

Municipal

Village of Thorsby
Box 297
Thorsby, Alberta
T0C 2P0
Tel: 780-789-3935
Fax: 780-789-3779

Rick Hart
Mayor

James Squire
Chief Administrative Officer
jsquire@village.thorsby.ab.ca

Provincial (Updated December 2004)

David Pattison
Director, Edmonton Region
Regional Development Branch
Alberta Economic Development
5th Floor, Commerce Place
10155 - 102 Street
Edmonton, AB T5J 4L6
Tel: 780-427-6648
Fax: 780-422-5804
E-Mail: david.pattison@gov.ab.ca
(updated May 10, 2004)
Jan Couper, Client Services Representative
Tel: 780-427-6291
E-Mail: jan.couper@gov.ab.ca

Tony Abbott
Member of the Legislative Assembly [MLA]
Drayton Valley-Calmar Constituency
#503 Legislature Building
10800 - 97 Avenue
Edmonton, Alberta
T5K 2B6
Tel: 780-415-9466
Fax: 780-422-0351

Constituency Office:
Box 7272
Drayton Valley AB
T7A 1S5
Tel: 780-542-3355
Toll Free: 1-800-542-7307
Fax: 780-542-3331

Federal (Updated June 2001)

Blaine Calkins
Member of Parliament [MP]
Wetaskiwin Constituency
House of Commons
Ottawa, Ontario
K1A 0A6

Location

The Village of Thorsby is located on a major transportation route. Highway 39 connects the village to the City of Leduc to the east, followed by Highway 2 north to the City of Edmonton and south to the Cities of Wetaskiwin and Calgary.

Thirty minutes of excellent highway driving brings you to the City of Leduc. The City of Edmonton can be reached in 45 minutes by way of two alternative routes: South Edmonton by way of the City of Leduc or North-West Edmonton by way of the Town of Devon.

Post Secondary Education

Thorsby is within easy commuting distance to Edmonton-based post-secondary institutions such as the University of Alberta, Alberta College, Grant MacEwan Community College, and the Northern Alberta Institute of Technology [NAIT]. Also, Athabasca University offers courses by correspondence.

Taxation

	<u>Residential/Farmland</u>	<u>Non-Residential</u>
2005		
Municipal Tax Rate	15.2450	20.2450
Education - Alberta School Foundation Fund Tax Rate	3.3340	6.0230
Seniors Lodge Accommodation Tax Rate	.0590	.0590

Mill Rates (2001)

Residential-Public 23.146
Residential-Separate N/A
Non-Residential - Public 30.623
Non-Residential - Separate N/A

Transportation

Air Service

Thorsby is located 35 minutes southwest of Edmonton International Airport.

Rail Service

Canadian Pacific Railways does not have passenger service to Thorsby, but the line runs through town and commercial stops are made.

Highways

Thorsby is located 1/4 mile south off Highway 39. Highway 39 services the communities west of the City of Leduc [located on Highway 2 North to Edmonton and South to Calgary].

Trucking Firms

Thorsby has one major trucking firm with same-day service being supplied.

Bus Services

There is daily bus service to Leduc and Edmonton.

Couriers and Taxis

Loomis and Purolator Couriers, Rocket Express

Utilities

Electrical Power

Epcor Energy
1-800-667-2345

Natural Gas

ATCO Gas
(780) 310-5678

Telephone

TELUS
(780) 310-2255

Water Supply

The source of water is the North Saskatchewan River, by way of a water line owned by Imperial Oil. Thorsby owns and operates its own water treatment plant. The operations are monitored on a regular basis by the Department of Environment. Water usage rates are \$30.00 for 12m³ (for a 2 month period), with an extra charge of \$1.30 per m³ over the 12m³ used.

Waste Management

Thorsby owns and operates its own lagoon, which is located 3 km east of the Village. The usage rate is \$26.00 for a period of 2 months.

Solid waste disposal is \$18 for a period of 2 months.

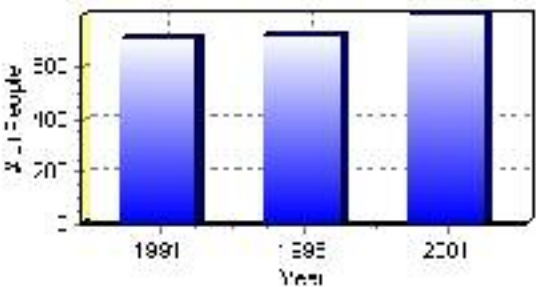
Population

Total Population

Population 2004*	799
Population 2003*	799
Population 2002*	799
Population 2001**	800
Population 2000*	725
Population 1996**	725
Population 1991**	708
Population % change 1991-1996	2.34%
Population % change 1996-2001	9.26%

* Source: Official Population List, Alberta Municipal Affairs
** Source: Statistics Canada 1991, 1996, & 2001 Census

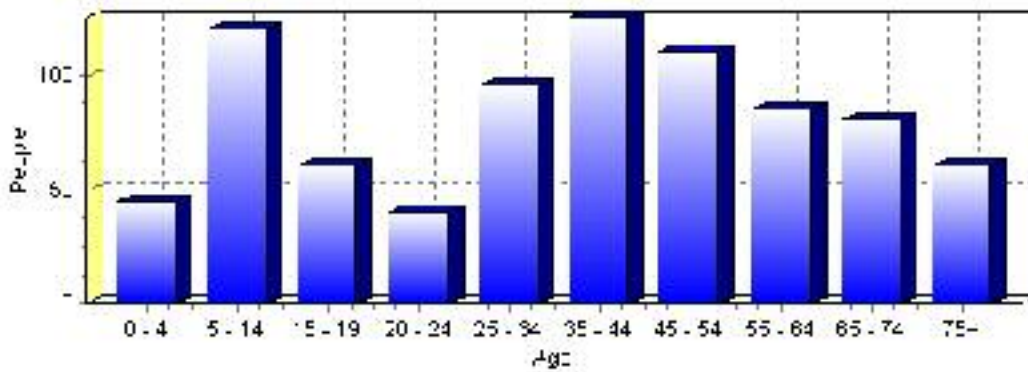
Total Population 1991-2001



Population by Age and Gender	1996 Male	1996 Female	1996 Total	2001 Male	2001 Female	2001 Total
Age 0 - 4	25	25	50	25	20	45
Age 5 - 14	50	45	95	70	50	120
Age 15 - 19	20	20	40	30	30	60
Age 20 - 24	20	15	35	20	20	40
Age 25 - 34	50	45	95	50	45	95
Age 35 - 44	50	40	90	70	55	125
Age 45 - 54	50	40	90	60	50	110
Age 55 - 64	30	35	65	35	50	85
Age 65 - 74	40	45	85	45	35	80
Age 75 and older	25	30	55	25	35	60
Total All Persons	370	360	730	420	385	805

Source: Statistics Canada 1996 & 2001 Census (numbers may not add up due to rounding)

Thorsby Population by Age Group (2001)

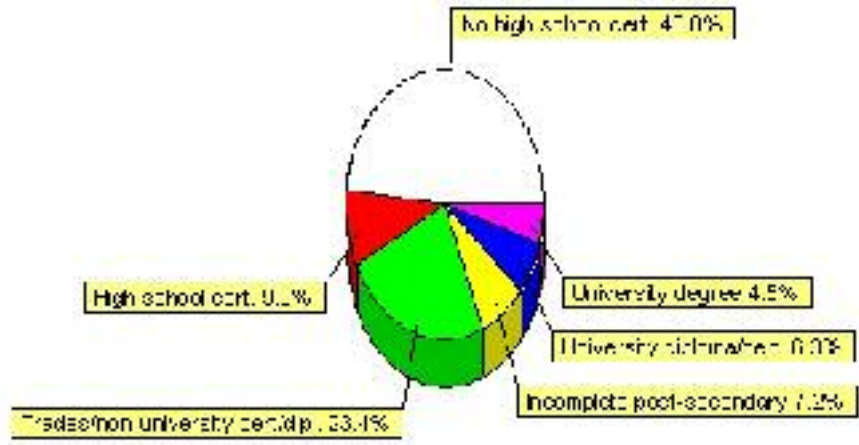


Education Statistics

Highest level of schooling for Population 20yrs and older	2001	%
People without high school certificates	260	46.85%
People with high school certificates	50	9.01%
People with trades or non-university certificate or diploma	130	23.42%
People with post-secondary education (not completed)	40	7.21%
People with university diploma/certificate	35	6.31%
People with university degree	25	4.50%
Total Population 20 years and older	555	100.00%

Source: Statistics Canada 2001 Census (numbers may not add up due to rounding)

Thorsby Highest Level of Schooling 2001



Population with Post Secondary Qualifications	1996	%	2001	%
Agriculture and biological sciences	0	0.00%	20	10.26%
Commerce, management and business administration	35	23.33%	0	0.00%
Educational, recreational and counseling services	30	20.00%	60	30.77%
Engineering and applied science tech. and trades	50	33.33%	90	46.15%
Engineering and applied sciences	0	0.00%	10	5.13%
Fine and applied arts	15	10.00%	10	5.13%
Health professionals, science and technologies	15	10.00%	20	10.26%
Humanities and related fields	0	0.00%	0	0.00%
Mathematics and physical sciences	0	0.00%	0	0.00%
Social sciences and related fields	0	0.00%	0	0.00%
Other and/or no specialization	0	0.00%	0	0.00%
Total people with post secondary qualifications	150	100.00%	195	100.00%
Females with post-secondary qualifications	75	50.00%	70	35.90%
Males with post-secondary qualifications	75	50.00%	125	64.10%

Source: Statistics Canada 1996 & 2001 Census (numbers may not add up due to rounding)

Labour Force

Labour force by activity	1996	2001
In the labour force, both sexes	295	385
Not in the labour force, both sexes	265	240
Total population 15 and over	565	625
Employed, both sexes	280	365
Unemployed, both sexes	20	20
Participation rate, both sexes	52.00%	62.00%
Unemployment rate, both sexes	6.00%	5.00%

Source: Statistics Canada 1996 & 2001 Census (numbers may not add up due to rounding)

Labour Force by Industry Division	1996	% of total	2001	% of total
Agriculture	0	0.00%	10	2.60%
Mining	25	8.62%	35	9.09%
Manufacturing	10	3.45%	40	10.39%
Construction	40	13.79%	45	11.69%
Transportation. & Utilities	20	6.90%	45	11.69%
Retail and Wholesale	70	24.14%	40	10.39%
Finance	15	5.17%	25	6.49%
Business & Community Services	90	31.03%	120	31.17%
Public Administration	10	3.45%	25	6.49%
Total All Industries	290	100.00%	385	100.00%

Source: Statistics Canada 1996 & 2001 Census (numbers may not add up due to rounding)

Thorsby Labour Force By Industry - 2001



Labour Force by Major Occupational Groups	1996	%	2001	%
Management occupations	20	6.90%	15	3.95%
Business, Finances and administrative occupations	55	18.97%	45	11.84%
Natural and applied sciences and related occupations	10	3.45%	10	2.63%
Health occupations	10	3.45%	15	3.95%
Occupations in social science; education; government and religion	15	5.17%	10	2.63%
Occupations in art; culture; recreation and sport	10	3.45%	0	0.00%

Sales and service occupations	95	32.76%	120	31.58%
Trades; transport; equipment operators and related occupations	70	24.14%	115	30.26%
Occupations unique to primary industry	15	5.17%	45	11.84%
Occupations unique to processing; manufacturing and utilities	0	0.00%	10	2.63%
Occupations not elsewhere classified	0	0.00%	0	0.00%
Total - All Occupations (major groups)	290	100.00%	380	100.00%
Females - All Occupations	125	43.10%	145	38.16%
Males - All Occupations	165	56.90%	240	63.16%

Source: Statistics Canada 1996 & 2001 Census (numbers may not add up due to rounding)

Income

Family Income (Number of Families)	1996	%	2001	%
less than \$19,999	20	12.12%	25	14.29%
\$20,000 - \$39,999	65	39.39%	90	51.43%
\$40,000 - \$59,999	45	27.27%	40	22.86%
\$60,000 and over	35	21.21%	35	20.00%
Total number of families	165	100.00%	190	108.57%
Average family income	\$41,751		\$50,419	
Median family income	\$40,224		\$41,401	

Source: Statistics Canada 1996 & 2001 Census (numbers may not add up due to rounding)

Household Income (Number of Households)	1996	%	2001	%
less than \$19,999	125	40.32%	70	21.21%
\$20,000 - \$39,999	90	29.03%	140	42.42%
\$40,000 - \$59,999	55	17.74%	40	12.12%
\$60,000 and over	0	0.00%	90	27.27%
Total number of households	310	100.00%	330	100.00%
Average household income	\$32,067		\$41,877	
Median household income	\$23,317		\$33,637	

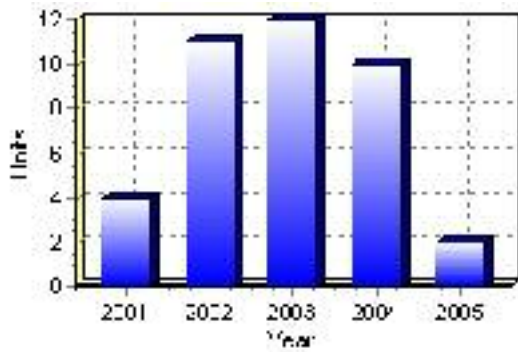
Source: Statistics Canada 1996 & 2001 Census (numbers may not add up due to rounding)

Building Permits

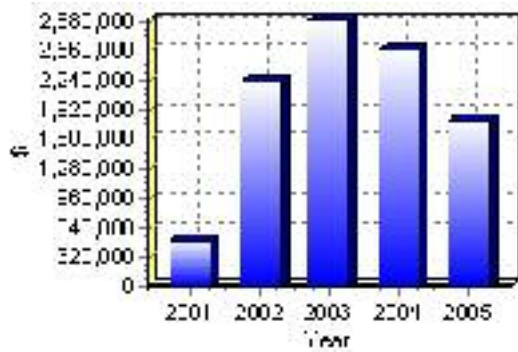
Total Building Permit Values	2001	2002	2003	2004	2005
Building Permits Value, Commercial	\$15,000	\$212,000	\$762,000	\$366,000	\$1,403,000
Building Permits Value, Industrial	\$0	\$900,000	\$730,000	\$0	\$0
Building Permits Value, Institutional	\$25,000	\$0	\$0	\$761,000	\$0
Building Permits Value, Residential	\$469,000	\$1,104,000	\$1,401,000	\$1,445,000	\$394,000
Building Permits Value, Total	\$509,000	\$2,216,000	\$2,893,000	\$2,572,000	\$1,797,000
Total Housing Starts	4	11	12	10	2

Source: Statistics Canada 2000-2004 Building Permits (numbers may not add up due to rounding)

Total Housing Starts



Value of Building Permits



Dwellings

Occupied Private Dwellings by Type	1996	% of total	2001	% of total
Apartments	25	8.06%	20	5.97%
Detached Duplexes	0	0.00%	0	0.00%
Movable Dwellings	10	3.23%	35	10.45%
Other single attached house	10	3.23%	5	1.49%
Row and semi-detached house	10	3.23%	5	1.49%
Single-detached house	265	85.48%	265	79.10%
Total number of occupied private dwellings	310	100.00%	335	100.00%
Private dwellings, owned	215	69.35%	245	73.13%
Private Dwellings, rented	100	32.26%	85	25.37%

Source: Statistics Canada 1996 & 2001 Census (numbers may not add up due to rounding)

Private Dwellings by Period of Construction	# of Dwellings	% of total
Period of construction, before 1946	15	4.55%
Period of construction, 1946 - 1960	120	36.36%
Period of construction, 1961 - 1970	65	19.70%
Period of construction, 1971 - 1980	65	19.70%
Period of construction, 1981 - 1990	50	15.15%
Period of construction, 1991 - 2001	15	4.55%
Total number of private dwellings constructed	330	100.00%

Source: Statistics Canada 2001 Census (numbers may not add up due to rounding)

Disclaimer: Information in this profile has been provided from a variety of external sources. Although every effort has been made to ensure the accuracy, currency and reliability of the content and data, AlbertaFirst.com Ltd. accepts no responsibility in this regard.

© AlbertaFirst.com Ltd., 2006.