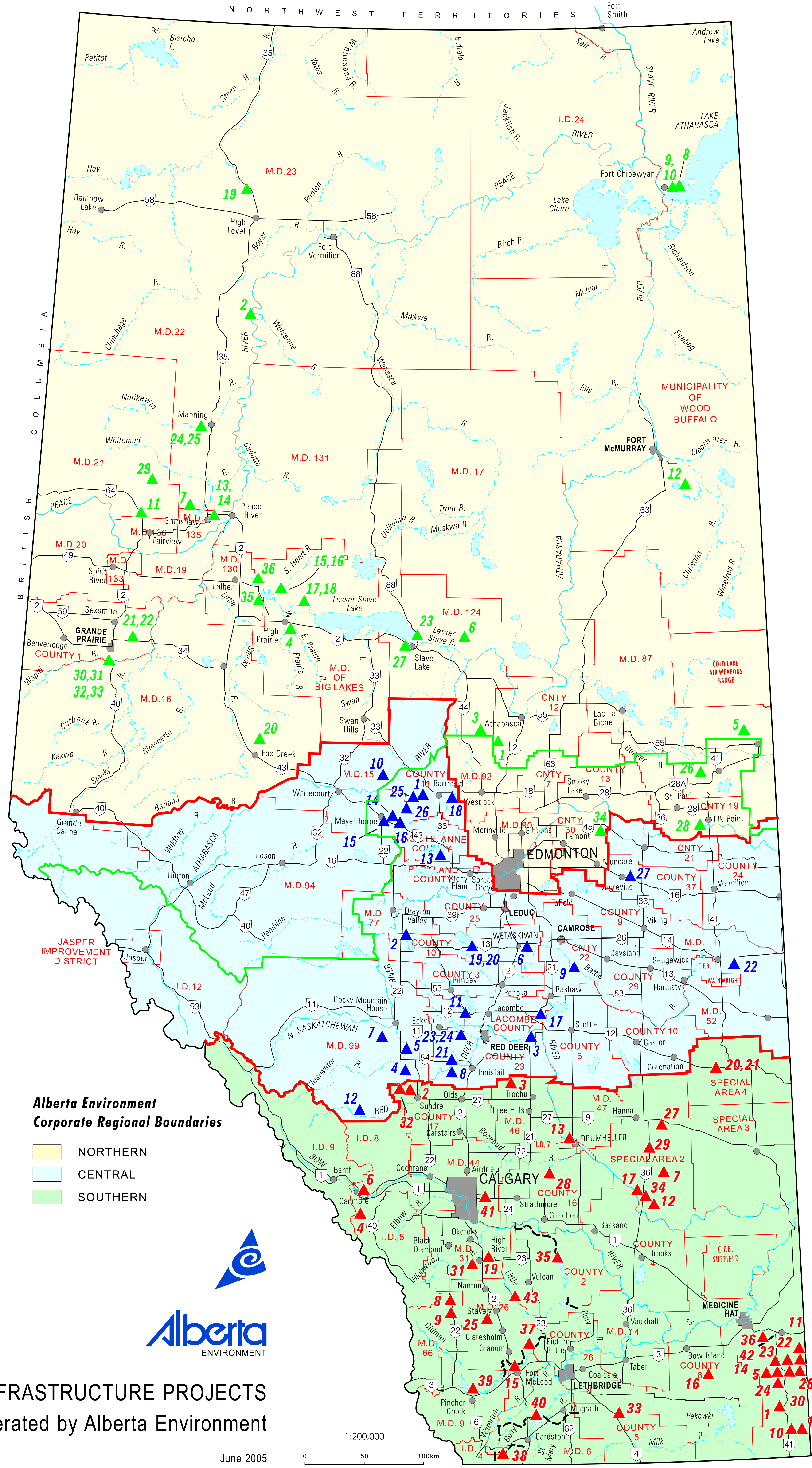


NORTHERN REGION		
LOCATION NUMBER	PROJECT NAME	TYPE OF STRUCTURE
1	Bolloque Lake	Dam
2	Carcajou Flood Control	Ditch
3	Cross Lake (Steel Lake)	Weir
4	East / West Prairie River - All Phases	Channel Improvement
5	Ethel Lake	Weir
6	Fawcett Lake	Weir
7	Figure Eight Lake	Dam
8	Fort Chipewyan - Pier, Breakwater	Marina
9	Fort Chipewyan - Riviere des Rochers Weir	Weir
10	Fort Chipewyan - Tramway	Portage
11	George Lake	Weir
12	Gregoire Lake	Weir
13	Grimshaw Flood Control - I & II	Ditch
14	Grimshaw Flood Control - III	Ditch
15	Heart River - Dam 1	Dam
16	Heart River - Dam 2	Dam
17	Horse Lakes Flood Control - I, II, III	Channel Improvement
18	Horse Lakes Flood Control - IV, V, VI	Channel Improvement
19	Hutch Lake Dam	Dam
20	Iosegun Lake	Weir
21	Kleskun Hills Drainage - I	Ditch
22	Kleskun Hills Drainage - II	Ditch
23	Lesser Slave Lake Regulation	Channel Improvement, Weir
24	Manning-Notikewin River Protection - I	Erosion Protection
25	Manning-Notikewin River Protection - II	Erosion Protection
26	Moose Lake	Weir
27	Slave Lake (Town) Fl. Control- Trashrack	Channel Improvement
28	St. Paul Pumphouse / Pipeline	Pumphouse
29	Stoney Lake Dam	Dam
30	Wapiti River Erosion Control (Ski Hill) - I	Erosion Protection
31	Wapiti River Erosion Control (Ski Hill) - II	Erosion Protection
32	Wapiti River Slope Protection - I	Erosion Protection
33	Wapiti River Slope Protection - II	Erosion Protection
34	Whitford/Rush Lakes	Channel Improvement
35	Winagami Lake South Outlet	Spillway
36	Winagami-Girouxville-McLennan Canal	Canal

- ▲ Project Location
- 9 Regional Project Location Number

CENTRAL REGION		
LOCATION NUMBER	PROJECT NAME	TYPE OF STRUCTURE
1	Barrhead Water Supply	Weir
2	Buck Lake	Weir
3	Buffalo Lake Pumphouse / Pipeline	Pumphouse
4	Burnstick Lake	Weir
5	Clearwater River	Dykes
6	Coal Lake	Dam
7	Cow Lake Stabilization	Weir
8	Dickson Dam	Dam
9	Driedmeat Lake	Weir
10	Goose Lake	Weir
11	Gull Lake Pumphouse / Pipeline	Pumphouse
12	Klein Lake	Dam
13	Lac Ste. Anne	Weir
14	Little Paddle Dykes	Dykes
15	Paddle River Dam	Dam
16	Paddle River Dykes	Dykes
17	Parlby Cr. / Spotted L. / Alix L. Structure	Multiple
18	Pembina River Dykes	Dykes
19	Pigeon Lake - Creek	Ditch
20	Pigeon Lake - Weir	Weir
21	Red Deer River Erosion	Groynes
22	Ribstone Lake	Dam
23	Sylvan Lake Creek	Channel Improvement
24	Sylvan Lake Retaining Wall	Erosion Protection
25	Thunder Lake	Weir
26	Twin Lakes	3Backflood
27	Vermilion River - All Phases including Dam	Channel Improvement, Dam

- ▲ Project Location
- 9 Regional Project Location Number



SOUTHERN REGION		
LOCATION NUMBER	PROJECT NAME	TYPE OF STRUCTURE
1	Bare Creek Reservoir	Dam
2	Bearberry Creek	Channel Improvement
3	Bigelow Reservoir	Dam
4	Buller Lake Stabilization	Weir
5	Bullshead Reservoir	Dam
6	Canmore Flood Control Phase I, II, III	Dykes
7	Carolside Dam	Dam
8	Chain Lakes North	Dam
9	Chain Lakes South	Dam
10	Cressday Reservoir	Dam
11	Cypress View Reservoir	Dam
12	Deadfish Creek Dam / Canal / Pumphouse / pipeline	Multiple
13	Drumheller Dykes All Phases	Dykes
14	Elkwater Lake (Reservoir)	Dam
15	Fort McLeod Dykes	Dykes
16	Granlea Reservoir	Dam
17	Janet Dam	Dam
18	Jaydot Reservoir	Dam
19	Little Bow Canal	Multiple
20	Loyalist Reservoir	Dam
21	Loyalist Spillway Replacement	Spillway
22	Mackay Reservoir	Dam
23	Mcalpine Reservoir	Dam
24	Michele Reservoir	Dam
25	Pine Coulee Reservoir & Dam	Multiple
26	Reesor Lake	Dam
27	Richdale Dam	Dam
28	Severn Reservoir	Dam
29	Sheerness Water Supply	Canal(concrete)
30	Spruce Coulee Reservoir	Dam
31	Squaw Coulee Reservoir / Canal	Dam/canal
32	Sundre Dykes	Dyke
33	Tyrrell Rush Lakes	Multiple
34	Woodrow Reservoir	Dam
35	Carseland Bow River Headworks System	Multiple
	Carseland Weir	Weir & Dykes
	Main Canal & Structures	Canal
	West Arrowwood Syphon	Syphon
	East Arrowwood Syphon	Syphon
	Lake McGregor Reservoir & Dams	Dam
	Travers Reservoir & Dam	Dam
	Little Bow Reservoir & Dam	Dam
36	Cavan Lake Headworks System	Multiple
	Diversion at Gros Ventre Creek	Weir & Dykes
	Main Canal & Structures	Canal
	Cavan Lake Reservoir & Dam	Dam
	Diversion at Ross Creek	Weir & Dykes
37	Lethbridge Northern Headworks System	Multiple
	Diversion at Oldman River	Weir & Dykes
	Main Canal & Structures	Canal
	Oldman River Flume	Flume
	Willow Creek Flume	Flume
	Keho Reservoir	Dykes
38	Mountain View - Aetna Headworks System	Multiple
	Diversion at Belly River	Weir & Dykes
	Main Canal & Structures	Canal
	Payne Lake Reservoir & Dams	Dam
	Lee Creek Syphon	Syphon
	Newton Coulee Syphon	Syphon
39	Oldman River Dam & Reservoir	Dam
	Dam & Related Works	Dam
	Reservoir & Related Works	Multiple
40	Waterton St Mary Headworks System	Multiple
	Waterton Reservoir & Dam	Dam
	Main Canal & Structures	Canal
	Belly River Chute	Spillway
	Diversion at Belly River	Weir & Dykes
	Bullhorn Coulee Dam	Dam
	St Mary Reservoir & Dam	Dam
	Pinepound Syphon	Syphon
	Jensen Reservoir & Dam	Dam
	Taylor's Coulee Chute	Spillway
	Ridge Reservoir & Dams	Dam
41	Western Headworks System	Multiple
	Diversion at Bow River	Weir & Dykes
	Main Canal & Structures	Canal
42	Ambose Reservoir	Reservoir
43	(New) Little Bow River Dam and Reservoir	Multiple

- ▲ Project Location
- 9 Regional Project Location Number

MAJOR WATER MANAGEMENT INFRASTRUCTURE PROJECTS

Owned and Operated by Alberta Environment

June 2005