

# Bowden

[www.town.bowden.ab.ca](http://www.town.bowden.ab.ca)

## Welcome

Welcome to the Town of Bowden Albertafirst.com community profile! The Town of Bowden offers a wonderful array of reasons to consider locating either yourself and/or you business here!

## Climate

Alberta has a continental climate with warm summers and cold winters. The average date of first fall frost has traditionally been September 8. The average date of last spring frost is May 23, with an average frost-free period of 108 days. Hours of daylight range from a low of 7 ½ hours in Winter Solstice to almost 17 hours in Summer.

Temperature ranges in summer (June to August) from 15° C to 23° C (60° F to 73° F). Temperature ranges in winter (November to February) from -8° C to -25° C (18° F to -13° F). Our warmest month is July with an average high of 23.2°C; coldest, January with an average high of -3.6°C. We get about 1900 hours of sunshine annually. Bowden experiences between 130 and 135 cm of snowfall each year.

**SOURCE:** Environment Canada, Stats Canada

## Community Services

### RECREATION FACILITIES

Bowden has a wide range of recreation facilities available including the Igloo Ice Arena, two baseball diamonds, and several soccer fields. Amenities that both visitors and residents will enjoy include the Bowden Pioneer Museum, Community Hall and campground. Located throughout town there are several parks and playgrounds with modern playground equipment.

The Bowden Hi-Way Golf Course is a very popular 9 hole golf course with area residents and travelers along Highway 2. Right in Bowden this course offers many challenges for all golfers yet, the average round can still be completed in less than two hours. The course also caters to the young golfer with a junior golf program for ages five and up.

The Town of Bowden offers a bus-in program to the Innisfail Aquatic Centre's Red Cross/Lifesaving Swim program each August. For more information, contact Town Office.

### COMMUNITY SERVICES

Bowden has all the social amenities you can imagine, with service clubs and volunteer organizations providing entertainment, events and activities in the community. Please feel free to contact any of the following organizations for more information.

Alcoholics Anonymous 556-9415  
Bereavement Facilitator 224-3928  
Bowden Art Club 224-2263  
Bowden Ag Society 224-2154

Bowden Historical Society 224-2393  
Bowden Lions Club 224-2857  
Bowden Friendship Club 224-2114  
Bowden Light Horse 224-3450  
Bowden Municipal Library Board 224-3688  
Bowden Team Roping 224-3784  
Bow-Glen Court 224-2691 |  
Citizens on Patrol 224-2354  
Frozen Meals for Seniors 224-7569  
Antler Hill Silver Stirrups 4-H 227-2880  
Bowden Figure Skating 224-2340  
Bowden Minor Hockey 224-2750  
Bowden Soccer 224-2011  
Bow Inn Beef 4-H 227-1681  
Cottonwood Kayaking Club 227-2833  
Thundering Hoofbeats 4-H 227-2194  
Olds Air Cadet Squadron 556-7630  
Innisfail Food Bank 224-3359

### **BOWDEN PUBLIC LIBRARY**

The Bowden Public Library is a member of the Parkland Library System, a regional library system that helps libraries provide the best possible service for library users. Located at 1700 - 23 St, the library is also online with the Alberta Library. This means that with your library card, you can use any library in Parkland, or any of up to 300 libraries around the province that are participating in the Alberta Public Library Electronic Network. The books you want to borrow will be sent to and can be returned to the Bowden Public Library.

You will also be able to access your library and the Alberta Library through the internet using your library card and PIN number. This will also give you access to a number of databases, such as magazines and journals, newspapers and newswires - without a trip to the library.

#### Effective Sept 1, 2005:

Sunday - Closed  
Monday - 6 - 9 pm  
Tuesday - 10 am - 5 pm  
Wednesday - 6 - 9 pm  
Thursday - 10 am - 5 pm  
Friday - Closed  
Saturday - 1 - 4 pm

The Bowden Public Library has four computers that can be used for the internet and e-mail as well as many programs of interest to the public. Come in and check them out. Need help? The knowledgeable staff will help you get started, or find what you need.

Library Manager - Diane Berggren  
Library Manager's Assistant - Julie Brown  
E-Mail: [bowdenlibrary@libs.pr1.ab.ca](mailto:bowdenlibrary@libs.pr1.ab.ca)

### **WE WELCOME VOLUNTEERS TO THE LIBRARY!**

The Library runs various Children's Programs throughout the year and promotes visits to the library. A Senior's Day is held in conjunction with Alberta Seniors Week. The Library is an active participant in the annual Bowden Daze celebrations in July. We also have

ongoing Sales of Used Books.

Bowden Public Library presents a summer program each year, using a different theme each year. This year we are teaming up with Neighbourhood Place, having a swim program in the morning, and the Library in the afternoon. There will be crafts, stories and games. The age group is 4-12 years for the Library program. The theme this year is "Quest for Heroes".

## Community Lifestyle

Conveniently located on Highway 2, this bedroom community of almost 1,200 people is located approximately 25 minutes south of Red Deer and 50 minutes north of Calgary.

With affordable housing and amenities of a much larger centre, the Town has benefitted from Alberta's strong economy as indicated by 16% population growth over the last five years. Bowden's future growth remains positive as the Town has begun working with a developer to add over 200 new residential lots with several being located just off the Golf Course.

Bowden has a long history dating back to 1887 when homesteaders arrived and constructed the Brewster House hotel. Incorporated as a village in 1904 and, as a Town in 1981, the Town of Bowden celebrated its Centennial in 2004.

Bowden offers an enviable quality of life for all ages. An abundance of parks and new playgrounds offer families recreational opportunities right at their doorstep. Minor sports teams continue to succeed at levels far higher than most communities this size. The fair, but challenging 9 hole golf course remains very popular with both residents and visitors.

For school aged children, the Bowden Grandview School continues to achieve high academic standards and rates very high in the Provincial rating system.

Residents have several choices of medical facilities located within 10 minutes, at the Town in Olds or Innisfail and a first class facility in Red Deer 25 minutes away.

For seniors, the Town has two manors offering affordable housing and, with regular trips in the community van, easy access to many regional amenities.

## Education

Bowden Grandview School is a public education facility offering kindergarten through grade twelve. It is included in the Chinook's Edge School Division. The school has a capacity of approximately 550 students and consistently achieves a high academic standing for graduating students. This is evidenced by the school consistently ranking in the top three for Alberta Departmental Exams.

The school also strives to introduce modern technology, into its classroom environment, starting with the Grade two model technology classroom. The Grade one students even have their own web page! For the higher grades the school has a fully functioning CTS lab where students learn media productions and web page development.

Some students prefer the Off Campus Learning Centre. For more information, call 224-3992.

For parents with younger children the Bowden Playschool runs concurrently with the school year and has classes for children who are three and four years old.

## Emergency Services

**9-1-1** is the official national emergency number in Canada. Dialing 911 quickly connects you to a dispatcher trained to route your call to local emergency medical, fire, and law enforcement agencies. 9-1-1 lines are reserved for emergency calls to report a crime in progress, or a fire, or to request an Ambulance. Using 9-1-1 for non-emergency calls may delay the arrival of help for people caught in real emergencies. For any emergency in Bowden, dial 9-1-1.

### **VOLUNTEER FIRE DEPARTMENT**

The Bowden Fire Hall is located at 2114 - 20th Avenue. The Volunteer Fire Department provides primary fire and emergency medical services to the Town of Bowden and surrounding area. This Department has a volunteer fire department with approximately 20 active volunteer members. The Department runs 1 tank truck, 2 pumpers, and 2 support vehicles. Volunteer membership is available to citizens at least 18 years of age, have a clean criminal record, live close to the Town of Bowden and are physically fit. Individuals who are willing to donate their time and talents to helping the community are essential to the success of the fire department. For more information, phone 224-2246 or send an E-Mail to [bvfd@telusplanet.net](mailto:bvfd@telusplanet.net).

### **POLICE**

The Town of Bowden is serviced by the Royal Canadian Mounted Police, Olds Department (556-3323). The Royal Canadian Mounted Police is the Canadian national police service and an agency of the Ministry of Public Safety and Emergency Preparedness Canada. The RCMP is unique in the world since it is a national, federal, provincial and municipal policing body. They provide a total federal policing service to all Canadians and policing services under contract to the three territories, eight provinces (except Ontario and Quebec), approximately 198 municipalities and, under 172 individual agreements, to 192 First Nations communities.

#### Contact Information:

911 Emergency Calls Only

556-3323 Complaints

556-3324 Administration

556-1540 Fax 5110 - 65 Ave, Olds Alberta, T4H 1L8

Hours: 8:30 am to 4:00 pm Monday to Friday

### **CITIZENS ON PATROL**

It is a concept that originated in Western Canada. Ordinary citizens supplement police patrols to help reduce crime by keeping a neighbourly watch over their communities. Patrols watch for any unusual and/or criminal activity, and report such incidents to the police for any necessary follow-up.

Citizens on Patrol have neither the authority nor the mandate to make arrests, nor to take any action that might jeopardize their own safety or that of the public. The role of Citizens on Patrol is to simply observe and report.

To volunteer for Citizens on Patrol, applicants must be 18 years of age or older, have a clear record, and be able to pass an R.C.M.P. security screening. All necessary training

and equipment (aside from personal vehicles) is provided by Citizens on Patrol or the R.C.M.P. Contact 224-2354.

## **SEARCH & RESCUE**

Olds Search and Rescue handles search and rescue emergencies for the Town of Bowden and area. OSAR is also a resource for the Town of Olds, Mountain View County and the Province of Alberta. For more information, call 556-6617, 556-3839 or 507-3368 or check out their website at [www.telusplanet.net/public/osar](http://www.telusplanet.net/public/osar).

Community services have included initiation and collaboration on such programs as the Breakfast Program, Summer Fun, Bowden Youth Project, Pick A Passion Day, and the BLAST Being Belonging and Becoming youth conference.

For more information, please call 403-224-2264.

## **EMERGENCY CONTACTS**

The Town of Bowden is committed to ensuring our residents are aware of the programs and services in town, have good social support networks, and have a chance to become connected to, and part of the community life. Please feel free to contact any of the Emergency or Social Services organizations provided here.

### **AREA CODE FOR BOWDEN IS 403**

24 Hour Emergency - Power 310-9473  
24 Hour Emergency - Gas 1-800-511-3447  
Poison Control Centre 1-800-332-1414  
Alberta Mental Health Board 1-877-303-2642  
Alcoholics Anonymous 556-9415  
Block Parents 224-2980  
Central Alberta Women's Emergency Shelter 403-346-5643  
Crimestoppers 1-800-222-8477  
Distress/Crisis Line (24 hours) 340-1120  
Gambling Help Line 1-800-665-9676  
Kids Help Phone Line 1-800-668-6868  
Lifeline 227-1561  
Neighbourhood Place 224-3319  
Parent Helpline 1-800-603-9100

## **Health Care**

### **HEALTH CENTRES**

The Town of Bowden is part of the David Thompson Regional Health Authority. Third largest health region by population, the DTHR serves 282,900 residents, covers 60 thousand sq km of territory and employs about 8000 staff. There are over 350 practicing physicians in the region. Bowden residents can utilize the services provided by the Innisfail Hospital & Health Centre at 5023 - 42 St (Ph: 227-7800), or the Olds Hospital & Care Centre at 3901 - 57 Ave (Ph: 556-3381).

### **AREA CODE FOR OLDS & INNISFAIL IS 403**

Innisfail Health Centre/Hospital 5023 - 42 St 227-7800  
Innisfail Community Home Care 5023 - 42 St 227-7020  
Innisfail Public Health Nurse 5023 - 42 St 227-7820  
Olds Hospital & Care Centre 3901 - 57 Ave 556-3381  
Olds Community Health Centre 556-8441

## **FAMILY WELLNESS**

Bowden Family Wellness offers support services to families with children from birth to 18 years. Services may include: parenting assistance, access to resources (financial, mental health, intervention), parenting library, and short term solution focussed counselling. Bowden Family Wellness is adept at addressing issues of bullying, peer groups, adolescent addictions, divorce, grief and conflict/anger. All contact is CONFIDENTIAL.

## **MEDICAL CLINICS**

Bowden has a massage therapist and physiotherapy clinic. There are excellent facilities just ten minutes south of Bowden at Olds, and ten minutes north of Bowden at Innisfail.

## **AREA CODE IS 403**

Bowden Massage Therapy 224-3929

Bowden Physiotherapy Clinic 224-3929

Innisfail Associate Clinic 227-3301

Innisfail Medical Clinic 227-3356

Innisfail Mental Health Clinic 227-4601

Olds Associate Clinic 556-3355

Wildrose Medical Centre, Olds 556-7130

## **FAMILY & COMMUNITY SUPPORT SERVICES (FCSS)**

The municipal government of Bowden and the provincial government fund programs offered through Family & Community Support Services. FCSS has the objective of building strong communities through prevention, self-help, and volunteerism. The strength of FCSS is community development.

### **What is FCSS?**

FCSS is a program between the province and local municipalities with the objective of building strong communities through prevention, self-help and volunteerism.

### **FCSS Programs:**

Are preventative in nature

Promote citizen participation

Enables local decision making

Programs which have been or continue to be offered by FCSS:

Referrals and Information

Volunteer Coordination and Support

Community Directory

Welcome to Bowden Packages

Tools for Schools

Volunteer Appreciation

Community Registration Night

Mother Goose

The Bowden FCSS Worker is Marie Fredrickson.

Office is located in Neighborhood Place: 2016-20 Ave

Phone: 403-224-3319 ... Fax: 403-224-3318

E-Mail: [bowdenfcss@telus.net](mailto:bowdenfcss@telus.net)

### **Regular hours of operation are:**

Mondays and Tuesdays: 8:30 am - 4:30 pm

Thursdays: 9 am - Noon

As the Community Worker is frequently out of the office at meetings or community

visits, please leave a message and I will return your call as soon as possible.

## Key Contacts for Business Development

### **MUNICIPAL (Updated April 2006)**

Town of Bowden

2110 20 Avenue

Box 338

Bowden, AB, T0M 0K0

Phone: 403-224-3395

Fax: 403-224-2244

Email: [cao@town.bowden.ab.ca](mailto:cao@town.bowden.ab.ca)

### **Council:**

Mayor Cody Berggren

Councillor Shirley Adams

Councillor Sheila Church

Councillor Mildred Lane

Councillor Andy Plummer

Councillor Robb Stuart

Councillor Bernice Willsie

Chief Administrative Officer Dan Proctor

### **PROVINCIAL (Updated April 2006)**

Honourable Luke Ouellette (PC)

MLA for Innisfail-Sylvan Lake

Eastgate Mall #18, 4804 42 Avenue

Innisfail, AB

T4G 1T4

Phone: (403) 227-1500

Toll Free: 1-888-655-2535

Fax: (403) 227-5350

[innisfail.sylvanlake@assembly.ab.ca](mailto:innisfail.sylvanlake@assembly.ab.ca)

Legislature Office

#319 Legislature Building

10800 - 97 Avenue

Edmonton, AB

T5K 2B6

Phone: (780) 422-7355

Fax: (780) 422-5279

### **FEDERAL (Updated April 2006)**

THOMPSON, Myron (Conservative)

Wild Rose, Alberta

213 Main Street, Bay 3, P.O. Box 3816

Airdrie, Alberta

T4B 2B9

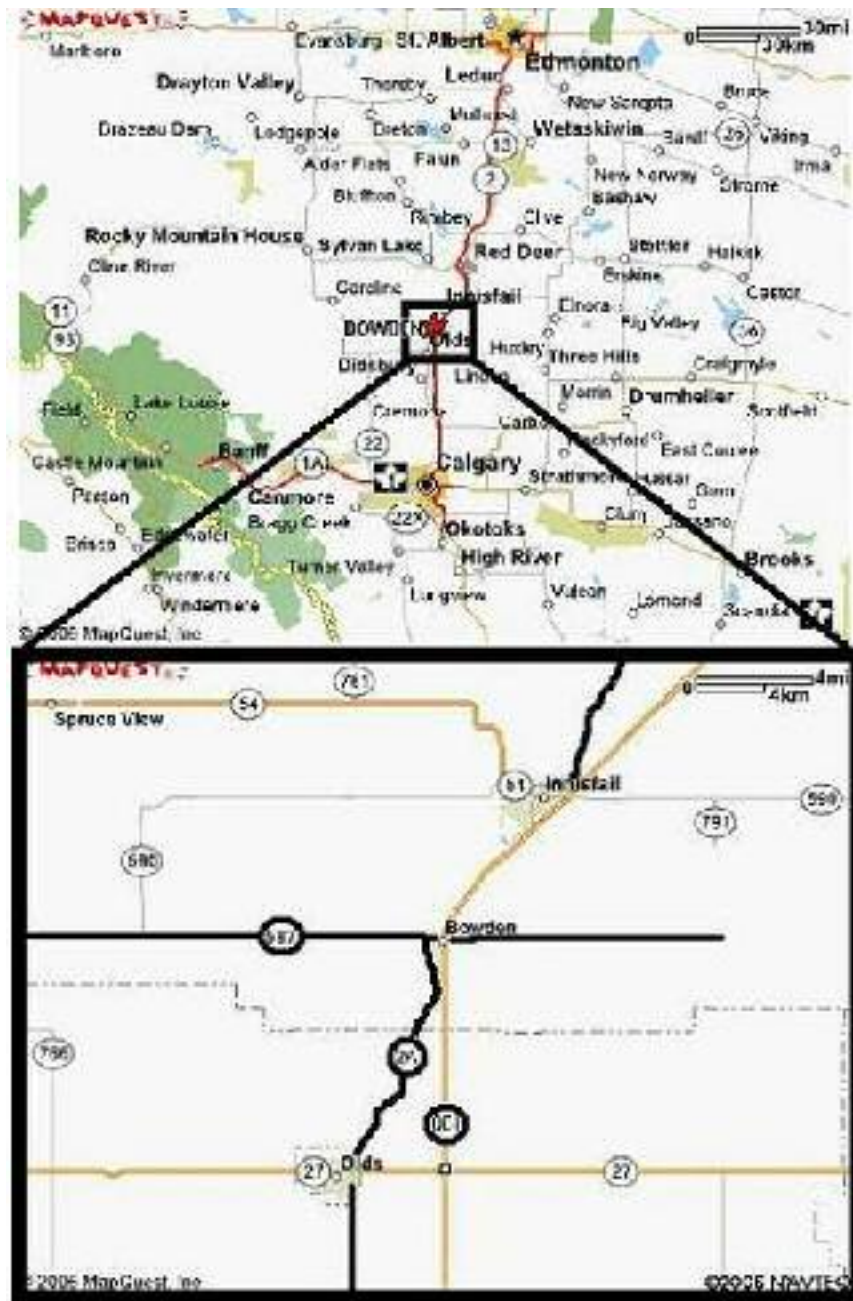
Telephone: (403) 948-5103

Fax: (403) 948-0879

E-Mail: [ThompM1@parl.gc.ca](mailto:ThompM1@parl.gc.ca)

## Location

The Town of Bowden is located directly adjacent to the Queen Elizabeth II (QEII) Highway, approximately 80km (45 minutes) North of the City of Calgary and 40km (22.5 minutes) South of the City of Red Deer. Centrally located with direct access to Alberta's power corridor, Bowden offers residents and businesses alike a small town atmosphere and prices only a short drive from major urban centres. Highway 587 which also goes through Bowden provides easy access for residents to the beautiful west country and all of its numerous recreational possibilities and for businesses to the busy logging and oil & gas operations located there.



## Post Secondary Education

Post secondary opportunities also exist within short driving distance at Olds College and Red Deer College. The University of Calgary is within an hour of the Town.



# Taxation

---

	<u>Residential/Farmland</u>	<u>Non-Residential</u>
<b>2005</b>		
Municipal Tax Rate	10.1500	14.0000
Education - Alberta School Foundation Fund Tax Rate	4.2300	6.8600
Seniors Lodge Accommodation Tax Rate		

---

## Utilities

### RECYCLING, GARBAGE AND WASTE

The Town of Bowden is committed to responsible distribution of waste. The Public Works Department picks up household garbage every Wednesday. In order to ensure your garbage is picked up, please have it placed at the back laneway or front curb (if your property doesn't have a back laneway) by 8 am. Cardboard will be picked up after the household garbage run has completed. Usually, this is Wednesday afternoon or Thursday. Burnable materials (i.e. small trees & branches) can be picked up by the Town. Materials must be in manageable lengths and size. Please contact the Town Office to schedule pick up of burnables.

The Town only picks up garbage and burnables. Grass clippings (no trees or branches) must be hauled by the property owner/occupant, to designated compost bins located throughout town. Paper products must be hauled by the property owner/occupant, to the Paper Recycling trailer located across from Town Office. It is the responsibility of the property owner/occupant to haul old furniture, mattresses, and appliances to a Regional Landfill Commission transfer station in Innisfail.

There are seven compost bins located at convenient locations throughout Town. Compost bins are painted either blue or white and are open at one end.

The Town operates the Recycling Trailer located on Main Street across from the Post Office. The Recycling Trailer has bins for paper. The Trailer is open Monday through Saturday from 8 am to 4 pm. There is, however, a blue box for paper to be deposited after hours or by individuals who cannot climb the paper trailer stairs. Occasionally, when the trailer is full and the Town is waiting for paper pick up, the trailer will be closed and a sign hung advising of that closure.

The Town belongs to a regional landfill commission, and all garbage is hauled to a landfill site in Red Deer. The commission has located a transfer station in Innisfail for garbage which would not normally be picked up by town crews.

Thanks to the Alberta Dairy Council, there is also one bin for cardboard milk containers and one for plastic milk containers on Main Street. Residents are asked to wash out all milk containers and crush them before bringing them to the Trailer. As well, the Town hauls all materials, from blue and white compost bins, to a composting pile just outside of Town. With a successful grant application, the Town is expanding its recycling in 2004, to include tin cans, glass, plastic and cardboard.

### WATER, SEWER, AND OTHER UTILITIES

Bowden receives its water from the Red Deer River, from the Anthony Henday Water

Treatment Plant at Innisfail. Along with Carstairs, Crossfield, Didsbury, Olds and Innisfail, the Town of Bowden belongs to the Mountain View Regional Water Services Commission. The Town of Bowden provides water and wastewater (sewer) services. When you move to Bowden, you need to apply at Town Office to receive these services.

Water bills are sent out every two months. Water usage is determined by the number of people in your household, the number of water saving devices in your home and how often you water your lawn in the summer. Your bi-monthly invoice includes garbage pickup fees and water/sewer charges. For more information, call the Town Office at 224-3395.

**NOTE:** - Mountain View Regional Water Services Commission has increased its water distribution rates by 5 cents per cubic meter to all member municipalities effective April 1, 2006. As per Town of Bowden Bylaw 01-2006, this increase will be reflected on your utility bill effective May 1, 2006.

**AREA CODE FOR BOWDEN IS 403**

Gas ATCO 310-5678 [www.atcogas.com](http://www.atcogas.com)

Power FortisAlberta 310-4300 [www.fortisalberta.com](http://www.fortisalberta.com)

Phone, Residential Telus 310-2255 [www.telus.com](http://www.telus.com)

TV Cable SHAW 340-6400 [www.shaw.ca](http://www.shaw.ca)

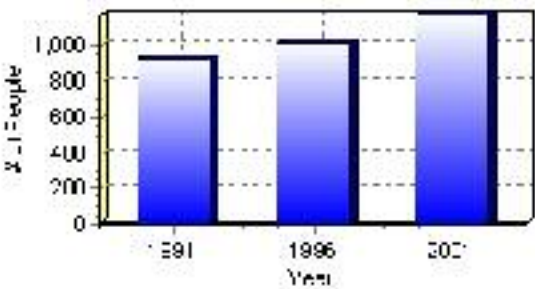
# Population

## Total Population

Population 2004*	1,174
Population 2003*	1,174
Population 2002*	1,174
Population 2001**	1,175
Population 2000*	1,014
Population 1996**	1,014
Population 1991**	923
Population % change 1991-1996	8.97%
Population % change 1996-2001	13.63%

\* Source: Official Population List, Alberta Municipal Affairs  
\*\* Source: Statistics Canada 1991, 1996, & 2001 Census

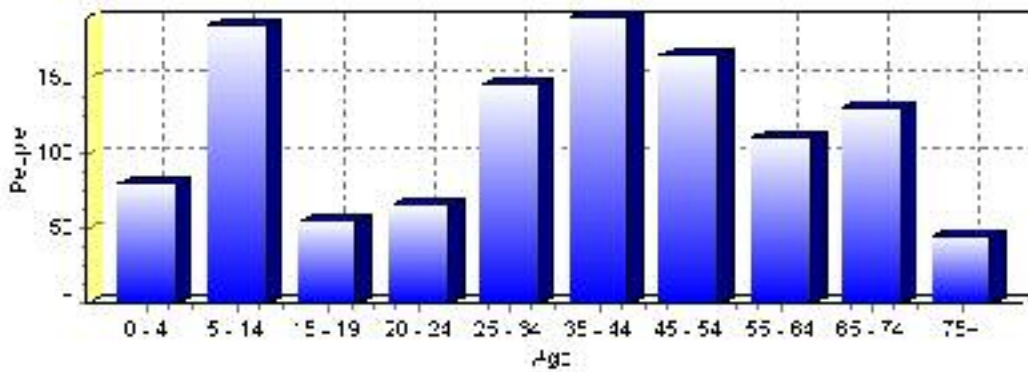
## Total Population 1991-2001



Population by Age and Gender	1996 Male	1996 Female	1996 Total	2001 Male	2001 Female	2001 Total
Age 0 - 4	35	35	70	40	40	80
Age 5 - 14	65	65	130	110	75	185
Age 15 - 19	30	40	70	30	25	55
Age 20 - 24	25	30	55	20	45	65
Age 25 - 34	70	55	125	75	70	145
Age 35 - 44	75	85	160	100	90	190
Age 45 - 54	55	70	125	75	90	165
Age 55 - 64	60	70	130	55	55	110
Age 65 - 74	65	45	110	60	70	130
Age 75 and older	25	30	55	30	15	45
Total All Persons	500	510	1,010	595	580	1,175

Source: Statistics Canada 1996 & 2001 Census (numbers may not add up due to rounding)

### Bowden Population by Age Group (2001)

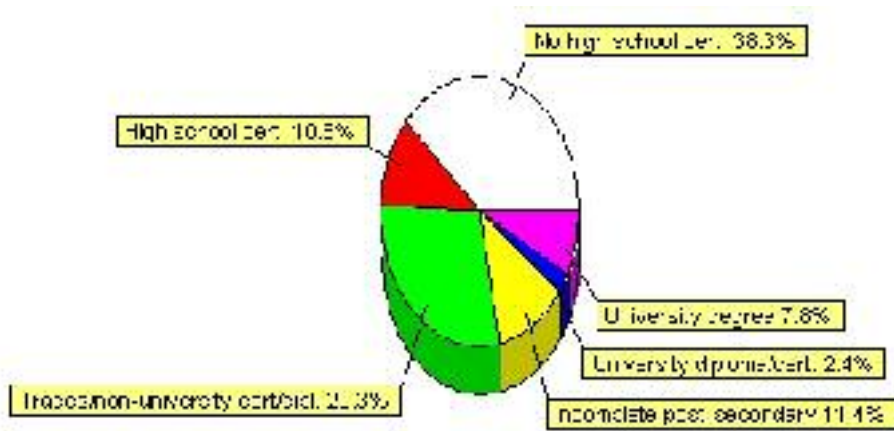


# Education Statistics

Highest level of schooling for Population 20yrs and older	2001	%
People without high school certificates	320	38.32%
People with high school certificates	90	10.78%
People with trades or non-university certificate or diploma	245	29.34%
People with post-secondary education (not completed)	95	11.38%
People with university diploma/certificate	20	2.40%
People with university degree	65	7.78%
Total Population 20 years and older	835	100.00%

Source: Statistics Canada 2001 Census (numbers may not add up due to rounding)

## Bowden Highest Level of Schooling 2001



Population with Post Secondary Qualifications	1996	%	2001	%
Agriculture and biological sciences	15	5.08%	20	5.97%
Commerce, management and business administration	40	13.56%	15	4.48%
Educational, recreational and counseling services	25	8.47%	45	13.43%
Engineering and applied science tech. and trades	140	47.46%	105	31.34%
Engineering and applied sciences	0	0.00%	10	2.99%
Fine and applied arts	10	3.39%	20	5.97%
Health professionals, science and technologies	30	10.17%	25	7.46%
Humanities and related fields	0	0.00%	15	4.48%
Mathematics and physical sciences	0	0.00%	0	0.00%
Social sciences and related fields	15	5.08%	50	14.93%
Other and/or no specialization	0	0.00%	0	0.00%
Total people with post secondary qualifications	295	100.00%	335	100.00%
Females with post-secondary qualifications	150	50.85%	130	38.81%
Males with post-secondary qualifications	145	49.15%	205	61.19%

Source: Statistics Canada 1996 & 2001 Census (numbers may not add up due to rounding)

## Labour Force

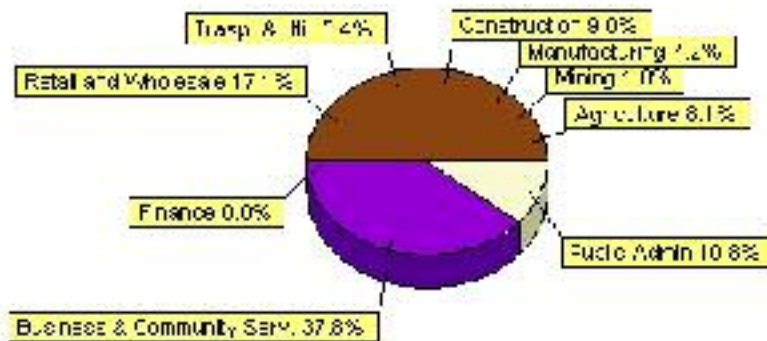
Labour force by activity	1996	2001
In the labour force, both sexes	500	560
Not in the labour force, both sexes	330	340
Total population 15 and over	830	900
Employed, both sexes	430	535
Unemployed, both sexes	70	25
Participation rate, both sexes	60.00%	62.00%
Unemployment rate, both sexes	14.00%	5.00%

Source: Statistics Canada 1996 & 2001 Census (numbers may not add up due to rounding)

Labour Force by Industry Division	1996	% of total	2001	% of total
Agriculture	30	6.19%	45	8.11%
Mining	40	8.25%	10	1.80%
Manufacturing	35	7.22%	40	7.21%
Construction	40	8.25%	50	9.01%
Transportation. & Utilities	15	3.09%	30	5.41%
Retail and Wholesale	95	19.59%	95	17.12%
Finance	0	0.00%	0	0.00%
Business & Community Services	165	34.02%	210	37.84%
Public Administration	35	7.22%	60	10.81%
Total All Industries	485	100.00%	555	100.00%

Source: Statistics Canada 1996 & 2001 Census (numbers may not add up due to rounding)

### Bowden Labour Force By Industry - 2001



Labour Force by Major Occupational Groups	1996	%	2001	%
Management occupations	30	6.25%	40	7.21%
Business, Finances and administrative occupations	55	11.46%	45	8.11%
Natural and applied sciences and related occupations	10	2.08%	40	7.21%
Health occupations	10	2.08%	25	4.50%
Occupations in social science; education; government and religion	20	4.17%	25	4.50%
Occupations in art; culture; recreation and sport	0	0.00%	20	3.60%

Sales and service occupations	155	32.29%	145	26.13%
Trades; transport; equipment operators and related occupations	105	21.88%	145	26.13%
Occupations unique to primary industry	60	12.50%	35	6.31%
Occupations unique to processing; manufacturing and utilities	40	8.33%	35	6.31%
Occupations not elsewhere classified	15	3.13%	10	1.80%
Total - All Occupations (major groups)	480	100.00%	555	100.00%
Females - All Occupations	230	47.92%	255	45.95%
Males - All Occupations	250	52.08%	295	53.15%

Source: Statistics Canada 1996 & 2001 Census (numbers may not add up due to rounding)

---

## Income

<b>Family Income (Number of Families)</b>	<b>1996</b>	<b>%</b>	<b>2001</b>	<b>%</b>
less than \$19,999	30	12.00%	40	13.79%
\$20,000 - \$39,999	85	34.00%	120	41.38%
\$40,000 - \$59,999	75	30.00%	70	24.14%
\$60,000 and over	60	24.00%	85	29.31%
Total number of families	250	100.00%	315	108.62%
Average family income	\$48,505		\$47,058	
Median family income	\$45,142		\$40,684	

Source: Statistics Canada 1996 & 2001 Census (numbers may not add up due to rounding)

<b>Household Income (Number of Households)</b>	<b>1996</b>	<b>%</b>	<b>2001</b>	<b>%</b>
less than \$19,999	150	34.88%	105	21.65%
\$20,000 - \$39,999	110	25.58%	160	32.99%
\$40,000 - \$59,999	90	20.93%	105	21.65%
\$60,000 and over	15	3.49%	120	24.74%
Total number of households	430	100.00%	485	100.00%
Average household income	\$37,601		\$40,991	
Median household income	\$29,560		\$35,072	

Source: Statistics Canada 1996 & 2001 Census (numbers may not add up due to rounding)

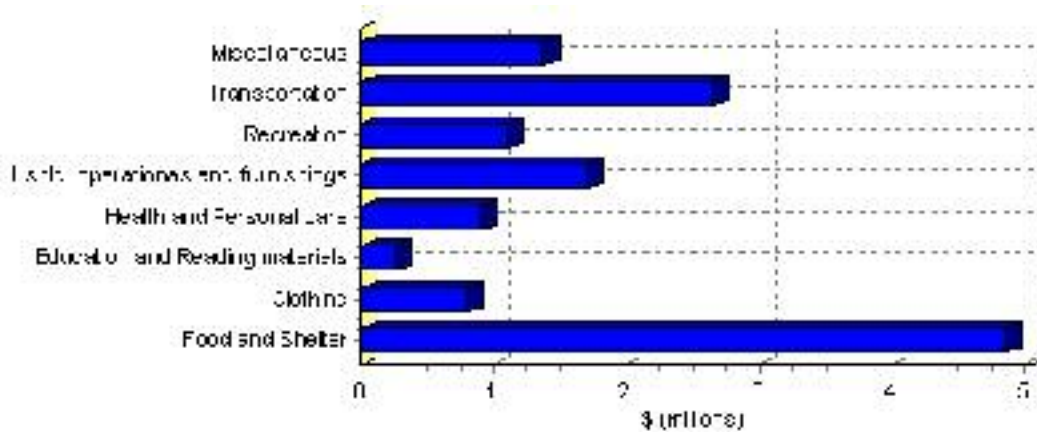


# Family Expenditure

Expenditure Category	1992	% of total	1996	% of total
Food and Shelter	\$3,829,515	37.85%	\$4,862,396	35.57%
Clothing	\$670,425	6.63%	\$806,566	5.90%
Education and Reading materials	\$192,485	1.90%	\$261,394	1.91%
Health and Personal care	\$645,485	6.38%	\$904,175	6.61%
Hshld. operations and furnishings	\$1,103,020	10.90%	\$1,710,245	12.51%
Recreation	\$756,525	7.48%	\$1,101,289	8.06%
Transportation	\$2,091,115	20.67%	\$2,650,490	19.39%
Miscellaneous	\$825,570	8.16%	\$1,372,869	10.04%
Total Current Consumption	\$10,118,635	100.00%	\$13,669,424	100.00%
Total # of Households	380		430	
Average Consumption per Household	\$26,628		\$31,789	

Source: Statistics Canada Family Expenditure Survey 1992 & 1996 (numbers may not add up due to rounding).

## Bowden Family Expenditures (1996)

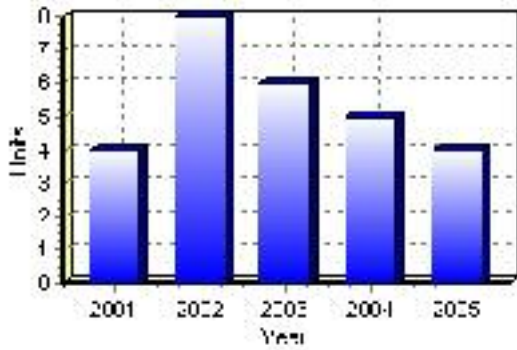


# Building Permits

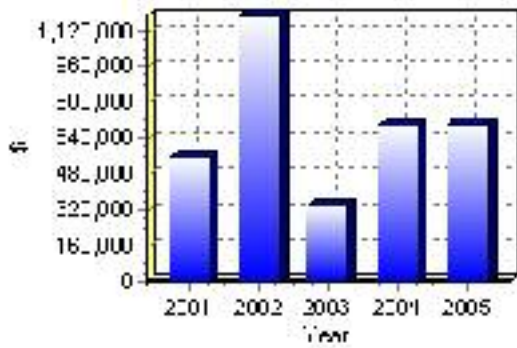
Total Building Permit Values	2001	2002	2003	2004	2005
Building Permits Value, Commercial	\$100,000	\$210,000	\$3,000	\$24,000	\$39,000
Building Permits Value, Industrial	\$0	\$0	\$0	\$55,000	\$55,000
Building Permits Value, Institutional	\$44,000	\$0	\$0	\$0	\$0
Building Permits Value, Residential	\$411,000	\$977,000	\$332,000	\$618,000	\$607,000
Building Permits Value, Total	\$555,000	\$1,187,000	\$335,000	\$697,000	\$701,000
Total Housing Starts	4	8	6	5	4

Source: Statistics Canada 2000-2004 Building Permits (numbers may not add up due to rounding)

## Total Housing Starts



## Value of Building Permits



## Dwellings

<b>Occupied Private Dwellings by Type</b>	<b>1996</b>	<b>% of total</b>	<b>2001</b>	<b>% of total</b>
Apartments	30	6.98%	60	12.37%
Detached Duplexes	0	0.00%	10	2.06%
Movable Dwellings	85	19.77%	85	17.53%
Other single attached house	0	0.00%	0	0.00%
Row and semi-detached house	45	10.47%	15	3.09%
Single-detached house	260	60.47%	320	65.98%
Total number of occupied private dwellings	430	100.00%	485	100.00%
Private dwellings, owned	295	68.60%	365	75.26%
Private Dwellings, rented	135	31.40%	125	25.77%

Source: Statistics Canada 1996 & 2001 Census (numbers may not add up due to rounding)

<b>Private Dwellings by Period of Construction</b>	<b># of Dwellings</b>	<b>% of total</b>
Period of construction, before 1946	80	16.33%
Period of construction, 1946 - 1960	45	9.18%
Period of construction, 1961 - 1970	50	10.20%
Period of construction, 1971 - 1980	175	35.71%
Period of construction, 1981 - 1990	40	8.16%
Period of construction, 1991 - 2001	100	20.41%
Total number of private dwellings constructed	490	100.00%

Source: Statistics Canada 2001 Census (numbers may not add up due to rounding)

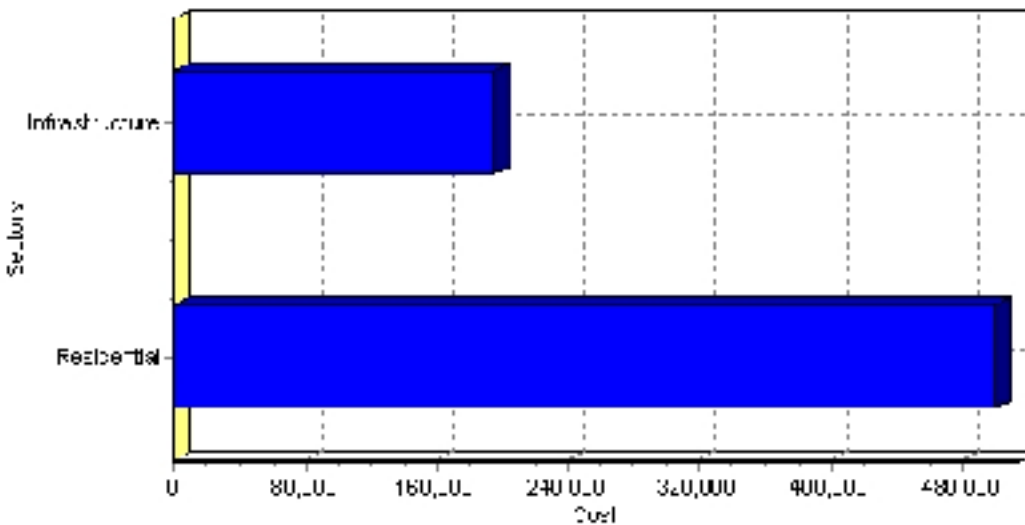
# Projects

## Summary of Projects in Bowden as of September 2006

Project Sector	Number of Projects	Project Cost
Residential	1	\$500,000
Infrastructure	1	\$195,030
Total	2	\$695,030

This inventory lists projects in Alberta that have recently been completed, are under construction, or are proposed to start construction. Not all projects are listed due to reasons of confidentiality and/or due to information not being available at the time of printing. Project data is obtained from public information sources, where possible, this data has been verified with the project proponent/developer, users of the Inventory may wish to confirm project data with the proponent/developer. The inventory does not breakdown project expenditures by any given year. The cost of a project is the value of expenditures expected over all phases of project construction, which may span over two or more years. Cost of projects listed in the Inventory are estimated values only. Source: Alberta Economic Development, 2004.

## Value of Projects by Sector (as of September 2006)



Project Status	Number of Projects	Project Cost
Announced	2	\$695,030
Total	2	\$695,030

This inventory lists projects in Alberta that have recently been completed, are under construction, or are proposed to start construction. Not all projects are listed due to reasons of confidentiality and/or due to information not being available at the time of printing. Project data is obtained from public information sources, where possible, this data has been verified with the project proponent/developer, users of the Inventory may wish to confirm project data with the proponent/developer. The inventory does not breakdown project expenditures by any given year. The cost of a project is the value of expenditures expected over all phases of project construction, which may span over two or more years. Cost of projects listed in the Inventory are estimated values only. Source: Alberta Economic Development, 2004.

## Largest Projects in Bowden as of September 2006

<b>Company Name</b>	<b>Project Description</b>	<b>Project Location</b>	<b>Project Cost</b>	<b>Construction Schedule</b>	<b>Status</b>
Town of Bowden	Westview Meadows Subdivision	Bowden	\$500,000	2006-2006	Announced
Town of Bowden	Overlay & Paving	Bowden	\$195,030	2006-2006	Announced

Disclaimer: Information in this profile has been provided from a variety of external sources. Although every effort has been made to ensure the accuracy, currency and reliability of the content and data, AlbertaFirst.com Ltd. accepts no responsibility in this regard.

© AlbertaFirst.com Ltd., 2006.