

# Carbon

[www.gowildrose.com/carbon/](http://www.gowildrose.com/carbon/)

## Welcome

### Welcome to Carbon

Nestled in the Kneehill Creek Valley, this small community has much to offer its residents and visitors. Recreational facilities, unique shopping opportunities, and friendly people - it's all here.



## Area Overview

Ranch settlement in the Carbon district began in the late 1800's. At the time, coal mines were already operating in the region, and they continued to operate until the late 1950's.

Today, several gas plants are located in the area and the local economy remains stable with the assistance of several large employers and elevators. Developed recreational facilities also lend to the landscape of Carbon.

### ALBERTA, THE BEST PLACE TO WORK, LIVE AND DO BUSINESS

The province of Alberta is a leader in the Canadian economy. Alberta has had the fastest growing economy in Canada over the past two decades, with real GDP growth averaging 3.7 percent per year. Highlighting Alberta's success in the past year is:

- Over \$73.2 billion in international exports of goods and services (2004)
- Manufacturing shipments of \$52.6 billion (2004)
- Creation of 40,000 new jobs in 2004 and 433,900 between 1994 and 2004
- Over \$103 billion in major capital projects are proposed, announced, under construction or recently completed (2004)

Source: [Alberta Economic Development](#)

### Alberta's Positive Business Climate

- The lowest overall taxes in Canada
- No provincial sales tax
- No general capital or payroll taxes prevalent in other provinces and U.S. states  
A highly entrepreneurial and competitive business community
- A fiscally responsible government that has eliminated its provincial debt, demonstrating to investors the business-like attitude of the government



- A highly skilled, educated and motivated workforce that is the most productive in Canada.

Source: [Alberta Economic Development](#)

## Climate

### AVERAGE TEMPERATURE

#### January

Maximum temperature = -6.3 Celcius

Minimum temperature = -16.7 Celcius

#### July

Maximum temperature = 23.5 Celcius

Minimum temperature = 9.9 Celcius

Annual percipitation = 431.9 mm

Source: [Environment Canada](#)

## Community Services

### BUSINESS SUPPORT SERVICES

#### Wild Rose Economic Development Corporation

Box 2159

2nd Floor, 203 3rd Avenue

Hilton Plaza

Strathmore, Alberta

T1P 1K2

1-888-881-9675

(403) 934-6488 phone

(403) 934-6492 fax

Email: [wildrose@wildrose.ab.ca](mailto:wildrose@wildrose.ab.ca)

Website: [www.gowildrose.com](http://www.gowildrose.com)

Services include: career center for employers and employees, small business assistance, financing and referral.

[Alberta Human Resources and Employment](#) is a provincial department that focuses on people skills and the workplace. They provide a broad range of service to both employees and employers.

[Human Resources & Skills Development Canada](#) is a federal department that provides a broad range of services for employees and employers.

### Municipal

#### Village of Carbon

Box 249

Carbon, Alberta, T0M 0L0

Tel: 403-572-3244

Fax: 403-572-3778

Email: [admincarbon@wildroseinternet.ca](mailto:admincarbon@wildroseinternet.ca)

## Community Lifestyle

### PEACE OF MIND

Carbon is part of the Wild Rose Region. Many residents and business owners choose to locate in the Region because of the safety and security of small town living. As indicated by the below table, crime statistics are substantially lower in the region than typical of a larger metropolitan center like the City of Calgary.

CRIME RATE COMPARISON		
	Wild Rose Region*	Calgary*
Homicide	0	0.01
Assault	7	16
Robbery	0	2
Break and Enter	6	17
Theft of a Vehicle	5	11
Theft from a Vehicle	6	19
Mischief Offences	10	21

\* Per 1,000 residents

Sources: RCMP Crime Statistics 2002, City of Calgary Police Service 2002

Carbon offers residents rural community values and an affordable country lifestyle close to the amenities within the region and the neighboring metropolitan centers. Despite favorable economic growth, it's still very affordable to buy a home and live in the Wild Rose Region.

The region offers the most affordable local utilities, based on comparison with Calgary and area utilities. In the Wild Rose Region, local utilities (water, sewer and garbage) are approximately 26% lower than the average of communities in and around Calgary (Benchmarks Nichols Applied Management, 2000).

### RECREATION

Local recreation facilities include two serviced campgrounds, parks, playgrounds, swimming pool, outdoor skating rink, two baseball diamonds, curling rink, and rodeo grounds. There are also nature/walking trails, and a sand volleyball court.

- Carbon Municipal Campgrounds  
Open May through September 30. Carbon Main Campground has 19 power, water, and sewer sites, and 3 power/water sites. Carbon East has 17 power/water sites. A shower house and sewage disposal is located at both the Main and East Campground, and all users may use these services. Reservations recommended at (403) 572-3244.
- Ball Diamonds  
Phone (403) 572-3244 for bookings.
- Carbon Community Centre  
Open year round for weddings, parties or other special events. Phone (403) 572-3244 for bookings.
- Carbon Curling Rink Open October to March. Facility also available year-round to rent for private functions. Phone (403) 572-3533 or (403) 572-3244.
- Carbon Outdoor Skating Rink  
Open November through February/March, weather permitting. Phone (403) 572-3244 for scheduling.
- Carbon Outdoor Swimming Pool Open May long weekend to Labour Day. Phone (403) 572-0006 for scheduling and lesson information.
- Carbon Municipal Library Open Tuesday - 6pm to 9pm, Wednesday - 7pm to 9pm, Thursday - 11am to 4:30pm and Saturday -

11am to 2pm. Located on the back side of the Community Centre.

[Click here](#) to go to the web site.

- New Horizons Drop-In Centre  
Facility open year round to adults.

## COMMUNITY ORGANIZATIONS

Carbon Agricultural Society	Curling Club	Carbon Community Centre	Carbon New Horizons Club
Carbon Recreation Board	Carbon Wellness Centre	Carbon Volunteer Fire Department	Carbon Minor Soccer
Carbon Heritage Quilters	Carbon Public Library	4-H Club - Horse and Beef	
Lions Club	Royal Canadian Legion	Carbon and Area Restoration Society	

## RELIGIOUS SERVICES



Carbon Baptist Church

Carbon United Church

## ANNUAL COMMUNITY EVENTS

- Carbon 'Piecing in the Valley' Quilt Show & Strawberry Tea Held the first weekend in May. Carbon and area quilters display their quilts. The quilt is given to charity or an organization to aid in their fundraising activities. A Vendor's Market is also on site. For more information please contact the Carbon Heritage Quilters - Mary at (403) 572-3815 or [quakwood@telusplanet.net](mailto:quakwood@telusplanet.net).
- Carbon Community Garage Sale Held the second Saturday in June, in conjunction with Carbon Lions Sports Day. Register your yard sale at no cost by calling the Village Office at (403) 572-3244. Kick-off the morning with breakfast at the Community Centre.
- Carbon High School Graduation  
Held Saturday evening of the Victoria Day Weekend each year. Carbon School web site.
- Carbon Lions Sports Day  
Held the second weekend of June. Activities include a community breakfast, garage sales, parade, driving range contest, slow pitch and soccer tournament, supper, and a dance.
- Carbon Lions Oktoberfest  
This event is held on the third Saturday of October each year.
- Carbon Community Centre's Beef Supper  
This event is held in April each year. Join us for fashions and entertainment.
- Carbon Lions New Year's Eve Dance  
Held at the Community Centre.
- Carbon Ladies Night Out  
This event sponsored by Carbon School is held the last Saturday in November each year. Join us for fashions and entertainment.

## TOURIST ATTRACTIONS

For a list of unique cultural and tourist attractions, visit the following sites:

- [Canadian Badlands](#) - Carbon is part of the [Travel Alberta](#) tourism region known as the Canadian Badlands. For information about the Badlands' Roots in Pre-History, Human Heritage, Parks, Green Spaces, & Fun visit site. For information about Things to See and Do, Places to Stay, Services, Communities (including Carbon), Where are We, Road Conditions, and Weather, [click here](#).
- [Carbon Municipal Campgrounds](#) - Open May through September 30. Carbon Main Campground has 19 power, water, and sewer sites, and 3 power/water sites. Carbon East has 17 power/water sites. A shower house and sewage disposal is located at both the Main and East Campground, and all users may use these services. Reservations recommended at (403) 572-3244. [Click here](#) to see the Carbon listings on [Explore Alberta](#).
- [Royal Tyrrell Museum](#) - Begin your journey through geological time. With every step, you'll experience the evolution of life. From sea dwellers to the Tyrrell's BIG attraction, the dinosaurs; to the rise of those furry little mammals and many of Earth's inhabitants in between. It's all here. Dozens of skeletons and hundreds of fossils that tell the story of ancient Alberta. Open Victoria Day Weekend to Labour Day Weekend 9am to 9pm daily. Open remainder of year 10am to 5pm Tuesday to Sunday. Call 1-888-440-4240.
- [That's Crafty Craft Barn and Tea House](#) - Ever consider shopping in a barn? See the talent of local artisans at Rosebud's That's Crafty. Open March to Christmas.
- [Rosebud Country Inn](#) – a striking bed and breakfast set in the Rosebud river valley
- [North Bow Lodge](#) – a beautiful lodge set 50 feet from some of the best trout fishing in North America.
- [Rosebud Dinner Theatre](#) – set in the picturesque valley on the edge of the Canadian badlands. Over 20,000 visitors a year enjoy the dynamic theatre and home cooked meals.
- [St. Ann Ranch](#) – an attractive 30 room mansion situated on 20 acres that has been declared a provincial historic site.
- [Bar B Guest House](#) – visitors enjoy the quiet country setting on a working farm.
- [Sproule Heritage Place](#) – this elegant bed and breakfast, now a provincially designated historic site, gained notoriety when it was featured in a Christmas Hallmark card commercial.
- [Coyote Crossing Cottage](#) - this handcrafted log home sleeps up to six people and is located on a family owned ranch just minutes off of the Trans-Canada highway near Strathmore.
- [T L Bar Ranch](#) - nestled in the "valley of the dinosaurs". Horseback riding is the main activity, daily checking the cattle and fences. Canoeing and fishing opportunities. Close proximity (65 km/40 miles) to the Tyrrell Museum.
- [Buffalo Jump Canyon Ranch](#) – exclusive outfitters to Dry Island Buffalo Jump, the ranch provides breathtaking scenery ranging from peaceful forest to rugged badlands.
- [Passion Play](#) – set in the spectacular badlands, the play has been described as "life changing", "moving" and "world class". Held each summer in July.

## ACCOMMODATIONS

- Carbon Valley Hotel
- Carbon Main & East Campground

## RESTAURANTS

- Good N' Plenty
- Royal City
- Louie's Take-out

# Economic Base

## ECONOMIC STRENGTHS

### Agriculture

An abundance of productive farmland, clean air and water make Carbon an attractive place to live and operate a business. The economic base in the Wild Rose area consists of agriculture (wheat, barley, oats, potatoes, canola, rye, flax, hay, beef and dairy cattle, poultry and hogs), agribusiness (feed and fertilizer production), greenhouses, oil and gas, and construction.

The following tables outline the magnitude of agricultural products in the region:

HAY AND FIELD CROPS BY ACRES		LIVESTOCK AND POULTRY	
Alfalfa and Alfalfa mixtures	70,821	Cattle	301,051
Barley	375,907	Pigs	254,250
Canola	133,327	Sheep/Lambs	10,571
Dry Field Peas	48,559	Chicken (by class)	9,711,993
Mixed Grains	11,138	(by lbs.)	21,111,378
Oats	11,838	Turkey (by class)	1,001,160
Lame Hay and Forage	51,703	(by lbs.)	2,307,193
Wheat	663,730		

Source: Agricultural Census 2001

The Village of Carbon, with a population of 530, serves an agricultural and ranching community. The Drumheller Institution, ATCO Gas, Bertram Drilling Ltd., and Highway 21 Feeders Ltd. are major employers



**BUSINESS DIRECTORY**

- |                    |                     |               |                       |
|--------------------|---------------------|---------------|-----------------------|
| Auto Body          | Woodworking         | Trucking      | Service Station       |
| Drilling Company   | Restaurant/Catering | Bottle Depot  | Laundromat            |
| Financial Services | Plumbing & Heating  | Lawyer        | Beauty Shop           |
| Electrician        | Hotel               | Insurance     | Full Banking Services |
| Wellness Centre    | Alternative Health  | Grocery Store | General Contractor    |

**FINANCIAL INSTITUTIONS**

- Mountain View Credit Union
- Alberta Treasury Branch Agency

**Economic Facts**

**OCCUPANCY/SUPPLY**

Residential lots available on the "island" with several backing onto Kneehills Creek. Lots starting at \$15, 299. Zoned single family dwellings (no single wides). Also carry a two-year building commitment.

A new residential development is being planned for the east side of the village.

For information on lots please contact Village Office. Telephone: (403) 572-3244

### **WORKERS COMPENSATION**

Average cost per \$100 payroll in Manufacturing: \$3-\$4

Average cost per \$100 payroll in Office Work: \$.40

Maximum weekly benefit \$1,176.92

For additional details on the program see: [Workers Compensation Board](#)

### **EMPLOYMENT INSURANCE**

55% of your average insurable earnings to a maximum of \$413 per week.

For additional information on the program see: [Employment Insurance Information for employers](#)

### **RESEARCH BASE**

Being a close neighbor of the City of Calgary, companies located in Carbon have access to a broad range of research facilities located in an around the City. For additional information on the following research facilities, simply click on the name to access the link.

- [Alberta Research Council](#)
- [Calgary Technologies Inc.](#)
- [Edmonton Economic Development Corporation](#)
- [Food Processing Development Centre](#)
- [TRLabs](#)
- [WurcNet](#)

### **FURTHER IN-DEPTH INFORMAITON**

- [Municipal Profiles](#) developed by [Alberta's Ministry of Municipal Affairs](#)
- [Alberta - A Wealth of Opportunity](#) developed by [Alberta Economic Development](#)
- [Alberta Economic Highlights](#) developed by [Alberta Economic Development](#)
- [Alberta Economic Outlook](#) developed by [Alberta Economic Development](#)
- [Alberta Export and Trade](#) developed by [Alberta Economic Development](#)
- [Tourism Reports](#) developed by [Alberta Economic Development](#)
- [Alberta Finance Statistics](#) also contains much information which may be useful.

## **Education**

Carbon is part of the [Golden Hills School Division #75](#) headquartered in Strathmore (Tel: 403-934-5121).

### **Carbon School**



**Carbon School** provides education for **Grades K to 12**. Elementary and junior high school special education programs are available.

**Daycare/Nursery**

Local daycare/nursery facilities are available.

# Emergency Services

**FIRE PROTECTION**

Carbon is served by a local volunteer fire department (Tel: 911).

**POLICE SERVICES**

Emergency: 911  
Non-Emergency Dispatch 24 Hrs: (403) 823-2630  
Big Country Victim Services: (403) 823-4233  
Carbon is served by the Drumheller detachment <http://www.mininova.org/>

mininovahment of the Royal Canadian Mounted Police [RCMP] (Tel: 911).

**AMBULANCE SERVICES**

Local ambulance service is available (Tel: 911).  
Kneehill Ambulance Society

**HOSPITAL**

Emergency: 911  
Non-Emergency: (403) 823-6500 (Drumheller)  
Non-Emergency: (403) 443-2444 (Three Hills)

**POISON CENTER**

Call: 1-800-332-1414

# Health Care

Carbon belongs to the **David Thompson Regional Health Authority**.



Hospital and medical services are available in Three Hills and Drumheller, where there are hospitals, several doctors, a health unit, dental clinic, optometrist and chiropractor as well as counselling services.



The Village's ambulance service from Three Hills and Linden, coupled with the STARS air ambulance, is ready for any emergency.

Carbon Wellness Centre Offers:

- Chiropractic
- Foot Care
- Well Baby Clinic
- Massage Therapy

## Key Contacts for Business Development

### MUNICIPAL

Village of Carbon  
Box 249  
Carbon, Alberta, T0M 0L0  
Telephone: 403-572-3244  
Facsimile: 403-572-3778  
Email: [admincarbon@wildroseinternet.ca](mailto:admincarbon@wildroseinternet.ca)

**Mayor** - Shirley D. Buyer

**Municipal Administrator** - Debra Grosfield

### PROVINCIAL

Alberta Economic Development  
2nd Floor, Provincial Building  
4920 - 51 Street  
Red Deer, Alberta, T4N 6K8  
Tel: 403-340-5300  
Fax: 403-340-5231  
Andre Tremblay, Regional Manager  
Email: [andre.tremblay@gov.ab.ca](mailto:andre.tremblay@gov.ab.ca)  
Dawna Allard, Regional Development Officer  
Email: [dawna.allard@gov.ab.ca](mailto:dawna.allard@gov.ab.ca)  
Lisa Houle, Regional Project Officer  
Email: [lisa.houle@gov.ab.ca](mailto:lisa.houle@gov.ab.ca)

Hon. Shirley McClellan  
Minister of Agriculture, Food, and Rural Development  
Member of the Legislative Assembly [MLA]  
Drumheller-Stettler Constituency  
#224 Legislature Building  
10800 - 97 Avenue  
Edmonton, Alberta, T5K 2B6  
Tel: 780-427-8809

Fax: 780-428-1341

## FEDERAL

Kevin Sorenson Member of Parliament [MP]  
Crowfoot Constituency  
House of Commons  
Ottawa, Ontario, K1A 0A6  
Tel: 613-947-4608  
Fax: 613-947-4611

### Constituency Office:

Box 308  
Killam, Alberta, T0B 2L0  
Tel: 780-385-7080  
Fax: 780-385-7083

## Location

Located in the Big Country Tourist Zone, 41 km west of Drumheller and 120 km northeast of Calgary.

Connecting highways include Highway 21, leading north to Trochu and south to the Trans Canada Highway No. 1, and Secondary Highway 575, leading west to Acme and east to Drumheller. Secondary Road 836 runs through Carbon, leading to Highway 9 east to Drumheller, and southwest to Highway 1.

### LONGITUDE & LATITUDE

Latitude: 51 degrees 18'N  
Longitude: 112 degrees 57'W



[Map of Alberta.](#)



[Map of Carbon's Location.](#)

### PROXIMITY TO OTHER LOCATIONS

Driving Distance from Carbon	km	miles	Time Required
Calgary (city centre)	117	73	1 hour, 23 minutes
Calgary International Airport	94	58	1 hour, 12 minutes
Edmonton, Alberta	301	187	3 hours, 20 minutes
Vancouver, British Columbia	1084	674	12 hours, 34 minutes
Toronto, Ontario	3401	2113	35 hours, 12 minutes
United States Border (Coutts, Alberta crossing)	371	231	4 hours, 17 minutes

It is important to note that time required is calculated based on 'ideal' traffic and weather conditions.

**\*\*Distance is measured from city centre to city centre\*\***

# Post Secondary Education

## EDUCATIONAL OPPORTUNITIES

Adult continuing education and upgrading programs are available from the **Big Country Educational Consortium** in Drumheller. Carbon residents also have access to post-secondary education facilities in the nearby cities of Olds, Red Deer and Calgary.

Carbon is part of the Wild Rose Region. With internationally recognized post secondary institutions, the Wild Rose Region is attracting students from around the world.



For information on **Educational Opportunities** in close proximity to Carbon visit the corresponding websites:

### University of Calgary

Tel: 403-220-5110

[www.ucalgary.ca](http://www.ucalgary.ca)

- **Southern Alberta Institute of Technology**

Tel: 403-284-7248

[www.sait.ab.ca](http://www.sait.ab.ca)

- **Mount Royal**

Tel: 403-240-6111

[www.mountroyal.ab.ca](http://www.mountroyal.ab.ca)

- **Alberta College of Art and Design**

Tel: 403-284-7600

[www.acad.ab.ca](http://www.acad.ab.ca)

- **Devry Canada**

Tel: 403-235-3450 [www.devry.ca](http://www.devry.ca)

- **Olds Agricultural College**

Tel: 1-800-661-6537 or 403- 556-8281

[www.oldscollege.ab.ca/](http://www.oldscollege.ab.ca/)

- **Red Deer Junior College**

Tel: 403- 342-3300

[www.rdc.ab.ca/](http://www.rdc.ab.ca/)

## Distant Learning

- **Athabasca University**

Tel: 403-263-6465

[www.athabascau.ca](http://www.athabascau.ca)

**OTHER EDUCATIONAL OPPORTUNITIES** within close proximity are:

**Prairie Bible Institute** offers a wide range of programs, including ministry, aviation, drama, wilderness leadership and music, to students from over 20 countries around the world. Students can earn a one-year certificate or a four-year degree.

**Covenant Bible College** is an eight-month program of Christian discipleship. The Strathmore campus is one of three campuses, with the other two located in Colorado and Ecuador.

**Rosebud School** of the Arts offers a unique blend of practical and theoretical training in the performing arts. In addition to the arts program, Rosebud provides apprenticeship programs in the hospitality industry.

# Taxation

	<u>Residential/Farmland</u>	<u>Non-Residential</u>
<b>2005</b>		
Municipal Tax Rate	15.800	20.6000
Education - Alberta School Foundation Fund Tax Rate	4.4100	6.9000
Seniors Lodge Accommodation Tax Rate	.0130	.0130

Mill Rate	1999	2004
Residential	----	20.773
Commercial	----	28.193

# Transportation

## AIR SERVICES

The nearest airport is at Three Hills, 25 km north of Carbon and Beiseker, 20 km west of Carbon.

The nearest commercial and air freight services are at **Calgary International Airport**.

94 km drive from Carbon.

For a listing of non-stop passenger destinations visit **Passenger Non-stop Destinations**.



## HIGHWAYS

Located in the Big Country Tourist Zone, 41 km west of Drumheller and 120 km northeast of Calgary.

Connecting highways include Highway 21, leading north to Trochu and south to the Trans Canada Highway No. 1, and Secondary Highway 575, leading west to Acme and east to Drumheller. Secondary Road 836 runs through Carbon, leading to Highway 9 east to Drumheller, and southwest to Highway 1.

For manufacturers and producers who need assistance to determine the most cost-effective and efficient transportation method, AlbertaPORT provides a "virtual" gateway to assist with transportation logistics at [www.alberta-canada.com/altaport/](http://www.alberta-canada.com/altaport/).



## BUS SERVICE

Regularly scheduled bus service is provided to Carbon by **Greyhound Canada** 1-800-661-8747.



## POSTAL & COURIERS

Canada Post, Purolator, UPS and FedEx all provide delivery services To Chestermere. Canada Post fills a vital need in the region providing cost-effective and timely mail delivery. In



its mission to provide innovative physical and electronic delivery solutions creating value for its customers, Canada Post works with its business customers to ensure their mail communication needs are achieved.

In 2001, Canada Post received an on-time, combined service performance score of 96.4% on properly prepared letter mail.

For more information on service in Carbon contact: [Canada Post](#), [Purolator](#), [UPS](#) & [FedEx](#).

## Utilities

**ELECTRICITY** and **NATURAL GAS** are deregulated in Alberta.

The Alberta government provides a Web site to provide information to assist consumers to choose the appropriate provider for their residence or business. To learn more about electrical or natural gas providers visit [Customer Choice](#)

### Electrical Power:

[FortisAlberta](#)

### Natural Gas:

[Direct Energy Services](#)



## COMMUNICATIONS



### Cable Television:

[Persona](#)

### Telephone:

[Telus Communications](#)

### Internet Service:

[Wildrose Internet Services](#)

### Internet Service:

[eFirehose](#)

## LOCAL/REGIONAL NEWSPAPERS:

- [The Three Hills Capital](#)
- [The Drumheller Mail](#)
- [The Calgary Herald](#)
- [The Calgary Sun](#)

## WATER SUPPLY

The Kneehill Regional Water Line competed in September 2005, originates in Drumheller and servicing the communities of Carbon, Acme, Beiseker, Irricana and Linden. Alberta's commitment to water resources is three-fold: a safe, secure drinking water supply, healthy aquatic ecosystems, and reliable, quality water supplies for a sustainable economy. [Alberta Environment](#) has developed water programs that include studying, monitoring and testing of water sources. They have established guidelines to ensure quality standards for the many uses of water, and programs to protect ecosystems and enforce regulations.



Alberta has the most stringent drinking water program in the country and was one of the first provinces to fully adopt the [Canadian Guidelines for Drinking Water Quality](#) as a minimum standard. Alberta Environment strives for continuous improvement in its program and works closely with [Alberta Health and Wellness](#) to ensure Albertans continue to enjoy high-quality drinking water.

#### **WASTE MANAGEMENT**

Sewage treatment is provided by a lagoon consisting of 2 short and 3 long detention ponds.

Industrial, commercial and residential garbage is collected weekly.

For information on Alberta regulations for water and waste water please visit [Alberta Environment](#)

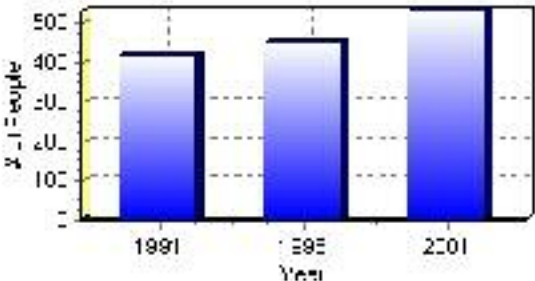
# Population

## Total Population

Population 2004*	530
Population 2003*	530
Population 2002*	530
Population 2001**	530
Population 2000*	501
Population 1996**	450
Population 1991**	416
Population % change 1991-1996	7.56%
Population % change 1996-2001	15.09%

\* Source: Official Population List, Alberta Municipal Affairs  
\*\* Source: Statistics Canada 1991, 1996, & 2001 Census

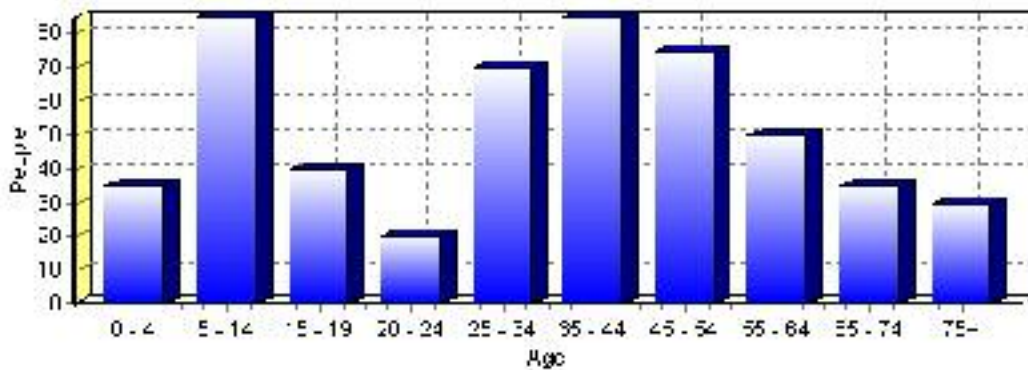
## Total Population 1991-2001



Population by Age and Gender	1996 Male	1996 Female	1996 Total	2001 Male	2001 Female	2001 Total
Age 0 - 4	15	15	30	20	15	35
Age 5 - 14	30	35	65	35	50	85
Age 15 - 19	25	15	40	20	20	40
Age 20 - 24	10	20	30	10	10	20
Age 25 - 34	30	20	50	40	30	70
Age 35 - 44	40	40	80	45	40	85
Age 45 - 54	20	25	45	35	40	75
Age 55 - 64	10	15	25	25	25	50
Age 65 - 74	25	30	55	15	20	35
Age 75 and older	15	15	30	15	15	30
Total All Persons	220	230	450	270	260	530

Source: Statistics Canada 1996 & 2001 Census (numbers may not add up due to rounding)

### Carbon Population by Age Group (2001)



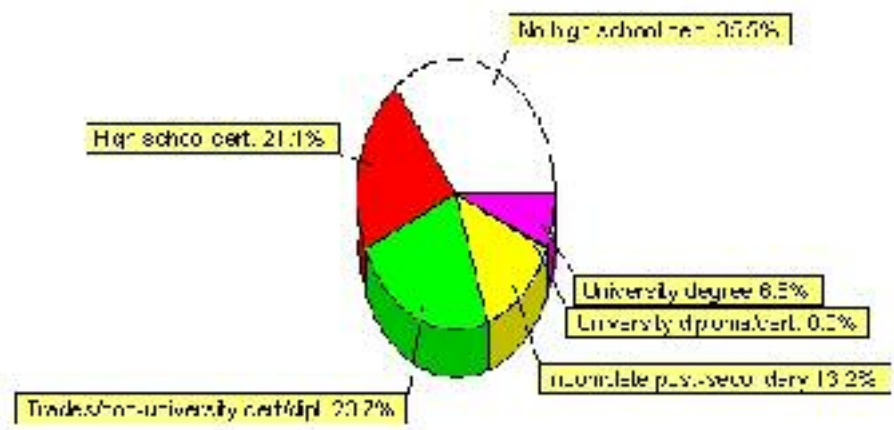


# Education Statistics

Highest level of schooling for Population 20yrs and older	2001	%
People without high school certificates	135	35.53%
People with high school certificates	80	21.05%
People with trades or non-university certificate or diploma	90	23.68%
People with post-secondary education (not completed)	50	13.16%
People with university diploma/certificate	0	0.00%
People with university degree	25	6.58%
Total Population 20 years and older	380	100.00%

Source: Statistics Canada 2001 Census (numbers may not add up due to rounding)

## Carbon Highest Level of Schooling 2001



Population with Post Secondary Qualifications	1996	%	2001	%
Agriculture and biological sciences	10	8.00%	10	8.70%
Commerce, management and business administration	30	24.00%	30	26.09%
Educational, recreational and counseling services	10	8.00%	10	8.70%
Engineering and applied science tech. and trades	60	48.00%	55	47.83%
Engineering and applied sciences	0	0.00%	0	0.00%
Fine and applied arts	0	0.00%	0	0.00%
Health professionals, science and technologies	0	0.00%	15	13.04%
Humanities and related fields	10	8.00%	0	0.00%
Mathematics and physical sciences	0	0.00%	0	0.00%
Social sciences and related fields	10	8.00%	0	0.00%
Other and/or no specialization	0	0.00%	0	0.00%
Total people with post secondary qualifications	125	100.00%	115	100.00%
Females with post-secondary qualifications	50	40.00%	50	43.48%
Males with post-secondary qualifications	75	60.00%	65	56.52%

Source: Statistics Canada 1996 & 2001 Census (numbers may not add up due to rounding)

## Labour Force

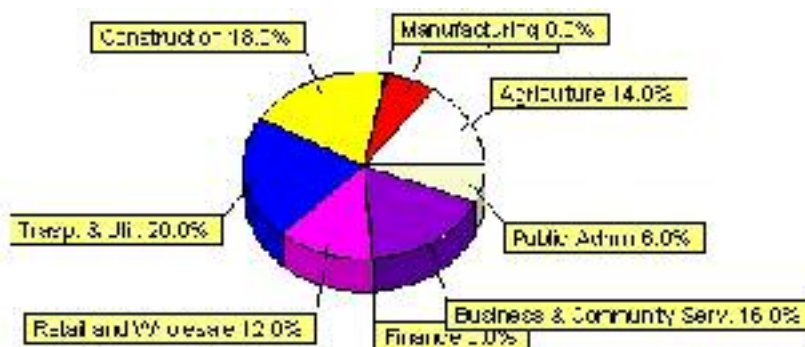
Labour force by activity	1996	2001
In the labour force, both sexes	230	250
Not in the labour force, both sexes	140	150
Total population 15 and over	375	400
Employed, both sexes	225	230
Unemployed, both sexes	0	15
Participation rate, both sexes	61.00%	63.00%
Unemployment rate, both sexes	0.00%	6.00%

Source: Statistics Canada 1996 & 2001 Census (numbers may not add up due to rounding)

Labour Force by Industry Division	1996	% of total	2001	% of total
Agriculture	35	15.22%	35	14.00%
Mining	10	4.35%	15	6.00%
Manufacturing	20	8.70%	0	0.00%
Construction	15	6.52%	45	18.00%
Transportation. & Utilities	20	8.70%	50	20.00%
Retail and Wholesale	20	8.70%	30	12.00%
Finance	0	0.00%	0	0.00%
Business & Community Services	85	36.96%	40	16.00%
Public Administration	10	4.35%	15	6.00%
Total All Industries	230	100.00%	250	100.00%

Source: Statistics Canada 1996 & 2001 Census (numbers may not add up due to rounding)

### Carbon Labour Force By Industry - 2001



Labour Force by Major Occupational Groups	1996	%	2001	%
Management occupations	15	6.38%	10	4.00%
Business, Finances and administrative occupations	30	12.77%	35	14.00%
Natural and applied sciences and related occupations	0	0.00%	10	4.00%
Health occupations	10	4.26%	10	4.00%
Occupations in social science; education; government and religion	10	4.26%	15	6.00%
Occupations in art; culture; recreation and sport	10	4.26%	0	0.00%

Sales and service occupations	60	25.53%	65	26.00%
Trades; transport; equipment operators and related occupations	35	14.89%	75	30.00%
Occupations unique to primary industry	55	23.40%	25	10.00%
Occupations unique to processing; manufacturing and utilities	10	4.26%	20	8.00%
Occupations not elsewhere classified	0	0.00%	0	0.00%
Total - All Occupations (major groups)	235	100.00%	250	100.00%
Females - All Occupations	105	44.68%	95	38.00%
Males - All Occupations	130	55.32%	155	62.00%

Source: Statistics Canada 1996 & 2001 Census (numbers may not add up due to rounding)

---

## Income

<b>Family Income (Number of Families)</b>	<b>1996</b>	<b>%</b>	<b>2001</b>	<b>%</b>
less than \$19,999	0	0.00%	10	8.33%
\$20,000 - \$39,999	35	29.17%	75	62.50%
\$40,000 - \$59,999	50	41.67%	20	16.67%
\$60,000 and over	35	29.17%	0	0.00%
Total number of families	120	100.00%	105	87.50%
Average family income	\$52,519		\$43,055	
Median family income	\$48,313		\$33,211	

Source: Statistics Canada 1996 & 2001 Census (numbers may not add up due to rounding)

<b>Household Income (Number of Households)</b>	<b>1996</b>	<b>%</b>	<b>2001</b>	<b>%</b>
less than \$19,999	40	22.22%	45	21.43%
\$20,000 - \$39,999	65	36.11%	105	50.00%
\$40,000 - \$59,999	50	27.78%	10	4.76%
\$60,000 and over	0	0.00%	40	19.05%
Total number of households	180	100.00%	210	100.00%
Average household income	\$42,976		\$41,473	
Median household income	\$32,995		\$31,004	

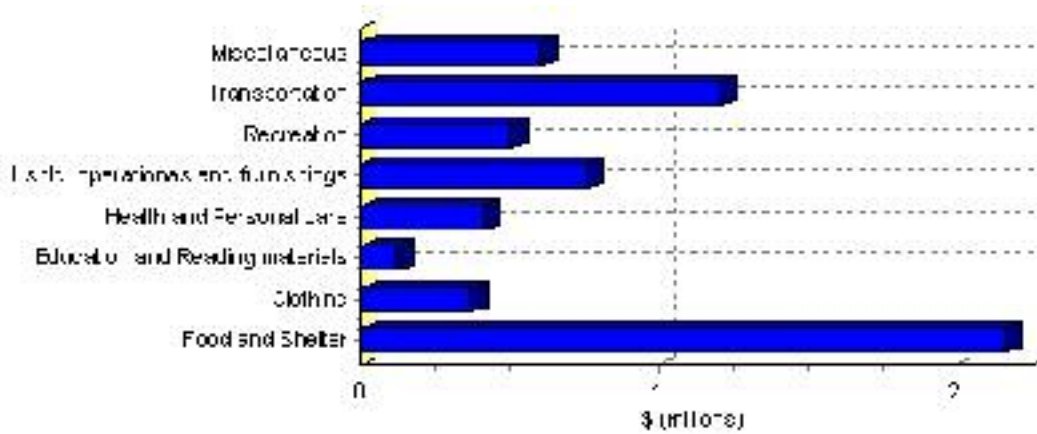
Source: Statistics Canada 1996 & 2001 Census (numbers may not add up due to rounding)

# Family Expenditure

Expenditure Category	1992	% of total	1996	% of total
Food and Shelter	\$1,520,845	38.66%	\$2,166,257	35.23%
Clothing	\$246,405	6.26%	\$370,748	6.03%
Education and Reading materials	\$63,970	1.63%	\$119,142	1.94%
Health and Personal care	\$254,395	6.47%	\$409,994	6.67%
Hshld. operations and furnishings	\$424,695	10.80%	\$761,524	12.38%
Recreation	\$267,190	6.79%	\$501,724	8.16%
Transportation	\$818,310	20.80%	\$1,212,453	19.72%
Miscellaneous	\$335,760	8.53%	\$607,635	9.88%
Total Current Consumption	\$3,934,005	100.00%	\$6,149,477	100.00%
Total # of Households	170		181	
Average Consumption per Household	\$23,141		\$33,975	

Source: Statistics Canada Family Expenditure Survey 1992 & 1996 (numbers may not add up due to rounding).

## Carbon Family Expenditures (1996)



## Dwellings

<b>Occupied Private Dwellings by Type</b>	<b>1996</b>	<b>% of total</b>	<b>2001</b>	<b>% of total</b>
Apartments	20	11.11%	10	4.76%
Detached Duplexes	0	0.00%	5	2.38%
Movable Dwellings	0	0.00%	25	11.90%
Other single attached house	0	0.00%	0	0.00%
Row and semi-detached house	10	5.56%	15	7.14%
Single-detached house	155	86.11%	160	76.19%
Total number of occupied private dwellings	180	100.00%	210	100.00%
Private dwellings, owned	140	77.78%	165	78.57%
Private Dwellings, rented	40	22.22%	40	19.05%

Source: Statistics Canada 1996 & 2001 Census (numbers may not add up due to rounding)

<b>Private Dwellings by Period of Construction</b>	<b># of Dwellings</b>	<b>% of total</b>
Period of construction, before 1946	50	23.26%
Period of construction, 1946 - 1960	45	20.93%
Period of construction, 1961 - 1970	25	11.63%
Period of construction, 1971 - 1980	40	18.60%
Period of construction, 1981 - 1990	25	11.63%
Period of construction, 1991 - 2001	30	13.95%
Total number of private dwellings constructed	215	100.00%

Source: Statistics Canada 2001 Census (numbers may not add up due to rounding)

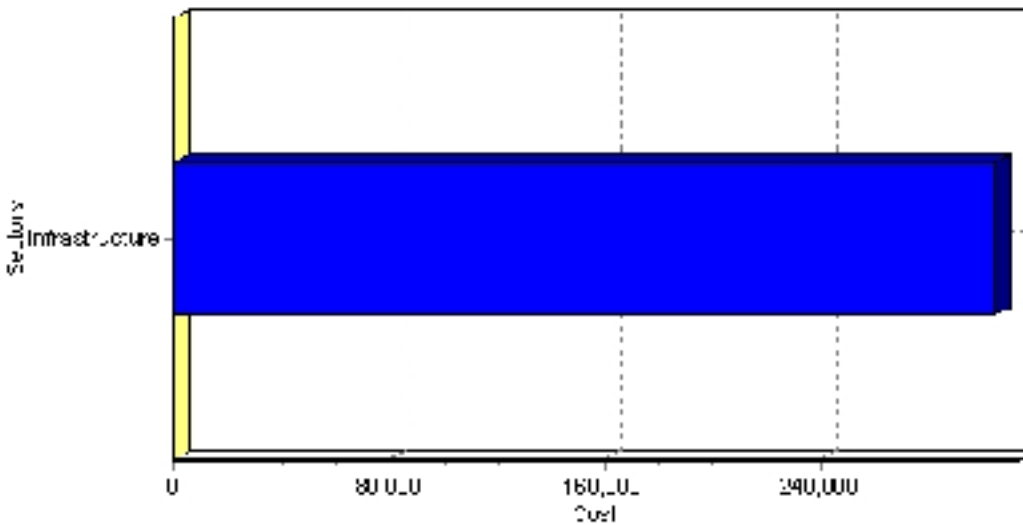
# Projects

## Summary of Projects in Carbon as of September 2006

Project Sector	Number of Projects	Project Cost
Infrastructure	2	\$305,000
Total	2	\$305,000

This inventory lists projects in Alberta that have recently been completed, are under construction, or are proposed to start construction. Not all projects are listed due to reasons of confidentiality and/or due to information not being available at the time of printing. Project data is obtained from public information sources, where possible, this data has been verified with the project proponent/developer, users of the Inventory may wish to confirm project data with the proponent/developer. The inventory does not breakdown project expenditures by any given year. The cost of a project is the value of expenditures expected over all phases of project construction, which may span over two or more years. Cost of projects listed in the Inventory are estimated values only. Source: Alberta Economic Development, 2004.

## Value of Projects by Sector (as of September 2006)



Project Status	Number of Projects	Project Cost
Proposed	1	\$104,000
Under Construction	1	\$201,000
Total	2	\$305,000

This inventory lists projects in Alberta that have recently been completed, are under construction, or are proposed to start construction. Not all projects are listed due to reasons of confidentiality and/or due to information not being available at the time of printing. Project data is obtained from public information sources, where possible, this data has been verified with the project proponent/developer, users of the Inventory may wish to confirm project data with the proponent/developer. The inventory does not breakdown project expenditures by any given year. The cost of a project is the value of expenditures expected over all phases of project construction, which may span over two or more years. Cost of projects listed in the Inventory are estimated values only. Source: Alberta Economic Development, 2004.

## Largest Projects in Carbon as of September 2006

Company Name	Project Description	Project Location	Project Cost	Construction Schedule	Status
Village of Carbon	Water & Wastewater Services	Carbon	\$201,000	2006-2006	Under Construction
Village of Carbon	Water Distribution Upgrades	Carbon	\$104,000	-	Proposed

Disclaimer: Information in this profile has been provided from a variety of external sources. Although every effort has been made to ensure the accuracy, currency and reliability of the content and data, AlbertaFirst.com Ltd. accepts no responsibility in this regard.

© AlbertaFirst.com Ltd., 2006.