

Minburn No. 27, County of

Welcome

WELCOME TO THE COUNTY OF MINBURN NO. 27



Area Overview

The County of Minburn is situated in the parkland area east of Edmonton. It straddles the [Yellowhead Trans Canada Highway 16](#) and is headquartered in Vegreville. Consisting of 37 townships, the main centres of activity being Vegreville, Mannville, Innisfree, Lavoy and Minburn, it spans an area of approximately 55 miles east to west, and 30 miles north to south.

The County offers residents a relaxed, yet vibrant, lifestyle as a result of both urban and rural influences. Two major centres-- Vegreville in the west and Mannville in the east--and the smaller communities spread throughout the County ensure an excellent availability of supplies and services. Towns and villages are of a manageable size, with well-established education, cultural and social services. There is also affordable housing in a variety of price ranges.

The County of Minburn is THE place to establish a new business or expand an existing business. There are fully-serviced industrial parks and prime downtown office space. **Transportation** is never a problem, since the County is a natural centre for road, railway and air traffic. It is situated one hour from either Edmonton or the Saskatchewan border.

There are various **tourist attractions** throughout the County. The most notable is the "Pysanka", the world's largest Ukrainian easter egg, which is located in [Vegreville](#). The County is also a tourist destination, given its proximity to the Yellowhead Trans Canada Highway. Part of the [Kalyna Country Tourism Zone](#), the County has some of the **finest recreational opportunities** in Alberta. The County prides itself with fine recreational opportunities, including Wapasu Lake Conservancy Project and the International Rotary Peace Park. In addition, the County of Minburn's excellent leisure facilities attract major sports tournaments. The facilities encourage family participation and allow for year-round recreation programs. In addition to organized recreation, the County offers a diverse outdoor experience at its campgrounds, picnic sites and parks. Hunting and fishing attract both residents and visitors.

The Yellowhead Trans Canada Highway and the network of high-quality regional roads ensure all residents easy access to the County's two hospitals. The County is also covered by two **health units**: East Central Health (Vegreville) and Community Health (Minburn-Vermilion).

Along with staff at the main County office in Vegreville, public service employees are also located in Lavoy, Innisfree and Mannville. Seven elected divisional Councillors direct the provision of municipal services. The County has put an emphasis on developing an infrastructure that is poised for future growth and dedicated to providing services to all its citizens.

County residents are an energetic group dedicated to the improvement of life in their communities. They take a keen interest in politics at all levels.



The County of Minburn No. 27 moved into its Administrative Complex in 1991. This building--acquired from the provincial government [old courthouse] and renovated--preserves the historic link to the past.

Community Services

MUNICIPAL

County of Minburn No. 27
4909 - 50 Street, Box 550
Vegreville, Alberta
T9C 1R6
Tel: 780-632-2082
Fax: 780-632-6296
Email: info@minburncounty.ab.ca

Along with staff at the main County office in Vegreville, public service employees are also located in Lavoy, Innisfree and Mannville. Seven elected divisional Councillors direct the provision of municipal services.

PROVINCIAL

A number of provincial departments have offices in the County, including Medical Examiner-Coroner, Mental Health, Fish and Wildlife, and the Provincial Court.

FEDERAL

- Case Processing Centre
- Prairie Farm Rehabilitation Act (PFRA)

- Canada Post
 - Royal Canadian Mounted Police (RCMP)
-

Community Lifestyle

The County of Minburn is noted for its tremendous range of **multicultural activities**.

RECREATION

The County offers residents a relaxed, yet vibrant, lifestyle as a result of both urban and rural influences. Two major centres -- Vegreville in the west and Mannville in the east -- and the smaller communities spread throughout the County ensure an excellent availability of supplies and services.

Services are geared to **all age groups**, including day care for young children, clubs for boys and girls, continuing education for adults and a network of drop-in centres for seniors.

In addition, the County of Minburn's excellent leisure facilities attract major **sports tournaments**. The facilities encourage family participation and allow for year-round recreation programs. In addition to organized recreation, the County offers a diverse outdoor experience at its campgrounds, picnic sites and parks. Hunting and fishing attract both residents and visitors.

The County is part of the **Kalyna Country Tourism Zone**. Visitors will find a wide range of recreational opportunities in the area.

COMMUNITY ORGANIZATIONS

Service clubs, agricultural societies and 25 community halls are centres of activity.

Arts and cultural groups such as a community band, light theatre group and craft guilds have started up in recent years.

RELIGIOUS SERVICES

Churches also play an important role in the community life. Places of worship representing all faiths are located in the towns and rural areas.

The spiritual faith of all ethnic groups has been present since the pioneering days in the County, and is apparent in the people's willingness to lend neighbours a helping hand.

ACCOMMODATIONS

Overnight accommodation is available in Vegreville, Mannville and throughout the County.

Bed and Breakfasts

- The Beachside Bed and Breakfast on Wapasu Lake. For more information call (780) 592-3840 or visit www.thebeachside.ca.
- Marushka's Bed & Breakfast & Tea Room located in Lavoy. For more information call (780) 658-2503 or visit www.marushkasbb.com.
- Thistles & Lace Bed & Breakfast located south of Mannville. For more information call (780) 763-2241.

RESTAURANTS

Dining establishments are available in Vegreville, Mannville and throughout the County.

Economic Base

Agriculture has been the backbone of the County's economy since the turn of the century, when the first settlers were attracted to its rich black soil. These pioneers have made the district into one of the better farming areas in the West.

Of the County's 692,304 acres, 75% is cultivated land. There are over 900 farms, and 25% of the population is employed in agriculture and related activities.

Throughout the County, farmers have upgraded their facilities to improve production. County farmers have extensive knowledge of all aspects of their business and the complexities of modern farming. The farming community represents a skilled and hard-working labour force with expertise not only in farming, but also in areas such as assembly line work, welding and metal fabrication.

Wheat, canola, barley and oats are the major agricultural commodities. The County is noted for its consistently high production levels. Average Hard Red Spring Wheat production is 40 bushels per acre. The majority of grain is produced by large farms with over 1,000 or more acres.

Over the past few years, older elevators and **seed cleaning plants** have been modernized or replaced with expanded and highly-efficient facilities. The County's two seed cleaning plants process about 700,000 bushels per year.

Interest in **specialty crops**, especially peas, is growing. Fresh vegetables are available in farmers' markets throughout the County.

The County of Minburn is also a highly productive **livestock** area. The Minburn grazing reserve covers over 20 sections of land in the southeast portion of the County. Beef producers are mainly cow-calf operators. The availability of good land attracted three Hutterite colonies to the County, and they have prospered.

The County of Minburn's innovative and aggressive **business community** offers residents a wide range of employment opportunities, along with a complete selection of retail outlets and trade/professional services. About 35% of the population is employed in the industrial and commercial sector. Of particular note, the farming community is well supported by a variety of services in the towns and villages. All major lines of farm implements are available and a large farm implement manufacturer is located in the County.

Prospects for future **industrial growth** are encouraging. Land has already been designated for industrial use, and excellent water and sewage facilities are available throughout the County. A stable, productive labour force with a strong work ethic is one of the County's greatest assets.

County residents are also known for their **skills in advanced technology research and development**. There is a large pool of highly-trained technical personnel, as evidenced by the regional facilities of TransCanada Pipelines Ltd., ATCO Electric and ATCO Gas. Also, employees at the Alberta Research Council Inc. Centre and the Case Processing Centre have a broad range of expertise.

The **oil and gas industry** plays an important role in the local economy. Shallow low pressure gas lies underneath most of the County, and a large heavy oil field with over 400 wells is located in the southeast part of the County. TransCanada Pipelines Ltd. has its area office for East Central Alberta in the County.



Economic Facts

Area farmers have benefited from the presence of the [Alberta Research Council Inc.](#), which provides a number of diagnostic services.

As well, local office of [Prairie Farm Rehabilitation Administration \(PFRA\)](#) is located in the County. The PFRA works with producers and businesses to help them take advantage of **new opportunities and expanding markets**.

FINANCIAL INSTITUTIONS

Financial institutions such as the Bank of Montreal, TD Canada Trust, Canadian Imperial Bank of Commerce, Battle River Credit Union and the ATB Financial Branch have offices in the County.

Education

Public Schools are available throughout the County. The County is part of the:

- **Elk Island Public School Regional Division No. 14**, headquartered in Sherwood Park [Tel: 800-905-3477]
- **Elk Island Catholic Regional Division No. 41**, headquartered in Sherwood Park [Tel: 800-996-9982]
- **Buffalo Trail Regional School Division No. 28**, headquartered in Wainwright [Tel: 780-842-6144].

The education system in the County is excellent. Quality instructors, a varied curriculum with specialist programs, and modern facilities and teaching aids ensure that all students have access to a full and rewarding education.

Schools are run with the philosophy that education is a joint responsibility of the student, school and home. Parents play a vital role by participating as volunteers or by providing valued input into discussion on new programs.

The schools are used extensively by the [Vegmin Learning Network](#), local recreation boards and the community at large. Students also take advantage of community facilities such as curling rinks and swimming pools.

The **bus system** provides transportation throughout the County and also enables students to participate in field trips. Trips to other provinces and countries are often arranged, and exchange students are frequent visitors to area schools.

All schools in the County are committed to developing and maintaining challenging programs which meet the needs of every student. School programs stress excellence. County students consistently score higher grades than the provincial average. An extensive award system recognizes achievement in scholarship.

All schools offer **French** classes. The **Ukrainian** bilingual program is another language option.

Special education students are integrated into the school system. There is also a Challenge Program for gifted children. Libraries and computers enrich the learning atmosphere for all students.

In addition to the academic program, there is a full range of **vocational programs** including food preparation, beauty culture, automotives, electronics and business.

The County's comprehensive physical education and extra-curricular programs add another dimension to the learning experience. Students participate in a variety of activities including team sports, music clubs, talent festivals and science fairs.

DAYCARE / NURSERY

The County has a thriving Early Childhood Services (ECS) program which benefits from a high degree of parent support.

Emergency Services

FIRE PROTECTION

Fire protection consists of 10 units and 72 volunteer firefighters that serve the towns and rural areas. The County of Minburn does pay toward the costs of fire protection for all residents. The onus is on the individuals to obtain protection coverage through their respective fire associations.

POLICE SERVICES

Police services are provided by the Royal Canadian Mounted Police [RCMP], with detachments in Vegreville (western portion) and Vermilion (eastern portion).

AMBULANCE SERVICES

County Council has established a Municipal Disaster Services Agency to deal with matters relating to emergencies and disasters in the County. A Director and Committee have been appointed to be in charge of the agency.

All divisions back each other up as necessary, thus ensuring adequate protection for the entire County. Mutual Aid Agreements with surrounding jurisdictions provide additional access to protection services.

Health Care

First-rate medical services include in-patient and out-patient care, chronic care, occupational and physical therapy, and dental and eye care.

The Yellowhead Highway and the network of regional roads ensure all residents easy access to the County's **two hospitals**-- Mannville Municipal Hospital in Mannville, and St. Joseph's Hospital in Vegreville. Adjacent to St. Joseph's Hospital is the Vegreville Auxiliary Hospital and Nursing Home. The Minburn Foundation Homestead, a **senior citizen's lodge**, is located in Vegreville.

The County is served by two health units: Vegreville and Minburn-Vermilion.



Key Contacts for Business Development

MUNICIPAL

County of Minburn No. 27
4909 - 50 Street, Box 550
Vegreville, AB T9C 1R6
Tel: 780-632-2082
Fax: 780-632-6296

Email: info@minburncounty.ab.ca

COUNCIL

Reeve:

Orest J. Berezan, Division No. 6

Deputy Reeve:

Albert Melnyk, Division No. 3

Councillors:

Richard Wagner, Division No. 1

Eric Anderson, Division No. 2

Wilma Cherniawsky, Division No. 4

George Jamieson, Division No. 5

Ron Petruk, Division No. 7

County Manager:

[David Marynowich](#)

Director of Finance & Administration:

Susan Babyn

Superintendent of Public Works:

Graham Shell

Agricultural Fieldman:

Darwin Ullery

Development Officer:

Ryan Hall

Director of Protective Services/Fire Chief:

Ross Warren

Akasu Regional Economic Development Authority

Attention: Economic Development Office

Box 550

Vegreville, AB T9C 1R6

PROVINCIAL (Updated April 2005)

[Alberta Economic Development](#)

Box 412

Room 308, Provincial Building

5025 - 49 Avenue

St. Paul, AB T0A 3A4

Tel: 780-645-6358

Fax: 780-645-6241

[Garry Krause](#), Regional Manager

[Maryann Robinson](#), Client Service Representative

Ed Stelmach

Member of the Legislative Assembly (MLA)

Fort Saskatchewan - Vegreville Constituency

Constituency Office

Box 451, 4945 - 51 Avenue

Vegreville, AB T9C 1R6

Phone: 780-632-6840

Fax: 780-632-6888

fortsaskatchewan.vegreville@assembly.ab.ca

Legislature Office
607 Legislature Annex
9718-107 Street
Edmonton, AB T5K 1E4
Phone: 780-422-5384
Fax: 780-415-0951

Lloyd Snelgrove

Member of the Legislative Assembly (MLA)
Vermilion - Lloydminster Constituency

Constituency Office
5036 - 49 Avenue
Vermilion, AB T9X 1B7
Phone: 780-875-5792
Phone: 780-853-4202
Fax: 780-853-5770
Toll Free Number: 1-800-567-7644
Vermilion.Lloydminster@assembly.ab.ca

Legislature Office
#130, 10800 - 97 Avenue
Edmonton, AB T5K 2B6
Phone: 780-415-9425
Fax: 780-422-5385

FEDERAL (Updated June 2004)

Leon Benoit
Member of Parliament [MP]
Vegreville - Wainwright Constituency
House of Commons
Suite 613, Justice Building
Ottawa, ON K1A 0A6
Tel: 613-992-4171

Constituency Office:
Box 300
Mannville, AB T0B 2W0
Tel: 780-763-6130 or 1-800-463-1194
Fax: 780-763-6132

Location

The County of Minburn straddles the Yellowhead Trans Canada Highway 16. It spans an area of approximately 55 miles east to west (commencing east of Mannville, and ending west of Vegreville) and 30 miles north to south. The County of Minburn is headquartered in Vegreville.

Post Secondary Education

There are a number of opportunities for continuing education. [Portage College](#) offers an innovative and expanding curriculum in adult education, literacy tutoring and academic upgrading. Computer instruction and tele-conferencing with other educational

institutions are available at the College.

Vegmin Learning Network and other community groups also sponsor a variety of adult education courses.

Taxation

TAX RATES [2006]

- Residential - Public.....13.6703
- Residential - Separate.....13.6703
- Farmland.....17.0988
- Non-Residential - Public.....24.1515
- Non-Residential - Separate.....24.1515
- Linear.....24.1515
- Machinery/Equipment.....18.5809
- Lavoy Debenture.....1.9792 (this is in addition to above rates)

	Residential	Farmland	Non-Residential
2006			
Municipal Tax Rate	9.1281	12.5566	18.0318
Education - Alberta School Foundation Fund Tax Rate	4.3348	4.3348	5.5706
Education Opted Out Tax Rate	4.3348	4.3348	5.5706
Seniors Lodge Accommodation Tax Rate	.2074	.2074	.2074

	Residential	Farmland	Non-Residential
2005			
Municipal Tax Rate	9.6949	12.1234	17.3805
Education - Alberta School Foundation Fund Tax Rate	4.7458	4.7458	6.3506
Education Opted Out Tax Rate	4.7458	4.7458	6.3506
Seniors Lodge Accommodation Tax Rate	.2296	.2296	.2296

Transportation

AIR SERVICES

A top-notch municipal airport serves the County. An Airport Vicinity Protection Area assures continued development of the airport and allows for compatible industrial growth.

RAIL SERVICES

The County is served by Canadian National Railways. A major east-west line bisects the County. Sidings, spur trackage and point loading areas are available.

HIGHWAYS

The County is a receiving point for north-south and east-west highway traffic. The Yellowhead Trans Canada Highway runs through the County. The secondary road system, which as now become Province Government jurisdiction, is constantly being expanded and upgraded to meet the demands of heavier traffic.

TRUCKING FIRMS

Several local and regional trucking firms serve the County.

BUS SERVICES

Greyhound Bus Lines offers regularly scheduled inter-community service in the County. Various charter companies also serve the area.

COURIERS AND TAXIS

Courier services include Loomis and Purolator Couriers.

Utilities

ELECTRICITY AND NATURAL GAS

Direct Energy Regulated Services serves the Vegreville area. As well, there are 3 Rural Gas Co-ops serving the farming areas. For inquiries and services contact Direct Energy Regulated Services. Contact the County office for information on other areas.

TELEPHONE

Telephone services are provided by Telus.

Tel: 310-2255 Toll-free - Residential Customers

Tel: 310-3100 Toll-free - Business Customers

WATER SUPPLY

The source of water varies throughout the County. Contact the County office.

WASTE MANAGEMENT

Sewage treatment and garbage collection varies throughout the County. Contact the County office.

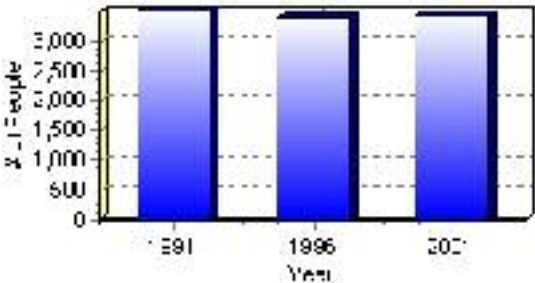
Population

Total Population

Population 2004*	3,436
Population 2003*	3,436
Population 2002*	3,436
Population 2001**	3,440
Population 2000*	3,524
Population 1996**	3,405
Population 1991**	3,490
Population % change 1991-1996	-2.50%
Population % change 1996-2001	0.90%

* Source: Official Population List, Alberta Municipal Affairs
** Source: Statistics Canada 1991, 1996, & 2001 Census

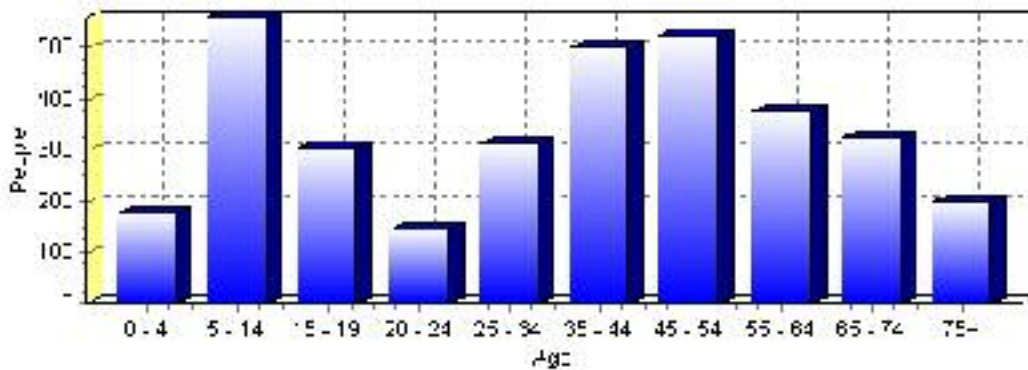
Total Population 1991-2001



Population by Age and Gender	1996 Male	1996 Female	1996 Total	2001 Male	2001 Female	2001 Total
Age 0 - 4	120	120	240	100	75	175
Age 5 - 14	325	270	595	305	255	560
Age 15 - 19	145	120	265	155	150	305
Age 20 - 24	85	60	145	75	70	145
Age 25 - 34	220	195	415	150	165	315
Age 35 - 44	275	255	530	270	230	500
Age 45 - 54	240	190	430	270	255	525
Age 55 - 64	180	170	350	200	175	375
Age 65 - 74	180	150	330	180	145	325
Age 75 and older	80	55	135	120	80	200
Total All Persons	1,835	1,570	3,405	1,825	1,610	3,435

Source: Statistics Canada 1996 & 2001 Census (numbers may not add up due to rounding)

Minburn No. 27, County of Population by Age Group (2001)

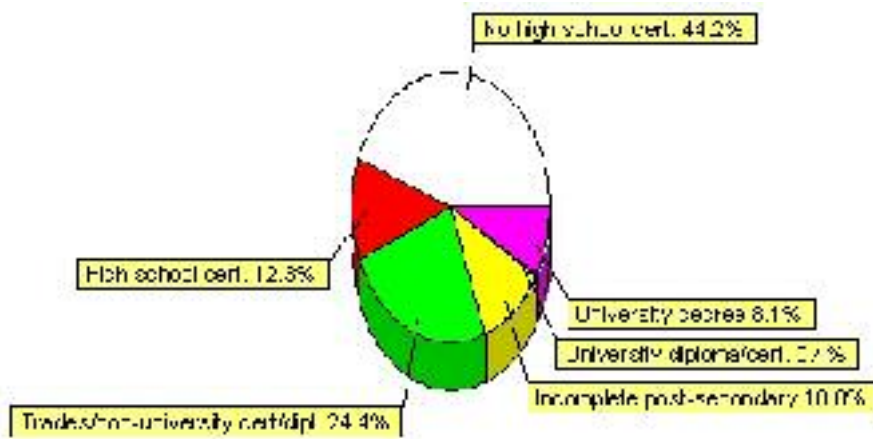


Education Statistics

Highest level of schooling for Population 20yrs and older	2001	%
People without high school certificates	1,060	44.17%
People with high school certificates	295	12.29%
People with trades or non-university certificate or diploma	585	24.38%
People with post-secondary education (not completed)	260	10.83%
People with university diploma/certificate	10	0.42%
People with university degree	195	8.13%
Total Population 20 years and older	2,400	100.00%

Source: Statistics Canada 2001 Census (numbers may not add up due to rounding)

Minburn No. 27, County of Highest Level of Schooling 2001



Population with Post Secondary Qualifications	1996	%	2001	%
Agriculture and biological sciences	115	13.94%	130	16.35%
Commerce, management and business administration	100	12.12%	140	17.61%
Educational, recreational and counseling services	115	13.94%	70	8.81%
Engineering and applied science tech. and trades	265	32.12%	230	28.93%
Engineering and applied sciences	25	3.03%	15	1.89%
Fine and applied arts	10	1.21%	20	2.52%
Health professionals, science and technologies	155	18.79%	135	16.98%
Humanities and related fields	0	0.00%	10	1.26%
Mathematics and physical sciences	0	0.00%	30	3.77%
Social sciences and related fields	30	3.64%	25	3.14%
Other and/or no specialization	0	0.00%	0	0.00%
Total people with post secondary qualifications	825	100.00%	795	100.00%
Females with post-secondary qualifications	390	47.27%	365	45.91%
Males with post-secondary qualifications	435	52.73%	430	54.09%

Source: Statistics Canada 1996 & 2001 Census (numbers may not add up due to rounding)

Labour Force

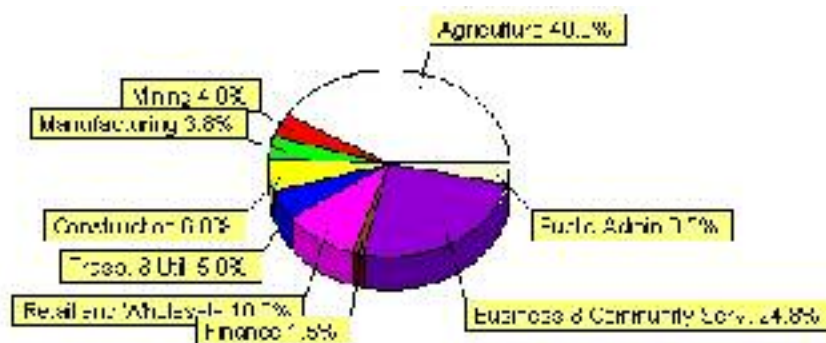
Labour force by activity	1996	2001
In the labour force, both sexes	2,070	2,015
Not in the labour force, both sexes	510	685
Total population 15 and over	2,575	2,700
Employed, both sexes	2,015	1,935
Unemployed, both sexes	55	75
Participation rate, both sexes	80.00%	75.00%
Unemployment rate, both sexes	2.00%	4.00%

Source: Statistics Canada 1996 & 2001 Census (numbers may not add up due to rounding)

Labour Force by Industry Division	1996	% of total	2001	% of total
Agriculture	905	43.93%	815	40.85%
Mining	90	4.37%	80	4.01%
Manufacturing	25	1.21%	75	3.76%
Construction	60	2.91%	120	6.02%
Transportation. & Utilities	95	4.61%	100	5.01%
Retail and Wholesale	280	13.59%	200	10.03%
Finance	40	1.94%	30	1.50%
Business & Community Services	485	23.54%	495	24.81%
Public Administration	130	6.31%	70	3.51%
Total All Industries	2,060	100.00%	1,995	100.00%

Source: Statistics Canada 1996 & 2001 Census (numbers may not add up due to rounding)

Minburn No. 27, County of Labour Force By Industry - 2001



Labour Force by Major Occupational Groups	1996	%	2001	%
Management occupations	65	3.16%	135	6.75%
Business, Finances and administrative occupations	285	13.83%	255	12.75%
Natural and applied sciences and related occupations	60	2.91%	35	1.75%
Health occupations	115	5.58%	90	4.50%
Occupations in social science; education; government and religion	60	2.91%	95	4.75%
Occupations in art; culture; recreation and sport	25	1.21%	15	0.75%

Sales and service occupations	340	16.50%	210	10.50%
Trades; transport; equipment operators and related occupations	170	8.25%	275	13.75%
Occupations unique to primary industry	875	42.48%	845	42.25%
Occupations unique to processing; manufacturing and utilities	60	2.91%	45	2.25%
Occupations not elsewhere classified	10	0.49%	15	0.75%
Total - All Occupations (major groups)	2,060	100.00%	2,000	100.00%
Females - All Occupations	860	41.75%	840	42.00%
Males - All Occupations	1,200	58.25%	1,160	58.00%

Source: Statistics Canada 1996 & 2001 Census (numbers may not add up due to rounding)

Income

Family Income (Number of Families)	1996	%	2001	%
less than \$19,999	175	20.59%	65	8.02%
\$20,000 - \$39,999	310	36.47%	310	38.27%
\$40,000 - \$59,999	180	21.18%	265	32.72%
\$60,000 and over	185	21.76%	245	30.25%
Total number of families	850	100.00%	885	109.26%
Average family income	\$40,755		\$52,224	
Median family income	\$36,635		\$47,337	

Source: Statistics Canada 1996 & 2001 Census (numbers may not add up due to rounding)

Household Income (Number of Households)	1996	%	2001	%
less than \$19,999	325	28.38%	165	13.92%
\$20,000 - \$39,999	385	33.62%	370	31.22%
\$40,000 - \$59,999	230	20.09%	295	24.89%
\$60,000 and over	80	6.99%	340	28.69%
Total number of households	1,145	100.00%	1,185	100.00%
Average household income	\$37,695		\$47,703	
Median household income	\$32,136		\$42,669	

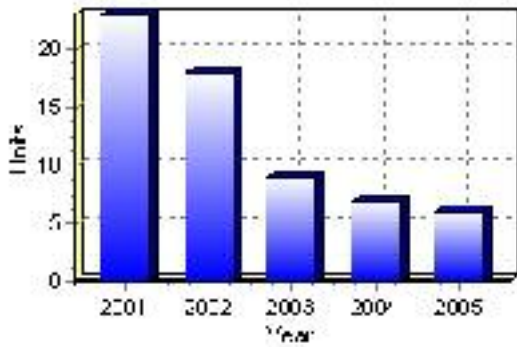
Source: Statistics Canada 1996 & 2001 Census (numbers may not add up due to rounding)

Building Permits

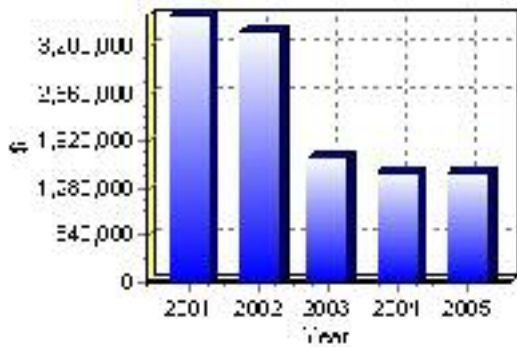
Total Building Permit Values	2001	2002	2003	2004	2005
Building Permits Value, Commercial	\$0	\$115,000	\$70,000	\$20,000	\$94,000
Building Permits Value, Industrial	\$700,000	\$0	\$0	\$135,000	\$0
Building Permits Value, Institutional	\$0	\$0	\$0	\$50,000	\$0
Building Permits Value, Residential	\$2,915,000	\$3,295,000	\$1,613,000	\$1,285,000	\$1,395,000
Building Permits Value, Total	\$3,615,000	\$3,410,000	\$1,683,000	\$1,490,000	\$1,489,000
Total Housing Starts	23	18	9	7	6

Source: Statistics Canada 2000-2004 Building Permits (numbers may not add up due to rounding)

Total Housing Starts



Value of Building Permits



Dwellings

Occupied Private Dwellings by Type	1996	% of total	2001	% of total
Apartments	0	0.00%	0	0.00%
Detached Duplexes	0	0.00%	0	0.00%
Movable Dwellings	80	6.99%	100	8.47%
Other single attached house	0	0.00%	0	0.00%
Row and semi-detached house	0	0.00%	0	0.00%
Single-detached house	1,060	92.58%	1,080	91.53%
Total number of occupied private dwellings	1,145	100.00%	1,180	100.00%
Private dwellings, owned	1,015	88.65%	1,035	87.71%
Private Dwellings, rented	135	11.79%	145	12.29%

Source: Statistics Canada 1996 & 2001 Census (numbers may not add up due to rounding)

Private Dwellings by Period of Construction	# of Dwellings	% of total
Period of construction, before 1946	260	22.03%
Period of construction, 1946 - 1960	250	21.19%
Period of construction, 1961 - 1970	200	16.95%
Period of construction, 1971 - 1980	210	17.80%
Period of construction, 1981 - 1990	125	10.59%
Period of construction, 1991 - 2001	135	11.44%
Total number of private dwellings constructed	1,180	100.00%

Source: Statistics Canada 2001 Census (numbers may not add up due to rounding)

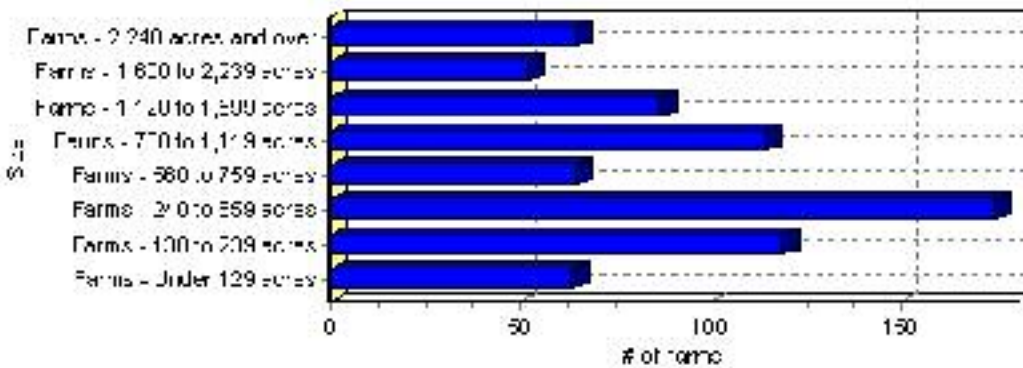
Farming

Minburn No. 27, County of Total Farm Area : 740 acres

Farms by Total Farm Area (2001)	# of Farms	% of total
Farms - Under 129 acres	64	8.63%
Farms - 130 to 239 acres	119	16.04%
Farms - 240 to 559 acres	175	23.58%
Farms - 560 to 759 acres	65	8.76%
Farms - 760 to 1,119 acres	115	15.50%
Farms - 1,120 to 1,599 acres	87	11.73%
Farms - 1,600 to 2,239 acres	52	7.01%
Farms - 2,240 acres and over	65	8.76%
Total number of farms reporting	742	100.00%

Source: Statistics Canada 2001 Census of Agriculture(numbers may not add up due to rounding)

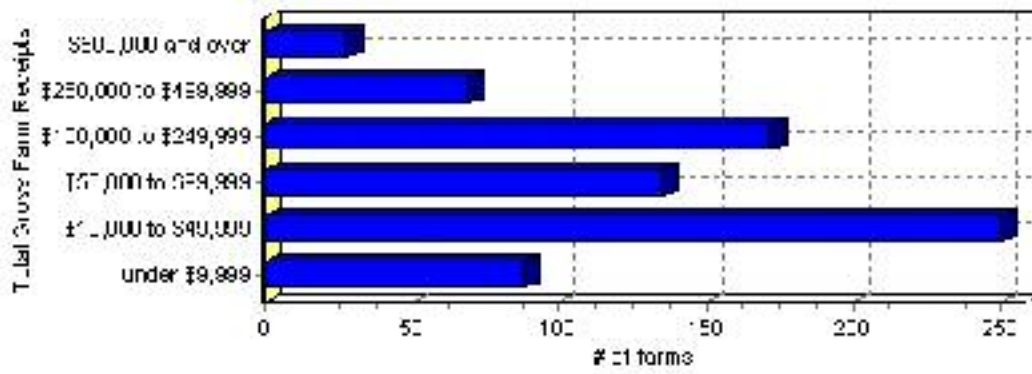
of Farms by Total Farm Area



Farms by Total Gross Farm Receipts - 2001	# of Farms	% of total
Farms gross farm receipts - under \$9,999	88	11.86%
Farms gross farm receipts - \$10,000 to \$49,999	250	33.69%
Farms gross farm receipts - \$50,000 to \$99,999	135	18.19%
Farms gross farm receipts - \$100,000 to \$249,999	172	23.18%
Farms gross farm receipts - \$250,000 to \$499,999	69	9.30%
Farms gross farm receipts - \$500,000 and over	28	3.77%
Total number of farms reporting	742	100.00%

Source: Statistics Canada 2001 Census of Agriculture(numbers may not add up due to rounding)

Total Gross Farm Receipts

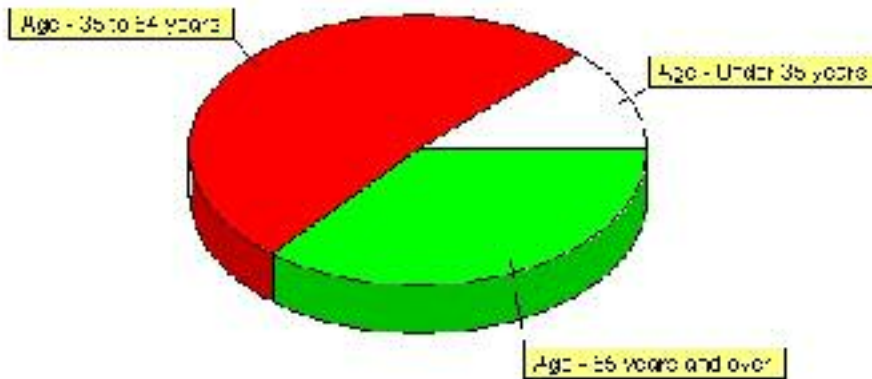


Farming, Continued

Characteristics of Farm Operators	#	%
Age - Under 35 years	125	12.56%
Age - 35 to 54 years	515	51.76%
Age - 55 years and over	360	36.18%
Average age of operators	50	
Number of operators - Female	230	23.12%
Number of operators - Male	765	76.88%
Total number of operators reporting	995	100.00%

Source: Statistics Canada 2001 Census of Agriculture(numbers may not add up due to rounding)

Age of Farm Operators



Disclaimer: Information in this profile has been provided from a variety of external sources. Although every effort has been made to ensure the accuracy, currency and reliability of the content and data, AlbertaFirst.com Ltd. accepts no responsibility in this regard.

© AlbertaFirst.com Ltd., 2006.