

# Lamont

[www.lamont.ca](http://www.lamont.ca)

## Population

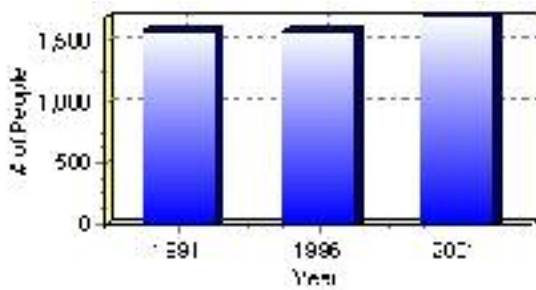
### Total Population

Population 2004*	1,692
Population 2003*	1,692
Population 2002*	1,692
Population 2001**	1,690
Population 2000*	1,581
Population 1996**	1,581
Population 1991**	1,574
Population % change 1991-1996	0.44%
Population % change 1996-2001	6.56%

\* Source: Official Population List, Alberta Municipal Affairs

\*\* Source: Statistics Canada 1991, 1996, & 2001 Census

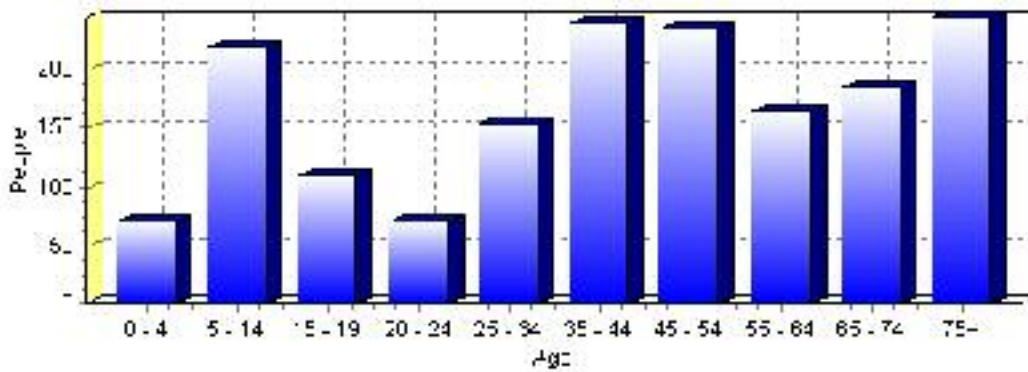
### Total Population 1991-2001



Population by Age and Gender	1996 Male	1996 Female	1996 Total	2001 Male	2001 Female	2001 Total
Age 0 - 4	40	55	95	30	40	70
Age 5 - 14	125	115	240	110	110	220
Age 15 - 19	45	55	100	60	50	110
Age 20 - 24	30	30	60	30	40	70
Age 25 - 34	80	90	170	80	75	155
Age 35 - 44	125	105	230	105	135	240
Age 45 - 54	85	90	175	120	115	235
Age 55 - 64	75	75	150	80	85	165
Age 65 - 74	70	80	150	95	90	185
Age 75 and older	80	130	210	85	160	245
Total All Persons	750	835	1,585	800	890	1,690

Source: Statistics Canada 1996 & 2001 Census (numbers may not add up due to rounding)

### Lamont Population by Age Group (2001)

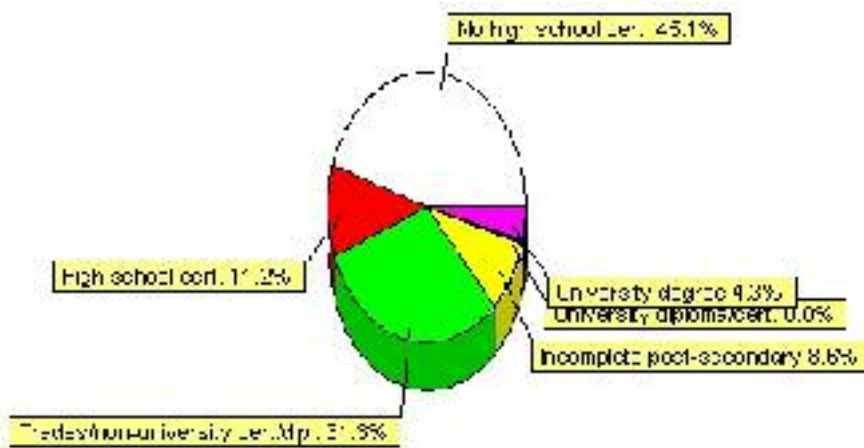


# Education Statistics

Highest level of schooling for Population 20yrs and older	2001	%
People without high school certificates	525	45.06%
People with high school certificates	130	11.16%
People with trades or non-university certificate or diploma	365	31.33%
People with post-secondary education (not completed)	100	8.58%
People with university diploma/certificate	0	0.00%
People with university degree	50	4.29%
Total Population 20 years and older	1,165	100.00%

Source: Statistics Canada 2001 Census (numbers may not add up due to rounding)

## Lamont Highest Level of Schooling 2001



Population with Post Secondary Qualifications	1996	%	2001	%
Agriculture and biological sciences	0	0.00%	10	2.38%
Commerce, management and business administration	35	12.07%	50	11.90%
Educational, recreational and counseling services	45	15.52%	30	7.14%
Engineering and applied science tech. and trades	125	43.10%	220	52.38%
Engineering and applied sciences	0	0.00%	0	0.00%
Fine and applied arts	10	3.45%	20	4.76%
Health professionals, science and technologies	60	20.69%	55	13.10%
Humanities and related fields	0	0.00%	0	0.00%
Mathematics and physical sciences	0	0.00%	0	0.00%
Social sciences and related fields	10	3.45%	15	3.57%
Other and/or no specialization	0	0.00%	0	0.00%
Total people with post secondary qualifications	290	100.00%	420	100.00%
Females with post-secondary qualifications	130	44.83%	170	40.48%
Males with post-secondary qualifications	160	55.17%	250	59.52%

Source: Statistics Canada 1996 & 2001 Census (numbers may not add up due to rounding)

## Labour Force

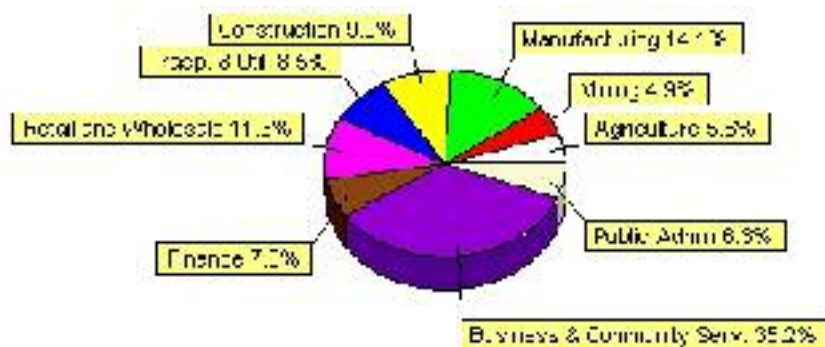
Labour force by activity	1996	2001
In the labour force, both sexes	630	710
Not in the labour force, both sexes	515	600
Total population 15 and over	1,140	1,305
Employed, both sexes	555	680
Unemployed, both sexes	75	30
Participation rate, both sexes	55.00%	54.00%
Unemployment rate, both sexes	11.00%	4.00%

Source: Statistics Canada 1996 & 2001 Census (numbers may not add up due to rounding)

Labour Force by Industry Division	1996	% of total	2001	% of total
Agriculture	0	0.00%	40	5.63%
Mining	40	6.50%	35	4.93%
Manufacturing	85	13.82%	100	14.08%
Construction	25	4.07%	70	9.86%
Transportation. & Utilities	30	4.88%	60	8.45%
Retail and Wholesale	90	14.63%	80	11.27%
Finance	35	5.69%	50	7.04%
Business & Community Services	245	39.84%	250	35.21%
Public Administration	30	4.88%	45	6.34%
Total All Industries	615	100.00%	710	100.00%

Source: Statistics Canada 1996 & 2001 Census (numbers may not add up due to rounding)

### Lamont Labour Force By Industry - 2001



Labour Force by Major Occupational Groups	1996	%	2001	%
Management occupations	30	4.88%	30	4.23%
Business, Finances and administrative occupations	100	16.26%	120	16.90%
Natural and applied sciences and related occupations	15	2.44%	15	2.11%
Health occupations	70	11.38%	45	6.34%
Occupations in social science; education; government and religion	10	1.63%	30	4.23%
Occupations in art; culture; recreation and sport	0	0.00%	10	1.41%

Sales and service occupations	170	27.64%	175	24.65%
Trades; transport; equipment operators and related occupations	140	22.76%	205	28.87%
Occupations unique to primary industry	30	4.88%	40	5.63%
Occupations unique to processing; manufacturing and utilities	40	6.50%	35	4.93%
Occupations not elsewhere classified	10	1.63%	0	0.00%
Total - All Occupations (major groups)	615	100.00%	710	100.00%
Females - All Occupations	290	47.15%	290	40.85%
Males - All Occupations	325	52.85%	425	59.86%

Source: Statistics Canada 1996 & 2001 Census (numbers may not add up due to rounding)

---

## Income

<b>Family Income (Number of Families)</b>	<b>1996</b>	<b>%</b>	<b>2001</b>	<b>%</b>
less than \$19,999	45	12.16%	55	15.94%
\$20,000 - \$39,999	125	33.78%	135	39.13%
\$40,000 - \$59,999	85	22.97%	55	15.94%
\$60,000 and over	115	31.08%	115	33.33%
Total number of families	370	100.00%	360	104.35%
Average family income	\$47,990		\$55,633	
Median family income	\$44,239		\$52,097	

Source: Statistics Canada 1996 & 2001 Census (numbers may not add up due to rounding)

<b>Household Income (Number of Households)</b>	<b>1996</b>	<b>%</b>	<b>2001</b>	<b>%</b>
less than \$19,999	155	26.96%	185	29.13%
\$20,000 - \$39,999	205	35.65%	175	27.56%
\$40,000 - \$59,999	90	15.65%	75	11.81%
\$60,000 and over	45	7.83%	210	33.07%
Total number of households	575	100.00%	635	100.00%
Average household income	\$38,780		\$45,450	
Median household income	\$30,125		\$31,079	

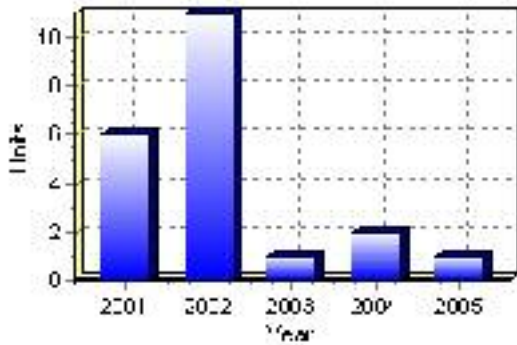
Source: Statistics Canada 1996 & 2001 Census (numbers may not add up due to rounding)

# Building Permits

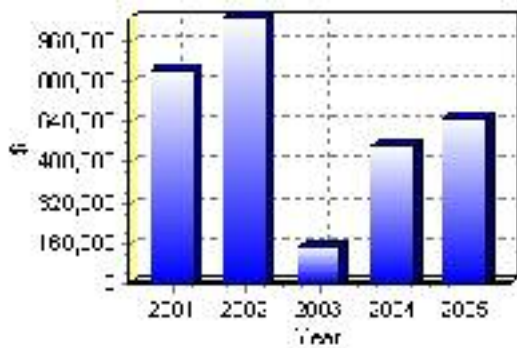
Total Building Permit Values	2001	2002	2003	2004	2005
Building Permits Value, Commercial	\$268,000	\$11,000	\$0	\$250,000	\$0
Building Permits Value, Industrial	\$0	\$0	\$0	\$0	\$0
Building Permits Value, Institutional	\$0	\$66,000	\$0	\$0	\$480,000
Building Permits Value, Residential	\$581,000	\$975,000	\$145,000	\$293,000	\$176,000
Building Permits Value, Total	\$849,000	\$1,052,000	\$145,000	\$543,000	\$656,000
Total Housing Starts	6	11	1	2	1

Source: Statistics Canada 2000-2004 Building Permits (numbers may not add up due to rounding)

## Total Housing Starts



## Value of Building Permits



## Dwellings

<b>Occupied Private Dwellings by Type</b>	<b>1996</b>	<b>% of total</b>	<b>2001</b>	<b>% of total</b>
Apartments	15	2.61%	40	6.25%
Detached Duplexes	0	0.00%	0	0.00%
Movable Dwellings	20	3.48%	5	0.78%
Other single attached house	0	0.00%	0	0.00%
Row and semi-detached house	20	3.48%	40	6.25%
Single-detached house	520	90.43%	555	86.72%
Total number of occupied private dwellings	575	100.00%	640	100.00%
Private dwellings, owned	500	86.96%	485	75.78%
Private Dwellings, rented	80	13.91%	150	23.44%

Source: Statistics Canada 1996 & 2001 Census (numbers may not add up due to rounding)

<b>Private Dwellings by Period of Construction</b>	<b># of Dwellings</b>	<b>% of total</b>
Period of construction, before 1946	95	15.08%
Period of construction, 1946 - 1960	70	11.11%
Period of construction, 1961 - 1970	65	10.32%
Period of construction, 1971 - 1980	235	37.30%
Period of construction, 1981 - 1990	75	11.90%
Period of construction, 1991 - 2001	90	14.29%
Total number of private dwellings constructed	630	100.00%

Source: Statistics Canada 2001 Census (numbers may not add up due to rounding)

Disclaimer: Information in this profile has been provided from a variety of external sources. Although every effort has been made to ensure the accuracy, currency and reliability of the content and data, AlbertaFirst.com Ltd. accepts no responsibility in this regard.

© AlbertaFirst.com Ltd., 2006.