

Paintearth No. 18, County of

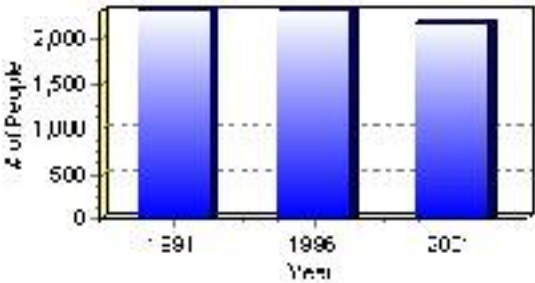
Population

Total Population

Population 2004*	2,192
Population 2003*	2,192
Population 2002*	2,192
Population 2001**	2,195
Population 2000*	2,316
Population 1996**	2,316
Population 1991**	2,324
Population % change 1991-1996	-0.35%
Population % change 1996-2001	-5.66%

* Source: Official Population List, Alberta Municipal Affairs
** Source: Statistics Canada 1991, 1996, & 2001 Census

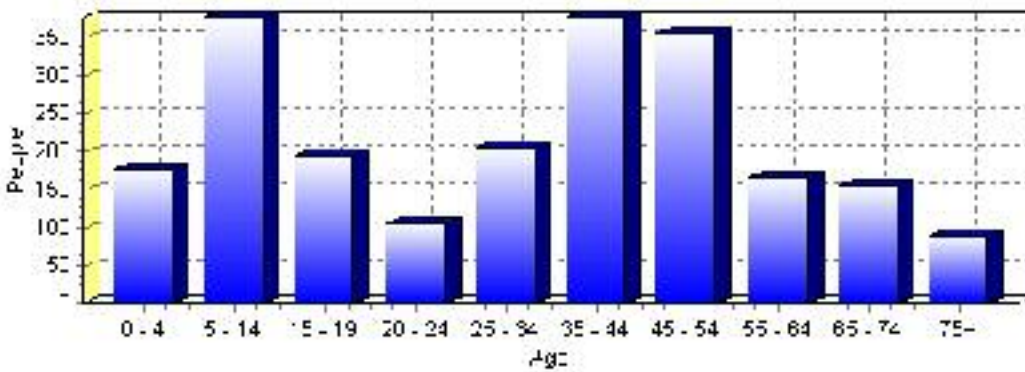
Total Population 1991-2001



Population by Age and Gender	1996 Male	1996 Female	1996 Total	2001 Male	2001 Female	2001 Total
Age 0 - 4	100	95	195	80	95	175
Age 5 - 14	230	195	425	190	185	375
Age 15 - 19	105	110	215	100	95	195
Age 20 - 24	65	55	120	45	60	105
Age 25 - 34	145	150	295	90	115	205
Age 35 - 44	210	205	415	185	190	375
Age 45 - 54	145	115	260	195	160	355
Age 55 - 64	90	85	175	95	70	165
Age 65 - 74	90	60	150	90	65	155
Age 75 and older	30	35	65	55	35	90
Total All Persons	1,220	1,095	2,315	1,110	1,080	2,190

Source: Statistics Canada 1996 & 2001 Census (numbers may not add up due to rounding)

Paintearth No. 18, County of Population by Age Group (2001)

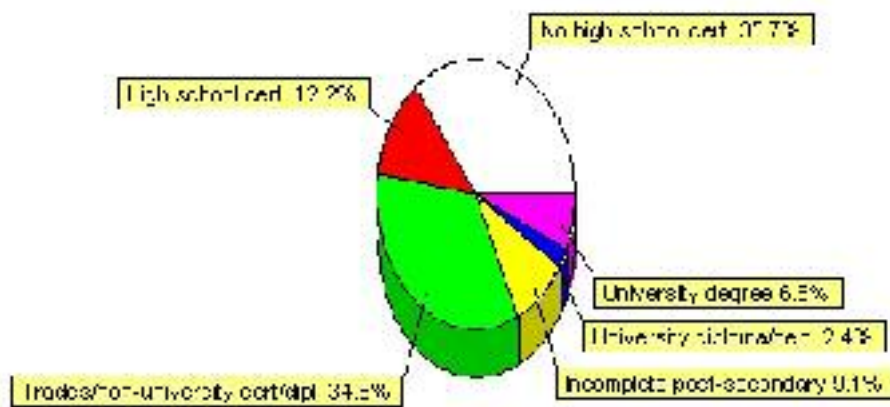


Education Statistics

Highest level of schooling for Population 20yrs and older	2001	%
People without high school certificates	510	35.66%
People with high school certificates	175	12.24%
People with trades or non-university certificate or diploma	495	34.62%
People with post-secondary education (not completed)	130	9.09%
People with university diploma/certificate	35	2.45%
People with university degree	95	6.64%
Total Population 20 years and older	1,430	100.00%

Source: Statistics Canada 2001 Census (numbers may not add up due to rounding)

Paintearth No. 18, County of Highest Level of Schooling 2001



Population with Post Secondary Qualifications	1996	%	2001	%
Agriculture and biological sciences	95	18.10%	115	18.40%
Commerce, management and business administration	85	16.19%	85	13.60%
Educational, recreational and counseling services	85	16.19%	110	17.60%
Engineering and applied science tech. and trades	115	21.90%	150	24.00%
Engineering and applied sciences	0	0.00%	0	0.00%
Fine and applied arts	35	6.67%	35	5.60%
Health professionals, science and technologies	65	12.38%	95	15.20%
Humanities and related fields	10	1.90%	25	4.00%
Mathematics and physical sciences	10	1.90%	10	1.60%
Social sciences and related fields	25	4.76%	10	1.60%
Other and/or no specialization	0	0.00%	0	0.00%
Total people with post secondary qualifications	525	100.00%	625	100.00%
Females with post-secondary qualifications	275	52.38%	350	56.00%
Males with post-secondary qualifications	250	47.62%	275	44.00%

Source: Statistics Canada 1996 & 2001 Census (numbers may not add up due to rounding)

Labour Force

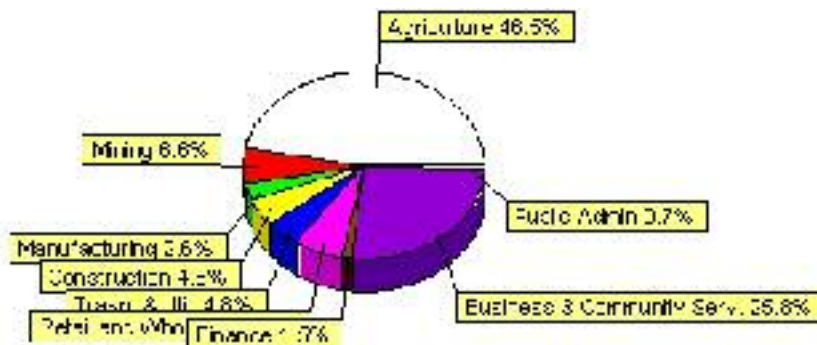
Labour force by activity	1996	2001
In the labour force, both sexes	1,415	1,365
Not in the labour force, both sexes	290	245
Total population 15 and over	1,705	1,610
Employed, both sexes	1,385	1,340
Unemployed, both sexes	30	30
Participation rate, both sexes	83.00%	85.00%
Unemployment rate, both sexes	2.00%	2.00%

Source: Statistics Canada 1996 & 2001 Census (numbers may not add up due to rounding)

Labour Force by Industry Division	1996	% of total	2001	% of total
Agriculture	755	53.36%	630	46.49%
Mining	55	3.89%	90	6.64%
Manufacturing	15	1.06%	35	2.58%
Construction	80	5.65%	65	4.80%
Transportation. & Utilities	60	4.24%	65	4.80%
Retail and Wholesale	60	4.24%	85	6.27%
Finance	20	1.41%	20	1.48%
Business & Community Services	315	22.26%	350	25.83%
Public Administration	50	3.53%	10	0.74%
Total All Industries	1,415	100.00%	1,355	100.00%

Source: Statistics Canada 1996 & 2001 Census (numbers may not add up due to rounding)

Paintearth No. 18, County of Labour Force By Industry - 2001



Labour Force by Major Occupational Groups	1996	%	2001	%
Management occupations	25	1.77%	50	3.69%
Business, Finances and administrative occupations	135	9.54%	110	8.12%
Natural and applied sciences and related occupations	15	1.06%	30	2.21%
Health occupations	45	3.18%	75	5.54%
Occupations in social science; education; government and religion	70	4.95%	45	3.32%
Occupations in art; culture; recreation and sport	10	0.71%	20	1.48%

Sales and service occupations	245	17.31%	170	12.55%
Trades; transport; equipment operators and related occupations	175	12.37%	150	11.07%
Occupations unique to primary industry	665	47.00%	675	49.82%
Occupations unique to processing; manufacturing and utilities	30	2.12%	30	2.21%
Occupations not elsewhere classified	0	0.00%	10	0.74%
Total - All Occupations (major groups)	1,415	100.00%	1,355	100.00%
Females - All Occupations	645	45.58%	645	47.60%
Males - All Occupations	770	54.42%	710	52.40%

Source: Statistics Canada 1996 & 2001 Census (numbers may not add up due to rounding)

Income

Family Income (Number of Families)	1996	%	2001	%
less than \$19,999	65	11.61%	55	10.00%
\$20,000 - \$39,999	190	33.93%	160	29.09%
\$40,000 - \$59,999	180	32.14%	160	29.09%
\$60,000 and over	125	22.32%	160	29.09%
Total number of families	560	100.00%	535	97.27%
Average family income	\$44,615		\$54,726	
Median family income	\$42,221		\$46,825	

Source: Statistics Canada 1996 & 2001 Census (numbers may not add up due to rounding)

Household Income (Number of Households)	1996	%	2001	%
less than \$19,999	145	20.57%	95	13.97%
\$20,000 - \$39,999	230	32.62%	195	28.68%
\$40,000 - \$59,999	190	26.95%	180	26.47%
\$60,000 and over	50	7.09%	210	30.88%
Total number of households	705	100.00%	680	100.00%
Average household income	\$41,563		\$51,132	
Median household income	\$35,561		\$45,346	

Source: Statistics Canada 1996 & 2001 Census (numbers may not add up due to rounding)

Dwellings

Occupied Private Dwellings by Type	1996	% of total	2001	% of total
Apartments	10	1.42%	5	0.72%
Detached Duplexes	0	0.00%	0	0.00%
Movable Dwellings	75	10.64%	80	11.59%
Other single attached house	0	0.00%	0	0.00%
Row and semi-detached house	0	0.00%	0	0.00%
Single-detached house	625	88.65%	605	87.68%
Total number of occupied private dwellings	705	100.00%	690	100.00%
Private dwellings, owned	615	87.23%	595	86.23%
Private Dwellings, rented	85	12.06%	80	11.59%

Source: Statistics Canada 1996 & 2001 Census (numbers may not add up due to rounding)

Private Dwellings by Period of Construction	# of Dwellings	% of total
Period of construction, before 1946	175	25.55%
Period of construction, 1946 - 1960	65	9.49%
Period of construction, 1961 - 1970	90	13.14%
Period of construction, 1971 - 1980	130	18.98%
Period of construction, 1981 - 1990	140	20.44%
Period of construction, 1991 - 2001	85	12.41%
Total number of private dwellings constructed	685	100.00%

Source: Statistics Canada 2001 Census (numbers may not add up due to rounding)

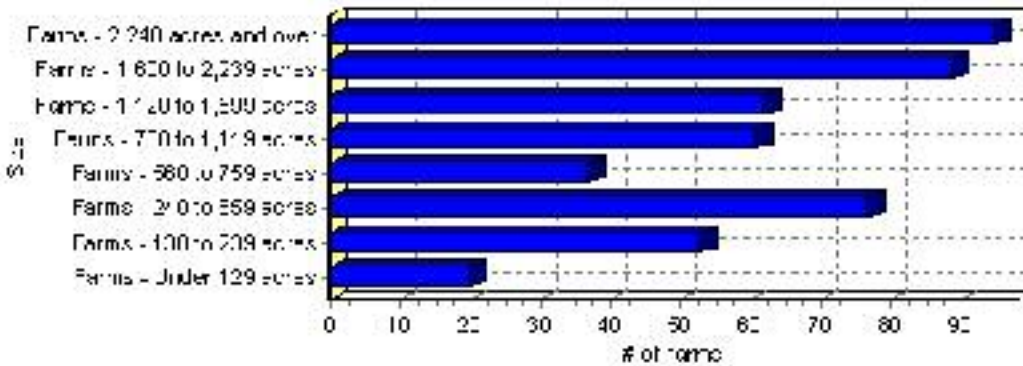
Farming

Paintearth No. 18, County of Total Farm Area : 495 acres

Farms by Total Farm Area (2001)	# of Farms	% of total
Farms - Under 129 acres	20	4.05%
Farms - 130 to 239 acres	53	10.73%
Farms - 240 to 559 acres	77	15.59%
Farms - 560 to 759 acres	37	7.49%
Farms - 760 to 1,119 acres	61	12.35%
Farms - 1,120 to 1,599 acres	62	12.55%
Farms - 1,600 to 2,239 acres	89	18.02%
Farms - 2,240 acres and over	95	19.23%
Total number of farms reporting	494	100.00%

Source: Statistics Canada 2001 Census of Agriculture(numbers may not add up due to rounding)

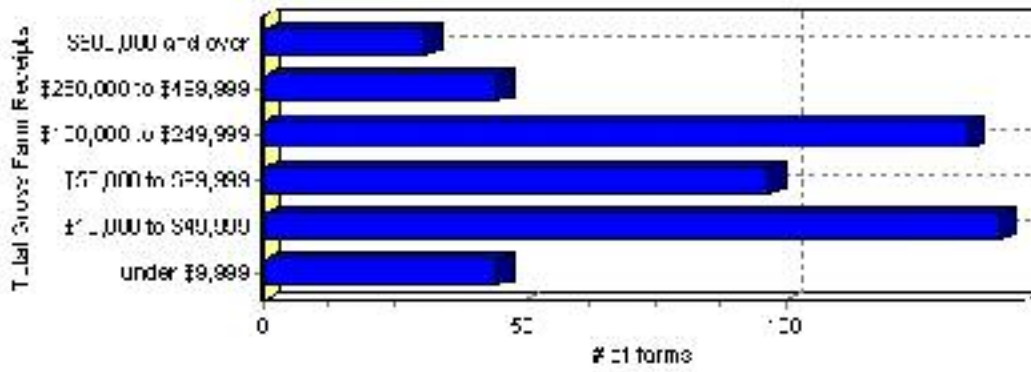
of Farms by Total Farm Area



Farms by Total Gross Farm Receipts - 2001	# of Farms	% of total
Farms gross farm receipts - under \$9,999	45	9.11%
Farms gross farm receipts - \$10,000 to \$49,999	141	28.54%
Farms gross farm receipts - \$50,000 to \$99,999	97	19.64%
Farms gross farm receipts - \$100,000 to \$249,999	135	27.33%
Farms gross farm receipts - \$250,000 to \$499,999	45	9.11%
Farms gross farm receipts - \$500,000 and over	31	6.28%
Total number of farms reporting	494	100.00%

Source: Statistics Canada 2001 Census of Agriculture(numbers may not add up due to rounding)

Total Gross Farm Receipts

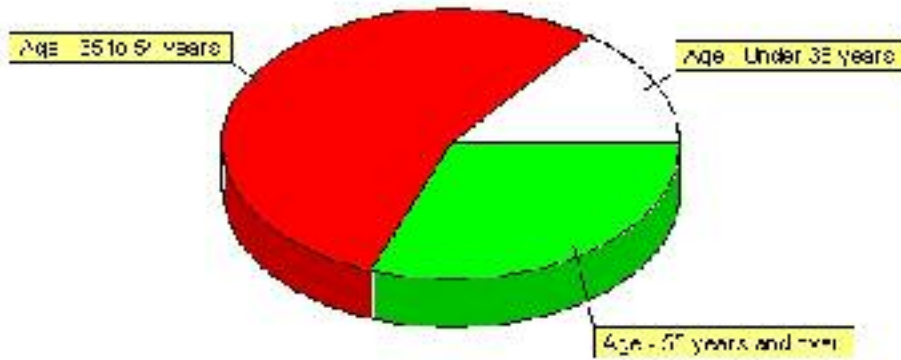


Farming, Continued

Characteristics of Farm Operators	#	%
Age - Under 35 years	100	14.71%
Age - 35 to 54 years	375	55.15%
Age - 55 years and over	210	30.88%
Average age of operators	49	
Number of operators - Female	165	24.26%
Number of operators - Male	520	76.47%
Total number of operators reporting	680	100.00%

Source: Statistics Canada 2001 Census of Agriculture(numbers may not add up due to rounding)

Age of Farm Operators



Disclaimer: Information in this profile has been provided from a variety of external sources. Although every effort has been made to ensure the accuracy, currency and reliability of the content and data, AlbertaFirst.com Ltd. accepts no responsibility in this regard.

© AlbertaFirst.com Ltd., 2006.