

Wetaskiwin

www.wetaskiwin.ca

Welcome

The mission of Wetaskiwin City Council is: to make **Wetaskiwin, City in Motion**, ***"the best place to be"***.

Wetaskiwin is a vibrant, growing community combining the amenities of a large centre with the relaxing atmosphere of a small town. Beautiful parks, historical sites, fine dining, shopping, cultural programs and activities - Wetaskiwin has it all.

The **City of Wetaskiwin** has friendly people with friendly attitudes, excellent schools, health services, recreational facilities, churches for all denominations, a full range of personal and professional services, and a variety of arts and entertainment venues for young and old alike.

I invite you to explore Wetaskiwin and see why our "City in Motion", is indeed "the best place to be".

Mayor Don Montgomery



North Entrance Sign to the City of Wetaskiwin



Wetaskiwin Water Tower The "Oldest Working Water Tower in Canada" (Built 1906 - fully refurbished 2005)

Area Overview

With a diversified, well-trained labour force, affordable land prices, a generous business incentive plan, and no municipal business tax, the City of Wetaskiwin is predicted to be one of the fastest growing cities in Alberta in this new millennium.

Climate

Wetaskiwin has a moderate climate that enjoys four distinct seasons. Precipitation averages 10.7 inches of which 5.9 inches falls as snow.

From May to September the mean rainfall averages 11.8 inches and is sufficient to ensure a good crop. July and August are the warmest months with a temperature range of 15-23C. Individual snowfalls rarely exceeds 6 inches and a snow depth of 12 inches occurs on the average of once in 10 years.

Seasonal Average Temperature:

Summer: 17.1 C (62.8 F)

Spring: 4.2 C (39.6 F)

Fall: 5.1 C (41.2 F)

Winter: -16.6 C (2.1 F)

Average Annual Precipitation:

Rain: 12.8 in.

Snow: 39.3 in.

Total: 52.1 in.

Frost Free Days - 109 days per year

Hours of sunshine per year - 2,263.7 hours



Aerial Photo of the City of Wetaskiwin

Community Services

CITY OF WETASKIWIN:

City of Wetaskiwin
4904 - 51 Street
Wetaskiwin, Alberta
T9A 1L2
Phone: (780)361-4400
Fax: (780)352-0930

MUNICIPAL COUNCIL:

Mayor:

- Don Montgomery

Alderman:

- Dave Anderson
- Donna Andres
- Bill Elliot
- Kevin Miller
- Gail Taylor
- Dale Unland

Mayor and Alderman can be contacted by calling City Hall at 361-4409.

ADMINISTRATION:

Tony Goode
City Manager
Phone: (780) 361-4410
email: tgoode@wetaskiwin.ca

Therese Myndio

Assistant City Manager
Phone: (780) 361-4414
email: tmyndio@wetaskiwin.ca

CITY DEPARTMENTS:

- City Hall - (780) 361-4400
- Recreation - (780) 361-4444
- Public Library - (780) 361-4485
- Family & Community Support Services - (780) 361-4425
- Engineering - (780) 361-4430
- Assessment - (780) 361-4405
- Public Works - (780) 361-4436
- Municipal Bylaw Services - (780) 312-7212
- RCMP - (780) 312-7200

The **Wetaskiwin Public Library** is very active offering a large collection of books, cd's, videos, for the citizens of the City. The library is also linked to the Yellowhead Regional Library which provides access to several on-line databases and book services. Some of the programs that are offered are childrens story-time, winter/summer reading programs, adult programs and computer classes.

The **Wetaskiwin Archives** is located in the lower level of City Hall. Documents and photographs from as far back as the 1890's are stored at the City of Wetaskiwin Archives. You can trace your family history using 1902 tax or school records or find an 1895 picture of your great-grandfather among the more than 100,000 photographs in this collection. Records of businesses and community organizations are also among the holdings. For more information contact Carolyn Hill at (780) 361-4423.

The **Communities In Bloom Committee** was formed in 1999 and has resulted in awards on the provincial and national level. This program has made a very visible difference in the community with the addition of hanging baskets, planters, designated flower beds, banners, clean-up campaigns, contests for residential and commercial flower displays and the generation of a wonderful community spirit. The City of Wetaskiwin is very proud of the work that is done by the Communities In Bloom Committee.

Wetaskiwin boasts a wide range of **Community Organizations**. These include cultural and historical organizations, sports clubs, youth groups, fitness centers, senior's center/services, childcare programs, and many services clubs that provide something for everyone's needs.



City Hall

Community Lifestyle

TOURISM:

It has been said that Wetaskiwin is central Alberta's best-kept secret!! Well, everyone likes to know what a secret is about so we encourage you to make a visit to our community. We have museums, parks, restaurants, agricultural grounds, sport activities, restaurants, hotels, and bed & breakfasts.

The [Wetaskiwin and District Museum](#) houses displays of the history of the City dating back to the days of the pioneers, including re-creations of a general store, hotel room and local garage. Visit their new location in the historical downtown core.

The [Reynolds-Alberta Museum](#) contains some of the finest restored vintage vehicles found anywhere. The star attraction is a one-of-a-kind 1929 Duesenberg Phaeton Royale. Others include a 1922 Hupp Yeats electric car and a 1940 Chevrolet half-ton pickup. Vintage car rides are available through the summer.

Situated on the Reynolds-Alberta Museum grounds is [Canada's Aviation Hall of Fame](#), where the pioneers of aviation, and the aircraft they flew, are celebrated and honored. The Hall's collection features a 1940 de Havilland Tiger Moth, a 1943 Boeing Steerman and a 1939 Fleet Finch. For the adventurous, vintage airplane rides are available.

The [Reynolds Aviation Museum](#), owned by collector Stan Reynolds, is one of the most significant Canadian collections of vintage aircraft and related articles. Open seasonally, it is well worth the visit for anyone interested in transportation and/or military memorabilia.

The [Museum Mile](#) is located on the first mile stretch from the junction of Hwy 2A and Hwy 13, west to the Reynolds-Alberta Museum. Along this mile you will find various artifacts from the Stan Reynolds Collection, each beautifully displayed with trees and shrubs.

The [Alberta Central Railway Museum](#) is nestled away on a scenic and pastoral quarter section of land 14 kilometers southeast of Wetaskiwin. This museum is dedicated to the history of rail travel in Western Canada, a varied collection of CPR stock and demonstrations of the telegraph service used by CP Rail in the 1960s. Be sure to catch a train ride and explore Alberta Central rails. Phone/fax: (780) 352-2257

Wetaskiwin is also home to the [Edmonton International Raceway](#), Central Alberta's only oval track.

Click here to view more information on [Tourism](#).

RECREATION:

Wetaskiwin is an active community, with a variety of recreational facilities and activities for all ages. For complete information on the City of Wetaskiwin's recreation programs [click here](#).

The [Civic Centre Complex](#), known as the twin arenas, is located on the east side of Wetaskiwin at the Recreation Grounds, and operates under the umbrella of the City of Wetaskiwin.

The facility contains two ice surfaces, Arena I is 190' x 85', and Arena II is 185' x 85'. The facility operates from September to late March. Other amenities in the Civic Centre include a concession and a meeting room to accommodate any type of group meeting.

The Civic Centre is home to the Wetaskiwin Icemen Jr. B Hockey Club, Figure Skating Club, Ringette Club and Various Adult teams. It is also the site of the Pioneer Chrysler Cup Zone Camp for first year bantams in March. The Wetaskiwin Minor Hockey Association is a major user of the facility.

A nearby eight-sheet [Curling Rink](#) provides residents of the City and surrounding area with a great facility for curling. The Club also offers concession and lounge facilities. Throughout the curling season a complete range of programs is offered, recreational, competitive and youth activities.

Other recreational facilities include four tennis courts, eight ball diamonds, two sand volleyball courts, football field, soccer fields, bowling alley, and bingo halls.

The [Aboussafy Centre](#) contains a large indoor pool, kiddie pool, hot tub and saunas. The centre offers all levels of swimming

instruction, karataquatics, aquafit, and public swimming.

The [Wetaskiwin Youth Skatepark](#) was newly constructed in 2001 and has become a action pact facility for youth skateboards in the community. This skatepark was designed to be one of the best in the area.

If you like to golf, Wetaskiwin has two courses to choose from. The [Wetaskiwin Golf Course](#) is located along the north entrance to the City. You can chose 9 or 18 holes of beautifully groomed and established greens.

[Loons Golf Course](#), a 9-hole golf course is located along the east entrance to the City, directly across from the Lions campground. This is a newly established course, but nonetheless challenging for the avid golfer.

PARKS:

The City of Wetaskiwin is proud of its' numerous park areas.

The [By-the-Lake Park](#), our biggest outdoor facility, is a superb day-use area featuring connections to a network of city-wide walking and bike paths. The park features a 17-acre lake and a 2.5 km interpretive trail.

The park is open 365 days of the year and includes other activities such as a water playground, Japanese Golf, picnic areas and canoeing. In the winter, the park is open for cross-country skiing, skating and tobogganing.

Also located at the park is the Knights of Columbus Hall that overlooks the lake. This hall can host 90-100 people and is available for rent from the City Recreation Department. To read more about the park [click here](#).

[Jubilee Park](#) is located along the main entrance to the downtown core. This is one of the oldest parks in the community, with mature trees, a walking path, rose garden, and cenotaph.

Other parks are located throughout the City and are joined by sidewalks and urban trail systems.

CAMPING:

The Wetaskiwin [Lions Community R.V. and Campground](#) has 27 fully serviced sites, 22 sites with power and water only, and 25 un-serviced sites, plus an area for tenting. There is also a full washroom and shower facility on site. Other activities include a playground, two cook houses, trout pond, and a sani-dump. A newly constructed walking path from the campground joins onto City sidewalks and leads you to the recreation grounds. Further information can be obtained by calling (780) 352-7258, e-mail at wetlionrvpark@incentre.net, or visit their website at [Lions Campgrounds](#).

[Peace Hills Park](#) is located west of the Wetaskiwin Golf Course on Highway 2A. This is a day use park with hiking, a picnic shelter, off-leash dog run, and a skating pond in the winter.

RELIGIOUS FACILITIES:

Close to twenty different denominations are represented within the City of Wetaskiwin.

LOCAL EVENTS:

For an up to date list of current events in the City of Wetaskiwin [click here](#).

January hosts the [Wetaskiwin Snow Drags/Snowmobile Races](#) at the Reynolds-Alberta Museum. Two days of competition with hunreds of partciapants and spectators to help warm up the atmosphere in Wetaskiwin.

The [Wetaskiwin Agricultural Society](#) hosts the annual Poultry and Rabbit Show at the Drill Hall in February where visitors can view many, many different species of poultry and rabbits.

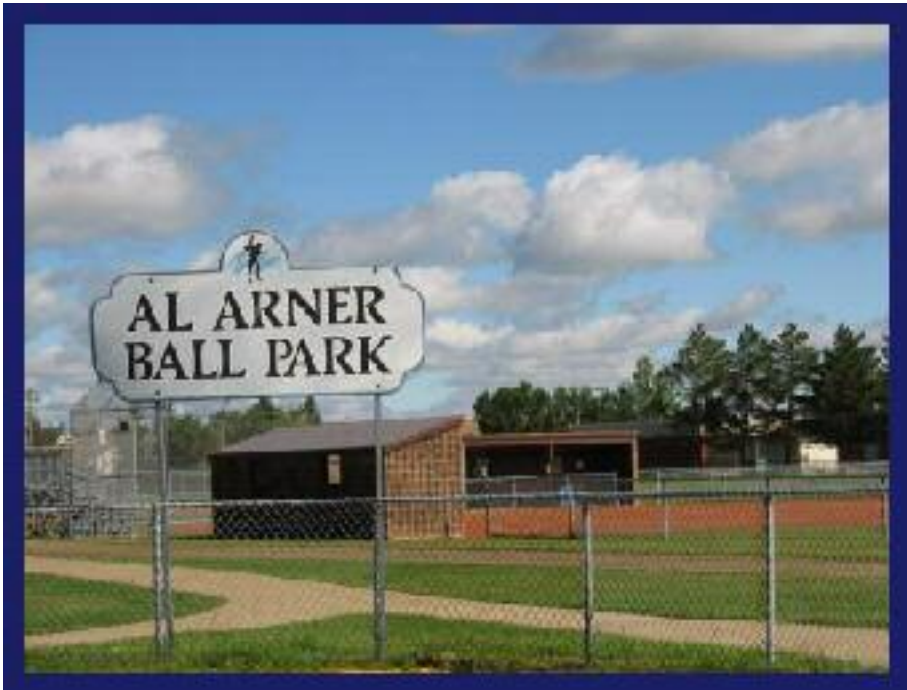
The big event is the annual Rodeo on the May long weekend. There are three days of activities, a Rodeo Dance, muttin bustin and just a whole lot a fun!!!

Wetaskiwin hosts the annual [Pioneer Days](#) Event during the third weekend in June. This old-fashioned country fair includes amusement rides, a parade, live entertainment and games for kids, and much, much more! A great family event to kick of the summer.

Another annual event is the [Santa Clause Parade and Gingerbread and Glitter](#). This event is organized by the Friends of the Community and is held on the last weekend of November. Gingerbread and Glitter consists of a display of decorated trees, wreaths

and gingerbread houses all done in the spirit of Christmas. Proceeds from the event are given to Secret Santa.

Other local events include Canada Day Celebrations, Antique Road Shows, Craft Sales, and many small local activities organized by the several service clubs and sport organizations in the community.



Al Arner Ball Park (four diamonds)



Lions Campground



Wetaskiwin Old Courthouse - Built 1907 Federal Provincial Historic Site



Wetaskiwin Golf Course (18 hole)



Abousaffy Center Swimming Pool



Jubilee Park (downtown)



By-the-Lake Park and Knights of Columbus Hall



Museum Mile (enroute to Reynolds-Alberta Museum)



Wetaskiwin Skatepark Built 2001



Pioneer Days Parade - Held annually in June



Canada's Aviation Hall of Fame (adjacent to Reynolds-Alberta Museum)



Edmonton International Raceway



Central Alberta Railway Museum



Wetaskiwin Civic Centre Drill Hall, Arena I & Arena II



Recreation Grounds Park



Reynolds-Alberta Museum (World-Class Provincial Museum)



Wetaskiwin Senior's Centre



Aboussafy Centre Swimming Pool



Pioneer Days - Tot Rides

Economic Base

The main economic base of Wetaskiwin is farming, manufacturing of agricultural products and distribution, tourism, oil and gas.

With more than 600 businesses, Wetaskiwin covers a wide spectrum of retail and service trades.

Many beautiful old storefronts have been brought back to their original design, giving the downtown an historic but new look. As well, the Wetaskiwin Mall features convenient "one-stop shopping" with department, clothing, jewellery, banking and dining.

Construction of a new 32 acre "power centre" commenced in the spring of 2005. The first business to locate at the centre was a 100,000 sq ft Wal-mart store which opened in August of 2005. Extra Foods will begin construction on a new store in the spring of 2006 with several other retail stores to follow by the end of 2006.

Wetaskiwin is home to the Western Canada Distribution centre for Home Hardware. A 560,000 square foot warehouse facility featuring sophisticated materials handling equipment for shipments to all Home Hardware stores located in Western Canada.

Finally, the Wetaskiwin Auto Mile has given the City the distinctive title of "Car Capital of Canada", with the highest per capita auto sales in the nation.



Historic Downtown 50th Avenue east

Economic Facts

FINANCIAL INSTITUTIONS:

- Bank of Nova Scotia
- Canadian Imperial Bank of Commerce
- Bank of Montreal
- Royal Bank
- Toronto-Dominion Bank
- Alberta Treasury Branch
- Wetaskiwin Credit Union

Education

Wetaskiwin is home to the **Wetaskiwin Regional School Division #11** which is responsible for all schools within the City and County of Wetaskiwin. There are nine public schools within the City and 11 school within the County. To contact the School Division please call (780) 352-6018.

PUBLIC SCHOOLS:

- C.B. McMurdo Elementary School [K-6]
- Centennial Elementary School [K-6]
- Norwood Elementary School [K-6]
- Parkdale School [K-6]
- Clear Vista School [1-9]
- Queen Elizabeth School [7-9]
- Wetaskiwin Composite Storefront School [5-12]
- Wetaskiwin Composite High School [10-12]

SEPERATE SCHOOLS:

- Sacred Heart School (K-9)

PRIVATE SCHOOLS:

- Peace Hills Adventist Academy (K-9)

DAYCARE/NURSERY SCHOOLS:

- Building Block Preschool
- Tiny Tots Playschool
- Family Day Home Project and Wetaskiwin Day Care
- Children's Indoor Play Society [CHIPS]



Queen Elizabeth Junior High School - Built 2000

Emergency Services

FIRE PROTECTION:

The **Wetaskiwin Fire Department** consists of twenty-four members composed of a full time Fire Chief and Deputy Chief. All other members are part time paid/volunteers:

The Department utilizes two pumpers, a rescue unit, and an aerial truck for City calls, and a pumper and a tanker are used to respond to rural calls.

Fire Prevention activities include school tours of the fire station, presentations at the schools, and general public education. In 2001 the Wetaskiwin Fire Department was 100 years old.

POLICE SERVICES:

Wetaskiwin hosts two detachments of the Royal Canadian Mounted Police. One responsible for the City and one responsible for rural areas. A new RCMP Station was constructed in 2002 which amalgamated personnel from the City, Rural, and Highway Detachments.

AMBULANCE:

The local ambulance service operates out of the Wetaskiwin Hospital.

WETASKIWIN EMERGENCY TELEPHONE NUMBERS:

- Fire Alarm - 911
- City RCMP - 352-3384
- Rural RCMP - 352-2218
- Ambulance - 911
- Hospital - 361-7100
- Emergency Response Team - 361-7165
- Victim Services Unit - 780-352-6791
- Citizens on Patrol - 780-361-7200



Wetaskiwin Fire Department



RCMP Building - built 2001

Health Care

WETASKIWIN HEALTH CENTRE:

A new \$32 million hospital opened in 1991, which offers a full range of the high quality health services. The hospital has 83 acute care beds and 105 long-term beds (including auxiliary). The Wetaskiwin Health Foundation is very active in providing funding for special services and equipment. In 2004 the Foundation will be purchasing a CATSCAN and completing a new dialysis addition to the Centre.

Professional services include five medical clinics, a community health unit, and a variety of specialist services ranging from dentists to optometrists and chiropractic practitioners.

OTHER HEALTH SERVICE ORGANIZATIONS:

- AADAC
- AA/Alanon
- Canadian Cancer Society
- Canadian Red Cross
- Catholic Social Services (handicapped services)
- Wetaskiwin Handi-van Society
- Horizons Centre (handicapped services)
- Mental Health Centre
- Native Counselling Services of Alberta
- Keystone Children's Services
- Wetaskiwin and District Association for Community Service (handicapped services)

SENIOR HEALTH SERVICES:

Wetaskiwin has seven senior homes ranging from independent living to extended care.

Contacts:

- Senior's Homes & Community Housing - (780) 352-4435
- Good Shepherd Lutheran Home - (780) 352-3628



David Thompson Health Centre

Key Contacts for Business Development

City of Wetaskiwin

4904 - 51 Street
Wetaskiwin, Alberta
T9A 1L2
Phone: (780) 361-4400
Fax: (780) 352-0930
www.wetaskiwin.ca

Don Montgomery
Mayor
mayor@wetaskiwin.ca

Tony Goode
City Manager
Phone: (780) 361-4410
tgoode@wetaskiwin.ca

Randy Richards
Development Officer
Phone: (780) 361-4433
rrichards@wetaskiwin.ca

Provincial:

LeRoy Johnson
Member of the Legislative Assembly [MLA]
Wetaskiwin-Camrose Constituency
#503 Legislature Building
10800-97 Avenue
Edmonton AB
T5K 2B6

(780) 415-0977
(780) 422-0351

Constituency Office:
4870 - 51 Street
Camrose AB
T4V 1S1
(780) 672-0000
(780) 672-6945

Federal:

Blaine Calkins
Member of Parliament [MP]
Wetaskiwin Constituency
House of Commons
Ottawa, ON K1A 0A6

Location

The City of Wetaskiwin is located at the junction of Highway 2A and Highway 13, 72 km south of Edmonton, 100 km north of Red Deer, and 232 km north of Calgary.

Connecting highways include Highway 2A north to Leduc and south to Red Deer; and Highway 13 east to Camrose and west to Highway 2. Highway 2 is the main north-south route linking Calgary and Edmonton.

The census results as of 2001 show a population of 11,154.

The City of Wetaskiwin has a good selection of land available for sale. Additional information can be obtained by visiting the city's website at [City of Wetaskiwin](#) for details.

Post Secondary Education

Wetaskiwin is conveniently located close to Edmonton-based post-secondary institutions such as the University of Alberta, Northern Alberta Institute of Technology (NAIT), and Grant MacEwan College.

[Norquest Community College](#) has a satellite campus located in Wetaskiwin. In 2004, the campus expanded from 6,500 square feet of space to approximately 9,000 square feet. They offer high school upgrading and university entry courses.

Taxation

	Residential/Farmland	Non-Residential
2005		
Municipal Tax Rate	10.5341	16.3993
Education - Alberta School Foundation Fund Tax Rate	4.2808	7.4712
Education Opted Out Tax Rate	4.2808	7.4712
Ambulance Authority	.0405	.0405
Seniors Lodge Accommodation Tax Rate	.0905	.0905

Mill Rates [2004]

- Residential: Mill rate 14.9644
For every \$100,000 of residential assessment, property taxes are \$1,496.44.
- Non-Residential Public: Mill rate 24.5699
For every \$100,000 or non-residential assessment, property taxes are \$2,456.99
- Non-Residential Separate: Mill rate 24.5699
For every \$100,000 of non-residential assessment, property taxes are \$2,456.99.

Please note: Non-residential public and non-residential separate is classified as anything not zoned residential.

Click here for further information on [Taxation](#).

	Residential/Farmland	Non-Residential
2003		
Municipal Tax Rate	11.8420	15.8810
Education - Alberta School Foundation Fund Tax Rate	4.7097	8.1429
Education Opted Out Tax Rate	4.7097	8.1429
Seniors Lodge Accommodation Tax Rate	.0935	.0935

Transportation

AIR SERVICE

Ideally located just 60 km. (37 miles) south of the City of Edmonton, the [Wetaskiwin Airport](#) offers many conveniences and amenities for aviation businesses and aircraft operators. With a 3,900 foot runway, the Airport currently maintains Transport Canada certification and was one of the first facilities in the country to be certified with Global Positioning System (GPS) approach procedures.

The Wetaskiwin Airport is an authorized Customs Canada point of entry for private individuals and commercial operators holding pre-approved CANPASS permits. Pilots and passengers visiting this facility will find the simplified security procedures convenient, effective and user-friendly.

The Airport runway provides direct aircraft access to the Reynolds-Alberta Museum and Canada's Aviation Hall of Fame.

RAIL SERVICE

Wetaskiwin is serviced by Canadian Pacific Railway. A secondary main line runs north-south through the City while a branch line runs east-west.

HIGHWAYS

Connecting highways include Highway 2A north to Leduc and south to Red Deer. Highway 13 east to Camrose and west to Highway 2. Highway 2 is the main north-south route linking Calgary and Edmonton.



Wetaskiwin Regional Airport

Utilities

EPCOR UTILITIES

**no local office

Edmonton/Calgary (main office)

Phone: (780) 310-4300 toll free (for hookups and service)

Call centre open Mon-Fri: 7:30 - 10:00 p.m.; Saturday 8:00 - 8:00 p.m.; Sunday 9:00 - 5:30 p.m.

Fax: (780) 310-4295

ATCO GAS LTD.

(3701-48 Street, Wetaskiwin (service dispatch office only)

Edmonton/Calgary (main office)

Phone: (780) 310-5678 toll free (for hookups & service)

Emergency after hours: 1-800-511-2447

Rates vary. Contact office directly.

TELUS PHONE SERVICE

Phone: 310-2255 (toll free to Edmonton)

WATER

City of Wetaskiwin

4904-51 Street

Wetaskiwin, AB T9A 1L2

Phone: (780) 352-361-4415

Rates vary. Contact office directly.

Wetaskiwin's source of water is the Coal Lake, located 10 km east of the City. The reservoir capacity, measured in treated substance, is 20,450 cubic metres.

SEWAGE TREATMENT

Provided by a series of lagoons consisting of two short, three aerated and three long detention ponds.

GARBAGE COLLECTION

Residential garbage is collected weekly, while commercial and industrial garbage is collected by contractual arrangement. Rates are charged as per subscription costs. Please call (780) 361-4415 to make arrangements.

Click here for more information on [Utilities](#).

RECYCLING

The City of Wetaskiwin has a local recycling centre that is open 24 hours/day, 7 days/week for use by residents of the City.



Recycling Centre

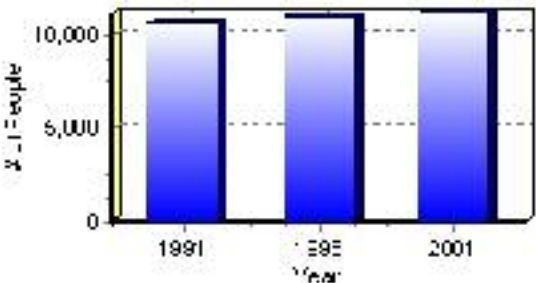
Population

Total Population

Population 2004*	11,154
Population 2003*	11,154
Population 2002*	11,154
Population 2001**	11,155
Population 2000*	10,959
Population 1996**	10,959
Population 1991**	10,634
Population % change 1991-1996	2.97%
Population % change 1996-2001	1.75%

* Source: Official Population List, Alberta Municipal Affairs
** Source: Statistics Canada 1991, 1996, & 2001 Census

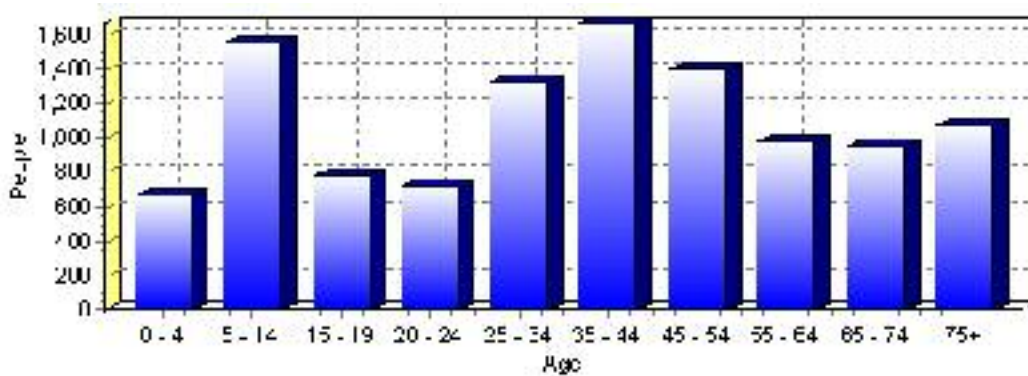
Total Population 1991-2001



Population by Age and Gender	1996 Male	1996 Female	1996 Total	2001 Male	2001 Female	2001 Total
Age 0 - 4	430	375	805	340	330	670
Age 5 - 14	835	815	1,650	805	750	1,555
Age 15 - 19	420	395	815	415	365	780
Age 20 - 24	335	330	665	365	355	720
Age 25 - 34	785	800	1,585	655	675	1,330
Age 35 - 44	740	815	1,555	795	875	1,670
Age 45 - 54	570	610	1,180	650	755	1,405
Age 55 - 64	380	445	825	480	505	985
Age 65 - 74	380	530	910	415	540	955
Age 75 and older	345	615	960	375	705	1,080
Total All Persons	5,230	5,730	10,960	5,295	5,860	11,155

Source: Statistics Canada 1996 & 2001 Census (numbers may not add up due to rounding)

Wetaskiwin Population by Age Group (2001)

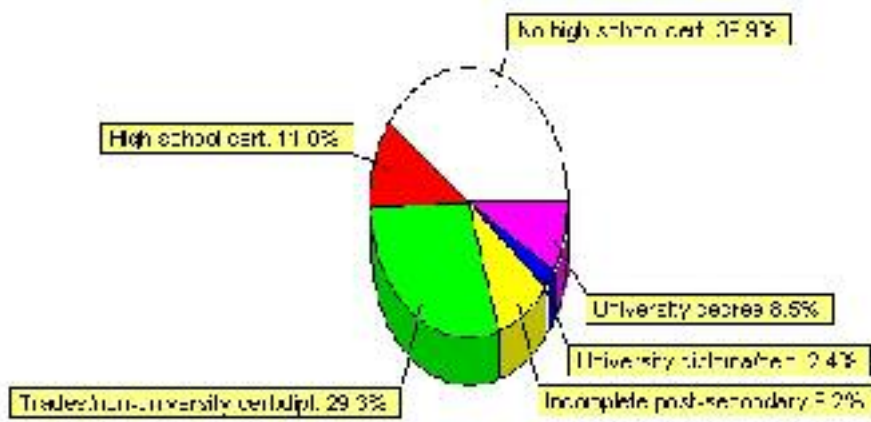


Education Statistics

Highest level of schooling for Population 20yrs and older	2001	%
People without high school certificates	3,115	39.88%
People with high school certificates	860	11.01%
People with trades or non-university certificate or diploma	2,290	29.32%
People with post-secondary education (not completed)	715	9.15%
People with university diploma/certificate	185	2.37%
People with university degree	660	8.45%
Total Population 20 years and older	7,810	100.00%

Source: Statistics Canada 2001 Census (numbers may not add up due to rounding)

Wetaskiwin Highest Level of Schooling 2001



Population with Post Secondary Qualifications	1996	%	2001	%
Agriculture and biological sciences	165	5.77%	180	5.74%
Commerce, management and business administration	495	17.31%	565	18.02%
Educational, recreational and counseling services	445	15.56%	390	12.44%
Engineering and applied science tech. and trades	790	27.62%	915	29.19%
Engineering and applied sciences	20	0.70%	25	0.80%
Fine and applied arts	145	5.07%	205	6.54%
Health professionals, science and technologies	375	13.11%	480	15.31%
Humanities and related fields	130	4.55%	130	4.15%
Mathematics and physical sciences	40	1.40%	35	1.12%
Social sciences and related fields	260	9.09%	190	6.06%
Other and/or no specialization	0	0.00%	10	0.32%
Total people with post secondary qualifications	2,860	100.00%	3,135	100.00%
Females with post-secondary qualifications	1,425	49.83%	1,630	51.99%
Males with post-secondary qualifications	1,435	50.17%	1,505	48.01%

Source: Statistics Canada 1996 & 2001 Census (numbers may not add up due to rounding)

Labour Force

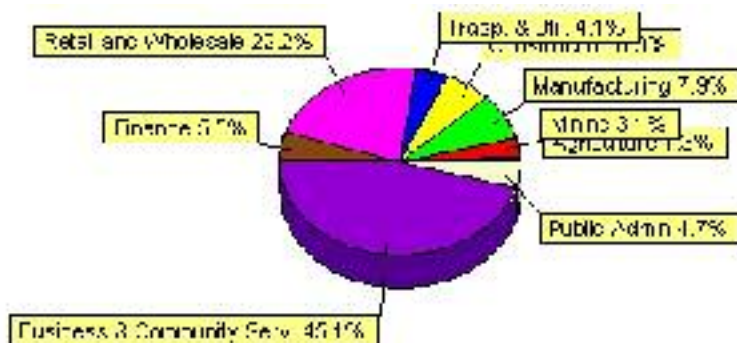
Labour force by activity	1996	2001
In the labour force, both sexes	5,230	5,520
Not in the labour force, both sexes	3,045	3,060
Total population 15 and over	8,275	8,580
Employed, both sexes	4,865	5,250
Unemployed, both sexes	360	270
Participation rate, both sexes	63.00%	64.00%
Unemployment rate, both sexes	6.00%	5.00%

Source: Statistics Canada 1996 & 2001 Census (numbers may not add up due to rounding)

Labour Force by Industry Division	1996	% of total	2001	% of total
Agriculture	175	3.41%	70	1.28%
Mining	110	2.15%	170	3.11%
Manufacturing	250	4.88%	430	7.88%
Construction	275	5.37%	345	6.32%
Transportation. & Utilities	290	5.66%	225	4.12%
Retail and Wholesale	1,355	26.44%	1,210	22.16%
Finance	205	4.00%	300	5.49%
Business & Community Services	2,025	39.51%	2,465	45.15%
Public Administration	270	5.27%	255	4.67%
Total All Industries	5,125	100.00%	5,460	100.00%

Source: Statistics Canada 1996 & 2001 Census (numbers may not add up due to rounding)

Wetaskiwin Labour Force By Industry - 2001



Labour Force by Major Occupational Groups	1996	%	2001	%
Management occupations	495	9.65%	595	10.89%
Business, Finances and administrative occupations	925	18.03%	720	13.17%
Natural and applied sciences and related occupations	65	1.27%	120	2.20%
Health occupations	220	4.29%	305	5.58%
Occupations in social science; education; government and religion	455	8.87%	505	9.24%
Occupations in art; culture; recreation and sport	105	2.05%	105	1.92%

Sales and service occupations	1,780	34.70%	1,615	29.55%
Trades; transport; equipment operators and related occupations	670	13.06%	1,090	19.95%
Occupations unique to primary industry	220	4.29%	210	3.84%
Occupations unique to processing; manufacturing and utilities	195	3.80%	205	3.75%
Occupations not elsewhere classified	105	2.05%	60	1.10%
Total - All Occupations (major groups)	5,130	100.00%	5,465	100.00%
Females - All Occupations	2,455	47.86%	2,615	47.85%
Males - All Occupations	2,675	52.14%	2,845	52.06%

Source: Statistics Canada 1996 & 2001 Census (numbers may not add up due to rounding)

Income

Family Income (Number of Families)	1996	%	2001	%
less than \$19,999	240	9.78%	360	15.13%
\$20,000 - \$39,999	850	34.62%	955	40.13%
\$40,000 - \$59,999	620	25.25%	760	31.93%
\$60,000 and over	745	30.35%	610	25.63%
Total number of families	2,455	100.00%	2,685	112.82%
Average family income	\$51,809		\$52,719	
Median family income	\$44,526		\$44,707	

Source: Statistics Canada 1996 & 2001 Census (numbers may not add up due to rounding)

Household Income (Number of Households)	1996	%	2001	%
less than \$19,999	1,180	28.10%	1,115	24.64%
\$20,000 - \$39,999	1,380	32.86%	1,415	31.27%
\$40,000 - \$59,999	835	19.88%	950	20.99%
\$60,000 and over	265	6.31%	1,050	23.20%
Total number of households	4,200	100.00%	4,525	100.00%
Average household income	\$40,587		\$44,118	
Median household income	\$32,376		\$35,449	

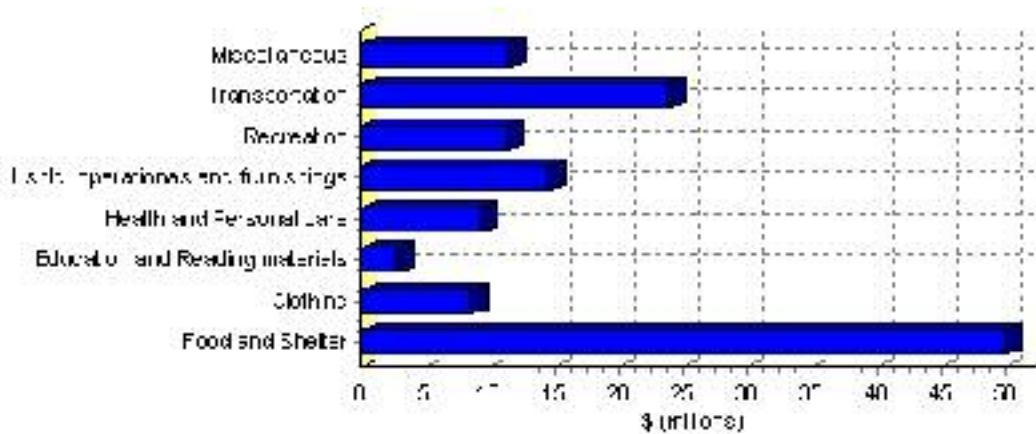
Source: Statistics Canada 1996 & 2001 Census (numbers may not add up due to rounding)

Family Expenditure

Expenditure Category	1992	% of total	1996	% of total
Food and Shelter	\$41,998,890	37.53%	\$49,987,458	37.91%
Clothing	\$7,547,060	6.74%	\$8,521,460	6.46%
Education and Reading materials	\$2,273,750	2.03%	\$2,868,976	2.18%
Health and Personal care	\$7,033,210	6.28%	\$9,252,698	7.02%
Hshld. operations and furnishings	\$12,275,350	10.97%	\$14,555,054	11.04%
Recreation	\$8,846,870	7.90%	\$11,336,918	8.60%
Transportation	\$22,942,630	20.50%	\$23,899,784	18.13%
Miscellaneous	\$8,954,680	8.00%	\$11,421,018	8.66%
Total Current Consumption	\$111,918,460	100.00%	\$131,843,366	100.00%
Total # of Households	3,980		4,204	
Average Consumption per Household	\$28,120		\$31,361	

Source: Statistics Canada Family Expenditure Survey 1992 & 1996 (numbers may not add up due to rounding).

Wetaskiwin Family Expenditures (1996)

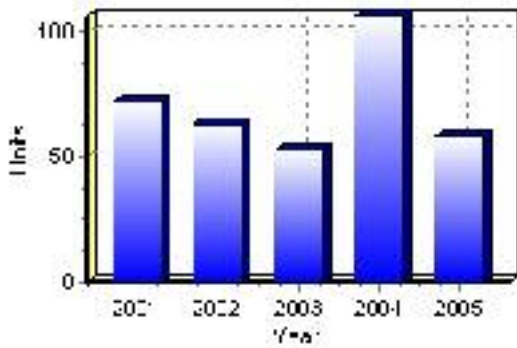


Building Permits

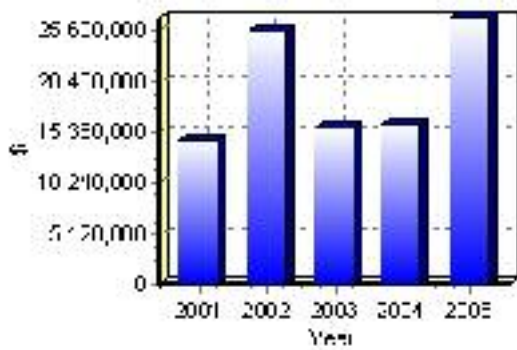
Total Building Permit Values	2001	2002	2003	2004	2005
Building Permits Value, Commercial	\$2,493,851	\$4,682,600	\$3,496,568	\$4,855,080	\$4,754,000
Building Permits Value, Industrial	\$455,000	\$517,400	\$762,000	\$89,000	\$13,915,000
Building Permits Value, Institutional	\$5,213,500	\$12,570,000	\$2,246,000	\$1,407,232	\$119,365
Building Permits Value, Residential	\$6,396,600	\$7,772,200	\$9,220,653	\$9,746,237	\$8,106,750
Building Permits Value, Total	\$14,558,951	\$25,542,200	\$15,725,221	\$16,097,549	\$26,895,115
Total Housing Starts	72	63	53	106	58

Source: Statistics Canada 2000-2004 Building Permits (numbers may not add up due to rounding)

Total Housing Starts



Value of Building Permits



Dwellings

Occupied Private Dwellings by Type	1996	% of total	2001	% of total
Apartments	805	19.17%	950	20.97%
Detached Duplexes	40	0.95%	20	0.44%
Movable Dwellings	140	3.33%	120	2.65%
Other single attached house	0	0.00%	25	0.55%
Row and semi-detached house	530	12.62%	570	12.58%
Single-detached house	2,680	63.81%	2,845	62.80%
Total number of occupied private dwellings	4,200	100.00%	4,530	100.00%
Private dwellings, owned	2,630	62.62%	2,730	60.26%
Private Dwellings, rented	1,575	37.50%	1,795	39.62%

Source: Statistics Canada 1996 & 2001 Census (numbers may not add up due to rounding)

Private Dwellings by Period of Construction	# of Dwellings	% of total
Period of construction, before 1946	510	11.30%
Period of construction, 1946 - 1960	485	10.74%
Period of construction, 1961 - 1970	865	19.16%
Period of construction, 1971 - 1980	1,260	27.91%
Period of construction, 1981 - 1990	890	19.71%
Period of construction, 1991 - 2001	505	11.18%
Total number of private dwellings constructed	4,515	100.00%

Source: Statistics Canada 2001 Census (numbers may not add up due to rounding)

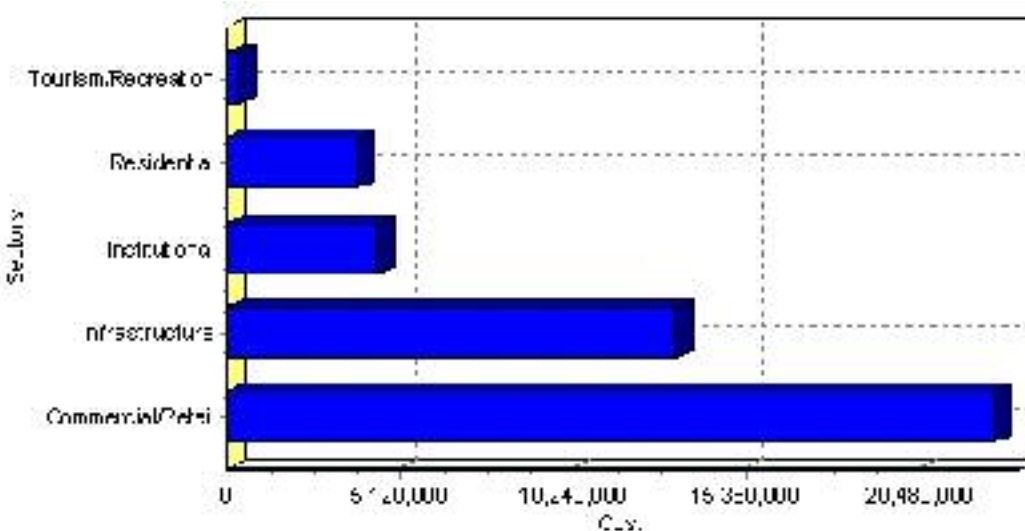
Projects

Summary of Projects in Wetaskiwin as of September 2006

Project Sector	Number of Projects	Project Cost
Commercial/Retail	8	\$22,690,000
Infrastructure	8	\$13,257,950
Institutional	3	\$4,438,000
Residential	3	\$3,874,000
Tourism/Recreation	2	\$352,000
Total	24	\$44,611,950

This inventory lists projects in Alberta that have recently been completed, are under construction, or are proposed to start construction. Not all projects are listed due to reasons of confidentiality and/or due to information not being available at the time of printing. Project data is obtained from public information sources, where possible, this data has been verified with the project proponent/developer, users of the Inventory may wish to confirm project data with the proponent/developer. The inventory does not breakdown project expenditures by any given year. The cost of a project is the value of expenditures expected over all phases of project construction, which may span over two or more years. Cost of projects listed in the Inventory are estimated values only. Source: Alberta Economic Development, 2004.

Value of Projects by Sector (as of September 2006)



Project Status	Number of Projects	Project Cost
Announced	12	\$11,199,480
Nearing Completion	2	\$14,600,000
Proposed	4	\$11,400,000
Under Construction	6	\$7,412,470
Total	24	\$44,611,950

This inventory lists projects in Alberta that have recently been completed, are under construction, or are proposed to start construction. Not all projects are listed due to reasons of confidentiality and/or due to information not being available at the time of printing. Project data is obtained from public information sources, where possible, this data has been verified with the project proponent/developer, users of the Inventory may wish to confirm project data with the proponent/developer. The inventory does not breakdown project expenditures by any given year. The cost of a project is the value of expenditures expected over all phases of project construction, which may span over two or more years. Cost of projects listed in the Inventory are estimated values only. Source: Alberta Economic Development, 2004.

Largest Projects in Wetaskiwin as of September 2006

Company Name	Project Description	Project Location	Project Cost	Construction Schedule	Status
Home Hardware	Distribution Centre Expansion	Wetaskiwin	\$10,100,000	2006-2006	Nearing Completion
City of Wetaskiwin	WATERMAIN / SANITARY SEWER TRUNK UPGRADES, GARDEN MEADOWS DRIVE / PARKSIDE DR	Wetaskiwin	\$4,600,000	-	Proposed
Canadian Tire	New Store	Wetaskiwin	\$4,500,000	2006-2006	Nearing Completion
City of Wetaskiwin / East Side Development Inc.	Courthouse Restoration and Conversion into City Hall	Wetaskiwin	\$4,000,000	2006-2007	Under Construction
Loblaws Properties West Inc.	Extra Foods Grocery Store and Gas Bar	Wetaskiwin	\$3,200,000	2006-2006	Announced
Josan Properties Ltd.	MULTI-FAMILY DEVELOPMENT	Wetaskiwin	\$3,000,000	-	Proposed
Speth Drilling	OFFICE AND SHOP	Wetaskiwin	\$2,400,000	2006-2006	Under Construction
Continuum Health Care Holdings Ltd / Eldercare (Wetaskiwin) Ltd.	Supportive Living Units for Seniors	Wetaskiwin	\$2,200,000	-	Proposed
City Of Wetaskiwin	Paving	Wetaskiwin	\$1,950,480	2006-2007	Announced
Wetaskiwin Fire Protection Zone 2 Society	Two Fire Stations	Wetaskiwin / Wetaskiwin County	\$1,600,000	-	Proposed

Disclaimer: Information in this profile has been provided from a variety of external sources. Although every effort has been made to ensure the accuracy, currency and reliability of the content and data, AlbertaFirst.com Ltd. accepts no responsibility in this regard.

© AlbertaFirst.com Ltd., 2006.