

# Crossfield

[www.crossfieldalberta.com](http://www.crossfieldalberta.com)

## Welcome

Welcome to our community. [Town of Crossfield](#), We hope the information contained within this profile is useful. If additional information is required, please contact our representative from the "Key Contacts" section.

E-mail: [town@crossfieldalberta.com](mailto:town@crossfieldalberta.com)

## Area Overview

The Town of Crossfield is located 50 kilometres north of Calgary on Highway 2. It was established nearly one hundred years ago and derived its name from the chief surveyor for the Canadian Pacific Railway, Mr. Crossfield.

The people who settled in Crossfield represented a wide variety of nationalities. While this has not changed over the years, a bonding amongst the nationalities has occurred. Friendliness and pride mixed with initiative, cooperation and perseverance shaped the first community, and the same traditions endure today. The people of the community continue to show a willingness to participate in activities and provide a diversity of services in a progressive community, ensuring that Crossfield will be contributing to the mainstream of Alberta life in the years to come.

Crossfield offers serviced industrial land and easy access to Alberta's vibrant business community. For the family, the town offers affordable living in a pleasant rural environment.

## Community Services

### Municipal

#### Town of Crossfield

1412 Railway Street, P.O. Box 500

Crossfield, Alberta

T0M 0S0

Tel: 403-946-5565

Fax: 403-946-4523

#### Town Office

Municipal Library

### Provincial

Transportation and Utilities

### Federal



## Community Lifestyle

### Recreation

Local recreation facilities include baseball diamonds, tennis courts, 4 playgrounds, the Crossfield Curling Rink [4 sheets], Pete Knight Memorial Arena [artificial ice], the Community Centre, and the Senior Citizens Drop In Centre.

### Community Organizations

Local recreation and community organizations include the 4-H Club, Royal Purple, Elks, Pioneer Girls, Lions/Lioness Clubs, Agricultural Society, Rebekahs, Masons, Order of Eastern Star, Explorers, Boy Scouts-Cubs, and the Royal Canadian Legion.

### Religious Facilities

Crossfield United Church  
Crossfield Baptist Church

### Special Annual Events/Attractions

Ice Carnival -- March  
Pete Knight Days -- June  
Crossfield Farmers' Market -- May to September Thursday Evenings 7-9p.m.  
Christmas Farmers Market - November  
Christmas Tree Lighting - December

### Hospitality

#### Accommodation

Oliver Hotel - 946-5600  
Crossfield Country Inn - 946-9900

### Restaurants

Enjoy Garden- Chinese & Western Food  
McCool Street Bar and Grill  
Side Street Cafe- good home cooked meals open for lunch daily  
Humpty's - open 24 hours a day

## Economic Base

The main economic base of the Crossfield area is agriculture, agricultural services and natural gas processing.

Fertile soils, timely rains and long hours of sunshine mean a bountiful harvest of field crops for area farmers. Wheat, barley, oats, and canola are a few of the crops that grace summer fields. Diversified agricultural pursuits vary, from straight grain farming operations to intensive production of pork, dairy products, poultry and beef cattle, which contributes to Alberta's renowned food production.

The development of gas and oil reserves continues to prompt many firms to supply and service the oil patch. The proximity to several refineries and other oil and gas related industries provides substantial employment opportunities for many area residents.

The town's location relative to highway, rail and marketing centres in south-central Alberta makes Crossfield a major consideration for industry in relocation. The diversity of resources in the area is worthy of investigation by investors and industry.

## Economic Facts

**Major manufactured goods include:** steel columns, beams, and joists; furniture; banking machines; oilfield and industrial equipment; and expandable polystyrene and expanded polystyrene products.

### Major Businesses Products/Services

A S 4 Steel Industries Ltd. Steel columns, beams & joists

Plasti-Fab Ltd. Expandable polystyrene products

Unitrade N/A Palliser Lumber

Maxfield - hydrous, propane vessels

Wingenback - ABM machines

Nu Gro - Fertilizer

### Financial Institutions

Canadian Imperial Bank of Commerce

Alberta Treasury Branch

Mountain View Credit Union

## Education

Crossfield is part of the Rocky View School Division #41, headquartered in Calgary [Tel: 403-291-6313].

### Daycare/Nursery

#### Public

Schools in Crossfield include Crossfield Elementary School [K-5] and W.G. Murdoch Junior and Senior High School [6-12].

#### Separate

N/A

#### Private

N/A



## Emergency Services

### Fire Protection

Crossfield is served by a local 30-member volunteer fire department [Call 911 for emergencies].

### Police Services

Crossfield is served by the Airdrie detachment of the Royal Canadian Mounted Police [RCMP] [Call 911 for emergencies].

### Ambulance Services

The ambulance division of the Emergency Services Department, based in Airdrie, provides service to Crossfield and the surrounding area [Call 911 for emergencies]. The service is designated as an Advanced Life Support level with an 8-minute response time in its service area.

## Health Care

The Mountain View Health Care Centre, based in Didsbury, serves the residents of Crossfield. It provides 24-hour medical, nursing, emergency, obstetrical and pediatric service as well as elective surgery. The 135-bed hospital employs 225 health care professionals, has acute care beds, 60 auxiliary care beds and 40 nursing home beds.

A full range of other medical services, including medical clinics, medical laboratories, dentists, chiropractors, optometrists, physiotherapists, a community health centre and home-based health services, etc., are available in nearby Airdrie.

## Key Contacts for Business Development

### Municipal

Town of Crossfield  
1412 Railway Street  
946-5565 Fax: 946-4523  
P.O. Box 500

Crossfield, Alberta  
T0M 0S0  
[town@crossfieldalberta.com](mailto:town@crossfieldalberta.com)

Mike Budd (*Mayor*), Norma Lang  
(*Councillor*), Kevin Wallace (*Councillor*), Joel Steenhardt (*Councillor*), Jacky Vang (*Councillor*)

Cheryl Skelly  
*Chief Administrative Officer*  
[cheryls@crossfieldalberta.com](mailto:cheryls@crossfieldalberta.com)

Merel Jarvis  
Administrative Assistant  
[merelj@crossfieldalberta.com](mailto:merelj@crossfieldalberta.com)

### **Provincial (Updated May 2006)**

Walter Valentini  
*Regional Manager*  
Alberta Economic Development  
#300, 639 - 5th Avenue, SW  
Calgary, Alberta  
T2P 0M9  
Tel: 403-297-8920  
Fax: 403-297-6168  
E-Mail: [walter.valentini@gov.ab.ca](mailto:walter.valentini@gov.ab.ca)  
E-Mail: [dianne.fitzsimmons@gov.ab.ca](mailto:dianne.fitzsimmons@gov.ab.ca)

Dr. Ted Morton  
*Member of the Legislative Assembly [MLA]*  
Airdrie-Rocky View Constituency

Constituency Office  
6, 160 Maclaurin Drive  
Calgary  
T3Z 3S4  
Phone: (403) 216-2221  
Toll Free: 1-866-843-4314  
Fax: (403) 216-2225  
[foothills.rockyview@assembly.ab.ca](mailto:foothills.rockyview@assembly.ab.ca)

Legislature Office  
723 Legislature Annex  
9718 107 Street  
Edmonton  
T5K 1E4  
Phone: (780) 422-2768  
Fax: (780) 422-1671

### **Federal (Updated May 2006)**

Myron Thompson

Member of Parliament [MP]  
Wild Rose Constituency

#### Parliamentary Address

House of Commons  
Ottawa, Ontario  
K1A 0A6  
Telephone: (613) 996-5152  
Fax: (613) 947-4601  
E-Mail: [Thompson.M@parl.gc.ca](mailto:Thompson.M@parl.gc.ca)

#### Constituency Address

213 Main Street, Bay 3, P.O. Box 3816  
Airdrie, Alberta  
T4B 2B9  
Telephone: (403) 948-5103  
Fax: (403) 948-0879  
TTY:  
E-Mail: [ThompM1@parl.gc.ca](mailto:ThompM1@parl.gc.ca)

## Location

The Town of Crossfield is located in the Municipal District of Rockyview #44, in central Alberta. It is just 50 km north of Calgary.

### Crossfield's Proximity to Other Locations

---

Driving Distance from Crossfield	km	miles	Time Required
Calgary (city centre)	43	27	34 minutes
Calgary International Airport	39	24	26 minutes
Edmonton, Alberta	270	168	2 hours, 46 minutes
Vancouver, British Columbia	1015	631	11 hours, 46 minutes
Toronto, Ontario	3445	2141	35 hours, 36 minutes
United States Border (Coutts, Alberta crossing)	371	231	3 hours, 53 minutes

---

It is important to note that time required is calculated based on 'ideal' traffic and weather conditions.



**Alberta Map**



**Crossfield Location Map**

## Post Secondary Education

Olds College, based in Olds, and post-secondary educational institutions in Calgary, such as the Southern Alberta Institute of Technology [SAIT], the University of Calgary and Mount Royal Colleges are within a 1-hour drive.

## Taxation

---

	<u>Residential/Farmland</u>	<u>Non-Residential</u>
<b>2005</b>		
Municipal Tax Rate	6.4600	6.4600
Education - Alberta School Foundation Fund Tax Rate	4.2400	6.3700
Education Opted Out Tax Rate	4.2400	6.3700
Seniors Lodge Accommodation Tax Rate	.0700	.0700

---

## Transportation

### Air Service

The nearest airport is in Airdrie, 16 km south of Crossfield. The nearest commercial and air freight service is at Calgary International Airport, 29 km south.

### Rail Service

Crossfield is served by a Canadian Pacific Railway main line. Spur trackage is available.

### Highways

Connecting highways are Highway 2 to Edmonton [north] and Calgary [south] and Highway 2A.

### Trucking Firms

Crossfield Transport

### Bus Services

Greyhound Bus Lines offers regularly scheduled inter-community service.

### Couriers and Taxis

Crossfield is serviced by several major Canadian courier companies.

## Utilities

### Electrical Power

EPCOR  
 Box 2300  
 Calgary, AB  
 T2P 5H9  
 Tel: 403-310-4300

### Natural Gas

Direct Energy  
 PO Box 2427  
 Edmonton, AB T5J 2R4  
 Phone: Calgary and Local Areas - 245-7838  
 Website: [www.DirectEnergyRegulatedServices.com](http://www.DirectEnergyRegulatedServices.com)

### Telephone

Telus Communications.  
 Calgary, Alberta

Tel: 403-310-2255

**Water Supply**

The source of water is the Anthony Henday Water Treatment Plant. The usage rate is a minimum \$37.50 every two months for 5,000 gallons of water. There is a charge of \$7.50 per 1,000 gallons for amounts greater than 5,000 gallons and half of that is charged for sewer.

**Waste Management**

Sewage treatment is provided by lagoons.

There is a \$27.00 charge for garbage pick-up, which is included in the \$83.25 water supply fee.



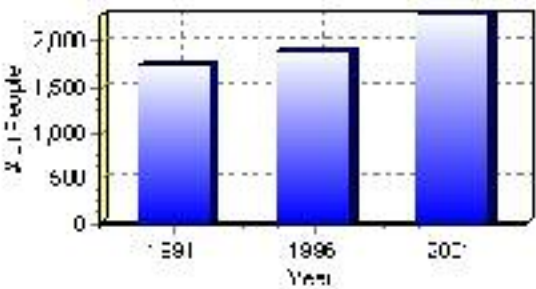
# Population

## Total Population

Population 2004*	2,288
Population 2003*	2,288
Population 2002*	2,288
Population 2001**	2,390
Population 2000*	2,003
Population 1996**	1,899
Population 1991**	1,739
Population % change 1991-1996	8.43%
Population % change 1996-2001	17.00%

\* Source: Official Population List, Alberta Municipal Affairs  
\*\* Source: Statistics Canada 1991, 1996, & 2001 Census

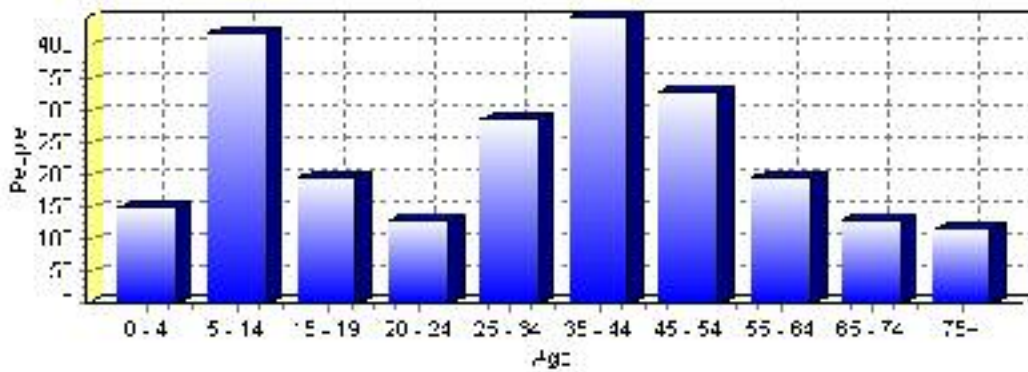
## Total Population 1991-2001



Population by Age and Gender	1996 Male	1996 Female	1996 Total	2001 Male	2001 Female	2001 Total
Age 0 - 4	65	55	120	85	65	150
Age 5 - 14	195	200	395	200	220	420
Age 15 - 19	100	65	165	95	100	195
Age 20 - 24	50	30	80	75	55	130
Age 25 - 34	95	135	230	135	150	285
Age 35 - 44	190	195	385	215	230	445
Age 45 - 54	110	95	205	180	150	330
Age 55 - 64	65	60	125	100	95	195
Age 65 - 74	35	35	70	70	60	130
Age 75 and older	40	75	115	35	80	115
Total All Persons	955	945	1,900	1,190	1,200	2,390

Source: Statistics Canada 1996 & 2001 Census (numbers may not add up due to rounding)

### Crossfield Population by Age Group (2001)

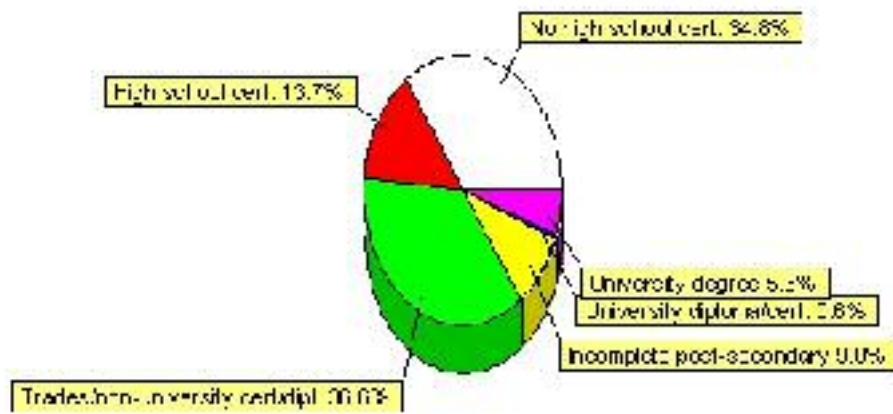


# Education Statistics

Highest level of schooling for Population 20yrs and older	2001	%
People without high school certificates	560	34.78%
People with high school certificates	220	13.66%
People with trades or non-university certificate or diploma	590	36.65%
People with post-secondary education (not completed)	145	9.01%
People with university diploma/certificate	10	0.62%
People with university degree	85	5.28%
Total Population 20 years and older	1,610	100.00%

Source: Statistics Canada 2001 Census (numbers may not add up due to rounding)

## Crossfield Highest Level of Schooling 2001



Population with Post Secondary Qualifications	1996	%	2001	%
Agriculture and biological sciences	20	3.74%	10	1.46%
Commerce, management and business administration	155	28.97%	160	23.36%
Educational, recreational and counseling services	35	6.54%	20	2.92%
Engineering and applied science tech. and trades	190	35.51%	325	47.45%
Engineering and applied sciences	15	2.80%	0	0.00%
Fine and applied arts	0	0.00%	50	7.30%
Health professionals, science and technologies	45	8.41%	40	5.84%
Humanities and related fields	10	1.87%	15	2.19%
Mathematics and physical sciences	0	0.00%	10	1.46%
Social sciences and related fields	45	8.41%	35	5.11%
Other and/or no specialization	0	0.00%	0	0.00%
Total people with post secondary qualifications	535	100.00%	685	100.00%
Females with post-secondary qualifications	230	42.99%	325	47.45%
Males with post-secondary qualifications	305	57.01%	360	52.55%

Source: Statistics Canada 1996 & 2001 Census (numbers may not add up due to rounding)

## Labour Force

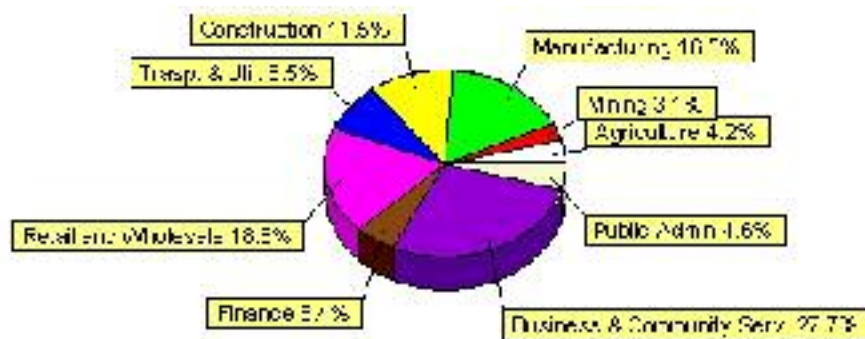
Labour force by activity	1996	2001
In the labour force, both sexes	980	1,305
Not in the labour force, both sexes	390	480
Total population 15 and over	1,370	1,790
Employed, both sexes	910	1,270
Unemployed, both sexes	70	35
Participation rate, both sexes	71.00%	73.00%
Unemployment rate, both sexes	7.00%	3.00%

Source: Statistics Canada 1996 & 2001 Census (numbers may not add up due to rounding)

Labour Force by Industry Division	1996	% of total	2001	% of total
Agriculture	35	3.57%	55	4.23%
Mining	45	4.59%	40	3.08%
Manufacturing	145	14.80%	215	16.54%
Construction	60	6.12%	150	11.54%
Transportation. & Utilities	120	12.24%	110	8.46%
Retail and Wholesale	265	27.04%	245	18.85%
Finance	55	5.61%	70	5.38%
Business & Community Services	190	19.39%	360	27.69%
Public Administration	30	3.06%	60	4.62%
Total All Industries	980	100.00%	1,300	100.00%

Source: Statistics Canada 1996 & 2001 Census (numbers may not add up due to rounding)

### Crossfield Labour Force By Industry - 2001



Labour Force by Major Occupational Groups	1996	%	2001	%
Management occupations	110	11.22%	120	9.23%
Business, Finances and administrative occupations	215	21.94%	250	19.23%
Natural and applied sciences and related occupations	25	2.55%	85	6.54%
Health occupations	35	3.57%	35	2.69%
Occupations in social science; education; government and religion	20	2.04%	50	3.85%
Occupations in art; culture; recreation and sport	20	2.04%	10	0.77%

Sales and service occupations	240	24.49%	265	20.38%
Trades; transport; equipment operators and related occupations	190	19.39%	310	23.85%
Occupations unique to primary industry	45	4.59%	90	6.92%
Occupations unique to processing; manufacturing and utilities	80	8.16%	85	6.54%
Occupations not elsewhere classified	0	0.00%	10	0.77%
Total - All Occupations (major groups)	980	100.00%	1,300	100.00%
Females - All Occupations	450	45.92%	560	43.08%
Males - All Occupations	530	54.08%	740	56.92%

Source: Statistics Canada 1996 & 2001 Census (numbers may not add up due to rounding)

---

## Income

<b>Family Income (Number of Families)</b>	<b>1996</b>	<b>%</b>	<b>2001</b>	<b>%</b>
less than \$19,999	25	5.62%	45	7.83%
\$20,000 - \$39,999	85	19.10%	90	15.65%
\$40,000 - \$59,999	95	21.35%	190	33.04%
\$60,000 and over	240	53.93%	265	46.09%
Total number of families	445	100.00%	590	102.61%
Average family income	\$63,360		\$70,246	
Median family income	\$62,796		\$62,895	

Source: Statistics Canada 1996 & 2001 Census (numbers may not add up due to rounding)

<b>Household Income (Number of Households)</b>	<b>1996</b>	<b>%</b>	<b>2001</b>	<b>%</b>
less than \$19,999	125	20.33%	110	13.75%
\$20,000 - \$39,999	100	16.26%	100	12.50%
\$40,000 - \$59,999	140	22.76%	220	27.50%
\$60,000 and over	55	8.94%	380	47.50%
Total number of households	615	100.00%	800	100.00%
Average household income	\$54,626		\$66,308	
Median household income	\$50,190		\$59,016	

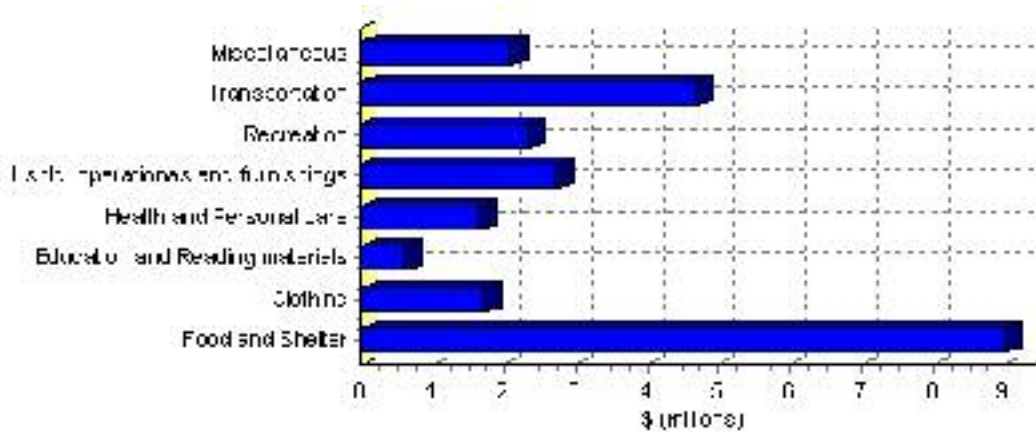
Source: Statistics Canada 1996 & 2001 Census (numbers may not add up due to rounding)

# Family Expenditure

Expenditure Category	1992	% of total	1996	% of total
Food and Shelter	\$6,812,295	36.49%	\$9,022,100	36.19%
Clothing	\$1,330,475	7.13%	\$1,724,533	6.92%
Education and Reading materials	\$436,985	2.34%	\$603,295	2.42%
Health and Personal care	\$1,145,195	6.13%	\$1,660,577	6.66%
Hshld. operations and furnishings	\$2,070,560	11.09%	\$2,753,218	11.04%
Recreation	\$1,637,795	8.77%	\$2,358,182	9.46%
Transportation	\$3,799,295	20.35%	\$4,698,312	18.85%
Miscellaneous	\$1,434,310	7.68%	\$2,109,481	8.46%
Total Current Consumption	\$18,670,605	100.00%	\$24,929,698	100.00%
Total # of Households	560		612	
Average Consumption per Household	\$33,340		\$40,735	

Source: Statistics Canada Family Expenditure Survey 1992 & 1996 (numbers may not add up due to rounding).

## Crossfield Family Expenditures (1996)

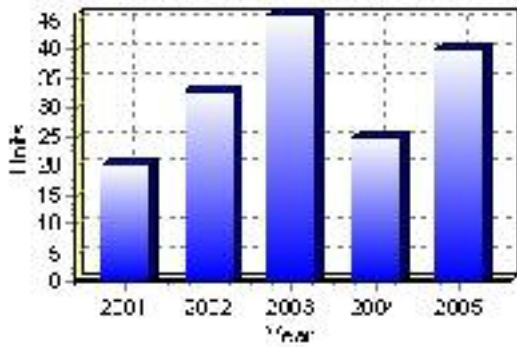


# Building Permits

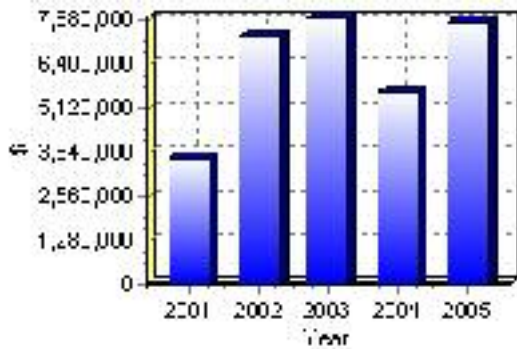
Total Building Permit Values	2001	2002	2003	2004	2005
Building Permits Value, Commercial	\$828,000	\$1,321,000	\$1,089,000	\$847,000	\$414,000
Building Permits Value, Industrial	\$411,000	\$855,000	\$40,000	\$340,000	\$1,150,000
Building Permits Value, Institutional	\$0	\$0	\$0	\$0	\$4,000
Building Permits Value, Residential	\$2,418,000	\$5,030,000	\$6,604,000	\$4,403,000	\$6,036,000
Building Permits Value, Total	\$3,657,000	\$7,206,000	\$7,733,000	\$5,590,000	\$7,604,000
Total Housing Starts	20	33	46	25	40

Source: Statistics Canada 2000-2004 Building Permits (numbers may not add up due to rounding)

## Total Housing Starts



## Value of Building Permits





## Dwellings

<b>Occupied Private Dwellings by Type</b>	<b>1996</b>	<b>% of total</b>	<b>2001</b>	<b>% of total</b>
Apartments	45	7.32%	10	1.25%
Detached Duplexes	10	1.63%	5	0.63%
Movable Dwellings	15	2.44%	75	9.38%
Other single attached house	0	0.00%	0	0.00%
Row and semi-detached house	25	4.07%	70	8.75%
Single-detached house	515	83.74%	640	80.00%
Total number of occupied private dwellings	615	100.00%	800	100.00%
Private dwellings, owned	525	85.37%	725	90.63%
Private Dwellings, rented	85	13.82%	75	9.38%

Source: Statistics Canada 1996 & 2001 Census (numbers may not add up due to rounding)

<b>Private Dwellings by Period of Construction</b>	<b># of Dwellings</b>	<b>% of total</b>
Period of construction, before 1946	80	10.13%
Period of construction, 1946 - 1960	35	4.43%
Period of construction, 1961 - 1970	20	2.53%
Period of construction, 1971 - 1980	200	25.32%
Period of construction, 1981 - 1990	180	22.78%
Period of construction, 1991 - 2001	275	34.81%
Total number of private dwellings constructed	790	100.00%

Source: Statistics Canada 2001 Census (numbers may not add up due to rounding)

Disclaimer: Information in this profile has been provided from a variety of external sources. Although every effort has been made to ensure the accuracy, currency and reliability of the content and data, AlbertaFirst.com Ltd. accepts no responsibility in this regard.

© AlbertaFirst.com Ltd., 2006.