

Dewberry

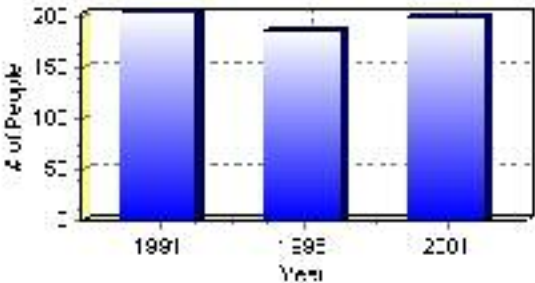
Population

Total Population

Population 2004*	200
Population 2003*	200
Population 2002*	200
Population 2001**	200
Population 2000*	185
Population 1996**	185
Population 1991**	203
Population % change 1991-1996	-9.73%
Population % change 1996-2001	7.50%

* Source: Official Population List, Alberta Municipal Affairs
** Source: Statistics Canada 1991, 1996, & 2001 Census

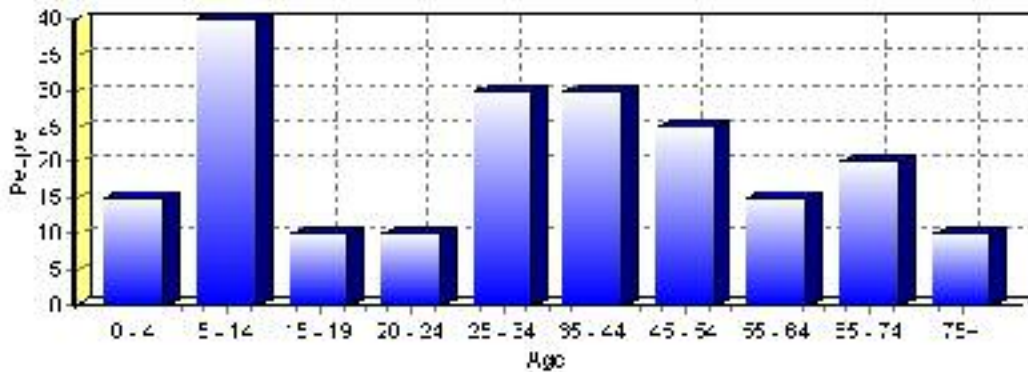
Total Population 1991-2001



Population by Age and Gender	1996 Male	1996 Female	1996 Total	2001 Male	2001 Female	2001 Total
Age 0 - 4	10	5	15	10	5	15
Age 5 - 14	15	15	30	25	15	40
Age 15 - 19	5	5	10	5	5	10
Age 20 - 24	5	0	5	5	5	10
Age 25 - 34	10	15	25	15	15	30
Age 35 - 44	15	10	25	15	15	30
Age 45 - 54	5	5	10	15	10	25
Age 55 - 64	5	5	10	5	10	15
Age 65 - 74	10	10	20	10	10	20
Age 75 and older	10	5	15	0	10	10
Total All Persons	90	95	185	105	95	200

Source: Statistics Canada 1996 & 2001 Census (numbers may not add up due to rounding)

Dewberry Population by Age Group (2001)

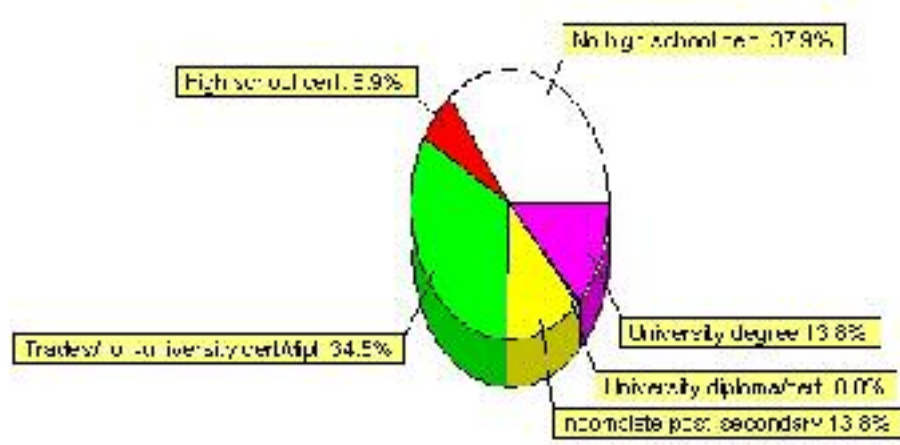


Education Statistics

Highest level of schooling for Population 20yrs and older	2001	%
People without high school certificates	55	37.93%
People with high school certificates	10	6.90%
People with trades or non-university certificate or diploma	50	34.48%
People with post-secondary education (not completed)	20	13.79%
People with university diploma/certificate	0	0.00%
People with university degree	20	13.79%
Total Population 20 years and older	145	100.00%

Source: Statistics Canada 2001 Census (numbers may not add up due to rounding)

Dewberry Highest Level of Schooling 2001



Population with Post Secondary Qualifications	1996	%	2001	%
Agriculture and biological sciences	0	0.00%	10	15.38%
Commerce, management and business administration	20	30.77%	20	30.77%
Educational, recreational and counseling services	10	15.38%	0	0.00%
Engineering and applied science tech. and trades	50	76.92%	15	23.08%
Engineering and applied sciences	0	0.00%	10	15.38%
Fine and applied arts	0	0.00%	0	0.00%
Health professionals, science and technologies	0	0.00%	15	23.08%
Humanities and related fields	0	0.00%	0	0.00%
Mathematics and physical sciences	0	0.00%	0	0.00%
Social sciences and related fields	0	0.00%	0	0.00%
Other and/or no specialization	0	0.00%	0	0.00%
Total people with post secondary qualifications	65	100.00%	65	100.00%
Females with post-secondary qualifications	20	30.77%	30	46.15%
Males with post-secondary qualifications	45	69.23%	35	53.85%

Source: Statistics Canada 1996 & 2001 Census (numbers may not add up due to rounding)

Labour Force

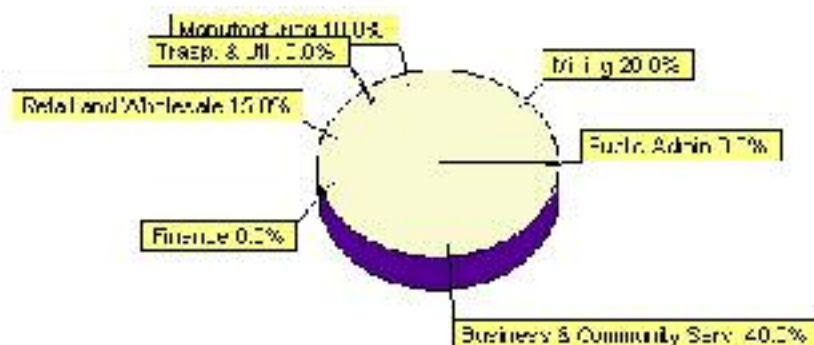
Labour force by activity	1996	2001
In the labour force, both sexes	80	100
Not in the labour force, both sexes	75	65
Total population 15 and over	150	165
Employed, both sexes	75	105
Unemployed, both sexes	10	0
Participation rate, both sexes	53.00%	61.00%
Unemployment rate, both sexes	12.00%	0.00%

Source: Statistics Canada 1996 & 2001 Census (numbers may not add up due to rounding)

Labour Force by Industry Division	1996	% of total	2001	% of total
Agriculture	0	0.00%	0	0.00%
Mining	0	0.00%	20	20.00%
Manufacturing	0	0.00%	10	10.00%
Construction	15	20.00%	0	0.00%
Transportation. & Utilities	20	26.67%	0	0.00%
Retail and Wholesale	15	20.00%	15	15.00%
Finance	0	0.00%	0	0.00%
Business & Community Services	15	20.00%	40	40.00%
Public Administration	0	0.00%	0	0.00%
Total All Industries	75	100.00%	100	100.00%

Source: Statistics Canada 1996 & 2001 Census (numbers may not add up due to rounding)

Dewberry Labour Force By Industry - 2001



Labour Force by Major Occupational Groups	1996	%	2001	%
Management occupations	15	18.75%	10	10.00%
Business, Finances and administrative occupations	0	0.00%	0	0.00%
Natural and applied sciences and related occupations	10	12.50%	0	0.00%
Health occupations	0	0.00%	20	20.00%
Occupations in social science; education; government and religion	0	0.00%	0	0.00%
Occupations in art; culture; recreation and sport	0	0.00%	0	0.00%

Sales and service occupations	25	31.25%	35	35.00%
Trades; transport; equipment operators and related occupations	20	25.00%	10	10.00%
Occupations unique to primary industry	0	0.00%	10	10.00%
Occupations unique to processing; manufacturing and utilities	0	0.00%	10	10.00%
Occupations not elsewhere classified	0	0.00%	0	0.00%
Total - All Occupations (major groups)	80	100.00%	100	100.00%
Females - All Occupations	25	31.25%	45	45.00%
Males - All Occupations	55	68.75%	55	55.00%

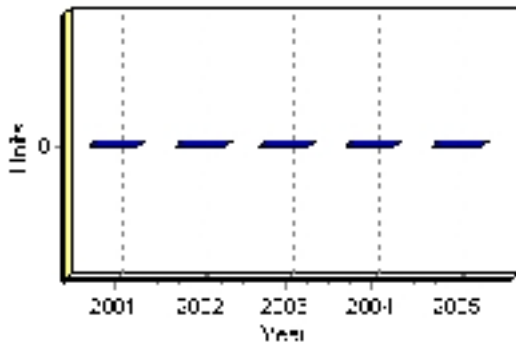
Source: Statistics Canada 1996 & 2001 Census (numbers may not add up due to rounding)

Building Permits

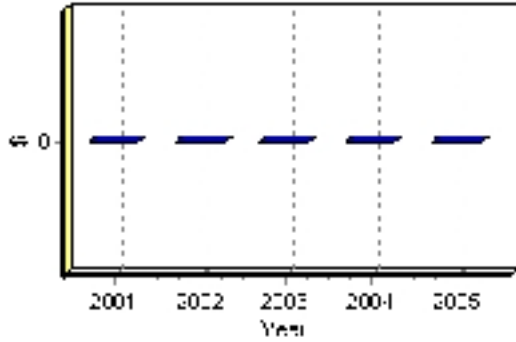
Total Building Permit Values	2001	2002	2003	2004	2005
Building Permits Value, Commercial	\$0	\$0	\$0	\$0	\$0
Building Permits Value, Industrial	\$0	\$0	\$0	\$0	\$0
Building Permits Value, Institutional	\$0	\$0	\$0	\$0	\$0
Building Permits Value, Residential	\$0	\$0	\$0	\$0	\$0
Building Permits Value, Total	\$0	\$0	\$0	\$0	\$0
Total Housing Starts	0	0	0	0	0

Source: Statistics Canada 2000-2004 Building Permits (numbers may not add up due to rounding)

Total Housing Starts



Value of Building Permits



Dwellings

Occupied Private Dwellings by Type	1996	% of total	2001	% of total
Apartments	0	0.00%	0	0.00%
Detached Duplexes	0	0.00%	0	0.00%
Movable Dwellings	10	11.76%	5	5.88%
Other single attached house	0	0.00%	0	0.00%
Row and semi-detached house	0	0.00%	5	5.88%
Single-detached house	70	82.35%	75	88.24%
Total number of occupied private dwellings	85	100.00%	85	100.00%
Private dwellings, owned	50	58.82%	55	64.71%
Private Dwellings, rented	35	41.18%	25	29.41%

Source: Statistics Canada 1996 & 2001 Census (numbers may not add up due to rounding)

Private Dwellings by Period of Construction	# of Dwellings	% of total
Period of construction, before 1946	15	17.65%
Period of construction, 1946 - 1960	10	11.76%
Period of construction, 1961 - 1970	0	0.00%
Period of construction, 1971 - 1980	20	23.53%
Period of construction, 1981 - 1990	25	29.41%
Period of construction, 1991 - 2001	15	17.65%
Total number of private dwellings constructed	85	100.00%

Source: Statistics Canada 2001 Census (numbers may not add up due to rounding)

Disclaimer: Information in this profile has been provided from a variety of external sources. Although every effort has been made to ensure the accuracy, currency and reliability of the content and data, AlbertaFirst.com Ltd. accepts no responsibility in this regard.

© AlbertaFirst.com Ltd., 2006.