

# Bonnyville

[www.town.bonnyville.ab.ca](http://www.town.bonnyville.ab.ca)

## Welcome

Welcome to our beautiful community located 250 km east of Edmonton with a population of 5,896, situated on Jessie Lake, a natural wetlands and home to 200 bird species including ducks, geese, pelicans, blue herons, grebes, cranes, and many others.

Enjoy the leisurely walk along Jessie Trail, stop at the viewing stands and information stations, and take in the entire panoramic view while birdwatching.

The **Town of Bonnyville**, offers a variety of other recreational and leisure opportunities for people of all ages. The Bonnyville Golf and Country Club includes 18 scenic holes, practice range, pro shop, restaurant and lounge. We have an indoor swimming pool, the R.J. Lalonde Arena, bowling alley, curling club, cultural centre with a theatre and stage, a public library, a district historical museum, numerous playgrounds and parks, the Snowdusters Snowmobile Club, a skateboard park, and a Parent Child Centre which houses pre-school programs and a family resource centre.

Bonnyville is located amidst a dozen lakes teeming with a variety of sport fish. Swim, water-ski, windsurf, sail, canoe, hike, or simply enjoy the beauty of our lakes in this area.

Newcomers to Bonnyville may wish to join one of our many service groups or organizations. The Seniors' Drop-In Centre is a focal point for seniors and a real drawing card for those making retirement plans. An excellent variety of stores, specialty shops, restaurants, motels and service businesses provide unique products and personalized service.

We are very proud of our vibrant main street and our specialized businesses. If you are looking for a place to start your own business, talk to us about financing, planning and location. We welcome entrepreneurs interested in developing a business on a local or regional basis.

We invite you to visit our community and experience the hospitality, uniqueness and beauty of our area. We believe that you will see it as an ideal place to raise a family.

On behalf of Council for the Town of Bonnyville,

Ray Prevost  
Mayor of Bonnyville

## Area Overview

The Town of Bonnyville is a community of over 5,890 people in the northeast Alberta Lakelands. The population has a unique multi-cultural mix of English, French, Ukrainian, native Indian, Metis, and eastern European influences.

Bonnyville, with a trading area of approximately 28,000 within a 40 km radius, acts as a service centre to the surrounding area.

Maintenance of streets, sidewalks and utility systems by the Town has created a community that people like to call home. The RCMP, fire department and ambulance personnel all work together to create a healthy and safe environment for all citizens and visitors. Further, the combination of affordable housing, proximity to schools and recreation, top-quality health care, and the overall management of planning of Bonnyville has made the community a desirable place for people of all ages. Seniors also love the pleasant lifestyle and superb services and facilities that cater to their needs. As such, Bonnyville has become a favourite retirement location for area residents.

## Community Services

## **Municipal**

Town of Bonnyville  
Bag 1006  
Bonnyville, Alberta  
T9N 2J7  
Telephone: 780-826-3496  
Fax: 780-826-4806

## **Provincial**

Agriculture Medical Examiner-Coroner  
Provincial Court Fish and Wildlife Parks and Recreation [provincial parks]  
Transportation and Utilities

## **Federal**

Health Canada  
Canada Employment Centre  
Canada Post

# Community Lifestyle

## **Recreation**

The Bonnyville region is a sportsman's paradise with countless lakes and rolling woodlands to tempt the avid hunter and fisherman. Big game species include moose, deer and bear, while the most popular fish are perch, pike, walleye and lake trout.

Bonnyville has a wide variety of recreation facilities, including the Bonnyville Golf and Country Club [18 holes], Lyle Victor Albert Centre [180-seat performing arts centre], Bonnyville Agriplex, Bonnyville Canadian Friendship Centre, ACFA de Bonnyville [French Cultural Centre], High Energy Fitness Studio, Parent Child Centre, Bonnyville Swimming Pool, R.J. Lalonde Arena, Bonnyville Curling Rink, Bonnyville Public Library, Senior Citizen's Drop-In Centre, and Spare Time Recreation [8-lane bowling alley].

Nearby campgrounds and resorts include Vezeau Beach RV Park, Muriel Lake Campground, Silver Birch Beach, Bodina Beach, and Moose Lake Provincial Park. Community Organizations Bonnyville has over 130 sports, service and agency groups to serve the needs of Bonnyville residents.

A sample includes clubs for minor hockey, figure skating, baseball and a wide range of other sports, the Bonnyville Ukrainian Club, French Folk Dancers, Kinsmen/Kinettes, Ballet, Lakeland Special Olympics, etc.

## **Hospitality**

### **Accommodation**

- Bonnyville Hotel
- Bonnyville Neighbourhood Inn
- Centre Suite Inn
- Kozy Inn Motel
- Mid-Town Motor Inn
- Southview Motel
- Western Budget Motel
- Wetlands Bed & Breakfast

### **Restaurants**

- A & W
- Restaurant Black Gold
- Burger Baron

- Casa La Bella
- Cedar Barn
- Chez Denis
- Dairy Queen
- Green Oasis Hong Kong Restaurant
- Kentucky Fried Chicken/Pizza Hut
- Mid-Town Motor Inn Restaurant
- Mister Mikes Steakhouse
- Mom's Place Family Restaurant
- Outrider Steakhouse
- Paisano's Restaurant
- Panda Gardens
- Ram's Place
- Silver Cup
- Cafe Sonny's Bar and Grill Subway

## Economic Base

Bonnyville is based on a number of resources including heavy oil and gas, agricultural resources, forestry resources, natural resources such as fishing, wildlife and other forms of tourism. Bonnyville is a regional trading centre that provides excellent services to all sectors.

## Economic Facts

Bonnyville is the traditional service centre for northeast Alberta and northwest Saskatchewan. It is centrally located for agriculture, oil and gas, tourism and community services. It is serviced by primary highways 28, 41, and 55 and secondary highways 660, 659 and 657.

Bonnyville Regional Airport serves northeast Alberta with charter, passenger and freight service, and air ambulance access. Bonnyville is the regional business centre for agriculture, petroleum, forestry, tourism, commerce and health care.

The head offices or regional offices for national, international and provincial companies, organizations or government agencies are located in Bonnyville.

### Financial Institutions

- Toronto Dominion Bank
- Royal Bank of Canada
- Lakeland Credit Union
- Alberta Treasury Branch

## Education

Bonnyville is part of the Northern Lights School Division #69, headquartered in Bonnyville [telephone: 780-826-3145], and the Lakeland Catholic Separate School Division #150, headquartered in Bonnyville [telephone: 780-826-3235]. Daycare/Nursery Parent Child Centre Public Public schools located in Bonnyville include Duclos School [ECS-4], H.E. Bourgoin School [5-8], and Bonnyville Centralized High School [9-12]. Lakeland Public Home Schooling also provides education services for Grades 1-9. Bonnyville Off-Campus Program for Grades 8-12. Separate Separate schools located in Bonnyville include Notre Dame Elementary School [K-4],

Ecole Dr. Bernard Brousseau School [5-8], and Ecole Notre Dame High School [9-12].

## Emergency Services

### Fire Protection

The Bonnyville region is served by the Bonnyville Regional Fire Department, which has 301 members in total, based in Bonnyville. The Town of Bonnyville is served by a 32-member force - **Call 911**

### Police Services

Bonnyville has a 16-member local detachment of the Royal Canadian Mounted Police [RCMP], which serves the Town of Bonnyville and the rural area - Call 911 Also working out of the Bonnyville detachment are two RCMP St. Paul Sub-Division Highway Patrol members.

### Ambulance Services

Bonnyville Municipal Ambulance Service provides an Advanced Basic Life Support level of service to the Bonnyville area - Call 911 Regional Special Constable Program offers three

Special Constables providing services to both the Town of Bonnyville and the M.D. of Bonnyville No. 87. Phone: (780) 812-3332

## Health Care

Bonnyville's hospital needs are served by the Bonnyville Health Centre, which has 24 acute care beds, 30 long term care beds and 10 day beds. The Northeastern Alberta Health Unit has an office in Bonnyville, and offers public health, dental health, health inspector, home care, speech and language pathology, genetic counselling, and diabetic clinic services. Other facilities available in Bonnyville include 2 medical clinics, 2 dental clinics, 1 denture clinic, 1 optometrist, and 3 chiropractors. Bonnyville also has the Bonnylodge, a 42-room senior citizen lodge, and Extendicare Bonnyville, a 50-bed long-term care facility.

## Key Contacts for Business Development

### Municipal

Town of Bonnyville

Bag 1006

Bonnyville, Alberta

T9N 2J7

Telephone: 780-826-3496

Fax: 780-826-4806

[admin@town.bonnyville.ab.ca](mailto:admin@town.bonnyville.ab.ca)

Raymond Prevost

Mayor

Allan Harvey, CLGM

Chief Administrative Officer

[alharvey@town.bonnyville.ab.ca](mailto:alharvey@town.bonnyville.ab.ca)

Katherine Currie

Development Officer

Bonnyville & District Chamber of Commerce

Box 6054

Bonnyville, Alberta

T9N 2G7

Telephone: 780-826-3252  
[info@bonnyvillechamber.com](mailto:info@bonnyvillechamber.com)  
[www.bonnyvillechamber.com](http://www.bonnyvillechamber.com)

Lakeland Community Development Corporation  
Phyllis Maki,  
Manager  
PO Box 8114  
Bonnyville, Alberta  
T9N 2J4  
Telephone: 780-826-3858  
Fax: 780-826-7330

**Provincial (Updated December 2004)**

**Alberta Economic Development**

Box 412 Room 308,  
Provincial Building  
5025 - 49 Avenue  
St. Paul, Alberta  
T0A 3A4  
Tel: 780-645-6358  
Fax: 780-645-6241

**Garry Krause,**  
Regional Manager

**Maryann Robinson,**  
Client Service Representative

Denis Ducharme  
Member of the Legislative Assembly (MLA)  
Bonnyville - Cold Lake Constituency

Constituency Office  
Box 5160, 4901 - 50 Avenue  
Bonnyville, AB  
T9N 2G4  
Phone: (780) 826-5658  
Fax: (780) 826-2165  
[bonnyville-coldlake@assembly.ab.ca](mailto:bonnyville-coldlake@assembly.ab.ca)

Legislature Office  
#639, 9718 - 107 Street  
Edmonton, AB  
T5K 1E4  
Phone: (780) 415-0995  
Fax: (780) 415-0951

**Federal (May 2006)**

MP- Westlock--St. Paul, Alberta  
STORSETH, Brian (Conservative)

Parliamentary Address  
House of Commons  
Ottawa, Ontario  
K1A 0A6  
Telephone: (613) 996-1783  
Fax: (613) 995-1415

## Location

The Town of Bonnyville is located in the Municipal District of Bonnyville #87, in northeast Alberta. It is 243 km east of Edmonton on Highway 28, 71 km northeast of St. Paul, and 50 km southeast of Cold Lake.

## Post Secondary Education

Post-secondary education opportunities are available from the Bonnyville Community Learning Council, Tonder Training Centre and Portage College.

## Taxation

---

	<u>Residential/Farmland</u>	<u>Non-Residential</u>
<b>2005</b>		
Municipal Tax Rate	10.1860	17.0570
Education - Alberta School Foundation Fund Tax Rate	4.0873	6.5760
Education Opted Out Tax Rate	4.0873	6.5760
Seniors Lodge Accommodation Tax Rate	.0760	.0760

---

### Mill Rates

[2003] Residential - Public 14.9320  
Residential - Separate 14.9320  
Non-Residential - Public 24.3294  
Non-Residential - Separate 24.3294

## Transportation

### Air Services

Bonnyville Regional Airport has a 1,350-metre runway, terminal services, parking, maintenance and repairs. Bonnyville Air Services Ltd. provides charter service.

### Highways

Connecting highways include Highway 28 west to Edmonton and east to Cold Lake, Highway 41 north to Fort McMurray and south to the United States, and Secondary Road 659 to Lloydminster.

### Trucking Firms

- B & R Eckels
- Transport Renegade Trucking

### Bus Services

Greyhound Bus Lines provides regularly scheduled inter-community service. Charters are also available from Luciak Bus Lines and Dallaire Bus Lines.

### Couriers and Taxis

Greyhound Courier Express, Priority Post, Loomis and Purolator courier services.

Taxi service is available from Taxi Line.

## Utilities

### Electrical Power

ATCO Electric

5410 - 54 Avenue

Bonnyville, Alberta

Telephone: 1-800-668-2248

Customer/Billing Enquiries

Telephone: 1-800-668-5506

24 Hour Emergency

### Repair Natural Gas

AltaGas Utilities Inc.

Telephone: 1-866-222-2067

### Telephone

Telus Communications

Telephone: 780-310-2255

- Adds/Moves/Changes/Billings/Enquiries

### Cable Northern Cablevision

Telephone: 1-800-661-1904

Water/Sewer

Town of Bonnyville

Telephone: 780-826-3496

- Hookups, Disconnects, Enquiries The source of water is Moose Lake.

The reservoir capacity, measured in treated substance, is 7,430 cubic metres.

### Waste Management

Sewage treatment is provided by a series of lagoons consisting of 4 short and 2 long retention ponds.

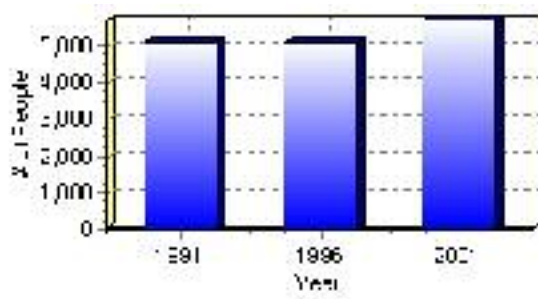
# Population

## Total Population

Population 2004*	5,709
Population 2003*	5,709
Population 2002*	5,709
Population 2001**	5,710
Population 2000*	5,397
Population 1996**	5,100
Population 1991**	5,132
Population % change 1991-1996	-0.63%
Population % change 1996-2001	10.67%

\* Source: Official Population List, Alberta Municipal Affairs  
\*\* Source: Statistics Canada 1991, 1996, & 2001 Census

## Total Population 1991-2001

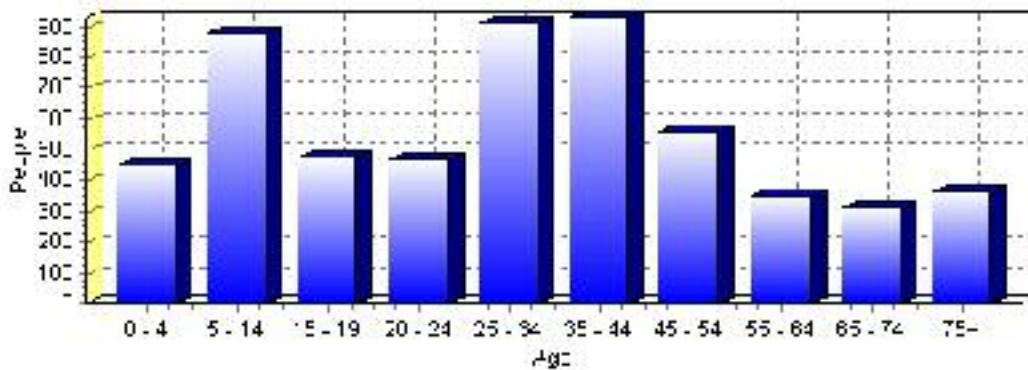




Population by Age and Gender	1996 Male	1996 Female	1996 Total	2001 Male	2001 Female	2001 Total
Age 0 - 4	225	205	430	240	210	450
Age 5 - 14	465	435	900	445	430	875
Age 15 - 19	250	170	420	255	220	475
Age 20 - 24	220	180	400	260	205	465
Age 25 - 34	425	420	845	480	430	910
Age 35 - 44	380	360	740	455	475	930
Age 45 - 54	200	230	430	300	260	560
Age 55 - 64	160	160	320	165	185	350
Age 65 - 74	140	170	310	140	175	315
Age 75 and older	125	185	310	140	225	365
Total All Persons	2,585	2,510	5,095	2,890	2,815	5,705

Source: Statistics Canada 1996 & 2001 Census (numbers may not add up due to rounding)

### Bonnyville Population by Age Group (2001)

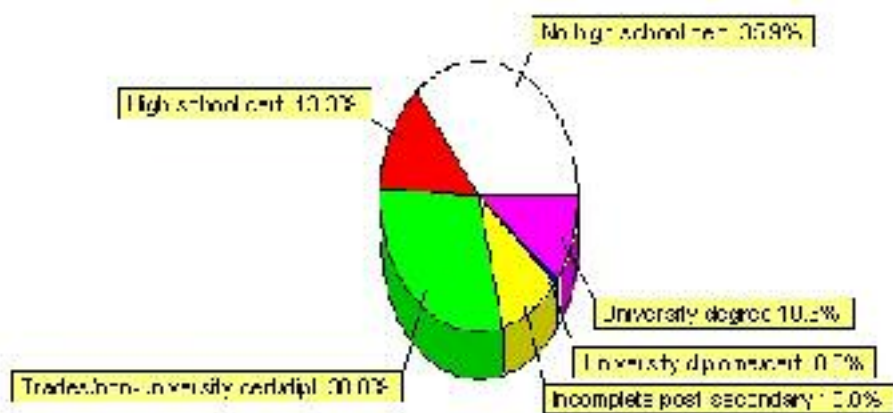


## Education Statistics

Highest level of schooling for Population 20yrs and older	2001	%
People without high school certificates	1,340	35.88%
People with high school certificates	495	13.25%
People with trades or non-university certificate or diploma	1,120	29.99%
People with post-secondary education (not completed)	375	10.04%
People with university diploma/certificate	30	0.80%
People with university degree	385	10.31%
Total Population 20 years and older	3,735	100.00%

Source: Statistics Canada 2001 Census (numbers may not add up due to rounding)

### Bonnyville Highest Level of Schooling 2001



Population with Post Secondary Qualifications	1996	%	2001	%
Agriculture and biological sciences	55	4.44%	35	2.28%
Commerce, management and business administration	215	17.34%	200	13.03%
Educational, recreational and counseling services	165	13.31%	275	17.92%
Engineering and applied science tech. and trades	460	37.10%	595	38.76%
Engineering and applied sciences	10	0.81%	0	0.00%
Fine and applied arts	40	3.23%	55	3.58%
Health professionals, science and technologies	150	12.10%	170	11.07%
Humanities and related fields	50	4.03%	65	4.23%
Mathematics and physical sciences	0	0.00%	20	1.30%
Social sciences and related fields	80	6.45%	100	6.51%
Other and/or no specialization	0	0.00%	0	0.00%
Total people with post secondary qualifications	1,240	100.00%	1,535	100.00%
Females with post-secondary qualifications	560	45.16%	685	44.63%
Males with post-secondary qualifications	680	54.84%	850	55.37%

Source: Statistics Canada 1996 & 2001 Census (numbers may not add up due to rounding)

## Labour Force

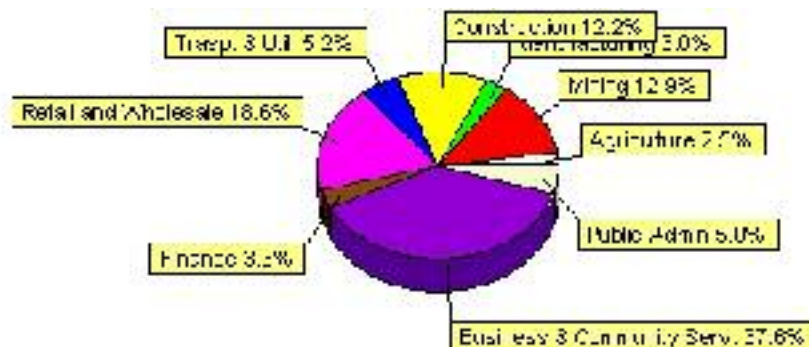
Labour force by activity	1996	2001
In the labour force, both sexes	2,525	3,005
Not in the labour force, both sexes	1,080	1,205
Total population 15 and over	3,605	4,205
Employed, both sexes	2,300	2,785
Unemployed, both sexes	225	215
Participation rate, both sexes	70.00%	72.00%
Unemployment rate, both sexes	8.00%	7.00%

Source: Statistics Canada 1996 & 2001 Census (numbers may not add up due to rounding)

Labour Force by Industry Division	1996	% of total	2001	% of total
Agriculture	45	1.80%	75	2.51%
Mining	360	14.43%	385	12.88%
Manufacturing	30	1.20%	90	3.01%
Construction	310	12.42%	365	12.21%
Transportation. & Utilities	180	7.21%	155	5.18%
Retail and Wholesale	360	14.43%	555	18.56%
Finance	70	2.81%	100	3.34%
Business & Community Services	960	38.48%	1,125	37.63%
Public Administration	85	3.41%	150	5.02%
Total All Industries	2,495	100.00%	2,990	100.00%

Source: Statistics Canada 1996 & 2001 Census (numbers may not add up due to rounding)

### Bonnyville Labour Force By Industry - 2001



Labour Force by Major Occupational Groups	1996	%	2001	%
Management occupations	190	7.60%	255	8.54%
Business, Finances and administrative occupations	360	14.40%	385	12.90%
Natural and applied sciences and related occupations	95	3.80%	125	4.19%
Health occupations	85	3.40%	180	6.03%
Occupations in social science; education; government and religion	215	8.60%	225	7.54%
Occupations in art; culture; recreation and sport	20	0.80%	35	1.17%

Sales and service occupations	585	23.40%	675	22.61%
Trades; transport; equipment operators and related occupations	510	20.40%	645	21.61%
Occupations unique to primary industry	225	9.00%	355	11.89%
Occupations unique to processing; manufacturing and utilities	215	8.60%	110	3.69%
Occupations not elsewhere classified	30	1.20%	10	0.34%
Total - All Occupations (major groups)	2,500	100.00%	2,985	100.00%
Females - All Occupations	1,045	41.80%	1,300	43.55%
Males - All Occupations	1,455	58.20%	1,690	56.62%

Source: Statistics Canada 1996 & 2001 Census (numbers may not add up due to rounding)

---

## Income

<b>Family Income (Number of Families)</b>	<b>1996</b>	<b>%</b>	<b>2001</b>	<b>%</b>
less than \$19,999	110	10.33%	150	12.93%
\$20,000 - \$39,999	290	27.23%	370	31.90%
\$40,000 - \$59,999	300	28.17%	245	21.12%
\$60,000 and over	365	34.27%	490	42.24%
Total number of families	1,065	100.00%	1,255	108.19%
Average family income	\$52,676		\$62,825	
Median family income	\$49,062		\$60,202	

Source: Statistics Canada 1996 & 2001 Census (numbers may not add up due to rounding)

<b>Household Income (Number of Households)</b>	<b>1996</b>	<b>%</b>	<b>2001</b>	<b>%</b>
less than \$19,999	455	25.21%	370	17.70%
\$20,000 - \$39,999	490	27.15%	460	22.01%
\$40,000 - \$59,999	400	22.16%	340	16.27%
\$60,000 and over	150	8.31%	920	44.02%
Total number of households	1,805	100.00%	2,090	100.00%
Average household income	\$44,078		\$57,770	
Median household income	\$38,290		\$50,527	

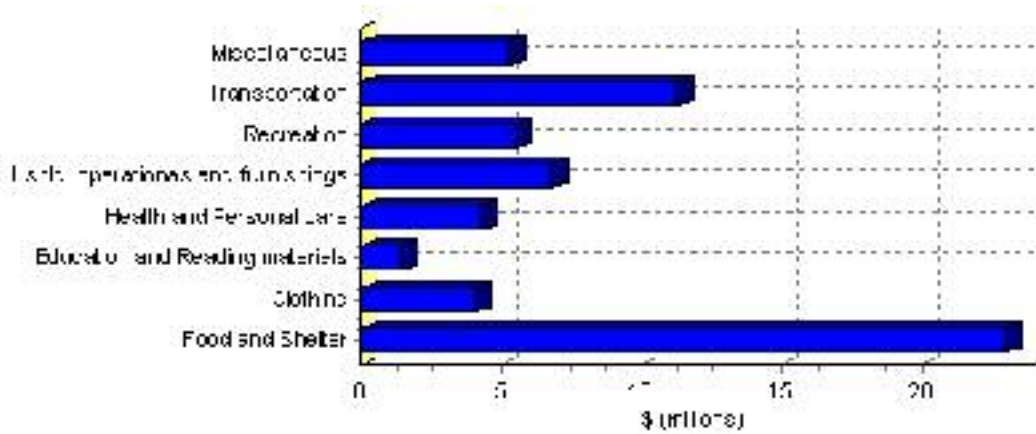
Source: Statistics Canada 1996 & 2001 Census (numbers may not add up due to rounding)

# Family Expenditure

Expenditure Category	1992	% of total	1996	% of total
Food and Shelter	\$19,141,885	37.59%	\$23,005,795	37.36%
Clothing	\$3,439,140	6.75%	\$4,071,088	6.61%
Education and Reading materials	\$1,050,010	2.06%	\$1,395,743	2.27%
Health and Personal care	\$3,191,115	6.27%	\$4,257,311	6.91%
Hshld. operations and furnishings	\$5,597,480	10.99%	\$6,782,395	11.01%
Recreation	\$4,072,720	8.00%	\$5,472,077	8.89%
Transportation	\$10,383,200	20.39%	\$11,321,093	18.38%
Miscellaneous	\$4,021,350	7.90%	\$5,273,292	8.56%
Total Current Consumption	\$50,919,790	100.00%	\$61,578,794	100.00%
Total # of Households	1,815		1,803	
Average Consumption per Household	\$28,055		\$34,154	

Source: Statistics Canada Family Expenditure Survey 1992 & 1996 (numbers may not add up due to rounding).

## Bonnyville Family Expenditures (1996)

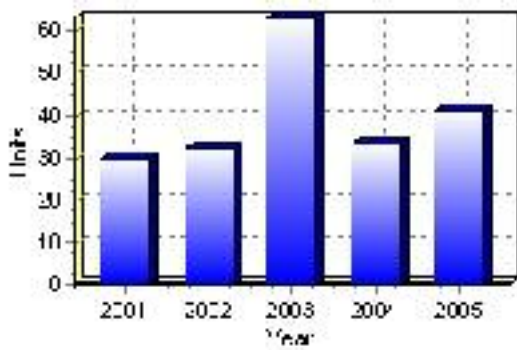


# Building Permits

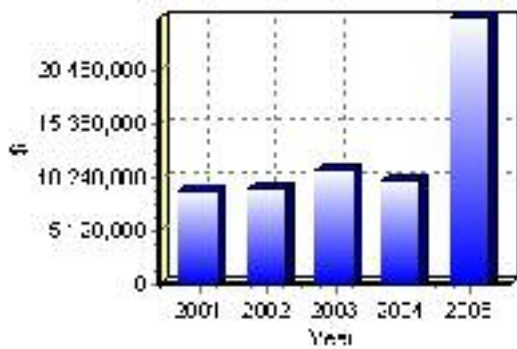
Total Building Permit Values	2001	2002	2003	2004	2005
Building Permits Value, Commercial	\$3,024,000	\$3,824,000	\$1,333,000	\$4,304,000	\$18,217,000
Building Permits Value, Industrial	\$1,115,000	\$587,000	\$1,378,000	\$415,000	\$1,201,000
Building Permits Value, Institutional	\$0	\$2,000	\$480,000	\$272,000	\$135,000
Building Permits Value, Residential	\$4,853,000	\$4,772,000	\$7,636,000	\$4,998,000	\$5,919,000
Building Permits Value, Total	\$8,992,000	\$9,185,000	\$10,827,000	\$9,989,000	\$25,472,000
Total Housing Starts	30	32	63	33	41

Source: Statistics Canada 2000-2004 Building Permits (numbers may not add up due to rounding)

## Total Housing Starts



## Value of Building Permits



## Dwellings

<b>Occupied Private Dwellings by Type</b>	<b>1996</b>	<b>% of total</b>	<b>2001</b>	<b>% of total</b>
Apartments	290	16.11%	390	18.66%
Detached Duplexes	20	1.11%	70	3.35%
Movable Dwellings	65	3.61%	115	5.50%
Other single attached house	0	0.00%	0	0.00%
Row and semi-detached house	180	10.00%	115	5.50%
Single-detached house	1,245	69.17%	1,390	66.51%
Total number of occupied private dwellings	1,800	100.00%	2,090	100.00%
Private dwellings, owned	1,045	58.06%	1,365	65.31%
Private Dwellings, rented	755	41.94%	720	34.45%

Source: Statistics Canada 1996 & 2001 Census (numbers may not add up due to rounding)

<b>Private Dwellings by Period of Construction</b>	<b># of Dwellings</b>	<b>% of total</b>
Period of construction, before 1946	135	6.46%
Period of construction, 1946 - 1960	160	7.66%
Period of construction, 1961 - 1970	395	18.90%
Period of construction, 1971 - 1980	700	33.49%
Period of construction, 1981 - 1990	435	20.81%
Period of construction, 1991 - 2001	265	12.68%
Total number of private dwellings constructed	2,090	100.00%

Source: Statistics Canada 2001 Census (numbers may not add up due to rounding)



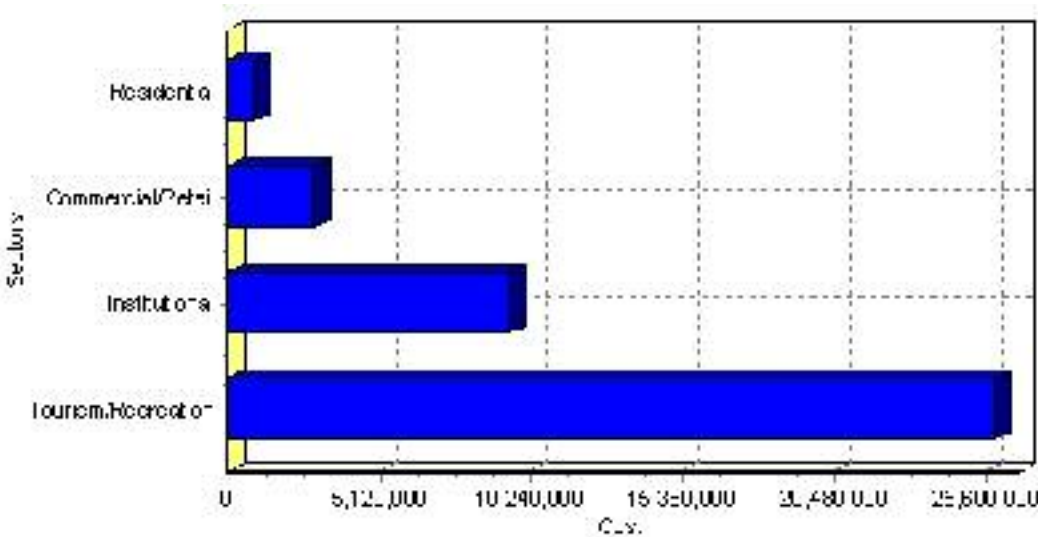
# Projects

## Summary of Projects in Bonnyville as of September 2006

Project Sector	Number of Projects	Project Cost
Tourism/Recreation	2	\$25,900,000
Institutional	2	\$9,520,000
Commercial/Retail	8	\$2,903,000
Residential	1	\$900,000
Total	13	\$39,223,000

This inventory lists projects in Alberta that have recently been completed, are under construction, or are proposed to start construction. Not all projects are listed due to reasons of confidentiality and/or due to information not being available at the time of printing. Project data is obtained from public information sources, where possible, this data has been verified with the project proponent/developer, users of the Inventory may wish to confirm project data with the proponent/developer. The inventory does not breakdown project expenditures by any given year. The cost of a project is the value of expenditures expected over all phases of project construction, which may span over two or more years. Cost of projects listed in the Inventory are estimated values only. Source: Alberta Economic Development, 2004.

## Value of Projects by Sector (as of September 2006)



Project Status	Number of Projects	Project Cost
Proposed	4	\$11,270,000
Under Construction	9	\$27,953,000
Total	13	\$39,223,000

This inventory lists projects in Alberta that have recently been completed, are under construction, or are proposed to start construction. Not all projects are listed due to reasons of confidentiality and/or due to information not being available at the time of printing. Project data is obtained from public information sources, where possible, this data has been verified with the project proponent/developer, users of the Inventory may wish to confirm project data with the proponent/developer. The inventory does not breakdown project expenditures by any given year. The cost of a project is the value of expenditures expected over all phases of project construction, which may span over two or more years. Cost of projects listed in the Inventory are estimated values only. Source: Alberta Economic Development, 2004.

## Largest Projects in Bonnyville as of September 2006

Company Name	Project Description	Project Location	Project Cost	Construction Schedule	Status
MD of Bonnyville / Town of Bonnyville	'Centennial Centre' Multi-use Complex	Bonnyville	\$24,500,000	2005-2006	Under Construction
Alberta Infrastructure and Transportation*	Replacement School (K to Grade 12)	Bonnyville	\$8,700,000	-	Proposed
Western Budget Motel Ltd.	Motel - Construction (18866 Sq Ft)	Bonnyville	\$1,400,000	-	Proposed
Bonnyville Medical Clinic	Facility Addition	Bonnyville	\$1,000,000	2006-2006	Under Construction
Bonnyville Affordable Housing Association	Affordable 6-Unit Housing Project for People With Disabilities	Bonnyville	\$900,000	-	Proposed
Town of Bonnyville	Ambulance Bay Expansion - 3 Bay Addition	Bonnyville	\$820,000	2006-2006	Under Construction
Bear Slashing Ltd.	5000 Sq Ft Office Building	Bonnyville	\$600,000	2006-2006	Under Construction
Mclean Young Construction Ltd.	Restaurant Alteration & Improvements	Bonnyville	\$400,000	2006-2006	Under Construction
Rivard's Auctioneering Ltd.	Building Addition	Bonnyville	\$270,000	-	Proposed
Cabana Construction (1984) Ltd.	Storage Building / Warehouse	Bonnyville	\$255,000	2006-2006	Under Construction

Disclaimer: Information in this profile has been provided from a variety of external sources. Although every effort has been made to ensure the accuracy, currency and reliability of the content and data, AlbertaFirst.com Ltd. accepts no responsibility in this regard.

© AlbertaFirst.com Ltd., 2006.