

Big Valley

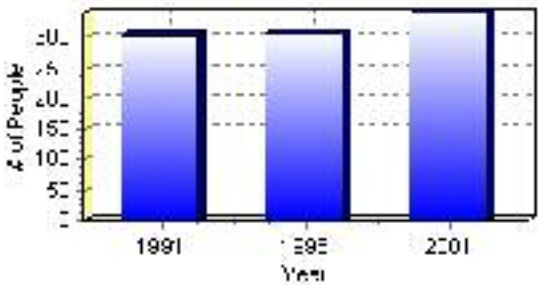
Population

Total Population

Population 2004*	340
Population 2003*	340
Population 2002*	340
Population 2001**	340
Population 2000*	308
Population 1996**	308
Population 1991**	303
Population % change 1991-1996	1.62%
Population % change 1996-2001	9.41%

* Source: Official Population List, Alberta Municipal Affairs
** Source: Statistics Canada 1991, 1996, & 2001 Census

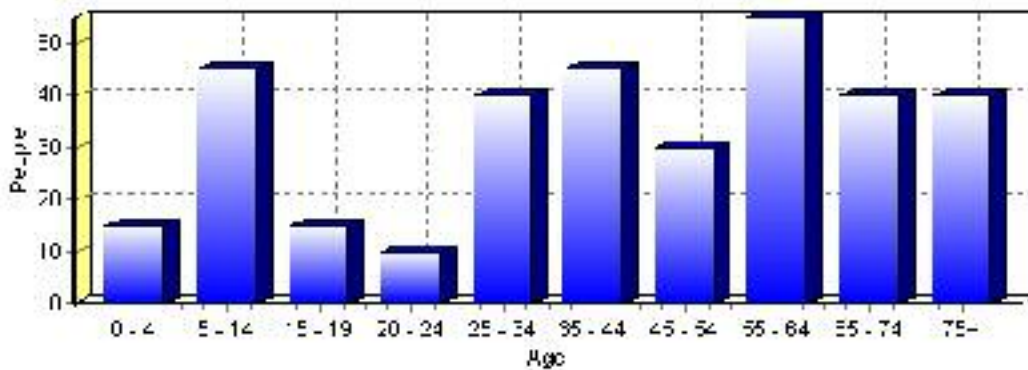
Total Population 1991-2001



Population by Age and Gender	1996 Male	1996 Female	1996 Total	2001 Male	2001 Female	2001 Total
Age 0 - 4	10	10	20	5	10	15
Age 5 - 14	20	15	35	25	20	45
Age 15 - 19	10	5	15	10	5	15
Age 20 - 24	5	5	10	5	5	10
Age 25 - 34	20	15	35	20	20	40
Age 35 - 44	15	15	30	30	15	45
Age 45 - 54	15	20	35	15	15	30
Age 55 - 64	25	20	45	25	30	55
Age 65 - 74	15	20	35	20	20	40
Age 75 and older	20	20	40	25	15	40
Total All Persons	160	145	305	165	170	335

Source: Statistics Canada 1996 & 2001 Census (numbers may not add up due to rounding)

Big Valley Population by Age Group (2001)

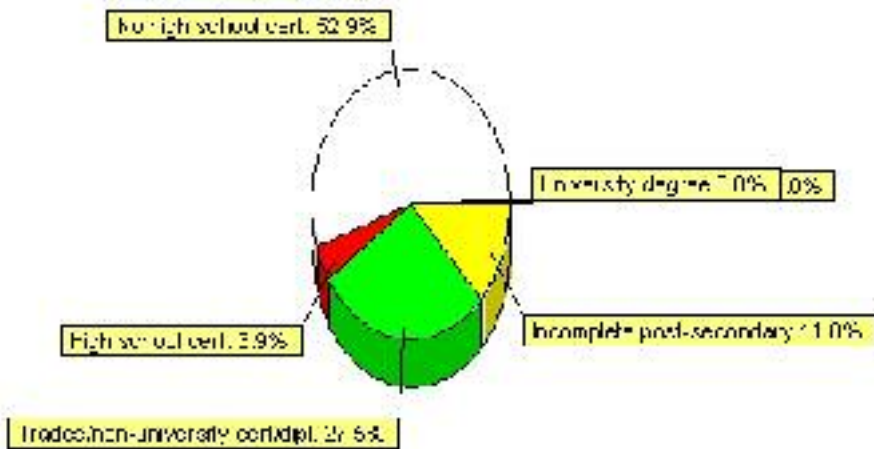


Education Statistics

Highest level of schooling for Population 20yrs and older	2001	%
People without high school certificates	135	52.94%
People with high school certificates	10	3.92%
People with trades or non-university certificate or diploma	70	27.45%
People with post-secondary education (not completed)	30	11.76%
People with university diploma/certificate	0	0.00%
People with university degree	0	0.00%
Total Population 20 years and older	255	100.00%

Source: Statistics Canada 2001 Census (numbers may not add up due to rounding)

Big Valley Highest Level of Schooling 2001



Population with Post Secondary Qualifications	1996	%	2001	%
Agriculture and biological sciences	10	13.33%	0	0.00%
Commerce, management and business administration	0	0.00%	30	37.50%
Educational, recreational and counseling services	10	13.33%	0	0.00%
Engineering and applied science tech. and trades	40	53.33%	25	31.25%
Engineering and applied sciences	0	0.00%	0	0.00%
Fine and applied arts	0	0.00%	0	0.00%
Health professionals, science and technologies	10	13.33%	10	12.50%
Humanities and related fields	0	0.00%	0	0.00%
Mathematics and physical sciences	0	0.00%	0	0.00%
Social sciences and related fields	0	0.00%	10	12.50%
Other and/or no specialization	0	0.00%	0	0.00%
Total people with post secondary qualifications	75	100.00%	80	100.00%
Females with post-secondary qualifications	20	26.67%	45	56.25%
Males with post-secondary qualifications	55	73.33%	35	43.75%

Source: Statistics Canada 1996 & 2001 Census (numbers may not add up due to rounding)

Labour Force

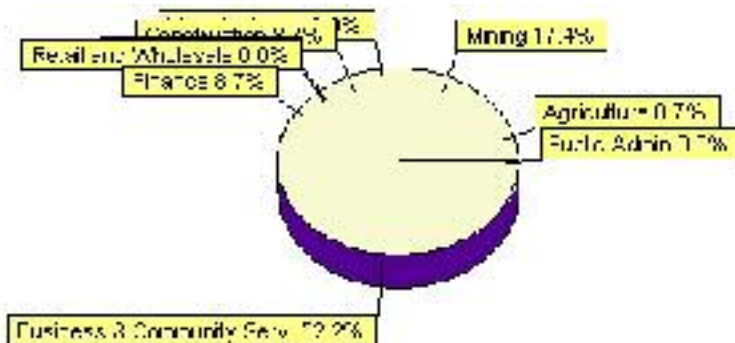
Labour force by activity	1996	2001
In the labour force, both sexes	130	110
Not in the labour force, both sexes	135	155
Total population 15 and over	265	270
Employed, both sexes	130	100
Unemployed, both sexes	0	10
Participation rate, both sexes	49.00%	41.00%
Unemployment rate, both sexes	0.00%	9.00%

Source: Statistics Canada 1996 & 2001 Census (numbers may not add up due to rounding)

Labour Force by Industry Division	1996	% of total	2001	% of total
Agriculture	0	0.00%	10	8.70%
Mining	35	25.93%	20	17.39%
Manufacturing	0	0.00%	0	0.00%
Construction	0	0.00%	10	8.70%
Transportation. & Utilities	10	7.41%	0	0.00%
Retail and Wholesale	25	18.52%	0	0.00%
Finance	0	0.00%	10	8.70%
Business & Community Services	35	25.93%	60	52.17%
Public Administration	10	7.41%	0	0.00%
Total All Industries	135	100.00%	115	100.00%

Source: Statistics Canada 1996 & 2001 Census (numbers may not add up due to rounding)

Big Valley Labour Force By Industry - 2001



Labour Force by Major Occupational Groups	1996	%	2001	%
Management occupations	20	14.81%	10	9.09%
Business, Finances and administrative occupations	0	0.00%	10	9.09%
Natural and applied sciences and related occupations	0	0.00%	0	0.00%
Health occupations	10	7.41%	0	0.00%
Occupations in social science; education; government and religion	15	11.11%	15	13.64%
Occupations in art; culture; recreation and sport	0	0.00%	0	0.00%

Sales and service occupations	50	37.04%	35	31.82%
Trades; transport; equipment operators and related occupations	10	7.41%	20	18.18%
Occupations unique to primary industry	15	11.11%	30	27.27%
Occupations unique to processing; manufacturing and utilities	15	11.11%	10	9.09%
Occupations not elsewhere classified	0	0.00%	0	0.00%
Total - All Occupations (major groups)	135	100.00%	110	100.00%
Females - All Occupations	60	44.44%	40	36.36%
Males - All Occupations	75	55.56%	70	63.64%

Source: Statistics Canada 1996 & 2001 Census (numbers may not add up due to rounding)

Income

Family Income (Number of Families)	1996	%	2001	%
less than \$19,999	0	0.00%	40	38.10%
\$20,000 - \$39,999	45	56.25%	40	38.10%
\$40,000 - \$59,999	10	12.50%	15	14.29%
\$60,000 and over	25	31.25%	0	0.00%
Total number of families	80	100.00%	95	90.48%
Average family income	\$50,706		\$32,600	
Median family income	\$37,244		\$24,018	

Source: Statistics Canada 1996 & 2001 Census (numbers may not add up due to rounding)

Household Income (Number of Households)	1996	%	2001	%
less than \$19,999	30	21.43%	65	43.33%
\$20,000 - \$39,999	65	46.43%	55	36.67%
\$40,000 - \$59,999	20	14.29%	15	10.00%
\$60,000 and over	15	10.71%	15	10.00%
Total number of households	140	100.00%	150	100.00%
Average household income	\$42,185		\$35,081	
Median household income	\$33,882		\$23,982	

Source: Statistics Canada 1996 & 2001 Census (numbers may not add up due to rounding)

Dwellings

Occupied Private Dwellings by Type	1996	% of total	2001	% of total
Apartments	0	0.00%	5	3.23%
Detached Duplexes	0	0.00%	0	0.00%
Movable Dwellings	25	17.86%	30	19.35%
Other single attached house	0	0.00%	0	0.00%
Row and semi-detached house	10	7.14%	5	3.23%
Single-detached house	100	71.43%	115	74.19%
Total number of occupied private dwellings	140	100.00%	155	100.00%
Private dwellings, owned	100	71.43%	130	83.87%
Private Dwellings, rented	45	32.14%	20	12.90%

Source: Statistics Canada 1996 & 2001 Census (numbers may not add up due to rounding)

Private Dwellings by Period of Construction	# of Dwellings	% of total
Period of construction, before 1946	50	33.33%
Period of construction, 1946 - 1960	50	33.33%
Period of construction, 1961 - 1970	0	0.00%
Period of construction, 1971 - 1980	40	26.67%
Period of construction, 1981 - 1990	10	6.67%
Period of construction, 1991 - 2001	0	0.00%
Total number of private dwellings constructed	150	100.00%

Source: Statistics Canada 2001 Census (numbers may not add up due to rounding)

Disclaimer: Information in this profile has been provided from a variety of external sources. Although every effort has been made to ensure the accuracy, currency and reliability of the content and data, AlbertaFirst.com Ltd. accepts no responsibility in this regard.

© AlbertaFirst.com Ltd., 2006.