

# Myrnam

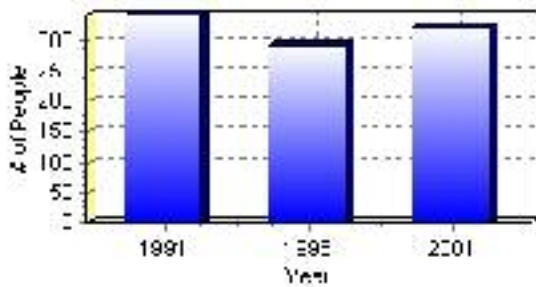
## Population

### Total Population

Population 2004*	322
Population 2003*	322
Population 2002*	322
Population 2001**	320
Population 2000*	294
Population 1996**	294
Population 1991**	342
Population % change 1991-1996	-16.33%
Population % change 1996-2001	8.70%

\* Source: Official Population List, Alberta Municipal Affairs  
\*\* Source: Statistics Canada 1991, 1996, & 2001 Census

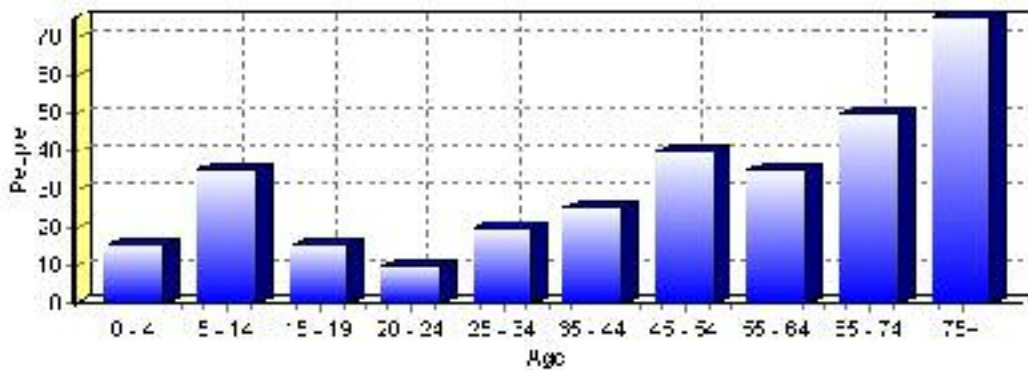
### Total Population 1991-2001



Population by Age and Gender	1996 Male	1996 Female	1996 Total	2001 Male	2001 Female	2001 Total
Age 0 - 4	10	5	15	5	10	15
Age 5 - 14	10	10	20	15	20	35
Age 15 - 19	5	5	10	10	5	15
Age 20 - 24	0	5	5	5	5	10
Age 25 - 34	10	10	20	10	10	20
Age 35 - 44	5	15	20	15	10	25
Age 45 - 54	25	15	40	15	25	40
Age 55 - 64	20	25	45	20	15	35
Age 65 - 74	25	25	50	30	20	50
Age 75 and older	20	50	70	30	45	75
Total All Persons	135	155	290	160	165	325

Source: Statistics Canada 1996 & 2001 Census (numbers may not add up due to rounding)

### Myrnam Population by Age Group (2001)

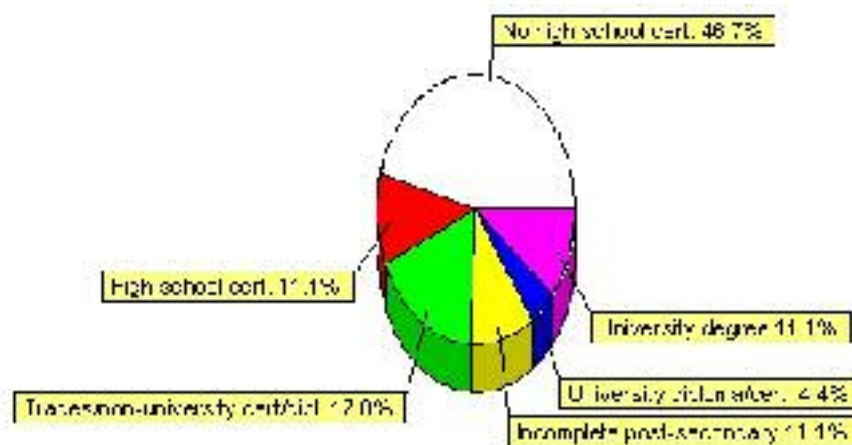


# Education Statistics

Highest level of schooling for Population 20yrs and older	2001	%
People without high school certificates	105	46.67%
People with high school certificates	25	11.11%
People with trades or non-university certificate or diploma	40	17.78%
People with post-secondary education (not completed)	25	11.11%
People with university diploma/certificate	10	4.44%
People with university degree	25	11.11%
Total Population 20 years and older	225	100.00%

Source: Statistics Canada 2001 Census (numbers may not add up due to rounding)

## Myrnam Highest Level of Schooling 2001



Population with Post Secondary Qualifications	1996	%	2001	%
Agriculture and biological sciences	0	0.00%	0	0.00%
Commerce, management and business administration	20	21.05%	10	12.50%
Educational, recreational and counseling services	25	26.32%	40	50.00%
Engineering and applied science tech. and trades	35	36.84%	15	18.75%
Engineering and applied sciences	0	0.00%	0	0.00%
Fine and applied arts	0	0.00%	10	12.50%
Health professionals, science and technologies	10	10.53%	0	0.00%
Humanities and related fields	0	0.00%	0	0.00%
Mathematics and physical sciences	0	0.00%	0	0.00%
Social sciences and related fields	0	0.00%	0	0.00%
Other and/or no specialization	0	0.00%	0	0.00%
Total people with post secondary qualifications	95	100.00%	80	100.00%
Females with post-secondary qualifications	50	52.63%	35	43.75%
Males with post-secondary qualifications	45	47.37%	45	56.25%

Source: Statistics Canada 1996 & 2001 Census (numbers may not add up due to rounding)

## Labour Force

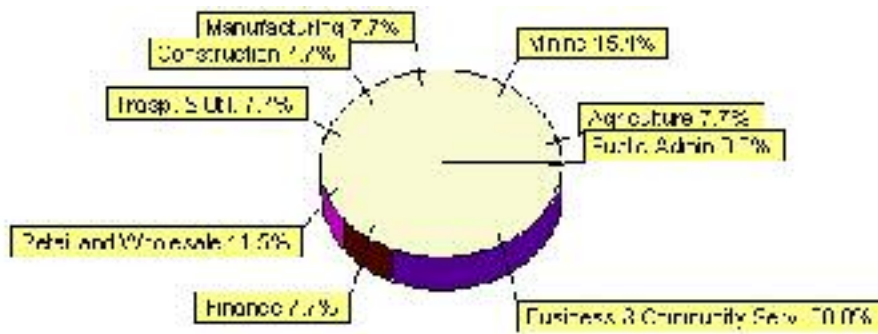
Labour force by activity	1996	2001
In the labour force, both sexes	120	130
Not in the labour force, both sexes	115	110
Total population 15 and over	235	240
Employed, both sexes	95	135
Unemployed, both sexes	25	0
Participation rate, both sexes	51.00%	54.00%
Unemployment rate, both sexes	21.00%	0.00%

Source: Statistics Canada 1996 & 2001 Census (numbers may not add up due to rounding)

Labour Force by Industry Division	1996	% of total	2001	% of total
Agriculture	20	16.67%	10	7.69%
Mining	0	0.00%	20	15.38%
Manufacturing	0	0.00%	10	7.69%
Construction	10	8.33%	10	7.69%
Transportation. & Utilities	10	8.33%	10	7.69%
Retail and Wholesale	35	29.17%	15	11.54%
Finance	0	0.00%	10	7.69%
Business & Community Services	40	33.33%	40	30.77%
Public Administration	0	0.00%	0	0.00%
Total All Industries	120	100.00%	130	100.00%

Source: Statistics Canada 1996 & 2001 Census (numbers may not add up due to rounding)

### Myrnam Labour Force By Industry - 2001



Labour Force by Major Occupational Groups	1996	%	2001	%
Management occupations	0	0.00%	15	11.11%
Business, Finances and administrative occupations	15	12.50%	10	7.41%
Natural and applied sciences and related occupations	0	0.00%	0	0.00%
Health occupations	10	8.33%	10	7.41%
Occupations in social science; education; government and religion	10	8.33%	15	11.11%
Occupations in art; culture; recreation and sport	0	0.00%	0	0.00%

Sales and service occupations	35	29.17%	25	18.52%
Trades; transport; equipment operators and related occupations	20	16.67%	25	18.52%
Occupations unique to primary industry	25	20.83%	35	25.93%
Occupations unique to processing; manufacturing and utilities	0	0.00%	0	0.00%
Occupations not elsewhere classified	10	8.33%	0	0.00%
Total - All Occupations (major groups)	120	100.00%	135	100.00%
Females - All Occupations	35	29.17%	55	40.74%
Males - All Occupations	85	70.83%	75	55.56%

Source: Statistics Canada 1996 & 2001 Census (numbers may not add up due to rounding)

---

## Income

<b>Family Income (Number of Families)</b>	<b>1996</b>	<b>%</b>	<b>2001</b>	<b>%</b>
less than \$19,999	10	14.29%	25	41.67%
\$20,000 - \$39,999	50	71.43%	25	41.67%
\$40,000 - \$59,999	0	0.00%	25	41.67%
\$60,000 and over	10	14.29%	0	0.00%
Total number of families	70	100.00%	75	125.00%
Average family income	\$42,032		\$37,060	
Median family income	\$24,228		\$36,266	

Source: Statistics Canada 1996 & 2001 Census (numbers may not add up due to rounding)

<b>Household Income (Number of Households)</b>	<b>1996</b>	<b>%</b>	<b>2001</b>	<b>%</b>
less than \$19,999	50	34.48%	65	44.83%
\$20,000 - \$39,999	70	48.28%	40	27.59%
\$40,000 - \$59,999	0	0.00%	40	27.59%
\$60,000 and over	0	0.00%	0	0.00%
Total number of households	145	100.00%	145	100.00%
Average household income	\$32,937		\$28,926	
Median household income	\$22,258		\$23,400	

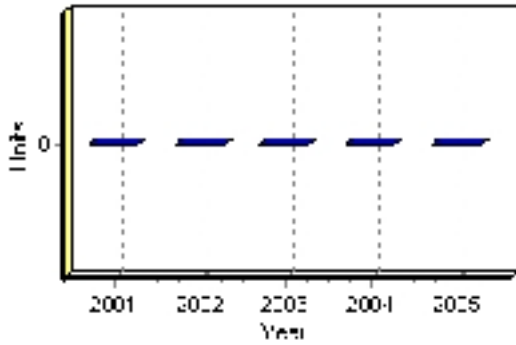
Source: Statistics Canada 1996 & 2001 Census (numbers may not add up due to rounding)

# Building Permits

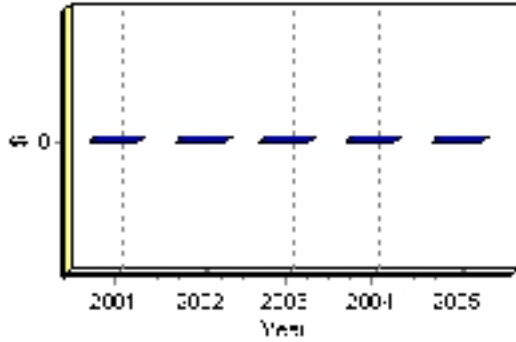
Total Building Permit Values	2001	2002	2003	2004	2005
Building Permits Value, Commercial	\$0	\$0	\$0	\$0	\$0
Building Permits Value, Industrial	\$0	\$0	\$0	\$0	\$0
Building Permits Value, Institutional	\$0	\$0	\$0	\$0	\$0
Building Permits Value, Residential	\$0	\$0	\$0	\$0	\$0
Building Permits Value, Total	\$0	\$0	\$0	\$0	\$0
Total Housing Starts	0	0	0	0	0

Source: Statistics Canada 2000-2004 Building Permits (numbers may not add up due to rounding)

## Total Housing Starts



## Value of Building Permits



## Dwellings

<b>Occupied Private Dwellings by Type</b>	<b>1996</b>	<b>% of total</b>	<b>2001</b>	<b>% of total</b>
Apartments	0	0.00%	0	0.00%
Detached Duplexes	0	0.00%	0	0.00%
Movable Dwellings	0	0.00%	0	0.00%
Other single attached house	0	0.00%	0	0.00%
Row and semi-detached house	0	0.00%	0	0.00%
Single-detached house	145	96.67%	140	100.00%
Total number of occupied private dwellings	150	100.00%	140	100.00%
Private dwellings, owned	125	83.33%	125	89.29%
Private Dwellings, rented	20	13.33%	20	14.29%

Source: Statistics Canada 1996 & 2001 Census (numbers may not add up due to rounding)

<b>Private Dwellings by Period of Construction</b>	<b># of Dwellings</b>	<b>% of total</b>
Period of construction, before 1946	15	10.34%
Period of construction, 1946 - 1960	70	48.28%
Period of construction, 1961 - 1970	20	13.79%
Period of construction, 1971 - 1980	20	13.79%
Period of construction, 1981 - 1990	20	13.79%
Period of construction, 1991 - 2001	0	0.00%
Total number of private dwellings constructed	145	100.00%

Source: Statistics Canada 2001 Census (numbers may not add up due to rounding)

Disclaimer: Information in this profile has been provided from a variety of external sources. Although every effort has been made to ensure the accuracy, currency and reliability of the content and data, AlbertaFirst.com Ltd. accepts no responsibility in this regard.

© AlbertaFirst.com Ltd., 2006.