

Westlock

www.town.westlock.ab.ca

Welcome

On behalf of the Council of the **Town of Westlock**, I invite you to visit our community and experience all that it has to offer.

Westlock is a growing community with excellent recreational, cultural, educational and medical facilities and services to suit every member of your family, making Westlock a perfect place to raise a family, pursue a career or settle into for retirement. Our Town offers excellent shopping, restaurants, recreational activities, professional services, entertainment and cultural events.

Our Council maintains an open, "pro-business" attitude and we welcome developers and business people looking for that ideal location in which to conduct their business.

The Town of Westlock is a friendly community which combines the amenities of an urban setting with the best of country living where your family can grow and prosper in a safe and healthy environment. This atmosphere makes Westlock a great place to live, work and play.

We are proud of our Town and invite you to stop by our office at 10003 - 106 street in Westlock for information on tourism, leisure opportunities, residential development or starting a business in Westlock.

Please contact Colleen Thome [Planning & Economic Development Services Coordinator], Darrell Garceau [Town Manager] or Bruce Lennon [Mayor] at 780-349-4444, (1-866-349-4445) or info@town.westlock.ab.ca for further information.

Bruce Lennon
Mayor

Area Overview

The Town of Westlock is a growing agricultural community located in north-central Alberta. Westlock boasts a full range of professional services and is a centre for trade and commerce, services, manufacturing and production in the heart of a prime agricultural area. Westlock is a major agricultural service centre for a very large farming region.

Services abound for the travelling public, with numerous motels and hotels, restaurants, a fully-serviced campground within town limits, shopping centres and recreational opportunities.

There are numerous benefits to living in Westlock, including a wide variety of neighbourhoods and homes to choose from, all within easy access to schools, parks and playgrounds. Home prices are considerably lower than in Edmonton. Our community offers quality education, excellent health care services and facilities, and a wide range of social and recreational opportunities. In addition to cable TV and newspapers from Edmonton, Westlock's news is covered by one local newspaper (Westlock News) and a local A.M. radio station [1370 CFOK].

Emergency services are top-notch, with the RCMP, volunteer fire department and ambulance service stationed in town. Enhanced 9-1-1 Emergency service is available in Westlock and surrounding area. We consider our community a safe place to live and do business, having all the convenience of a large city without the accompanying crime and congestion.

Climate

Temperature: Seasonal Averages

January -16.5C

April 3.2C
July 16.1C
October 4.6C

Total Annual Precipitation: 52 cm
Rain: 40 cm
Snow 121 cm

Frost free days: 124

Hours Sunshine / year: 2,264

Community Services

Municipal

Town of Westlock
10003 - 106 Street
Westlock, Alberta
T7P 2K3
Telephone: 780-349-4444

Westlock Community Recreation Centre
Westlock Municipal Library
Westlock Fire Department
Westlock Regional Ambulance
Westlock Visitor Information Centre

Provincial

Agriculture
Family and Social Services
Mental Health
Provincial Court
Medical Examiner - Coroner

Federal

Canada Post
Agriculture Canada
Royal Canadian Mounted Police

Local

Churches - most major denominations represented
Youth Programs
Museums
Sports & Recreation clubs and agencies
Seniors Programs
Service Clubs - most represented
AADAC, AI-Anon, AA, Block Parents, Each One Teach One, Food Bank, Meals on Wheels, Westlock Resource Centre, Child Care Society (day care & day homes), Thrift Shop, Environment Society, Westlock Independence Network, Playschool, Victim Services, Golden Age Club, Senior's Drop In Centre etc.

Community Lifestyle

Recreation

The Town of Westlock boasts a number of recreational and cultural facilities, as well as nearby resort areas.

Recreational facilities include the Westlock Community Recreation Centre, Jubilee Arena, Westlock Bowl, Westlock Curling Rink, Tawatinaw Valley Ski Hill (20 miles East), Edmonton Skydive Centre (operating out of Westlock Airport, 4 miles East), Westlock Golf Course (3 miles West), Altador Athletic Field, Rotary Trail 2000, Westlock Action Sports Park (Skateboard Park), Motocross Track and numerous parks and playgrounds.

Cultural facilities and organizations include the Cultural Arts Theatre Society, Dream Merchants Theatre, Westlock Art Club, Westlock Community Singers, Westlock Cultural Arts Society, Westlock Drama Society, Westlock Ukrainian Dance Society, Silhouette Dance Studio, Canadian Tractor Museum and the Westlock & District Historical Society & Museum.

Resort Areas include Mountie Park [fully serviced campground in town] and Rainbow Park [day use area located 6.5 km east and 1.5 km south].

Long Island Lake Municipal Campground is located 38.6 kms north of Westlock. Cross Lake Provincial Provincial Park is 56.3 kms north and Thunder Lake is 18 kms west of Barrhead.

Community Organizations

Westlock has a wide range of sports clubs, including curling, minor and adult hockey, cross-country skiing, downhill skiing, gymnastics, badminton, figure skating, flying, golf, horseshoe pitching, judo, minor baseball and girls softball, and skydiving. There are also a number of cultural and community service organizations.

Religious Services

- Church of the Nazarene
- Community Church of Christ
- Jehovah's Witnesses
- Peace Lutheran
- Open Doors Church
- St. Mary Roman Catholic Church
- St. Philip's Anglican Church
- St. Volodymyrus Ukranian Orthodox Church
- Trinity Lutheran
- Victory Life Church
- Westlock & District Ministerial Assoc.
- Westlock Alliance Church
- Westlock Baptist Church
- Westlock Gospel Chapel
- Westlock Pentecostal Tabernacle
- Westlock United Church
- Worldwide Church of God

Special Annual Events/Attractions

FEBRUARY

-Pembina Drift Busters "Snowarama" for Easter Seals

APRIL

-Westlock-Barrhead Agri-Business Trade Show

MAY

-Westlock Art Club Spring Show & Sale

-Chamber of Commerce Spring Retail Promotion

JUNE

-Vintage Tractor & Machinery Annual Show (1st weekend)

-Alberta Trappers Association Annual Conference

JULY

-Canada Day Celebrations

-Wheels of Class Show & Shine

-Pembina Garden Club Show & Sale

-Judging of Local Gardening Contests

AUGUST

-Fly-In/Drive-In Breakfast & Air Show

-Westlock Agricultural Society Annual Agricultural Fair
(3rd weekend)

OCTOBER

-Snowmobile Grass Drags (1st Sunday)

NOVEMBER

-Christmas Craft Sale

-Chamber of Commerce Christmas Lite-Up Promotion

3rd Sunday of each month: Westlock Country Jamboree, 1:00 to 5:00 p.m. at the Westlock & District Memorial Hall

Hospitality

Accommodation

Highway Motor Inn

Southview Motel

West 18 Inn

Westlock Hotel

Westlock Inn

Restaurants

Westlock boasts a large number and variety of restaurants, with cuisines ranging from fast food to deli, Chinese, Italian and Western. From the casual to the elegant, there is a dining experience to suit every taste.

Economic Base

The economic base in Westlock consists of agriculture, retail, oil and gas, lumber and coal. The Town is located in the centre of one of the most prosperous mixed farming areas in Alberta. It is also a service centre for a much larger area in which agriculture, oil, gas and lumber play an important role.

Westlock is home to a wide range of manufacturers and exporters.

The major industries in the community range from agricultural products and services, to recreational and consumer products.

Economic Facts

Westlock is an ideal location for industry and business, with fully serviced industrial parks located on the West and East ends of

town, a thriving downtown commercial sector, and a large highway commercial area. Westlock boasts three ideally situated shopping centres, two at the junction of highways 18 and 44 and one in the downtown commercial area.

Major Businesses-----Products/Services

Alberta Ag-Industries Ltd.----- Silage/Hay Storage Products
Alberta Custom Tee Ltd.----- Copper Headers
Westlock Terminals ----- Purchase & Ship Grain
Amity Ag-Enterprises Ltd.----- Silage bagging machines, recycling machines
Atlantic Industries Ltd.----- Culverts
Circle K Welding ----- Oilfield Tanks, Tank Frames
Jubilee Feedlot ----- Slaughter Cattle
Lehman Trikes Inc.----- Motorcycle Conversion Kits
Polar Bear Water Distillers Mfg. Co.----- Water Distillers
Precision Design & Mfg. Ltd. ----- Sheet Metal Mfg.
SWS Truck Box & Hoist Ltd.----- Trailers, Grain & Gravel Boxes
Swan Apiaries ----- Honey Production
Taurus Agra-Tron & Custom Products -----Livestock Equipment
Wabash Manufacturing Inc. ----- Oilfield Truck Tanks, Tanker Trailers
Water Pure & Simple ----- Purified Bottled Water

Financial Institutions

Bank of Montreal
Bank of Nova Scotia
Royal Bank
Common Wealth Credit Union
TD Canada Trust
Alberta Treasury Branch
Farm Credit Canada

Education

Westlock is part of the Pembina Hills Regional Division #7, headquartered in Barrhead [telephone: 780-674-8500], and the Evergreen Catholic Separate Regional Division #2, headquartered in Spruce Grove [telephone: 780-962-5627].

Daycare/Nursery

The Westlock Child Care Society provides day care, family day homes, special needs, after-school care and summer out-of-school care services.

Public

The public schools located in Westlock include Westlock Elementary School [K-6] and R.F. Staples High School [7-12]. Outside of town are the Sunniebend Hutterite School [K-9] and the Hillman Colony School [1-9].

Separate

The separate school in Westlock is Saint Mary School, which provides education for Grades K to 12.

Emergency Services

EMERGENCY 9-1-1 SERVICE AVAILABLE.

Fire Protection

20-member volunteer fire department
[administration telephone: 780-349-4444].

Police Services

Local detachment of the Royal Canadian Mounted Police [RCMP]
[administration telephone: 780-349-4491].

Ambulance Services

Westlock Regional Ambulance Authority [administration telephone: 780-349-4444].

Health Care

The Town of Westlock has a wide range of health facilities, including an acute and long-term care hospital [Westlock Health Care Centre], 3 medical clinics [Associate Medical Clinic, Pembina Medical Clinic, Bauer Clinic], 1 health unit [Aspen Health Services] and 1 nursing home [Westlock Long Term Care Centre].

Westlock is located within Aspen Regional Health Authority #11. The Aspen RHA Head Office is located in Westlock.

Key Contacts for Business Development

Municipal

Town of Westlock
10003-106 Street
Westlock, Alberta
T7P 2K3
Tel: 780-349-4444
Fax: 780-349-4436
Email:info@town.westlock.ab.ca

Colleen Thome, Planning & Economic Development Services Coordinator
[Darrell Garceau](#), Town Manager
Bruce Lennon , Mayor

Provincial

David Pattison
Director, Edmonton Region
Regional Development Branch
Alberta Economic Development
5th Floor, Commerce Place
10155 - 102 Street
Edmonton, AB T5J 4L6
Tel: 780-427-6648
Fax: 780-422-5804
E-Mail: david.pattison@gov.ab.ca
(updated May 10, 2004)
Jan Couper, Client Services Representative
Tel: 780-427-6291
E-Mail: jan.couper@gov.ab.ca

Hon. Ken Kowalski
Member of the Legislative Assembly
MLA Barrhead-Westlock Constituency

Constituency Office
5110 - 50 Avenue
Barrhead
T7N 1A4
Phone: (780) 674-3225
Fax: (780) 674-6183
barrheadmorinvillewestlock@assembly.ab.ca

Legislature Office
#325 Legislature Building
10800 - 97 Avenue
Edmonton
T5K 2B6
Phone: (780) 427-2464
Fax: (780) 422-9553

Federal (Updated May 2006)

MP-Westlock--St. Paul, Alberta
STORSETH, Brian (Conservative)

Parliamentary Address
House of Commons
Ottawa, Ontario
K1A 0A6
Telephone: (613) 996-1783
Fax: (613) 995-1415
E-Mail: Storseth.B@parl.gc.ca

Constituency Address
Address pending, Alberta

Location

The Town of Westlock is located at the junction of primary highways #18 and #44 in Westlock County in north-central Alberta. It is just 85 km north of Edmonton on Highway 44 (formerly Secondary 794) accessible via the Yellowhead West of Edmonton, or 11 km West of the junction of Highway 2 North and Highway 18.

Post Secondary Education

WESTLOCK & DISTRICT ADULT LEARNING CENTRE SOCIETY offers programs and courses by the following:

Alberta Vocational College
Pembina Educational Consortium (programs from Mount Royal College, S.A.I.T., N.A.I.T., Grant MacEwan Community College, Athabasca University, Red Deer College, University of Alberta, University of Calgary, Norquest College and others).
General Interest Courses
Computer Courses
Promotion of courses offered by other community groups and agencies, e.g. Family & Community Support Services, Art Club,

Photography Club, Town of Westlock Recreation Department programs, Westlock County programs, Tawatinaw Community Futures Development Corporation, Aspen Regional Health Authority #11, Adult Literacy Program, Alberta Distance Learning Centre (Barrhead).

Taxation

Tax Rates (2006)

Residential 15.6146
Multi-Residential 19.1146
Non-Residential - Improved 26.6211
Non-Residential - Vacant 30.6211
Farmland 24.5119
Machinery and Equipment 20.1728

	<u>Residential/Farmland</u>	<u>Non-Residential</u>
2006		
Municipal Tax Rate	11.5550	19.6728
Education - Alberta School Foundation Fund Tax Rate	4.5010	7.0123
Seniors Lodge Accommodation Tax Rate		

Transportation

Air Service

Westlock Municipal Airport is located 7 km East of town limits. The airport has a 1,036.58 metre (3,000 ft.) runway with 200' over-run at each end and all weather facilities. The nearest commercial and air freight services are at the Edmonton International and Municipal Airports, 85 km south.

Rail Service

Westlock is served by a Canadian National Railways secondary main line. Spur trackage is available.

Highways

Highways 18 and 44 intersect within town limits. The junction of Highway 2 and Highway 18 is located 11 km east of town limits.

Trucking Firms

- Barrhead Truck (Division of Westlock Transport (1983) Ltd.)
- Bedrock Trucking
- Curley's Transport & Equipment Ltd.
- Hay Exchange, The
- Pee Wee Transport Ltd.
- Pembina Valley Trucking
- Roberge Bros. Transport Ltd.
- Soocce Cattleliners Ltd.
- Stan Schmode Holdings
- Westlock Movers

- Westlock Pony Express

Bus Services

Greyhound Bus Lines provide regularly scheduled inter-community service to Edmonton and other centres.

Couriers and Taxis

Taxi services: Knightline Taxi, Bros.cabs

Couriers: Westlock Pony Express, Greyhound Courier Express, Priority Courier and numerous others out of Edmonton (Loomis, Purolator, etc.).

Utilities

Electrical Power

Fortis Alberta

320 - 17th Ave. S.W.

Calgary, Alberta

T2S 2V1

Telephone: 1-800-667-2345

Natural Gas

AltaGas Utilities Inc.

5509-45 Street

Leduc, Alberta

T9E 6T6

Telephone: 1-866-222-2067

780-349-4494 (Westlock office)

Telephone

Telus Corporation

Box 2411

Edmonton, Alberta

T5J 2S9

Telephone: 310-4248 (780) 498-7300

Water Supply

Town of Westlock

10003-106 Street

Westlock, Alberta

T7P 2K3

Telephone: (780) 349-4444

The source of water is the Pembina River. The reservoir capacity of the town, measured in treated substance, is 4,546 cubic metres. The Town's reservoir design capacity is 10,080 cubic metres.

Water billings are issued every second month.

Residential users are charged \$65.14 every two months plus the applicable rate per cubic meter for consumption of over 20 cubic meters. This rate includes water supply, sewer services, garbage collection, landfill maintenance and infrastructure replacement surcharge. The minimum bi-monthly rate for multi-family dwellings is \$38.78 every two months and businesses is \$48.14 every two months as municipal garbage collection fees do not apply.

Waste Management

Sewage treatment is provided by a series of lagoons consisting of 4 anaerobic, 2 aerobic and 2 long-term storage cells. Sewage billings are issued every second month as part of the water bill. The rate for sewage treatment is 30 percent of the total charge for water consumption.

Garbage collection is billed every second month, also on the water bill. Residential garbage is collected weekly. Businesses and apartment buildings make private arrangements for garbage collection. The Westlock Regional Landfill is located 1 mile east and 1 mile south of town limits, and includes recycling facilities.

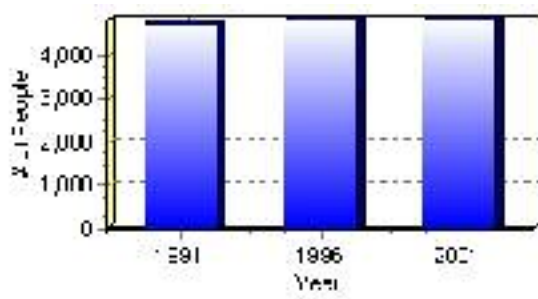
Population

Total Population

Population 2004*	4,820
Population 2003*	4,820
Population 2002*	4,819
Population 2001**	4,820
Population 2000*	4,817
Population 1996**	4,817
Population 1991**	4,719
Population % change 1991-1996	2.03%
Population % change 1996-2001	0.04%

* Source: Official Population List, Alberta Municipal Affairs
** Source: Statistics Canada 1991, 1996, & 2001 Census

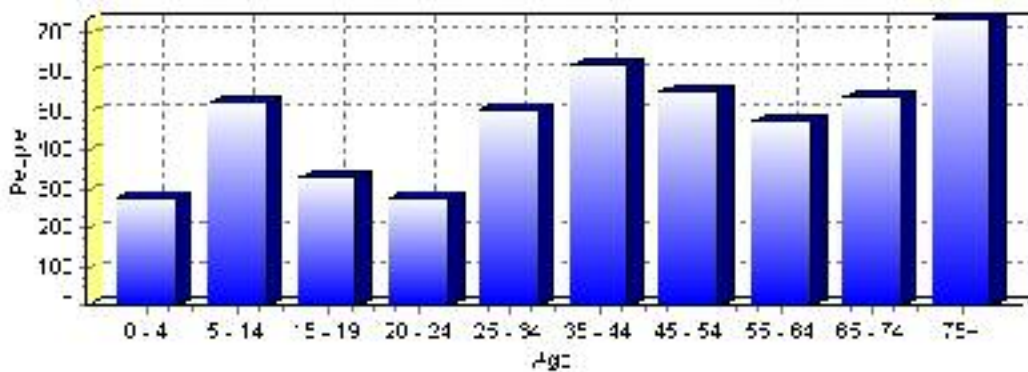
Total Population 1991-2001



Population by Age and Gender	1996 Male	1996 Female	1996 Total	2001 Male	2001 Female	2001 Total
Age 0 - 4	165	130	295	140	135	275
Age 5 - 14	330	315	645	280	240	520
Age 15 - 19	175	155	330	170	160	330
Age 20 - 24	130	135	265	140	140	280
Age 25 - 34	275	295	570	260	245	505
Age 35 - 44	320	325	645	295	320	615
Age 45 - 54	230	240	470	265	285	550
Age 55 - 64	165	230	395	215	260	475
Age 65 - 74	225	315	540	220	315	535
Age 75 and older	250	410	660	270	465	735
Total All Persons	2,260	2,560	4,820	2,245	2,575	4,820

Source: Statistics Canada 1996 & 2001 Census (numbers may not add up due to rounding)

Westlock Population by Age Group (2001)

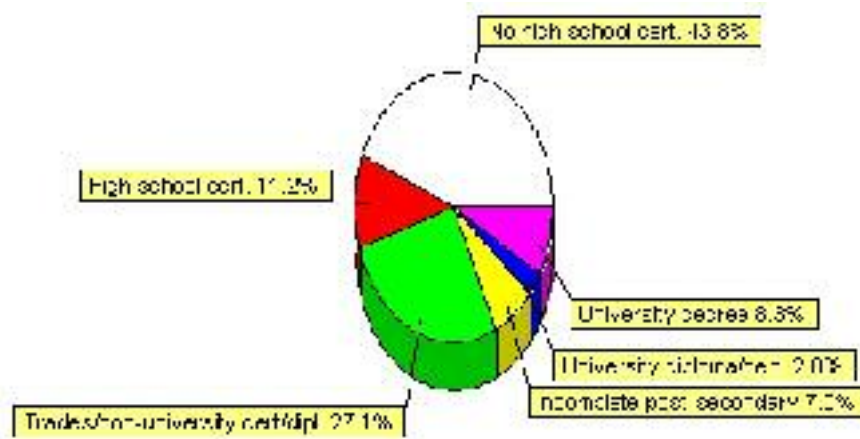


Education Statistics

Highest level of schooling for Population 20yrs and older	2001	%
People without high school certificates	1,505	43.81%
People with high school certificates	385	11.21%
People with trades or non-university certificate or diploma	930	27.07%
People with post-secondary education (not completed)	240	6.99%
People with university diploma/certificate	95	2.77%
People with university degree	285	8.30%
Total Population 20 years and older	3,435	100.00%

Source: Statistics Canada 2001 Census (numbers may not add up due to rounding)

Westlock Highest Level of Schooling 2001



Population with Post Secondary Qualifications	1996	%	2001	%
Agriculture and biological sciences	95	7.48%	145	10.94%
Commerce, management and business administration	150	11.81%	210	15.85%
Educational, recreational and counseling services	175	13.78%	200	15.09%
Engineering and applied science tech. and trades	405	31.89%	355	26.79%
Engineering and applied sciences	0	0.00%	0	0.00%
Fine and applied arts	55	4.33%	55	4.15%
Health professionals, science and technologies	240	18.90%	200	15.09%
Humanities and related fields	35	2.76%	55	4.15%
Mathematics and physical sciences	20	1.57%	30	2.26%
Social sciences and related fields	90	7.09%	65	4.91%
Other and/or no specialization	0	0.00%	0	0.00%
Total people with post secondary qualifications	1,270	100.00%	1,325	100.00%
Females with post-secondary qualifications	660	51.97%	675	50.94%
Males with post-secondary qualifications	610	48.03%	650	49.06%

Source: Statistics Canada 1996 & 2001 Census (numbers may not add up due to rounding)

Labour Force

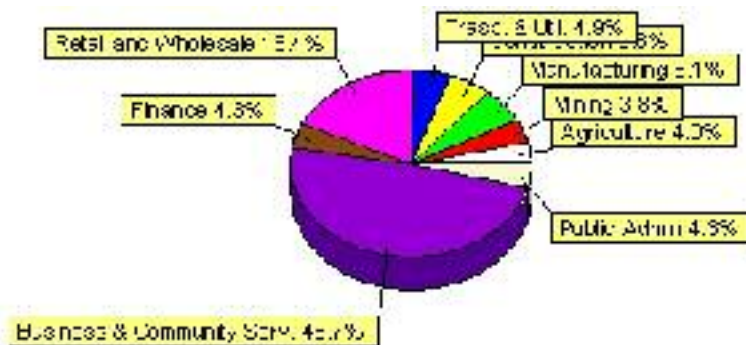
Labour force by activity	1996	2001
In the labour force, both sexes	2,190	2,245
Not in the labour force, both sexes	1,455	1,515
Total population 15 and over	3,645	3,765
Employed, both sexes	2,035	2,080
Unemployed, both sexes	155	170
Participation rate, both sexes	60.00%	60.00%
Unemployment rate, both sexes	7.00%	8.00%

Source: Statistics Canada 1996 & 2001 Census (numbers may not add up due to rounding)

Labour Force by Industry Division	1996	% of total	2001	% of total
Agriculture	95	4.39%	90	4.04%
Mining	80	3.70%	85	3.81%
Manufacturing	125	5.77%	135	6.05%
Construction	175	8.08%	125	5.61%
Transportation. & Utilities	125	5.77%	110	4.93%
Retail and Wholesale	530	24.48%	410	18.39%
Finance	85	3.93%	95	4.26%
Business & Community Services	775	35.80%	1,085	48.65%
Public Administration	85	3.93%	95	4.26%
Total All Industries	2,165	100.00%	2,230	100.00%

Source: Statistics Canada 1996 & 2001 Census (numbers may not add up due to rounding)

Westlock Labour Force By Industry - 2001



Labour Force by Major Occupational Groups	1996	%	2001	%
Management occupations	200	9.24%	170	7.62%
Business, Finances and administrative occupations	315	14.55%	390	17.49%
Natural and applied sciences and related occupations	50	2.31%	10	0.45%
Health occupations	145	6.70%	180	8.07%
Occupations in social science; education; government and religion	145	6.70%	185	8.30%
Occupations in art; culture; recreation and sport	30	1.39%	30	1.35%

Sales and service occupations	640	29.56%	600	26.91%
Trades; transport; equipment operators and related occupations	395	18.24%	435	19.51%
Occupations unique to primary industry	155	7.16%	170	7.62%
Occupations unique to processing; manufacturing and utilities	85	3.93%	60	2.69%
Occupations not elsewhere classified	20	0.92%	15	0.67%
Total - All Occupations (major groups)	2,165	100.00%	2,230	100.00%
Females - All Occupations	1,005	46.42%	1,065	47.76%
Males - All Occupations	1,160	53.58%	1,165	52.24%

Source: Statistics Canada 1996 & 2001 Census (numbers may not add up due to rounding)

Income

Family Income (Number of Families)	1996	%	2001	%
less than \$19,999	90	8.37%	135	12.86%
\$20,000 - \$39,999	360	33.49%	455	43.33%
\$40,000 - \$59,999	280	26.05%	230	21.90%
\$60,000 and over	345	32.09%	315	30.00%
Total number of families	1,075	100.00%	1,135	108.10%
Average family income	\$54,480		\$53,795	
Median family income	\$47,491		\$45,700	

Source: Statistics Canada 1996 & 2001 Census (numbers may not add up due to rounding)

Household Income (Number of Households)	1996	%	2001	%
less than \$19,999	625	32.38%	530	25.98%
\$20,000 - \$39,999	585	30.31%	670	32.84%
\$40,000 - \$59,999	350	18.13%	315	15.44%
\$60,000 and over	125	6.48%	520	25.49%
Total number of households	1,930	100.00%	2,040	100.00%
Average household income	\$40,135		\$43,660	
Median household income	\$29,324		\$33,809	

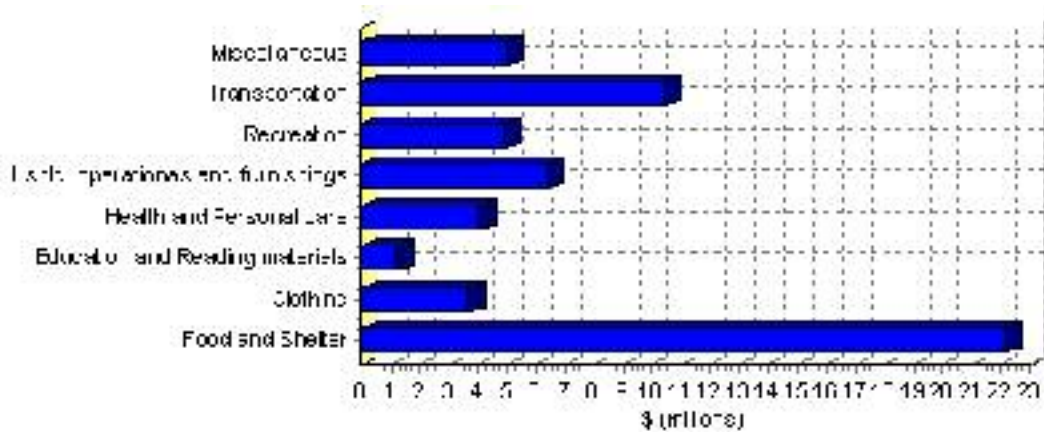
Source: Statistics Canada 1996 & 2001 Census (numbers may not add up due to rounding)

Family Expenditure

Expenditure Category	1992	% of total	1996	% of total
Food and Shelter	\$18,772,610	38.02%	\$22,173,945	38.14%
Clothing	\$3,250,415	6.58%	\$3,717,035	6.39%
Education and Reading materials	\$944,140	1.91%	\$1,236,823	2.13%
Health and Personal care	\$3,132,635	6.34%	\$4,071,913	7.00%
Hshld. operations and furnishings	\$5,395,050	10.93%	\$6,434,706	11.07%
Recreation	\$3,735,865	7.57%	\$4,985,513	8.58%
Transportation	\$10,126,620	20.51%	\$10,470,558	18.01%
Miscellaneous	\$3,989,770	8.08%	\$5,048,834	8.68%
Total Current Consumption	\$49,373,015	100.00%	\$58,139,327	100.00%
Total # of Households	1,880		1,931	
Average Consumption per Household	\$26,262		\$30,108	

Source: Statistics Canada Family Expenditure Survey 1992 & 1996 (numbers may not add up due to rounding).

Westlock Family Expenditures (1996)

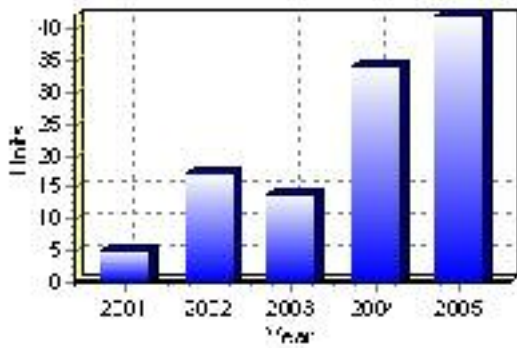


Building Permits

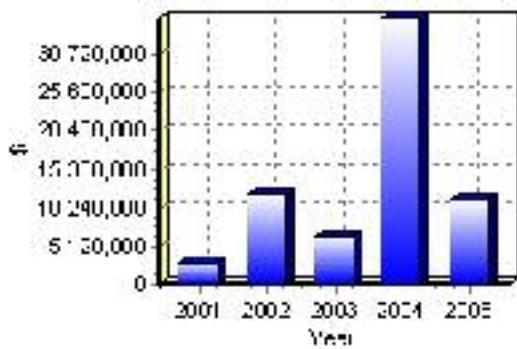
Total Building Permit Values	2001	2002	2003	2004	2005
Building Permits Value, Commercial	\$1,096,000	\$5,034,000	\$2,921,000	\$4,600,000	\$5,831,000
Building Permits Value, Industrial	\$830,000	\$51,000	\$974,000	\$1,251,000	\$1,190,000
Building Permits Value, Institutional	\$592,000	\$5,000,000	\$5,000	\$26,800,000	\$0
Building Permits Value, Residential	\$496,000	\$1,955,000	\$2,619,000	\$2,894,000	\$4,306,000
Building Permits Value, Total	\$3,014,000	\$12,040,000	\$6,519,000	\$35,545,000	\$11,327,000
Total Housing Starts	5	17	14	34	42

Source: Statistics Canada 2000-2004 Building Permits (numbers may not add up due to rounding)

Total Housing Starts



Value of Building Permits



Dwellings

Occupied Private Dwellings by Type	1996	% of total	2001	% of total
Apartments	340	17.62%	365	17.89%
Detached Duplexes	15	0.78%	30	1.47%
Movable Dwellings	130	6.74%	115	5.64%
Other single attached house	0	0.00%	0	0.00%
Row and semi-detached house	55	2.85%	100	4.90%
Single-detached house	1,395	72.28%	1,430	70.10%
Total number of occupied private dwellings	1,930	100.00%	2,040	100.00%
Private dwellings, owned	1,355	70.21%	1,395	68.38%
Private Dwellings, rented	575	29.79%	645	31.62%

Source: Statistics Canada 1996 & 2001 Census (numbers may not add up due to rounding)

Private Dwellings by Period of Construction	# of Dwellings	% of total
Period of construction, before 1946	180	8.82%
Period of construction, 1946 - 1960	220	10.78%
Period of construction, 1961 - 1970	445	21.81%
Period of construction, 1971 - 1980	695	34.07%
Period of construction, 1981 - 1990	295	14.46%
Period of construction, 1991 - 2001	205	10.05%
Total number of private dwellings constructed	2,040	100.00%

Source: Statistics Canada 2001 Census (numbers may not add up due to rounding)

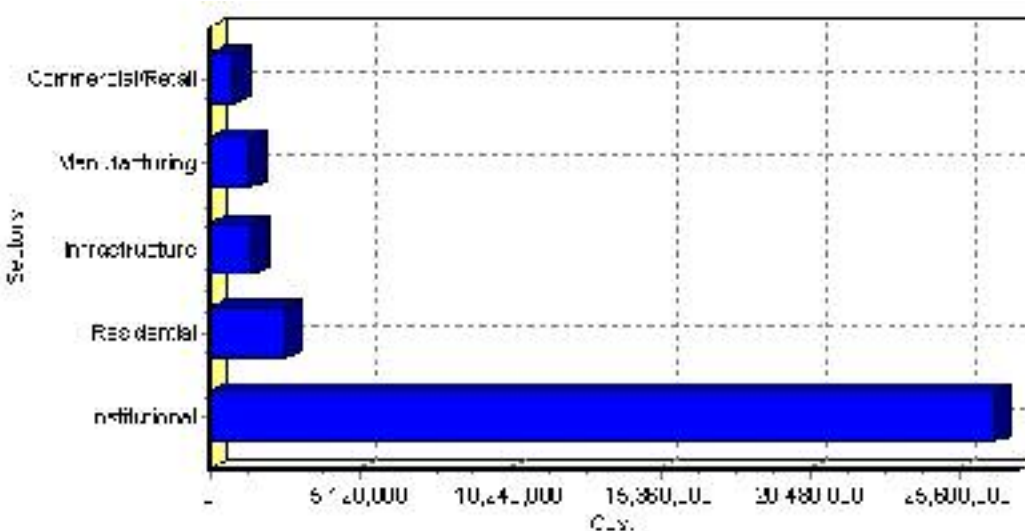
Projects

Summary of Projects in Westlock as of September 2006

Project Sector	Number of Projects	Project Cost
Institutional	1	\$26,800,000
Residential	2	\$2,600,000
Infrastructure	1	\$1,462,000
Manufacturing	1	\$1,400,000
Commercial/Retail	2	\$805,000
Total	7	\$33,067,000

This inventory lists projects in Alberta that have recently been completed, are under construction, or are proposed to start construction. Not all projects are listed due to reasons of confidentiality and/or due to information not being available at the time of printing. Project data is obtained from public information sources, where possible, this data has been verified with the project proponent/developer, users of the Inventory may wish to confirm project data with the proponent/developer. The inventory does not breakdown project expenditures by any given year. The cost of a project is the value of expenditures expected over all phases of project construction, which may span over two or more years. Cost of projects listed in the Inventory are estimated values only. Source: Alberta Economic Development, 2004.

Value of Projects by Sector (as of September 2006)



Project Status	Number of Projects	Project Cost
Proposed	1	\$505,000
Under Construction	6	\$32,562,000
Total	7	\$33,067,000

This inventory lists projects in Alberta that have recently been completed, are under construction, or are proposed to start construction. Not all projects are listed due to reasons of confidentiality and/or due to information not being available at the time of printing. Project data is obtained from public information sources, where possible, this data has been verified with the project proponent/developer, users of the Inventory may wish to confirm project data with the proponent/developer. The inventory does not breakdown project expenditures by any given year. The cost of a project is the value of expenditures expected over all phases of project construction, which may span over two or more years. Cost of projects listed in the Inventory are estimated values only. Source: Alberta Economic Development, 2004.

Largest Projects in Westlock as of September 2006

Company Name	Project Description	Project Location	Project Cost	Construction Schedule	Status
Aspen Regional Health Authority	Continuing Care Centre	Westlock	\$26,800,000	2004-2006	Under Construction
Skyriders Development Ltd.	5 Plex Condo Development	Westlock	\$1,500,000	2006-2006	Under Construction
Town of Westlock / E-Construction Ltd.	Road Reconstruction / Paving	Westlock	\$1,462,000	2006-2006	Under Construction
Alberta Custom Tee	Addition with Offices	Westlock	\$1,400,000	2006-2006	Under Construction
Whisselville Apartments	30 Suite Apartment Building	Westlock	\$1,100,000	2006-2006	Under Construction
TDL Group Corporation	Demolition / Construction - Eating & Drinking Establishment	Westlock	\$505,000	-	Proposed
Westlock Shopping Centre	Renovations / Car Wash & 3 Retail Bays	Westlock	\$300,000	2006-2006	Under Construction

Disclaimer: Information in this profile has been provided from a variety of external sources. Although every effort has been made to ensure the accuracy, currency and reliability of the content and data, AlbertaFirst.com Ltd. accepts no responsibility in this regard.

© AlbertaFirst.com Ltd., 2006.