

# Vegreville

[www.vegreville.com](http://www.vegreville.com)

## Welcome



**Welcome** to our community! The Town of Vegreville is situated about an hour east of Edmonton on the TransCanada Yellowhead Highway. It is in the heart of Kalyna Country and the Lakeland Tourist area.

We are very proud of our community which is mainly an agricultural area and also houses companies such as ATCO Gas, ATCO Electric, TELUS, and TransCanada Pipelines Ltd. The Town has an excellent source of water, a railway and a **fully operational airport** as well as being situated next to a four-lane divided highway. The business centre for Northeastern Alberta, Vegreville has a trading area population of 13,000. There's no better place to operate your business -- transportation, location, services -- *we've got it.*

Quality of life in our community is excellent due to housing, recreation facilities, and a lively Social Centre with a seating capacity of 1,000 for performances or 800 for banquets, as well as a clean environment, quality education, and health care. Vegreville features a host of **things to see and do**, from a visit to our World's Largest Pysanka (Ukrainian Easter Egg), which is a unique tourist attraction viewed by many world-wide visitors year round, to the enjoyment of one of our many annual events such as the well known Ukrainian Pysanka Folk Festival in July or the Exhibition & Fair in August.

We invite you to move to Vegreville or relocate a business here. Our friendly business community has all the amenities and will be able to accommodate your individual needs. Vegreville -- Something for Everyone. Come out and see for yourself!

Mayor and Council  
Town of Vegreville





## Area Overview

Vegreville is a vibrant community; rich in cultural heritage and progressive in terms of facilities, municipal government, and above all, people. Friendly and vital, it is an excellent place to live with reasonable housing/rental prices, top-class educational, medical, recreational, and cultural facilities and a wide range of retail services. Given its proximity to Edmonton, the town's residents enjoy the best of both worlds -- a clean, safe and affordable place to live with the specialized services and attractions of a large urban centre less than an hour drive away.

Vegreville is in the heart of central Alberta, on the twinned Trans-Canada Yellowhead Highway. Connections south to Calgary are made via Highway 2. Highway 36, a few miles east of the Town, is a major north-south corridor in eastern Alberta. A CNR rail line runs through Vegreville. The Town is also serviced by a modern airport with complete facilities including a lighted 4000 foot runway. For more information on this undiscovered gem among central Alberta's community airport facilities, visit the Town's website at [www.vegreville.com](http://www.vegreville.com).

With a population of approximately 5,400 Vegreville offers a complete range of services, a friendly small-town atmosphere, and is within close proximity to Edmonton. All these features make the Town an attractive place to reside.

The Town has a relatively low and stable tax rate. Housing opportunities exist; there are many serviced lots at very reasonable prices.

Vegreville has excellent, first class educational, medical, cultural, and recreational facilities. The showpiece of the Town's recreational facilities is an indoor Aquatic and Fitness Centre. The complex contains a leisure pool, twister waterslide, racquetball court, whirlpool, sauna, fitness room, and cultural & dance studio. A modern, full-size indoor ice arena is attached to the Aquatic and Fitness Centre. Nearby is the MultiPlex Building and Curling Rink.

In addition to the excellent leisure facilities, recreational opportunities in the immediate area are numerous. The Town's facilities encourage family participation, allow for year-round recreation programs and attraction of major sports tournaments. Elk Island National Park and Beaverhill Lake Sanctuary are west of Town. The lakes to the north of Vegreville are renowned for their walleye, pike, trout, and perch and many are excellent for swimming or boating.

Vegreville is noted for its multicultural activities, in particular the Ukrainian Pysanka Folk Festival held in early July. Community agencies, societies, service clubs, and the various community facilities are the hub of activity throughout the year.

A place to worship for most faiths is located within the Town and rural area. It is not uncommon for neighbours to lend a helping hand and thus, the churches play an important role in improving community life and adding to the attractiveness of living in Vegreville.

## Climate

Average Temperatures

J F M A M J J A S O N D

Maximum -10 -6 -1 10 18 21 23 22 16 11 0 -8

Minimum -21 - 18 -12 -2 3 7 10 8 3 -1 -11 -19

Mean -15 -12 -6 3 10 14 16 15 10 4 -6 -13

Precipitation

J F M A M J J A S O N D

Rain (mm) 2 1 2 8 36 73 83 61 41 10 3 1

Snow (cm) 15 12 13 8 1 0 0 0 1 5 12 18

Total (mm) 17 12 14 16 38 73 83 61 41 15 15 18

Snow Cover(cm) 22 24 16 1 0 0 0 0 0 1 8 17

## Community Services

### Municipal

Town of Vegreville

4829 - 50 Street, Postal Drawer 640

Vegreville, Alberta

T9C 1R7

Telephone: (780) 632-2606

Fax: (780) 632-3088

Municipal Library

### Provincial

Agriculture

Fish and Wildlife

Medical Examiner-Coroner

Mental Health

Provincial Court

### Federal

Agriculture Canada

Canada Post

Royal Canadian Mounted Police

## Community Lifestyle

### Recreation

Recreation facilities within Vegreville are plentiful and second-to-none, featuring an Aquatic and Fitness Centre with pool & 177 foot twister waterslide, whirlpool, sauna, fitness room, squash and racquetball court, and dance/aerobics studio. A full-sized ice arena is attached to the Aquatic and Fitness Centre. Nearby is our Multi-Plex Centre with Curling Rink, built in 1992. For banquets and performances, the Social Centre has a seating capacity of 1,000.

Parks and picnic sites are plentiful, including Elks Park, with the world-renowned Pysanka, trout-stocked pond, walking paths, gazebos, playgrounds and campgrounds. Nearby is the Rotary Peace Park featuring a "Peace Grove" of twelve trees, dedicated to promoting human harmony. Just behind the grove is an outdoor picnic and play area.

In addition, numerous facilities such as the movie theatre, bowling alley, golf course, driving range, shooting range, mini-golf, Rainbow Park Reservoir, ball diamonds, soccer fields, basketball court, tennis courts, outdoor volleyball courts, museum, exhibition grounds, and Seniors Citizen Centre provide entertainment opportunities for all ages.

Outside of Town, the lakes to the north provide excellent fishing, boating and outdoor recreation. To the west are Elk Island National Park, the Beaverhill Lake Bird Sanctuary, the Ukrainian Cultural Heritage Village, the Basilian Father's Museum in Mundare, and the Pioneer Museum at Shandro. In addition, Vegreville is part of the Kalyna Country Eco-Museum, an association of communities promoting and developing a "living museum," with attractions such as regional tours and the interpretation and development of historic sites.

### **Community Organizations**

Community groups located in Vegreville include: Alberta Women's Institute, Alcoholics Anonymous, Al Anon, Alateen, Crisis Association of Vegreville, Veg-Al Drug Society, B.P.O.E. [Elks], Joan of Arc #57 Order of the Eastern Star, Kidsport, Kinsmen, K-40 and Kinette Clubs, Knights of Columbus, Royal Canadian Legion Ladies Auxiliary, Order of the Royal Purple, Rotary International, Royal Canadian Legion, Vegreville Agricultural Society, Vegreville Cancer Society, Vegreville Lion's Club, Vegreville Minor Soccer Association, and the Vegreville Preschool Association.

Youth groups located in Vegreville include: Boy/Girl Scouts [including Beavers, Brownies, Cubs, Guides, Pathfinder, Venturers], Awana Boys & Girls Club, Computer Club, Figure Skating, Minor Hockey, Music for Children, Ringette, Pedal Pushers, 4-H, Ballet Club, Gymnastics Club, St. John's B-Alyve Youth Group, Ukrainian Dancing Club, Track and Field Club, Youth Bowling, Youth Curling, Youth Golfing, Vegreville Pool Sharks Swim Club, and Fiddlin' Kiddlins.

Cultural clubs include: Vegreville Cultural Association, dance clubs, music club, crafts guilds [including pottery, spinners and weavers], community band, and the Arts Council.

Social and special interest clubs include: Club 4 (singles, widows/ers, divorced), Ducks Unlimited, Fully Alive, Iron Runners Auto Club, Karate-Do, Seniors Sunshine Club, Garden Club, Trail Breakers, Flying Club, Seniors Clubs, Sno-Chasers, Special Olympics, Gymnastics Club, Badminton Club, Volleyball Association, Women's Aglow Fellowship, and WINC's (Women in Christ).

### **Religious Services**

- Vegreville Alliance Church
- Evangelical Church-Emmanuel
- St. John's Baptist Russo Greek Orthodox Church
- St. John Lutheran Church
- St. Martin's Roman Catholic Church
- St. Mary's Anglican Church
- Seventh Day Adventist Church
- Ukrainian Catholic Holy Trinity Church
- Ukrainian Orthodox Church of St. Vladimir
- Vegreville United Church of Canada
- Vegreville Kingdom Hall of Jehovah's Witnesses
- Vegreville Pentecostal Church

### **Special Annual Events/Attractions**

Vegreville's cultural, historical and agricultural societies and community organizations are active contributors to community life, sponsoring many events that provide opportunities for participation, appreciation and entertainment. Among these are the Ukrainian Pysanka Folk Festival, Agricultural Exhibition & Country Fair, Wendy Brook Music Festival, Iron Runners Car and Truck Show, Combine Crunch and Demolition Derby, Christmas Light Up & Parade, and various events sponsored by groups such as the local Arts Council, Cultural Association, Agricultural Society, Fire Department, Music and Dance Clubs, Kinettes, Kinsmen, Knights of Columbus, and the Public Library.

### **Hospitality & Accommodation**

- Alberta Hotel
- Homesteader Country Inn
- The Barn Loft Inn
- Marushka's Bed & Breakfast and Tea Room
- Vista Motel
- West-View Motel
- Wild Rose Inn

### **Restaurants**

- Alberta Hotel Restaurant
- Albert's Family Restaurant
- A & W Restaurant & Drive-Thru
- Bamboo Chopstick Restaurant
- Chin's Restaurant
- Dairy Queen
- Vegreville Golf Course
- Plaza Restaurant (in Husky Plaza Mall)
- Kentucky Fried Chicken
- Homesteader Country Inn Restaurant
- Perry's 2 for 1 Pizza & Pasta
- Station Cafe
- Subway
- The Butler
- Vito's Steak and Pizza

## **Economic Base**

Vegreville's economy is based mainly on agriculture and related services, and also on the fact that it is a central location for northeast Alberta. The farming community represents a skilled and hard-working labour force with expertise in farming as well as assembly line work, welding, and metal fabrication.

Recent modernized additions to the agricultural base of efficient facilities has added to Vegreville's competitiveness in providing grain elevators and seed cleaning plants for farming operations. A commercial feedlot, hog operations, turkey producers, a farm implement manufacturer, and dairy farms also provide a diversity in agricultural related activities.

The Town of Vegreville supports the agricultural community with a variety of services, offering residents a wide range of employment opportunities in retail, industrial, commercial, trade or professional areas. Major corporations such as TransCanada Pipelines Ltd., ATCO Electric, ATCO Gas, the Alberta Research Council, the Case Processing Centre (Federal Immigration Office) in the Town employ highly skilled technical and expert scientific research personnel. In addition, the oil and gas industry has an important role in the local economy with a number of wells located within the County of Minburn.

Vegreville is rich in many ways - tradition, services, and environment. However, Vegreville's biggest resource is its people - people with the spirit, pride, and drive to make this community truly outstanding.



## Economic Facts

A number of major corporations have offices located in Vegreville -- TransCanada Pipelines Ltd., TELUS Communications, ATCO Gas, and ATCO Electric. Private industry has flourished with examples such as Ezee-On Manufacturing and RJV Gas Field Services. The Alberta Research Council (formerly Alberta Environmental Centre) is world-renowned for its initiatives and advancements in environmental science. It also offers a number of diagnostic services. Their website address is: [www.arc.ab.ca](http://www.arc.ab.ca). Alberta Agriculture and Prairie Farm Rehabilitation Administration offices are located in the Town. As well, Vegreville is the site of a Federal Immigration Case Processing Centre which presently employs approximately 200 staff.

### Major Businesses Products/Services

- TransCanada Pipelines Ltd. - Oil and Gas
- ATCO Electric - Utility
- ATCO Gas - Utility
- Ezee-On Manufacturing Ltd. - Agricultural Implements
- RJV Gas Field Services - Oil and Gas

### Financial Institutions

- ATB Financial
- Bank of Montreal
- Battle River Credit Union
- Canadian Imperial Bank of Commerce
- TD Canada Trust

## Education

Vegreville is part of the Elk Island Public School Regional Division #14, headquartered in Sherwood Park [Telephone: (780) 464-3477 or 1-800-905-3477 and Elk Island Catholic Schools, headquartered in Edmonton [Telephone: 1-800-996-9982 Administration].

The educational system in the Town of Vegreville is excellent. Schools are operated with the philosophy that education is a joint responsibility of the student, school, and home. Parents take an active part by participating as volunteers or by providing valuable input through the local school councils. The school facilities are used extensively by the Adult Learning Council, local recreation organizations, and the community at large. Schools integrate the use of community facilities such as the curling rink, swimming pool,

tennis courts, weight room, etc. into the curriculum.

French classes starting in Grade 1 are offered, as is a Ukrainian Bilingual program. Vegreville's schools have an outstanding reputation for achievement in French, with a high percentage of students becoming French Immersion teachers. An extensive award system in the schools recognizes achievement through scholarships.

The schools also offer a broad range of career and technology studies and vocational courses, including programs in computers, automotives, building construction, electronics, business management, food preparation, and beauty culture. Also offered are comprehensive physical education/ sports programs. Transportation throughout the County and Town is available. Field trips and extra-curricular programs round out the educational experience.

Special-needs students, including the physically and mentally challenged, are integrated into our schools.

Exchange students are frequent visitors to the schools adding another aspect to the learning experience.

### **Daycare/Nursery**

Vegreville Community Daycare (not-for-profit organization) Twin Family Day Homes

### **Public**

Public schools located in Vegreville include A.L. Horton Elementary School [K-6], and Vegreville Composite Junior and Senior High School [7-12].

### **Separate**

Separate schools located in Vegreville include St. Martin's School [K-7] and St. Mary's School [8-12].

### **Other**

Nextstep Outreach School

An alternative program for 16 - 20 year olds who are not presently attending school because they have difficulty fitting into the traditional school setting. Contact Joyce Bryden, Certified Teacher, at (780) 632-7998 or email to [jbryden@telusplanet.net](mailto:jbryden@telusplanet.net).

Vegreville Literacy Network

Coordinates volunteer tutoring courses for adults who need help with basic reading, writing and math skills. Contact the office at (780) 632-6881 or mail to Box 442, Vegreville, AB T9C 1R4.

Youth Connections

Provides Career and Employment Assistant Services for youth ages 16-24 years in Vegreville and surrounding area. Contact Derrick Gladdish, Youth Connections Coordinator at (780) 632-3966 or mail to Youth Connections, Lower Level, Town Administration Building, 4829 - 50 St., Box 809, Vegreville, AB T9C 1R9; fax (780) 632-3935 or email to [ycc@vegnet.com](mailto:ycc@vegnet.com).

## **Emergency Services**

### **Fire Protection**

Vegreville is served by a 29-member and 7-junior member volunteer fire department. Training in hazardous materials incident and high angle rescue complement the fully equipped rescue unit. Rural areas are served by the Rural Fire Protection Association [Telephone: (780) 632-2254 Administration].

### **Police Services**

Vegreville is served by a 12-member local detachment of the Royal Canadian Mounted Police which includes 1 Highway Patrol officer and 1 Special Constable [RCMP] [Telephone: (780) 632-2223 Administration].

### **Ambulance Services**

Prairie Emergency Services serves Vegreville and area [Telephone: 780-632-4222 Administration].

## Health Care

Vegreville's medical and health-care facilities and services are excellent. St. Joseph's General Hospital is a 32 bed active treatment hospital (3 bed coronary care unit, 1 bed Palliative Care and 28 bed medical/surgical beds). The Hospital offers Diagnostic Services (laboratory, imaging, ultrasound), Rehab Services (physiotherapy, occupational therapy, respiratory), Pastoral Care, Cardiac Stress Testing, 6 bed Dialysis Unit, Home Monitoring (Lifeline), Family Day Home, Meals on Wheels, Regional Dysphagia Program and Specialist Clinics. [Telephone: (780) 632-2811]

Vegreville's Long Term Care Centre, immediately adjacent to St. Joseph's General Hospital, has 90 beds and provides long-term care. [Telephone: (780) 632-2871]

The Vegreville Health Unit provides a broad range of service programs including community health nursing [immunization, pre-natal classes], home health aids, speech and hearing, dental, environmental health, and volunteer programs [Friendly Visitor]. The Unit serves a wide area with sub-offices located in Lamont, Mannville, Two Hills, and Willingdon. [Telephone: (780) 632-3331]

Other medical resources include 1 nursing home, 3 senior citizens apartments, 1 senior citizens lodge (renovated in 1999), 2 assisted living complexes, 2 physiotherapy clinics, 8 doctors, 5 dentists, 2 denturists, 2 optometrists and 3 chiropractors.

Since Edmonton and Camrose are both an hours drive from Vegreville, residents can easily obtain access to specialized medical services that exist only in major centres.

## Key Contacts for Business Development

### Municipal

Town of Vegreville  
4829 - 50 Street  
Postal Drawer 640  
Vegreville, Alberta  
T9C 1R7  
Tel: (780) 632-2606  
Fax: (780) 632-3088  
Email: [vegtown@vegreville.com](mailto:vegtown@vegreville.com)  
Web Site: [www.vegreville.com](http://www.vegreville.com).

[Richard Coleman](#), Mayor

Jody Quickstad, Town Manager

Mike Webb, President  
Vegreville & District Chamber of Commerce  
Box 877  
Vegreville, AB T9C 1R9  
Phone: (780) 632-2771  
Fax: (780) 632-6958  
Email: [vegchamb@telusplanet.net](mailto:vegchamb@telusplanet.net)

[Linda Craven](#)  
Manager - Economic Development  
Economic Development Board  
5009 - 50th Avenue  
PO Box 217



Vegreville, AB T9C 1R2  
Tel: (780) 632-3891  
Fax: (780) 632-3892  
Email: [vedb@telus.net](mailto:vedb@telus.net)  
Richard Coleman, Chair

**Provincial (Updated May 2006)**

Alberta Economic Development  
Box 412  
Room 308, Provincial Building  
5025 - 49 Avenue  
St. Paul, Alberta  
T0A 3A4  
Tel: (780) 645-6358  
Fax: (780) 645-6241  
Garry Krause, Regional Manager  
Maryann Robinson, Client Service Representative

Ed Stelmach, The Hon.,  
Member of the Legislative Assembly  
Vegreville - Viking Constituency

Constituency Office  
Box 451  
4945 - 51 Avenue  
Vegreville  
T9C 1R6  
Phone: (780) 632-6840  
Fax: (780) 632-6888  
[fortsaskatchewan.vegreville@assembly.ab.ca](mailto:fortsaskatchewan.vegreville@assembly.ab.ca)

Legislature Office  
607 Legislature Annex  
9718 107 Street  
Edmonton  
T5K 1E4  
Phone: (780) 422-5384  
Fax: (780) 415-0951

**Federal (Updated May 2006)**

Leon Benoit  
Member of Parliament [MP]  
Vegreville-Wainwright Constituency

Parliamentary Address  
House of Commons  
Ottawa, Ontario  
K1A 0A6  
Telephone: (613) 992-4171  
Fax: (613) 996-9011  
E-Mail: [Benoit.L@parl.gc.ca](mailto:Benoit.L@parl.gc.ca)

Constituency Address

5004 - 49th Street, Professional Building, P.O. Box 300  
Mannville, Alberta  
T0B 2W0  
Telephone: (780) 763-6130 1-800-463-1194  
Fax: (780) 763-6132  
TTY:  
E-Mail: benoit1@parl.gc.ca

## Location

The Town of Vegreville is located in the County of Minburn #27, in the heart of Alberta. It is approximately 105 km east of Edmonton on Highway 16 [Yellowhead Highway] and 146 km west of Lloydminster.

## Post Secondary Education

There are a number of opportunities for continuing education.

### Portage College

Various diploma programs are offered by qualified staff. Low tuition rates, with minimal added fees and on-site housing and childcare are just a few of the additional services offered. For more information on programs, please call (780) 632-5420 or (780) 623-5580 or toll free (in Alberta) at 310-0000, then enter (780) 623-5580. The email address is [info@portagec.ab.ca](mailto:info@portagec.ab.ca); website address: [www.portagec.ab.ca](http://www.portagec.ab.ca). Awards and scholarships are available in all Portage College programs. Financial assistance may be available to those who qualify.

### Lakeland College

A varied curriculum in adult education is offered at its Vermilion campus. (Vermilion is only 50 minutes East of Vegreville.) An extensive range of technical and video-conferencing courses from Athabasca University, NAIT, SAIT, University of Alberta, University of Calgary, and University of Saskatchewan are also available through Lakeland College. Telephone 1-800-661-6490 for further inquiries concerning programs offered.

### VegMin Learning Network

Adult non credit courses are coordinated and educational initiatives are supported by the Adult Learning Council. Examples of some of the courses sponsored by the Council are: prenatal classes, Tai Chai, Yoga, personal and professional development, crafts, computer, and dog training. The Council works cooperatively with other community groups and agencies to offer courses based on community needs and demand. Please call (780) 632-7920 if interested in taking or teaching a course. The email address is [cmalc@vegnet.com](mailto:cmalc@vegnet.com).

## Taxation

---

	<u>Residential/Farmland</u>	<u>Non-Residential</u>
<b>2005</b>		
Municipal Tax Rate	13.8156	22.2496
Education - Alberta School Foundation Fund Tax Rate	4.2413	7.1305
Education Opted Out Tax Rate	4.2413	7.1305
Seniors Lodge Accommodation Tax Rate	.2270	.2270

---

### Mill Rates [2002]

Residential - Public 20.3646  
Residential - Separate 20.3646

## Transportation

### Air Service

The Vegreville Industrial Airport is a non-commercial facility with a 4,000 foot lighted runway, fully operational 24 hours a day, 365 days of the year (weather permitting). Located in the County of Minburn at the edge of Town, the airport is an important link in the transportation infrastructure. You are invited to visit [www.vegreville.com](http://www.vegreville.com) for more details. The nearest commercial and air freight service is available at Edmonton International and Edmonton Municipal Airports.

### Rail Service

Vegreville is served by a Canadian National Railway main line. Highways Connecting highways are the TransCanada Yellowhead Highway (Highway 16) Highway 36 and Highway 857.

### Trucking Firms

- Austin's Transport
- Dennis & Sons Water Service Ltd.
- Eastline Transfer Ltd.
- Falcon Industries
- G & R Sand and Gravel Ltd.
- Seniuk Livestock and Transport
- Tuck's Transport Ltd.
- Twin Lakes Ready-Mix & Aggregates Ltd. (2000)
- VRS Carriers Ltd.
- Willco Enterprises

### Bus Services

Greyhound Bus Lines offers regularly scheduled inter-community service (780-632-2895). Charters are available from Baydala Charters (780-632-7158).

### Couriers and Taxis

Courier services include Champagne Courier Service, Priority, Loomis, SDS Courier, and Purolator.

Central Taxi and Penny's Deliveries & Taxi provide local taxi service.

## Utilities

### Electrical Power

ATCO Electric

Box 610, 6502 - 55 Avenue

Vegreville, Alberta

T9C 1S4

Telephone: 1-800-668-2248; power outage, 24 hr. 1-800-668-5506

### Natural Gas

ATCO Gas  
Box 1237  
Vegreville, Alberta  
T9C 1S4  
Telephone: 1-888-511-7550; 24 hr. 1-800-511-3447

**Telephone**

TELUS  
4829 - 50 St.  
Vegreville, Alberta  
Telephone: toll-free 310-2255; repair service 611

**Water Supply**

The source of water is the North Saskatchewan River. Water is piped to Vegreville from Edmonton, providing an excellent water quality and ample supply that can serve a community several times its current size. The reservoir capacity, measured in treated substance, is 15,911 cubic metres.

**Waste Management**

Sewage treatment is provided by a series of lagoons consisting of 4 short and 7 long detention cells.

Residential garbage is collected weekly. There is no charge for this service.

For information on water and sewer charges or hookups in the Town of Vegreville, contact the Town of Vegreville Office at (780) 632-2606.

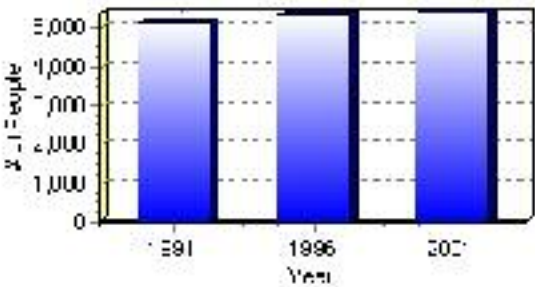
# Population

## Total Population

Population 2004*	5,376
Population 2003*	5,376
Population 2002*	5,376
Population 2001**	5,375
Population 2000*	5,337
Population 1996**	5,337
Population 1991**	5,138
Population % change 1991-1996	3.73%
Population % change 1996-2001	0.73%

\* Source: Official Population List, Alberta Municipal Affairs  
\*\* Source: Statistics Canada 1991, 1996, & 2001 Census

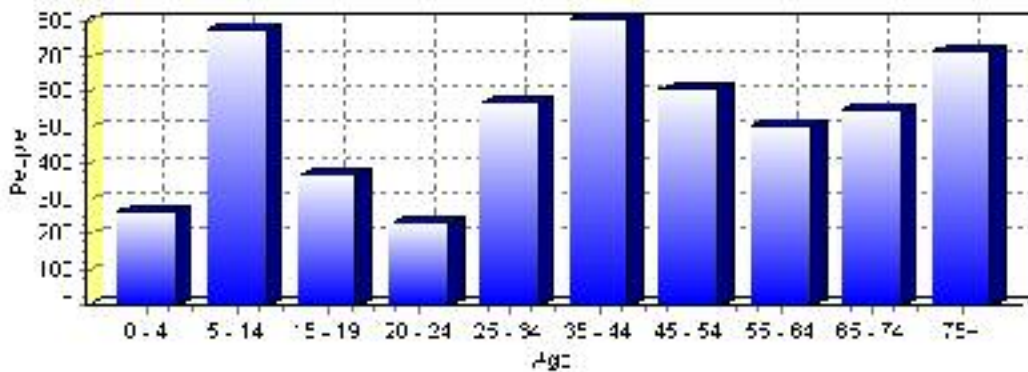
## Total Population 1991-2001



Population by Age and Gender	1996 Male	1996 Female	1996 Total	2001 Male	2001 Female	2001 Total
Age 0 - 4	170	195	365	120	145	265
Age 5 - 14	390	350	740	375	400	775
Age 15 - 19	175	145	320	195	170	365
Age 20 - 24	135	115	250	110	120	230
Age 25 - 34	310	370	680	275	295	570
Age 35 - 44	390	375	765	375	430	805
Age 45 - 54	270	295	565	300	310	610
Age 55 - 64	220	235	455	250	255	505
Age 65 - 74	235	310	545	235	315	550
Age 75 and older	250	410	660	250	465	715
Total All Persons	2,540	2,795	5,335	2,480	2,895	5,375

Source: Statistics Canada 1996 & 2001 Census (numbers may not add up due to rounding)

### Vegreville Population by Age Group (2001)

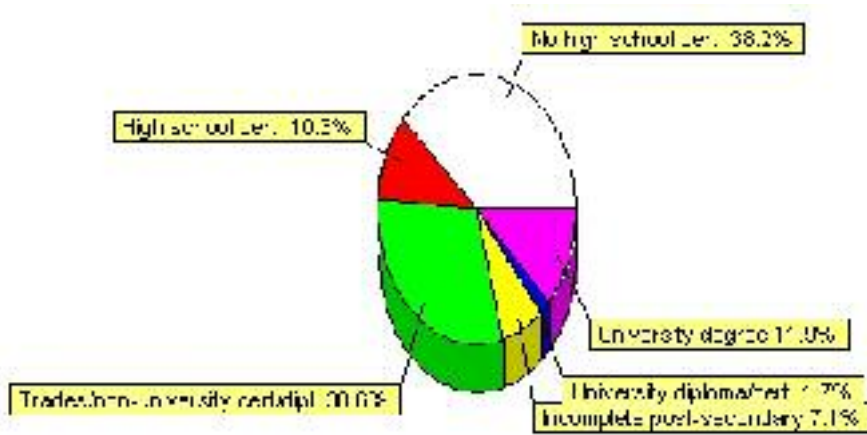


# Education Statistics

Highest level of schooling for Population 20yrs and older	2001	%
People without high school certificates	1,430	38.24%
People with high school certificates	385	10.29%
People with trades or non-university certificate or diploma	1,145	30.61%
People with post-secondary education (not completed)	265	7.09%
People with university diploma/certificate	65	1.74%
People with university degree	445	11.90%
Total Population 20 years and older	3,740	100.00%

Source: Statistics Canada 2001 Census (numbers may not add up due to rounding)

## Vegreville Highest Level of Schooling 2001



Population with Post Secondary Qualifications	1996	%	2001	%
Agriculture and biological sciences	130	9.12%	160	9.64%
Commerce, management and business administration	300	21.05%	280	16.87%
Educational, recreational and counseling services	150	10.53%	240	14.46%
Engineering and applied science tech. and trades	435	30.53%	420	25.30%
Engineering and applied sciences	10	0.70%	30	1.81%
Fine and applied arts	45	3.16%	70	4.22%
Health professionals, science and technologies	170	11.93%	255	15.36%
Humanities and related fields	45	3.16%	75	4.52%
Mathematics and physical sciences	45	3.16%	25	1.51%
Social sciences and related fields	65	4.56%	105	6.33%
Other and/or no specialization	20	1.40%	0	0.00%
Total people with post secondary qualifications	1,425	100.00%	1,660	100.00%
Females with post-secondary qualifications	660	46.32%	870	52.41%
Males with post-secondary qualifications	765	53.68%	790	47.59%

Source: Statistics Canada 1996 & 2001 Census (numbers may not add up due to rounding)

## Labour Force

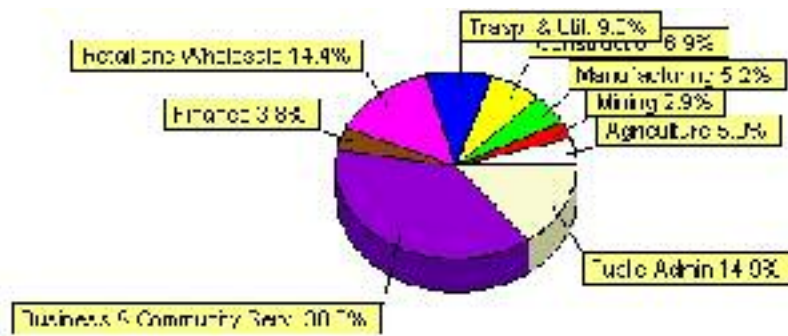
Labour force by activity	1996	2001
In the labour force, both sexes	2,445	2,410
Not in the labour force, both sexes	1,630	1,700
Total population 15 and over	4,080	4,110
Employed, both sexes	2,305	2,290
Unemployed, both sexes	140	120
Participation rate, both sexes	59.00%	59.00%
Unemployment rate, both sexes	6.00%	5.00%

Source: Statistics Canada 1996 & 2001 Census (numbers may not add up due to rounding)

Labour Force by Industry Division	1996	% of total	2001	% of total
Agriculture	135	5.53%	120	5.02%
Mining	85	3.48%	70	2.93%
Manufacturing	65	2.66%	125	5.23%
Construction	160	6.56%	165	6.90%
Transportation. & Utilities	315	12.91%	215	9.00%
Retail and Wholesale	485	19.88%	345	14.44%
Finance	135	5.53%	90	3.77%
Business & Community Services	900	36.89%	915	38.28%
Public Administration	280	11.48%	355	14.85%
Total All Industries	2,440	100.00%	2,390	100.00%

Source: Statistics Canada 1996 & 2001 Census (numbers may not add up due to rounding)

### Vegreville Labour Force By Industry - 2001



Labour Force by Major Occupational Groups	1996	%	2001	%
Management occupations	265	10.86%	205	8.58%
Business, Finances and administrative occupations	540	22.13%	425	17.78%
Natural and applied sciences and related occupations	135	5.53%	155	6.49%
Health occupations	175	7.17%	165	6.90%
Occupations in social science; education; government and religion	115	4.71%	165	6.90%
Occupations in art; culture; recreation and sport	20	0.82%	25	1.05%



Sales and service occupations	585	23.98%	565	23.64%
Trades; transport; equipment operators and related occupations	330	13.52%	460	19.25%
Occupations unique to primary industry	195	7.99%	180	7.53%
Occupations unique to processing; manufacturing and utilities	75	3.07%	45	1.88%
Occupations not elsewhere classified	10	0.41%	20	0.84%
Total - All Occupations (major groups)	2,440	100.00%	2,390	100.00%
Females - All Occupations	1,150	47.13%	1,150	48.12%
Males - All Occupations	1,290	52.87%	1,240	51.88%

Source: Statistics Canada 1996 & 2001 Census (numbers may not add up due to rounding)

---

## Income

<b>Family Income (Number of Families)</b>	<b>1996</b>	<b>%</b>	<b>2001</b>	<b>%</b>
less than \$19,999	130	10.32%	110	10.05%
\$20,000 - \$39,999	395	31.35%	430	39.27%
\$40,000 - \$59,999	295	23.41%	340	31.05%
\$60,000 and over	440	34.92%	355	32.42%
Total number of families	1,260	100.00%	1,235	112.79%
Average family income	\$52,544		\$57,145	
Median family income	\$43,474		\$49,030	

Source: Statistics Canada 1996 & 2001 Census (numbers may not add up due to rounding)

<b>Household Income (Number of Households)</b>	<b>1996</b>	<b>%</b>	<b>2001</b>	<b>%</b>
less than \$19,999	745	33.11%	590	26.11%
\$20,000 - \$39,999	650	28.89%	645	28.54%
\$40,000 - \$59,999	365	16.22%	415	18.36%
\$60,000 and over	165	7.33%	615	27.21%
Total number of households	2,250	100.00%	2,260	100.00%
Average household income	\$39,288		\$45,773	
Median household income	\$28,528		\$37,444	

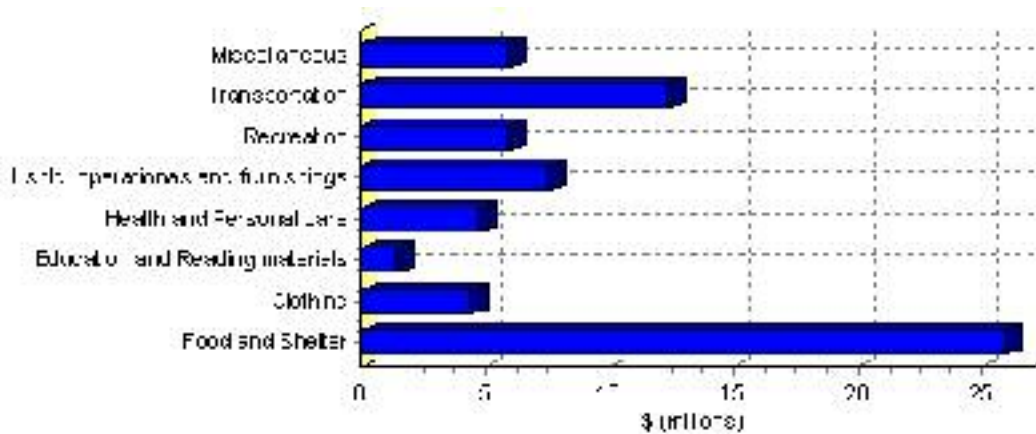
Source: Statistics Canada 1996 & 2001 Census (numbers may not add up due to rounding)

# Family Expenditure

Expenditure Category	1992	% of total	1996	% of total
Food and Shelter	\$22,725,165	37.64%	\$25,959,651	37.91%
Clothing	\$4,094,120	6.78%	\$4,403,816	6.43%
Education and Reading materials	\$1,265,710	2.10%	\$1,455,015	2.13%
Health and Personal care	\$3,780,750	6.26%	\$4,765,025	6.96%
Hshld. operations and furnishings	\$6,649,775	11.02%	\$7,583,624	11.08%
Recreation	\$4,874,045	8.07%	\$5,942,358	8.68%
Transportation	\$12,255,890	20.30%	\$12,382,606	18.09%
Miscellaneous	\$4,695,310	7.78%	\$5,976,019	8.73%
Total Current Consumption	\$60,369,560	100.00%	\$68,468,114	100.00%
Total # of Households	2,150		2,250	
Average Consumption per Household	\$28,079		\$30,430	

Source: Statistics Canada Family Expenditure Survey 1992 & 1996 (numbers may not add up due to rounding).

## Vegreville Family Expenditures (1996)

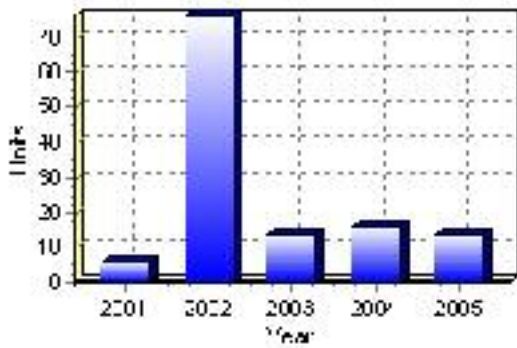


# Building Permits

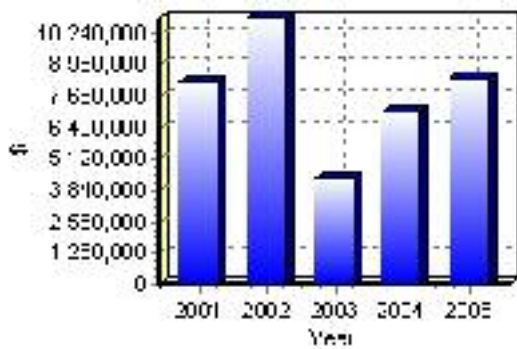
Total Building Permit Values	2001	2002	2003	2004	2005
Building Permits Value, Commercial	\$3,380,000	\$1,236,000	\$1,364,000	\$1,680,000	\$1,095,000
Building Permits Value, Industrial	\$349,000	\$1,023,000	\$0	\$0	\$400,000
Building Permits Value, Institutional	\$2,710,000	\$2,410,000	\$380,000	\$2,551,000	\$4,606,000
Building Permits Value, Residential	\$1,829,000	\$6,213,000	\$2,583,000	\$2,810,000	\$2,364,000
Building Permits Value, Total	\$8,268,000	\$10,882,000	\$4,327,000	\$7,041,000	\$8,465,000
Total Housing Starts	6	76	14	16	14

Source: Statistics Canada 2000-2004 Building Permits (numbers may not add up due to rounding)

## Total Housing Starts



## Value of Building Permits



## Dwellings

<b>Occupied Private Dwellings by Type</b>	<b>1996</b>	<b>% of total</b>	<b>2001</b>	<b>% of total</b>
Apartments	315	14.00%	295	13.05%
Detached Duplexes	10	0.44%	5	0.22%
Movable Dwellings	35	1.56%	40	1.77%
Other single attached house	10	0.44%	5	0.22%
Row and semi-detached house	90	4.00%	125	5.53%
Single-detached house	1,790	79.56%	1,795	79.42%
Total number of occupied private dwellings	2,250	100.00%	2,260	100.00%
Private dwellings, owned	1,670	74.22%	1,590	70.35%
Private Dwellings, rented	580	25.78%	670	29.65%

Source: Statistics Canada 1996 & 2001 Census (numbers may not add up due to rounding)

<b>Private Dwellings by Period of Construction</b>	<b># of Dwellings</b>	<b>% of total</b>
Period of construction, before 1946	150	6.64%
Period of construction, 1946 - 1960	360	15.93%
Period of construction, 1961 - 1970	405	17.92%
Period of construction, 1971 - 1980	815	36.06%
Period of construction, 1981 - 1990	350	15.49%
Period of construction, 1991 - 2001	180	7.96%
Total number of private dwellings constructed	2,260	100.00%

Source: Statistics Canada 2001 Census (numbers may not add up due to rounding)

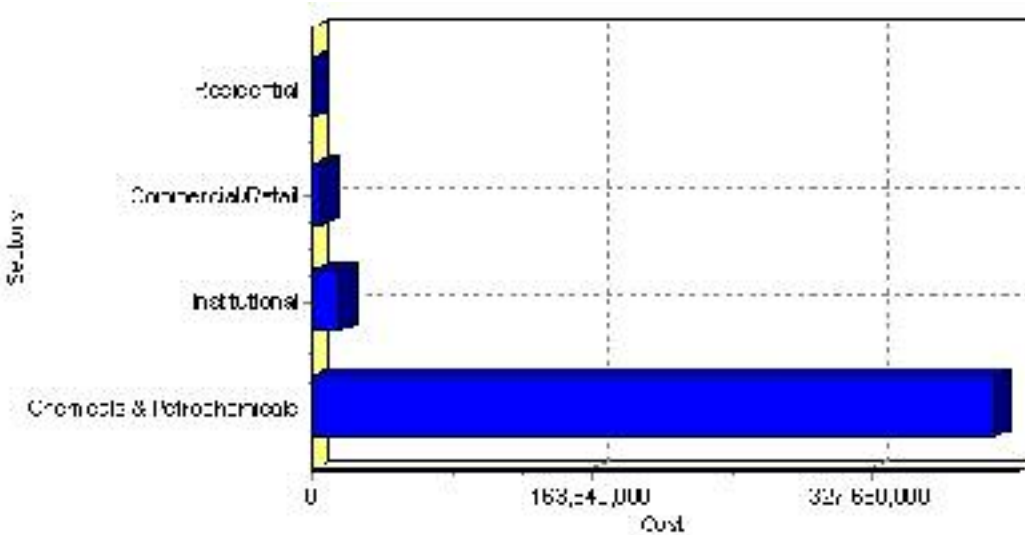
# Projects

## Summary of Projects in Vegreville as of September 2006

Project Sector	Number of Projects	Project Cost
Chemicals & Petrochemicals	1	\$400,000,000
Institutional	2	\$16,900,000
Commercial/Retail	8	\$6,013,160
Residential	1	\$100,000
Total	12	\$423,013,160

This inventory lists projects in Alberta that have recently been completed, are under construction, or are proposed to start construction. Not all projects are listed due to reasons of confidentiality and/or due to information not being available at the time of printing. Project data is obtained from public information sources, where possible, this data has been verified with the project proponent/developer, users of the Inventory may wish to confirm project data with the proponent/developer. The inventory does not breakdown project expenditures by any given year. The cost of a project is the value of expenditures expected over all phases of project construction, which may span over two or more years. Cost of projects listed in the Inventory are estimated values only. Source: Alberta Economic Development, 2004.

## Value of Projects by Sector (as of September 2006)



Project Status	Number of Projects	Project Cost
Completed	1	\$86,960
Proposed	5	\$400,299,000
Under Construction	6	\$22,627,200
Total	12	\$423,013,160

This inventory lists projects in Alberta that have recently been completed, are under construction, or are proposed to start construction. Not all projects are listed due to reasons of confidentiality and/or due to information not being available at the time of printing. Project data is obtained from public information sources, where possible, this data has been verified with the project proponent/developer, users of the Inventory may wish to confirm project data with the proponent/developer. The inventory does not breakdown project expenditures by any given year. The cost of a project is the value of expenditures expected over all phases of project construction, which may span over two or more years. Cost of projects listed in the Inventory are estimated values only. Source: Alberta Economic Development, 2004.

## Largest Projects in Vegreville as of September 2006

Company Name	Project Description	Project Location	Project Cost	Construction Schedule	Status
Iogen Corporation	Cellulose Ethanol Plant (Conversion of Straw into Biofuel)	Vegreville	\$400,000,000	-	Proposed
East Central Health Region / Vegreville Senior Housing	Long Term Care Centre and 'Century Park' Supportive Housing Complex	Vegreville	\$16,800,000	2005-2007	Under Construction
Wal-Mart Canada Inc.	New Store	Vegreville	\$5,000,000	2006-2007	Under Construction
Duncan & Craig Barristers & Solicitors	Office Renovations	Vegreville	\$277,200	2006-2006	Under Construction
Bank of Montreal	Renovations	Vegreville	\$263,000	2006-2006	Under Construction
Vernon Investments Inc.	New Highway Tractor Storage Shop	Vegreville	\$187,000	2006-2006	Under Construction
St. Michael's Manor	INSTALL SIGN & LANDSCAPING	Vegreville	\$100,000	-	Proposed
N53 Architecture Inc.	4 Portable Classrooms & Connecting Link Addition	Vegreville	\$100,000	2006-2006	Under Construction
Vinet Properties Inc.	Office Renovations	Vegreville	\$86,960	2006-2006	Completed
Ezee-On Manufacturing	STORAGE TENT (54 X 200' )	Vegreville	\$83,000	-	Proposed

Disclaimer: Information in this profile has been provided from a variety of external sources. Although every effort has been made to ensure the accuracy, currency and reliability of the content and data, AlbertaFirst.com Ltd. accepts no responsibility in this regard.

© AlbertaFirst.com Ltd., 2006.