

Coronation

www.town.coronation.ab.ca

Welcome

Whether you are new to Coronation, or you have "come home", we welcome you. We are pleased to have you in our town and hope you enjoy your stay. We invite you to make use of all our recreation facilities, or put your feet up and enjoy the quietness of the country. You will find the people friendly and helpful.

A small town is an ideal place to raise a family. Family ties are renewed and strengthened due to the commitment made by the community people through involvement in the various groups and organizations found here. Others take pleasure from viewing a rodeo, watching a ball game, or perhaps strolling through the fair, enjoying the fruit of one's labours.

Whatever the reason for your coming to Coronation, we are pleased to have you, and hope you enjoy your time here.

Mayor of Coronation



Area Overview

Coronation was named in honour of the coronation of King George V. The Town was registered as a Village on December 16, 1911, and by April 12, 1912, was declared a Town. Some of the original buildings from Coronation's early years remain, but fires over the years have taken their toll on some of the historical sites.

The development of Coronation was based on agriculture and the rich natural resources of the area. The discovery of oil and natural gas in the 1950's helped to boost the economy of the region, and gave the community a second industry for the populous to rely on.

Coronation has had its share of Champions. The Coronation Cadet Corps brought home many trophies for excellence, especially marksmanship. There has been more than one Brome Champion, as well as various cattle breeders showing Provincial and Canadian

Champion stock.

Population: 1166

Climate

If you listen to the reports that are produced by the Environment Canada Weather Reporting System at Coronation you can hear about our weather first hand. Please telephone 403-578-2664

Community Services

Municipal

Town of Coronation

Box 219 Coronation, Alberta

T0C 1C0

Tel: 403-578-3679

Fax: 403-578-2422

Public Works

Municipal Library

Provincial

Provincial Court

Fish & Wildlife

Rural Development

Federal

Canada Post

Environment Canada

Royal Canadian Mounted Police ☐

Community Lifestyle

Recreation

Golf Course, 9 Holes Grass Greens, Clubhouse

Ice Arena

Curling Rink

Ball Diamonds

Campground

Damsite Fishing Pond

Playgrounds

Bowling Centre

Gymkana Horse Riding Arena

Cross Country Ski Areas

Tennis Courts

Outdoor Swimming Pool

School Gymnasium and Weight Room
Hall Facilities: Elks Hall,, Lions Rec Centre, Senior Drop in Centre
Library (Parkland Regional Library System)

Community Organizations

Coronation & District Chamber of Commerce
Coronation & District Agricultural Society
4H Horse Club
Elks/Royal Purple
Lions/Lionesses

Churches:

United, Evangelical Free

Special Annual Events/Attractions

Coronation Professional Rodeo - "Best Rodeo by a Dam Site" June
Coronation Agricultural Fair - August
Coronation Music Festival - March

Hospitality

Hotels & Motels

Frontier Hotel
Coronation Motel
The Bunkhouse

Restaurants & Food Services:

Frontier Family Restaurant
Rite Spot Steak & Pizza
Shell Cafe
Tasty Mill Restaurant
Wild Rose Restaurant
Tea Tyme & Porcelian Treasures
Korner Kash & Karry Fast Foods
Rods Foods (Grocery)
Food Town (Grocery)

Gas Services:

Brigleys Shell
UFA - Cardlock Services Available
Coronation Bulk Service - PetroCanada - Cardlock Services Available

Economic Base

The Town of Coronation serves as a service centre for the surrounding area. The main economic base of the region is agriculture, e.g. cattle, feedlots, hogs, grain, along with oil & gas. As a result, there are a large number of businesses in Coronation that service the agriculture and oil sectors.

Economic Facts

Major Businesses Products/Services

M & N Construction Ltd. - pipeline and facilities construction
Interpipeline Fund - Oil and Gas pipeline owner
Agrotech Farm Equipment Lt. - John Deere equipment
Coronation Farm Equipment Ltd. - Case/IH equipment
NWP Trucking Ltd - oilfield pipe supply & delivery
Foodtown - Groceries
Rod's AG Foods - Groceries
Paintearth Resource Recovery Centre Waste Handling Services
Coronation Value Drug Mart
Midfield Supply Ltd - oilfield supply co.
Acklands Grainger Ltd - industrial/auto supply
Mckenzie Motors(Coronation)Ltd. - G.M. Dealership
Coronation Review - weekly newspaper
Pyramid Corp. - oilfield electrical/meter service
Ribstone Weld & Machine Ltd - metal fabricating / welding
S.K. Welding Ltd - pipeline and facilities construction
Syntech Enerfelex - Electrical/Instrumentation
Truck & Tractor - heavy equipment/truck repair
Home Hardware - construction / farm supply
East Country Home Furniture - Furn. / Appl. sales & service
FIELDS STORES - clothing / household goods

Financial Institutions

ATB Financial
TD Canada Trust
Credit Union

Education

Coronation School - Grades K - 12

Emergency Services

East Central Regional Ambulance Services Coronation Volunteer Fire Department RCMP Detachment Office E-911 Service

Health Care

Coronation Health Centre - Medical Clinic / Hospital
Coronation & District Support Services
Massage Therapy Dental Services
Denture Clinic
Chiropractor Optometrist / Optical Clinic
East Central Ambulance Service (911)
Community Health Service

Key Contacts for Business Development

Municipal

[Town of Coronation](#)
Box 219

5006 Royal Street
Coronation, Alberta
T0C 1C0
Tel: 403-578-3679
Fax: 403-578-3020

Gordon John Mclarty
Mayor

John Maine
Town Manager
Ph.(403)578-3679 Fax. (403)578-3020
E-Mail johnm@town.coronation.ab.ca

Coronation and District Chamber of Commerce
Tel: 403-578-4220

Economic Development Officer - Jim Klasson
Tel: 888-882-3156(TOLL FREE)

Provincial (Updated May 2006)

Alberta Economic Development
2nd Floor, Provincial Building
4920 - 51 Street
Red Deer, Alberta
T4N 6K8
Tel: 403-340-5300
Fax: 403-340-5231
Andre Tremblay, *Regional Manager*
andre.tremblay@gov.ab.ca
Dawna Allard, *Regional Development Officer*
dawna.allard@gov.ab.ca
Lisa Houle, *Regional Project Officer*
lisa.houle@gov.ab.ca

Doug Griffiths
Member of the Legislative Assembly [MLA]
Wainwright Constituency

Constituency Office
#201, 1006 - 4 Avenue
Wainwright
T9W 2R3
Phone: (780) 842-6177
Fax: (780) 842-3171
battleriver.wainwright@assembly.ab.ca

Legislature Office
#130 Legislature Building
10800-97 Avenue
Edmonton
T5K 2B6
Phone: (780) 422-5369

Fax: (780) 422-5385

Federal (Updated May 2006)

Kevin Sorenson
Member of Parliament [MP]
Crowfoot Constituency

Parliamentary Address

House of Commons
Ottawa, Ontario
K1A 0A6
Telephone: (613) 947-4608
Fax: (613) 947-4611
E-Mail: Sorenson.K@parl.gc.ca

Constituency Address

4945 - 50th Street
Camrose, Alberta
T4V 1P9
Telephone: (780) 608-4600 1-800-665-4358
Fax: (780) 608-4603
TTY:
E-Mail:

Location

The Town of Coronation is located in the County of Paintearth #18, in east-central Alberta. It is 196 km east of Red Deer, and 269 km southeast of Edmonton. Elevation: 798 Meters.

Post Secondary Education

Adult education is available in the form of teleconferencing through the Big Country Education Consortium. Short courses are available through the Further Education Council.

Other post-secondary education is available at Red Deer Community College, located in Red Deer, or Calgary or Edmonton based institutions.

Taxation

	<u>Residential/Farmland</u>	<u>Non-Residential</u>
2005		
Municipal Tax Rate	16.4170	21.3560
Education - Alberta School Foundation Fund Tax Rate	5.1030	7.6090
Seniors Lodge Accommodation Tax Rate	..5150	.5150

Mill Rates [2002]

Residential-Public 20.467
Residential-Separate N/A
Non-Residential-Public 27.640
Non-Residential-Separate N/A

Transportation

Air Service

The Coronation Airport is located 1 mile south of Coronation, and has a 914 metre, a asphalt base runway. Alternate landing sites are located at Castor, Consort, Hardisty and Hanna in case of inclement weather. The nearest commercial and air freight service is at Edmonton.

Highways

Connecting highways are Primary Highway 12 [east-west] and Secondary Highway 872 [north-south].

Trucking Firms

Hi-Way 9 Express
Stettler Transport
East Country Delivery

There are various trucking companies which specialize in specific types of hauling, such as cattle liners, gravel trucks, fertilizer hauling, etc.

Bus Services

Ferguson Bus Lines servicing the Town daily to Calgary, Red Deer and Edmonton

Couriers and Taxis

Loomis Courier, Purolator Courier

Utilities

High Speed Internet Service-Wildrose Internet

Electrical Power

ATCO
Electric Ltd
Coronation, Alberta
Tel: 403-578-2110

Natural Gas

ATCO Gas Ltd
4912 Windsor Avenue
Coronation, Alberta
T0C 1C0
Tel: 403-578-3439

Telephone

Telus
Tel: 403-310-2255

Water Supply

The water supply is administered by the Town of Coronation. There is a flat charge to users, i.e., no metres.

Waste Management

Garbage pickup is once per week for residences, and 2 or 3 times per week for downtown retail businesses [upon request].

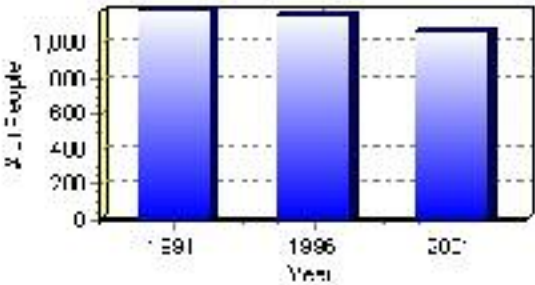
Population

Total Population

Population 2004*	1,074
Population 2003*	1,074
Population 2002*	1,074
Population 2001**	900
Population 2000*	1,166
Population 1996**	1,166
Population 1991**	1,184
Population % change 1991-1996	-1.54%
Population % change 1996-2001	-8.57%

* Source: Official Population List, Alberta Municipal Affairs
** Source: Statistics Canada 1991, 1996, & 2001 Census

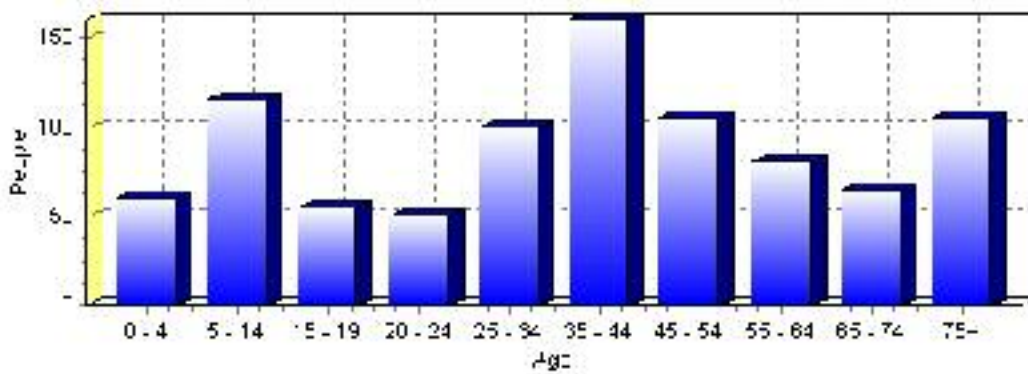
Total Population 1991-2001



Population by Age and Gender	1996 Male	1996 Female	1996 Total	2001 Male	2001 Female	2001 Total
Age 0 - 4	40	45	85	25	35	60
Age 5 - 14	95	85	180	55	60	115
Age 15 - 19	45	60	105	30	25	55
Age 20 - 24	55	30	85	25	25	50
Age 25 - 34	85	80	165	60	40	100
Age 35 - 44	90	90	180	75	85	160
Age 45 - 54	60	45	105	65	40	105
Age 55 - 64	35	35	70	35	45	80
Age 65 - 74	40	50	90	30	35	65
Age 75 and older	45	55	100	40	65	105
Total All Persons	590	580	1,170	435	465	900

Source: Statistics Canada 1996 & 2001 Census (numbers may not add up due to rounding)

Coronation Population by Age Group (2001)

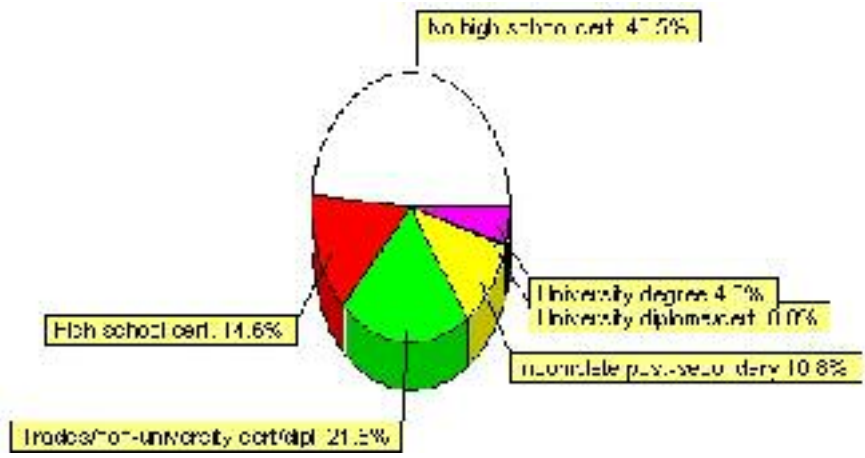


Education Statistics

Highest level of schooling for Population 20yrs and older	2001	%
People without high school certificates	315	48.46%
People with high school certificates	95	14.62%
People with trades or non-university certificate or diploma	140	21.54%
People with post-secondary education (not completed)	70	10.77%
People with university diploma/certificate	0	0.00%
People with university degree	30	4.62%
Total Population 20 years and older	650	100.00%

Source: Statistics Canada 2001 Census (numbers may not add up due to rounding)

Coronation Highest Level of Schooling 2001



Population with Post Secondary Qualifications	1996	%	2001	%
Agriculture and biological sciences	10	4.17%	15	8.57%
Commerce, management and business administration	35	14.58%	30	17.14%
Educational, recreational and counseling services	60	25.00%	15	8.57%
Engineering and applied science tech. and trades	65	27.08%	75	42.86%
Engineering and applied sciences	0	0.00%	0	0.00%
Fine and applied arts	0	0.00%	0	0.00%
Health professionals, science and technologies	30	12.50%	20	11.43%
Humanities and related fields	10	4.17%	10	5.71%
Mathematics and physical sciences	0	0.00%	0	0.00%
Social sciences and related fields	10	4.17%	0	0.00%
Other and/or no specialization	0	0.00%	0	0.00%
Total people with post secondary qualifications	240	100.00%	175	100.00%
Females with post-secondary qualifications	105	43.75%	75	42.86%
Males with post-secondary qualifications	135	56.25%	100	57.14%

Source: Statistics Canada 1996 & 2001 Census (numbers may not add up due to rounding)

Labour Force

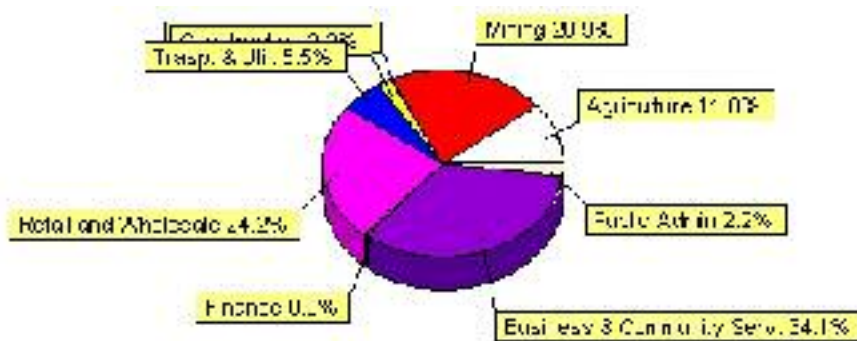
Labour force by activity	1996	2001
In the labour force, both sexes	640	455
Not in the labour force, both sexes	235	250
Total population 15 and over	875	705
Employed, both sexes	595	455
Unemployed, both sexes	45	0
Participation rate, both sexes	73.00%	65.00%
Unemployment rate, both sexes	7.00%	0.00%

Source: Statistics Canada 1996 & 2001 Census (numbers may not add up due to rounding)

Labour Force by Industry Division	1996	% of total	2001	% of total
Agriculture	30	4.72%	50	10.99%
Mining	75	11.81%	95	20.88%
Manufacturing	15	2.36%	0	0.00%
Construction	55	8.66%	10	2.20%
Transportation. & Utilities	30	4.72%	25	5.49%
Retail and Wholesale	140	22.05%	110	24.18%
Finance	30	4.72%	0	0.00%
Business & Community Services	195	30.71%	155	34.07%
Public Administration	20	3.15%	10	2.20%
Total All Industries	635	100.00%	455	100.00%

Source: Statistics Canada 1996 & 2001 Census (numbers may not add up due to rounding)

Coronation Labour Force By Industry - 2001



Labour Force by Major Occupational Groups	1996	%	2001	%
Management occupations	60	9.45%	75	16.48%
Business, Finances and administrative occupations	80	12.60%	70	15.38%
Natural and applied sciences and related occupations	10	1.57%	15	3.30%
Health occupations	20	3.15%	15	3.30%
Occupations in social science; education; government and religion	35	5.51%	15	3.30%
Occupations in art; culture; recreation and sport	15	2.36%	10	2.20%

Sales and service occupations	170	26.77%	85	18.68%
Trades; transport; equipment operators and related occupations	105	16.54%	65	14.29%
Occupations unique to primary industry	85	13.39%	95	20.88%
Occupations unique to processing; manufacturing and utilities	50	7.87%	10	2.20%
Occupations not elsewhere classified	0	0.00%	0	0.00%
Total - All Occupations (major groups)	635	100.00%	455	100.00%
Females - All Occupations	270	42.52%	180	39.56%
Males - All Occupations	365	57.48%	275	60.44%

Source: Statistics Canada 1996 & 2001 Census (numbers may not add up due to rounding)

Income

Family Income (Number of Families)	1996	%	2001	%
less than \$19,999	20	8.16%	20	10.00%
\$20,000 - \$39,999	40	16.33%	60	30.00%
\$40,000 - \$59,999	80	32.65%	65	32.50%
\$60,000 and over	105	42.86%	60	30.00%
Total number of families	245	100.00%	205	102.50%
Average family income	\$59,192		\$60,896	
Median family income	\$56,128		\$50,637	

Source: Statistics Canada 1996 & 2001 Census (numbers may not add up due to rounding)

Household Income (Number of Households)	1996	%	2001	%
less than \$19,999	70	15.91%	80	21.33%
\$20,000 - \$39,999	125	28.41%	110	29.33%
\$40,000 - \$59,999	110	25.00%	75	20.00%
\$60,000 and over	45	10.23%	110	29.33%
Total number of households	440	100.00%	375	100.00%
Average household income	\$49,775		\$47,944	
Median household income	\$44,985		\$38,407	

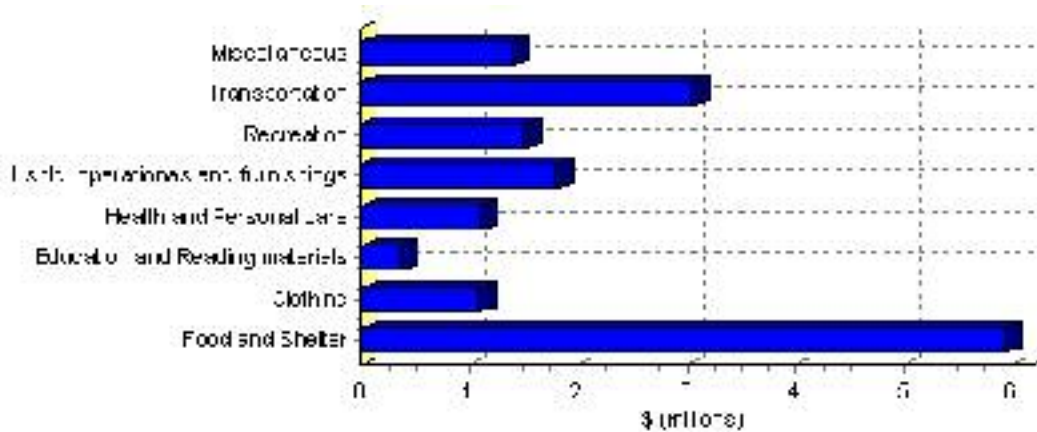
Source: Statistics Canada 1996 & 2001 Census (numbers may not add up due to rounding)

Family Expenditure

Expenditure Category	1992	% of total	1996	% of total
Food and Shelter	\$4,619,490	36.97%	\$5,943,232	36.47%
Clothing	\$843,750	6.75%	\$1,096,552	6.73%
Education and Reading materials	\$247,170	1.98%	\$363,009	2.23%
Health and Personal care	\$783,165	6.27%	\$1,106,247	6.79%
Hshld. operations and furnishings	\$1,362,495	10.91%	\$1,799,639	11.04%
Recreation	\$977,415	7.82%	\$1,512,717	9.28%
Transportation	\$2,606,340	20.86%	\$3,062,811	18.80%
Miscellaneous	\$1,051,020	8.41%	\$1,411,060	8.66%
Total Current Consumption	\$12,493,560	100.00%	\$16,295,267	100.00%
Total # of Households	420		441	
Average Consumption per Household	\$29,747		\$36,951	

Source: Statistics Canada Family Expenditure Survey 1992 & 1996 (numbers may not add up due to rounding).

Coronation Family Expenditures (1996)

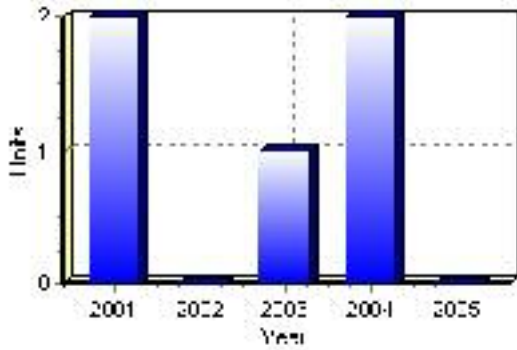


Building Permits

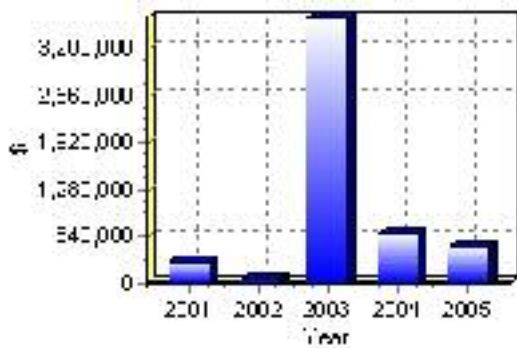
Total Building Permit Values	2001	2002	2003	2004	2005
Building Permits Value, Commercial	\$34,000	\$44,000	\$63,000	\$40,000	\$465,000
Building Permits Value, Industrial	\$0	\$0	\$30,000	\$0	\$0
Building Permits Value, Institutional	\$0	\$0	\$3,359,000	\$0	\$0
Building Permits Value, Residential	\$269,000	\$2,000	\$154,000	\$631,000	\$14,000
Building Permits Value, Total	\$303,000	\$46,000	\$3,606,000	\$671,000	\$479,000
Total Housing Starts	2	0	1	2	0

Source: Statistics Canada 2000-2004 Building Permits (numbers may not add up due to rounding)

Total Housing Starts



Value of Building Permits



Dwellings

Occupied Private Dwellings by Type	1996	% of total	2001	% of total
Apartments	10	2.27%	0	0.00%
Detached Duplexes	0	0.00%	20	5.33%
Movable Dwellings	115	26.14%	75	20.00%
Other single attached house	0	0.00%	0	0.00%
Row and semi-detached house	20	4.55%	15	4.00%
Single-detached house	295	67.05%	265	70.67%
Total number of occupied private dwellings	440	100.00%	375	100.00%
Private dwellings, owned	295	67.05%	310	82.67%
Private Dwellings, rented	145	32.95%	65	17.33%

Source: Statistics Canada 1996 & 2001 Census (numbers may not add up due to rounding)

Private Dwellings by Period of Construction	# of Dwellings	% of total
Period of construction, before 1946	55	14.29%
Period of construction, 1946 - 1960	40	10.39%
Period of construction, 1961 - 1970	70	18.18%
Period of construction, 1971 - 1980	125	32.47%
Period of construction, 1981 - 1990	60	15.58%
Period of construction, 1991 - 2001	35	9.09%
Total number of private dwellings constructed	385	100.00%

Source: Statistics Canada 2001 Census (numbers may not add up due to rounding)

Disclaimer: Information in this profile has been provided from a variety of external sources. Although every effort has been made to ensure the accuracy, currency and reliability of the content and data, AlbertaFirst.com Ltd. accepts no responsibility in this regard.

© AlbertaFirst.com Ltd., 2006.