

# Cypress County

[www.cypress.ab.ca](http://www.cypress.ab.ca)

## Welcome

Welcome to our wonderful community. We hope the information contained within this profile is useful for all people seeking business opportunities, visitors or residents of Cypress County. If additional information is required, please contact our representative from the "Key Contacts" section. For more information on Cypress County go to our website at [www.cypress.ab.ca](http://www.cypress.ab.ca)... and have a nice day!

## Area Overview

Cypress County is a large, rural municipality with a diversified economy and a large tax base. The population in 2001 was 6,235 people.

Cypress County is a dynamic, friendly place to do business with strong growth potential. The area is growing rapidly due to an influx of migrants from Saskatchewan and other areas. There are business opportunities in the oil and gas and agricultural sectors of the community, and Cypress County has a skilled, highly adaptable labour force. Couple these opportunities with low land values, low utility rates, and some of the lowest property taxes in the province and there is an unbeatable combination of features for economic growth and development.

### The Alberta Advantage

Alberta's economy is thriving - it has the highest rate of economic growth in Canada at 3.8% in the last ten years! Alberta has also consistently been the province with the highest investment per capita (Source: [Alberta Economic Development](#)). Southeast Alberta in particular has a flourishing energy sector, agri-food (including value-added agriculture), research and development in the area of defence, engineering and construction, metal fabrication and machinery, non-metallic minerals, and tourism (Source: [Palliser Economic Partnership](#)).

## Climate

Normal Averages taken by The Meteorological Service of Canada. The averages are taken from 1883 to 1990. These were recorded at the Medicine Hat observing station located at 50d 1' N, 110d 43' W, elevation: 717 metres.

Average Daily Temperatures:

Maximum - High: 27.3C

Low: -5.1C

Minimum - High: 12.2C

Low: -16.4C

Average Precipitation:

High: 56.4mm

Low: 10.3mm

Yearly Average: 322.6mm

Average Snowfall:

High: 20.9mm

Low: 0.0mm

Yearly Average: 108.2mm

Average Rainfall:

High: 56.4mm

Low: 0.2mm  
Yearly Average: 230.0mm

Average Sunshine Hours  
High: 351.3 hrs  
Low: 86.1 hrs

Wind: Average speed 15 km/h and most frequently out of the southwest.

For an updated and more comprehensive list visit the Medicine Hat page at: [The Meteorological Service of Canada](#).

## Community Services

### Municipal

Cypress County  
Box 108  
Dunmore, Alberta T0J 1A0  
Tel: 403-526-2888  
Fax: 403-526-8958

The Cypress County Council consists of 9 councillors representing 9 electoral divisions. The District has a Municipal Planning Commission, Recreation Board and an Agricultural Services Board. They provide their own planning and assessment services and are members of the Southeast Alberta Travel and Convention Association.

### Provincial

Several provincial departments have offices in Medicine Hat, including Advanced Education, Alberta Agriculture, Alberta Economic Development and Tourism, Alberta Opportunity Company, Child Welfare, Crown Prosecutor, Court of the Queen's Bench, Energy Resources Conservation Board, Family and Social Services, Fish and Wildlife, Medical Examiner-Coroner, Mental Health Clinic, Medicine Hat Remand Centre, Provincial Parks, Provincial Court, Public Lands, Transportation and Utilities, and Vehicle Inspection.

### Federal

Several federal departments have offices in Medicine Hat, including: Environment Canada, Federal Business Development Bank, Canada Employment Centre, [National Defence \(CFB Suffield\)](#), Prairie Farm Rehabilitation Administration, Revenue Canada, and Transport Canada.

## Community Lifestyle

Recreation The District offers an extensive range of recreation facilities, and tourism is a growing component of the local economy. The District has a Recreation Board and is a part of the [Canadian Badlands](#) initiative. Each hamlet also has a Community Association which operates local facilities. The District also pays a share of the operating costs for the ice arena and curling rink at the Irvine Recreation Complex.

Recreation facilities in the District include playgrounds, golf clubs, community halls, arenas and curling rinks. Several recreation areas provide sites for camping, fishing, boating, water skiing and swimming. Three main parks in Cypress County include: [Cypress Hill Interprovincial Park \(Elkwater\)](#), Cavan Lake Municipal Recreation Area and Sandy Point Municipal Recreation Area. To view more click on: [Cypress County's Tourist Attractions](#).

### Community Organizations

Available throughout Cypress County.

### Religious Services

All major denominations are represented in the Cypress County.

### Special Annual Events/Attractions

There are a large number and wide range of community organizations, sports clubs, and recreational groups that operate in Cypress County.

Some major events include:

- Elkwater Rodeo
- 40 Mile Post Days in Irvine
- Boxsprings Rodeo

### Hospitality & Accommodations

There are numerous restaurants and accommodations available throughout the district.

## Economic Base

The basis of the economy is agriculture but there is also a large non-farm population engaged in other pursuits associated with the oil and gas industry, the military, manufacturing, or other pursuits in the City of Medicine Hat.

Cypress County has a diversified agricultural economy based on ranching, dryland farming, and irrigated specialty crops. Total farm area in the County is 3,858 square miles. Farm numbers have remained relatively constant at 950 operators – both small and large operations. [Cypress County Agricultural Services](#).

The following tables outline the agricultural products produced within the County:

<b>Crop</b>	<b>Acres</b>
Wheat	214,176
Oats	18,728
Barley	36,633
Mixed Grains	5,159
Rye	5,273
Alfalfa Mixtures	58,205
Canola (Rapeseed)	9,214
Dryfield Peas	7,712
Lentils	884

<b>Livestock &amp; Poultry</b>	<b>#</b>
Cattle & Calves	145,409

Pigs	20,445
Sheep & Lambs	5,672
Hens & Chickens	34,772
Turkeys	333

Source: Agricultural Census, 2001.

## Economic Facts

Approximately 55% of the land area is held in long term government leases. The proportion of the land held in this manner has declined as the government has moved to sell some of this land to current lessees. Most of this land is held in the form of unimproved pasture used for grazing. Only 28% of the total area of the District is improved. There has been a gradual tendency for unimproved pasture to be turned into improved pasture and a slight decline in the incidence of summer fallow.

The major agricultural crop continues to be wheat but the total acreage has declined by approximately 4% in response to lower prices. Farmers have moved to fill the gap with oil seeds, particularly canola, being the most notable successor crop. The development of an alfalfa dehydrating plant at Seven Persons has resulted in a significant increase in the total acreage of alfalfa grown in the irrigated areas. There has also been a steady expansion in the number of greenhouses in the District capitalizing on the District's favourable climate and low utility rates.

Livestock numbers have continued to increase but hogs, instead of cattle, have shown the greatest growth. Such diversification is good for the local economy. The total farming area is 2.5 million acres and over 63,000 of those are irrigated (Source: Census of Canada, 2001).

### Major Businesses Products/Services

- Propane and Ethane Extraction J
- MT Oil Field Hauling
- Advantage Oilfield Construction
- Blondie's Gift and Garden Centre Ltd.
- Carlson Wagonlit Travel
- LaFarge Construction Materials – Concrete Manufacturer
- Lawrence Meier Trucking Ltd. – Paving Contractor
- Cypress Packers

### Financial Institutions

Financial institutions are located throughout the County.

## Education

Cypress County is part of the [Medicine Hat Public School District No. 76](#) (Tel: 403-528-6729) and the Medicine Hat Roman Catholic Separate School District No. 21 (Tel: 403-527-2292), which serves the fringe area surrounding Medicine Hat. The remainder of the area is served by the [Prairie Rose School Division No. 8](#), headquartered in Dunmore (Tel: 403-527-5516).

### Daycare/Nursery

Daycare facilities are available throughout Cypress County.

### **Public/Separate**

The Prairie Rose School Division operates eight schools in the Cypress County: Seven Persons School (1-9), Schuler Elementary School (1-9), Ralston School (1-9), Isabel F. Cox School (Redcliff - K-3), Margaret Wooding School (Redcliff - 4-6), Parkside School (Redcliff - 7-9), Irvine School (1-8) and Eagle Butte High School (9-12).

High school students from the south part of the District attend Eagle Butte High School while students from the north part of the district attend Medicine Hat high schools.

### **Separate**

Separate school education is available in Medicine Hat and the surrounding area.

### **Corporate Education Network (CENetwork)**

The Corporate Education Network (CENetwork) is a comprehensive website that promotes a “one-stop-shop” of training services available to individuals and businesses in Southeast Alberta. Users of the CENetwork can research, compare and register for training courses, events, and facilities, all in one centralized online location.

This initiative was made possible through a partnership with Entre-Corp Business Development Centre, Medicine Hat College, Palliser Economic Partnership and Office of Learning Technologies – Human Resources and Social Development.

Visit [CENetwork](#).

## **Emergency Services**

### **Fire Protection**

Fire fighting services are provided by a combination of paid and volunteer arrangements. The District has a reciprocal exchange agreement covering the fringe areas around the City of Medicine Hat. The outlying areas are serviced by volunteer fire departments.

### **Police Services**

Police services are provided by the Royal Canadian Mounted Police.

### **Ambulance Services**

Ambulance services are administered by Cypress County.

## **Health Care**

Cypress County is part of the Palliser Regional Health District. The Medicine Hat Hospital is the regional health centre providing a full range of services to south-eastern Alberta. There are currently 93 doctors practising medicine in the area. Also part of the Regional Health District is the southeast Alberta Health Unit which provides a full range of extended health care services.

The care of seniors is handled by the Cypress View Lodge Foundation. It provides a full range of housing for seniors extending from self contained units to full nursing home care. There is also a wide range of private and semi-private seniors care facilities located within the City of Medicine Hat.

## **Key Contacts for Business Development**

### **Municipal**

Cypress County  
Box 108

Dunmore, Alberta T0J 1A0  
Tel: 403-526-2888  
Fax: 403-526-8958  
Email: [cypress@cypress.ab.ca](mailto:cypress@cypress.ab.ca)

Jack Osadczuk  
Reeve  
Email: [cypress@cypress.ab.ca](mailto:cypress@cypress.ab.ca)

Lutz Perschon  
Manager  
E-mail: [lutz@cypress.ab.ca](mailto:lutz@cypress.ab.ca)

Keith Bender  
Assistant Manager  
E-Mail: [khbender@cypress.ab.ca](mailto:khbender@cypress.ab.ca)

Joan Deering  
Treasurer  
E-Mail: [deering@cypress.ab.ca](mailto:deering@cypress.ab.ca)

Brian Whitson  
Planner  
E-Mail: [bwhitson@cypress.ab.ca](mailto:bwhitson@cypress.ab.ca)

Dennis Mann  
Emergency Services Co-ordinator/Purchasing/Computer Technician  
Email: [denman@cypress.ab.ca](mailto:denman@cypress.ab.ca)

Rick Bleau  
Public Works Supervisor  
E-Mail: [rick@cypress.ab.ca](mailto:rick@cypress.ab.ca)

**Entre-Corp Business Development Centre Ltd.**  
#202 – 556 4th Street SE  
Medicine Hat, Alberta T1A 0K8  
Tel: 403-528-2824  
Toll Free: 1-888-528-2428  
Fax: 403-527-3596  
Email: [bizinfo@entre-corp.com](mailto:bizinfo@entre-corp.com)

**Provincial (Updated December 2004)**

Elvira Smid  
Alberta Economic Development  
109 Provincial Building  
346 - 3 Street S.E.  
Medicine Hat, Alberta T1A 0G7  
Tel: 403-529-3630  
Fax: 403-529-3140  
Email: [elvira.smid@gov.ab.ca](mailto:elvira.smid@gov.ab.ca)

Gloria Filgas, Information Officer  
Email: [gloria.filgas@gov.ab.ca](mailto:gloria.filgas@gov.ab.ca)

Hon. Leonard Mitzel  
Minister of Environment  
Member of the Legislative Assembly [MLA]  
Cypress-Medicine Hat Constituency

423 Legislature Building  
10800 - 97 Avenue  
Edmonton, Alberta T5K 2B6  
Tel: 780-427-2391  
Fax: 780-422-6259  
E-mail: [cypress.medicinehat@assembly.ab.ca](mailto:cypress.medicinehat@assembly.ab.ca)

Hon Lyle Oberg  
Minister of Learning  
Member of the Legislative Assembly [MLA]  
Strathmore-Brooks Constituency  
#204, 10800- 97 Avenue  
Edmonton, Alberta T5K 2B6  
Tel: 780-427-2025  
Fax: 780-427-5582  
E-mail: [Strathmore-Brooks@assembly.ab.ca](mailto:Strathmore-Brooks@assembly.ab.ca)

### **Federal (Updated May 2006)**

Monte Solberg  
Minister of Citizenship and Immigration  
Member of Parliament [MP]  
Medicine Hat Constituency  
House of Commons  
Ottawa, Ontario K1A 0A6  
Tel: 613-992-4516  
Fax: 613-912-6181  
E-mail: [Solberg.M@parl.gc.ca](mailto:Solberg.M@parl.gc.ca)

Constituency Office:  
(Brooks)  
P.O. Box 640  
Brooks, Alberta T1R 1B6  
Tel: 403-362-7677

(Medicine Hat)  
24 419 3rd St SE  
Medicine Hat, Alberta T1A 0G9  
Tel: 403-528-4698

## **Location**

Cypress County is located in the southeast corner of Alberta.

### **Cypress County's Proximity to Other Locations**

---

<b>Driving Distance from Cypress County</b>	<b>Kilometres</b>	<b>Miles</b>
Lethbridge, Alberta	180	111
Calgary, Alberta	306	190
Edmonton, Alberta	565	351
Coutts, Alberta/Sweet Grass (USA) 24 hour Border Crossing	204	127
Port Vancouver, British Columbia	1272	790

Spokane, USA	1054	655
Seattle, USA	1534	953

---

## Post Secondary Education

Post-secondary education needs are met by [Medicine Hat College](#), an active community centre. The College offers a wide variety of university transfer, diploma, certificate, trades, academic upgrading, life skills and English as a Second Language programs. Specific courses for business and industry, general interest courses and the conservatory of Music and Dance attracts a large number of participants. Many community organizations and conference participants also make good use of the College's facilities, residences and grounds.

## Taxation

2006	Residential/Farmland	Non-Residential
Municipal Tax Rate	2.9064	2.9064
Education - Alberta School Foundation Fund Tax Rate & Education Opt Out Tax Rate	3.9893	5.0395
Seniors Lodge Accommodation Tax Rate	0.0779	0.0779

### Mill Rates (2006)

- Residential – 6.9736
- Non-Residential – 7.9459
- Linear – 8.0238
- Machinery and Equipment – 2.9843

## Transportation

### Air Services

The area is well served by transportation facilities. There are direct scheduled connections to Calgary and Lethbridge by Canadian Airlines and Air BC.

### Rail Services

The Canadian Pacific Railway, mainline and Crowsnest line parallel Highways 1 and 3 providing regular rail service east-west.

### Highways

The District is served by three primary highways. The District is traversed from east to west by Highways 1 (TransCanada Highway) and 3 while Highway 41 provides good access to the north and south parts of the region. Secondary highways feed into this primary system giving good access to most areas of the District.

### Trucking Firms

- Lawrence Meier Trucking Ltd.
- JMT Oil Field Hauling
- Teroko Industries
- Nick Linden Construction – gravel hauling



## Bus Services

There is daily [Greyhound bus](#) service from Medicine Hat to Calgary, Regina and Lethbridge.

## Couriers and Taxis

There are 11 courier services based in Medicine Hat.

# Utilities

## Electrical Power

City of Medicine Hat [fringe area only]

[TransAlta](#)

Tel: 403-267-7110

## Natural Gas

[City of Medicine Hat](#)

Tel: 403-529-8115

Forty Mile Gas Co-op

Tel: 403-526-7718

[AltaGas Utilities Inc.](#)

Tel: 1-866-222-2067

## Telephone

Telus

Residential Service: 403-310-2255

Business Service: 403-310-3100

## Water Supply

Piped water is available in all hamlets and a number also have sewer treatment facilities. The Hamlets of Dunmore and Veinerville, and a limited area just outside the City of Medicine Hat have access to city water. Consumption charges outside of the city include a \$5.00/month base charge plus \$0.75/cubic metre for both commercial and residential use.

The St. Mary River Irrigation District supplies Seven Persons, while deep wells supply water to Hilda, Schuler, Suffield and Ralston. Surface water supplies Elkwater and Walsh.

## Waste Management

Cypress County is a member of the Cypress Regional Landfill Consortium. The landfill site is located west of Redcliff. There are a number of transfer sites located throughout the District.

Residential sewer rates are \$ 8.00 per month, commercial rates are \$16.00 per month.

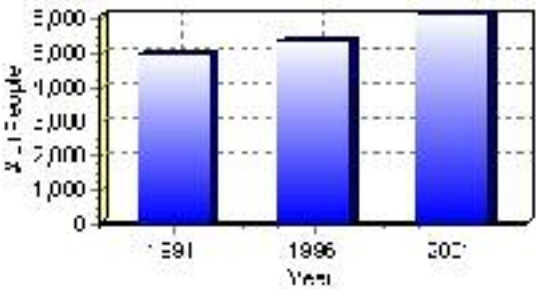
# Population

## Total Population

Population 2004*	6,114
Population 2003*	6,114
Population 2002*	6,114
Population 2001**	6,110
Population 2000*	6,235
Population 1996**	5,353
Population 1991**	4,962
Population % change 1991-1996	7.30%
Population % change 1996-2001	12.45%

\* Source: Official Population List, Alberta Municipal Affairs  
\*\* Source: Statistics Canada 1991, 1996, & 2001 Census

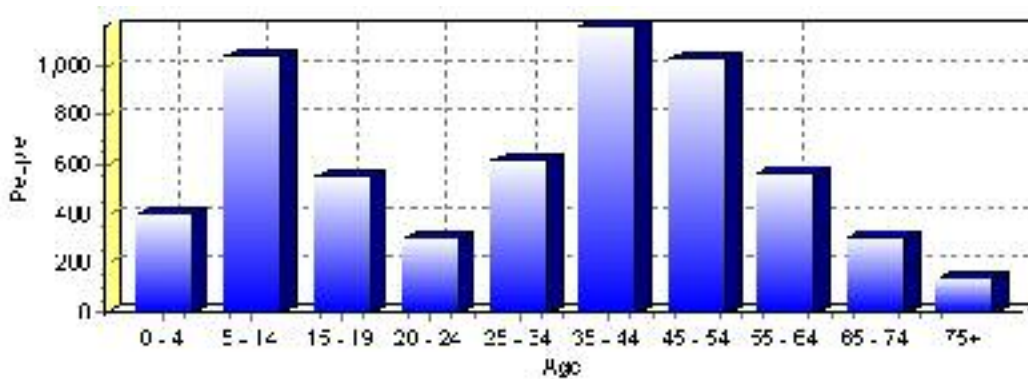
## Total Population 1991-2001



Population by Age and Gender	1996 Male	1996 Female	1996 Total	2001 Male	2001 Female	2001 Total
Age 0 - 4	210	170	380	220	175	395
Age 5 - 14	515	495	1,010	535	500	1,035
Age 15 - 19	230	195	425	290	260	550
Age 20 - 24	165	115	280	165	135	300
Age 25 - 34	365	385	750	320	295	615
Age 35 - 44	570	525	1,095	570	590	1,160
Age 45 - 54	365	310	675	540	490	1,030
Age 55 - 64	245	175	420	315	255	570
Age 65 - 74	115	105	220	185	120	305
Age 75 and older	65	40	105	75	65	140
Total All Persons	2,840	2,515	5,355	3,220	2,895	6,115

Source: Statistics Canada 1996 & 2001 Census (numbers may not add up due to rounding)

### Cypress County Population by Age Group (2001)

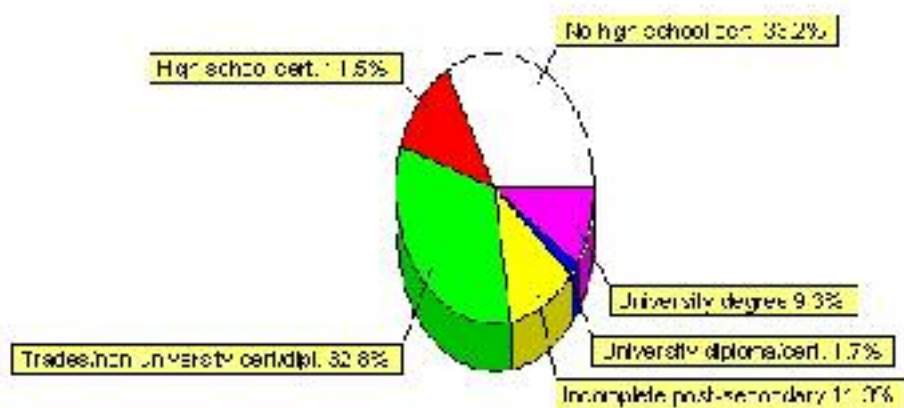


## Education Statistics

Highest level of schooling for Population 20yrs and older	2001	%
People without high school certificates	1,370	33.21%
People with high school certificates	475	11.52%
People with trades or non-university certificate or diploma	1,355	32.85%
People with post-secondary education (not completed)	465	11.27%
People with university diploma/certificate	70	1.70%
People with university degree	385	9.33%
Total Population 20 years and older	4,125	100.00%

Source: Statistics Canada 2001 Census (numbers may not add up due to rounding)

### Cypress County Highest Level of Schooling 2001



Population with Post Secondary Qualifications	1996	%	2001	%
Agriculture and biological sciences	155	12.30%	185	10.19%
Commerce, management and business administration	195	15.48%	315	17.36%
Educational, recreational and counseling services	150	11.90%	200	11.02%
Engineering and applied science tech. and trades	420	33.33%	565	31.13%
Engineering and applied sciences	25	1.98%	15	0.83%
Fine and applied arts	70	5.56%	70	3.86%
Health professionals, science and technologies	135	10.71%	270	14.88%
Humanities and related fields	15	1.19%	105	5.79%
Mathematics and physical sciences	20	1.59%	25	1.38%
Social sciences and related fields	85	6.75%	75	4.13%
Other and/or no specialization	0	0.00%	0	0.00%
Total people with post secondary qualifications	1,260	100.00%	1,815	100.00%
Females with post-secondary qualifications	565	44.84%	885	48.76%
Males with post-secondary qualifications	695	55.16%	930	51.24%

Source: Statistics Canada 1996 & 2001 Census (numbers may not add up due to rounding)

## Labour Force

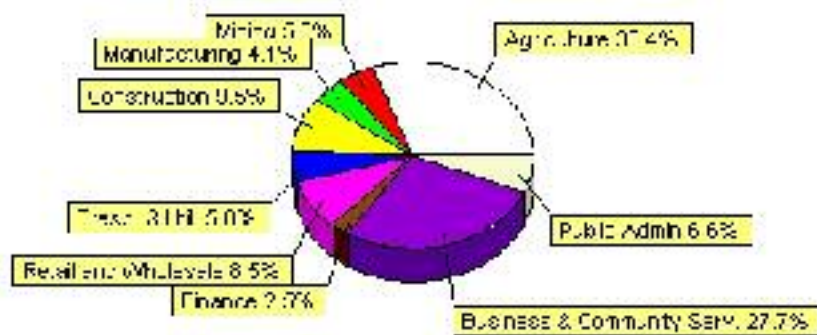
Labour force by activity	1996	2001
In the labour force, both sexes	3,200	3,645
Not in the labour force, both sexes	730	1,035
Total population 15 and over	3,935	4,685
Employed, both sexes	3,100	3,505
Unemployed, both sexes	100	145
Participation rate, both sexes	81.00%	78.00%
Unemployment rate, both sexes	3.00%	4.00%

Source: Statistics Canada 1996 & 2001 Census (numbers may not add up due to rounding)

Labour Force by Industry Division	1996	% of total	2001	% of total
Agriculture	1,155	36.49%	1,105	30.44%
Mining	160	5.06%	180	4.96%
Manufacturing	130	4.11%	150	4.13%
Construction	215	6.79%	345	9.50%
Transportation. & Utilities	185	5.85%	210	5.79%
Retail and Wholesale	425	13.43%	310	8.54%
Finance	70	2.21%	90	2.48%
Business & Community Services	710	22.43%	1,005	27.69%
Public Administration	225	7.11%	240	6.61%
Total All Industries	3,165	100.00%	3,630	100.00%

Source: Statistics Canada 1996 & 2001 Census (numbers may not add up due to rounding)

### Cypress County Labour Force By Industry - 2001



Labour Force by Major Occupational Groups	1996	%	2001	%
Management occupations	120	3.80%	265	7.30%
Business, Finances and administrative occupations	415	13.13%	450	12.40%
Natural and applied sciences and related occupations	50	1.58%	80	2.20%
Health occupations	70	2.22%	180	4.96%
Occupations in social science; education; government and religion	100	3.16%	145	3.99%
Occupations in art; culture; recreation and sport	40	1.27%	35	0.96%

Sales and service occupations	570	18.04%	655	18.04%
Trades; transport; equipment operators and related occupations	485	15.35%	620	17.08%
Occupations unique to primary industry	1,120	35.44%	1,115	30.72%
Occupations unique to processing; manufacturing and utilities	180	5.70%	90	2.48%
Occupations not elsewhere classified	40	1.27%	20	0.55%
Total - All Occupations (major groups)	3,160	100.00%	3,630	100.00%
Females - All Occupations	1,325	41.93%	1,570	43.25%
Males - All Occupations	1,835	58.07%	2,060	56.75%

Source: Statistics Canada 1996 & 2001 Census (numbers may not add up due to rounding)

---

## Income

<b>Family Income (Number of Families)</b>	<b>1996</b>	<b>%</b>	<b>2001</b>	<b>%</b>
less than \$19,999	105	7.42%	135	8.88%
\$20,000 - \$39,999	460	32.51%	365	24.01%
\$40,000 - \$59,999	370	26.15%	405	26.64%
\$60,000 and over	480	33.92%	525	34.54%
Total number of families	1,415	100.00%	1,430	94.08%
Average family income	\$54,340		\$66,177	
Median family income	\$47,883		\$58,104	

Source: Statistics Canada 1996 & 2001 Census (numbers may not add up due to rounding)

<b>Household Income (Number of Households)</b>	<b>1996</b>	<b>%</b>	<b>2001</b>	<b>%</b>
less than \$19,999	205	11.88%	265	12.99%
\$20,000 - \$39,999	545	31.59%	435	21.32%
\$40,000 - \$59,999	480	27.83%	465	22.79%
\$60,000 and over	115	6.67%	875	42.89%
Total number of households	1,725	100.00%	2,040	100.00%
Average household income	\$50,935		\$61,298	
Median household income	\$46,295		\$52,390	

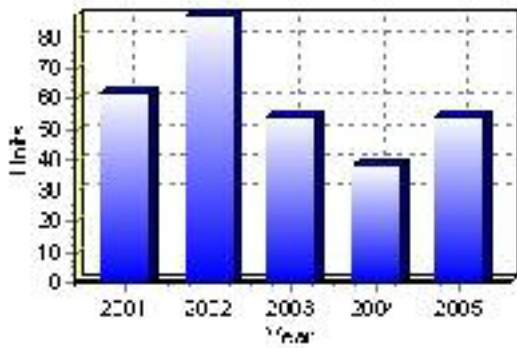
Source: Statistics Canada 1996 & 2001 Census (numbers may not add up due to rounding)

# Building Permits

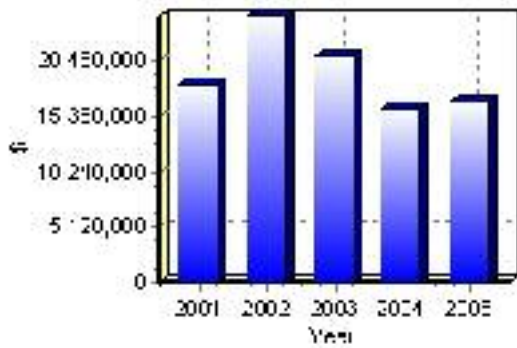
Total Building Permit Values	2001	2002	2003	2004	2005
Building Permits Value, Commercial	\$1,921,000	\$5,867,000	\$5,432,000	\$6,974,000	\$2,507,000
Building Permits Value, Industrial	\$6,481,000	\$3,872,000	\$5,376,000	\$382,000	\$1,594,000
Building Permits Value, Institutional	\$0	\$114,000	\$42,000	\$0	\$0
Building Permits Value, Residential	\$10,000,000	\$14,759,000	\$10,039,000	\$8,728,000	\$12,483,000
Building Permits Value, Total	\$18,402,000	\$24,612,000	\$20,889,000	\$16,084,000	\$16,584,000
Total Housing Starts	62	87	54	38	54

Source: Statistics Canada 2000-2004 Building Permits (numbers may not add up due to rounding)

## Total Housing Starts



## Value of Building Permits





## Dwellings

<b>Occupied Private Dwellings by Type</b>	<b>1996</b>	<b>% of total</b>	<b>2001</b>	<b>% of total</b>
Apartments	0	0.00%	15	0.74%
Detached Duplexes	0	0.00%	0	0.00%
Movable Dwellings	180	10.40%	185	9.07%
Other single attached house	0	0.00%	0	0.00%
Row and semi-detached house	10	0.58%	5	0.25%
Single-detached house	1,530	88.44%	1,835	89.95%
Total number of occupied private dwellings	1,730	100.00%	2,040	100.00%
Private dwellings, owned	1,445	83.53%	1,705	83.58%
Private Dwellings, rented	280	16.18%	335	16.42%

Source: Statistics Canada 1996 & 2001 Census (numbers may not add up due to rounding)

<b>Private Dwellings by Period of Construction</b>	<b># of Dwellings</b>	<b>% of total</b>
Period of construction, before 1946	180	8.80%
Period of construction, 1946 - 1960	270	13.20%
Period of construction, 1961 - 1970	215	10.51%
Period of construction, 1971 - 1980	565	27.63%
Period of construction, 1981 - 1990	345	16.87%
Period of construction, 1991 - 2001	470	22.98%
Total number of private dwellings constructed	2,045	100.00%

Source: Statistics Canada 2001 Census (numbers may not add up due to rounding)

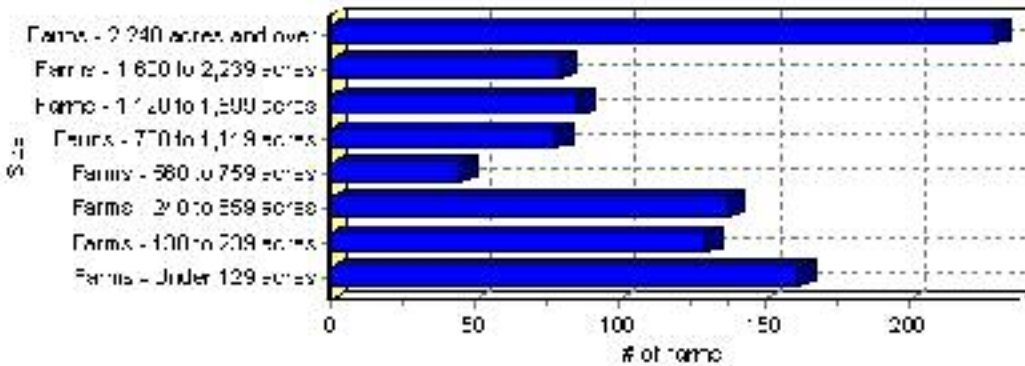
# Farming

Cypress County Total Farm Area : 950 acres

Farms by Total Farm Area (2001)	# of Farms	% of total
Farms - Under 129 acres	162	17.07%
Farms - 130 to 239 acres	130	13.70%
Farms - 240 to 559 acres	138	14.54%
Farms - 560 to 759 acres	45	4.74%
Farms - 760 to 1,119 acres	78	8.22%
Farms - 1,120 to 1,599 acres	86	9.06%
Farms - 1,600 to 2,239 acres	80	8.43%
Farms - 2,240 acres and over	230	24.24%
Total number of farms reporting	949	100.00%

Source: Statistics Canada 2001 Census of Agriculture(numbers may not add up due to rounding)

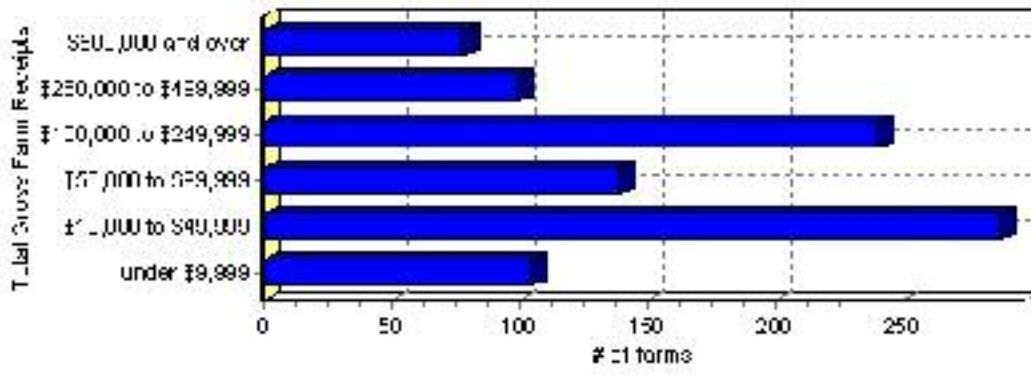
## # of Farms by Total Farm Area



Farms by Total Gross Farm Receipts - 2001	# of Farms	% of total
Farms gross farm receipts - under \$9,999	105	11.06%
Farms gross farm receipts - \$10,000 to \$49,999	288	30.35%
Farms gross farm receipts - \$50,000 to \$99,999	139	14.65%
Farms gross farm receipts - \$100,000 to \$249,999	240	25.29%
Farms gross farm receipts - \$250,000 to \$499,999	99	10.43%
Farms gross farm receipts - \$500,000 and over	78	8.22%
Total number of farms reporting	949	100.00%

Source: Statistics Canada 2001 Census of Agriculture(numbers may not add up due to rounding)

## Total Gross Farm Receipts

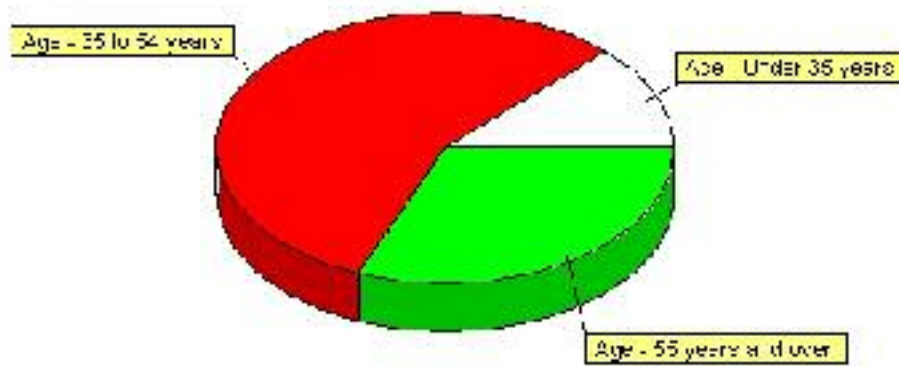


## Farming, Continued

Characteristics of Farm Operators	#	%
Age - Under 35 years	165	12.64%
Age - 35 to 54 years	730	55.94%
Age - 55 years and over	405	31.03%
Average age of operators	49	
Number of operators - Female	340	26.05%
Number of operators - Male	960	73.56%
Total number of operators reporting	1,305	100.00%

Source: Statistics Canada 2001 Census of Agriculture(numbers may not add up due to rounding)

### Age of Farm Operators



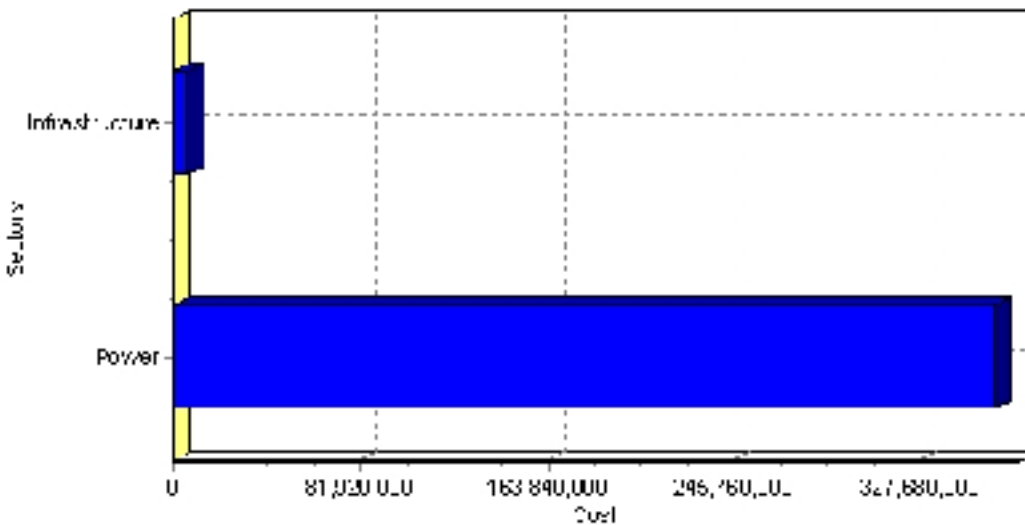
# Projects

## Summary of Projects in Cypress County as of September 2006

Project Sector	Number of Projects	Project Cost
Power	1	\$360,000,000
Infrastructure	1	\$5,900,000
Total	2	\$365,900,000

This inventory lists projects in Alberta that have recently been completed, are under construction, or are proposed to start construction. Not all projects are listed due to reasons of confidentiality and/or due to information not being available at the time of printing. Project data is obtained from public information sources, where possible, this data has been verified with the project proponent/developer, users of the Inventory may wish to confirm project data with the proponent/developer. The inventory does not breakdown project expenditures by any given year. The cost of a project is the value of expenditures expected over all phases of project construction, which may span over two or more years. Cost of projects listed in the Inventory are estimated values only. Source: Alberta Economic Development, 2004.

## Value of Projects by Sector (as of September 2006)



Project Status	Number of Projects	Project Cost
Proposed	1	\$360,000,000
Under Construction	1	\$5,900,000
Total	2	\$365,900,000

This inventory lists projects in Alberta that have recently been completed, are under construction, or are proposed to start construction. Not all projects are listed due to reasons of confidentiality and/or due to information not being available at the time of printing. Project data is obtained from public information sources, where possible, this data has been verified with the project proponent/developer, users of the Inventory may wish to confirm project data with the proponent/developer. The inventory does not breakdown project expenditures by any given year. The cost of a project is the value of expenditures expected over all phases of project construction, which may span over two or more years. Cost of projects listed in the Inventory are estimated values only. Source: Alberta Economic Development, 2004.

## Largest Projects in Cypress County as of September 2006

Company Name	Project Description	Project Location	Project Cost	Construction Schedule	Status
West WindEau Inc.	Wild Rose Wind Farm (200MW)	Cypress County (S of Irvine)	\$360,000,000	-	Proposed
Alberta Infrastructure and Transportation	Highway 1 Pave	Cypress County (W of Redcliff to W of Medicine Hat)	\$5,900,000	2006-2006	Under Construction

Disclaimer: Information in this profile has been provided from a variety of external sources. Although every effort has been made to ensure the accuracy, currency and reliability of the content and data, AlbertaFirst.com Ltd. accepts no responsibility in this regard.

© AlbertaFirst.com Ltd., 2006.