

Grande Cache

www.grandecache.ca

Welcome

Welcome to our community! This profile is intended to provide you with basic information about our town. If you require additional information, please contact our representative in the "*Key Contacts for Business Development*" section found at the end of this profile.

Area Overview

The **Town of Grande Cache** gateway to the Willmore Wilderness Park, is a vibrant community of 3,800 people. The town was planned and built starting in 1969 in response to resource development. Accordingly, visitors will find a modern town in an unspoiled wilderness environment.

The early planners were very sensitive to the need to protect and maintain the natural splendour of the area and the integrity of the town's beauty. Accordingly, Grande Cache is located on the southwest shoulder of Grande Mountain overlooking the spectacular Front Ranges of the Canadian Rockies. Resource industries are located about 20 km from the municipal boundaries, so that the town retains its unspoiled scenic environment.

As a planned community, Grande Cache has uniformly modern facilities to serve both citizens and visitors. Grande Cache combines the best of both worlds; modern services and accommodations surrounded by pristine mountain wilderness.

Community Services

Town of Grande Cache

10001 Hoppe Avenue
Box 300
Grande Cache, Alberta
T0E 0Y0
Tel: 780-827-3362
Fax: 780-827-2406

Mrs. Louise Krewusik, Mayor

Mr. Duane Dukart, Municipal Administrator

M.D. of Greenview No. 16

Box 1079
Valleyview, Alberta
T0H 3N0
Tel: 780-524-3193
Fax: 780-524-4307

Mr. Tony Yelenik, Reeve

Ms Sally Rooson, Development Officer

Town Office
Municipal Library

Provincial

- Community and Occupational Health
- Attorney General
- Solicitor General
- Forestry, Lands and Wildlife
- Family and Social Services
- Transportation and Utilities
- Native Counselling, Referral and Recreation

Federal

- Employment and Immigration
- Canada Canada Post Office
- Correctional Services Canada

Community Lifestyle

Recreation

Grande Cache is the gateway to the Willmore Wilderness Park, 4,464 square km of pure unspoiled mountain wilderness. Motorized vehicles are not allowed in the park. A

network of trails, most of which were established by natives, trappers and outfitters, provide access to the backcountry. Fast-flowing rivers and streams with waterfalls are found throughout the park.

The natural setting of the surrounding Grande Cache area provides opportunities for a wide range of recreational pursuits, including horseback tours, photography, canoeing, hiking, fishing, hunting, camping, white water paddling, mountain biking, hang gliding, jet boating, heli touring, cat skiing, cross-country skiing, ice climbing and wildlife viewing.

Grande Cache has a rich tradition of hunting and fishing. A variety of game fish are available to the sport-fishing enthusiast. Rainbow trout, brook trout, Dolly Varden [bull trout], Arctic grayling and Rocky Mountain whitefish populate the lakes and streams. As for hunting, you can choose to hunt on your own or use the services of several outfitters and guides in the area. Elk, moose, mule deer, whitetail deer, bighorn sheep, mountain goat, grizzly bears, black bears, and wolf are all plentiful in the area.

Local recreation facilities include the Akasaka Recreation Complex [swimming pool, arena, curling rink, fitness room], tennis courts, ball diamonds, a golf course, Fireman's Park, Grande Cache Lake [day-use, boating, fishing], and Victor Lake [canoeing, fishing].

Nearby campgrounds include Hide-A-Way Camp, Blue Bridge Campground, Grande Cache Municipal Campground, Pierre Grey Lake Campground, and Mason Creek Day use area.

Community Organizations

Grande Cache has a wide range of community and recreational organizations, including the Bighorn Golden Age Club, Block Parents, Chamber of Commerce, Fire Department Ladies Auxiliary, Independent Order of Foresters, Legion Ladies Auxiliary, Lions Club, Royal Canadian Legion, TOPS, Catholic Women's League, Knights of Columbus, Pineview Alliance Women's Auxiliary, United Church Women, Centre Stage Dance Club, Palette Pals Art Club, Bridge Club, Dart League, Fish, Game and Gun Club, Grande Cache Saddle Club, Rocky Mountain Riding Association, Akasaka Figure Skating Club, Grande Cache Golf & Country Club, Grande Cache Karate Club, Grande Cache Mixed Slow-pitch Association, Minor Hockey Association, Muttoneer Hockey Club, the Otters Swim Club and ladies hockey.

Religious Services

- Church of Jesus Christ of Latter Day Saints
- Full Gospel Assembly
- Grande Cache United Church

- Holy Cross Parish
- Kingdom Hall of Jehovah's Witness
- Mount Carmel Lutheran Church
- Pineview Alliance Church

Special Annual Events/Attractions

- Canadian Death Race

Hospitality

- New Comer's Package
- Meals on Wheels

Accommodation

- Acorn Motel
- Alpine Lodge Motel
- Best Western Getaway & Hotel
- Big Horn Motor Inn
- Grande Cache Hotel
- Inn on the Valley
- Misty Mountain Suites & Apartments
- Bed & Breakfast

Restaurants

A variety of restaurants are available in Grande Cache and they provide a good range of foods from hearty fare to specialty offerings with more adventurous taste buds. From meat and potatoes to pizza to fine dining, there are plenty of culinary options.

Economic Base

Forestry, power generation, Federal correction services and tourism define Grande Cache's economic base. Coal mining still plays an important role in the local economy, but the economic focus has shifted to the development of the huge tourism potential in the immediate area.

Economic Facts

Major Businesses Products/Services

Maxim Power Corp. – H R Milner Station
 C&C Wood Products Ltd.
 Grande Cache Coal Corporation
 Correctional Service Canada

Financial Institutions

Canadian Imperial Bank of Commerce
 Alberta Treasury Branch [sub-office]

Education

Grande Cache is part of the Grande Yellowhead Regional School Division #35, headquartered in Edson [Tel: 780-723-4471].

Daycare/Nursery

- Grande Cache Day Care and Family Day Home Program

Public Schools in Grande Cache include :

- Sheldon Coates Elementary School [K-3]
- Sunrise Christian Program [K-9]
- Summitview School [4-8]
- Grande Cache Community High School [9-12]

Emergency Services

Fire Protection

Grande Cache is served by a 35-member volunteer fire department, and has 3 pumper trucks [Tel: 911]. Correctional Services Canada provides back up.

Police Services

Grande Cache is served by a local detachment of the Royal Canadian Mounted Police [RCMP] [Tel: 780-827-2222].

Ambulance Services

Grande Cache has a full time BLS service with 4 full time and several part time and casual personnel. Grande Cache utilizes 3 ambulances and 2 rescue trucks. [Tel: 911].

The Grande Prairie Ambulance Service provides Paramedic Air Ambulance to Edmonton **[Tel: 911]**.

Health Care

Grande Cache Community Health Complex has 10 acute care beds, 5 physicians, an Aboriginal Health Liaison, Palliative/Pediatric/Pastoral care, Physiotherapy, X-ray facilities and laboratory.

The Health Unit maintains an office in the Provincial Building.

Other medical services include a medical clinic, a public health nurse, chiropractor, two physiotherapists and one dentist. The nearest full-time optometrist is located in Hinton or Grande Prairie, but an optometrist has an office in town which is open one day per week.

Veterinary services are available one day per week; full time services are located in Hinton and Grande Prairie.

Key Contacts for Business Development

Municipal T

own of Grande Cache

P.O. Box 300

Grande Cache, Alberta

T0E 0Y0

Tel: 780-827-3362

Fax: 780-827-2406

Louise Krewusik, *Mayor*

Duane Dukart, *Administrator*

Economic Development

Team Grande Cache
Terry Coray, Chairperson
Tel: 780-827-4944

Stan Wall or Colleen Gross
Tel: 780-827-2129

Provincial (updated December 2004)

Ivan Strang Member of the Legislative Assembly [MLA]
West Yellowhead Constituency

Constituency Office

P.O. Box 7859
505 - 50 Street
Edson, AB T7E 1V9
Phone: (780) 723-3601
Toll Free: 1-800-661-6517
Fax: (780) 723-2915
west.yellowhead@assembly.ab.ca

Legislature Office

#612 Legislature Annex
9718 - 107 Street
Edmonton, AB
T5K 1E4
Phone: (780) 415-0986
Fax: (780) 415-0951

Alberta Economic Development

Cathy Goulet, Regional Director
cathy.goulet@gov.ab.ca
Christine Lockhart, Information Officer
chris.lockhart@gov.ab.ca

111 Provincial Building
111 - 54 Street
Edson, Alberta
T7E 1T2
Tel: 780-723-8229
Fax: 780-723-8240

Federal (May 2006)

Rob Merrifield
Member of Parliament [MP]
Yellowhead Constituency

Parliamentary Address

House of Commons
Ottawa, Ontario
K1A 0A6
Telephone: (613) 992-1653
Fax: (613) 992-3459
E-Mail: Merrifield.R@parl.gc.ca

Constituency Address

119 - 50th Street, PO Box 7887
Edson, Alberta
T7E 1V9

Telephone: (780) 723-6068 1-800-268-7117
Fax: (780) 723-5060
TTY:
E-Mail:
5023 - 50 Avenue, P.O. Box 1495
Whitecourt, Alberta
T7S 1P3
Telephone: (780) 706-2067
Fax: (780) 706-2085

Location

The **Town of Grande Cache** is located in the Municipal District of Greenview #16, on the easterly edge of Willmore Wilderness Park. It is 140 km northwest of Hinton, and 180 km south of Grande Prairie, on Highway 40.

Post Secondary Education

The Yellowhead Education Consortium offers a wide variety of post-secondary programs linked to the University of Alberta and Athabasca, Northern Alberta Institute of Technology [NAIT], Grant MacEwan Community College and Grande Prairie Regional College.

Taxation

Mill Rates [2004]

Residential - Public 16.066

Non-Residential - Public 22.645

| | <u>Residential/Farmland</u> | <u>Non-Residential</u> |
|---|-----------------------------|------------------------|
| 2005 | | |
| Municipal Tax Rate | 11.1410 | 15.1110 |
| Education - Alberta School Foundation Fund Tax Rate | 4.6320 | 6.9090 |
| Seniors Lodge Accommodation Tax Rate | .3200 | .3200 |

Transportation

Air Service

Grande Cache Municipal Airport, located 19 km from town, has a 5,000-metre runway and is operated on a 24-hour basis. The airport handles charter and emergency flight transportation.

Rail Service

Alberta Rail-Net serves Grande Cache under contractual arrangements. Passenger service is provided by Canadian National Railways to Hinton, which is the closest depot.

Highways

Grande Cache is connected to Hinton to the south, and Grande Prairie to the north, via Highway 40, the Bighorn Highway.

Trucking Firms & Hot Shot Services

- BTS Byers Transportation Systems Inc.

- Grimshaw Trucking
- All-Ways Transfer & Hot Shot (Grande Prairie to Grande Cache)
- Advantage Hot Shot Services

Bus Services

- Greyhound Canada

Couriers

- Loomis Courier
- Purolator Couriers
- Greyhound Courier
- Express Bomars Ventures

Taxis

- Grande Taxi

Utilities

Electricity

ATCO Electric

Box 299

Grande Cache, Alberta

T0E 0Y0

Tel: 800-668-2248

Natural Gas

Alta Gas Utilities

Box 97

10023 - 99 Street

Grande Cache, Alberta

T0E 0Y0

Tel: 800-242-3447

Water Supply

Victor Lake and Grande Cache Lake are the Town's water sources. The water is filtered and chlorinated, then distributed through a modern piping system.

Waste Management

Sewage treatment is provided by a secondary wastewater treatment plant. The facility has the capacity for twice the current load.

Residential refuse is collected weekly, while the business sector is serviced 3 times a week. A modified landfill facility is located 1.5 km from town.

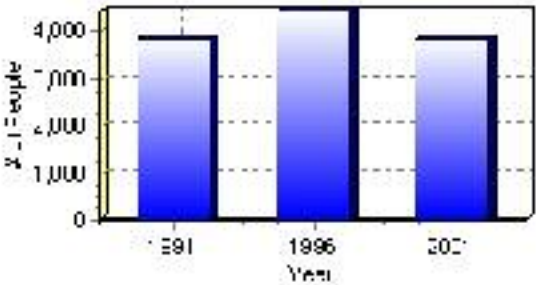
Population

Total Population

| | |
|-------------------------------|---------|
| Population 2004* | 3,828 |
| Population 2003* | 3,828 |
| Population 2002* | 3,828 |
| Population 2001** | 3,830 |
| Population 2000* | 4,441 |
| Population 1996** | 4,441 |
| Population 1991** | 3,842 |
| Population % change 1991-1996 | 13.49% |
| Population % change 1996-2001 | -16.01% |

* Source: Official Population List, Alberta Municipal Affairs
** Source: Statistics Canada 1991, 1996, & 2001 Census

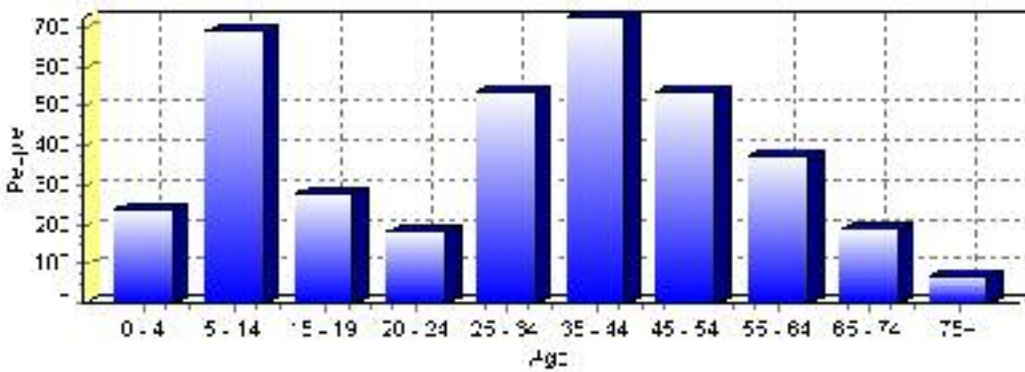
Total Population 1991-2001



| Population by Age and Gender | 1996 Male | 1996 Female | 1996 Total | 2001 Male | 2001 Female | 2001 Total |
|------------------------------|-----------|-------------|------------|-----------|-------------|------------|
| Age 0 - 4 | 190 | 180 | 370 | 130 | 110 | 240 |
| Age 5 - 14 | 395 | 370 | 765 | 365 | 325 | 690 |
| Age 15 - 19 | 195 | 190 | 385 | 135 | 145 | 280 |
| Age 20 - 24 | 175 | 150 | 325 | 105 | 80 | 185 |
| Age 25 - 34 | 445 | 355 | 800 | 275 | 260 | 535 |
| Age 35 - 44 | 455 | 380 | 835 | 400 | 325 | 725 |
| Age 45 - 54 | 330 | 260 | 590 | 290 | 245 | 535 |
| Age 55 - 64 | 155 | 105 | 260 | 195 | 180 | 375 |
| Age 65 - 74 | 40 | 30 | 70 | 115 | 75 | 190 |
| Age 75 and older | 10 | 20 | 30 | 35 | 35 | 70 |
| Total All Persons | 2,410 | 2,035 | 4,445 | 2,055 | 1,775 | 3,830 |

Source: Statistics Canada 1996 & 2001 Census (numbers may not add up due to rounding)

Grande Cache Population by Age Group (2001)

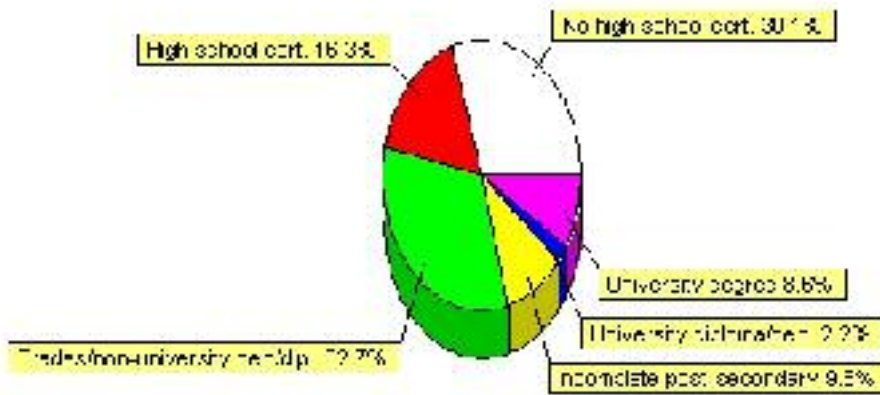


Education Statistics

| Highest level of schooling for Population 20yrs and older | 2001 | % |
|---|-------|---------|
| People without high school certificates | 750 | 30.12% |
| People with high school certificates | 405 | 16.27% |
| People with trades or non-university certificate or diploma | 815 | 32.73% |
| People with post-secondary education (not completed) | 245 | 9.84% |
| People with university diploma/certificate | 55 | 2.21% |
| People with university degree | 215 | 8.63% |
| Total Population 20 years and older | 2,490 | 100.00% |

Source: Statistics Canada 2001 Census (numbers may not add up due to rounding)

Grande Cache Highest Level of Schooling 2001



| Population with Post Secondary Qualifications | 1996 | % | 2001 | % |
|---|-------|---------|-------|---------|
| Agriculture and biological sciences | 40 | 3.14% | 35 | 3.23% |
| Commerce, management and business administration | 250 | 19.61% | 185 | 17.05% |
| Educational, recreational and counseling services | 85 | 6.67% | 135 | 12.44% |
| Engineering and applied science tech. and trades | 525 | 41.18% | 375 | 34.56% |
| Engineering and applied sciences | 15 | 1.18% | 40 | 3.69% |
| Fine and applied arts | 60 | 4.71% | 35 | 3.23% |
| Health professionals, science and technologies | 160 | 12.55% | 105 | 9.68% |
| Humanities and related fields | 10 | 0.78% | 65 | 5.99% |
| Mathematics and physical sciences | 10 | 0.78% | 20 | 1.84% |
| Social sciences and related fields | 95 | 7.45% | 95 | 8.76% |
| Other and/or no specialization | 0 | 0.00% | 10 | 0.92% |
| Total people with post secondary qualifications | 1,275 | 100.00% | 1,085 | 100.00% |
| Females with post-secondary qualifications | 555 | 43.53% | 465 | 42.86% |
| Males with post-secondary qualifications | 720 | 56.47% | 620 | 57.14% |

Source: Statistics Canada 1996 & 2001 Census (numbers may not add up due to rounding)

Labour Force

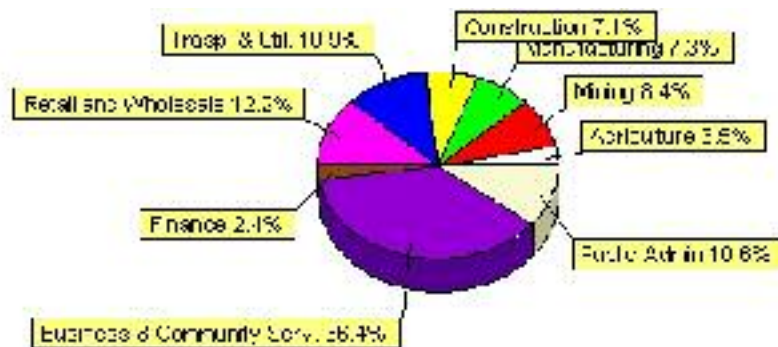
| Labour force by activity | 1996 | 2001 |
|-------------------------------------|--------|--------|
| In the labour force, both sexes | 2,335 | 1,875 |
| Not in the labour force, both sexes | 815 | 900 |
| Total population 15 and over | 3,150 | 2,775 |
| Employed, both sexes | 2,190 | 1,645 |
| Unemployed, both sexes | 140 | 225 |
| Participation rate, both sexes | 74.00% | 68.00% |
| Unemployment rate, both sexes | 6.00% | 12.00% |

Source: Statistics Canada 1996 & 2001 Census (numbers may not add up due to rounding)

| Labour Force by Industry Division | 1996 | % of total | 2001 | % of total |
|-----------------------------------|-------|------------|-------|------------|
| Agriculture | 80 | 3.48% | 65 | 3.53% |
| Mining | 655 | 28.48% | 155 | 8.42% |
| Manufacturing | 170 | 7.39% | 135 | 7.34% |
| Construction | 90 | 3.91% | 130 | 7.07% |
| Transportation. & Utilities | 175 | 7.61% | 200 | 10.87% |
| Retail and Wholesale | 250 | 10.87% | 225 | 12.23% |
| Finance | 30 | 1.30% | 45 | 2.45% |
| Business & Community Services | 755 | 32.83% | 670 | 36.41% |
| Public Administration | 300 | 13.04% | 195 | 10.60% |
| Total All Industries | 2,300 | 100.00% | 1,840 | 100.00% |

Source: Statistics Canada 1996 & 2001 Census (numbers may not add up due to rounding)

Grande Cache Labour Force By Industry - 2001



| Labour Force by Major Occupational Groups | 1996 | % | 2001 | % |
|---|------|--------|------|-------|
| Management occupations | 175 | 7.59% | 175 | 9.51% |
| Business, Finances and administrative occupations | 260 | 11.28% | 155 | 8.42% |
| Natural and applied sciences and related occupations | 80 | 3.47% | 80 | 4.35% |
| Health occupations | 95 | 4.12% | 30 | 1.63% |
| Occupations in social science; education; government and religion | 165 | 7.16% | 120 | 6.52% |
| Occupations in art; culture; recreation and sport | 25 | 1.08% | 45 | 2.45% |

| | | | | |
|--|-------|---------|-------|---------|
| Sales and service occupations | 515 | 22.34% | 570 | 30.98% |
| Trades; transport; equipment operators and related occupations | 605 | 26.25% | 515 | 27.99% |
| Occupations unique to primary industry | 250 | 10.85% | 75 | 4.08% |
| Occupations unique to processing; manufacturing and utilities | 120 | 5.21% | 70 | 3.80% |
| Occupations not elsewhere classified | 35 | 1.52% | 35 | 1.90% |
| Total - All Occupations (major groups) | 2,305 | 100.00% | 1,840 | 100.00% |
| Females - All Occupations | 885 | 38.39% | 760 | 41.30% |
| Males - All Occupations | 1,420 | 61.61% | 1,075 | 58.42% |

Source: Statistics Canada 1996 & 2001 Census (numbers may not add up due to rounding)

Income

| Family Income (Number of Families) | 1996 | % | 2001 | % |
|---|-------------|----------|-------------|----------|
| less than \$19,999 | 55 | 5.05% | 105 | 11.23% |
| \$20,000 - \$39,999 | 120 | 11.01% | 215 | 22.99% |
| \$40,000 - \$59,999 | 240 | 22.02% | 240 | 25.67% |
| \$60,000 and over | 675 | 61.93% | 345 | 36.90% |
| Total number of families | 1,090 | 100.00% | 905 | 96.79% |
| Average family income | \$68,634 | | \$60,937 | |
| Median family income | \$65,576 | | \$59,375 | |

Source: Statistics Canada 1996 & 2001 Census (numbers may not add up due to rounding)

| Household Income (Number of Households) | 1996 | % | 2001 | % |
|--|-------------|----------|-------------|----------|
| less than \$19,999 | 160 | 11.43% | 215 | 16.17% |
| \$20,000 - \$39,999 | 185 | 13.21% | 260 | 19.55% |
| \$40,000 - \$59,999 | 270 | 19.29% | 265 | 19.92% |
| \$60,000 and over | 225 | 16.07% | 585 | 43.98% |
| Total number of households | 1,400 | 100.00% | 1,330 | 100.00% |
| Average household income | \$63,725 | | \$56,435 | |
| Median household income | \$62,176 | | \$52,501 | |

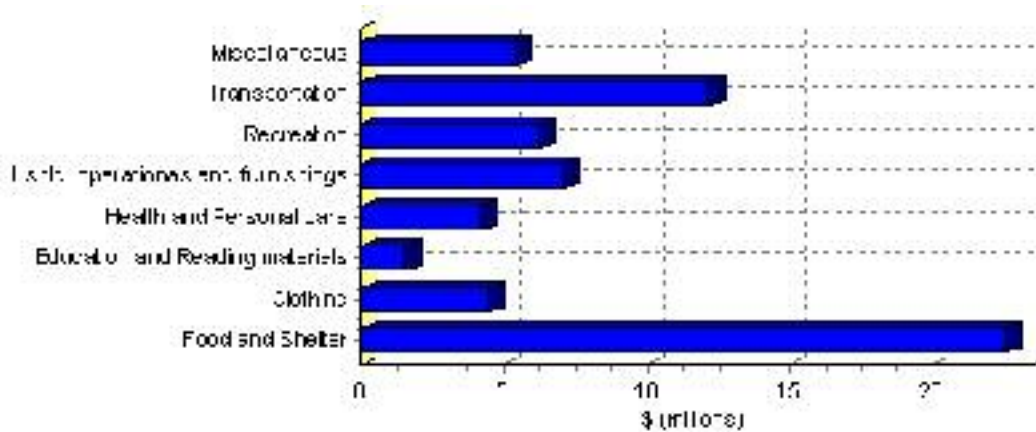
Source: Statistics Canada 1996 & 2001 Census (numbers may not add up due to rounding)

Family Expenditure

| Expenditure Category | 1992 | % of total | 1996 | % of total |
|-----------------------------------|--------------|------------|--------------|------------|
| Food and Shelter | \$16,101,065 | 35.84% | \$22,588,954 | 35.43% |
| Clothing | \$3,309,670 | 7.37% | \$4,491,125 | 7.04% |
| Education and Reading materials | \$1,139,815 | 2.54% | \$1,544,391 | 2.42% |
| Health and Personal care | \$2,711,975 | 6.04% | \$4,175,699 | 6.55% |
| Hshld. operations and furnishings | \$5,018,065 | 11.17% | \$7,052,655 | 11.06% |
| Recreation | \$4,190,865 | 9.33% | \$6,261,884 | 9.82% |
| Transportation | \$9,096,355 | 20.25% | \$12,234,926 | 19.19% |
| Miscellaneous | \$3,359,300 | 7.48% | \$5,413,814 | 8.49% |
| Total Current Consumption | \$44,930,110 | 100.00% | \$63,763,448 | 100.00% |
| Total # of Households | 1,200 | | 1,404 | |
| Average Consumption per Household | \$37,442 | | \$45,416 | |

Source: Statistics Canada Family Expenditure Survey 1992 & 1996 (numbers may not add up due to rounding).

Grande Cache Family Expenditures (1996)

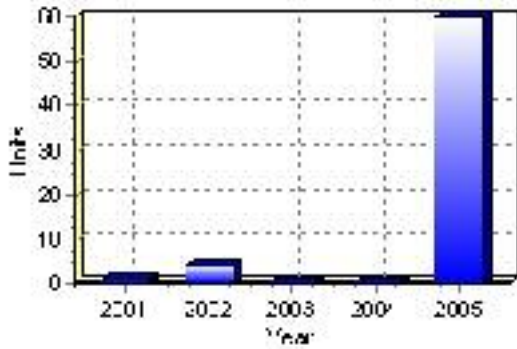


Building Permits

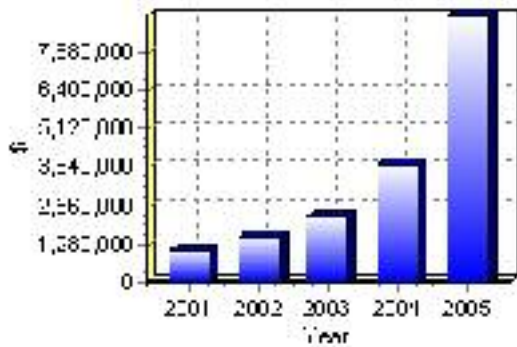
| Total Building Permit Values | 2001 | 2002 | 2003 | 2004 | 2005 |
|---------------------------------------|-------------|-------------|-------------|-------------|-------------|
| Building Permits Value, Commercial | \$125,000 | \$499,000 | \$1,930,000 | \$557,000 | \$4,420,000 |
| Building Permits Value, Industrial | \$0 | \$0 | \$0 | \$190,000 | \$0 |
| Building Permits Value, Institutional | \$790,000 | \$0 | \$0 | \$3,012,000 | \$0 |
| Building Permits Value, Residential | \$164,000 | \$1,012,000 | \$262,000 | \$182,000 | \$4,462,000 |
| Building Permits Value, Total | \$1,079,000 | \$1,511,000 | \$2,192,000 | \$3,941,000 | \$8,882,000 |
| Total Housing Starts | 1 | 4 | 0 | 0 | 60 |

Source: Statistics Canada 2000-2004 Building Permits (numbers may not add up due to rounding)

Total Housing Starts



Value of Building Permits



Dwellings

| Occupied Private Dwellings by Type | 1996 | % of total | 2001 | % of total |
|--|-------------|-------------------|-------------|-------------------|
| Apartments | 200 | 14.29% | 135 | 10.15% |
| Detached Duplexes | 0 | 0.00% | 5 | 0.38% |
| Movable Dwellings | 95 | 6.79% | 85 | 6.39% |
| Other single attached house | 0 | 0.00% | 5 | 0.38% |
| Row and semi-detached house | 200 | 14.29% | 165 | 12.41% |
| Single-detached house | 905 | 64.64% | 945 | 71.05% |
| Total number of occupied private dwellings | 1,400 | 100.00% | 1,330 | 100.00% |
| Private dwellings, owned | 945 | 67.50% | 955 | 71.80% |
| Private Dwellings, rented | 465 | 33.21% | 375 | 28.20% |

Source: Statistics Canada 1996 & 2001 Census (numbers may not add up due to rounding)

| Private Dwellings by Period of Construction | # of Dwellings | % of total |
|--|-----------------------|-------------------|
| Period of construction, before 1946 | 0 | 0.00% |
| Period of construction, 1946 - 1960 | 15 | 1.13% |
| Period of construction, 1961 - 1970 | 335 | 25.28% |
| Period of construction, 1971 - 1980 | 680 | 51.32% |
| Period of construction, 1981 - 1990 | 180 | 13.58% |
| Period of construction, 1991 - 2001 | 115 | 8.68% |
| Total number of private dwellings constructed | 1,325 | 100.00% |

Source: Statistics Canada 2001 Census (numbers may not add up due to rounding)

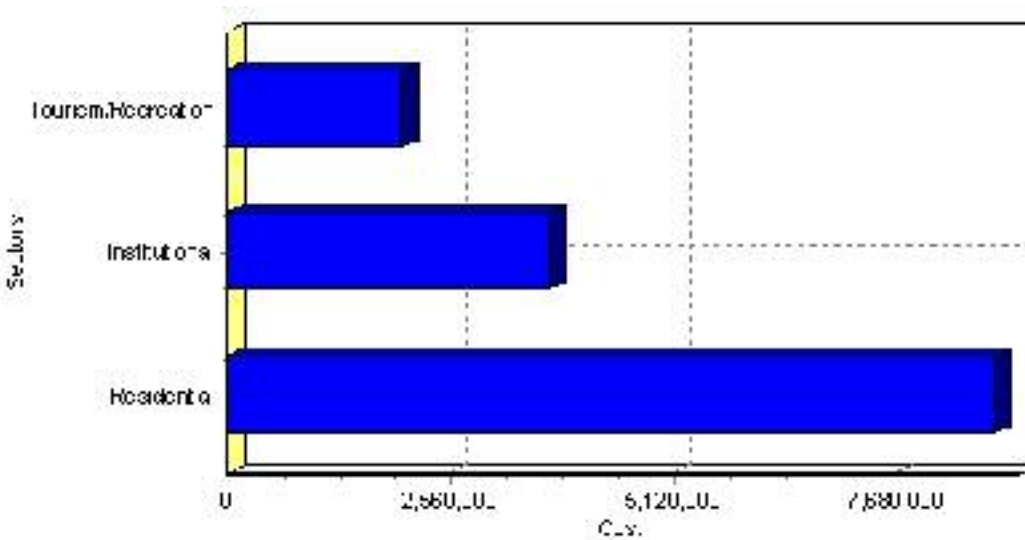
Projects

Summary of Projects in Grande Cache as of September 2006

| Project Sector | Number of Projects | Project Cost |
|--------------------|--------------------|--------------|
| Residential | 2 | \$8,800,000 |
| Institutional | 1 | \$3,700,000 |
| Tourism/Recreation | 1 | \$2,000,000 |
| Total | 4 | \$14,500,000 |

This inventory lists projects in Alberta that have recently been completed, are under construction, or are proposed to start construction. Not all projects are listed due to reasons of confidentiality and/or due to information not being available at the time of printing. Project data is obtained from public information sources, where possible, this data has been verified with the project proponent/developer, users of the Inventory may wish to confirm project data with the proponent/developer. The inventory does not breakdown project expenditures by any given year. The cost of a project is the value of expenditures expected over all phases of project construction, which may span over two or more years. Cost of projects listed in the Inventory are estimated values only. Source: Alberta Economic Development, 2004.

Value of Projects by Sector (as of September 2006)



| Project Status | Number of Projects | Project Cost |
|----------------|--------------------|--------------|
| Proposed | 4 | \$14,500,000 |
| Total | 4 | \$14,500,000 |

This inventory lists projects in Alberta that have recently been completed, are under construction, or are proposed to start construction. Not all projects are listed due to reasons of confidentiality and/or due to information not being available at the time of printing. Project data is obtained from public information sources, where possible, this data has been verified with the project proponent/developer, users of the Inventory may wish to confirm project data with the proponent/developer. The inventory does not breakdown project expenditures by any given year. The cost of a project is the value of expenditures expected over all phases of project construction, which may span over two or more years. Cost of projects listed in the Inventory are estimated values only. Source: Alberta Economic Development, 2004.

Largest Projects in Grande Cache as of September 2006

| Company Name | Project Description | Project Location | Project Cost | Construction Schedule | Status |
|----------------------|--|------------------|--------------|-----------------------|----------|
| Farnell Properties | Condominium Development | Grande Cache | \$5,800,000 | - | Proposed |
| Evergreen Foundation | 'Whispering Pines' Supportive Living Complex | Grande Cache | \$3,700,000 | - | Proposed |
| Farnell Properties | Apartment Building | Grande Cache | \$3,000,000 | - | Proposed |
| Town of Grande Cache | Recreation Centre Upgrades / Expansion | Grande Cache | \$2,000,000 | - | Proposed |

Disclaimer: Information in this profile has been provided from a variety of external sources. Although every effort has been made to ensure the accuracy, currency and reliability of the content and data, AlbertaFirst.com Ltd. accepts no responsibility in this regard.

© AlbertaFirst.com Ltd., 2006.