

Halkirk

halkirk@telusplanet.net

Welcome

The Village of Halkirk offers peaceful country living. If you're looking to live the quiet life, or if you're just passing through, we hope you enjoy your stay.

Area Overview

The Village of Halkirk is located on the west side of the County of Paintearth No. 18 at the intersection of Primary Highway No. 12 and Secondary Highway No. 855.

Community Services

MUNICIPAL:

The Village of Halkirk
P.O.Box 126,
Halkirk, Alberta
T0C 1M0
Tel: 403-884-2462
Fax: 403-884-2113
E-Mail: halkirk@telusplanet.net

Public Works

FEDERAL:

Canada Post.

Community Lifestyle

RECREATION:

The Village of Halkirk offers a modest selection of recreation facilities-they have baseball diamonds, a curling rink, a skating rink, a community hall, camping facilities and a seniors drop-in centre.

The community keeps these facilities well maintained and users will find that the fees are kept at a very reasonable level.

COMMUNITY ORGANIZATIONS:

There are two service clubs in Halkirk, the ELKS Club and the Royal Purple. These Clubs host several events throughout the year - which include a Bullerama several Bingos and other events.

There is one Interdenomination Church in Halkirk.

Economic Base

Halkirk is in the centre of a very productive agricultural region that enjoys a diverse cross-section of production.

In addition to agriculture, there are several major industrial operations located near Halkirk. They include Luscar Mines and the ATCO Power generating station along the Battle River, Delany Energy Manufacturing, The Tankstore Ltd and others.

Education

Mother Theresa Catholic School offers grades K to 9, the student travel to Castor to complete their high school.

Emergency Services

The Village of Halkirk has a volunteer fire department that is well equipped and the volunteers have been trained.

Emergency medical services -911 is linked to the Stettler network and ambulances respond from both Castor and Stettler as needed.

Health Care

Hospital services are located in Castor (20 min. away)

Key Contacts for Business Development

The Village of Halkirk

Box 126

Halkirk, T0C 1M0

Ross Elsasser - Mayor (884-2465)

Doris Cordel - Administrator

Ph. 403-884-2464

Fax. 403-884-2113

E-Mail halkirk@telusplanet.net

Paintearth Economic Partnership Society

Box 509

Castor, T0C 0X0

Jim Klasson EDO

Ph. (toll free) 888-882-3156

fax 403-882-3560

E-Mail jim.klasson@paintearth.ab.ca

PROVINCIAL

Doug Griffiths (MLA)

Battle River-Wainwright Contituency

#130 Legislature Building

10800-97 Avenue

Edmonton AB

T5K 2B6

Tel: 780-422-5369

Fax: 780-422-5385

Constituency Office:
#201, 1006 - 4 Avenue
Wainwright AB
T9W 2R3
Tel: 780-842-6177
Fax: 780-842-3171

FEDERAL

Leon Earl Benoit
Member of Parliament (MP)
Vegreville-Wainwright Constituency
House of Commons
Ottawa, Ontario
K1A 0A6
Tel: 613-992-4171
Fax: 613-996-9011

Constituency Office:
5004 - 49th Street, Professional Building, P.O. Box 300
Mannville, Alberta
T0B 2W0
Tel: 780-763-6130
Toll Free: 1-800-463-1194
Fax: 780-763-6132

Post Secondary Education

Students wishing to advance beyond high school attend colleges in the larger centres.

Distant Education Services are available through the Big Country Education Consortium.

Taxation

	<u>Residential/Farmland</u>	<u>Non-Residential</u>
2005		
Municipal Tax Rate	18.0000	18.0000
Education - Alberta School Foundation Fund Tax Rate	5.3100	7.4600
Seniors Lodge Accommodation Tax Rate	.4480	.4480

Taxes 2002

- Municipal mill rate 15.93
- Education/Res. 5.62
- Commercial 8.25
- Seniors .312

Transportation

The Village is served by several transport companies that work Highway 12.

Greyhound Bus Service is available daily.

Utilities

The natural gas system is owned by the Village and is supplied by The Paintearth Gas Co-op.

Water and sewer is Village owned and operated-the water chlorinated. Power is supplied by ATCO Electric

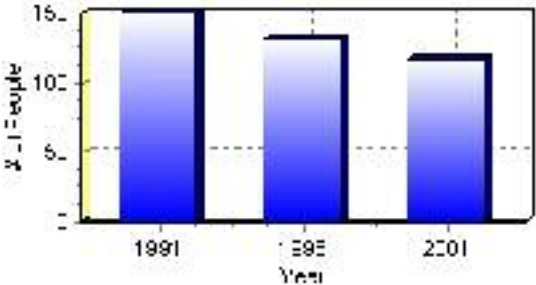
Population

Total Population

Population 2004*	117
Population 2003*	117
Population 2002*	117
Population 2001**	115
Population 2000*	131
Population 1996**	131
Population 1991**	150
Population % change 1991-1996	-14.50%
Population % change 1996-2001	-11.97%

* Source: Official Population List, Alberta Municipal Affairs
** Source: Statistics Canada 1991, 1996, & 2001 Census

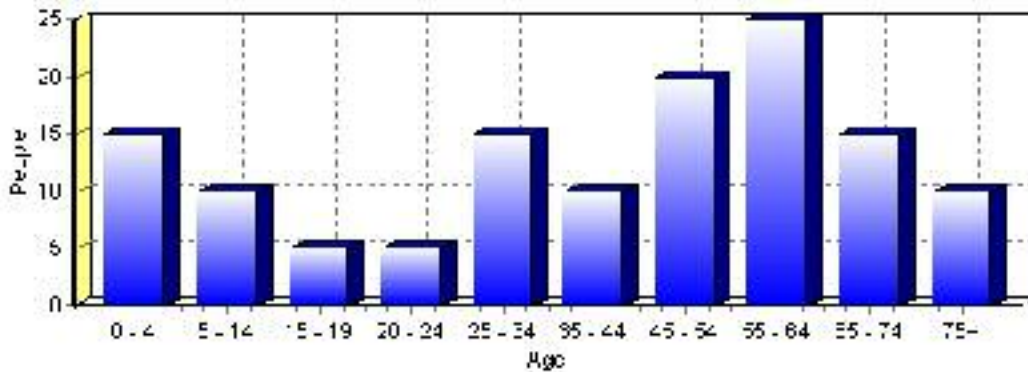
Total Population 1991-2001



Population by Age and Gender	1996 Male	1996 Female	1996 Total	2001 Male	2001 Female	2001 Total
Age 0 - 4	5	5	10	10	5	15
Age 5 - 14	10	5	15	5	5	10
Age 15 - 19	0	10	10	5	0	5
Age 20 - 24	10	5	15	0	5	5
Age 25 - 34	10	0	10	10	5	15
Age 35 - 44	5	5	10	10	0	10
Age 45 - 54	10	10	20	10	10	20
Age 55 - 64	5	10	15	10	15	25
Age 65 - 74	5	10	15	5	10	15
Age 75 and older	10	0	10	5	5	10
Total All Persons	60	70	130	60	55	115

Source: Statistics Canada 1996 & 2001 Census (numbers may not add up due to rounding)

Halkirk Population by Age Group (2001)

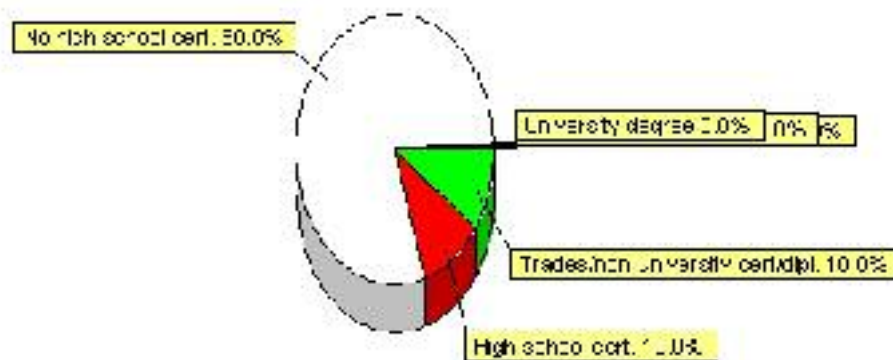


Education Statistics

Highest level of schooling for Population 20yrs and older	2001	%
People without high school certificates	80	80.00%
People with high school certificates	10	10.00%
People with trades or non-university certificate or diploma	10	10.00%
People with post-secondary education (not completed)	0	0.00%
People with university diploma/certificate	0	0.00%
People with university degree	0	0.00%
Total Population 20 years and older	100	100.00%

Source: Statistics Canada 2001 Census (numbers may not add up due to rounding)

Halkirk Highest Level of Schooling 2001



Population with Post Secondary Qualifications	1996	%	2001	%
Agriculture and biological sciences	0	0.00%	10	100.00%
Commerce, management and business administration	10	40.00%	0	0.00%
Educational, recreational and counseling services	0	0.00%	0	0.00%
Engineering and applied science tech. and trades	15	60.00%	0	0.00%
Engineering and applied sciences	0	0.00%	0	0.00%
Fine and applied arts	0	0.00%	0	0.00%
Health professionals, science and technologies	0	0.00%	0	0.00%
Humanities and related fields	0	0.00%	0	0.00%
Mathematics and physical sciences	0	0.00%	0	0.00%
Social sciences and related fields	0	0.00%	0	0.00%
Other and/or no specialization	0	0.00%	0	0.00%
Total people with post secondary qualifications	25	100.00%	10	100.00%
Females with post-secondary qualifications	10	40.00%	0	0.00%
Males with post-secondary qualifications	15	60.00%	10	100.00%

Source: Statistics Canada 1996 & 2001 Census (numbers may not add up due to rounding)

Labour Force

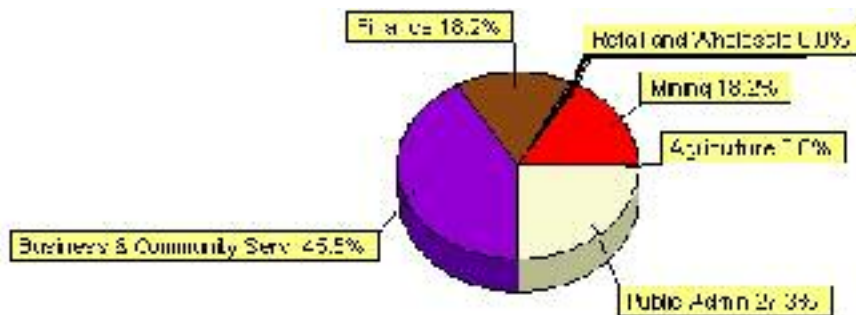
Labour force by activity	1996	2001
In the labour force, both sexes	50	55
Not in the labour force, both sexes	65	45
Total population 15 and over	115	100
Employed, both sexes	45	55
Unemployed, both sexes	0	0
Participation rate, both sexes	43.00%	55.00%
Unemployment rate, both sexes	0.00%	0.00%

Source: Statistics Canada 1996 & 2001 Census (numbers may not add up due to rounding)

Labour Force by Industry Division	1996	% of total	2001	% of total
Agriculture	10	20.00%	0	0.00%
Mining	0	0.00%	10	18.18%
Manufacturing	0	0.00%	0	0.00%
Construction	15	30.00%	0	0.00%
Transportation. & Utilities	10	20.00%	0	0.00%
Retail and Wholesale	0	0.00%	0	0.00%
Finance	0	0.00%	10	18.18%
Business & Community Services	0	0.00%	25	45.45%
Public Administration	0	0.00%	15	27.27%
Total All Industries	50	100.00%	55	100.00%

Source: Statistics Canada 1996 & 2001 Census (numbers may not add up due to rounding)

Halkirk Labour Force By Industry - 2001



Labour Force by Major Occupational Groups	1996	%	2001	%
Management occupations	0	0.00%	0	0.00%
Business, Finances and administrative occupations	0	0.00%	0	0.00%
Natural and applied sciences and related occupations	0	0.00%	0	0.00%
Health occupations	0	0.00%	0	0.00%
Occupations in social science; education; government and religion	0	0.00%	0	0.00%
Occupations in art; culture; recreation and sport	0	0.00%	0	0.00%

Sales and service occupations	15	30.00%	15	27.27%
Trades; transport; equipment operators and related occupations	25	50.00%	25	45.45%
Occupations unique to primary industry	15	30.00%	0	0.00%
Occupations unique to processing; manufacturing and utilities	0	0.00%	0	0.00%
Occupations not elsewhere classified	0	0.00%	0	0.00%
Total - All Occupations (major groups)	50	100.00%	55	100.00%
Females - All Occupations	15	30.00%	25	45.45%
Males - All Occupations	35	70.00%	25	45.45%

Source: Statistics Canada 1996 & 2001 Census (numbers may not add up due to rounding)

Dwellings

Occupied Private Dwellings by Type	1996	% of total	2001	% of total
Apartments	0	0.00%	0	0.00%
Detached Duplexes	0	0.00%	0	0.00%
Movable Dwellings	0	0.00%	15	27.27%
Other single attached house	0	0.00%	0	0.00%
Row and semi-detached house	0	0.00%	0	0.00%
Single-detached house	60	100.00%	45	81.82%
Total number of occupied private dwellings	60	100.00%	55	100.00%
Private dwellings, owned	50	83.33%	60	109.09%
Private Dwellings, rented	10	16.67%	0	0.00%

Source: Statistics Canada 1996 & 2001 Census (numbers may not add up due to rounding)

Private Dwellings by Period of Construction	# of Dwellings	% of total
Period of construction, before 1946	10	15.38%
Period of construction, 1946 - 1960	25	38.46%
Period of construction, 1961 - 1970	0	0.00%
Period of construction, 1971 - 1980	10	15.38%
Period of construction, 1981 - 1990	10	15.38%
Period of construction, 1991 - 2001	10	15.38%
Total number of private dwellings constructed	65	100.00%

Source: Statistics Canada 2001 Census (numbers may not add up due to rounding)

Disclaimer: Information in this profile has been provided from a variety of external sources. Although every effort has been made to ensure the accuracy, currency and reliability of the content and data, AlbertaFirst.com Ltd. accepts no responsibility in this regard.

© AlbertaFirst.com Ltd., 2006.