

Arrowwood

www.villageofarrowwood.ca

Welcome

Welcome.

The Village of Arrowwood has a population of just under 200 and we have been working very hard to beautify our village and make it a place where visitors feel welcome.

The Village has received honors since 2003 in the national community beautification program called Communities in Bloom. Our recognition has been for community involvement in the project and in 2005, for the wetland enhancement project.

Arrowwood is home to a number of tourist attractions and we offer places to shop, eat and camp. Take a look at our web site for more detailed information.



Welcome

Area Overview

The Village of Arrowwood, surrounded by choice farmland, lies between the east and west Arrowwood Creeks with the Bow River 3 miles north and the Buffalo Hills to the south. This area, with an abundance of good water and many thousands of acres of good grass, was utilized by many of the early ranchers.

Local history states that the name, Arrowwood, was taken from the Blackfoot Indian words "Mista Katpiskoo", which means Wood Village. Arrowwood was incorporated as a Village in 1926.

Community Services

[Vulcan Adult Learning Council](#)

[Family and Community Support Services](#)

Community Lifestyle

CHURCHES

Gospel Mission Church
United Church

ORGANIZATIONS

Lions Club
Royal Canadian Legion (Gleichen)
Arrowwood Restoration Society
New Horizons Seniors Club
4 H Clubs
Arrowwood Rifle and Pistol Club

RECREATION

Playground
Soccer
Slo-Pitch
Hockey - Vulcan or Gleichen
Curling - Gleichen, Milo or Vulcan
Skating - natural ice

Mary Block Library
A member of the [Chinook Arch Library System](#)

Economic Base

Arrowwood is an agriculture and oil and gas based community, as well as having a variety of retail and service industries.

Economic Facts

AGRICULTURE SERVICES

Air Alta Applicators
B & B Ag Service
Hubert's Irrigation Service

OIL AND GAS SERVICES

B & B Oilfield Hauling and Tank Service
Hurricane Management

BANK

Bank of Nova Scotia

RETAIL

Arrowwood Coop Association
Buffalo Hills Art Gallery
Granny Penny's Workshop
Karen's Korner
Oakes House
Walker's Country N' Western Store
Sears

SERVICES

Canada Post
Centre Street Eatery
Don Kuntz Welding and Car Wash
Graffix Computer Solutions
Milo Freight Systems
Pete's Barber Shop
You-Nique Salon

Education

Arrowwood Community School has students from grades 1 - 9. Upon graduation, students are then bussed to County Central High School.

Both schools belong to the [Palliser School Division](#).

Emergency Services

Emergencies 911

Arrowwood has a volunteer fire department which is a member of the Northwest Fire Association.

The RCMP patrols out of the Gleichen detachment.

Health Care

Vulcan Health Center, which lies within the [Calgary Health Region](#), is an 8 bed active facility with 15 long care beds, D level radiology, fully equipped modern lab and a modern emergency area. The Hospital also has an occupational therapist, mental health worker, social worker and palliative care.

Health services also include a dentist, chiropractor, optometrist, podiatrist, hearing aid service and Public Health Unit.

Hospitals are also located in Strathmore and High River.

Key Contacts for Business Development

Provincial:

Honourable Barry McFarland
Member of the Legislative Assembly (MLA)
Little Bow Constituency
#410 Legislature Building
10800 - 97 Avenue
Edmonton AB
T5K 2B6
Tel: 780-427-0879
Fax: 780-422-0351

Constituency Office
P.O. Box 231
111 Carman Street
Carmangay AB
T0L 0N0
Tel: 403-643-2077
Toll Free: 1-800-563-0917
Fax: 403-643-2024

Federal:

Ted Menzies
Macleod Constituency
Member of Parliament (MP)
House of Commons
Ottawa, Ontario
K1A 0A6
Tel: 613-995-8471
Fax: 613 996-9770

Constituency Office:

4925 1st Street West
Claresholm, Alberta
T0L 0T0

Tel: 403-625-5532
Toll Free: 1-866-636-9437

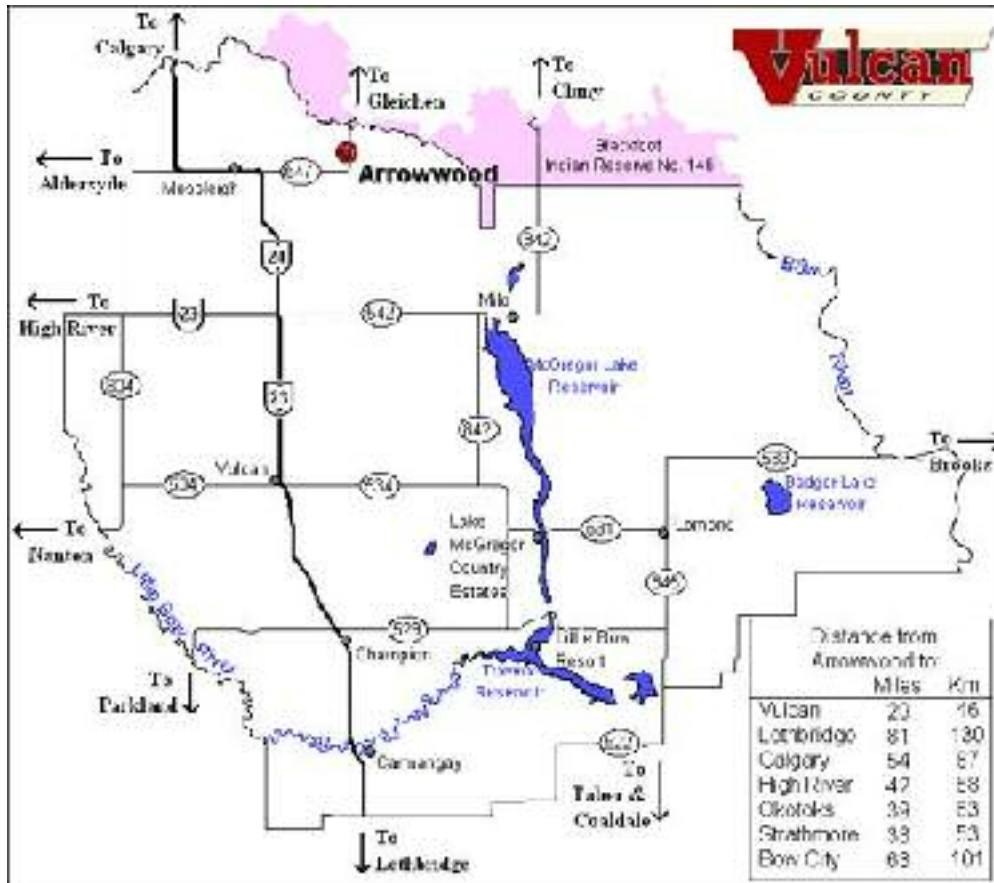
MUNICIPAL:

Village of Arrowwood
Box 36
Arrowwood Ab. TOL 0B0
403-534-3821

Vulcan Business Development Society
Box 360
Vulcan Ab TOL 2B0
403-485-4100
Email

Location

Arrowwood is situated about 60 km (37 miles) northeast of Vulcan on Highway 24. The village is 3 km (2 miles) south of the irrigation canal that supplies water to Lake MacGregor and the Travers reservoir.



Arrowwood is central to many locations.

Post Secondary Education

The University of Calgary, Mount Royal College and Southern Alberta Institute of Technology are located in Calgary which is 87 km (54 miles) from Arrowwood.

The [University of Lethbridge](#) and [Lethbridge Community College](#) are located in Lethbridge which is 130 km (81 miles) from Arrowwood.

Taxation

Mill Rates

Residential 10.902

Commercial 12.941

Utilities

WATER AND SEWER

Contact the Village Office 403-534-3821

ELECTRICITY

[Epcor](#)

NATURAL GAS

[Sunshine Gas Coop Ltd](#)

TELEPHONE

[Telus](#)

INTERNET

[Telus](#)

[Wild Rose Internet](#)

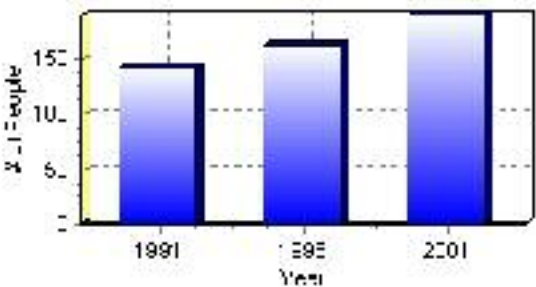
Population

Total Population

Population 2004*	190
Population 2003*	190
Population 2002*	190
Population 2001**	195
Population 2000*	176
Population 1996**	163
Population 1991**	142
Population % change 1991-1996	12.88%
Population % change 1996-2001	14.21%

* Source: Official Population List, Alberta Municipal Affairs
** Source: Statistics Canada 1991, 1996, & 2001 Census

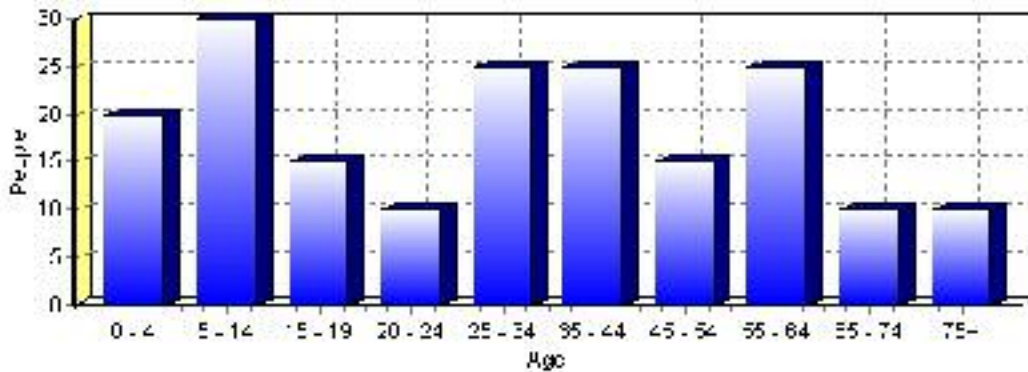
Total Population 1991-2001



Population by Age and Gender	1996 Male	1996 Female	1996 Total	2001 Male	2001 Female	2001 Total
Age 0 - 4	5	5	10	10	10	20
Age 5 - 14	10	10	20	15	15	30
Age 15 - 19	5	0	5	10	5	15
Age 20 - 24	10	5	15	5	5	10
Age 25 - 34	10	10	20	10	15	25
Age 35 - 44	10	5	15	10	15	25
Age 45 - 54	5	10	15	5	10	15
Age 55 - 64	15	10	25	10	15	25
Age 65 - 74	10	15	25	10	0	10
Age 75 and older	5	15	20	5	5	10
Total All Persons	80	80	160	90	105	195

Source: Statistics Canada 1996 & 2001 Census (numbers may not add up due to rounding)

Arrowwood Population by Age Group (2001)

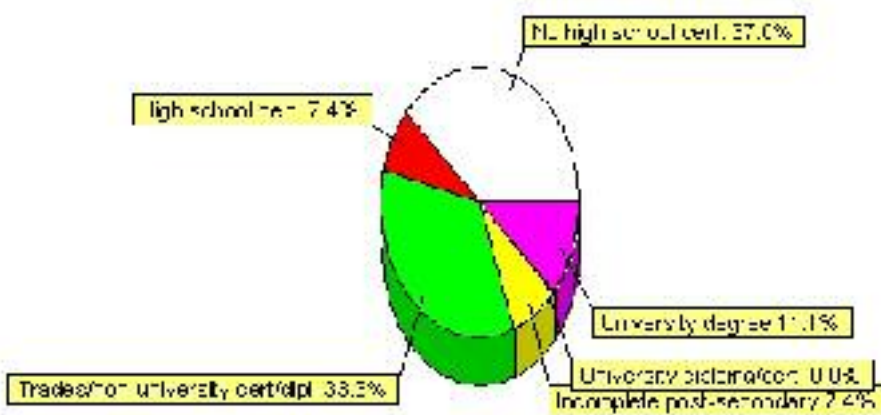


Education Statistics

Highest level of schooling for Population 20yrs and older	2001	%
People without high school certificates	50	37.04%
People with high school certificates	10	7.41%
People with trades or non-university certificate or diploma	45	33.33%
People with post-secondary education (not completed)	10	7.41%
People with university diploma/certificate	0	0.00%
People with university degree	15	11.11%
Total Population 20 years and older	135	100.00%

Source: Statistics Canada 2001 Census (numbers may not add up due to rounding)

Arrowwood Highest Level of Schooling 2001



Population with Post Secondary Qualifications	1996	%	2001	%
Agriculture and biological sciences	10	25.00%	0	0.00%
Commerce, management and business administration	0	0.00%	0	0.00%
Educational, recreational and counseling services	0	0.00%	10	16.67%
Engineering and applied science tech. and trades	20	50.00%	15	25.00%
Engineering and applied sciences	0	0.00%	10	16.67%
Fine and applied arts	10	25.00%	0	0.00%
Health professionals, science and technologies	0	0.00%	0	0.00%
Humanities and related fields	0	0.00%	0	0.00%
Mathematics and physical sciences	0	0.00%	0	0.00%
Social sciences and related fields	0	0.00%	0	0.00%
Other and/or no specialization	0	0.00%	0	0.00%
Total people with post secondary qualifications	40	100.00%	60	100.00%
Females with post-secondary qualifications	15	37.50%	30	50.00%
Males with post-secondary qualifications	25	62.50%	30	50.00%

Source: Statistics Canada 1996 & 2001 Census (numbers may not add up due to rounding)

Labour Force

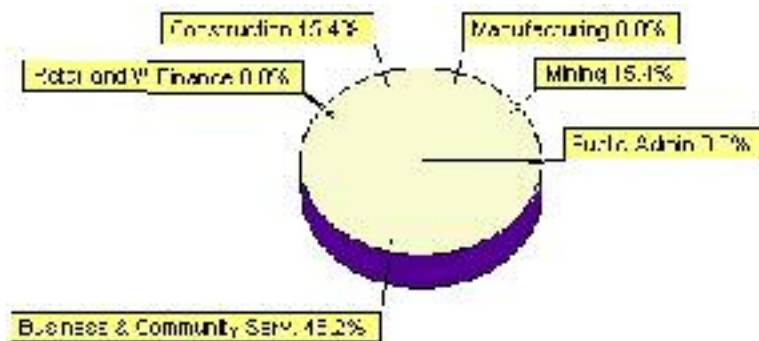
Labour force by activity	1996	2001
In the labour force, both sexes	70	65
Not in the labour force, both sexes	45	75
Total population 15 and over	115	140
Employed, both sexes	70	70
Unemployed, both sexes	0	0
Participation rate, both sexes	60.00%	46.00%
Unemployment rate, both sexes	0.00%	0.00%

Source: Statistics Canada 1996 & 2001 Census (numbers may not add up due to rounding)

Labour Force by Industry Division	1996	% of total	2001	% of total
Agriculture	15	21.43%	0	0.00%
Mining	0	0.00%	10	15.38%
Manufacturing	0	0.00%	0	0.00%
Construction	0	0.00%	10	15.38%
Transportation. & Utilities	10	14.29%	0	0.00%
Retail and Wholesale	0	0.00%	0	0.00%
Finance	15	21.43%	0	0.00%
Business & Community Services	10	14.29%	30	46.15%
Public Administration	10	14.29%	0	0.00%
Total All Industries	70	100.00%	65	100.00%

Source: Statistics Canada 1996 & 2001 Census (numbers may not add up due to rounding)

Arrowwood Labour Force By Industry - 2001



Labour Force by Major Occupational Groups	1996	%	2001	%
Management occupations	0	0.00%	0	0.00%
Business, Finances and administrative occupations	10	13.33%	10	15.38%
Natural and applied sciences and related occupations	0	0.00%	0	0.00%
Health occupations	0	0.00%	0	0.00%
Occupations in social science; education; government and religion	0	0.00%	0	0.00%
Occupations in art; culture; recreation and sport	0	0.00%	0	0.00%

Sales and service occupations	25	33.33%	15	23.08%
Trades; transport; equipment operators and related occupations	0	0.00%	25	38.46%
Occupations unique to primary industry	15	20.00%	0	0.00%
Occupations unique to processing; manufacturing and utilities	10	13.33%	0	0.00%
Occupations not elsewhere classified	0	0.00%	0	0.00%
Total - All Occupations (major groups)	75	100.00%	65	100.00%
Females - All Occupations	35	46.67%	15	23.08%
Males - All Occupations	40	53.33%	50	76.92%

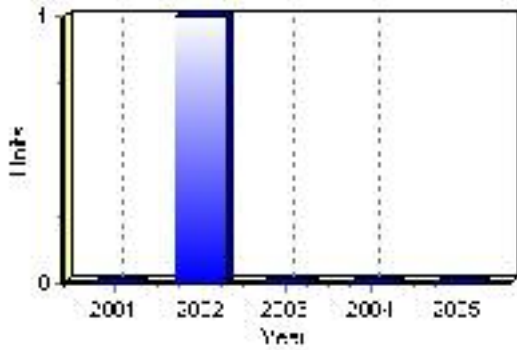
Source: Statistics Canada 1996 & 2001 Census (numbers may not add up due to rounding)

Building Permits

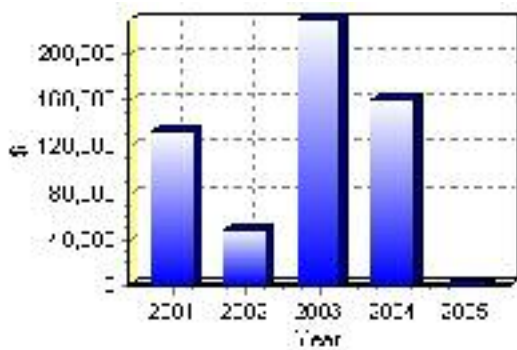
Total Building Permit Values	2001	2002	2003	2004	2005
Building Permits Value, Commercial	\$120,000	\$1,000	\$30,000	\$118,000	\$0
Building Permits Value, Industrial	\$0	\$0	\$0	\$0	\$0
Building Permits Value, Institutional	\$0	\$0	\$0	\$5,000	\$0
Building Permits Value, Residential	\$13,000	\$47,000	\$199,000	\$37,000	\$0
Building Permits Value, Total	\$133,000	\$48,000	\$229,000	\$160,000	\$0
Total Housing Starts	0	1	0	0	0

Source: Statistics Canada 2000-2004 Building Permits (numbers may not add up due to rounding)

Total Housing Starts



Value of Building Permits



Dwellings

Occupied Private Dwellings by Type	1996	% of total	2001	% of total
Apartments	0	0.00%	0	0.00%
Detached Duplexes	0	0.00%	0	0.00%
Movable Dwellings	0	0.00%	0	0.00%
Other single attached house	0	0.00%	0	0.00%
Row and semi-detached house	0	0.00%	0	0.00%
Single-detached house	55	91.67%	70	93.33%
Total number of occupied private dwellings	60	100.00%	75	100.00%
Private dwellings, owned	55	91.67%	55	73.33%
Private Dwellings, rented	10	16.67%	20	26.67%

Source: Statistics Canada 1996 & 2001 Census (numbers may not add up due to rounding)

Private Dwellings by Period of Construction	# of Dwellings	% of total
Period of construction, before 1946	40	80.00%
Period of construction, 1946 - 1960	10	20.00%
Period of construction, 1961 - 1970	0	0.00%
Period of construction, 1971 - 1980	0	0.00%
Period of construction, 1981 - 1990	0	0.00%
Period of construction, 1991 - 2001	0	0.00%
Total number of private dwellings constructed	50	100.00%

Source: Statistics Canada 2001 Census (numbers may not add up due to rounding)

Disclaimer: Information in this profile has been provided from a variety of external sources. Although every effort has been made to ensure the accuracy, currency and reliability of the content and data, AlbertaFirst.com Ltd. accepts no responsibility in this regard.

© AlbertaFirst.com Ltd., 2006.