

Barrhead

www.barrhead.ca

Welcome

Welcome to Beautiful, Bountiful Barrhead...It's big enough to share with everyone. Our community is located in one of the best agricultural areas in Alberta, surrounded by the oil, gas and forestry industries. We also have a prosperous manufacturing sector. The community provides a quality of life that offers something for everyone in an environment full of beautiful lakes, scenic byways and special events.

Welcome to our community. We hope the information contained within this profile is useful. We encourage you to visit our website at www.barrhead.ca to obtain additional information about Barrhead. You may also contact our Town office at (780)674-3301 or any representative from the "Key Contacts" section.

Area Overview

The Town of Barrhead was named after Barrhead, Scotland, the birthplace of James McGuire, one of the area's earliest settlers. Moved from its original townsite in 1912 to meet the expanding railway lines, Barrhead has continued to grow and prosper at its present location. Today, Barrhead has grown to a community of approximately 4,200 people.

The Town of Barrhead is part of the historic Klondike Trail and is the centre of one of Alberta's richest agricultural and forestry areas. Oil and gas, manufacturing, and the retail trades make up the balance of the economy of the town.

There is ample camping, golfing, swimming, boating, water skiing, fishing and hiking in the area. Barrhead also offers a terrific array of shopping outlets and restaurants to appeal to the most discriminating shopper. It offers a progressive range of community services while retaining its small town charm.

For more complete information about the advantages of life in Barrhead, please visit our website at <http://www.albertafirst.com/www.barrhead.ca>

Climate

Barrhead enjoys a full four seasons. The approximate hours of sunshine per year totals 2264 hours. The annual precipitation is estimated to be 52 cm of rain and 47 cm of snow.

Community Services

Municipal

Barrhead Town Office

5014 - 50 Avenue

Box 4189

Barrhead, Alberta

T7N 1A2

Tel: 780-674-3301

Fax: 780-674-5648

<mailto:town@barrhead.ca>

<http://www.barrhead.ca/>

Barrhead Public Library
5304 - 49 Street
Barrhead, Alberta
T7N 1N5
Tel: 780- 674-8519

Town of Barrhead Recreation, Parks and Tourism
5607-47 Street
Box 4112
Barrhead, Alberta
T7N 1A1
Tel: 780-674-2532
Fax: 780-674-2554
<mailto:town@barrhead.ca>

Provincial

- AADAC
- Agriculture, Food and Rural Development
- Alberta Agriculture Development Corporation
- Alberta Distance Learning Centre
- Alberta Hail and Crop Insurance
- Attorney General - Provincial Court
- Family and Community Support Services
- Barrhead Regional Employment Centre
- Aspen Health Services
- Family and Social Services
- Forestry, Lands and Wildlife
- Mental Health Clinic
- Medical Examiner-Coroner
- Public Works, Supply and Services
- Transportation and Utilities
- Recreation and Parks (Thunder Lake Park)

Federal

- Farm Credit Corporation
- Canada Post
- Royal Canadian Mounted Police

Community Lifestyle

Recreation

Barrhead has a wide variety of recreational facilities, including the Barrhead Arena, Barrhead Sportsground (ball diamonds, rodeo grounds, tennis courts, RV park area), Kinsmen Aquatic Centre (pool, sauna and whirlpool), Barrhead Curling Rink, Blue Heron Bowling Alley, Rotary Park (camping), and the Paddle River and Barrhead Golf Courses. There are 8 playgrounds and numerous

other green areas throughout the town.

Thunder Lake Park is located west of town, and offers fishing, boating, swimming, 127 camp sites, group camping, boat rentals, boat launch, mooring, sandy beaches, campers beach, playgrounds, activity programs, farmer's market, sewage dumping station, Park Ranger security, cross-country ski trails and winter camping. Other camping facilities are available at the Killdeer Beach Resort, Peanut Lake, and Elks Beach.

The Misty Ridge Ski Hill provides opportunities for skiing and snowboarding in the winter. There is also the Homesteaders' Walking Trail, which goes from Barrhead along the Paddle River to the Barrhead Golf and Recreation Area.

Both the Town and County of Barrhead offer programs for a wide range of recreational pursuits, including hockey, figure skating, cross-country skiing, snowshoeing, luge, tennis, ball hockey, swimming, aerobics, fitness, tai chi, yoga, ballet, jazz, tap, archery, shooting, hunting, water skiing, sailing, sail boarding and bird-watching. For more information on the Town of Barrhead's recreational programs, please contact Cindy Bowie at (780)674-2532.

Within the FCSS Building, there are a wide range of sports and activities to meet the needs of those wishing to participate in individual activities such as dancing, judo, boxing, workshops, board meetings and youth groups. Their modern complex is situated in Downtown Barrhead. For more information, please contact Carol Lee at (780)674-3341.

Community Organizations

- Barrhead & District Agricultural Society
- Barrhead & District Chamber of Commerce
- Barrhead Grizzly Trail Fire and Rescue Association
- Barrhead Elks Club
- Barrhead Light Horse Association
- Barrhead Kinsmen Club
- Barrhead Senior Versatiles
- Barrhead Twinning Society (with Tokoro, Japan and Drouin, Australia)
- Country Opry Association
- Girl Guides of Canada
- Lazy Dazy Light Horse Club
- Lions and Lioness Clubs of Barrhead
- Madrigal Singing Group
- Meals on Wheels
- Order of Royal Purple Ladies
- Rejoicing Voices
- Rotary Club of Barrhead
- Royal Canadian Air Cadets
- Royal Canadian Legion No.75
- Scout Group Cubs and Beavers
- Wildrose Rodeo Association

Recreation and special interest clubs include the Barrhead Archery Club, Barrhead Art Club, Barrhead Arts Council, Barrhead Centennial Museum Society, Barrhead Gem Seekers, Barrhead Judo Club, Barrhead Tai Chi, Barrhead Boxing Club, Blue Heron Bowl, and the Town and Country Art Club.

Religious Services

Barrhead has 12 churches, serving a wide range of denominations.

Special Annual Events/Attractions

The town also has a number of active arts groups. The Barrhead Arts Council brings national and international entertainment at least 5 times a year to Barrhead, while the Barrhead Community Theatre also offers a number of productions throughout the year. Other groups include the Barrhead Art Club, Potters Guild, Spinners and Weavers and Gem Seekers.

- Figure Skating Carnival -- March
- Volunteer Appreciation Activities -- April
- Antique Car Run -- May
- Terry Fox Run -- May
- Blue Heron Street Festival -- June
- Soap Box Derby -- June
- Toxic Round Up -- June
- Canada Day Celebrations -- July 1
- Summer Programs -- July & August
- Blue Heron Fair Days -- August
- Wildrose Rodeo Finals -- September
- Christmas Light-Up -- November
- Christmas Parade -- December
- New Year's Eve Activities -- December 31

Hospitality

Accommodations

Barrhead Neighbourhood Inn...(780)674-3300 or 1-800-216-7210

Barrhead Red Baron Inn...(780)674-2336

Dallas Hotel...(780)674-2444

Sunset Cove Motel...(780)674-4400

Intown campground accommodations are located at the south entrance of town on Highway 33, at the Rotary Park. For more information call the Recreation Department at (780)674-2532 or the Town Office at (780)674-3301.

Restaurants

- A&W
- Barrhead & District Coop Cafeteria
- Barrhead Golf & Recreation Area Cafeteria
- Barrhead Pizza & Spaghetti House
- Cornerstone Cafe located in the Barrhead Red Baron Inn
- Dallas Hotel
- DJ's Dairy and Burgers
- Frank's Steakhouse and Pizza
- Garden Court Cafe located in the Barrhead Neighborhood Inn
- Hong Kong Restaurant
- IGA Meeting Place
- JB Submarine
- KFC
- Paddle River Golf Course Cafeteria

- Pepper's Family Restaurant
- Prairie Chef Restaurant
- Ramzi's
- Reid's Kitchen
- Spring Sun Restaurant
- Subway Soups and Sandwiches
- The Buttercup
- Two for One Pizza

Economic Base

Agriculture is the mainstay of the local economy -- diversification is prevalent, with numerous mixed farming enterprises including grain, peas, hogs, beef, dairy, poultry, elk, sheep, goats, ostrich, rhea, purebred cattle, purebred hogs, alpaca and seed growers. Diversification has expanded to ventures in market gardens, greenhouse vegetables, field vegetables, rhubarb, spice growing, garden nurseries and tree nurseries.

Other economic bases include lumber, oil and gas, manufacturing and retail trades.

Economic Facts

Major manufactured products in the Barrhead area include lumber, animal feeds, souvenir wood products (hockey sticks, baseball bats), machining, trophies, cabinetry and frames, wooden windows, furniture, concrete, fabricated steel buildings, signs, meat products, flour, oats, barley, honey, hot house vegetables, custom cowboy boots, pottery and lottery ticket printing.

Major Businesses Products/Services

Champion Feed Service Ltd. - Processes animal feed and pet food.

Pollard Banknote - Generates lottery tickets.

Agricore - Fertilizer, grain sales and service, chemicals and herbicides.

Westglen Milling - Barley and oat processing.

Breal Metal Buildings & Industrial Insulation Ltd. - Metal buildings and industrial insulation.

Barrhead Plastics - Produces plastic containers and products.

Barrhead Custom Meat Packers - Meat and meat products.

Adelman Cabinets & Millwork Ltd. - Furniture, cabinets and millwork.

Sepallo Industries - Processes health food supplement ingredients.

Financial Institutions

Bank of Nova Scotia...(780)674-8400

Toronto Dominion Bank...(780)674-2216

Barrhead Savings & Credit Union...(780)674-3345

Alberta Treasury Branch...(780)674-2243

Education

Barrhead is a part of the Pembina Hills Regional School Division #7, headquartered in Barrhead. (Telephone: 780-674-8500).

Daycare/Nursery

Barrhead Family Day Homes
Children's World Daycare

Public

Public schools located within the Town of Barrhead include Barrhead Elementary School (K-6) and Barrhead Composite High School (7-12).

Other schools include Dunstable School (K-6), and Meadowview School (K-6). Also, Neerlandia School, located in Neerlandia, is a publicly funded school with a philosophy based on biblical principles.

The school offers education from Grades K-12.

Separate

N/A

Private

The Canadian Reformed School is located in the County of Barrhead near Neerlandia.

Emergency Services

Fire Protection/Emergency Response Services

Through a Fire Authority Board the municipalities of the Town and County of Barrhead provide Fire & Rescue services to a 1538 sq. km region, (956 sq. mi.). With 3 pumper trucks, 1 tanker truck, 1 rescue truck, 1 rapid response mini pumper and an aerial truck. Our well-trained, 32 member volunteer fire department is equipped for all emergencies, under the direction of our full-time Fire Chief.

Tel: 780-674-2311 and <mailto:town@barrhead.ca>

The Fire Authority also provides public education and fire prevention programming, inspections and investigations.

Ambulance Services

The Barrhead Ambulance Service has 2 modern ambulances, and provides basic and advanced emergency life support. (Tel: 780-674-3140).

Police Services

Barrhead is served by a local detachment of the Royal Canadian Mounted Police (RCMP) (Tel: 780-674-2696).

Health Care

Barrhead Health Care Centre has 35 active treatment beds and offers a wide range of services from obstetrics, surgery, general medicine, auxiliary care, emergency, x-ray, rehabilitation, physiotherapy, dietetic counselling and education programs.

Aspen Regional Health serves the Barrhead area, and provides services in the following departments: dental, environmental health, family health services, health promotion, home care, medical officer of health, nutrition and speech and language.

Other medical services include 2 medical clinics staffed with 12 physicians, an optometry clinic, orthodontist clinic, 3 dental clinics staffed with 3 dentists, a physiotherapy clinic, dental laboratory, medical laboratory, massage therapist, chiropractor and psychologist.

The Keir Care Centre is a 100-bed extended care facility offering individualized care programs for seniors.

Senior Living Facilities

There are two lodge accommodation facilities for seniors. The Hillcrest contains 91 rooms and Klondike Place contains 40 suites. Residents of the lodges are encouraged to maintain their personal wellness and independence.

There is also three self contained manors which offer independant senior living. Pembina Court has 24 self contained units. Jubilee Manor is a self contained facility and contains 16 units and Golden Crest has 32 apartments. Both Jubilee Manor and Golden Crest are connected to the Hillcrest and Klondike Place lodges by pedways.

Key Contacts for Business Development

Municipal

Town of Barrhead
5014 - 50 Avenue
Box 4189
Barrhead, Alberta
T7N 1A2
Tel: 780-674-3301
Fax: 780-674-5648
<mailto:town@barrhead.ca>
<http://www.barrhead.ca/>

Brian Schulz
Mayor

Brad Watson
Municipal Manager

Barrhead & District Chamber of Commerce
Box 4524
Barrhead, Alberta
T7N 1A4
Tel: 780-674-8040

Provincial (Updated December 2004)

David Pattison
Director, Edmonton
Region Regional Development Branch
Alberta Economic Development
5th Floor, Commerce Place
10155 - 102 Street
Edmonton, AB T5J 4L6
Tel: 780-427-6648
Fax: 780-422-5804
Email:david.pattison@gov.ab.ca
(updated May 10, 2004)
Jan Couper, Client Services Representative
Tel: 780-427-6291
Email:jan.couper@gov.ab.ca

Kenneth Kowalski

Member of the Legislative Assembly (MLA)
Barrhead-Westlock Constituency
513 Legislature Building
10800 - 97 Avenue
Edmonton, Alberta
T5K 2B6
Tel: 780-427-4557
Fax: 780-427-1835

Constituency Office:
5110 - 50 Avenue, Box 4576
Barrhead, Alberta
T7N 1A4
Tel: 780-674-3225
Fax: 780-674-6183

Federal (Updated May 2001)

Robert Merrifield
Member of Parliament (MP)
Yellowhead Constituency
House of Commons
Ottawa, Ontario
K1A 0A6
Tel: 613-992-1653
Fax: 613-992-3459

Constituency Office:
Box 7887
Edson, Alberta
T7E 1V9
Tel: 780-723-6068 or 1-800-268-7117
Fax: 780-723-5060

Yellowhead East Business Development Centre
Sangudo, Alberta
Tel: 780-785-2900

Location

The Town of Barrhead is centrally located within the County of Barrhead #11, in north-central Alberta (Midnight Twilight Country). It is 122 km northwest of Edmonton following Highway 33, and ideally situated on a major provincial corridor at the junction of Highways 33 and 18. Highway 33...named the Grizzly Trail...is the shortest route to Peace River Country.

Post Secondary Education

Barrhead is within commuting distance of Edmonton. Edmonton provides us with post-secondary institutions such as the University of Alberta, Northern Alberta Institute of Technology (NAIT) and Grant McEwan College. Satellite campuses in Barrhead exist for Alberta Vocational College, NAIT and Grant McEwan College.

Taxation

	<u>Residential/</u>	<u>Non-Residential</u>
2005		
Municipal Tax Rate	11.2570	14.2130
Barrhead Public Library	.1939	.1939
Education - Alberta School Foundation Fund Tax Rate	4.7163	7.0475
Allowance for Non-Collection of Requisitioned Taxes	.1070	.1070
Total	16.2742	21.5614

Transportation

Air Services

Johnson Industrial Airport, located 6 km southwest from town, has a 3,500 foot runway and all-weather facilities.

Highways

Highway 33 connects with Edmonton via Highway 16 and 43, and also Swan Hills to the northwest. Highway 33 is the shortest route to Peace River Country. In addition, Highway 18 connects with Westlock to the east and also Thunder Lake Park to the west of Barrhead.

Trucking Firms

Trucking firms that service Barrhead include Barrhead Truck (2001) Ltd., Gar-Lyn Trucking Ltd., Graydon Trucking Ltd., Hillman Bros. Transport, J & K Trucking Enterprises Ltd., Ochremchuk (John) Trucking, Neerlandia Transport Ltd., Schmidt Livestock Ltd. and Strawson Backhoe & Trucking.

Bus Services

Greyhound Bus Lines offers regularly scheduled inter-community service.

Couriers and Taxis

Greyhound Express Courier, Priority Courier, Fed EX, DHL Courier and Purolator Couriers service Barrhead. The local taxi service is Barrhead Cabs.

There is also the Klondike Ferry Crossing, a cabled ferry crossing the Athabasca River.

Utilities

Electrical Power

Fortis Alberta
Telephone: 310-9473

Natural Gas

AltaGas Alberta Inc.
Telephone: 1-866-222-2067

Telephone

Telus

Telephone: 310-2255

Water Supply

The water supply is administered by the Town of Barrhead.

Waste Management

Sewage treatment is provided by 3 aeriated ponds, 1 polishing pond and 2 storage ponds. Barrhead has weekly pick-up for garbage. Trade waste is picked up daily or weekly as required. Corrugated cardboard is picked up on a regular basis for delivery to the recycling depot.

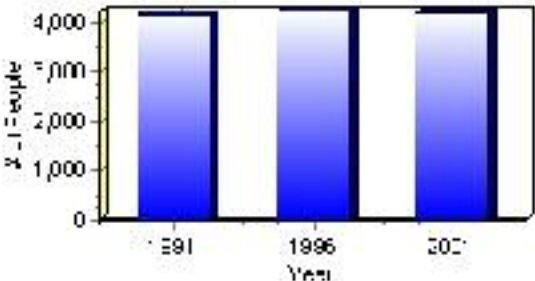
Population

Total Population

Population 2004*	4,213
Population 2003*	4,213
Population 2002*	4,213
Population 2001**	4,215
Population 2000*	4,239
Population 1996**	4,239
Population 1991**	4,160
Population % change 1991-1996	1.86%
Population % change 1996-2001	-0.62%

* Source: Official Population List, Alberta Municipal Affairs
** Source: Statistics Canada 1991, 1996, & 2001 Census

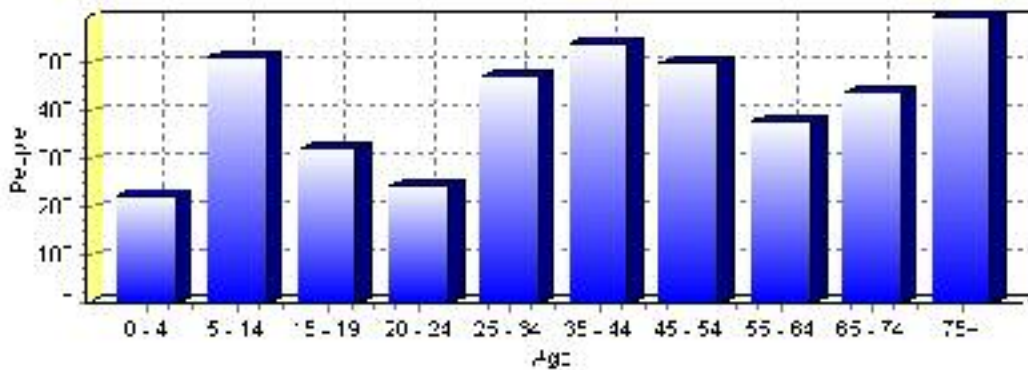
Total Population 1991-2001



Population by Age and Gender	1996 Male	1996 Female	1996 Total	2001 Male	2001 Female	2001 Total
Age 0 - 4	120	140	260	115	110	225
Age 5 - 14	325	275	600	240	270	510
Age 15 - 19	140	160	300	170	150	320
Age 20 - 24	100	135	235	120	125	245
Age 25 - 34	270	280	550	230	240	470
Age 35 - 44	270	285	555	255	285	540
Age 45 - 54	205	215	420	240	260	500
Age 55 - 64	155	185	340	185	195	380
Age 65 - 74	210	255	465	180	255	435
Age 75 and older	195	310	505	240	355	595
Total All Persons	1,985	2,250	4,235	1,970	2,240	4,210

Source: Statistics Canada 1996 & 2001 Census (numbers may not add up due to rounding)

Barrhead Population by Age Group (2001)

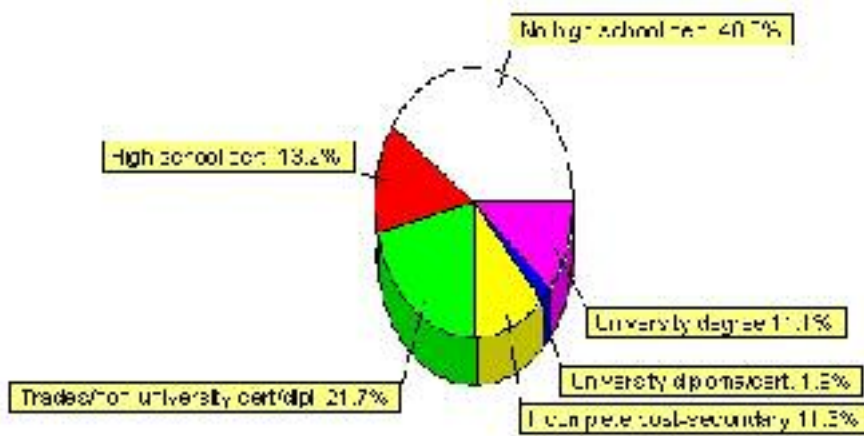


Education Statistics

Highest level of schooling for Population 20yrs and older	2001	%
People without high school certificates	1,160	40.35%
People with high school certificates	380	13.22%
People with trades or non-university certificate or diploma	625	21.74%
People with post-secondary education (not completed)	325	11.30%
People with university diploma/certificate	55	1.91%
People with university degree	320	11.13%
Total Population 20 years and older	2,875	100.00%

Source: Statistics Canada 2001 Census (numbers may not add up due to rounding)

Barrhead Highest Level of Schooling 2001



Population with Post Secondary Qualifications	1996	%	2001	%
Agriculture and biological sciences	100	8.70%	95	9.45%
Commerce, management and business administration	180	15.65%	125	12.44%
Educational, recreational and counseling services	245	21.30%	190	18.91%
Engineering and applied science tech. and trades	330	28.70%	255	25.37%
Engineering and applied sciences	20	1.74%	20	1.99%
Fine and applied arts	35	3.04%	55	5.47%
Health professionals, science and technologies	125	10.87%	180	17.91%
Humanities and related fields	60	5.22%	40	3.98%
Mathematics and physical sciences	0	0.00%	20	1.99%
Social sciences and related fields	35	3.04%	30	2.99%
Other and/or no specialization	10	0.87%	0	0.00%
Total people with post secondary qualifications	1,150	100.00%	1,005	100.00%
Females with post-secondary qualifications	540	46.96%	510	50.75%
Males with post-secondary qualifications	610	53.04%	495	49.25%

Source: Statistics Canada 1996 & 2001 Census (numbers may not add up due to rounding)

Labour Force

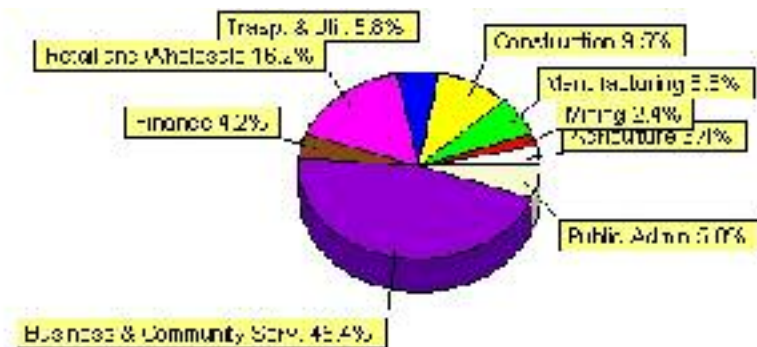
Labour force by activity	1996	2001
In the labour force, both sexes	1,935	1,895
Not in the labour force, both sexes	1,205	1,290
Total population 15 and over	3,140	3,185
Employed, both sexes	1,795	1,780
Unemployed, both sexes	140	120
Participation rate, both sexes	62.00%	60.00%
Unemployment rate, both sexes	7.00%	6.00%

Source: Statistics Canada 1996 & 2001 Census (numbers may not add up due to rounding)

Labour Force by Industry Division	1996	% of total	2001	% of total
Agriculture	75	3.96%	65	3.45%
Mining	50	2.64%	45	2.39%
Manufacturing	150	7.92%	125	6.63%
Construction	120	6.33%	180	9.55%
Transportation. & Utilities	80	4.22%	110	5.84%
Retail and Wholesale	350	18.47%	305	16.18%
Finance	100	5.28%	80	4.24%
Business & Community Services	810	42.74%	855	45.36%
Public Administration	120	6.33%	110	5.84%
Total All Industries	1,895	100.00%	1,885	100.00%

Source: Statistics Canada 1996 & 2001 Census (numbers may not add up due to rounding)

Barrhead Labour Force By Industry - 2001



Labour Force by Major Occupational Groups	1996	%	2001	%
Management occupations	245	12.89%	175	9.28%
Business, Finances and administrative occupations	215	11.32%	310	16.45%
Natural and applied sciences and related occupations	70	3.68%	90	4.77%
Health occupations	125	6.58%	130	6.90%
Occupations in social science; education; government and religion	155	8.16%	160	8.49%
Occupations in art; culture; recreation and sport	55	2.89%	50	2.65%

Sales and service occupations	550	28.95%	465	24.67%
Trades; transport; equipment operators and related occupations	305	16.05%	345	18.30%
Occupations unique to primary industry	85	4.47%	90	4.77%
Occupations unique to processing; manufacturing and utilities	95	5.00%	75	3.98%
Occupations not elsewhere classified	40	2.11%	10	0.53%
Total - All Occupations (major groups)	1,900	100.00%	1,885	100.00%
Females - All Occupations	910	47.89%	875	46.42%
Males - All Occupations	990	52.11%	1,005	53.32%

Source: Statistics Canada 1996 & 2001 Census (numbers may not add up due to rounding)

Income

Family Income (Number of Families)	1996	%	2001	%
less than \$19,999	55	5.98%	90	10.71%
\$20,000 - \$39,999	365	39.67%	350	41.67%
\$40,000 - \$59,999	260	28.26%	325	38.69%
\$60,000 and over	240	26.09%	205	24.40%
Total number of families	920	100.00%	970	115.48%
Average family income	\$49,228		\$52,555	
Median family income	\$43,241		\$46,962	

Source: Statistics Canada 1996 & 2001 Census (numbers may not add up due to rounding)

Household Income (Number of Households)	1996	%	2001	%
less than \$19,999	425	25.60%	385	22.71%
\$20,000 - \$39,999	560	33.73%	525	30.97%
\$40,000 - \$59,999	390	23.49%	360	21.24%
\$60,000 and over	105	6.33%	435	25.66%
Total number of households	1,660	100.00%	1,695	100.00%
Average household income	\$39,069		\$43,938	
Median household income	\$34,088		\$36,282	

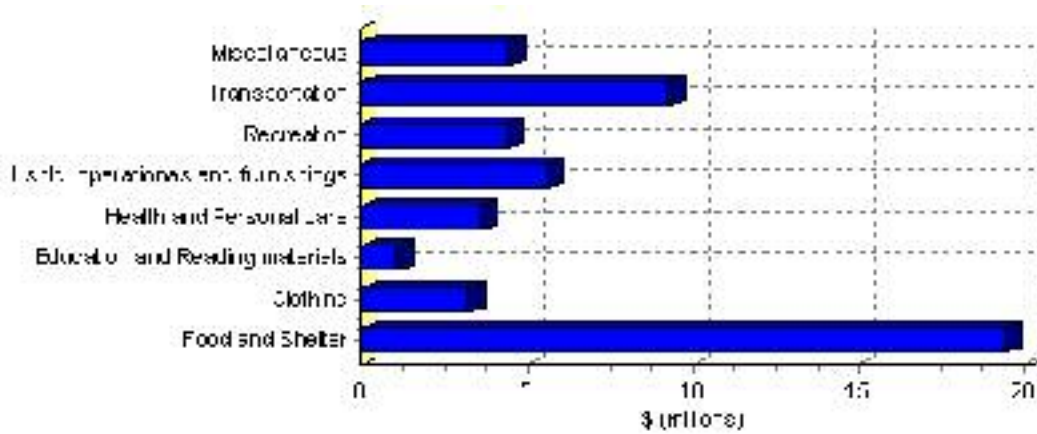
Source: Statistics Canada 1996 & 2001 Census (numbers may not add up due to rounding)

Family Expenditure

Expenditure Category	1992	% of total	1996	% of total
Food and Shelter	\$16,783,050	38.02%	\$19,453,818	37.98%
Clothing	\$2,917,575	6.61%	\$3,275,726	6.39%
Education and Reading materials	\$855,925	1.94%	\$1,065,208	2.08%
Health and Personal care	\$2,798,225	6.34%	\$3,624,230	7.08%
Hshld. operations and furnishings	\$4,830,375	10.94%	\$5,648,699	11.03%
Recreation	\$3,368,100	7.63%	\$4,389,194	8.57%
Transportation	\$9,032,475	20.46%	\$9,291,284	18.14%
Miscellaneous	\$3,536,100	8.01%	\$4,476,096	8.74%
Total Current Consumption	\$44,145,325	100.00%	\$51,224,255	100.00%
Total # of Households	1,675		1,661	
Average Consumption per Household	\$26,355		\$30,839	

Source: Statistics Canada Family Expenditure Survey 1992 & 1996 (numbers may not add up due to rounding).

Barrhead Family Expenditures (1996)

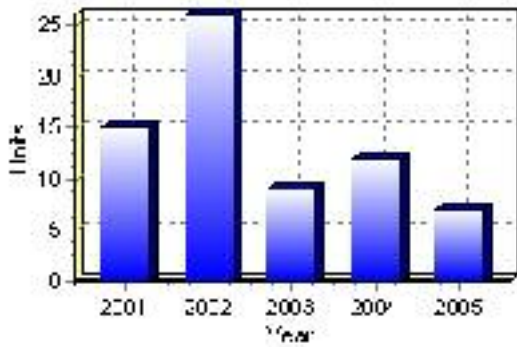


Building Permits

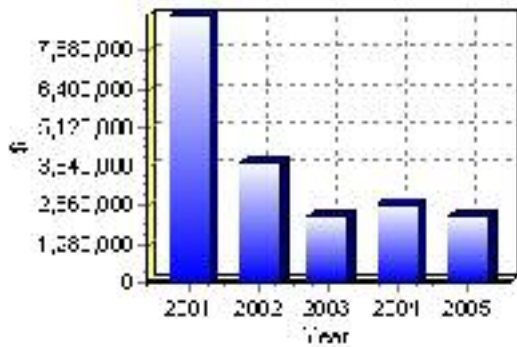
Total Building Permit Values	2001	2002	2003	2004	2005
Building Permits Value, Commercial	\$2,678,000	\$935,000	\$300,000	\$715,000	\$885,000
Building Permits Value, Industrial	\$0	\$250,000	\$0	\$365,000	\$35,000
Building Permits Value, Institutional	\$4,200,000	\$295,000	\$480,000	\$0	\$250,000
Building Permits Value, Residential	\$1,951,000	\$2,487,000	\$1,404,000	\$1,513,000	\$1,012,000
Building Permits Value, Total	\$8,829,000	\$3,967,000	\$2,184,000	\$2,593,000	\$2,182,000
Total Housing Starts	15	26	9	12	7

Source: Statistics Canada 2000-2004 Building Permits (numbers may not add up due to rounding)

Total Housing Starts



Value of Building Permits



Dwellings

Occupied Private Dwellings by Type	1996	% of total	2001	% of total
Apartments	255	15.36%	240	14.16%
Detached Duplexes	0	0.00%	10	0.59%
Movable Dwellings	110	6.63%	85	5.01%
Other single attached house	0	0.00%	5	0.29%
Row and semi-detached house	50	3.01%	110	6.49%
Single-detached house	1,240	74.70%	1,235	72.86%
Total number of occupied private dwellings	1,660	100.00%	1,695	100.00%
Private dwellings, owned	1,150	69.28%	1,210	71.39%
Private Dwellings, rented	515	31.02%	485	28.61%

Source: Statistics Canada 1996 & 2001 Census (numbers may not add up due to rounding)

Private Dwellings by Period of Construction	# of Dwellings	% of total
Period of construction, before 1946	100	5.92%
Period of construction, 1946 - 1960	320	18.93%
Period of construction, 1961 - 1970	285	16.86%
Period of construction, 1971 - 1980	515	30.47%
Period of construction, 1981 - 1990	290	17.16%
Period of construction, 1991 - 2001	180	10.65%
Total number of private dwellings constructed	1,690	100.00%

Source: Statistics Canada 2001 Census (numbers may not add up due to rounding)

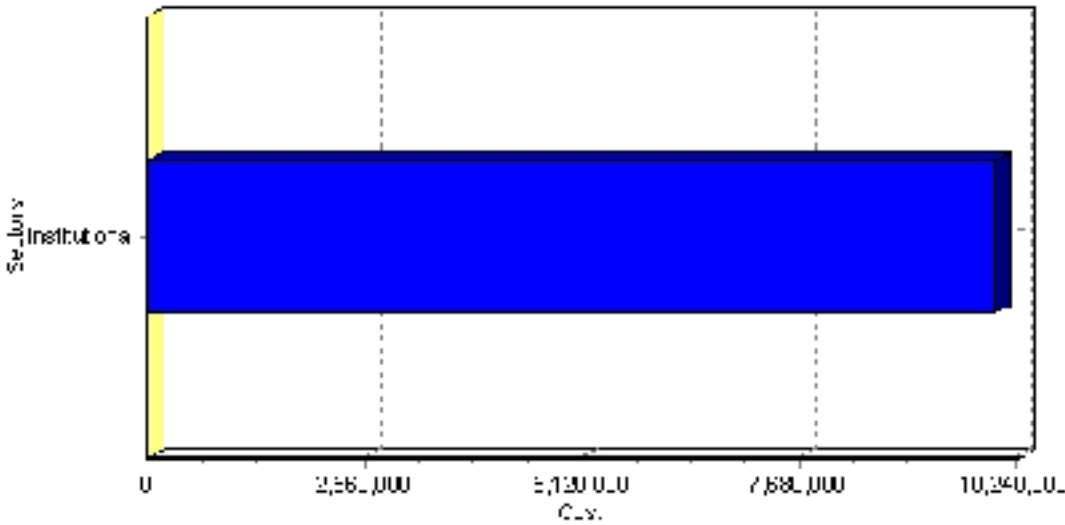
Projects

Summary of Projects in Barrhead as of September 2006

Project Sector	Number of Projects	Project Cost
Institutional	1	\$10,000,000
Total	1	\$10,000,000

This inventory lists projects in Alberta that have recently been completed, are under construction, or are proposed to start construction. Not all projects are listed due to reasons of confidentiality and/or due to information not being available at the time of printing. Project data is obtained from public information sources, where possible, this data has been verified with the project proponent/developer, users of the Inventory may wish to confirm project data with the proponent/developer. The inventory does not breakdown project expenditures by any given year. The cost of a project is the value of expenditures expected over all phases of project construction, which may span over two or more years. Cost of projects listed in the Inventory are estimated values only. Source: Alberta Economic Development, 2004.

Value of Projects by Sector (as of September 2006)



Project Status	Number of Projects	Project Cost
Proposed	1	\$10,000,000
Total	1	\$10,000,000

This inventory lists projects in Alberta that have recently been completed, are under construction, or are proposed to start construction. Not all projects are listed due to reasons of confidentiality and/or due to information not being available at the time of printing. Project data is obtained from public information sources, where possible, this data has been verified with the project proponent/developer, users of the Inventory may wish to confirm project data with the proponent/developer. The inventory does not breakdown project expenditures by any given year. The cost of a project is the value of expenditures expected over all phases of project construction, which may span over two or more years. Cost of projects listed in the Inventory are estimated values only. Source: Alberta Economic Development, 2004.

Largest Projects in Barrhead as of September 2006

Company Name	Project Description	Project Location	Project Cost	Construction Schedule	Status
Aspen Regional Health Authority	Barrhead Healthcare Centre Redevelopment	Barrhead	\$10,000,000	-	Proposed

Disclaimer: Information in this profile has been provided from a variety of external sources. Although every effort has been made to ensure the accuracy, currency and reliability of the content and data, AlbertaFirst.com Ltd. accepts no responsibility in this regard.

© AlbertaFirst.com Ltd., 2006.