

Onoway

www.onoway.com

Welcome

Onoway, is a pacesetter in welcoming new residential, commercial and industrial development. Businesses with environmentally positive attitudes are encouraged to locate in the "Hub of the Highways".

We are confident you will find our community an excellent place to live and operate your enterprise. Come grow with us!

Mayor and Council
Town of Onoway

Area Overview

Onoway is named after one of its earliest settlers, William P. Beaupre, whose name was translated to "Fairfield" in English, then changed to its Indian equivalent, "Onoway". The community officially became a Village on June 25, 1923. A municipal census in May, 2005 placed our population at 1036, so on September 1st, 2005, Onoway officially became a town!

Onoway is bisected by the Lac Ste. Anne Trail. This historic trail was the route that traders, Indians, pack trains and settlers used in the 1800's. Among the pioneers was Father Thibault who travelled the trail in 1842, from Fort Edmonton to Lac Ste. Anne, where he opened a Catholic Mission that still hosts 20,000 people at the annual Pilgrimage in July.

Community Services

Recreation programs are administered regionally by Lac Ste Anne County Recreation Department who provide residents access to a wide variety of exciting children's programs and interesting adult programs throughout the year. There are many service groups, clubs and organizations in Onoway, ranging from curling and hockey to the Royal Purple, Elks, Royal Canadian Legion, Red Cross and an active seniors group. Youth groups include Cubs, Brownies, Scouts, and Girl Guides.

Town of Onoway
Box 540
Onoway, Alberta
T0E 1V0
Tel: (780) 967-5338
Fax: (780) 967-3226

Onoway Public Library
4808 51 St
PO Box 484
Onoway, AB
T0E 1V0
Tel: (780) 967-2445
Fax: (780) 967-3226

Open five days a week, the Public Library is well equipped with over 10,000 books and reference material. Available free of charge to the public are several computers, complete with a variety of programs, as well as high speed access to the Internet.

Aspen Health Services and Community Care

4919 Lac. Ste. Anne Trail S
PO Box 990
Onoway, AB
T0E 1V0

Population Health Services are delivered where people live, work, study and play. Services available include: Immunization, Prenatal/Postnatal Outreach, Traveler's Health Information, School Health, Food Safety Education, Inspection of Public Facilities, Dental Screening Clinic (3 years old), Health Information (communicable disease, nutrition, oral health, safety, sexual health, genetics and smoke cessation), Parental Education and Wellness Program for Shift Workers.

Community Care health services are provided in a variety of settings (home, school or clinic) for people of all ages. Anyone may refer to Community Care. Services are based on need and may include:

Nursing, Audiology, Respiratory Therapy, Asthma Clinic, Mental Health Outreach & Counseling, Respite Care & Homemaking, Respiratory Rehabilitation Program, Day Program Services, Equipment and other supplies are available through the Alberta Aids to Daily Living program, Physical Therapy, Occupational Therapy, Speech Language Therapy and Personal Care Services.

Canada Post Corporation
4915 Lac. Ste. Anne Trail
Onoway, AB
T0E 1V0
Tel: (780) 967-2454
Toll Free: 1-800-267-1177

Postal outlet for products and services including stamps, money orders, parcel service, courier service, retail claims and collection, etc.

Economic Development Committee
PO Box 540
Onoway, AB
T0E 1V0
Tel: (780) 967-5338
Fax: (780) 967-5441
E-mail: onowayed@telusplanet.net
Web Page: www.onoway.com

The Economic Development Committee exists to promote the Town of Onoway and to attract new business and residents to the municipality.

Lac Ste Anne County Region 1
Family and Community Support Services
PO Box 540
Onoway, AB
T0E 1V0
Tel: (780) 967-5338
Fax: (780) 967-3226
E-mail: info@onoway.com

Family and Community Support Services are designed to: Promote, encourage, and support volunteer work in the community; promote the social development of children and their families (babysitting and parenting courses); enrich and strengthen family life by developing skills in people, thus helping them function more effectively in their environment (suicide prevention training, wills and estate planning); enhance the quality of life of the retired and semi-retired (self help programs, meals on wheels); and inform the

public of available services (referral services, information directories, newcomer services).

First Onoway Scouting (Beavers, Cubs, Scouts)

PO Box 806
Onoway, AB
T0E 1V0
Tel: (780) 967-3735

The Beaver program emphasizes having fun while encouraging children to feel good about themselves, their friends and family, God, and nature.

Girl Guides of Canada (Sparks, Brownies, Guides)

PO Box 889
Onoway, AB
T0E 1V0
Tel: (780) 967-3315
Fax: (780) 967-3315

Girl Guides of Canada offers programs that encourage citizenship, challenge, personal growth, an appreciation of the environment and service to ones community. The programs are available to females between the ages of 5 and 15.

Lac Ste. Anne
East Food Bank Society
PO Box 300
Onoway, AB
T0E 1V0
Tel: (780) 967-2266

The Lac Ste. Anne East Food Bank Society exists to serve as an emergency relief food service to people who reside in the Lac Ste. Anne boundary. Clients must be referred through a set referral system.

Emergency hampers generally last between 3 to 5 days. Donations are picked up every Wednesday, between 9:00 am and 12 noon.

Lac Ste. Anne Regional Family and Community Support Services

PO Box 219
Saugudo, AB
T0E 2A0
Tel: (780) 967-3466
Fax: (780) 967-2359

Lac Ste. Anne Regional Family and Community Support Services is a regional system that provides recreational experiences, FCSS (Family and Community Support Services), Early Intervention Programming for Children's Services, and Adult and Continuing Education for six different municipalities in the Lac Ste. Anne County area.

Ladies Auxiliary of the Royal Canadian Legion

PO Box 185
Onoway, AB
T0E 1V0
Tel: (780) 967-5486

A volunteer organization that assists with the provision of community services including blood donor clinics and Remembrance Day poppy sales.

Meals on Wheels
PO Box 73
Onoway, AB
T0E 1V0
Tel: (780) 967-2338
Fax: (780) 967-2110

This organization exists to provide a frozen meal program to seniors and other eligible residents of Onoway and surrounding area.

Onoway Adventure Club
PO Box 986
Onoway, AB
T0E 1V0
Tel: (780) 967-4945

A club where children ages 5 to 9 years of age learn about God, family, self-realization, health, safety and nature, and have the opportunity to earn a number of different awards. Other activities include camping trips, field trips and a variety of crafts.

The club is held every second week throughout the school year at the 7th Adventist Church in Onoway.

Onoway and District Agricultural Society (ODAS)
PO Box 458
Onoway, AB
T0E 1V0
Tel: (780) 967-3509

The Agricultural Society owns, operates, and manages the Onoway Arena. The skating arena operates from the middle of September to the end of March. Activities include hockey and figure skating, as well as a free New Year's Day skate.

Throughout the summer, the Agricultural Society hosts community dances and a bullarama. Community garage sales are held every May and September.

Onoway and District Chamber of Commerce
PO Box 723
Onoway, AB
T0E 1V0
Tel: (780) 967-2211
Fax: (780) 967-3226

The Chamber of Commerce is an organization of responsible people concerned with improving the business and living conditions of the Village of Onoway. Their goals are to promote and encourage business and to provide information distribution for visitors and local residents. The mandate of the Onoway and District Chamber of Commerce is to promote and raise the profile of the many businesses in the Onoway area.

Onoway and District Golden Club
General Delivery
Onoway, AB
T0E 1V0
Tel: (780) 967-2345
Fax: (780) 967-3226

This senior's club is open every Tuesday afternoon from 1:00 pm to 5:00 pm. Activities include lunches, pool, cards, bocci ball and

croquet. Every second Thursday, members play Court Whist and in the fall, Military Whist is played periodically.

Onoway and District Heritage Days Society

PO Box 540

Onoway, AB

T0E 1V0

Tel: (780) 967-3079

Fax: (780) 967-3226

A group of community members and business representatives working together to organize the Heritage Days event, which takes place every year on the first weekend in June. Participants enjoy music in the park, a ball tournament, a parade, a children's festival, fiddlers contest, family dance and fireworks. There is plenty of fun, entertainment and games planned for all ages.

Onoway Community Hall Board (OFEA)

PO Box 540

Onoway, AB

T0E 1V0

Tel: (780) 967-967-5347

The facility can be rented out for a variety of events including weddings, showers, social gatherings, dances, meetings, etc. Bingo's are held at the Community Hall every Wednesday evening.

The goal of the OFEA is to promote and encourage use of the Community Hall as a community centre for Onoway and the surrounding area.

Onoway Elks Lodge (BPOE)

PO Box 21

Onoway, AB

T0E 1V0

Tel: (780) 967-5525

Fundraising activities include an annual Casino, in which funds are distributed to different community organizations in need of financial assistance (Cubs, Scouts, Minor Ball Association, Minor Hockey Association, etc.).

Royal Canadian Legion No 132

PO Box 471

Onoway, AB

T0E 1V0

Tel: (780) 967-4980

Fax: (780) 967-5430

On November 27, 2004 the Royal Canadian Legion No 132 celebrated its 70th anniversary as a branch. The Legion hosts a lounge every Friday from 3:00 pm to 12 midnight, and Saturday 12 noon to 12 midnight. Other activities include steak BBQ's every Friday evening throughout the summer, Sunday evening Bingo's, special entertainment once a month, Remembrance Day Celebrations and a Vet Supper every spring.

The Yellowhead East Business Development Corporation

5028-50 Ave

PO Box 249

Sangudo, AB

T0E 2A0

Tel: (780) 785-2900

Fax: (780) 785-3337

The Yellowhead East Community Futures Society and the Yellowhead East Business Development Corporation were formed in 1989 and opened their doors to small businesses on October 1, 1989. The 2 entities were merged into one organization in 1994 - The Yellowhead East Business Development Corporation.

The Yellowhead East Business Development Corporation has served its region of 12 municipalities and over 38,000 individuals diligently ever since. The vision of the organization over the past nine years has been to promote and assist in the economic development, diversification, and stabilization of the Yellowhead East region, with a special emphasis on job creation.

The current vision of The Yellowhead East Business Development Corporation is "To provide a single window of opportunity through which businesses and other entities can access information, resources, financial assistance, and training in order to foster economic development, resulting in job creation."

Community Lifestyle

The Town of Onoway is equipped with 31 motel/hotel rooms, 5 restaurants, 1 fast food outlet, 1 Restaurant/Bar and numerous retail outlets ready to serve visitors and residents.

Residents and visitors of Onoway have access to a wide selection of natural facilities and attractions. For the sports enthusiast, Onoway provides a curling rink, ice arena, tennis courts and a recently constructed 3 ball diamond recreation complex. In addition to over sixty acres of parks or green areas within Town boundaries, there are 7 large lakes within a half-hour drive of Onoway, which provide opportunity for fishing, boating and water skiing. Water sports, such as skiing, and wind surfing are available at Lac Ste. Anne, 15 km away. The Elks Memorial Park, located in the Town of Onoway, provides sites available for day use or for tents, trailers and small motorhomes. There are numerous golf courses within 45 minutes of Onoway as well as courses in Stony Plain, Spruce Grove and Edmonton. There are a number of hiking trails, which afford access to natural areas unique within the province. The Onoway area is also home to some of the finest hunting and fishing in the Province. During the winter months, Onoway residents have easy access to downhill and cross-country ski trails. Downhill skiing is available at Rabbit Hill (50 km), the Devon Ski Hill (45 km) and at world class facilities 3 and a half-hours away in the Rocky Mountains (350 km).

Onoway's clubs and organizations have contributed countless volunteer hours to provide recreation and entertainment for residents and visitors alike. Some of those organizations include the Minor Ball Association, Minor Hockey Association, Skating Club, Curling Club, Onoway Dart Club, Cross Country Ski Club, Fish and Game Association, etc.

Every year on the first weekend in June, Onoway holds an annual event called Heritage Days. The Heritage Days name was chosen to honor the pioneers, who settled in Onoway and chose to make it their home. Participants enjoy music in the park, a ball tournament, a parade, a children's fair, fiddlers contest, family dance and fireworks. There is plenty of fun entertainment and games planned for all ages.

Onoway is bisected by the Lac Ste. Anne Trail. This historical trail was the route that traders, Natives, pack trains and settlers used in the 1800's. Among the pioneers was Father Thibault who traveled the trail in 1842, from Fort Edmonton to Lac Ste. Anne, where he opened a Catholic Mission. Each July, the route is retraced by visitors from across North America during the annual spiritual pilgrimage to Lac Ste. Anne, about 16 kilometers west of Onoway. Other annual events include a Snowmobile Poker Rally, UCW Strawberry Tea, Onoway Jr/Sr High Christmas Band Concert and Year End Concert, and the Remembrance Day Supper.

Religious Services

- Bethel United Church
- Onoway Evangelical Free Church
- Onoway Baptist Church
- Onoway Trinity Lutheran Church

- Onoway Seventh-day Adventist Church
- St. Rose of Lima Catholic Church

Hospitality

Accommodation

- Onoway Hotel
- Star Inn Motel

Restaurants

- Hungry Hunter
- Star Inn Restaurant
- Burger Baron
- Jade Garden Restaurant
- Onoway Food & Gas

Economic Base

Onoway's major economic base is agriculture, farm service, gravel and retail and service trade.

Resources available locally are gravel, oil, natural gas and bentonite. Products available are agriculture, drilling mud, gravel, air filters, fibreglass products, livestock equipment, oilfield equipment and safety supplies.

For individuals wishing to start a business, or relocate an existing firm, the Town of Onoway provides excellent incentives for the business owner and unlimited opportunity for establishing light, medium or heavy industry in its well-serviced Industrial Park. Given the transportation routes from Onoway, the lower tax base, and a service area of over 16,000 people, Onoway is an excellent location for virtually any business.

Economic Facts

Major Businesses

Aspen Health Services
 4919 Lac Ste. Anne trail
 PO Box 990
 T0E 1V0
 Tel: (780) 967-4440
 Fax: (780) 967-4433
 E-mail: www.aspenrha.ca

Population Health Services are delivered where people live, work, study and play. Services available include: Immunization, Prenatal/Postnatal Outreach, Traveler's Health Information, School Health, Food Safety Education, Inspection of Public Facilities, Dental Screening Clinic (3 years old), Health Information (communicable disease, nutrition, oral health, safety, sexual health, genetics and smoke cessation), Parental Education and Wellness Program for Shift Workers.

Community Care health services are provided in a variety of settings (home, school or clinic) for people of all ages. Anyone may refer to Community Care. Services are based on need and may include: Nursing, Audiology, Respiratory Therapy, Asthma Clinic, Mental Health Outreach & Counseling, Respite Care & Homemaking, Respiratory Rehabilitation Program, Day Program Services, Equipment and other supplies are available through the Alberta Aids to Daily Living program, Physical Therapy, Occupational Therapy, Speech Language Therapy and Personal Care Services.

Country Automotive Specialists Ltd.
5031 Lac Ste. Anne trail
PO Box 820
Onoway, AB
T0E 1V0
Tel: (780) 967-2218
Fax: (780) 967-2208

In service for 25 years, Country Automotive Specialists Ltd. offers complete automotive services including alignments, brakes, shocks, front-end repair, electrical diagnosis, general maintenance, tune-ups and air conditioning for all cars and trucks up to 1 ton. Also available are automotive parts, domestic vehicle parts, tires and batteries.

Instrumental Electric Inc. (IEI)
Box 873
Onoway, AB
T0E 1V0
Tel: (780) 967-2474
Fax: (780) 967-3292

Products and services include SCADA installation, electrical panel installation and instrumentation controls.

Kynard Fiberglass Ltd.
5215 Ronden Street
PO Box 87
Onoway, AB
T0E 1V0
Tel: (780) 967-4555
Fax: (780) 967-3588

The manufacturer of fiberglass tubs and shower units.

Lac Ste. Anne Natural Gas Co-op Ltd.
PO Box 600
Onoway, AB
T0E 1V0
Tel: (780) 967-2246
Fax: (780) 967-3000
Toll Free: 1-800-290-5491

The Gas Co-op supplies natural gas services and appliances.

Morand Industries Ltd.
4311 Industrial Ave
PO Box 266
Onoway, AB
T0E 1V0
Tel: (780) 967-2500
Fax: (780) 967-3810
E-mail: morand@telusplanet.net
Web Page: www.morand.ab.ca

Manufacturers of livestock equipment, such as maternity pens, panels, gates, buffalo and elk equipment etc.

Northern Gateway Regional School Division No 10
4104 Kepler St
PO Box 840
Whitecourt, AB
T7S 1M8
Tel: (780) 778-2800
Fax: (780) 778-6719
Toll Free: 1-800-262-8674
E-mail: ngrdlodo@telusplanet.net
Web Page: ngrd.org/

In accordance with legislation, goals of schooling, board policy and regulations, Northern Gateway Regional Division No. 10 shall be responsible for: The achievement and growth of each student; the confidence and satisfaction of students; the performance of staff; the confidence and satisfaction of parents and the community; the physical environment and assets; and the financial status of the division.

The current mission of the School Division is "To provide the best possible educational program to each student within the resources available, recognizing the importance of student, staff and public involvement in the educational process."

Onoway Lumber and Building Supplies Ltd.
4327 Industrial Ave
PO Box 519
Onoway, AB
T0E 1V0
Tel: (780) 967-2274
Fax: (780) 967-3490

A wide selection of lumber and building supplies are available for purchase.

Onoway Veterinary Clinic
5119 Lac Ste. Anne Trail N
PO Box 681
Onoway, AB
T0E 1V0
Tel: (780) 967-2967
Fax: (780) 967-3042

A comprehensive, multi-species Veterinary Medical Practice dedicated to quality care of all animals.

Stand Stone Waste Services Ltd.
4219 Industrial Ave
PO Box 381
Onoway, AB
T0E 1V0
Tel: (780) 967-4455
Fax: (780) 967-4111

Provides commercial, industrial, residential, acreage and farm waste pick-up and disposal services (2-6 yard containers and roll off containers).

Woodhaven Cabinets Ltd.

4703 50 Ave
PO Box 9
Onoway, AB
T0E 1V0
Tel: (780) 967-2303
Fax: (780) 967-3671

Custom residential and commercial kitchens, furniture and woodworking services.

Financial Institutions

Alberta Treasury Branch

Canadian Imperial Bank of Commerce

Education

Onoway schools are administered by the Northern Gateway Regional School Division No. 10, which is headquartered in Whitecourt, Alberta (780-778-2800), with sub-office located in Onoway.

A preschool playgroup is offered through Lac Ste. Anne County Regional Recreation. (Tel: 459-1900)

Public

The Town of Onoway is the location of 2 schools. Onoway Elementary School services children from Kindergarten to grade 6 and Onoway Jr. & Sr. High School covers grades 7 through 12. As this is the regional high school for the eastern portion of Lac Ste. Anne County, it draws from a large area. Over 1,000 students come to Onoway every day to receive the individualized attention that only a rural school system can provide.

Modern facilities and progressive teacher produce students well equipped to enter the workforce and the technological world that they must face after graduation. Music is an enjoyable elementary, junior and senior high school program, and paintings by students artists can be found displayed throughout the high school. Industrial arts programs provide hands-on experience to junior and senior high school students.

Also found within the Town of Onoway is 1 Public Library with over 10,000 books and reference material, several public access computers as well as a job search computer and resources.

Separate

N/A

Private

N/A

Emergency Services

All emergency services are dispatched through 9-1-1.

Fire Protection

Onoway is served by 18 trained volunteer fire fighters, a 1000 gallon pumper, rescue van, a 2000 gallon tanker and 39 fire hydrants. Administration: 967-5338

Police Services

Onoway is served by the Stony Plain detachment of the Royal Canadian Mounted Police [RCMP] including a half time officer.
Onoway Officer - Telephone: 424-4001.
RCMP Complaint Line: 780-968-7267
RCMP Administration: 780-968-7200

Ambulance Services

Onoway is served by the Parkland Ambulance Authority, headquartered in Stony Plain. An ambulance is located in or near Onoway 24 hours a day Administration: 780-963-4330

Health Care

The nearest hospital is the West View Health Center (Hospital), which is located 33 km south of Onoway in Stony Plain. Aspen Health Services and Community Care office provides many services including speech, occupational and physical therapy, home care, public health, community genetics, dental hygienist, lab and xray facilities, etc. The Alberta Mental Health Clinic offers the services of mental health professionals. The Parkland Ambulance Authority, headquartered in Stony Plain, serves the Onoway area (an ambulance is located in or near Onoway 24 hours a day). The Town's Volunteer Fire Department provides fire protection services to area residents. Onoway is served by the Stony Plain detachment of the Royal Canadian Mounted Police (RCMP) including the shared services of an enhanced RCMP officer.

Also found within the Town of Onoway is a dentist, a denturist, a full pharmacy, a massage therapist, as well as numerous dietary supplement distributors. Support groups, such as Alcoholics Anonymous and Al-anon are available within Onoway.

A Touch of Synergy
Lot 5 Block 2 Sturgeon Heights Subdivision
PO Box 101
Onoway, AB
T0E 1V0
Tel: (780) 967-2489
Fax: (780) 967-3920
E-mail:ahandson@telusplanet.net

In addition to therapeutic massage, A Touch of Synergy offers ear candling, vitaflex therapy, trauma release therapy, somato emotional release, craniosacral therapy, weightloss management, iridology and herbal consultations.

Aspen Health Services
4919 Lac Ste. Anne Trail S
PO Box 990
Onoway, AB
T0E 1V0
Tel: (780) 967-4440
Fax: (780) 967-4433
Web Page: www.aspenha.ca.

Population Health Services are delivered where people live, work, study and play. Services available include: Immunization, Prenatal/Postnatal Outreach, Traveler's Health Information, School Health, Food Safety Education, Inspection of Public Facilities, Dental Screening Clinic (3 years old), Health Information (communicable disease, nutrition, oral health, safety, sexual health, genetics and smoke cessation), Parental Education and Wellness Program for Shift Workers.

Community Care health services are provided in a variety of settings (home, school or clinic) for people of all ages. Anyone may refer to Community Care. Services are based on need and may include: Nursing, Audiology, Respiratory Therapy, Asthma Clinic, Mental Health Outreach & Counseling, Respite Care & Homemaking, Respiratory Rehabilitation Program, Day Program Services, Equipment and other supplies are available through the Alberta Aids to

Daily Living program, Physical Therapy, Occupational Therapy, Speech Language Therapy and Personal Care Services.

E.A. Krause Professional Corporation
51 Street and 50 Avenue
PO Box 669
Onoway, AB
T0E 1V0
Tel:(780) 967-2949
Fax: (780) 967-2949

Family dental services.

Allin Clinic - Onoway
4919 Lac Ste Anne Trail S
PO Box 46
Onoway, AB
T0E 1V0
Tel: (780) 967-6477

Medical services are provided to Town residents by 1 physician and staff.

West View Health Center (Hospital)
4405 South Park Drive
Stony Plain, AB
T7Z 1P9
Tel: (780) 968-3600

General hospital services and 10 acute care beds are available.

Key Contacts for Business Development

Municipal

Town of Onoway
Box 540
Onoway, Alberta
T0E 1V0
Tel: 780-967-5338
Fax: 780-967-3226
[Onoway Web Page](#)

Patrick Yuill
Mayor

Ryan Bard
Municipal Manager

Provincial (Updated May 2006)

David Pattison
Director, Edmonton Region
Regional Development Branch

Alberta Economic Development
5th Floor, Commerce Place
10155 - 102 Street
EDMONTON, AB T5J 4L6
Tel: 780-427-6648
Fax: 780-422-5804
E-Mail: david.pattison@gov.ab.ca
(updated May 10, 2004)
Jan Couper, Client Services Representative
Tel: 780-427-6291
E-Mail: jan.couper@gov.ab.ca

Ryan Bard
Economic Development Officer
Village of Onoway
Box 540
Onoway, Alberta
T0E 1V0
Tel: 780-967-5338
Fax: 780-967-5441
Cell 780-909-3662
E-mail:ryan@onoway.com

George VanderBurg
Member of the Legislative Assembly [MLA]
Whitecourt - Ste. Anne Constituency

Constituency Office
P.O. Box 3618
4811 Crockett Street
Mayerthorpe, AB
T0E 1N0
Phone: (780) 786-1997
Toll Free: 1-800-786-7136
Fax: (780) 786-1995
whitecourt.steanne@assembly.ab.ca

Legislature Office
#203 Legislature Building
10800-97 Avenue
Edmonton, AB
T5K 2B6
Phone: (780) 415-4855
Fax: (780) 415-4853

Federal (Updated May, 2006)

Rob Merrifield
Member of Parliament [MP]
Yellowhead Constituency

Parliamentary Address

House of Commons
Ottawa, Ontario
K1A 0A6
Telephone: (613) 992-1653
Fax: (613) 992-3459
E-Mail: Merrifield.R@parl.gc.ca

Constituency Address
119 - 50th Street, PO Box 7887
Edson, Alberta
T7E 1V9
Telephone: (780) 723-6068 1-800-268-7117
Fax: (780) 723-5060
TTY:
E-Mail:
5023 - 50 Avenue, P.O. Box 1495
Whitecourt, Alberta
T7S 1P3
Telephone: (780) 706-2067
Fax: (780) 706-2085

Location

Located 60 km northwest of Edmonton at the junction of Highways 37 and 43, in close proximity to the Yellowhead Trans Canada Highway 16, the Town of Onoway is strategically located to meet your transportation needs. A Canadian National Railroad, built to mainline standards, intersects Onoway. Air facilities are located in and near Edmonton, Greyhound Canada bus service makes 2 stops daily and numerous trucking companies in Onoway and surrounding area serve local residents and businesses.

With a population of 1036, the Town of Onoway provides an excellent mix of urban and rural lifestyles. Residents of the area are afforded the relaxed, friendly atmosphere for which "small town" Alberta is noted. However, given Onoway's close proximity to the larger centers such as Spruce Grove and Edmonton, local citizens also have the opportunity to attend any function such as the theatre, sporting events, or any other leisure event that city residents enjoy.

Post Secondary Education

The Town of Onoway is within commuting distance of Edmonton based post-secondary institutions such as The University of Alberta, Northern Alberta Institute of Technology (NAIT), Grant MacEwan Community College, and Concordia University College of Alberta.

A satellite campus of Norquest College is located in Stony Plain.

Taxation

	<u>Residential/Farmland</u>	<u>Non-Residential</u>
<u>2005</u>		
Municipal Tax Rate	11.5500	16.3000
Education - Alberta School Foundation Fund Tax Rate	3.8762	6.1850
Seniors Lodge Accommodation Tax Rate	.1520	.1520

Mill Rates [2004]

Residential - Public N/A

Residential - Separate N/A

Non-Residential - Public N/A

Non-Residential - Separate N/A

Transportation

Highways connecting to the Town of Onoway are Highway 43, leading west to Whitecourt and south to Highway 16 (Yellowhead Trans Canada Highway), and Highway 37, leading east to Edmonton and Highway 2.

The nearest air facility is located at Villeneuve, 27 km southeast of Onoway. The nearest commercial and airfreight services are located at the Edmonton Municipal (60 km east) and Edmonton International (70 km southeast) airports.

Onoway is serviced by a Canadian National Railway branch line. It is built to mainline standards and spur trackage is available. Greyhound Canada bus lines makes 2 stops daily. Numerous trucking companies found within Onoway and surrounding area provide services to local businesses and residents.

Canada Post, Greyhound Canada, Trail Courier & Holdings and Purolator Courier Ltd. provide courier services to Town residents and businesses.

Greyhound Canada
4914 - 50 Street
Onoway, AB
T0E 1V0
Tel: (780) 967-6892
Toll Free: 1-800-661-8747

The Greyhound depot, located in Capricorn Computers & Music, provides bus and courier services to the residents of Onoway. The depot is open Monday through Friday, 8:30 am to 5:30 pm, Saturday 9 am to 5 pm, and is closed on Sundays and holidays.

Hay Jim Trucking & Construction
PO Box 6
Onoway, AB
T0E 1V0
Tel: (780) 967-5849

Provides general trucking and hauling services in Onoway and surrounding area.

L & P Industries Ltd.
5208 Lac Ste. Anne Trail
PO Box 789
Onoway, AB
T0E 1V0
Tel: (780) 967-4799

General trucking and hauling services.

Possum Trucking
RR#3
Onoway, AB
T0E 1V0

Tel: (780) 967-4073
Fax: (780) 967-4073
E-mail: adehek@hotmail.com

Offers general hauling services (dirt, gravel, sand, etc.) in Onoway and surrounding area.

Purolator Courier Ltd.
4927 50 Ave
PO Box 690
Onoway, AB
T0E 1V0
Tel: (780) 967-2241
Fax: (780) 967-2141
Toll Free: 1-888-744-7123

The Purolator Courier depot is located in the Onoway Health Care Pharmacy, which is open Monday through Saturday, 9 am to 6 pm. Items are dropped off and picked up once daily.

Trail Courier & Holdings
Onoway, AB
T0E 1V0
Tel: (780) 945-1364

A private courier pick-up and drop-off service, operating Monday through Friday, 9 am to 5 pm.

Tyschuck Construction Ltd.
PO Box 420
Onoway, AB
T0E 1V0
Tel: (780) 967-5360
Fax: (780) 967-5059

Provides services in the areas of road construction, water and sewer, private sewage systems, dugouts, bush clearing, site preparation, lease building and close up, excavation equipment and contracted services, environmental soil work (soil remediation), subdivision development, driveway construction and bridge construction and renewal.

Utilities

Electrical Power

Service Provider: Epcor 310-4300

Wire Provider: Aquila 310-9473

Natural Gas

ATCO Gas: 310-5678

Telephone

Telus
Tel: 310-3100
Toll Free: 1-800-361-3311
Fax: 780-310-3000

Web Page: www.telusplanet.net

Water Supply

Town of Onoway

PO Box 540

Onoway, AB

T0E 1V0

Tel: 780-967-5338

Fax: 780-967-3226

E-mail: info@onoway.com

Web Page: www.onoway.com

The source of water is 2 local wells. The water pressure is 60 pounds per square inch.

Waste Management

Sewage treatment is provided by 4 anaerobic cells and 2 detention ponds.

Residential, commercial and industrial garbage is collected weekly.

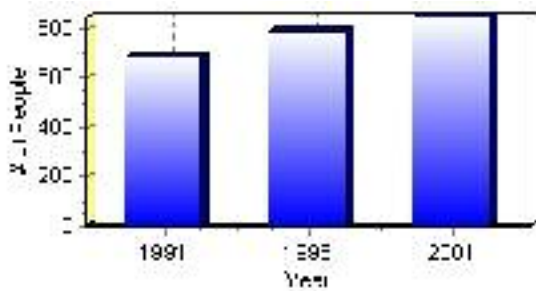
Population

Total Population

Population 2004*	847
Population 2003*	847
Population 2002*	847
Population 2001**	850
Population 2000*	788
Population 1996**	788
Population 1991**	681
Population % change 1991-1996	13.58%
Population % change 1996-2001	6.97%

* Source: Official Population List, Alberta Municipal Affairs
** Source: Statistics Canada 1991, 1996, & 2001 Census

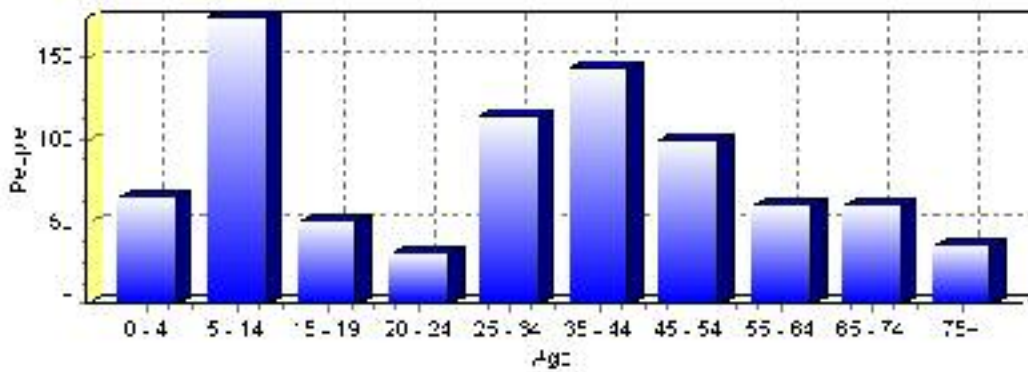
Total Population 1991-2001



Population by Age and Gender	1996 Male	1996 Female	1996 Total	2001 Male	2001 Female	2001 Total
Age 0 - 4	35	35	70	30	35	65
Age 5 - 14	70	70	140	95	80	175
Age 15 - 19	35	25	60	25	25	50
Age 20 - 24	25	15	40	20	10	30
Age 25 - 34	70	70	140	55	60	115
Age 35 - 44	55	60	115	65	80	145
Age 45 - 54	30	30	60	50	50	100
Age 55 - 64	25	40	65	25	35	60
Age 65 - 74	35	30	65	25	35	60
Age 75 and older	10	20	30	15	20	35
Total All Persons	390	400	790	415	430	845

Source: Statistics Canada 1996 & 2001 Census (numbers may not add up due to rounding)

Onway Population by Age Group (2001)

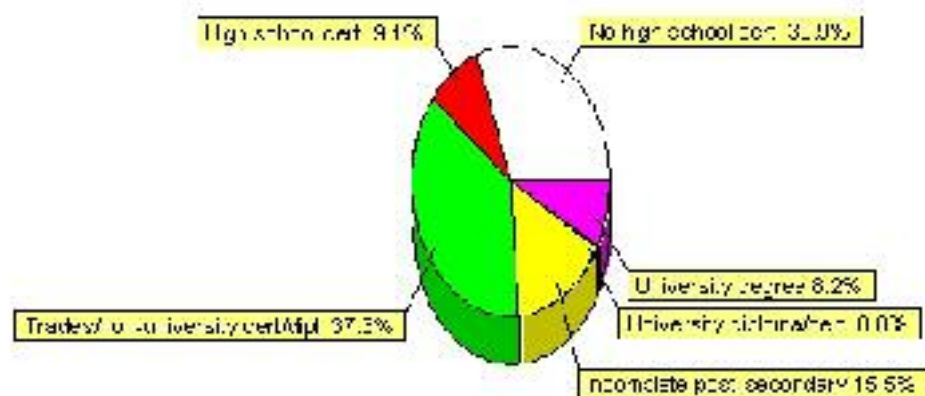


Education Statistics

Highest level of schooling for Population 20yrs and older	2001	%
People without high school certificates	170	30.91%
People with high school certificates	50	9.09%
People with trades or non-university certificate or diploma	205	37.27%
People with post-secondary education (not completed)	85	15.45%
People with university diploma/certificate	0	0.00%
People with university degree	45	8.18%
Total Population 20 years and older	550	100.00%

Source: Statistics Canada 2001 Census (numbers may not add up due to rounding)

Oneway Highest Level of Schooling 2001



Population with Post Secondary Qualifications	1996	%	2001	%
Agriculture and biological sciences	0	0.00%	10	4.00%
Commerce, management and business administration	25	15.15%	35	14.00%
Educational, recreational and counseling services	35	21.21%	30	12.00%
Engineering and applied science tech. and trades	65	39.39%	140	56.00%
Engineering and applied sciences	0	0.00%	0	0.00%
Fine and applied arts	0	0.00%	15	6.00%
Health professionals, science and technologies	15	9.09%	10	4.00%
Humanities and related fields	10	6.06%	10	4.00%
Mathematics and physical sciences	0	0.00%	0	0.00%
Social sciences and related fields	10	6.06%	10	4.00%
Other and/or no specialization	0	0.00%	0	0.00%
Total people with post secondary qualifications	165	100.00%	250	100.00%
Females with post-secondary qualifications	80	48.48%	110	44.00%
Males with post-secondary qualifications	85	51.52%	140	56.00%

Source: Statistics Canada 1996 & 2001 Census (numbers may not add up due to rounding)

Labour Force

Labour force by activity	1996	2001
In the labour force, both sexes	355	420
Not in the labour force, both sexes	215	205
Total population 15 and over	575	625
Employed, both sexes	315	380
Unemployed, both sexes	40	35
Participation rate, both sexes	62.00%	67.00%
Unemployment rate, both sexes	11.00%	8.00%

Source: Statistics Canada 1996 & 2001 Census (numbers may not add up due to rounding)

Labour Force by Industry Division	1996	% of total	2001	% of total
Agriculture	0	0.00%	0	0.00%
Mining	10	2.99%	15	3.57%
Manufacturing	45	13.43%	40	9.52%
Construction	25	7.46%	60	14.29%
Transportation. & Utilities	20	5.97%	20	4.76%
Retail and Wholesale	60	17.91%	60	14.29%
Finance	20	5.97%	25	5.95%
Business & Community Services	125	37.31%	155	36.90%
Public Administration	0	0.00%	30	7.14%
Total All Industries	335	100.00%	420	100.00%

Source: Statistics Canada 1996 & 2001 Census (numbers may not add up due to rounding)

Oneway Labour Force By Industry - 2001



Labour Force by Major Occupational Groups	1996	%	2001	%
Management occupations	40	11.94%	25	5.95%
Business, Finances and administrative occupations	45	13.43%	95	22.62%
Natural and applied sciences and related occupations	0	0.00%	10	2.38%
Health occupations	10	2.99%	10	2.38%
Occupations in social science; education; government and religion	20	5.97%	20	4.76%
Occupations in art; culture; recreation and sport	15	4.48%	20	4.76%

Sales and service occupations	105	31.34%	95	22.62%
Trades; transport; equipment operators and related occupations	50	14.93%	135	32.14%
Occupations unique to primary industry	15	4.48%	10	2.38%
Occupations unique to processing; manufacturing and utilities	30	8.96%	10	2.38%
Occupations not elsewhere classified	20	5.97%	0	0.00%
Total - All Occupations (major groups)	335	100.00%	420	100.00%
Females - All Occupations	150	44.78%	185	44.05%
Males - All Occupations	185	55.22%	230	54.76%

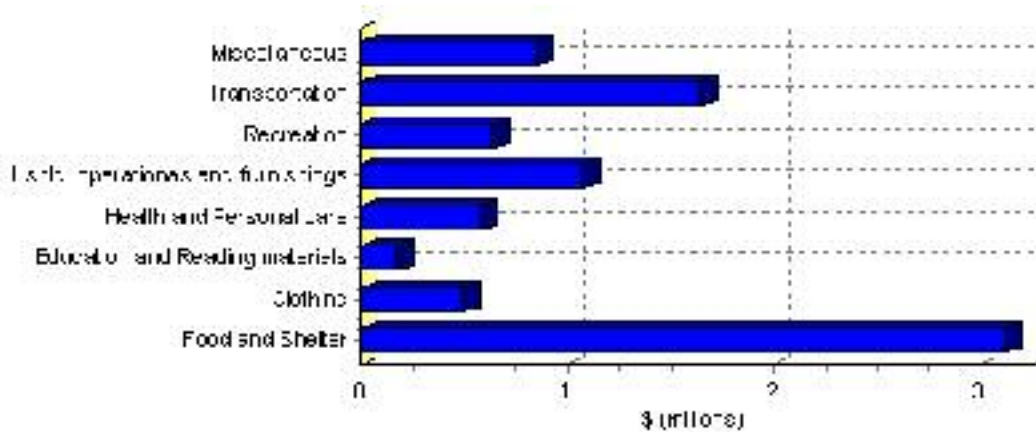
Source: Statistics Canada 1996 & 2001 Census (numbers may not add up due to rounding)

Family Expenditure

Expenditure Category	1992	% of total	1996	% of total
Food and Shelter	\$2,571,725	38.47%	\$3,124,282	36.32%
Clothing	\$423,850	6.34%	\$493,627	5.74%
Education and Reading materials	\$117,275	1.75%	\$174,073	2.02%
Health and Personal care	\$424,305	6.35%	\$584,816	6.80%
Hshld. operations and furnishings	\$727,095	10.88%	\$1,077,107	12.52%
Recreation	\$485,775	7.27%	\$642,441	7.47%
Transportation	\$1,372,395	20.53%	\$1,653,339	19.22%
Miscellaneous	\$557,420	8.34%	\$851,908	9.90%
Total Current Consumption	\$6,684,150	100.00%	\$8,601,593	100.00%
Total # of Households	260		289	
Average Consumption per Household	\$25,708		\$29,763	

Source: Statistics Canada Family Expenditure Survey 1992 & 1996 (numbers may not add up due to rounding).

Onoway Family Expenditures (1996)

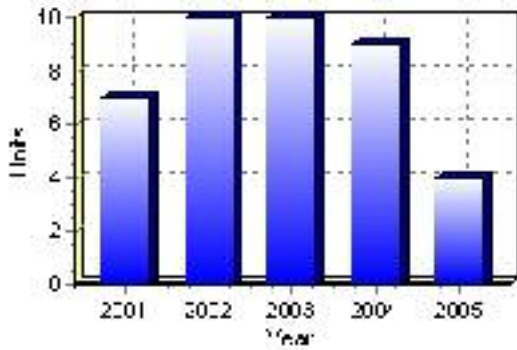


Building Permits

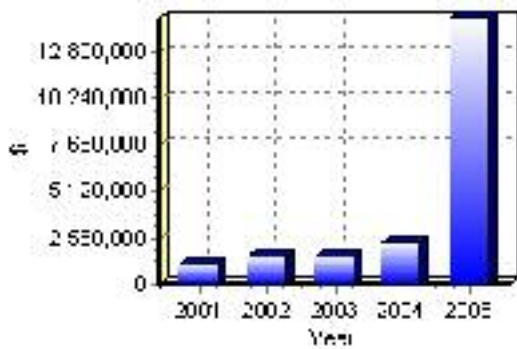
Total Building Permit Values	2001	2002	2003	2004	2005
Building Permits Value, Commercial	\$229,000	\$0	\$240,000	\$362,000	\$294,000
Building Permits Value, Industrial	\$225,000	\$0	\$400,000	\$0	\$0
Building Permits Value, Institutional	\$0	\$0	\$10,000	\$0	\$13,900,000
Building Permits Value, Residential	\$655,000	\$1,512,000	\$888,000	\$1,942,000	\$440,000
Building Permits Value, Total	\$1,109,000	\$1,512,000	\$1,538,000	\$2,304,000	\$14,634,000
Total Housing Starts	7	10	10	9	4

Source: Statistics Canada 2000-2004 Building Permits (numbers may not add up due to rounding)

Total Housing Starts



Value of Building Permits



Dwellings

Occupied Private Dwellings by Type	1996	% of total	2001	% of total
Apartments	25	8.62%	40	12.90%
Detached Duplexes	10	3.45%	5	1.61%
Movable Dwellings	15	5.17%	5	1.61%
Other single attached house	0	0.00%	10	3.23%
Row and semi-detached house	25	8.62%	5	1.61%
Single-detached house	220	75.86%	245	79.03%
Total number of occupied private dwellings	290	100.00%	310	100.00%
Private dwellings, owned	210	72.41%	200	64.52%
Private Dwellings, rented	80	27.59%	110	35.48%

Source: Statistics Canada 1996 & 2001 Census (numbers may not add up due to rounding)

Private Dwellings by Period of Construction	# of Dwellings	% of total
Period of construction, before 1946	50	16.13%
Period of construction, 1946 - 1960	10	3.23%
Period of construction, 1961 - 1970	40	12.90%
Period of construction, 1971 - 1980	105	33.87%
Period of construction, 1981 - 1990	45	14.52%
Period of construction, 1991 - 2001	60	19.35%
Total number of private dwellings constructed	310	100.00%

Source: Statistics Canada 2001 Census (numbers may not add up due to rounding)

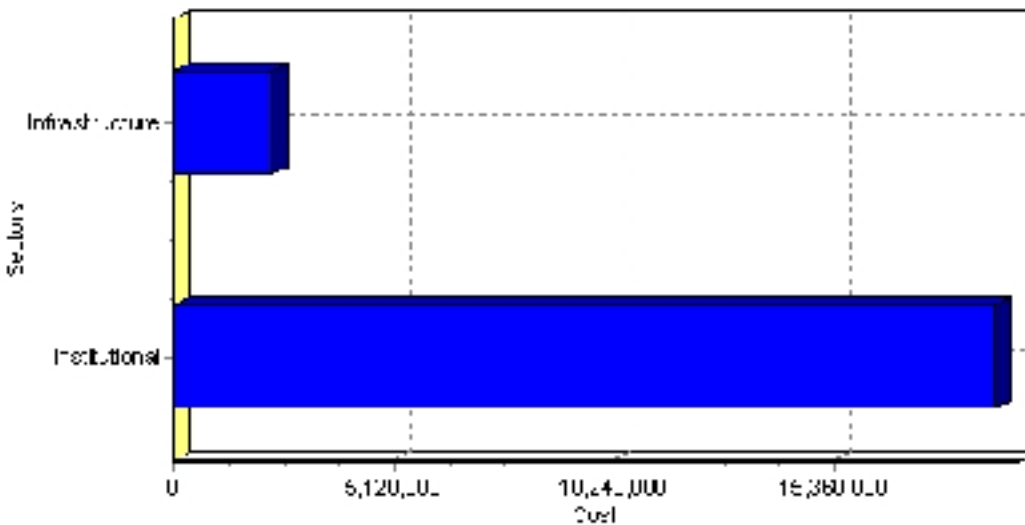
Projects

Summary of Projects in Onway as of September 2006

Project Sector	Number of Projects	Project Cost
Institutional	2	\$19,100,000
Infrastructure	2	\$2,300,000
Total	4	\$21,400,000

This inventory lists projects in Alberta that have recently been completed, are under construction, or are proposed to start construction. Not all projects are listed due to reasons of confidentiality and/or due to information not being available at the time of printing. Project data is obtained from public information sources, where possible, this data has been verified with the project proponent/developer, users of the Inventory may wish to confirm project data with the proponent/developer. The inventory does not breakdown project expenditures by any given year. The cost of a project is the value of expenditures expected over all phases of project construction, which may span over two or more years. Cost of projects listed in the Inventory are estimated values only. Source: Alberta Economic Development, 2004.

Value of Projects by Sector (as of September 2006)



Project Status	Number of Projects	Project Cost
Completed	1	\$10,100,000
Under Construction	3	\$11,300,000
Total	4	\$21,400,000

This inventory lists projects in Alberta that have recently been completed, are under construction, or are proposed to start construction. Not all projects are listed due to reasons of confidentiality and/or due to information not being available at the time of printing. Project data is obtained from public information sources, where possible, this data has been verified with the project proponent/developer, users of the Inventory may wish to confirm project data with the proponent/developer. The inventory does not breakdown project expenditures by any given year. The cost of a project is the value of expenditures expected over all phases of project construction, which may span over two or more years. Cost of projects listed in the Inventory are estimated values only. Source: Alberta Economic Development, 2004.

Largest Projects in Onoway as of September 2006

Company Name	Project Description	Project Location	Project Cost	Construction Schedule	Status
Alberta Infrastructure and Transportation*	Replacement School (K to Grade 6)	Onoway	\$10,100,000	2005-2006	Completed
Lac Ste. Anne Foundation	Chateau Lac Ste. Anne Seniors Supportive Living Project	Onoway	\$9,000,000	2006-2007	Under Construction
Village of Onoway	Sewer Work	Onoway	\$1,800,000	2006-2006	Under Construction
Village of Onoway	Waterline - 52 St.	Onoway	\$500,000	2006-2006	Under Construction

Disclaimer: Information in this profile has been provided from a variety of external sources. Although every effort has been made to ensure the accuracy, currency and reliability of the content and data, AlbertaFirst.com Ltd. accepts no responsibility in this regard.

© AlbertaFirst.com Ltd., 2006.