



2005-06 Government and Lottery Fund Estimates

Presented by the Honourable Shirley McClellan
Minister of Finance
in the Legislative Assembly of Alberta
April 13, 2005

TABLE OF CONTENTS

Preface.....	1
Government Organization Changes	5
Budget Methodology Change.....	5
Department Program Structure.....	6
Ministry Entity Structure.....	7
Schedule of Amounts to be Voted.....	8
Government and Lottery Fund Estimates.....	11
Voted Expense and Equipment / Inventory Purchases.....	12
Voted Expense	13
Voted Equipment / Inventory Purchases	14
Voted Capital Investment.....	14
Voted Non-Budgetary Disbursements.....	15
Voted Lottery Fund Payments.....	15
Statutory Non-Budgetary Disbursements.....	15
Statutory Expense	16
Statutory Capital Investment.....	16

DETAILS OF THE 2005-06 GOVERNMENT AND LOTTERY FUND ESTIMATES

ABORIGINAL AFFAIRS AND NORTHERN DEVELOPMENT

Voted Estimates.....	19
Statement of Operations.....	26
Full-Time Equivalent Employment.....	28

ADVANCED EDUCATION

Voted Estimates.....	29
Statement of Operations.....	37
Full-Time Equivalent Employment.....	39

AGRICULTURE, FOOD AND RURAL DEVELOPMENT

Voted Estimates.....	41
Statement of Operations.....	51
Full-Time Equivalent Employment.....	56

CHILDREN'S SERVICES

Voted Estimates.....	57
Statement of Operations.....	64
Full-Time Equivalent Employment.....	79

COMMUNITY DEVELOPMENT

Voted Estimates.....	81
Statement of Operations.....	89
Full-Time Equivalent Employment.....	101

ECONOMIC DEVELOPMENT

Voted Estimates.....	103
Statement of Operations.....	109
Full-Time Equivalent Employment.....	111

TABLE OF CONTENTS

EDUCATION	
Voted Estimates.....	113
Statement of Operations.....	120
Full-Time Equivalent Employment.....	124
ENERGY	
Voted Estimates.....	125
Statement of Operations.....	131
Full-Time Equivalent Employment.....	136
ENVIRONMENT	
Voted Estimates.....	137
Statement of Operations.....	143
Full-Time Equivalent Employment.....	145
EXECUTIVE COUNCIL	
Voted Estimates.....	147
Statement of Operations.....	152
Full-Time Equivalent Employment.....	154
FINANCE	
Voted Estimates.....	155
Statement of Operations.....	163
Full-Time Equivalent Employment.....	184
GAMING	
Voted Estimates.....	185
Lottery Fund Estimates.....	192
Statement of Operations.....	194
Full-Time Equivalent Employment.....	200
GOVERNMENT SERVICES	
Voted Estimates.....	201
Statement of Operations.....	210
Full-Time Equivalent Employment.....	212
HEALTH AND WELLNESS	
Voted Estimates.....	213
Statement of Operations.....	221
Full-Time Equivalent Employment.....	226
HUMAN RESOURCES AND EMPLOYMENT	
Voted Estimates.....	227
Statement of Operations.....	239
Full-Time Equivalent Employment.....	241
INFRASTRUCTURE AND TRANSPORTATION	
Voted Estimates.....	243
Statement of Operations.....	250
Full-Time Equivalent Employment.....	252
INNOVATION AND SCIENCE	
Voted Estimates.....	253
Statement of Operations.....	258
Full-Time Equivalent Employment.....	264

TABLE OF CONTENTS

INTERNATIONAL AND INTERGOVERNMENTAL RELATIONS	
Voted Estimates.....	265
Statement of Operations.....	268
Full-Time Equivalent Employment.....	270
JUSTICE	
Voted Estimates.....	271
Statement of Operations.....	281
Full-Time Equivalent Employment.....	283
MUNICIPAL AFFAIRS	
Voted Estimates.....	285
Statement of Operations.....	292
Full-Time Equivalent Employment.....	294
RESTRUCTURING AND GOVERNMENT EFFICIENCY	
Voted Estimates.....	295
Statement of Operations.....	304
Full-Time Equivalent Employment.....	306
SENIORS AND COMMUNITY SUPPORTS	
Voted Estimates.....	307
Statement of Operations.....	316
Full-Time Equivalent Employment.....	329
SOLICITOR GENERAL	
Voted Estimates.....	331
Statement of Operations.....	337
Full-Time Equivalent Employment.....	341
SUSTAINABLE RESOURCE DEVELOPMENT	
Voted Estimates.....	343
Statement of Operations.....	350
Full-Time Equivalent Employment.....	356
List of Government Entities by Ministry.....	359
List of Government Entities by Name.....	362
List of Government Entities by Type.....	364

PREFACE

Budget 2005 consists of: (i) *Budget 2005 - Fiscal Plan*, (ii) *Budget 2005 - Business Plans*, (iii) the *2005-06 Offices of the Legislative Assembly Estimates* and (iv) this document, the **2005-06 Government and Lottery Fund Estimates**.

The typical **Department Program Structure** is depicted on page 6, showing programs, sub-programs and elements identifying principal services, programs and cost centres.

The typical **Ministry Entity Structure** is shown on page 7, showing its department and any regulated funds, provincial agencies, commercial enterprises and Crown corporations.

The **Schedule of Amounts to be Voted** is excerpted from the *Appropriation Act, 2005*. The Legislative Assembly will be asked to appropriate funding from the General Revenue Fund and the Lottery Fund, and to provide spending authority to departments.

Definition of Terms

Expense and Equipment / Inventory Purchases. Expense consists of salaries, supplies and services, grants, amortization of capital assets, consumption of inventories and debt servicing costs.

Equipment / inventory purchases consist of consumable inventories and movable capital assets, which are routinely moved or which may be installed as a service level improvement to existing facilities, as follows:

- (i) regardless of value: assets such as mobile accommodation; mobile elevators; mobile equipment; tools; movable safety, recreation and rehabilitation equipment; attractive assets; appliances; display cases; furnishings; furniture; office equipment; shelving; and storage containers.
- (ii) consumable inventories (only for the departments of Health and Wellness, Infrastructure and Transportation, and Sustainable Resource Development).
- (iii) projects and equipment costing less than \$5,000,000 over one or more years, such as scientific, medical, laboratory, information technology, communication and security systems and facilities.
- (iv) vehicles.

Capital Investment consists of immovable capital assets, equipment required for their construction, equipment installed upon construction or replacement, renovations to immovable capital assets which extend their life and major scientific and information technology acquisitions as follows:

- (i) regardless of value: land; buildings; highways; roads; bridges; transportation and storage facilities; permanent accommodation; communications towers and other fixed devices; dams; water, sewage and disposal facilities; irrigation facilities; oil, gas, and electricity transmission facilities; lighting and traffic facilities; elevators; ecological reserves, parks and sports facilities; heating, ventilation and air conditioning systems; laboratories; and construction projects.
- (ii) regardless of value: equipment used in the construction of immovable capital assets, such as cranes, earth-moving equipment, tractors and conveyors.
- (iii) projects and equipment costing more than \$5,000,000 over one or more years, such as major scientific, medical, laboratory, information technology, communications and security systems and facilities.

PREFACE - *continued*

Non-budgetary disbursements consist of the exchange of cash for another form of asset, or for the reduction of a liability.

Lottery Fund payments consist of transfers of lottery proceeds to departments for selected projects.

Voted Estimates for each department show the amount of each vote, program, sub-program and element. Amounts are shown for expense and equipment / inventory purchases, as well as capital investment. Lottery-funded initiatives are also identified.

The Voted Estimates contain **net budgeting provisions** for goods and services which are subject to variable demand and for which a recovery or credit can be derived from internal or external sources. The Voted Estimates for these goods and services show the gross expense, recovery or credit, and the net expense. If, during the fiscal year, expenses and credits or recoveries are both expected to exceed the amount budgeted, Treasury Board may increase the Voted Estimate, pursuant to section 24(2) of the *Financial Administration Act*. If the budgeted credits or recoveries are not realized, the gross expense is managed so that it does not exceed the gross estimate less the shortfall in credits or recoveries. Net budgeting provisions also apply to capital investment.

Comparable amounts are shown for the 2003-04 Actuals, the 2004-05 Forecast, and the 2004-05 Budget, which have been restated using the government organization and budgeting methodology in effect on April 1, 2005. These changes are described on page 5. The Comparable 2003-04 Actuals are based on the government's annual report published on June 29, 2004. The Comparable 2004-05 Budget is based on the budget tabled on March 24, 2004. The Comparable 2004-05 Forecast includes changes shown in the Quarterly Budget Report tabled on February 28, 2005. Supplementary funding authorization was provided by Supplementary Estimates tabled on March 8, 2005. Additional funding authorization was provided by carry-over of the 2003-04 unused capital investment appropriation, pursuant to section 28.1 of the *Financial Administration Act*.

Other budget information for each ministry and entity consists of:

- the ministry's consolidated statements of operations by program and by entity,
- the ministry's capital investment, change in capital assets and intra-ministry transactions,
- each entity's statement of operations, accumulated net revenue and change in capital assets, and
- the ministry's full-time equivalent employment.

The change in capital assets includes **new capital investment**. For departments, this consists of voted and statutory capital investment, which may include equipment / inventory purchases.

Three lists of entities are provided, starting on page 359, showing government entities by ministry, name and type.

GOVERNMENT ORGANIZATION CHANGES

On November 24, 2004, a restructuring of government ministries was announced. This changed the responsibilities of some ministries, created new ministries and eliminated others. The 2005-06 Estimates reflect the organization changes as follows:

The **Ministry of Advanced Education** became responsible for post-secondary education, which was formerly the responsibility of the Ministry of Learning.

The **Ministry of Education** became responsible for basic education which was formerly the responsibility of the Ministry of Learning.

The **Ministry of Finance** became responsible for former responsibilities of the Ministry of Revenue.

The **Ministry of Human Resources and Employment** became responsible for immigration services which were formerly the responsibility of the Ministry of Learning.

The **Ministry of Infrastructure and Transportation** assumed the responsibilities of the formerly separate Ministries of Infrastructure and Transportation.

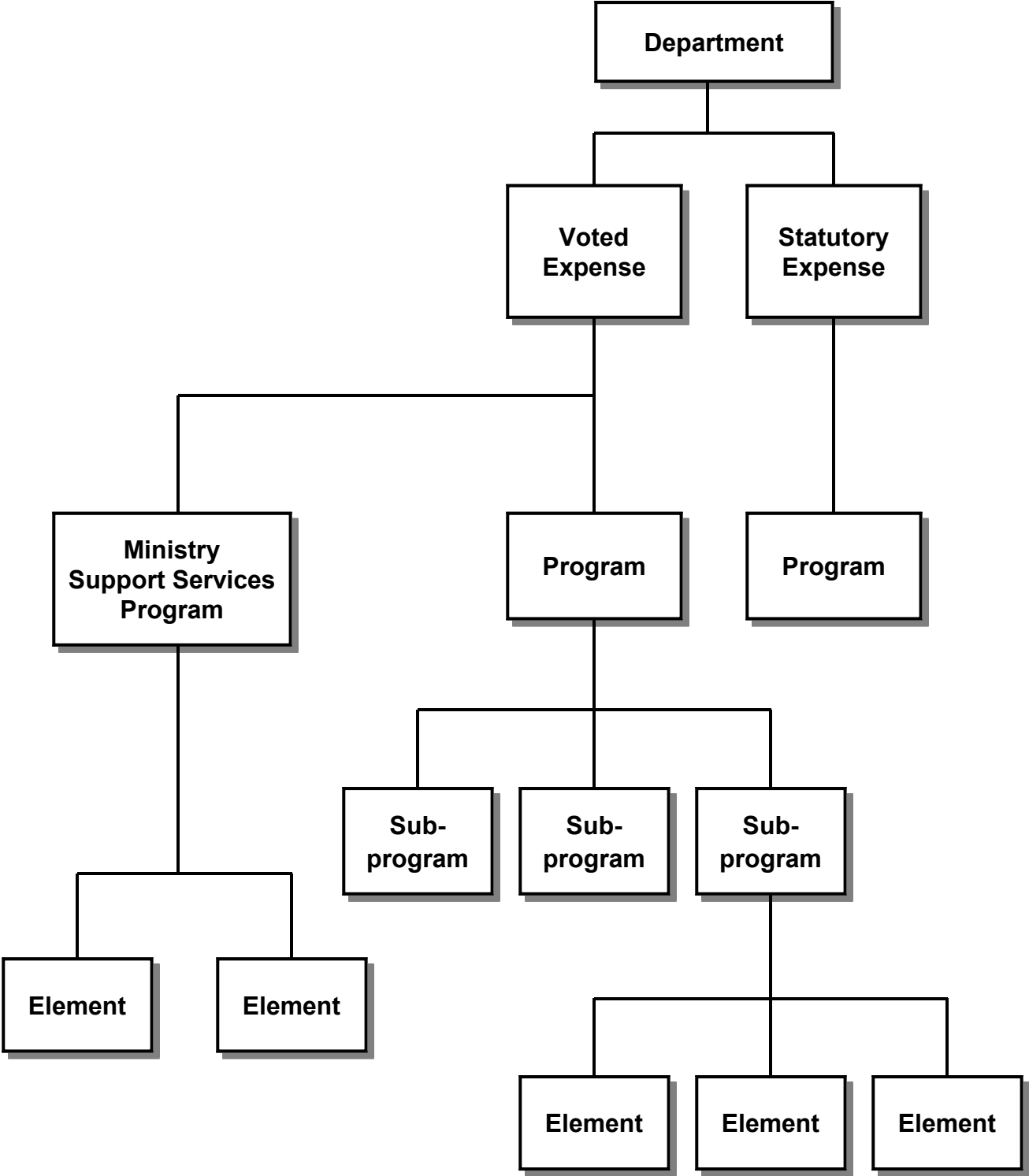
The **Ministry of Restructuring and Government Efficiency** assumed responsibilities for the Office of the Chief Corporate Information Officer (formerly the responsibility of the Ministry of Innovation and Science) and for the Alberta Corporate Service Centre (formerly the responsibility of the Ministry of Government Services).

The **Ministry of Seniors and Community Supports** assumed the responsibilities of the former Ministry of Seniors. It also became responsible for Persons with Developmental Disabilities (formerly the responsibility of the Ministry of Community Development). The new ministry also became responsible for the Assured Income for the Severely Handicapped program (formerly the responsibility of the Ministry of Human Resources and Employment), and for the Alberta Aids to Daily Living program (formerly the responsibility of the Ministry of Health and Wellness).

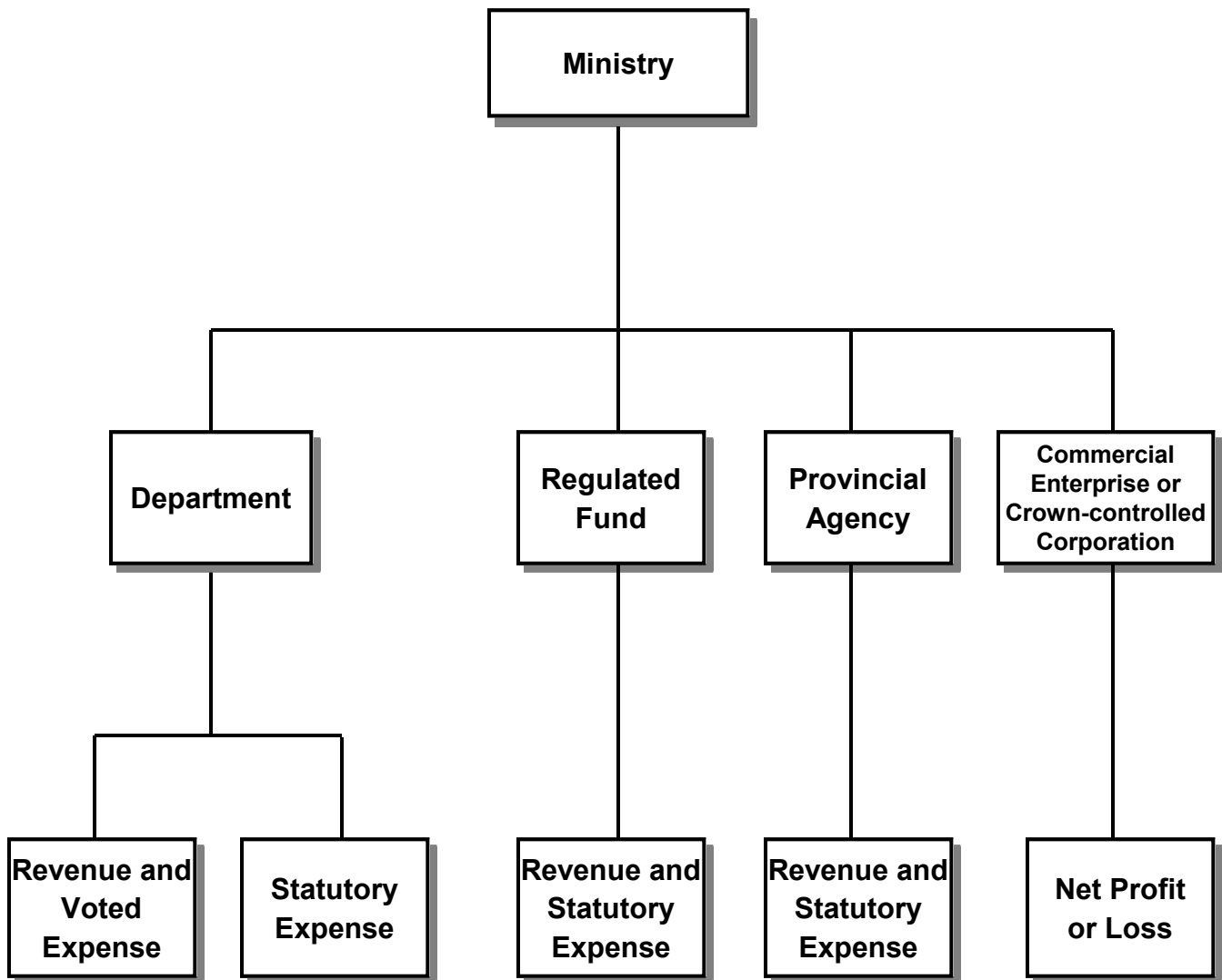
BUDGET METHODOLOGY CHANGE

Nominal sum disposals - When an asset is disposed of at less than its market value, expense is now based on market value, even if this is below net book value. Similarly, gain (loss) is now based on the difference between market value and book value.

DEPARTMENT PROGRAM STRUCTURE



MINISTRY ENTITY STRUCTURE



SCHEDULE OF AMOUNTS TO BE VOTED

for the Fiscal Year ending March 31, 2006

DEPARTMENT / VOTE	Estimates
GOVERNMENT	
ABORIGINAL AFFAIRS AND NORTHERN DEVELOPMENT	
Expense and Equipment / Inventory Purchases	\$ 29,449,000
ADVANCED EDUCATION	
Expense and Equipment / Inventory Purchases	\$ 1,582,176,000
Non-Budgetary Disbursements	\$ 117,400,000
AGRICULTURE, FOOD AND RURAL DEVELOPMENT	
Expense and Equipment / Inventory Purchases	\$ 649,515,000
CHILDREN'S SERVICES	
Expense and Equipment / Inventory Purchases	\$ 793,954,000
COMMUNITY DEVELOPMENT	
Expense and Equipment / Inventory Purchases	\$ 235,249,000
Capital Investment	\$ 41,192,000
ECONOMIC DEVELOPMENT	
Expense	\$ 79,750,000
EDUCATION	
Expense and Equipment / Inventory Purchases	\$ 2,726,068,000
Non-Budgetary Disbursements	\$ 1,000,000
ENERGY	
Expense and Equipment / Inventory Purchases	\$ 121,467,000
ENVIRONMENT	
Expense and Equipment / Inventory Purchases	\$ 136,003,000
Non-Budgetary Disbursements	\$ 1,000,000
EXECUTIVE COUNCIL	
Expense	\$ 26,246,000
FINANCE	
Expense and Equipment / Inventory Purchases	\$ 123,381,000
Non-Budgetary Disbursements	\$ 69,651,000
GAMING	
Expense	\$ 169,187,000
Lottery Fund Payments	\$ 1,207,533,000
GOVERNMENT SERVICES	
Expense and Equipment / Inventory Purchases	\$ 99,046,000
HEALTH AND WELLNESS	
Expense and Equipment / Inventory Purchases	\$ 8,973,425,000
Capital Investment	\$ 33,500,000

SCHEDULE OF AMOUNTS TO BE VOTED - *Continued*
for the Fiscal Year ending March 31, 2006

DEPARTMENT / VOTE	Estimates
HUMAN RESOURCES AND EMPLOYMENT	
Expense and Equipment / Inventory Purchases	\$ 778,691,000
INFRASTRUCTURE AND TRANSPORTATION	
Expense and Equipment / Inventory Purchases	\$ 3,463,437,000
Capital Investment	\$ 699,618,000
INNOVATION AND SCIENCE	
Expense and Equipment / Inventory Purchases	\$ 135,267,000
INTERNATIONAL AND INTERGOVERNMENTAL RELATIONS	
Expense and Equipment / Inventory Purchases	\$ 10,079,000
JUSTICE	
Expense and Equipment / Inventory Purchases	\$ 287,531,000
MUNICIPAL AFFAIRS	
Expense and Equipment / Inventory Purchases	\$ 128,417,000
RESTRUCTURING AND GOVERNMENT EFFICIENCY	
Expense and Equipment / Inventory Purchases	\$ 258,071,000
SENIORS AND COMMUNITY SUPPORTS	
Expense and Equipment / Inventory Purchases	\$ 1,582,528,000
SOLICITOR GENERAL	
Expense and Equipment / Inventory Purchases	\$ 390,556,000
SUSTAINABLE RESOURCE DEVELOPMENT	
Expense and Equipment / Inventory Purchases	\$ 219,215,000
Capital Investment	\$ 20,500,000
<hr/>	
Amount of Expense or Expense and Equipment / Inventory Purchases to be voted under section 1(2) of the <i>Appropriation Act, 2005</i>	\$ 22,998,708,000
Amount of Capital Investment to be voted under section 2 of the <i>Appropriation Act, 2005</i>	\$ 794,810,000
Amount of Non-Budgetary Disbursements to be voted under section 3 of the <i>Appropriation Act, 2005</i>	\$ 189,051,000
Amount of Lottery Fund Payments to be voted under section 4 of the <i>Appropriation Act, 2005</i>	\$ 1,207,533,000



GOVERNMENT AND LOTTERY FUND ESTIMATES
(thousands of dollars)

	2005-06 Estimates			Gross Comparable		
	Gross	Credit or Recovery	Net	2004-05 Forecast	2004-05 Budget	2003-04 Actual
EXPENSE and EQUIPMENT / INVENTORY PURCHASES to be voted	22,998,708	(1,391,677)	21,607,031	21,692,843	19,800,788	19,200,116
CAPITAL INVESTMENT to be voted	794,810	(4,500)	790,310	708,401	591,146	455,985
NON-BUDGETARY DISBURSEMENTS to be voted	189,051	-	189,051	210,259	217,559	222,239
LOTTERY FUND PAYMENTS to be voted	1,207,533	-	1,207,533	1,217,924	1,167,831	1,132,116

VOTED EXPENSE and EQUIPMENT / INVENTORY PURCHASES

(thousands of dollars)

DEPARTMENT	2005-06 Estimates			Gross Comparable		
	Gross	Credit or Recovery	Net	2004-05 Forecast	2004-05 Budget	2003-04 Actual
Aboriginal Affairs and Northern Development	29,449	-	29,449	25,784	25,784	25,300
Advanced Education	1,582,176	(5,024)	1,577,152	1,395,209	1,375,667	1,315,259
Agriculture, Food and Rural Development	649,515	(7,844)	641,671	948,967	431,710	1,030,815
Children's Services	793,954	(31,960)	761,994	762,248	735,493	698,166
Community Development	235,249	(8,027)	227,222	195,364	202,461	176,501
Economic Development	79,750	(20)	79,730	58,015	57,509	58,071
Education	2,726,068	(36,926)	2,689,142	2,484,195	2,420,233	2,352,750
Energy	121,467	-	121,467	113,833	113,833	109,269
Environment	136,003	(750)	135,253	131,315	123,135	114,657
Executive Council	26,246	(1,650)	24,596	24,474	24,399	20,468
Finance	123,381	(19,615)	103,766	125,279	125,074	124,555
Gaming	169,187	-	169,187	197,587	164,712	142,769
Government Services	99,046	(4,612)	94,434	83,959	84,614	76,416
Health and Wellness	8,973,425	(919,852)	8,053,573	8,268,121	7,915,861	7,276,780
Human Resources and Employment	778,691	(130,886)	647,805	783,208	743,037	746,327
Infrastructure and Transportation	3,463,437	-	3,463,437	3,202,619	2,607,853	2,325,782
Innovation and Science	135,267	(1,192)	134,075	161,482	122,605	114,592
International and Intergovernmental Relations	10,079	-	10,079	8,524	8,524	6,461
Justice	287,531	(24,551)	262,980	266,998	257,066	240,926
Municipal Affairs	128,417	(1,626)	126,791	150,904	124,304	143,375
Restructuring and Government Efficiency	258,071	(175,317)	82,754	234,435	233,078	226,491
Seniors and Community Supports	1,582,528	-	1,582,528	1,403,346	1,371,036	1,290,858
Solicitor General	390,556	-	390,556	344,036	334,259	269,945
Sustainable Resource Development	219,215	(21,825)	197,390	322,941	198,541	313,583
Total Voted Expense and Equipment / Inventory Purchases	22,998,708	(1,391,677)	21,607,031	21,692,843	19,800,788	19,200,116

VOTED EXPENSE

(thousands of dollars)

DEPARTMENT	2005-06 Estimates			Gross Comparable		
	Gross	Credit or Recovery	Net	2004-05 Forecast	2004-05 Budget*	2003-04 Actual
Aboriginal Affairs and Northern Development	29,324	-	29,324	25,634	25,659	25,300
Advanced Education	1,574,090	(5,024)	1,569,066	1,389,200	1,371,320	1,306,586
Agriculture, Food and Rural Development	646,949	(7,844)	639,105	945,434	430,444	1,027,329
Children's Services	793,654	(31,960)	761,694	760,403	735,193	694,728
Community Development	231,809	(8,027)	223,782	194,236	202,311	176,057
Economic Development	79,750	(20)	79,730	58,009	57,509	58,071
Education	2,721,443	(36,001)	2,685,442	2,483,020	2,418,908	2,350,790
Energy	119,152	-	119,152	112,518	112,518	108,574
Environment	132,818	(750)	132,068	127,230	119,550	113,807
Executive Council	26,246	(1,650)	24,596	24,474	24,399	20,468
Finance	75,235	(19,615)	55,620	69,475	69,620	58,801
Gaming	169,187	-	169,187	197,587	164,712	142,769
Government Services	89,668	(4,612)	85,056	77,566	80,480	73,056
Health and Wellness	8,933,555	(919,852)	8,013,703	8,223,631	7,874,268	7,245,258
Human Resources and Employment	774,893	(130,886)	644,007	779,610	739,439	743,733
Infrastructure and Transportation	3,423,717	-	3,423,717	3,154,037	2,568,003	2,271,252
Innovation and Science	134,967	(1,192)	133,775	161,432	122,305	114,542
International and Intergovernmental Relations	10,054	-	10,054	8,369	8,499	6,461
Justice	286,331	(24,551)	261,780	265,598	255,666	237,821
Municipal Affairs	127,232	(1,626)	125,606	149,392	122,792	138,690
Restructuring and Government Efficiency	255,071	(175,317)	79,754	232,058	230,078	223,491
Seniors and Community Supports	1,582,468	-	1,582,468	1,403,286	1,370,976	1,290,818
Solicitor General	390,376	-	390,376	343,886	334,109	269,901
Sustainable Resource Development	211,538	(21,825)	189,713	315,394	190,994	309,475
Total Voted Expense						
- Program	22,819,527	(1,390,752)	21,428,775	21,501,479	19,629,752	19,007,778
Finance						
Total Voted Expense						
- Debt Servicing Costs	45,247	-	45,247	53,020	53,020	61,493

* The Gross Comparable 2004-05 Budget has been adjusted by:

- (i) a \$926,000 reduction in the Department of Finance to reflect the consolidation of the two former departments of Finance and Revenue;
- (ii) a \$585,000 increase in the Department of Innovation and Science to reflect the transfer of the Alberta Science and Research Authority's responsibilities and budgets to the Department of Innovation and Science, Alberta Research Council Inc. and iCORE., and
- (iii) a \$15,117,000 increase in the Department of Restructuring and Government Efficiency to reflect the provision of services to the Department of Government Services by the Alberta Corporate Service Centre, which was formerly part of the Department of Government Services; and to reflect the provision of financial information through the Alberta Government Integrated Management Information Systems (IMAGIS), which was formerly part of the Department of Innovation and Science.

Equivalent adjustments have been made to the Gross Comparable 2004-05 Forecast and the Gross Comparable 2003-04 Actual.

VOTED EQUIPMENT / INVENTORY PURCHASES

(thousands of dollars)

DEPARTMENT	2005-06 Estimates			Gross Comparable		
	Gross	Credit or Recovery	Net	2004-05 Forecast	2004-05 Budget	2003-04 Actual
Aboriginal Affairs and Northern Development	125	-	125	150	125	-
Advanced Education	8,086	-	8,086	6,009	4,347	8,673
Agriculture, Food and Rural Development	2,566	-	2,566	3,533	1,266	3,486
Children's Services	300	-	300	1,845	300	3,438
Community Development	3,440	-	3,440	1,128	150	444
Economic Development	-	-	-	6	-	-
Education	4,625	(925)	3,700	1,175	1,325	1,960
Energy	2,315	-	2,315	1,315	1,315	695
Environment	3,185	-	3,185	4,085	3,585	850
Executive Council	-	-	-	-	-	-
Finance	2,899	-	2,899	2,784	2,434	4,261
Gaming	-	-	-	-	-	-
Government Services	9,378	-	9,378	6,393	4,134	3,360
Health and Wellness	39,870	-	39,870	44,490	41,593	31,522
Human Resources and Employment	3,798	-	3,798	3,598	3,598	2,594
Infrastructure and Transportation	39,720	-	39,720	48,582	39,850	54,530
Innovation and Science	300	-	300	50	300	50
International and Intergovernmental Relations	25	-	25	155	25	-
Justice	1,200	-	1,200	1,400	1,400	3,105
Municipal Affairs	1,185	-	1,185	1,512	1,512	4,685
Restructuring and Government Efficiency	3,000	-	3,000	2,377	3,000	3,000
Seniors and Community Supports	60	-	60	60	60	40
Solicitor General	180	-	180	150	150	44
Sustainable Resource Development	7,677	-	7,677	7,547	7,547	4,108
Total Voted Equipment / Inventory Purchases	133,934	(925)	133,009	138,344	118,016	130,845

VOTED CAPITAL INVESTMENT

(thousands of dollars)

DEPARTMENT	2005-06 Estimates			Gross Comparable		
	Gross	Credit or Recovery	Net	2004-05 Forecast	2004-05 Budget	2003-04 Actual
Community Development	41,192	-	41,192	9,363	6,562	1,252
Health and Wellness	33,500	(4,500)	29,000	24,895	24,895	5,608
Infrastructure and Transportation	699,618	-	699,618	627,689	515,489	407,529
Restructuring and Government Efficiency	-	-	-	40,921	41,000	27,729
Sustainable Resource Development	20,500	-	20,500	5,533	3,200	13,867
Total Voted Capital Investment	794,810	(4,500)	790,310	708,401	591,146	455,985

VOTED NON-BUDGETARY DISBURSEMENTS

(thousands of dollars)

DEPARTMENT	2005-06 Estimates	Gross Comparable		
		2004-05 Forecast	2004-05 Budget	2003-04 Actual
Advanced Education	117,400	134,200	141,500	116,848
Education	1,000	1,000	1,000	1,452
Environment	1,000	-	-	-
Finance	69,651	75,059	75,059	82,509
Innovation and Science	-	-	-	21,430
Total Voted Non-Budgetary Disbursements	189,051	210,259	217,559	222,239

VOTED LOTTERY FUND PAYMENTS

(thousands of dollars)

DEPARTMENT	2005-06 Estimates	Gross Comparable		
		2004-05 Forecast	2004-05 Budget	2003-04 Actual
Gaming	1,207,533	1,217,924	1,167,831	1,132,116
Total Voted Lottery Fund Payments	1,207,533	1,217,924	1,167,831	1,132,116

STATUTORY NON-BUDGETARY DISBURSEMENTS

(thousands of dollars)

	2005-06 Estimates	Gross Comparable		
		2004-05 Forecast	2004-05 Budget	2003-04 Actual
Loans and Advances				
Agriculture Financial Services Corporation	180,000	120,000	268,300	130,000
Alberta Health Care Insurance Plan and Other	144,300	141,300	131,300	130,100
Debt Retirement				
Redemption of Alberta Savings Certificates	-	10,846	10,920	29,807
Redemption of Debentures and Term Notes	1,153,000	1,432,154	1,424,080	1,585,193
Total Statutory Non-Budgetary Disbursements	1,477,300	1,704,300	1,834,600	1,875,100

STATUTORY EXPENSE

(thousands of dollars)

DEPARTMENT	2005-06 Estimates	Gross Comparable		
		2004-05 Forecast	2004-05 Budget	2003-04 Actual
Aboriginal Affairs and Northern Development	10,000	10,000	10,000	10,011
Advanced Education	83,605	72,105	86,650	37,131
Agriculture, Food and Rural Development	-	600	-	1,535
Children's Services	1,500	1,500	1,500	89
Community Development	227	227	227	388
Economic Development	-	-	-	129
Education	144,590	124,817	124,817	119,795
Energy	35	35	35	464
Environment	5,024	5,104	5,104	8,277
Executive Council	-	-	-	197
Finance	545,870	101,310	94,500	90,904
Gaming	-	-	-	4
Government Services	119	162	111	1,607
Health and Wellness	41,363	44,086	41,363	47,010
Human Resources and Employment	2,659	2,659	2,659	4,448
Infrastructure and Transportation	-	-	-	1,126
Innovation and Science	-	-	-	21,430
International and Intergovernmental Relations	-	-	-	21
Justice	27,836	27,920	27,677	19,414
Municipal Affairs	200	200	200	305
Restructuring and Government Efficiency	260	260	260	210
Seniors and Community Supports	185	185	185	528
Solicitor General	167	167	167	768
Sustainable Resource Development	1,055	1,055	1,055	661
Total Statutory Expense - Program	864,695	392,392	396,510	366,452
Finance				
Total Statutory Expense - Debt Servicing Costs	238,000	264,000	302,000	204,352

STATUTORY CAPITAL INVESTMENT

(thousands of dollars)

DEPARTMENT	2005-06 Estimates	Comparable		
		2004-05 Forecast	2004-05 Budget	2003-04 Actual
Infrastructure and Transportation	83,300	8,600	150,800	6,034
Total Statutory Capital Investment	83,300	8,600	150,800	6,034



Details of 2005-06 Government and Lottery Fund Estimates

