

# Redcliff

[www.town.redcliff.ab.ca](http://www.town.redcliff.ab.ca)

## Welcome

**Welcome** to our community! We hope you will find the information contained within this profile useful. If additional information is required, please contact our representative from the "*Key Contacts*" section.



Mayor William D. Duncan

## Area Overview

Redcliff derives its name from the red shale cliffs overlooking the South Saskatchewan River. It has a rich history which began in the 1880s with the discovery of abundant coal and natural gas reserves. Easy access to this inexpensive resource led to Redcliff being promoted as the "Smokeless Pittsburgh of the West." This drew industries that produced such diverse products as shoes, gloves, cigars, trucks, bricks, glass, flour and more. A cyclone that ravaged several of these businesses started the decline, and the war and a flu epidemic ended the prosperity. Following World War II, the community again experienced steady growth. Redcliff remains progressive and currently boasts a population of almost 5,000.

The Town of Redcliff is known as the "Greenhouse Capital of the Prairies." This is because long hours of sunlight, inexpensive natural gas and proximity to the TransCanada Highway (Highway #1) all contributed to the establishment and success of the largest concentrations of commercial greenhouses in Western Canada. There are over 50 acres under glass or plastic. Cucumbers, tomatoes, and peppers are grown in abundance. The major industries in the area service the petrochemical industry and horticulture production.

Redcliff has an industrial park containing over 50 acres of serviced sites, with expansion land available. There is also approximately 12 acres of commercial sites available in various locations, and approximately 20 acres of horticultural sites available. With the active market in Redcliff and region, these numbers are continuously changing.

The Town of Redcliff develops and promotes residential building sites, with only eight lots remaining in the second phase of a golf course development (Riverview). The new "Westside" development, which is a joint effort between the Town and a private developer, is expected to be available summer 2004, creating approximately 100 lots, with many coulee view lots.

Redcliff is a smaller, safe community in which to raise a family in affordable housing, and still be close to business opportunities.

## Climate

### Temperature

Annual Average 5.1 C (41.2 F)

## Seasonal Averages

- January -12.1 C (10.0 F)
- April 5.9 C (42.6 F)
- July 20.2 C (68.4 F)
- October 7.6 C (45.7 F)

## Annual Precipitation - 348 mm (13.69 inches)

- Rain - 348 mm (13.69 inches)
- Snow - 121.7 cm (48 inches)
- Frost Free Days - 125
- Hours Sunshine - 2252

Redcliff receives one of the highest number of daylight hours in all of Canada, hence the large number of greenhouses located in the Town.

## Community Services

Click [here](#) for a listing of Redcliff's Community Services.

### Municipal Office

Town of Redcliff  
P.O. Box 40  
Redcliff, Alberta T0J 2P0  
Tel: (403) 548-3618  
Fax: (403) 548-6623

### Municipal Library

Redcliff Public Library  
P.O. Box 280  
Redcliff, Alberta T0J 2P0  
Tel: (403) 548-3335

### Parks and Recreation

Community Services Department  
P.O. Box 40  
Redcliff, Alberta T0J 2P0  
Tel: (403) 548-3232

### Provincial

N/A

### Federal

Canada Post  
Tel: (403) 548-3565

## Community Lifestyle

Redcliff continues to grow with new housing starts and businesses coming to the community. With this growth the community continues to offer small town security, friendliness and enthusiasm while encouraging growth and development.

### Recreation

Recreational facilities in Redcliff are first-rate, and include an indoor ice arena with meeting rooms and full concession, an aquatic centre that was originally built for the Southern Alberta Summer Games, a ball diamond complex, tennis court, BMX track, soccer/football field and Scout Hall complex. In addition, the town has an 18-hole golf course, and a 3-sheet curling facility. A skateboard park is also planned.

Throughout the Town there are several park areas, most with playground equipment. A day-use park, River Valley Park, is located adjacent to the river and provides a serene spots for picnics, and a walking trail system. Lion's Park is home of Redcliff's historic water tower, with traditional playground equipment, plenty of open space, picnic tables, kitchen facility, and a recently constructed water park.

The campground includes 14 camp-sites with electrical hook-ups. There is also a sewage dump station, washroom and shower facilities. It costs \$10/night with a maximum stay of 14 nights.

Given Redcliff's proximity to Medicine Hat, residents enjoy access to all the recreational, cultural and social benefits of a larger urban centre.

### **Community Organizations**

Sports organizations in Redcliff include minor baseball, minor hockey, girls softball, T-ball, skating club, ladies fastball league, slo-pitch league, minor soccer, and various golf and curling leagues.

### **Religious Services**

Redcliff Community Church

Tel: (403) 502-6429 or (403) 548-8102

Gordon Memorial United Church

401 - 2nd Street SE

Tel: (403) 548-7110

St. Ambrose Anglican Church

505 - 5th Street SE

Tel: (403) 548-6302

### **Special Annual Events/Attractions**

The major cultural facilities are the Redcliff Museum, the Centennial Library and the churches of Redcliff.

The major annual event occurs the 3rd weekend of June, when Redcliff Days are held. Featured are street sales, pancake breakfast, ball tournaments, the Lions car show and shine and Beer Garden, fireworks, hose coupling contests, mud volleyball and other activities.

Canada Day celebrations occur July 1 of each year and include pancake breakfast, games, entertainment, birthday cake, etc. A free family fun day.

### **Accommodation**

Redcliff Inn/Hilton

Tel: (403) 548-3623

Pallas Motel

Tel: (403) 548-2210

A number of large hotels are in the adjacent Medicine Hat.

### **Restaurants**

There are number of restaurants available in Redcliff. Please refer to the local yellow pages for more information.



Gemini Drive-In, Alberta's Last Operating Drive-In



Hole #5 at Redcliff Riverview Golf Club

## Economic Base

The economic base of Redcliff is centred around the horticulture, the oil and gas industry and fibreglass manufacturing , and brick manufacturing industries. The community bills itself as the "Greenhouse Capital of the Prairies".

Horticulture is represented by nearly 40 greenhouse operations covering close to 50 acres of land. Production on long English cucumbers, tomatoes, peppers, trees and flowers provide employment for over 300 people.

## Economic Facts

The flowers produced by Redcliff Greenhouses Ltd. are sold mainly in Alberta, Saskatchewan and British Columbia. The production of cucumbers is over 1.5 million cases per year, and for tomatoes is 650,000 cases per year. Peppers are also an expanding product and approximately 125,000 cases per year are produced.

Redcliff is the home of smaller service companies assisting the oil and gas industry. The regional offices of Imperial Oil, Petro Canada and Nova Corporation are located in Redcliff.

The main business area in Redcliff is centred along Highway 1, the TransCanada Highway. The downtown commercial area provides all the amenities for the town's residents. Major shopping areas in Medicine Hat are only 10 minutes away.

### **Major Businesses Products/Services**

- Petro Canada - Petrochemicals
- Nova Corporation - Petrochemicals
- Redcliff Greenhouses Ltd. - Greenhouse Vegetables and Flowers
- Red Hat Co-operative Ltd. - Greenhouse Vegetables Processing
- Southrock Ltd. - Road Construction and Paving
- Redcliff Industries - Shipping Depot, Fiberglass Insulation
- Compression-Enerflex - Oilfield Equipment Manufacturing
- Flint Field Services Ltd. - Pipeline Contractor

#### **Financial Institutions**

- Canadian Imperial Bank of Commerce (CIBC)
- Community Credit Union
- Alberta Treasury Branch

## **Education**

Redcliff is part of the Prairie Rose School Division #66, headquartered in Dunmore - Tel: (403) 527-5516].

#### **Daycare/Nursery**

- Rainbow Day Care Centre  
Tel: (403) 548-3084
- Tiny Tot Playroom

#### **Public**

Schools in Redcliff include:

- I.F. Fox Elementary School [K-3]
- Margaret Wooding School [4-6]
- Parkside Junior High School [7-9].

Senior high school students are bussed to Eagle Butte High School in Dunmore. There are also three high schools located in Medicine Hat: Medicine Hat High School, McCoy High School, and Crescent Heights High School.

#### **Separate**

Separate school education services are available in Medicine Hat.

#### **Private**

Christian school services are available in Medicine Hat.

## **Emergency Services**

#### **Fire Protection**

Redcliff has a 24-member volunteer fire department equipped with 3 trucks and an emergency services vehicle - call 9-1-1 for emergencies.

#### **Police Services**

Police services are provided under contract by the Royal Canadian Mounted Police (RCMP) - Tel: (403) 548-2288.

#### **Ambulance Services**

Ambulance service is provided by Medicine Hat Regional Hospital - Tel: (403) 529-8000.

## Health Care

Medicine Hat Regional Hospital provides hospital services to Redcliff residents.

Redcliff has 1 medical clinic and 1 dental clinic. The medical clinic is a branch of the Medicine Hat Medical Arts Centre.

The health unit is part of the Palliser Health Authority System. There is no public health clinic in Redcliff, but an office is maintained for seniors at the Senior Citizen Centre.

There are several nursing homes in Medicine Hat that are operated by the Cypress View Foundation. The Foundation also operates a seniors manor in Medicine Hat.

## Key Contacts for Business Development

### **Municipal**

#### **Town of Redcliff**

P.O. Box 40

Redcliff, Alberta T0J 2P0

Tel: (403) 548-3618

Fax: (403) 548-6623

Mayor - William Duncan

Municipal Manager - Randy Giesbrecht

Email: [randyg@town.redcliff.ab.ca](mailto:randyg@town.redcliff.ab.ca)

#### **Community Futures Entre-Corp Business Development Limited**

#202 - 556 4th Street SE

Medicine Hat, Alberta T1A 0K8

Tel: (403-) 528-2824 or Toll Free: 1-888-528-2824

Fax: (403) 527-3596

Email: [bizinfo@entre-corp.com](mailto:bizinfo@entre-corp.com)

#### **Economic Development Alliance of Southeast Alberta**

607 4th Street SE

Medicine Hat, Alberta T1A 0L1

Tel: (403) 488-7015

Fax: (403) 488-7017

Email: [info@edalliance.com](mailto:info@edalliance.com)

### **Provincial (Updated May 2006)**

Alberta Economic Development/Palliser Economic Partnership

109 Provincial Building

346 - 3 Street, S.E.

Medicine Hat, Alberta T1A 0G7

Tel: (403) 529-3630

Fax: (403) 529-3140

Elvira Smid, Regional Manager

Email: [elvira.smid@gov.ab.ca](mailto:elvira.smid@gov.ab.ca)

Gloria Filgas, Information Officer

Email: [gloria.filgas@gov.ab.ca](mailto:gloria.filgas@gov.ab.ca)

Leonard Mitzel  
Member of the Legislative Assembly [MLA]  
Cypress-Medicine Hat Constituency

Constituency Office  
Trans Canada Place  
#3 - 1299 Trans Canada Way  
Medicine Hat, Alberta T1B 1H9  
Tel: (403) 528-2191  
Toll Free: 1-866-339-2191  
Fax: (403) 528-2278  
Email: [cypress.medicinehat@assembly.ab.ca](mailto:cypress.medicinehat@assembly.ab.ca)

Legislature Office  
620 Legislature Annex  
9718 107 Street  
Edmonton, Alberta T5K 1E4  
Tel: (780) 415-9590  
Fax: (780) 415-0951

**Federal (Updated May 2006)**

Monte Solberg  
Member of Parliament [MP]  
Medicine Hat Constituency

Parliamentary Address  
House of Commons  
Ottawa, Ontario K1A 0A6  
Tel: (613) 992-4516  
Fax: (613) 992-6181  
Email: [Solberg.M@parl.gc.ca](mailto:Solberg.M@parl.gc.ca)

Constituency Address  
24-419 3rd Street South East  
Medicine Hat, Alberta T1A 0G9  
Tel: (403) 528-4698  
Fax: (403) 528-4365

6 - 403 2nd Avenue West, P.O. Box 640  
Brooks, Alberta T1R 1B6  
Tel: (403) 362-7677 or Toll Free: 1-800-565-4694  
Fax: (403) 362-7055

## Location

The Town of Redcliff is located just 5 miles west of Medicine Hat on the Trans Canada Highway.

### Proximity to Other Locations

Location	Miles	Kilometres
Medicine Hat, Alberta	5	10
Brooks, Alberta	61	98

Canadian Forces Base Suffield/Defence Research and Development Canada	21	34
Calgary, Alberta	178	286
Edmonton, Alberta	340	548
Vancouver Port, British Columbia	778	1252
Coutts, Alberta / Sweetgrass USA - 24 hour Border Crossing	123	198
Spokane, USA	652	1049
Seattle, Washington USA	955	1537

Redcliff is an independent municipality located in [Cypress County](#).

**Elevation:** 752 metres (2,747 ft.)

**Latitude:** 50 degrees, 4 minutes, 38 seconds

**Longitude:** 110 degrees, 47 minutes, 20 seconds

## Post Secondary Education

[Medicine Hat College](#) is a full-time college with university transfer programs as well as diploma and degree programs. The College is only a ten minute drive from Redcliff.

The [Corporate Education Network \(CENetwork\)](#) is a comprehensive website that promotes a "on-stop-shop" of training services available to individuals and businesses in Southeast Alberta. Users of the CENetwork can research, compare and register for training courses, events, and facilities, all in one centralized online location.

This initiative was made possible through a partnership with Entre-Corp Business Development Centre, Medicine Hat College, Palliser Economic Partnership and the Office of Learning Technologies - Human Resources and Social Development.

## Taxation

	Residential/Farmland	Non-Residential
<b>2005</b>		
Municipal Tax Rate	6.4310	14.3880
Education - Alberta School Foundation Fund Tax Rate	3.7710	6.4310
Seniors Lodge Accommodation Tax Rate	0.0870	0.0870

Tax Rates [2005]

Residential - Public 10.289

Non-Residential - Public 20.497

Farmland and Farm Building - 19.319



# Transportation

## Air Services

The Medicine Hat Municipal Airport provides commercial and air freight services for Redcliff residents. Other services include one charter firm, bonded warehouse facilities and aircraft refueling services.

## Rail Services

Redcliff is served by a Canadian Pacific Railway main line from Medicine Hat.

## Highways

Redcliff is located on the Trans-Canada Highway [east-west], which provides direct connections to all major urban centres in Canada.

## Trucking Firms

Redcliff is served by trucking firms offering local, provincial, national and international intermodal freight services.

## Bus Services

**Greyhound Bus Lines** operate regular daily scheduled service to all Canadian cities from Medicine Hat.

## Couriers and Taxis

Several courier and taxi companies serve Redcliff from Medicine Hat.

# Utilities

## Electrical Power

City of Medicine Hat Electrical Department

Medicine Hat, Alberta

Tel: (403) 526-5971

Electrical Cable Locates: (403) 529-8252

24 Hour Emergency: (403) 529-8260

Electric Account Inquiries: (403) 529-8111

## Natural Gas

City of Medicine Hat Gas Department

Medicine Hat, Alberta

Tel: (403) 529-8190

Gas Line Locates: (403) 529-8250

24 Hour Emergency: (403) 529-8191

Residential Servicing: (403) 529-8294

## Telephone

Telus Communications Inc.

Medicine Hat, Alberta

Tel: (403) 310-4248

## Cable Television

Monarch Cablesystems Ltd.

Medicine Hat, Alberta

Tel: (403) 527-5586

## Water Supply

The Town of Redcliff administers the water supply. The source of water is the South Saskatchewan River. The reservoir capacity, measured in treated substance, is 2,250,000 gallons. The pumping capacity is 2 million gallons per day.

## Waste Management

Sewage treatment is provided by the Medicine Hat system, which is a lagoon system consisting of 4 anaerobic and 1 aerobic pond.

Residential garbage is collected once weekly, commercial garbage is collected twice weekly, and industrial garbage is collected weekly. Commercial bin type disposal is available.

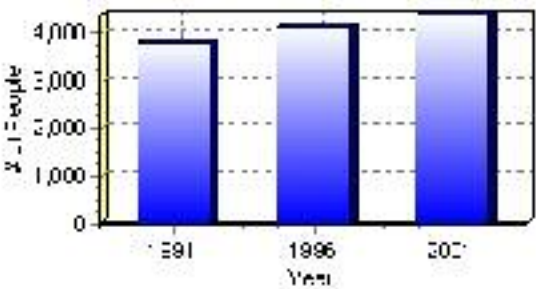
# Population

## Total Population

Population 2004*	4,372
Population 2003*	4,372
Population 2002*	4,372
Population 2001**	4,375
Population 2000*	4,104
Population 1996**	4,104
Population 1991**	3,768
Population % change 1991-1996	8.19%
Population % change 1996-2001	6.13%

\* Source: Official Population List, Alberta Municipal Affairs  
\*\* Source: Statistics Canada 1991, 1996, & 2001 Census

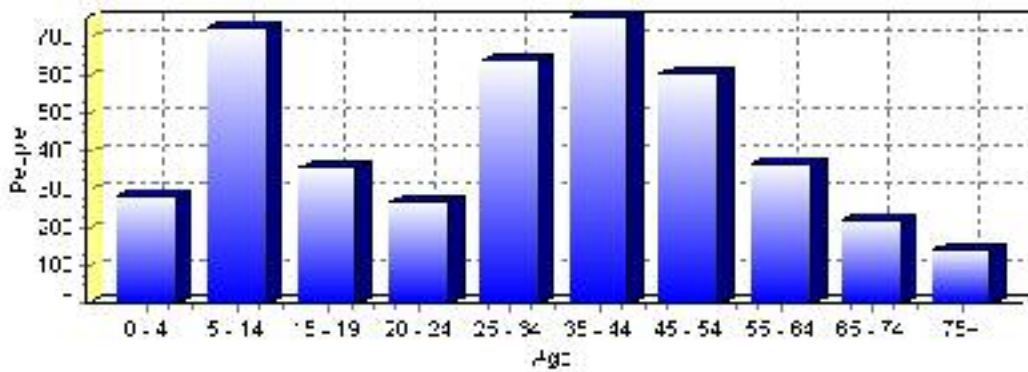
## Total Population 1991-2001



Population by Age and Gender	1996 Male	1996 Female	1996 Total	2001 Male	2001 Female	2001 Total
Age 0 - 4	150	165	315	150	135	285
Age 5 - 14	405	365	770	355	375	730
Age 15 - 19	140	150	290	195	165	360
Age 20 - 24	115	115	230	135	135	270
Age 25 - 34	330	350	680	315	325	640
Age 35 - 44	400	335	735	385	370	755
Age 45 - 54	215	235	450	305	300	605
Age 55 - 64	155	130	285	195	175	370
Age 65 - 74	105	115	220	110	110	220
Age 75 and older	45	80	125	55	90	145
Total All Persons	2,050	2,055	4,105	2,190	2,180	4,370

Source: Statistics Canada 1996 & 2001 Census (numbers may not add up due to rounding)

### Redcliff Population by Age Group (2001)

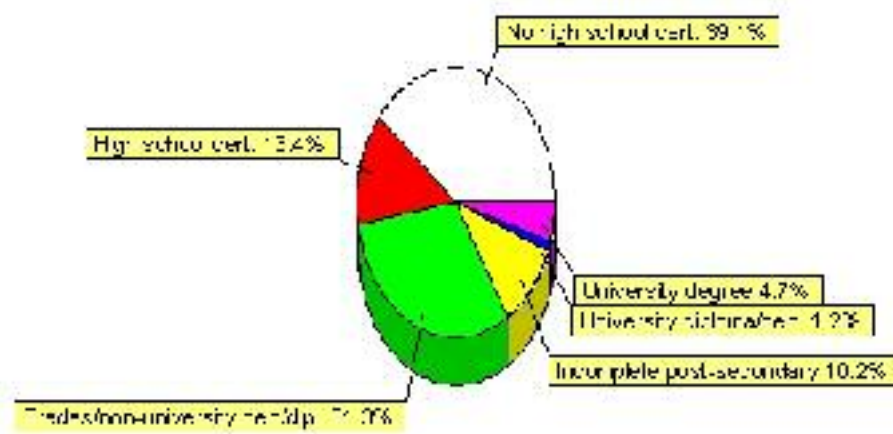


# Education Statistics

Highest level of schooling for Population 20yrs and older	2001	%
People without high school certificates	1,170	39.13%
People with high school certificates	400	13.38%
People with trades or non-university certificate or diploma	935	31.27%
People with post-secondary education (not completed)	305	10.20%
People with university diploma/certificate	35	1.17%
People with university degree	140	4.68%
Total Population 20 years and older	2,990	100.00%

Source: Statistics Canada 2001 Census (numbers may not add up due to rounding)

## Redcliff Highest Level of Schooling 2001



Population with Post Secondary Qualifications	1996	%	2001	%
Agriculture and biological sciences	60	6.28%	40	3.59%
Commerce, management and business administration	220	23.04%	245	21.97%
Educational, recreational and counseling services	65	6.81%	90	8.07%
Engineering and applied science tech. and trades	405	42.41%	425	38.12%
Engineering and applied sciences	10	1.05%	20	1.79%
Fine and applied arts	60	6.28%	50	4.48%
Health professionals, science and technologies	70	7.33%	140	12.56%
Humanities and related fields	25	2.62%	10	0.90%
Mathematics and physical sciences	0	0.00%	25	2.24%
Social sciences and related fields	45	4.71%	65	5.83%
Other and/or no specialization	0	0.00%	0	0.00%
Total people with post secondary qualifications	955	100.00%	1,115	100.00%
Females with post-secondary qualifications	410	42.93%	525	47.09%
Males with post-secondary qualifications	545	57.07%	590	52.91%

Source: Statistics Canada 1996 & 2001 Census (numbers may not add up due to rounding)

## Labour Force

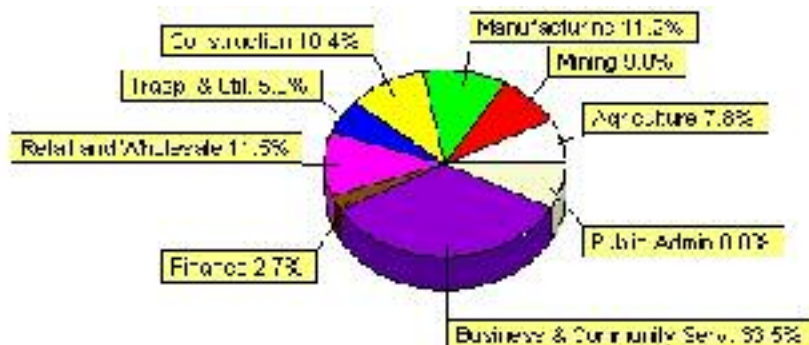
Labour force by activity	1996	2001
In the labour force, both sexes	2,100	2,455
Not in the labour force, both sexes	920	895
Total population 15 and over	3,025	3,350
Employed, both sexes	1,935	2,340
Unemployed, both sexes	160	120
Participation rate, both sexes	69.00%	73.00%
Unemployment rate, both sexes	7.00%	5.00%

Source: Statistics Canada 1996 & 2001 Census (numbers may not add up due to rounding)

Labour Force by Industry Division	1996	% of total	2001	% of total
Agriculture	110	5.30%	190	7.77%
Mining	140	6.75%	220	9.00%
Manufacturing	210	10.12%	275	11.25%
Construction	200	9.64%	255	10.43%
Transportation. & Utilities	150	7.23%	145	5.93%
Retail and Wholesale	450	21.69%	280	11.45%
Finance	45	2.17%	65	2.66%
Business & Community Services	600	28.92%	820	33.54%
Public Administration	180	8.67%	195	7.98%
Total All Industries	2,075	100.00%	2,445	100.00%

Source: Statistics Canada 1996 & 2001 Census (numbers may not add up due to rounding)

### Redcliff Labour Force By Industry - 2001



Labour Force by Major Occupational Groups	1996	%	2001	%
Management occupations	190	9.16%	165	6.75%
Business, Finances and administrative occupations	255	12.29%	335	13.70%
Natural and applied sciences and related occupations	55	2.65%	80	3.27%
Health occupations	60	2.89%	120	4.91%
Occupations in social science; education; government and religion	45	2.17%	40	1.64%
Occupations in art; culture; recreation and sport	20	0.96%	25	1.02%

Sales and service occupations	665	32.05%	555	22.70%
Trades; transport; equipment operators and related occupations	385	18.55%	575	23.52%
Occupations unique to primary industry	240	11.57%	315	12.88%
Occupations unique to processing; manufacturing and utilities	160	7.71%	240	9.82%
Occupations not elsewhere classified	20	0.96%	10	0.41%
Total - All Occupations (major groups)	2,075	100.00%	2,445	100.00%
Females - All Occupations	940	45.30%	1,090	44.58%
Males - All Occupations	1,135	54.70%	1,355	55.42%

Source: Statistics Canada 1996 & 2001 Census (numbers may not add up due to rounding)

---

## Income

<b>Family Income (Number of Families)</b>	<b>1996</b>	<b>%</b>	<b>2001</b>	<b>%</b>
less than \$19,999	95	9.09%	120	11.88%
\$20,000 - \$39,999	385	36.84%	310	30.69%
\$40,000 - \$59,999	325	31.10%	340	33.66%
\$60,000 and over	240	22.97%	320	31.68%
Total number of families	1,045	100.00%	1,090	107.92%
Average family income	\$45,658		\$57,210	
Median family income	\$41,392		\$51,596	

Source: Statistics Canada 1996 & 2001 Census (numbers may not add up due to rounding)

<b>Household Income (Number of Households)</b>	<b>1996</b>	<b>%</b>	<b>2001</b>	<b>%</b>
less than \$19,999	285	20.07%	205	13.06%
\$20,000 - \$39,999	500	35.21%	390	24.84%
\$40,000 - \$59,999	365	25.70%	365	23.25%
\$60,000 and over	120	8.45%	615	39.17%
Total number of households	1,420	100.00%	1,570	100.00%
Average household income	\$40,812		\$55,798	
Median household income	\$36,931		\$49,061	

Source: Statistics Canada 1996 & 2001 Census (numbers may not add up due to rounding)

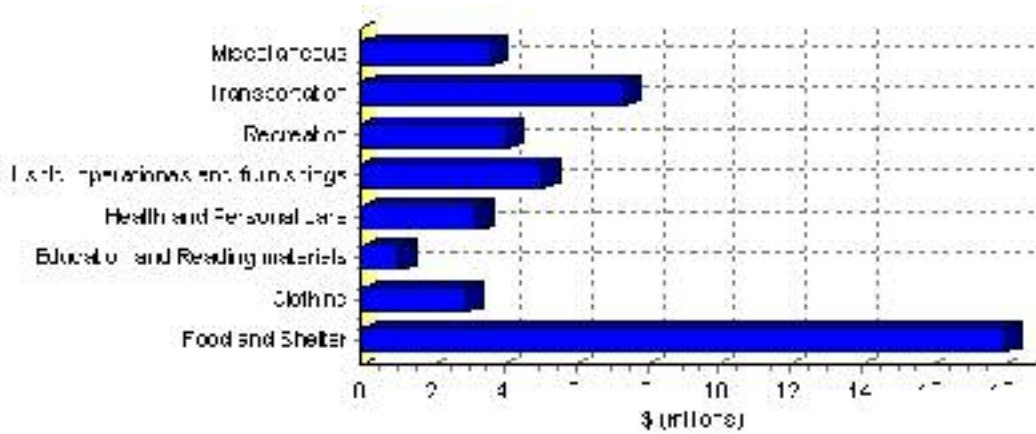


# Family Expenditure

Expenditure Category	1992	% of total	1996	% of total
Food and Shelter	\$14,590,750	36.95%	\$18,055,376	39.62%
Clothing	\$2,741,335	6.94%	\$2,970,321	6.52%
Education and Reading materials	\$851,925	2.16%	\$1,046,287	2.30%
Health and Personal care	\$2,467,375	6.25%	\$3,240,074	7.11%
Hshld. operations and furnishings	\$4,343,785	11.00%	\$5,086,166	11.16%
Recreation	\$3,239,810	8.20%	\$4,111,773	9.02%
Transportation	\$8,115,895	20.55%	\$7,413,377	16.27%
Miscellaneous	\$3,126,140	7.92%	\$3,643,716	8.00%
Total Current Consumption	\$39,487,225	100.00%	\$45,567,090	100.00%
Total # of Households	1,300		1,422	
Average Consumption per Household	\$30,375		\$32,044	

Source: Statistics Canada Family Expenditure Survey 1992 & 1996 (numbers may not add up due to rounding).

## Redcliff Family Expenditures (1996)

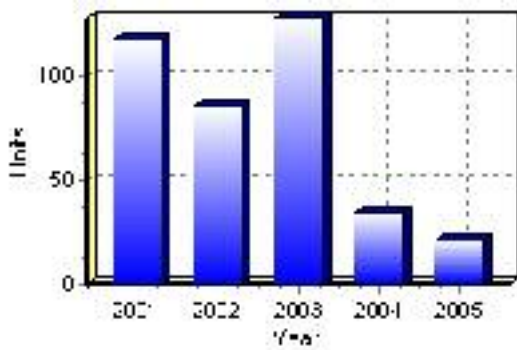


# Building Permits

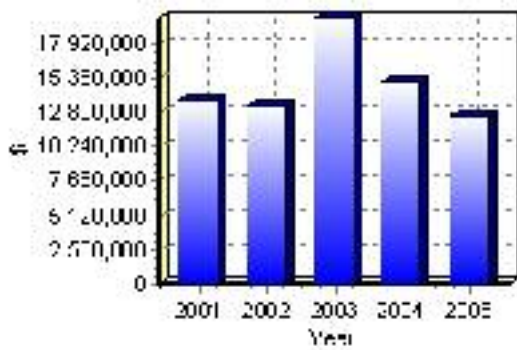
Total Building Permit Values	2001	2002	2003	2004	2005
Building Permits Value, Commercial	\$1,192,000	\$2,431,000	\$1,937,000	\$6,359,000	\$4,384,000
Building Permits Value, Industrial	\$2,001,000	\$1,670,000	\$2,596,000	\$2,438,000	\$3,336,000
Building Permits Value, Institutional	\$0	\$0	\$0	\$0	\$0
Building Permits Value, Residential	\$10,557,000	\$9,230,000	\$15,288,000	\$6,280,000	\$4,842,000
Building Permits Value, Total	\$13,750,000	\$13,331,000	\$19,821,000	\$15,077,000	\$12,562,000
Total Housing Starts	117	86	128	35	21

Source: Statistics Canada 2000-2004 Building Permits (numbers may not add up due to rounding)

## Total Housing Starts



## Value of Building Permits



## Dwellings

<b>Occupied Private Dwellings by Type</b>	<b>1996</b>	<b>% of total</b>	<b>2001</b>	<b>% of total</b>
Apartments	20	1.40%	55	3.50%
Detached Duplexes	0	0.00%	5	0.32%
Movable Dwellings	10	0.70%	0	0.00%
Other single attached house	0	0.00%	5	0.32%
Row and semi-detached house	110	7.72%	95	6.05%
Single-detached house	1,275	89.47%	1,405	89.49%
Total number of occupied private dwellings	1,425	100.00%	1,570	100.00%
Private dwellings, owned	1,180	82.81%	1,245	79.30%
Private Dwellings, rented	240	16.84%	330	21.02%

Source: Statistics Canada 1996 & 2001 Census (numbers may not add up due to rounding)

<b>Private Dwellings by Period of Construction</b>	<b># of Dwellings</b>	<b>% of total</b>
Period of construction, before 1946	170	10.83%
Period of construction, 1946 - 1960	210	13.38%
Period of construction, 1961 - 1970	180	11.46%
Period of construction, 1971 - 1980	595	37.90%
Period of construction, 1981 - 1990	175	11.15%
Period of construction, 1991 - 2001	240	15.29%
Total number of private dwellings constructed	1,570	100.00%

Source: Statistics Canada 2001 Census (numbers may not add up due to rounding)

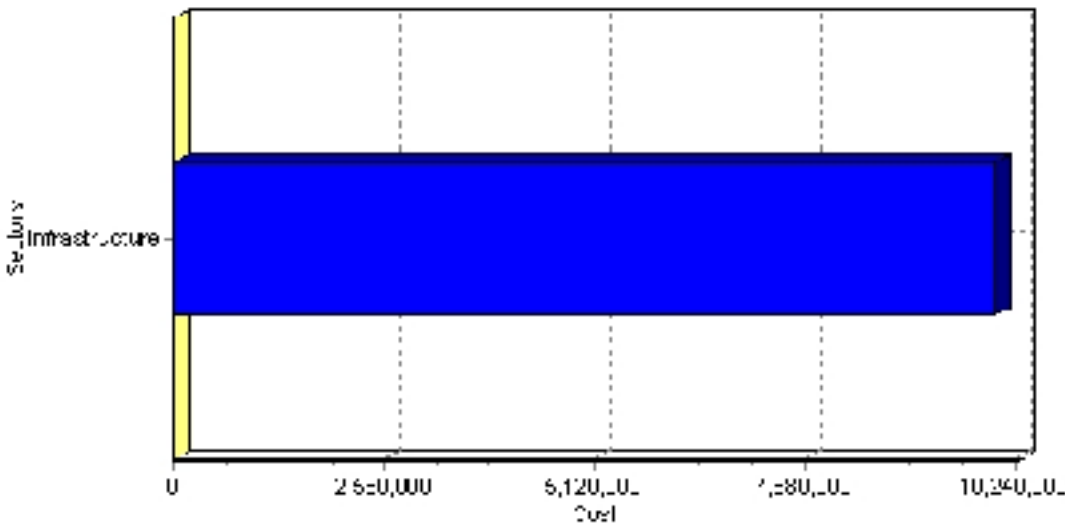
# Projects

## Summary of Projects in Redcliff as of September 2006

Project Sector	Number of Projects	Project Cost
Infrastructure	1	\$10,000,000
Total	1	\$10,000,000

This inventory lists projects in Alberta that have recently been completed, are under construction, or are proposed to start construction. Not all projects are listed due to reasons of confidentiality and/or due to information not being available at the time of printing. Project data is obtained from public information sources, where possible, this data has been verified with the project proponent/developer, users of the Inventory may wish to confirm project data with the proponent/developer. The inventory does not breakdown project expenditures by any given year. The cost of a project is the value of expenditures expected over all phases of project construction, which may span over two or more years. Cost of projects listed in the Inventory are estimated values only. Source: Alberta Economic Development, 2004.

## Value of Projects by Sector (as of September 2006)



Project Status	Number of Projects	Project Cost
Completed	1	\$10,000,000
Total	1	\$10,000,000

This inventory lists projects in Alberta that have recently been completed, are under construction, or are proposed to start construction. Not all projects are listed due to reasons of confidentiality and/or due to information not being available at the time of printing. Project data is obtained from public information sources, where possible, this data has been verified with the project proponent/developer, users of the Inventory may wish to confirm project data with the proponent/developer. The inventory does not breakdown project expenditures by any given year. The cost of a project is the value of expenditures expected over all phases of project construction, which may span over two or more years. Cost of projects listed in the Inventory are estimated values only. Source: Alberta Economic Development, 2004.

## Largest Projects in Redcliff as of September 2006

<b>Company Name</b>	<b>Project Description</b>	<b>Project Location</b>	<b>Project Cost</b>	<b>Construction Schedule</b>	<b>Status</b>
Town of Redcliff	Infrastructure Projects 2005	Redcliff	\$10,000,000	2005-2006	Completed

Disclaimer: Information in this profile has been provided from a variety of external sources. Although every effort has been made to ensure the accuracy, currency and reliability of the content and data, AlbertaFirst.com Ltd. accepts no responsibility in this regard.

© AlbertaFirst.com Ltd., 2006.