

Barnwell

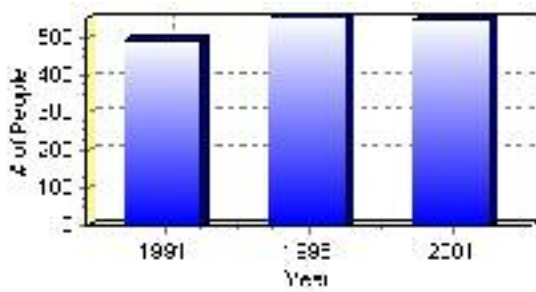
Population

Total Population

Population 2004*	548
Population 2003*	548
Population 2002*	548
Population 2001**	550
Population 2000*	552
Population 1996**	552
Population 1991**	492
Population % change 1991-1996	10.87%
Population % change 1996-2001	-0.73%

* Source: Official Population List, Alberta Municipal Affairs
** Source: Statistics Canada 1991, 1996, & 2001 Census

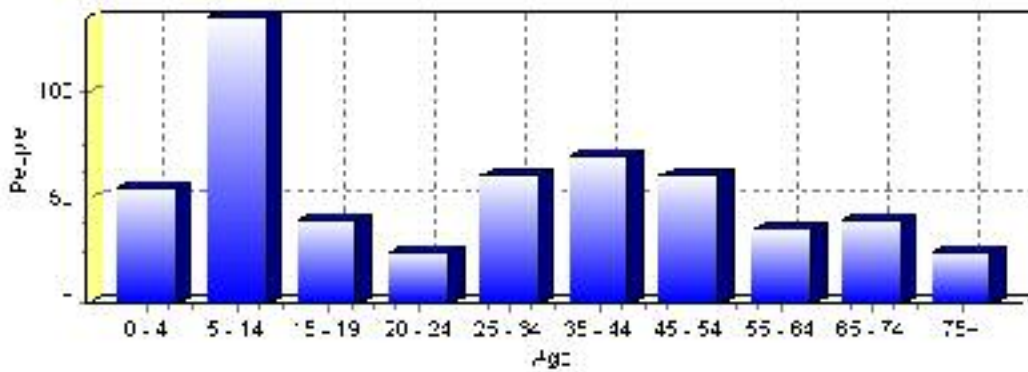
Total Population 1991-2001



Population by Age and Gender	1996 Male	1996 Female	1996 Total	2001 Male	2001 Female	2001 Total
Age 0 - 4	25	20	45	25	30	55
Age 5 - 14	70	65	135	75	60	135
Age 15 - 19	40	35	75	25	15	40
Age 20 - 24	30	20	50	15	10	25
Age 25 - 34	40	30	70	30	30	60
Age 35 - 44	35	40	75	35	35	70
Age 45 - 54	20	25	45	30	30	60
Age 55 - 64	15	20	35	20	15	35
Age 65 - 74	10	15	25	15	25	40
Age 75 and older	5	5	10	15	10	25
Total All Persons	290	265	555	285	260	545

Source: Statistics Canada 1996 & 2001 Census (numbers may not add up due to rounding)

Barnwell Population by Age Group (2001)

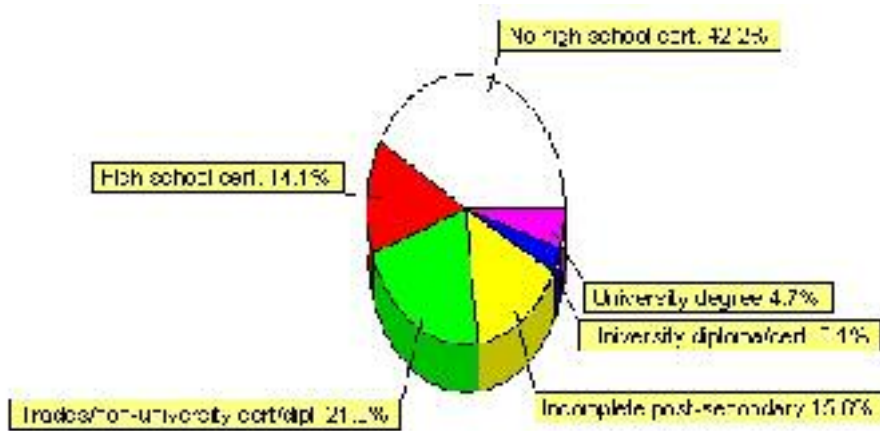


Education Statistics

Highest level of schooling for Population 20yrs and older	2001	%
People without high school certificates	135	42.19%
People with high school certificates	45	14.06%
People with trades or non-university certificate or diploma	70	21.88%
People with post-secondary education (not completed)	50	15.63%
People with university diploma/certificate	10	3.13%
People with university degree	15	4.69%
Total Population 20 years and older	320	100.00%

Source: Statistics Canada 2001 Census (numbers may not add up due to rounding)

Barnwell Highest Level of Schooling 2001



Population with Post Secondary Qualifications	1996	%	2001	%
Agriculture and biological sciences	10	7.14%	0	0.00%
Commerce, management and business administration	30	21.43%	10	10.00%
Educational, recreational and counseling services	20	14.29%	15	15.00%
Engineering and applied science tech. and trades	35	25.00%	15	15.00%
Engineering and applied sciences	0	0.00%	0	0.00%
Fine and applied arts	25	17.86%	10	10.00%
Health professionals, science and technologies	20	14.29%	35	35.00%
Humanities and related fields	10	7.14%	0	0.00%
Mathematics and physical sciences	0	0.00%	0	0.00%
Social sciences and related fields	10	7.14%	0	0.00%
Other and/or no specialization	0	0.00%	0	0.00%
Total people with post secondary qualifications	140	100.00%	100	100.00%
Females with post-secondary qualifications	60	42.86%	70	70.00%
Males with post-secondary qualifications	80	57.14%	30	30.00%

Source: Statistics Canada 1996 & 2001 Census (numbers may not add up due to rounding)

Labour Force

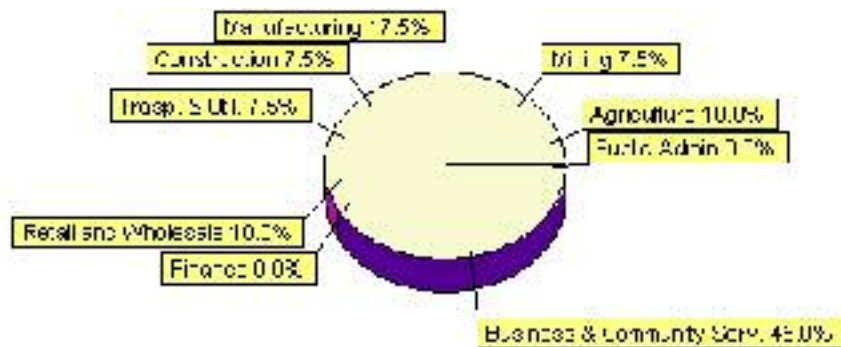
Labour force by activity	1996	2001
In the labour force, both sexes	240	210
Not in the labour force, both sexes	130	145
Total population 15 and over	370	360
Employed, both sexes	235	195
Unemployed, both sexes	0	15
Participation rate, both sexes	64.00%	58.00%
Unemployment rate, both sexes	0.00%	7.00%

Source: Statistics Canada 1996 & 2001 Census (numbers may not add up due to rounding)

Labour Force by Industry Division	1996	% of total	2001	% of total
Agriculture	40	16.67%	20	10.00%
Mining	0	0.00%	15	7.50%
Manufacturing	25	10.42%	35	17.50%
Construction	15	6.25%	15	7.50%
Transportation. & Utilities	0	0.00%	15	7.50%
Retail and Wholesale	30	12.50%	20	10.00%
Finance	10	4.17%	0	0.00%
Business & Community Services	105	43.75%	90	45.00%
Public Administration	10	4.17%	0	0.00%
Total All Industries	240	100.00%	200	100.00%

Source: Statistics Canada 1996 & 2001 Census (numbers may not add up due to rounding)

Barnwell Labour Force By Industry - 2001



Labour Force by Major Occupational Groups	1996	%	2001	%
Management occupations	15	6.25%	0	0.00%
Business, Finances and administrative occupations	30	12.50%	20	9.76%
Natural and applied sciences and related occupations	0	0.00%	0	0.00%
Health occupations	0	0.00%	20	9.76%
Occupations in social science; education; government and religion	20	8.33%	10	4.88%
Occupations in art; culture; recreation and sport	10	4.17%	0	0.00%

Sales and service occupations	95	39.58%	40	19.51%
Trades; transport; equipment operators and related occupations	45	18.75%	60	29.27%
Occupations unique to primary industry	30	12.50%	25	12.20%
Occupations unique to processing; manufacturing and utilities	0	0.00%	30	14.63%
Occupations not elsewhere classified	0	0.00%	10	4.88%
Total - All Occupations (major groups)	240	100.00%	205	100.00%
Females - All Occupations	105	43.75%	95	46.34%
Males - All Occupations	135	56.25%	110	53.66%

Source: Statistics Canada 1996 & 2001 Census (numbers may not add up due to rounding)

Income

Family Income (Number of Families)	1996	%	2001	%
less than \$19,999	15	12.50%	25	21.74%
\$20,000 - \$39,999	45	37.50%	40	34.78%
\$40,000 - \$59,999	40	33.33%	25	21.74%
\$60,000 and over	20	16.67%	10	8.70%
Total number of families	120	100.00%	100	86.96%
Average family income	\$44,499		\$44,091	
Median family income	\$43,554		\$43,889	

Source: Statistics Canada 1996 & 2001 Census (numbers may not add up due to rounding)

Household Income (Number of Households)	1996	%	2001	%
less than \$19,999	35	24.14%	25	15.15%
\$20,000 - \$39,999	50	34.48%	40	24.24%
\$40,000 - \$59,999	35	24.14%	45	27.27%
\$60,000 and over	0	0.00%	40	24.24%
Total number of households	145	100.00%	165	100.00%
Average household income	\$40,103		\$42,042	
Median household income	\$38,171		\$40,190	

Source: Statistics Canada 1996 & 2001 Census (numbers may not add up due to rounding)

Dwellings

Occupied Private Dwellings by Type	1996	% of total	2001	% of total
Apartments	0	0.00%	0	0.00%
Detached Duplexes	0	0.00%	0	0.00%
Movable Dwellings	0	0.00%	10	6.06%
Other single attached house	0	0.00%	0	0.00%
Row and semi-detached house	10	6.90%	10	6.06%
Single-detached house	135	93.10%	135	81.82%
Total number of occupied private dwellings	145	100.00%	165	100.00%
Private dwellings, owned	120	82.76%	125	75.76%
Private Dwellings, rented	25	17.24%	35	21.21%

Source: Statistics Canada 1996 & 2001 Census (numbers may not add up due to rounding)

Private Dwellings by Period of Construction	# of Dwellings	% of total
Period of construction, before 1946	40	23.53%
Period of construction, 1946 - 1960	20	11.76%
Period of construction, 1961 - 1970	15	8.82%
Period of construction, 1971 - 1980	25	14.71%
Period of construction, 1981 - 1990	45	26.47%
Period of construction, 1991 - 2001	25	14.71%
Total number of private dwellings constructed	170	100.00%

Source: Statistics Canada 2001 Census (numbers may not add up due to rounding)

Disclaimer: Information in this profile has been provided from a variety of external sources. Although every effort has been made to ensure the accuracy, currency and reliability of the content and data, AlbertaFirst.com Ltd. accepts no responsibility in this regard.

© AlbertaFirst.com Ltd., 2006.