

# Chestermere

[www.town.chestermere.com](http://www.town.chestermere.com)

## Welcome

### Welcome to our Community



On behalf of the Town of Chestermere and its residents, I wish to take this opportunity to extend you an invitation to visit our community.

Chestermere offers you a lake community lifestyle along with a small town atmosphere. Situated in close proximity to Calgary, Chestermere is the ideal location for you to establish your home and raise a family. The tranquility of our lake community and its recreational opportunities combine to offer you a very unique lifestyle. We hope the information contained within this profile is useful.

If you require additional information on Chestermere, please contact our municipal representative from the "Key Contacts" section of the profile.

Sincerely,  
Dave Mikkelsen  
Mayor

## Area Overview

The Town of Chestermere's beginning was in approximately 1884 when men of vision recognized the value of the body of water as a source for an irrigation system. These early pioneers had visions of what irrigation would mean to the lives of the people. The building of the headwork's of an irrigation water supply was the birth of Chestermere Lake.

Chestermere was incorporated as a town on March 1, 1993. The Town has grown at a rate of 20% or more over the past 5 years with a population of 7,904 in 2005. Chestermere's attractions include a 750 acre lake and 18 hole golf course as well as a number of recreational opportunities. These are matched only by the prairie sunrises and sunsets.

### **ALBERTA, THE BEST PLACE TO WORK, LIVE AND DO BUSINESS**

The province of Alberta is a leader in the Canadian economy. Alberta has had the fastest growing economy in Canada over the past two decades, with real GDP growth averaging 3.7 percent per year. Highlighting Alberta's success in the past year is:

- Over \$73.2 billion in international exports of goods and services (2004)
- Manufacturing shipments of \$52.6 billion (2004)
- Creation of 40,000 new jobs in 2004 and 433,900 between 1994 and 2004
- Over \$103 billion in major capital projects are proposed, announced, under construction or recently completed (2004)

Source: [Alberta Economic Development](#)

### **Alberta's Positive Business Climate**

- The lowest overall taxes in Canada
- No provincial sales tax



- No general capital or payroll taxes prevalent in other provinces and U.S. states
- A highly entrepreneurial and competitive business community
- A fiscally responsible government that has eliminated its provincial debt, demonstrating to investors the business-like attitude of the government
- A highly skilled, educated and motivated workforce that is the most productive in Canada. Source: [Alberta Economic Development](#)

## Climate

### AVERAGE TEMPERATURES

#### January

Maximum temperature = -2.8 Celsius

Minimum temperature = -15.1 Celsius

#### July

Maximum temperature = 22.9 Celsius

Minimum temperature = 9.4 Celsius

Annual precipitation = 412.6 mm

Days of sunshine = 332.9

Winds speed = 14.8 km/h W and NW

Source: [Environment Canada](#)

To view Chestermere's current temperature click button.

Chestermere, AB

## Community Services

### BUSINESS ORGANIZATIONS

#### Wild Rose Economic Development Corporation

Box 2159

2nd Floor, 203 3rd Avenue

Hilton Plaza

Strathmore, Alberta T1P 1K2

1-888-881-9675

Tel: (403) 934-6488

Fax:(403) 934-6492

Email: [wildrose@wildrose.ab.ca](mailto:wildrose@wildrose.ab.ca)

Website: [www.gowildrose.com](http://www.gowildrose.com)

Services include: career center for employers and employees, small business assistance, financing and referral.

[Alberta Human Resources and Employment](#) is a provincial department that focuses on people skills and the workplace. They provide a broad range of service to both employees and employers.

[Human Resources & Skills Development Canada](#) is a federal department that provides a broad range of services for employees and employers.

#### Chestermere Chamber of Commerce

Mission Statement: To develop a strong and sound business community in Chestermere through integrity, fellowship and commitment.

- President - Steve Jeffrey, Virtual IT Deployment/Chestermere Anchor, (403) 207-3835
- Treasurer - Elaine Campbell, Totally Functional Concepts (403) 248-0490
- Secretary - Barb Jackson, Pier Communications Inc., (403) 248-5524

Networking, guest speakers and opportunities to introduce your business or service to the business community are just some of the advantages of membership.

We offer a voice for business in Chestermere.

## **Municipal**

### **Town of Chestermere**

105 Marina Road  
Main Office number (403) 207-7050  
Main Office Fax (403) 569-0512  
Email: [town@chestermere.com](mailto:town@chestermere.com)  
Website: [Town of Chestermere](http://Town of Chestermere)  
Bylaws ~ Licensing ~ Utilities ~ Permits ~ Town Minutes Planning & Development ~ Taxes

### **M.D. of Rocky View**

(403) 230-1401  
Chestermere is located within the M.D. of Rocky View, in Division 5.

# **Community Lifestyle**

## **BUSINESS ORGANIZATIONS**

### **Wild Rose Economic Development Corporation**

Box 2159  
2nd Floor, 203 3rd Avenue  
Hilton Plaza  
Strathmore, Alberta T1P 1K2  
1-888-881-9675  
Tel: (403) 934-6488  
Fax: (403) 934-6492  
Email: [wildrose@wildrose.ab.ca](mailto:wildrose@wildrose.ab.ca)  
Website: [www.gowildrose.com](http://www.gowildrose.com)

Services include: career center for employers and employees, small business assistance, financing and referral.

[Alberta Human Resources and Employment](#) is a provincial department that focuses on people skills and the workplace. They provide a broad range of service to both employees and employers.

[Human Resources & Skills Development Canada](#) is a federal department that provides a broad range of services for employees and employers.

### **Chestermere Chamber of Commerce**

Mission Statement: To develop a strong and sound business community in Chestermere through integrity, fellowship and commitment.

- President - Steve Jeffrey, Virtual IT Deployment/Chestermere Anchor, (403) 207-3835
- Treasurer - Elaine Campbell, Totally Functional Concepts (403) 248-0490
- Secretary - Barb Jackson, Pier Communications Inc., (403) 248-5524

Networking, guest speakers and opportunities to introduce your business or service to the business community are just some of the advantages of membership.

We offer a voice for business in Chestermere.

## **Municipal**

### **Town of Chestermere**

105 Marina Road

Main Office number (403) 207-7050

Main Office Fax (403) 569-0512

Email: [town@chestermere.com](mailto:town@chestermere.com)

Website: [Town of Chestermere](http://Town of Chestermere)

Bylaws ~ Licensing ~ Utilities ~ Permits ~ Town Minutes Planning & Development ~ Taxes

### **M.D. of Rocky View**

(403) 230-1401

Chestermere is located within the M.D. of Rocky View, in Division 5.

## **Economic Base**

The economic base of the community is one of residential development, offering an alternative lifestyle to the City of Calgary.

### **CONSTRUCTION**

- Growth in Chestermere and the Calgary Region has led to the development of a prospering construction industry.
- The construction industry accounts for a large percent of Chestermere's business community. This ranges from design, specialty trades, private contractors and development companies.
- Information on builders and building statistics can be found by visiting [Chestermere Statistics and Facts](#).

### **RETAIL & SERVICES**

#### **Chestermere Station**

Conveniently located just south of the Waterside, Chestermere Station includes a Safeway, bank, gas bar, video store, restaurants, wellness centre and much more.

**Chestermere Towne Square** In Chestermere Towne Square you can find restaurants, a gas bar, salon & spa, postal services, chiropractic services, coffee shop, video store and financial services.

#### **Chestermere Plaza**

More shops and services are available at Chestermere Plaza which has a liquor store, gas bar, car wash, café, restaurant, pub, hair salon, dance academy, barber, tanning salon, driving school and women's fitness.

### **CHESTERMERE BUSINESS DIRECTORY**

The Town of Chestermere does not have a large industrial base due to the proximity to Calgary. The Town policy supports cottage industries that do not impact on the lifestyle.

A complete list of Chestermere's Business Directory along with their contacts can be viewed by entering [here](#).

## FINANCIAL INSTITUTIONS

- Scotia Bank
- TD Canada Trust

## Economic Facts



## DEMOGRAPHICS

Chestermere has a diverse population and reliable labor force, making for consistently strong local growth trends.

The population of Chestermere is 9481

- % of Population under 65 ~ 7478 ~ 95%
- % of Population under 35 ~ 4065 ~ 51%
- % of Population under 20 ~ 2545 ~ 32%
- The projected population for 2006 is >10,000  
Source: 2006 Chestermere ED Stats

## PROPERTY VALUE ESTIMATES

- **Lot Only** (approx)

Residential -\$75,000 to \$110,000

## WORKERS COMPENSATION

Average cost per \$100 payroll in Manufacturing: \$3-\$4

Average cost per \$100 payroll in Office Work: \$.40

Maximum weekly benefit \$1,176.92

For additional details on the program see: [Workers Compensation Board](#)

## EMPLOYMENT INSURANCE

55% of your average insurable earnings to a maximum of \$413 per week.

For additional information on the program see: [Employment Insurance Information for Employers](#)

## RESEARCH BASE

Being a close neighbor of the City of Calgary, companies located in Chestermere have access to a broad range of research facilities located in an around the City. For additional information on the following research facilities, simply click on the name to access the link.

- [Alberta Research Council](#)
- [Calgary Technologies Inc.](#)
- [Edmonton Economic Development Corporation](#)
- [Food Processing Development Centre](#)
- [TRLabs](#)
- [WurcNet](#)

#### **FURTHER IN-DEPTH INFORMATION**

- [Municipal Profiles developed by Alberta's Ministry of Municipal Affairs](#)
- [Alberta - A Wealth of Opportunity developed by Alberta Economic Development](#)
- [Alberta Economic Highlights developed by Alberta Economic Development](#)
- [Alberta Economic Outlook developed by Alberta Economic Development](#)
- [Alberta Export and Trade developed by Alberta Economic Development](#)
- [Tourism Reports developed by Alberta Economic Development](#)
- [Alberta Finance Statistics also contains much information which may be useful.](#)

## **Education**

Chestermere is part of the Rocky View School Division #41 headquartered in Calgary (telephone: 403-291-6313) and also the Calgary Catholic School District (telephone: 403-298-1411)

Chestermere Education choices include:

### **PUBLIC**

#### **Elementary School**

students are bussed to either:

- [Prairie Waters Elementary School](#)



201 Invermere Drive  
Chestermere, Alberta T1Z 1M6  
Phone: 403-285-6969  
Grades: K-4

- [Indus Elementary a few miles south of Chestermere](#)  
7 Indus Court - Box 10, Site 9 RR#7

Indus, Alberta T2P 2G6  
Phone: 403- 936-5855  
Grades: K- 5

- Langdon School just east of Chestermere 17 Bander Ave. N.W.  
Langdon, AB

Phone: 403-936-4579 fax:403-936-4589  
Grades: Elementary, K-8, Middle

**Middle School** Students are bussed to:

- Chestermere Lake Middle School



128 West Lakeview Dr.  
Chestermere, Alberta T1X 1J1  
Phone: 403-273-1343  
Grades: 5-8

**High School** students are bussed to:

- Chestermere High School



Located 5 kms away.  
Mailing Address  
RR 7 Calgary AB T2P 2G7  
Phone: 403- 272-8868  
Grades:9-12

## **CATHOLIC**

- St. Gabriel the Archangel School 197 Invermere Drive  
Chestermere, AB T1X 1M7  
Phone: 403-590-9657  
Grades: K - 10

## **PRIVATE**

- Prince of Peace Lutheran School  
243209 Garden Road NE  
Calgary, AB, T1X 1E1  
Phone:403- 285-2288

## **PRE SCHOOL/PLAYSCHOOL**

- Chestermere Community Playschool  
Phone: 403-273-9208
- Little Acorns Fine Arts Pre School

Phone: 403-293-0820

## **CONTINUING EDUCATION**

- Rocky View Adult Education  
Phone: 403-936-5632

## **DAYCARE/NURSERY**

- Community Recreation Centre
  - Loving Start Daycare
- 

In 2002/2003 Alberta spent \$8,800 to education a student and the student to teacher ratio was just under 18.

Source: Culture, Tourism and Centre for Education Statistics, Summary Public School Indicators for the Provinces and Territories, 1996-97 – 2002-03 (Statistics Canada)

# **Emergency Services**

## **FIRE PROTECTION**

### **Chestermere Fire & Rescue**

The Chestermere Fire & Rescue Department is a full-spectrum life safety agency protecting more than 9000 people who reside in this community east of Calgary.

Volunteer Fire Service of 46 personnel, with one pumper, a tanker truck and a rescue unit. The Town has back up service through a contract with the City of Calgary (Telephone: 403-272-1144).



## **POLICE SERVICES**

Town of Chestermere employs one Bylaw Enforcement Officer and has an RCMP Detachment manned by 6 RCMP members and 1 secretary (Telephone: 403-207-2818).

## **AMBULANCE SERVICES**

Chestermere is serviced by the City of Calgary Emergency Services under contract with the City of Calgary. Approximate response time is 12 minutes (Telephone: 403-261-4000).

Other Services Available:

### **Strathmore RCMP Victim Service Unit**



500 Westlake Road  
Strathmore, Alberta, T1P- 1M7  
Telephone: (403) 934-3968  
Fax: (403) 934-2860

To find out more information regarding this service

[click here](#)

## Health Care

Chestermere is serviced by the [Calgary Regional Health Authority](#) with medical and dental professionals in Chestermere and through clinics in Calgary.

Hospital care is available 5-15 minutes from Chestermere at any one of Calgary's five hospitals:



- Peter Lougheed Centre
  - Foothills Medical Centre
  - Rockyview General Hospital
  - Alberta Children's Hospital
- 
- South Calgary Health Centre
- 
- Chestermere Dental Center  
(403) 235-6208  
Bay C 124 East Chestermere Dr.  
Chestermere, Alberta T1X 1A1

## Key Contacts for Business Development

### Municipal

#### Town of Chestermere

105 Marina Road  
Chestermere, Alberta  
T1X 1V7br>(403) 207-7050 phone  
(403) 569-0512 fax  
Email: rona@chestermere.com

**Mayor** Dave Mikkelsen  
Email: davem@autism.ca

Judy Parry Acting Chief Administrative Officer  
(403) 207-7071 phone  
Email: jparry@town.chestermere.com

Craig Lawrence  
Development Officer  
(403) 207-7069 phone  
Email:clawrence@chestermere.com

**Wild Rose Economic Development Corporation**

Box 2159  
2nd Floor, 203 3rd Avenue  
Hilton Plaza  
Strathmore, Alberta T1P 1K2  
1-888-881-9675 toll free  
(403) 934-6488 phone  
(403) 934-6492 fax  
Email: wildrose@wildrose.ab.ca  
Website: www.gowildrose.com

**Provincial** (Updated May 2006)

Walter Valentini  
Regional Manager  
Alberta Economic Development  
#300, 639 - 5 Avenue, SW  
Calgary, Alberta T2P 0M9  
(403) 297-8920 phone  
(403) 297-6168 fax  
E-Mail: walter.valentini@gov.ab.ca  
E-Mail: dianne.fitzsimmons@gov.ab.ca



Carol Haley  
Member of the Legislative Assembly [MLA]  
Airdrie-Rocky View Constituency  
Constituency Office Box 5257 209 Bowers Street Airdrie T4B 2B3 Phone: (403) 948-8741 Fax: (403) 948-8744  
airdrie.chestermere@assembly.ab.ca Legislature Office #128 Legislature Building 10800 - 97 Avenue Edmonton T5K 2B6 Phone:  
(780) 415-0975 Fax: (780) 415-9450 **Federal**(Updated May 2006)

Kevin Sorenson  
Member of Parliament [MP]  
Crowfoot Constituency  
Parliamentary Address House of Commons Ottawa, Ontario K1A 0A6 Telephone: (613) 947-4608 Fax: (613) 947-4611 E-Mail:  
Sorenson.K@parl.gc.ca Constituency Address 4945 - 50th Street Camrose, Alberta T4V 1P9 Telephone: (780) 608-4600 1-800-  
665-4358 Fax: (780) 608-4603 TTY: E-Mail:

## Location

### HIGHWAY LOCATION

Chestermere is five (5) Km. from the City of Calgary.

The Town of Chestermere is adjacent to the TransCanada Highway, which is Alberta's major east-west artery. It is also served by the 1A Highway, locally known as 17th Avenue SE, which enables one to arrive in downtown Calgary within 20 minutes from Chestermere. This route also connects to the TransCanada Highway.

## LONGITUDE & LATITUDE

Longitude - 113 degrees 49'

Latitude - 51 degrees 1'



**Alberta Map**



**Town of Chestermere Location**

## PROXIMITY TO OTHER LOCATIONS

<b>Driving Distance from Chestermere</b>	<b>km</b>	<b>miles</b>	<b>Time Required</b>
Calgary (city centre)	18	11	24 minutes
Calgary International Airport	25	15	25 minutes
Edmonton, Alberta	330	205	3 hours, 23 minutes
Vancouver, British Columbia	990	615	11 hours, 36 minutes
Toronto, Ontario	3389	2106	35 hours, 3 minutes
United States Border (Coutts, Alberta crossing)	331	206	3 hours, 36 minutes

It is important to note that time required is calculated based on 'ideal' traffic and weather conditions.

**\*\*Distance is measured from city centre to city centre\*\***

## Post Secondary Education

### Building Futures

The Town of Chestermere is just minutes away from world-class education facilities. Chestermere's proximity to Calgary allows students the opportunity to attend post-secondary institutions with minimal travel.

For information on Educational Opportunities in close proximity to Chestermere visit the school's corresponding website:



<b>Educational Facility</b>	<b>Location</b>	<b>Telephone</b>	<b>Web site</b>
University of Calgary	Calgary, AB	403-220-5110	<a href="http://www.ucalgary.ca">www.ucalgary.ca</a>
University of Lethbridge	Lethbridge, AB	403-320-5700 403-284-	<a href="http://www.uleth.ca">www.uleth.ca</a>

S.A.I.T.	Calgary, AB	7248	www.sait.ab.ca
Mount Royal College	Calgary, AB	403-240-6111	www.mtroyal.ab.ca
AB College of Art & Design	Calgary, AB	403-284-7600	www.acad.ab.ca
DeVry Canada	Calgary, AB	403-235-3450	www.devry.ca
Olds Agricultural College	Olds, AB	1-800-661-6537	www.oldscollege.ab.ca/
Red Deer College	Red Deer, AB	403- 342-3300	www.rdc.ab.ca/

**Other Educational Opportunities** within close proximity are:

Prairie Bible Institute offers a wide range of programs, including ministry, aviation, drama, wilderness leadership and music, to students from over 20 countries around the world. Students can earn a one-year certificate or a four-year degree.

Covenant Bible College is an eight-month program of Christian discipleship. The Strathmore campus is one of three campuses, with the other two located in Colorado and Ecuador.

Rosebud School of the Arts offers a unique blend of practical and theoretical training in the performing arts. In addition to the arts program, Rosebud provides apprenticeship programs in the hospitality industry.

## Taxation

2005 Tax Rates: Municipal Tax Rate - Residential 0.0040727 Education - AB School Foundation Fund 0.0022420 N.B. Tax rate multiplied by assessed property value equals property tax amount. For additional information regarding municipal taxation please contact Director of Finance, Town of Chestermere at 403-207-7055.

	<u>Residential/Farmland</u>	<u>Non-Residential</u>
<b>2005</b>		
Municipal Tax Rate	4.5778	4.5778
Education - Alberta School Foundation Fund Tax Rate	2.2420	4.2697

## Transportation

### HIGHWAYS

The Town of Chestermere is adjacent to the TransCanada Highway, which is Alberta's major east-west artery. It is also served by the 1A Highway, locally known as 17th Avenue SE, which enables one to arrive in downtown Calgary within 20 minutes from Chestermere. This route also connects to the TransCanada Highway.

For manufacturers and producers who need assistance to determine the most cost-



effective and efficient transportation method, AlbertaPORT provides a "virtual" gateway to assist with transportation logistics at Alberta-Canada.

## AIR SERVICES



The nearest commercial and air freight services are at **Calgary International Airport**

- 25 km drive from Chestermere.
- For a listing of non-stop passenger destinations visit [Passenger Non-stop Destinations](#)
- Provides a single hub location that specializes in a wide range of services including receiving, transferring, storing, and distributing air, rail and highway cargo both domestically

and internationally

- The airport offers 360 degree market penetration for International cargo & passenger carriers. 50 million people can be reached within a days travel

- Calgary is the 'ONLY' Canadian airport strategically located on the cross roads of the Trans Canada (East-West) and the CanaMex Highways (North-South) [Cargo Information](#)

## TRUCKING FIRMS

Chestermere is serviced from Calgary.

## BUS SERVICE

- [Cardinal Coach Lines](#) Motor coach commuter service between Chestermere and downtown Calgary operating Monday through Friday except holidays.

## POSTAL & COURIERS

Canada Post, Purolator, UPS and FedEx all provide delivery services to Chestermere. Canada Post fills a vital need in the region providing cost-effective and timely mail delivery. In its mission to provide innovative physical and electronic delivery solutions creating value for its customers, Canada Post works with its business customers to ensure their mail communication needs are achieved.

In 2001, [Canada Post](#) received an on-time, combined service performance score of 96.4% on properly prepared letter mail.

For more information on service in Chestermere contact:  
[Canada Post](#), [Purolator](#), [UPS](#) & [FedEx](#).



## Utilities

[Back to Directory](#)

**Electricity & Natural Gas** are deregulated in Alberta.

The Alberta government provides a Web site to provide information to assist consumers to choose the appropriate provider for their residence or business. To learn more about electrical or natural gas providers visit [Customer Choice](#).



Regulated Rate Providers for Community of Chestermere are:

**Electrical Power:** [FortisAlberta](#)  
[Epcor](#)

Natural Gas: [Direct Energy Services](#)  
[Atco](#)

## COMMUNICATIONS



**Cable Television:** [Shaw](#)

**Telephone:** [Telus Communications](#)

**Internet Service:** [Shaw](#)  
[Telus Communications](#)

Chestermere has access to:  
All the major radio stations from Calgary and Q91 radio station, which broadcasts from Drumheller.  
All TV stations broadcasting from Calgary.

## LOCAL/REGIONAL NEWSPAPERS

Name	Phone Number	Fax Number
<a href="#">The Chestermere Anchor</a>	(403) 207-3835	(403) 272-4405
<a href="#">The Calgary Sun</a>	(403) 410-1010	(403) 250-4180
<a href="#">The Calgary Herald</a>	(403) 235-7100	(403) 235-7379

## WATER, WASTE & SEWER MANAGEMENT

### Water Supply

The water supply is from the City of Calgary.



Alberta's commitment to water resources is three-fold: a safe, secure drinking water supply, healthy aquatic ecosystems, and reliable, quality water supplies for a sustainable economy.

[Alberta Environment](#) has developed water programs that include studying, monitoring and testing of water sources. They have established guidelines to ensure quality standards for the many uses of water, and programs to protect ecosystems and enforce regulations.

Alberta has the most stringent drinking water program in the country and was one of the first provinces to fully adopt the [Canadian Guidelines for Drinking Water Quality](#) as a minimum standard. Alberta Environment strives for continuous improvement in its program and works closely with [Alberta Health and Wellness](#) to ensure Albertans continue to enjoy high-quality drinking water.

### Waste Management

Sanitary Waste is pumped to the City of Calgary.

## **GARBAGE COLLECTION**

West side of the lake (including Westmere) - garbage collection is Monday morning.

East side of the lake - garbage collection is Tuesday morning.

Garbage collection takes place regardless if there is a holiday or not. The only exception is Christmas Day if it falls on a Monday or Tuesday.

## **RECYCLE**

There is weekly pick-up of household waste, and also recycling of cardboard. Both functions are contracted to Rocky Mountain Waste.

"Recycle Plus" is a major door to door blue box recycler in Town that will pick up glass, paper, tin, plastics and cardboard.

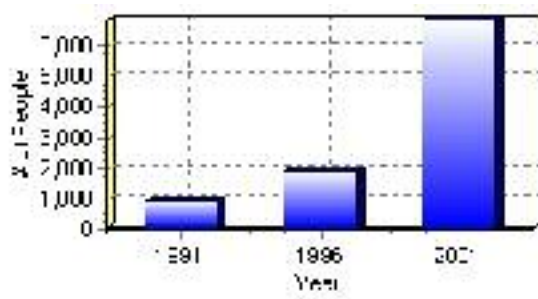
# Population

## Total Population

Population 2004*	6,861
Population 2003*	5,712
Population 2002*	3,742
Population 2001**	3,415
Population 2000*	3,558
Population 1996**	1,911
Population 1991**	918
Population % change 1991-1996	51.96%
Population % change 1996-2001	48.93%

\* Source: Official Population List, Alberta Municipal Affairs  
\*\* Source: Statistics Canada 1991, 1996, & 2001 Census

## Total Population 1991-2001

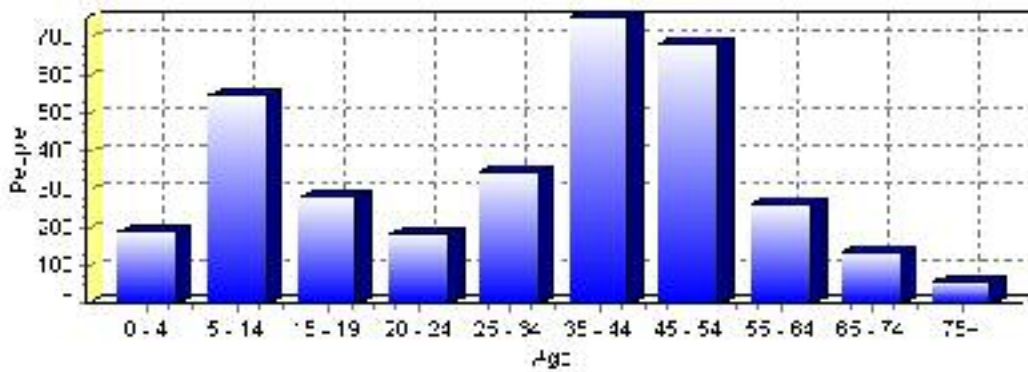




Population by Age and Gender	1996 Male	1996 Female	1996 Total	2001 Male	2001 Female	2001 Total
Age 0 - 4	50	50	100	90	100	190
Age 5 - 14	165	145	310	280	265	545
Age 15 - 19	95	75	170	125	155	280
Age 20 - 24	55	60	115	110	75	185
Age 25 - 34	85	90	175	150	195	345
Age 35 - 44	210	220	430	375	375	750
Age 45 - 54	185	185	370	350	330	680
Age 55 - 64	95	60	155	145	115	260
Age 65 - 74	35	45	80	80	55	135
Age 75 and older	20	15	35	30	30	60
Total All Persons	990	920	1,910	1,730	1,685	3,415

Source: Statistics Canada 1996 & 2001 Census (numbers may not add up due to rounding)

### Chestermere Population by Age Group (2001)

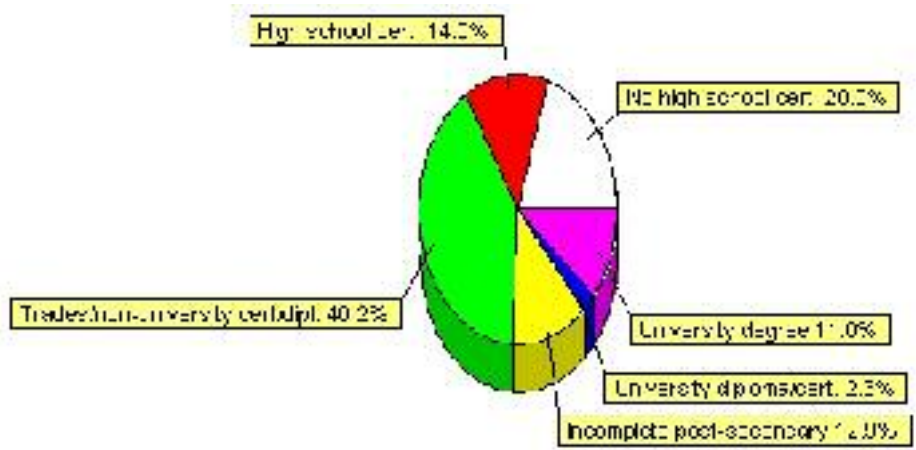


# Education Statistics

Highest level of schooling for Population 20yrs and older	2001	%
People without high school certificates	480	20.00%
People with high school certificates	335	13.96%
People with trades or non-university certificate or diploma	965	40.21%
People with post-secondary education (not completed)	310	12.92%
People with university diploma/certificate	55	2.29%
People with university degree	265	11.04%
Total Population 20 years and older	2,400	100.00%

Source: Statistics Canada 2001 Census (numbers may not add up due to rounding)

## Chestermere Highest Level of Schooling 2001



Population with Post Secondary Qualifications	1996	%	2001	%
Agriculture and biological sciences	10	1.47%	50	3.88%
Commerce, management and business administration	140	20.59%	320	24.81%
Educational, recreational and counseling services	25	3.68%	110	8.53%
Engineering and applied science tech. and trades	240	35.29%	445	34.50%
Engineering and applied sciences	50	7.35%	40	3.10%
Fine and applied arts	50	7.35%	70	5.43%
Health professionals, science and technologies	60	8.82%	110	8.53%
Humanities and related fields	0	0.00%	35	2.71%
Mathematics and physical sciences	65	9.56%	20	1.55%
Social sciences and related fields	35	5.15%	70	5.43%
Other and/or no specialization	0	0.00%	0	0.00%
Total people with post secondary qualifications	680	100.00%	1,290	100.00%
Females with post-secondary qualifications	270	39.71%	630	48.84%
Males with post-secondary qualifications	410	60.29%	660	51.16%

Source: Statistics Canada 1996 & 2001 Census (numbers may not add up due to rounding)

## Labour Force

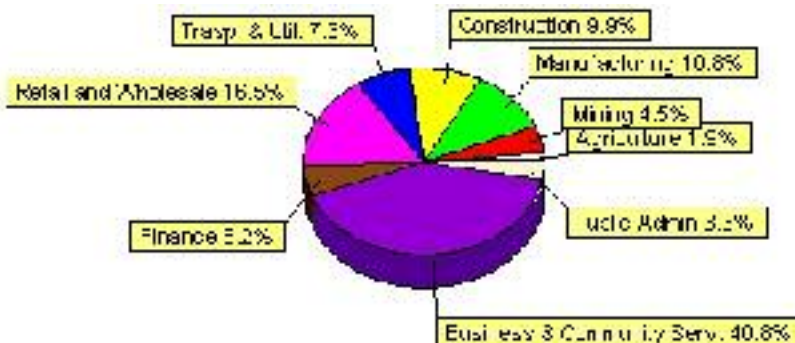
Labour force by activity	1996	2001
In the labour force, both sexes	1,215	2,120
Not in the labour force, both sexes	285	550
Total population 15 and over	1,500	2,670
Employed, both sexes	1,175	2,095
Unemployed, both sexes	40	25
Participation rate, both sexes	81.00%	79.00%
Unemployment rate, both sexes	3.00%	1.00%

Source: Statistics Canada 1996 & 2001 Census (numbers may not add up due to rounding)

Labour Force by Industry Division	1996	% of total	2001	% of total
Agriculture	25	2.07%	40	1.89%
Mining	95	7.88%	95	4.48%
Manufacturing	65	5.39%	230	10.85%
Construction	145	12.03%	210	9.91%
Transportation. & Utilities	80	6.64%	155	7.31%
Retail and Wholesale	285	23.65%	350	16.51%
Finance	75	6.22%	110	5.19%
Business & Community Services	355	29.46%	865	40.80%
Public Administration	60	4.98%	70	3.30%
Total All Industries	1,205	100.00%	2,120	100.00%

Source: Statistics Canada 1996 & 2001 Census (numbers may not add up due to rounding)

### Chestermere Labour Force By Industry - 2001



Labour Force by Major Occupational Groups	1996	%	2001	%
Management occupations	175	14.46%	360	16.98%
Business, Finances and administrative occupations	325	26.86%	470	22.17%
Natural and applied sciences and related occupations	100	8.26%	130	6.13%
Health occupations	35	2.89%	130	6.13%
Occupations in social science; education; government and religion	65	5.37%	100	4.72%
Occupations in art; culture; recreation and sport	10	0.83%	45	2.12%

Sales and service occupations	295	24.38%	380	17.92%
Trades; transport; equipment operators and related occupations	140	11.57%	350	16.51%
Occupations unique to primary industry	25	2.07%	70	3.30%
Occupations unique to processing; manufacturing and utilities	25	2.07%	85	4.01%
Occupations not elsewhere classified	0	0.00%	10	0.47%
Total - All Occupations (major groups)	1,210	100.00%	2,120	100.00%
Females - All Occupations	515	42.56%	950	44.81%
Males - All Occupations	695	57.44%	1,170	55.19%

Source: Statistics Canada 1996 & 2001 Census (numbers may not add up due to rounding)

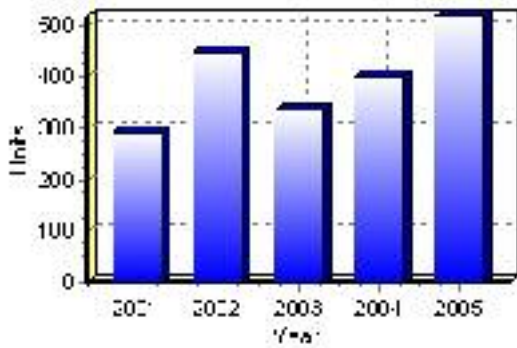
---

# Building Permits

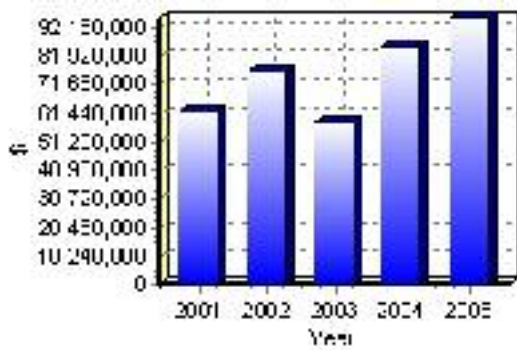
Total Building Permit Values	2001	2002	2003	2004	2005
Building Permits Value, Commercial	\$1,000,000	\$37,000	\$90,000	\$6,695,000	\$2,745,000
Building Permits Value, Industrial	\$200,000	\$0	\$10,000	\$0	\$7,000
Building Permits Value, Institutional	\$8,831,000	\$560,000	\$70,000	\$3,512,000	\$220,000
Building Permits Value, Residential	\$51,683,000	\$75,588,000	\$57,813,000	\$75,225,000	\$92,788,000
Building Permits Value, Total	\$61,714,000	\$76,185,000	\$57,983,000	\$85,432,000	\$95,760,000
Total Housing Starts	294	450	335	402	519

Source: Statistics Canada 2000-2004 Building Permits (numbers may not add up due to rounding)

## Total Housing Starts



## Value of Building Permits



## Dwellings

<b>Occupied Private Dwellings by Type</b>	<b>1996</b>	<b>% of total</b>	<b>2001</b>	<b>% of total</b>
Apartments	0	0.00%	0	0.00%
Detached Duplexes	0	0.00%	0	0.00%
Movable Dwellings	0	0.00%	0	0.00%
Other single attached house	0	0.00%	0	0.00%
Row and semi-detached house	15	2.42%	25	2.25%
Single-detached house	605	97.58%	1,080	97.30%
Total number of occupied private dwellings	620	100.00%	1,110	100.00%
Private dwellings, owned	585	94.35%	1,060	95.50%
Private Dwellings, rented	35	5.65%	45	4.05%

Source: Statistics Canada 1996 & 2001 Census (numbers may not add up due to rounding)

<b>Private Dwellings by Period of Construction</b>	<b># of Dwellings</b>	<b>% of total</b>
Period of construction, before 1946	0	0.00%
Period of construction, 1946 - 1960	0	0.00%
Period of construction, 1961 - 1970	45	4.09%
Period of construction, 1971 - 1980	90	8.18%
Period of construction, 1981 - 1990	150	13.64%
Period of construction, 1991 - 2001	815	74.09%
Total number of private dwellings constructed	1,100	100.00%

Source: Statistics Canada 2001 Census (numbers may not add up due to rounding)

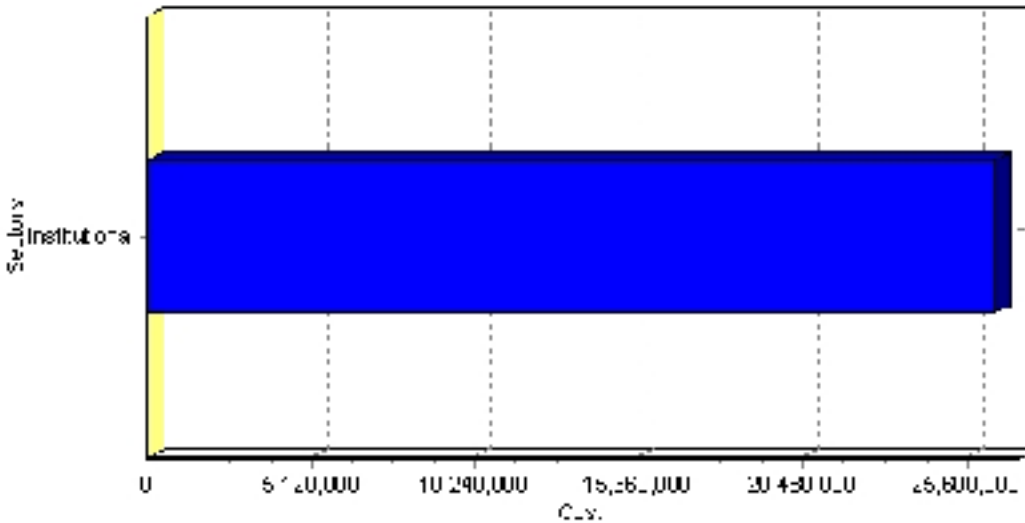
# Projects

## Summary of Projects in Chestermere as of September 2006

Project Sector	Number of Projects	Project Cost
Institutional	2	\$26,500,000
Total	2	\$26,500,000

This inventory lists projects in Alberta that have recently been completed, are under construction, or are proposed to start construction. Not all projects are listed due to reasons of confidentiality and/or due to information not being available at the time of printing. Project data is obtained from public information sources, where possible, this data has been verified with the project proponent/developer, users of the Inventory may wish to confirm project data with the proponent/developer. The inventory does not breakdown project expenditures by any given year. The cost of a project is the value of expenditures expected over all phases of project construction, which may span over two or more years. Cost of projects listed in the Inventory are estimated values only. Source: Alberta Economic Development, 2004.

## Value of Projects by Sector (as of September 2006)



Project Status	Number of Projects	Project Cost
Proposed	2	\$26,500,000
Total	2	\$26,500,000

This inventory lists projects in Alberta that have recently been completed, are under construction, or are proposed to start construction. Not all projects are listed due to reasons of confidentiality and/or due to information not being available at the time of printing. Project data is obtained from public information sources, where possible, this data has been verified with the project proponent/developer, users of the Inventory may wish to confirm project data with the proponent/developer. The inventory does not breakdown project expenditures by any given year. The cost of a project is the value of expenditures expected over all phases of project construction, which may span over two or more years. Cost of projects listed in the Inventory are estimated values only. Source: Alberta Economic Development, 2004.

## Largest Projects in Chestermere as of September 2006

Company Name	Project Description	Project Location	Project Cost	Construction Schedule	Status
Alberta Infrastructure and Transportation*	NEW ELEMENTARY SCHOOL (K to Grade 6)	Chestermere	\$14,500,000	-	Proposed
Alberta Infrastructure and Transportation*	NEW ELEMENTARY SCHOOL (K to Grade 6)	Chestermere	\$12,000,000	-	Proposed

Disclaimer: Information in this profile has been provided from a variety of external sources. Although every effort has been made to ensure the accuracy, currency and reliability of the content and data, AlbertaFirst.com Ltd. accepts no responsibility in this regard.

© AlbertaFirst.com Ltd., 2006.