

# Athabasca

<http://www.town.athabasca.ab.ca>

## Welcome

### Message from the Mayor

Thank you for visiting our Town website. Just to let you know, Athabasca is one of the oldest communities in Alberta, getting its start during the era of the fur trade due to its natural location on the Athabasca River. Indeed, at one point, steam-powered paddle-wheeled boats were a common sight on the Athabasca River, being constructed in the area what is now the Town Riverfront.

In the pre-1905 period, Athabasca was even considered a contender when our Provincial forefathers were choosing the Provincial capital. Currently, Athabasca's location and intersecting network of highways and roads do indeed make it a "Gateway to the Great New North". In addition to the oil, gas and forestry industry, Athabasca plays host to many tourists and travelers alike throughout the year.

Every year sees the welcome addition of many new residents in addition to new business and industry. We are proud of our Town, its residents and our position in the greater community as a whole.

We are interested in promoting our Town, and if I may personally be of assistance to you in any way, please do not hesitate to call or let me know your concerns.

Regards,

Richard Verhaeghe  
Mayor

## Area Overview

Point to the centre of a map of Alberta and you're pointing at Athabasca Country - "*Land of the Whispering Hills*" - a land with a rich past, an exciting present, and a promising future.

Come to Athabasca Country for unspoiled lakes and rivers, experience a part of Alberta's past, and find a community with a fine blend of activities, facilities, and friendliness. Athabasca is nestled among the hills along a bend in the Athabasca River, which flows northeast from its source high in the Rocky Mountains to Lake Athabasca.

Athabasca comes from the Cree Indian word "*Athapaskan*", the name the Cree gave to Indians living around Lake Athabasca. Athapaskan refers to the lake and might mean "*where there are reeds*" or "*meeting place of many waters*". First named Athabasca Landing by the Hudson's Bay Company, the town's name was shortened to Athabasca in 1913.

## Community Services

Municipal Town of Athabasca 4705-49th Avenue Athabasca, Alberta T9S 1B7 Telephone: (780)675-2063 Fax: (780)675-4242  
Provincial Alberta Alcohol & Drug Abuse Commission Alberta Agriculture Development Corporation - Lending Division Family & Employment Support Services Community Corrections Alberta Sustainable Resources Forestry Family and Social Services Mental Health Clinic Provincial Court Public Lands Public Works Supply and Services Transportation and Utilities Federal Canada Post  
Royal Canadian Mounted Police

# Community Lifestyle

## Recreation

Take a look at what Athabasca Country offers - tennis courts, ball parks, walking trails, curling rink, artificial ice arena as well as outdoor skating rinks, groomed cross-country ski trails, a world-class 18-hole golf course with grass greens, an indoor swimming pool complete with sauna and whirlpool, and rodeo grounds.

One of the world's few unpolluted major rivers, the 1,231 kilometre-long [765 miles] Athabasca River provides a recreational wonderland for canoeing, sport fishing, and jet boating right in the heart of Athabasca Country.

The spectacular valleys of the Athabasca River, Tawatinaw Creek and Muskeg Creek Ravine dominate the scenery and give the region its distinctive geography. Campers, either with tent or recreational vehicle, have many sites from which to choose. The town's site at the meeting of the Tawatinaw Creek and Athabasca River provides washroom and shower facilities, sanitary disposal, and a kitchen shelter. More sites can be found at nearby County and Provincial parks.

Nearby, sparkling lakes with sandy beaches invite boating, water skiing, swimming, wind surfing, and sailing. The naturalist and outdoor enthusiast will find excellent fish and wildlife habitat.

Golfing is available at the Athabasca Golf and Country Club. Downhill and cross-country skiing are available at the Long Lake Ski Area and the Tawatinaw Ski Area .

A Tourist Information Centre [railroad caboose] is located next to the [historic train station] downtown. The TIC is open in the summer months.

## Community Organizations

- Athabasca Lions Club
- Knights Of Columbus
- Order Of The Royal Purple
- Rotary Club Of Athabasca
- Royal Canadian Legion
- Royal Canadian Legion Women's Auxiliary Tawatinaw Masonic Lodge
- Athabasca Agricultural
- Society Athabasca & District
- Seniors Society
- Athabasca Fish & Game Association (Nrs)
- Water Fish & Wildlife Parks
- Athabasca Music Festival
- Athabasca Native Friendship Centre Society
- Athabasca Volunteer Fire
- Athabasca Women Aglow
- Catholic Women's League
- Ducks Unlimited
- Foster Parents Association
- Friends Of The Athabasca Environment Association
- Full Gospel Businessmens Fellowship
- International Hospital Volunteers Clubs & Associations

- Athabasca Air Cadets
- Athabasca District Guiding
- Athabasca Co-Ed Volleyball League
- Athabasca Canoe Club
- Athabasca Curling Club
- Athabasca Dance Society
- Athabasca District Minor Hockey Association
- Athabasca Figure Skating Club
- Athabasca Flips Gymnastics Club
- Athabasca 4-H Beef Club
- Athabasca Gun Club
- Athabasca Metis Nation Of Alberta
- Athabasca Hockey Parents Association
- Athabasca Minor Ball Association
- Athabasca Nordic Ski Club
- Athabasca Oldtimers Hockey
- Athabasca Players
- Athabasca Pottery Club
- Athabasca Red Army Hockey Club
- Athabasca River Runners Snowmobile Club
- Athabasca Slow Pitch Association
- Athabasca Soccer Association
- Scouts Canada 1st
- Athabasca Scouts
- Cubs & Beavers
- Athabasca Toastmasters
- Athabasca Teen Centre Society
- Athabasca Ukrainian Folk Dance Club
- Junior Forest Wardens' Camp Ladies' Fastball
- Northern Light Junior Forest Wardens

#### **Religious Services**

- Zion Lutheran Church
- Aspen Ridge Christian Fellowship
- Athabasca Missionary Church
- United Church of Canada
- Anglican Church of Canada
- Pentecostal Assemblies of Canada
- Ukrainian Catholic Church
- Athabasca Ukrainian Orthodox Church
- Kingdom Hall of Jehovah's Witnesses
- Riverview Community Church

- Shiloh Tabernacle United Reformed Church
- St. Gabriel's Roman Catholic Church

### **Special Annual Events/Attractions**

The Performing Arts Centre, a multi-use theatre created in 1981 with the renovation of a wing of the Brick School, provides Athabascans with entertainment and cultural activities ranging from the Athabasca Live Arts Society season to special events.

An active community theatre and music program tells a lot about how much Athabascans love to get into the act themselves.

- Athabasca & District Music Festival -- March/April
- Annual Open House and Pottery Sale -- May
- Ladies Open Golf Tournament -- June
- Athabasca University Convocation -- June
- Chamber of Commerce Retail Promotion -- June
- Canada Day Celebrations -- July 1
- Men's Open Golf Tournament -- July
- Junior Open Golf Tournament -- August
- Athabasca Fair and Rodeo -- June
- Senior Open Golf and Tournament -- August
- Harvest Gold Old Time Fiddler Contest -- September
- Whispering Hills Country Music-Talent Show -- October
- Ducks Unlimited Supper & Auction -- November
- Chamber of Commerce Moonlight Madness -- November

### **Hospitality**

#### Accommodations

- Northern Lights Bed & Breakfast
- Top of the Town Bed & Breakfast
- Athabasca Hillside Motel Ltd.
- Athabasca Inn -
- Best Western
- Athabasca Lodge
- Motel Super 8
- Union Hotel

#### Restaurants

- Happy Gardens Restaurant
- Athabasca Burger Bar
- Neighbours Pub
- Greenspot Restaurant
- Athabasca Inn Restaurant
- Golden Fountain
- Giorgios Mike's Pizza & Restaurant
- Riverhouse Cravings
- Davina's Elsa's Maple Tree Clubhouse

- Subway
- A & W
- Union Cafe

## Economic Base

The economy of the Athabasca region is based on agriculture, natural gas, forestry and, more recently, tourism. The principle economic activity of the Athabasca area is agriculture, although its importance has decreased over the past few years.

The area is well suited to forage production. Barley is the main grain crop, but significant acreage of wheat, oats, and rapeseed are also grown. Beef cattle is the major livestock industry in the area, but there are also a number of specialized dairy, sheep, swine, and beef feed lot operations.

The development of gas fields in the area has had a profound impact on the economy in recent years. As the demand for natural gas stabilizes, it is expected this industry will increase in the Athabasca region, along with the potential for the development of tar sands activity north of Athabasca.

Timber has been and continues to be a major source of employment in the Athabasca area. Presently, the major areas are Smith, Calling Lake, and Wandering River, in the northern portion of the Athabasca trading area. In addition, there are many small lumber mills in the immediate area which are operated by farmers on a part-time basis.

The local retail/service sectors have also grown significantly in the past five years in response to developments within these other industry sectors.

Athabasca lies in the heart of some beautiful lake country, offering a wide range of recreational pursuits. The region also has a rich history. Several organizations have been active in making the area the leaders in north-central Alberta for tourism and related activities.

## Economic Facts

### Major Businesses Products/Services

Alberta Pacific Forest Industries Inc. Light industrial parks are located within Town limits and eastern outskirts.

### Financial Institutions

- Bank of Nova Scotia
- ATB Financial
- Canadian Imperial
- Bank of Commerce
- Common Wealth
- Credit Union

## Education

The Educational Systems is under the jurisdiction of the Aspen View Regional Division #19, headquartered in Athabasca  
Telephone: (780)675-7080

### Daycare/Nursery

Private day homes in Athabasca

**Public schools located in Athabasca include:**

- Whispering Hills Primary School [K-3]
- Landing Trail Intermediate School [4-7]
- Edwin Parr Composite High School [8-12]

## Emergency Services

### **Fire Protection**

Athabasca is served by a volunteer fire department

### **Mailing Address:**

4705 - 49 Avenue  
Athabasca, AB  
T9S 1B7  
Telephone: (780)675-2063  
Fax: (780)675-4242

### **Police Services**

Police Protection  
R.C.M.P. (12 Person detachment)  
4806 - 46th Ave  
Athabasca, Alberta  
T9S 1M7

### **Administration/Information**

Telephone (780)675-5122  
Complaints (24 Hours)  
Telephone (780)675-4252  
Fax: (780)675-4355

A By-Law officer serves the Town of Athabasca for 30 hours per week. Emergency: **911**

## Health Care

The Athabasca Health Care Centre has 42 acute care beds, 23 long term auxiliary beds and 8 bassinets. There are also 3 medical centres including: doctors, dentists, physiotherapists, dieticians, chiropractors, massage therapists, and optometrist along with public services provided by the Regional Health Unit [Aspen Health Services].

**Senior services provided:** a nursing home, a senior citizen lodge, and senior citizens housing complexes.

The Aspen Health Services [Athabasca office] is committed to the concept of "*Healthy Albertans in a Healthy Alberta*". Serving over 30,000 residents living in 60,000 square kilometres, it offers services which promote healthy lifestyles and independent living. Services include: adult health services, Alberta Aids to Daily Living, communicable disease control, rehabilitation services, dental services, early intervention program, environmental health, health education/promotion, Well Baby and immunization clinics, hereditary disease program, home care & hospital liaison, nutrition programs, prenatal classes, preschool screening, school health services, sexuality education, and speech language services.

Services to disabled/handicapped persons is supplied through Blue Heron Enterprises.  
Contact: Arno Birkigt Telephone: (780)675-3891

Family and Community Support Services [FCSS] programs are offered through the entire region.  
Contact: Serena Koons Telephone: (780)675-2623

## Key Contacts for Business Development

### **Municipal**

#### Town of Athabasca

4705 - 49th Avenue  
Athabasca, Alberta  
T9S 1B7  
Tel: (780)675-2063  
Fax: (780)675-4242

Richard Albert Verhaeghe  
*Mayor Doug B.*  
Topinka Chief Administrative

#### Officer Athabasca District Chamber of Commerce

Ty Hart,  
*President*  
4705-49th Avenue  
Athabasca, Alberta  
T9S 1B7  
Telephone: (780)675-3046  
Fax: (780)675-3872

### **Provincial**

#### Alberta Economic Development

Regional Development Branch  
4th Floor,  
Commerce Place  
10155 - 102 Street  
Edmonton, AB  
T5J 4L6

Contact: Audrey Alberecht-Lee  
Telephone: (780)427-6075  
Fax: (780)422-9127

#### **(updated May 10, 2004)**

Jan Couper,  
*Client Services Representative*  
Tel: 780-427-6291  
E-Mail: [jan.couper@gov.ab.ca](mailto:jan.couper@gov.ab.ca)

Mike Cardinal  
*Member of the Legislative Assembly [MLA]*

#### Athabasca-Redwater Constituency

324 Legislature Building,

10800 - 97 Avenue  
Edmonton, Alberta  
T5K 2B6  
Telephone: (780)675-3232

(Athabasca)  
Fax: (780)675-2396  
Telephone: (780)415-4800

(Edmonton)  
Federal Brian Jean

Member of Parliament [MP]  
Fort McMurray - Athabasca  
Athabasca Office:  
5101 - 50 Avenue  
Athabasca AB  
T9S 1T2

Ottawa Office:  
513 Confederation Building  
House of Commons  
Ottawa, ON  
K1A 0A6  
Telephone: (613)992-1154  
Fax: (613)992-4603

Fort McMurray Office:  
102-9912 Franklin Avenue  
Fort McMurray, AB  
T9H 2K5  
Telephone: (780)743-2201  
Fax: (780)743-2287

## Location

The Town of Athabasca is located in the County of Athabasca No. 12, in north-central Alberta. Three highways meet at Athabasca. Highway 2 parallels much of the historic Athabasca Landing Trail and leads 145 kilometres south to Edmonton. Secondary Highway 813 leads north to the Slave Lake Forest and the sandy white beaches and provincial park at Calling Lake. Highway 2 north and Highway 55 east - the Northern Woods and Water Route - link the Town to Saskatchewan and British Columbia, and lead to other nearby provincial parks and recreation areas.

## Post Secondary Education

Athabasca University has an international reputation for distance education, and is a model for the future. With more than 150 staff, Athabasca University offers several undergraduate degree programs, and credit transfer arrangements can be made to and from other institutions.

The campus includes a library, archives, daycare centre, recreation area, and events such as films, seminars, workshops, and cultural activities.

Northern Lakes College Telephone: (780)675-9484



**Other facilities include:** a library and archives in the Historic Brick School Complex in Athabasca.

## Taxation

	<u>Residential/Farmland</u>	<u>Non-Residential</u>
<b>2005</b>		
Municipal Tax Rate	11.064	16.945
Education - Alberta School Foundation Fund Tax Rate	4.499	6.924
Seniors Lodge Accommodation Tax Rate	0.124	0.124

Mill Rates [2005]

Residential-Public 15.687

Non-Residential-Public 23.993

## Transportation

### Air Services

The Athabasca Municipal Airport has all-weather facilities. Alberta Central Airways provides scheduled/charter service. The nearest commercial and air freight service is at Edmonton International Airport, located 157 km south of Athabasca.

Telephone: (780)675-5225

### Highways

Athabasca is served by three main highways: Highway 2 south to Edmonton and north to Slave Lake, Highway 55 east to Lac La Biche and Saskatchewan, and Secondary Highway 813 north to Calling Lake and onward to Wabasca/Desmarais.

### Bus Services

Greyhound Bus Lines provides regular scheduled daily inter-community service.

### Couriers and Taxis

Loomis, Purolator, and UPS provide service to the Athabasca area.

There are two taxi companies located in Athabasca.

## Utilities

### Power

*Epcor*

Customer Service: 310-4300(local call)

For Outages call: 310-9473(local call)

### Natural Gas

*AltaGas*

Telephone: 1-866-222-2067

### Telephone

Telus Communications Inc.

P.O. Box 2422 ,

Stn Main Edmonton, AB

T5J 2S7

Residential Customers:

Telephone Toll-Free: 310-2255

Commercial Customers: Telephone

Toll Free: 310-3100

**Water Supply**

The source of water is the Athabasca River [2 reservoirs].

**Waste Management**

Sewage treatment is provided by aerated lagoons.

**Garbage Method/Frequency of Collection:** Weekly Industrial/Commercial - owner's responsibility

Residential - Weekly pick-up (Tuesdays or Fridays)

Garbage For Pick-Up or Questions, call: Athabasca Recycle & Transfer Site at  
(780)675-1117

Recycle For Pick-Up or Questions, call Dr. Recycle at (780)689-8271

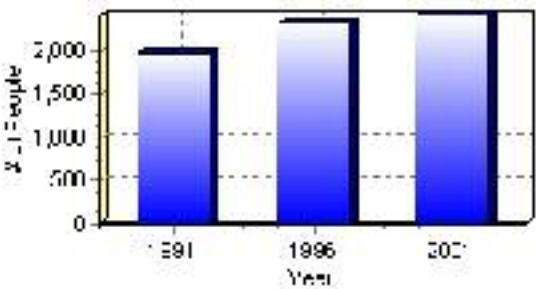
# Population

## Total Population

Population 2004*	2,415
Population 2003*	2,415
Population 2002*	2,415
Population 2001**	2,415
Population 2000*	2,313
Population 1996**	2,313
Population 1991**	1,965
Population % change 1991-1996	15.05%
Population % change 1996-2001	4.22%

\* Source: Official Population List, Alberta Municipal Affairs  
\*\* Source: Statistics Canada 1991, 1996, & 2001 Census

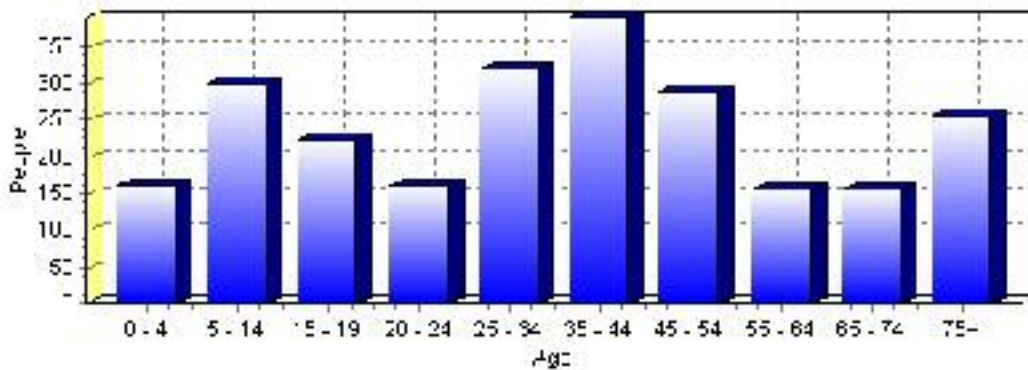
## Total Population 1991-2001



Population by Age and Gender	1996 Male	1996 Female	1996 Total	2001 Male	2001 Female	2001 Total
Age 0 - 4	80	75	155	80	80	160
Age 5 - 14	170	175	345	155	145	300
Age 15 - 19	85	90	175	100	125	225
Age 20 - 24	85	75	160	80	80	160
Age 25 - 34	180	160	340	170	150	320
Age 35 - 44	175	215	390	175	215	390
Age 45 - 54	135	100	235	150	140	290
Age 55 - 64	65	70	135	70	85	155
Age 65 - 74	50	115	165	70	85	155
Age 75 and older	75	155	230	75	180	255
Total All Persons	1,085	1,225	2,310	1,120	1,295	2,415

Source: Statistics Canada 1996 & 2001 Census (numbers may not add up due to rounding)

### Athabasca Population by Age Group (2001)

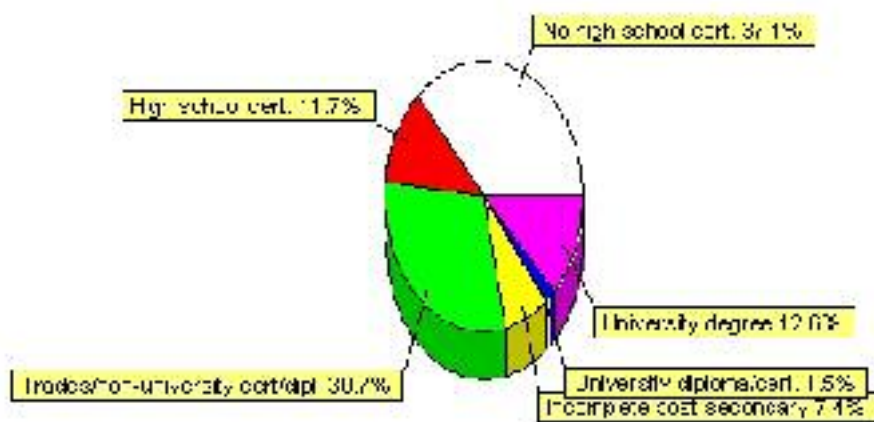


## Education Statistics

Highest level of schooling for Population 20yrs and older	2001	%
People without high school certificates	605	37.12%
People with high school certificates	190	11.66%
People with trades or non-university certificate or diploma	500	30.67%
People with post-secondary education (not completed)	120	7.36%
People with university diploma/certificate	25	1.53%
People with university degree	205	12.58%
Total Population 20 years and older	1,630	100.00%

Source: Statistics Canada 2001 Census (numbers may not add up due to rounding)

### Athabasca Highest Level of Schooling 2001



Population with Post Secondary Qualifications	1996	%	2001	%
Agriculture and biological sciences	35	4.93%	15	2.07%
Commerce, management and business administration	145	20.42%	150	20.69%
Educational, recreational and counseling services	115	16.20%	70	9.66%
Engineering and applied science tech. and trades	180	25.35%	205	28.28%
Engineering and applied sciences	10	1.41%	20	2.76%
Fine and applied arts	25	3.52%	45	6.21%
Health professionals, science and technologies	80	11.27%	70	9.66%
Humanities and related fields	40	5.63%	35	4.83%
Mathematics and physical sciences	0	0.00%	10	1.38%
Social sciences and related fields	80	11.27%	95	13.10%
Other and/or no specialization	0	0.00%	10	1.38%
Total people with post secondary qualifications	710	100.00%	725	100.00%
Females with post-secondary qualifications	360	50.70%	345	47.59%
Males with post-secondary qualifications	350	49.30%	380	52.41%

Source: Statistics Canada 1996 & 2001 Census (numbers may not add up due to rounding)

## Labour Force

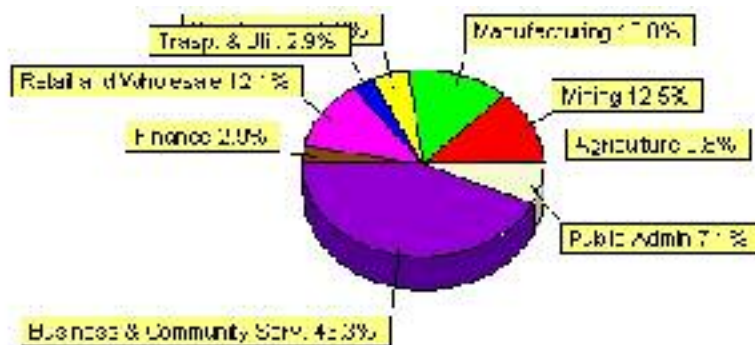
Labour force by activity	1996	2001
In the labour force, both sexes	1,185	1,215
Not in the labour force, both sexes	530	635
Total population 15 and over	1,715	1,850
Employed, both sexes	1,060	1,130
Unemployed, both sexes	120	80
Participation rate, both sexes	69.00%	66.00%
Unemployment rate, both sexes	10.00%	7.00%

Source: Statistics Canada 1996 & 2001 Census (numbers may not add up due to rounding)

Labour Force by Industry Division	1996	% of total	2001	% of total
Agriculture	35	2.99%	10	0.83%
Mining	80	6.84%	150	12.50%
Manufacturing	145	12.39%	165	13.75%
Construction	65	5.56%	60	5.00%
Transportation. & Utilities	65	5.56%	35	2.92%
Retail and Wholesale	140	11.97%	145	12.08%
Finance	65	5.56%	35	2.92%
Business & Community Services	505	43.16%	520	43.33%
Public Administration	30	2.56%	85	7.08%
Total All Industries	1,170	100.00%	1,200	100.00%

Source: Statistics Canada 1996 & 2001 Census (numbers may not add up due to rounding)

### Athabasca Labour Force By Industry - 2001



Labour Force by Major Occupational Groups	1996	%	2001	%
Management occupations	95	8.05%	155	12.86%
Business, Finances and administrative occupations	220	18.64%	225	18.67%
Natural and applied sciences and related occupations	30	2.54%	70	5.81%
Health occupations	65	5.51%	55	4.56%
Occupations in social science; education; government and religion	115	9.75%	55	4.56%
Occupations in art; culture; recreation and sport	45	3.81%	45	3.73%

Sales and service occupations	300	25.42%	285	23.65%
Trades; transport; equipment operators and related occupations	155	13.14%	200	16.60%
Occupations unique to primary industry	70	5.93%	50	4.15%
Occupations unique to processing; manufacturing and utilities	65	5.51%	70	5.81%
Occupations not elsewhere classified	10	0.85%	10	0.83%
Total - All Occupations (major groups)	1,180	100.00%	1,205	100.00%
Females - All Occupations	570	48.31%	550	45.64%
Males - All Occupations	610	51.69%	650	53.94%

Source: Statistics Canada 1996 & 2001 Census (numbers may not add up due to rounding)

---

## Income

<b>Family Income (Number of Families)</b>	<b>1996</b>	<b>%</b>	<b>2001</b>	<b>%</b>
less than \$19,999	30	6.32%	40	8.99%
\$20,000 - \$39,999	120	25.26%	90	20.22%
\$40,000 - \$59,999	75	15.79%	140	31.46%
\$60,000 and over	250	52.63%	250	56.18%
Total number of families	475	100.00%	520	116.85%
Average family income	\$61,681		\$70,629	
Median family income	\$60,453		\$68,163	

Source: Statistics Canada 1996 & 2001 Census (numbers may not add up due to rounding)

<b>Household Income (Number of Households)</b>	<b>1996</b>	<b>%</b>	<b>2001</b>	<b>%</b>
less than \$19,999	240	27.27%	210	21.88%
\$20,000 - \$39,999	225	25.57%	195	20.31%
\$40,000 - \$59,999	120	13.64%	160	16.67%
\$60,000 and over	95	10.80%	405	42.19%
Total number of households	880	100.00%	960	100.00%
Average household income	\$46,498		\$57,484	
Median household income	\$38,192		\$51,310	

Source: Statistics Canada 1996 & 2001 Census (numbers may not add up due to rounding)

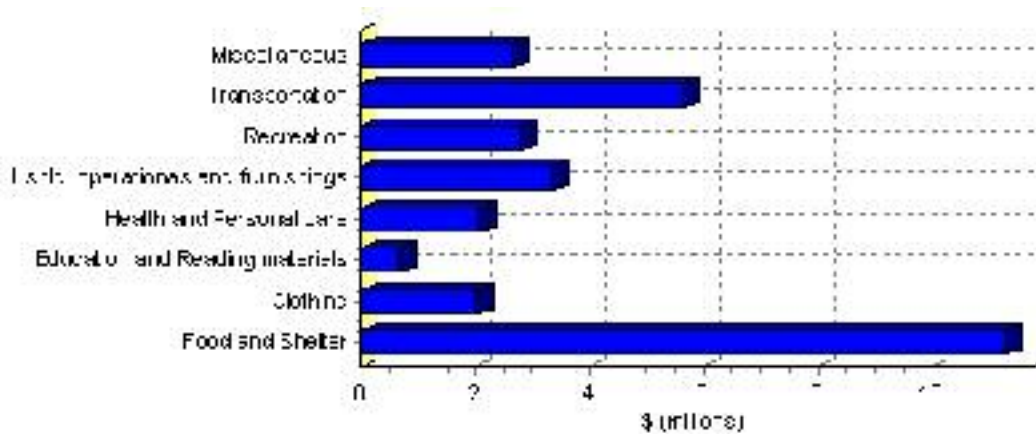


# Family Expenditure

Expenditure Category	1992	% of total	1996	% of total
Food and Shelter	\$8,171,135	37.49%	\$11,284,894	36.94%
Clothing	\$1,487,675	6.83%	\$2,033,159	6.65%
Education and Reading materials	\$465,705	2.14%	\$677,502	2.22%
Health and Personal care	\$1,358,355	6.23%	\$2,077,528	6.80%
Hshld. operations and furnishings	\$2,404,560	11.03%	\$3,377,486	11.05%
Recreation	\$1,788,835	8.21%	\$2,796,315	9.15%
Transportation	\$4,419,615	20.28%	\$5,648,348	18.49%
Miscellaneous	\$1,689,910	7.75%	\$2,656,878	8.70%
Total Current Consumption	\$21,795,565	100.00%	\$30,552,110	100.00%
Total # of Households	755		883	
Average Consumption per Household	\$28,868		\$34,600	

Source: Statistics Canada Family Expenditure Survey 1992 & 1996 (numbers may not add up due to rounding).

## Athabasca Family Expenditures (1996)

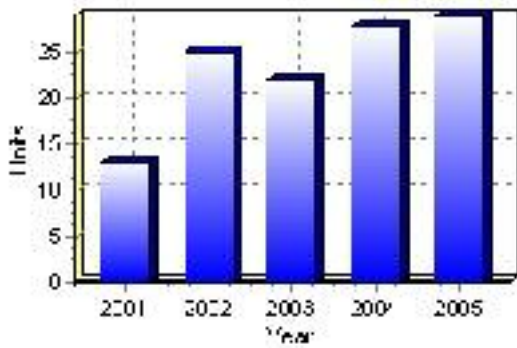


# Building Permits

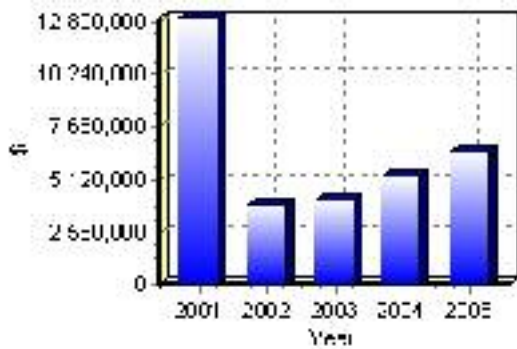
Total Building Permit Values	2001	2002	2003	2004	2005
Building Permits Value, Commercial	\$8,488,000	\$125,000	\$1,044,000	\$846,000	\$1,145,000
Building Permits Value, Industrial	\$1,113,000	\$120,000	\$270,000	\$1,015,000	\$490,000
Building Permits Value, Institutional	\$1,594,000	\$811,000	\$0	\$15,000	\$58,000
Building Permits Value, Residential	\$1,798,000	\$2,857,000	\$2,781,000	\$3,433,000	\$4,742,000
Building Permits Value, Total	\$12,993,000	\$3,913,000	\$4,095,000	\$5,309,000	\$6,435,000
Total Housing Starts	13	25	22	28	29

Source: Statistics Canada 2000-2004 Building Permits (numbers may not add up due to rounding)

## Total Housing Starts



## Value of Building Permits



## Dwellings

<b>Occupied Private Dwellings by Type</b>	<b>1996</b>	<b>% of total</b>	<b>2001</b>	<b>% of total</b>
Apartments	140	15.91%	85	8.85%
Detached Duplexes	30	3.41%	55	5.73%
Movable Dwellings	10	1.14%	30	3.13%
Other single attached house	0	0.00%	10	1.04%
Row and semi-detached house	75	8.52%	130	13.54%
Single-detached house	630	71.59%	650	67.71%
Total number of occupied private dwellings	880	100.00%	960	100.00%
Private dwellings, owned	505	57.39%	605	63.02%
Private Dwellings, rented	380	43.18%	360	37.50%

Source: Statistics Canada 1996 & 2001 Census (numbers may not add up due to rounding)

<b>Private Dwellings by Period of Construction</b>	<b># of Dwellings</b>	<b>% of total</b>
Period of construction, before 1946	50	5.26%
Period of construction, 1946 - 1960	105	11.05%
Period of construction, 1961 - 1970	175	18.42%
Period of construction, 1971 - 1980	225	23.68%
Period of construction, 1981 - 1990	175	18.42%
Period of construction, 1991 - 2001	220	23.16%
Total number of private dwellings constructed	950	100.00%

Source: Statistics Canada 2001 Census (numbers may not add up due to rounding)

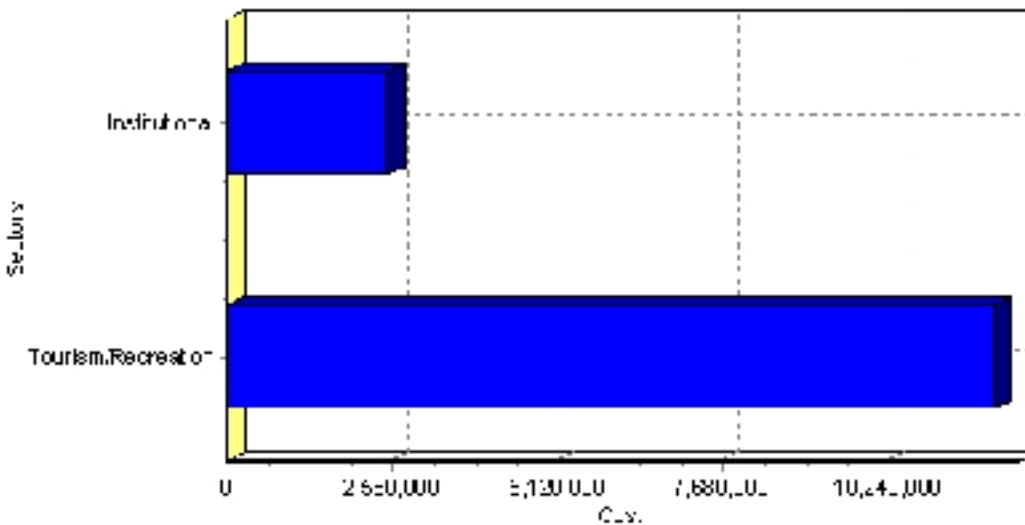
# Projects

## Summary of Projects in Athabasca as of September 2006

Project Sector	Number of Projects	Project Cost
Tourism/Recreation	1	\$11,900,000
Institutional	1	\$2,500,000
Total	2	\$14,400,000

This inventory lists projects in Alberta that have recently been completed, are under construction, or are proposed to start construction. Not all projects are listed due to reasons of confidentiality and/or due to information not being available at the time of printing. Project data is obtained from public information sources, where possible, this data has been verified with the project proponent/developer, users of the Inventory may wish to confirm project data with the proponent/developer. The inventory does not breakdown project expenditures by any given year. The cost of a project is the value of expenditures expected over all phases of project construction, which may span over two or more years. Cost of projects listed in the Inventory are estimated values only. Source: Alberta Economic Development, 2004.

## Value of Projects by Sector (as of September 2006)



Project Status	Number of Projects	Project Cost
Proposed	2	\$14,400,000
Total	2	\$14,400,000

This inventory lists projects in Alberta that have recently been completed, are under construction, or are proposed to start construction. Not all projects are listed due to reasons of confidentiality and/or due to information not being available at the time of printing. Project data is obtained from public information sources, where possible, this data has been verified with the project proponent/developer, users of the Inventory may wish to confirm project data with the proponent/developer. The inventory does not breakdown project expenditures by any given year. The cost of a project is the value of expenditures expected over all phases of project construction, which may span over two or more years. Cost of projects listed in the Inventory are estimated values only. Source: Alberta Economic Development, 2004.

## Largest Projects in Athabasca as of September 2006

Company Name	Project Description	Project Location	Project Cost	Construction Schedule	Status
Town of Athabasca / County of Athabasca	Regional Multiplex	Athabasca	\$11,900,000	-	Proposed
Greater North Foundation	Pleasant Valley Lodge Supportive Housing Project	Athabasca	\$2,500,000	-	Proposed

Disclaimer: Information in this profile has been provided from a variety of external sources. Although every effort has been made to ensure the accuracy, currency and reliability of the content and data, AlbertaFirst.com Ltd. accepts no responsibility in this regard.

© AlbertaFirst.com Ltd., 2006.