

Innisfail

www.townofinnisfail.com

Welcome

The Town of Innisfail with its strategic central Alberta location on Highway 2, has enjoyed a steady growth since incorporation in 1903.

We benefit from our proximity to the Rocky Mountains, visible to the west of town. Residents and tourists alike flock to the area to enjoy camping and world class fishing and hunting.

While location has been a key factor in attracting industry to Innisfail, the quality of life offered to its people has also played a significant role.

Our twin arena, indoor pool and curling rink all built since 1984, provide year round recreation. In summer, the tennis courts, ball diamonds and parks are an additional source of recreation. A ski hill is located on the town's west side for winter enjoyment.

Local schools offer enrichment programs such as band and drama. Our health care needs are met by competent medical practitioners, and the Innisfail Health Care Centre has both acute and long term beds.

We, the Mayor and Council of the Town of Innisfail are proud of the town we serve, but are most proud of the people we represent. Our citizens have a reputation for a strong work ethic, but it is their commitment to voluntarism that makes Innisfail the ideal place to live and raise a family.

Mayor and Council
Town of Innisfail



Welcome To Innisfail!

Area Overview

Ever since the days when stage-coaches travelled back and forth on the old Calgary-Edmonton Stage-Coach trail, Innisfail has been a favoured stopping place. A century later, Innisfail continues to be a town flavoured with western hospitality, but it is now complemented by industries employing the latest technology.

The humble cabins and workplaces of the pioneers have given way to contemporary facilities and industrial development. Now 100 years old and with a population nearing

7000, Innisfail is a prosperous community offering many attractive amenities.

Innisfail is situated on the major north/south Highway 2, and 118 km north of Calgary, 173 km south of Edmonton, and only a few minutes drive south of Red Deer. It has excellent air and rail transport service too. Red Deer Airport and Innisfail Airport are just minutes away, and CP Rail's main line passes through town.

Companies operating out of Innisfail span the entire spectrum of manufacturing, taking advantage of the economical and abundant land and the state-of-the-art waste disposal and recycling system. Innisfail is also a major service centre for one of western Canada's finest agricultural regions. Many of the major grain companies operate large elevators in the Innisfail area.

Tourists and residents alike enjoy the nearby area's lush scenery and attractive camping, hiking and fishing spots. The town boasts a curling rink, twin ice arena, indoor swimming pool, 8 shaded baseball diamonds, a bowling alley, ski hill, hiking trails, cross-country ski trails, 12 horseshoe pits, 3 asphalt tennis courts and one of the finest 18-hole golf courses in Alberta. The community has an advanced life support ambulance service, volunteer fire department, contracted RCMP policing service, and excellent education system and modern health care facilities.

By supporting local businesses and attracting vibrant new industries, Innisfail puts into action its slogan "Pride in Our Past, Faith in Our Future". Above all else, though, Innisfail's future is its people.

Community Services

Municipal Government

Town of Innisfail
4943 - 53 Street
Innisfail, Alberta
T4G 1A1
Tel: 403-227-3376
Fax: 403-227-4045
E-Mail:townhall@telusplanet.net
Website:www.townofinnisfail.com

Municipal Library

Service Delivery Department
Family and Community Support Services
Innisfail Neighbourhood Place
Tel: (403) 227-7744

Provincial Government

- Family and Social Services
- Medical Examiner-Coroner
- Mental Health
- Transportation and Utilities

Federal Government

- Canada Post Office
- Royal Canadian Mounted Police

Community Lifestyle

Recreation

The pride and joy of Innisfail residents is their 18 hole golf course - with expansion to 27 holes in progress, rated as one of the finest in the province. The Alberta Golf Guide describes this magnificent and challenging course in glowing terms, saying: "The designers have taken full advantage of the sharp changes in elevation offered by the natural hills. Standing on the tee at No. 14 the golfer has a marvellous view over the town and over miles of surrounding parkland countryside. A moment to stop and enjoy the view will be welcomed by most golfers, because playing this course can be a "humbling experience." The course offers a good selection of water hazards, sandtraps and doglegs as well as several tiered greens.

The Town has upgraded all of its major facilities since 1984. A curling rink with 4 sheets of ice has proven to be very popular with all age groups and a new twin-ice arena is serving the needs of youth, adults and seniors. A new modern 25-metre indoor swimming pool with hot tub and sauna is open year-round. Other facilities include 3 asphalt tennis courts, outdoor waterpark, skateboard park, BMX course, 12 shaled horseshoe pits, 8 shaled baseball diamonds, soccer pitches, hiking trails, x-country ski trails, wildlife viewing platform, water-skiing on Dodds Lake, ski hill with rope tow, and numerous neighbourhood parks, playgrounds, and paved biking trails.

Dodds Lake located in the heart of the community has been the site of many premier water-skiing events including Canadian Championships, Western Canadian Championships and 8 Provincial Championships. Adjacent to the lake is a 40 stall campground, all of which are serviced with electricity. Power sites are \$15.00/night, and tenting sites are \$10.00/night. There is a camp kitchen, horseshoe pits, day use area and playground facilities on site. Hot showers, washroom facilities, and firewood are available as well.

Other camping areas include Pine Lake, 32 km. east of Innisfail, and Red Lodge Provincial Park, 28 km southwest of Innisfail on the Red Deer River. Gleniffer Lake created by the construction of the Dickson Dam has become a tourist hot bed for boat and fishing enthusiasts.

Community Organizations

-Innisfail has numerous active community and service groups, as well as recreational and sports clubs, that are active in the town.

Religious Facilities and Churches

- Alliance Church
- Anglican Church
- Baha'i Faith Church
- Baptist Church of Innisfail
- Our Lady of Peace Church
- Church of Jesus Christ Latter Day Saints
- Church Of The Nazarene
- Innisfail United Church
- Kingdom Hall of Jehovah's Witnesses
- Parkland Community Church
- Peace Lutheran Church
- St. Andrew's Presbyterian Church
- Victory Chapel

Innisfail Tourism

Innisfail's Historical Village is a unique tourist attraction and provides visitors and residents a glimpse into the community's past. The Village includes the "Stopping House" for stage coaches and wagon trains that travelled the Calgary-Edmonton Trail a century ago. Other historical sites in the area include the Markerville Creamery, Stephansson House and Dickson Store.

Our 100 year celebration in 2004 saw the inception of Centennial Park - park within the center of town which will enhance a 200 acre natural site to include walking trails, wildlife viewing and amenities for all ages.

Visitors are encouraged to "take a walk on the wild side" and visit the [Discovery Wildlife Park](#) which is home to many exotic animals featured in movies and documentaries. Visitors can also hike on the [Destiny Trail System](#), or attend the annual [Daines Rodeo](#) in June, [Country Music Picnic](#) in August or the [Scarecrow Festival](#) in October. Check out why we're wild about Innisfail!

Accommodation

- Highwayman Motor Inn
- Bluebird Motel
- R&R Motel

Restaurants

-Restaurants in Innisfail include Tim Hortons, the A & W Restaurant, Aunt Peg's Soup and Sandwich, Bluebird Diner, Chicken Chef, Club Cafe, Dairy Queen, Flames Family Restaurant, Fox and Hound Lounge, Highwayman Restaurant, Innisfail Hotel, Innisfail Subway, Lau's Family Restaurant, McDonalds, Mountainview Family Restaurant, Mulligans Pizza, Obee's Pizza and Pasta Take Out, Poplar Grove Cafe, Red Ox Steak House, Royal Canadian Legion, Sandy's Restaurant and Bar, Tuckers Taphouse and Eatery, and the D & R Drive-In.

Economic Base

Long before manufacturers were attracted to Innisfail, it served as a major service centre for one of Canada's finest agricultural regions. Rich soil conditions and mild weather make the area ideal for growing various types of grain, grass, and hay as well as raising cattle, hogs and sheep.

Agriculture continues to be a major industry in the Innisfail area, but it is well complemented by a mix of other industrial growth. Oil & gas wells dot the picturesque countryside, contributing economically to the prosperity and high quality of life in the region.

Economic Facts

About 50 km west of town is one of the largest sour gas developments in the world [without doubt the largest in Alberta for the last 20 years]. The Caroline Gas Field has been estimated to contain 2 trillion cubic feet of reservoir fluids composed of roughly equal amounts of natural gas natural gas liquids and hydrogen sulphide.

Shell Canada is spearheading this development. Other oil and gas companies in the area include Amoco Petroleum, G.N.E. Resources, Kerr-McGhee, Czar Resources, and Nova.

A major part of Innisfail's economic base is the Johns Manville Canada Inc. fibreglass insulation manufacturing plant. 170 employees, mostly local residents, work at the plant. The firm recently received the Emerald Award by the Alberta Foundation for Environmental Excellence for recycling glass bottles and utilizing the crushed glass as a major component for its insulation.

Another major firm operating here is Nestle Purina Petcare, a manufacturer of a variety of pet foods. Most of the ingredients of the pet foods are produced locally, and local trucking firms do much of the transporting to major distribution centres. A key to this firm's success has been its strategic location in western Canada.

Sepp's Fine Foods Ltd. manufactures a variety of processed foods. The plant employs approximately 60-70 people when in full production.

Sunterra Foods Inc. is an Alberta based, family owned business, and is the only federally inspected lamb and veal slaughter/processing plant in Western Canada. Sunterra's Innisfail location processes about 1300-1700 lambs, 60 veal calves, and 900 hogs per week for world-wide markets. They are currently expanding to include a beef slaughter floor.

Innisfail Meat Packers has grown from a small 3-4 employee business to a thriving operation now employing 28 people.

Another thriving business is the Innisfail Auction Market, a family owned and operated business. Some \$60-70 million worth of livestock go through the auction each year. As many as 4,000 head of cattle sometimes pass through the auction ring in one day,

with an average sold of around 2,000.

Laden Industrial has been in Innisfail since 1996 and has expanded to include custom steel fabrication, installation and service, an environmental product line and commercial handling systems. In addition to their manufactured products, their companion software provides management tools for their system users.

Bilton Welding and Manufacturing provide a wide range of service involving welding, machining and repairs, equipment installation, and fabrication.

Octane Energy Services Corp specializes in 8" and under steel, fibreglass, plastic, zaplok and epoxy lined types of line pipe using conventional and progressive plowing techniques. They are able to build from grass roots to a fully commissioned facility, and have a fully equipped fabrication facility.

Financial Institutions

- Bank of Nova Scotia
- Community Savings Credit Union
- Royal Bank of Canada
- Alberta Treasury Branch

Education

Innisfail is part of the Chinook's Edge Regional Division #5, headquartered in Innisfail [Tel: 403-227-4272].

Daycare/Nursery

Innisfail Day Nursery Ltd.

Innisfail Family Day Home Society

Public Schools

Schools in Innisfail include:

- John Wilson Elementary School [K-4]
- Chinook Centre School
- Innisfail Junior/Senior High School [8-12]
- and now the new Middle School [5-7], which opened for the 2003-2004 school year.

John Wilson School was the first school to offer year-round education and 10-month calendar programs. The school is proud of its open and receptive environment, and the proactive involvement of parents through initiatives such as the Parents Advisory Association. Programs are offered in Kids Helping Kids Peer Support, special education, intramurals, etc. It also has an award-winning band program.

The mission of Innisfail Junior/Senior High School and Innisfail Middle School is to provide high quality educational services in a clean, caring and secure environment. The school offers a wide range of programs including special education, an integrated occupations program, a self-directed learning program, as well as an extensive extra-curricular program. The music program has established a reputation of excellence in Alberta. The drama department consistently presents excellent plays and musicals. A broad athletic program is also offered.

Separate Schools

Red Deer Catholic Regional Division established the Innisfail Roman Catholic Separate School District No. 604 in October 2001.

Emergency Services

Town of Innisfail is serviced by E-911

Fire Protection

Innisfail is served by a volunteer fire department that has 1 tanker truck, 3 pumpers, and an emergency rescue unit [Tel: 403-227-3333].

Police Services

Innisfail is served by a local detachment of the Royal Canadian Mounted Police [RCMP] [Tel: 403-227-3341]. Innisfail is also the headquarters for the force's national dog training centre and the area's Highway Patrol.

Ambulance Services

Local ambulance service as well as air ambulance service is available [Tel: 403-227-3272]. A STARS Helicopter landing site is located immediately across the street from the Innisfail Health Care Centre.

Health Care

The Innisfail Health Care Centre is a fully modern active and extended care facility. The facility has 20 acute care beds and 80 extended care beds. The facility has an emergency ward, day surgery, x-ray and laboratory departments. The hospital was built in 1984 and underwent an expansion in 1992/93.

Innisfail has 2 medical clinics with 9 medical doctors serving the community and surrounding area. Also, there are 3 dental offices with 4 dentists providing services from cleaning to dental surgery. Other services include 1 optometrists, 4 chiropractors, 2 reflexologists, 1 physio-therapist and 4 massage therapists.

The David Thompson Regional Health Authority provides community based services in community health nursing, home care, health promotion, environmental health and speech-language-hearing programs.

Dodd's Lake Manor, Innisfail Country Lodge, Snowberry Downs Condominium, Poplar Grove Court and Autumn Glen Lodge provide seniors who are no longer interested in maintaining their own homes with an alternative housing choice.

Key Contacts for Business Development

Municipal

Town of Innisfail

4943 - 53 Street Innisfail, Alberta

T4G 1A1

Tel: 403-227-3376

Fax: 403-227-4045

E-Mail:townhall@telusplanet.net

Website:www.townofinnisfail.com

Mayor

Ken Graham

Councillors

- Patricia Churchill
- Gary Macdonald
- Don Shygera
- Jason Heistad
- Derek Baird

- Tracey Walker

Town Manager

Dale P. Mather

Email: matherd@telusplanet.net

Director of Operations

Tim Ainscough, P.Eng

Email: towneng@telusplanet.net

Provincial (Updated May 2006)

Alberta Economic Development

2nd Floor, Provincial Building

4920 - 51 Street

Red Deer, Alberta

T4N 6K8

Tel: 403-340-5300

Fax: 403-340-5231

Dawna Allard, *Regional Manager*

dawna.allard@gov.ab.ca

Lisa Houle, *Regional Project Officer*

lisa.houle@gov.ab.ca

Honorable Luke Ouellette

Member of the Legislative Assembly [MLA]

Innisfail-Sylvan Lake Constituency

Constituency Office

Eastgate Mall #18, 4804 42 Avenue

Innisfail, AB

T4G 1T4

Phone: (403) 227-1500

Toll Free: 1-888-655-2535

Fax: (403) 227-5350

innisfail.sylvanlake@assembly.ab.ca

Legislature Office

#319 Legislature Building

10800 - 97 Avenue

Edmonton, AB

T5K 2B6

Phone: (780) 422-7355

Fax: (780) 422-5279

Federal (Updated May 2006)

Member of Parliament-Red Deer, Alberta

MILLS, Robert (Bob) (Conservative)

Parliamentary Address

House of Commons

Ottawa, Ontario

K1A 0A6

Telephone: (613) 995-0590

Fax: (613) 995-6831

E-Mail: Mills.B@parl.gc.ca

Constituency Address
 4921 - 47th Street
 Red Deer, Alberta
 T4N 1R4
 Telephone: (403) 347-7426 1-800-667-0523
 Fax: (403) 347-7423
 TTY:
 E-Mail: bmillsmp@telusplanet.net

Location

The Town of Innisfail is strategically located in central Alberta along the Highway 2 corridor, within the County of Red Deer, just a few minutes south of Red Deer. Innisfail is 118 km north of Calgary and 173 km south of Edmonton.

Post Secondary Education

Both Red Deer College and Olds College are within commuting distance of Innisfail. Red Deer College offers a wide range of certificate, diploma and transfer courses, while Olds College is an agricultural college.

Taxation

	<u>Residential/Farmland</u>	<u>Non-Residential</u>
2005		
Municipal Tax Rate	8.9600	8.9600
Education - Alberta School Foundation Fund Tax Rate	4.3849	6.1462
Education Opted Out Tax Rate	4.3849	6.1462

Mill Rates

[1997]

Residential-Public 15.41

Non-Residential-Public 22.67

[1998]

Residential-Public 15.5

Non-Residential-Public 18.8

[1999]

Residential-Public 15.25

Non-Residential-Public 19.03

[2000]

Residential - Public 15.00

Non-Residential - Public 18.96

[2001]

Residential - Public 14.20

Non-Residential - Public 17.30

[2002]

Residential - Public 13.93

Non-Residential - Public 16.66

[2003]

Residential - Public 13.84

Non-Residential - Public 16.49

[2004]

Residential - Public 13.67

Non-Residential - Public 16.17

[2005]

Residential - Public 13.34

Non-Residential - Public 15.11

Transportation

Air Service

-Air service is available from the Innisfail Airport, Red Deer Industrial Airport and the Calgary International Airport.

Rail Service

-Innisfail is served by a C.P.R. main line. Spur trackage is available.

Highways

-Innisfail is located on the intersection of Highway 2, the main north-south highway linking Calgary and Edmonton, and Highway 54, the east-west highway servicing Spruce View, Caroline, and the West Country. Secondary Highway 590 runs east of Innisfail to connect with Highway 21.

Trucking Firms

-A number of firms operate out of Innisfail, including Loadmasters International, serving the needs of the community and area.

Bus Services

-Greyhound Bus Lines provides regularly scheduled inter-community service.

Couriers and Taxis

-Loomis and Purolator Couriers, Parcel Way, Greyhound Courier Express. Innisfail Taxi and Royal Cabs, and Western Cabs provide local taxi service.

Utilities

Electrical Power

Aquila Networks Canada

Tel: 310-WIRE (9473)

Natural Gas

Atco Gas

4912 - 52 Street I

Innisfail, Alberta

Tel: 403-227-3618

Telephone

Telus

4831 - 51 Street

Red Deer, Alberta

Tel: 403-342-3611

Water Supply

-The Town of Innisfail provides water for the community. The user rate is a minimum charge of \$11.33 per billing or a user fee of \$1.10 per cubic meter consumed.

Waste Management

-The Town of Innisfail provides sewage treatment services for the community. Sewage is assessed at 70% of water charges or \$7.91 on minimum water consumption.

-Garbage collection costs for residential users is \$15.00 per month, while those for commercial users is based on volume.

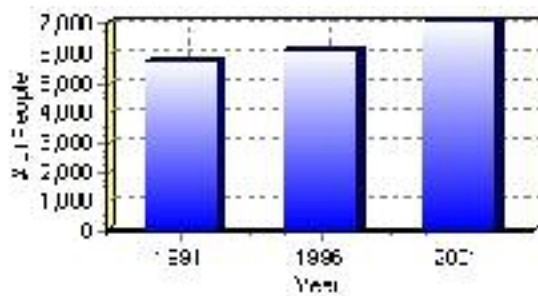
Population

Total Population

Population 2004*	7,090
Population 2003*	6,958
Population 2002*	6,958
Population 2001**	6,930
Population 2000*	6,789
Population 1996**	6,116
Population 1991**	5,700
Population % change 1991-1996	6.80%
Population % change 1996-2001	12.10%

* Source: Official Population List, Alberta Municipal Affairs
** Source: Statistics Canada 1991, 1996, & 2001 Census

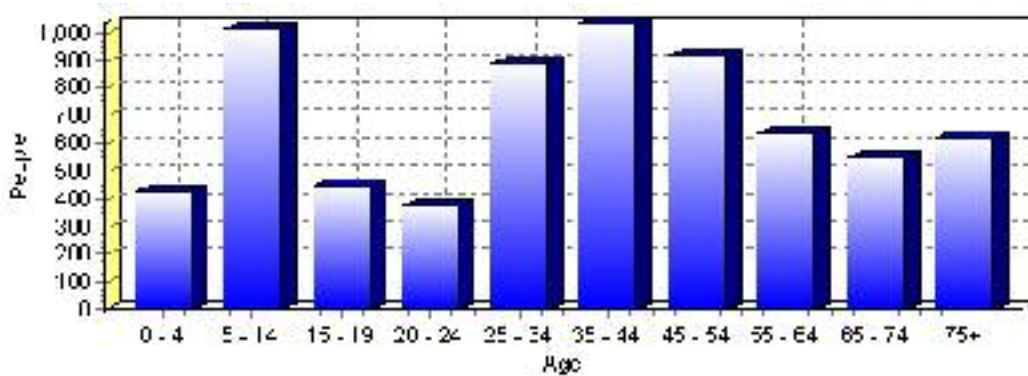
Total Population 1991-2001



Population by Age and Gender	1996 Male	1996 Female	1996 Total	2001 Male	2001 Female	2001 Total
Age 0 - 4	195	200	395	210	215	425
Age 5 - 14	465	490	955	500	515	1,015
Age 15 - 19	230	225	455	245	205	450
Age 20 - 24	155	170	325	195	180	375
Age 25 - 34	410	405	815	430	460	890
Age 35 - 44	475	500	975	525	510	1,035
Age 45 - 54	345	330	675	440	480	920
Age 55 - 64	245	275	520	300	335	635
Age 65 - 74	230	270	500	265	285	550
Age 75 and older	205	295	500	255	370	625
Total All Persons	2,950	3,165	6,115	3,370	3,560	6,930

Source: Statistics Canada 1996 & 2001 Census (numbers may not add up due to rounding)

Innisfail Population by Age Group (2001)

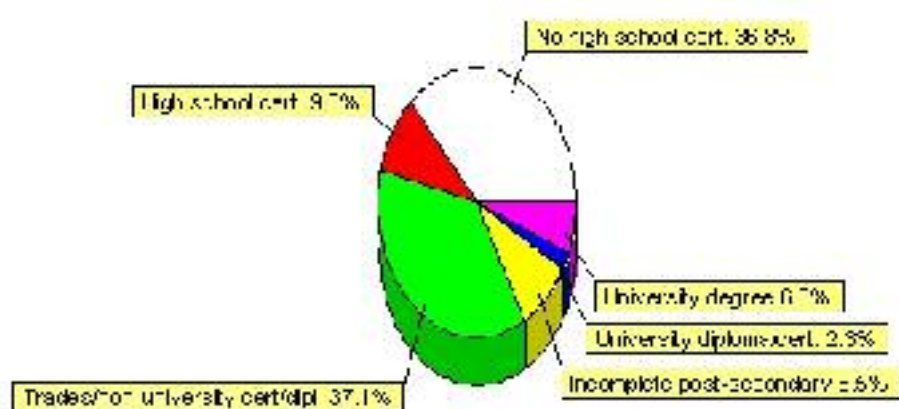


Education Statistics

Highest level of schooling for Population 20yrs and older	2001	%
People without high school certificates	1,770	36.80%
People with high school certificates	445	9.25%
People with trades or non-university certificate or diploma	1,785	37.11%
People with post-secondary education (not completed)	410	8.52%
People with university diploma/certificate	110	2.29%
People with university degree	290	6.03%
Total Population 20 years and older	4,810	100.00%

Source: Statistics Canada 2001 Census (numbers may not add up due to rounding)

Innisfail Highest Level of Schooling 2001



Population with Post Secondary Qualifications	1996	%	2001	%
Agriculture and biological sciences	85	5.11%	225	10.25%
Commerce, management and business administration	310	18.62%	420	19.13%
Educational, recreational and counseling services	215	12.91%	250	11.39%
Engineering and applied science tech. and trades	530	31.83%	605	27.56%
Engineering and applied sciences	10	0.60%	15	0.68%
Fine and applied arts	130	7.81%	145	6.61%
Health professionals, science and technologies	255	15.32%	340	15.49%
Humanities and related fields	35	2.10%	45	2.05%
Mathematics and physical sciences	25	1.50%	10	0.46%
Social sciences and related fields	70	4.20%	145	6.61%
Other and/or no specialization	0	0.00%	0	0.00%
Total people with post secondary qualifications	1,665	100.00%	2,195	100.00%
Females with post-secondary qualifications	810	48.65%	1,095	49.89%
Males with post-secondary qualifications	855	51.35%	1,100	50.11%

Source: Statistics Canada 1996 & 2001 Census (numbers may not add up due to rounding)

Labour Force

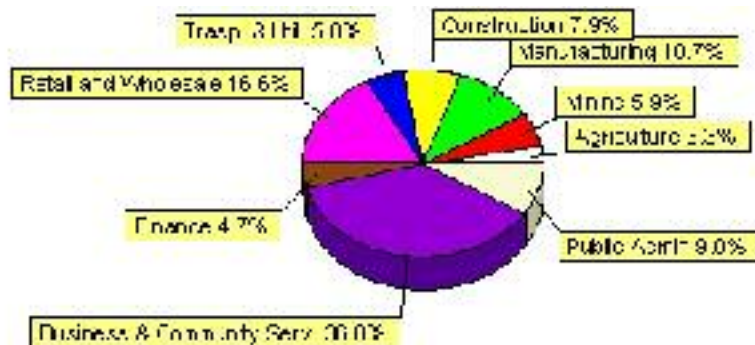
Labour force by activity	1996	2001
In the labour force, both sexes	3,020	3,505
Not in the labour force, both sexes	1,550	1,750
Total population 15 and over	4,570	5,255
Employed, both sexes	2,790	3,320
Unemployed, both sexes	230	190
Participation rate, both sexes	66.00%	67.00%
Unemployment rate, both sexes	8.00%	5.00%

Source: Statistics Canada 1996 & 2001 Census (numbers may not add up due to rounding)

Labour Force by Industry Division	1996	% of total	2001	% of total
Agriculture	85	2.85%	115	3.29%
Mining	205	6.88%	205	5.87%
Manufacturing	390	13.09%	375	10.73%
Construction	165	5.54%	275	7.87%
Transportation. & Utilities	130	4.36%	175	5.01%
Retail and Wholesale	540	18.12%	580	16.60%
Finance	140	4.70%	165	4.72%
Business & Community Services	1,010	33.89%	1,285	36.77%
Public Administration	165	5.54%	315	9.01%
Total All Industries	2,980	100.00%	3,495	100.00%

Source: Statistics Canada 1996 & 2001 Census (numbers may not add up due to rounding)

Innisfail Labour Force By Industry - 2001



Labour Force by Major Occupational Groups	1996	%	2001	%
Management occupations	325	10.92%	315	9.01%
Business, Finances and administrative occupations	380	12.77%	485	13.88%
Natural and applied sciences and related occupations	75	2.52%	115	3.29%
Health occupations	160	5.38%	195	5.58%
Occupations in social science; education; government and religion	180	6.05%	260	7.44%
Occupations in art; culture; recreation and sport	40	1.34%	45	1.29%

Sales and service occupations	910	30.59%	970	27.75%
Trades; transport; equipment operators and related occupations	475	15.97%	655	18.74%
Occupations unique to primary industry	140	4.71%	210	6.01%
Occupations unique to processing; manufacturing and utilities	290	9.75%	245	7.01%
Occupations not elsewhere classified	45	1.51%	15	0.43%
Total - All Occupations (major groups)	2,975	100.00%	3,495	100.00%
Females - All Occupations	1,405	47.23%	1,630	46.64%
Males - All Occupations	1,570	52.77%	1,860	53.22%

Source: Statistics Canada 1996 & 2001 Census (numbers may not add up due to rounding)

Income

Family Income (Number of Families)	1996	%	2001	%
less than \$19,999	90	6.12%	120	8.05%
\$20,000 - \$39,999	465	31.63%	510	34.23%
\$40,000 - \$59,999	385	26.19%	535	35.91%
\$60,000 and over	530	36.05%	455	30.54%
Total number of families	1,470	100.00%	1,620	108.72%
Average family income	\$52,929		\$58,942	
Median family income	\$47,934		\$53,132	

Source: Statistics Canada 1996 & 2001 Census (numbers may not add up due to rounding)

Household Income (Number of Households)	1996	%	2001	%
less than \$19,999	555	24.18%	360	13.61%
\$20,000 - \$39,999	630	27.45%	745	28.17%
\$40,000 - \$59,999	505	22.00%	650	24.57%
\$60,000 and over	175	7.63%	885	33.46%
Total number of households	2,295	100.00%	2,645	100.00%
Average household income	\$43,293		\$52,330	
Median household income	\$38,724		\$45,489	

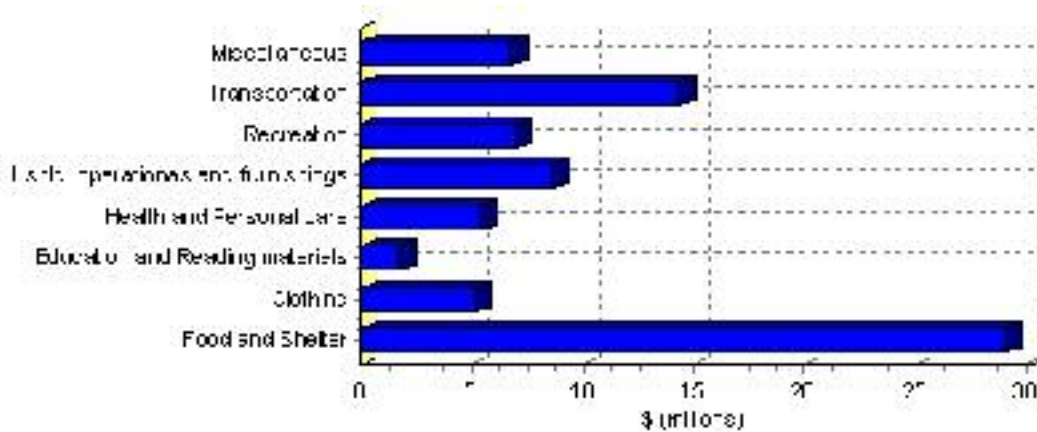
Source: Statistics Canada 1996 & 2001 Census (numbers may not add up due to rounding)

Family Expenditure

Expenditure Category	1992	% of total	1996	% of total
Food and Shelter	\$23,815,000	36.96%	\$29,077,854	37.24%
Clothing	\$4,482,220	6.96%	\$5,153,804	6.60%
Education and Reading materials	\$1,401,530	2.18%	\$1,718,325	2.20%
Health and Personal care	\$4,022,515	6.24%	\$5,389,386	6.90%
Hshld. operations and furnishings	\$7,095,345	11.01%	\$8,635,992	11.06%
Recreation	\$5,315,915	8.25%	\$6,962,348	8.92%
Transportation	\$13,216,740	20.51%	\$14,380,722	18.42%
Miscellaneous	\$5,068,580	7.87%	\$6,760,229	8.66%
Total Current Consumption	\$64,435,150	100.00%	\$78,078,660	100.00%
Total # of Households	2,110		2,292	
Average Consumption per Household	\$30,538		\$34,066	

Source: Statistics Canada Family Expenditure Survey 1992 & 1996 (numbers may not add up due to rounding).

Innisfail Family Expenditures (1996)

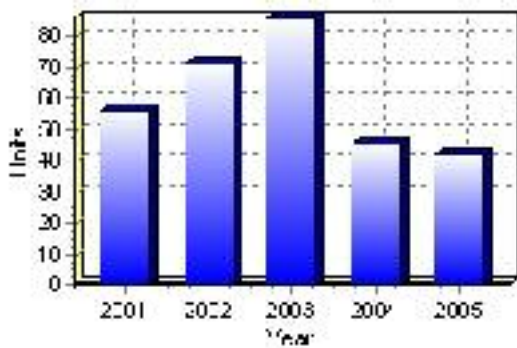


Building Permits

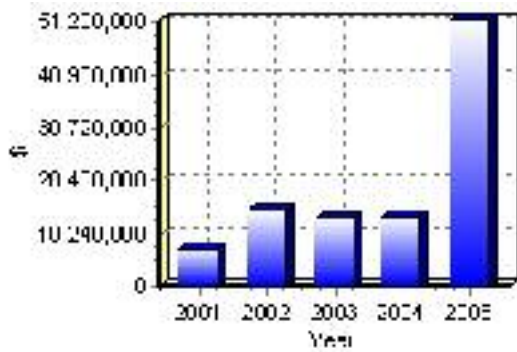
Total Building Permit Values	2001	2002	2003	2004	2005
Building Permits Value, Commercial	\$2,067,000	\$1,772,000	\$2,103,000	\$4,961,000	\$5,786,000
Building Permits Value, Industrial	\$455,000	\$148,000	\$1,123,000	\$3,260,000	\$38,617,000
Building Permits Value, Institutional	\$8,000	\$7,106,000	\$416,000	\$20,000	\$1,187,000
Building Permits Value, Residential	\$4,702,000	\$5,717,000	\$9,534,000	\$5,272,000	\$6,055,000
Building Permits Value, Total	\$7,232,000	\$14,743,000	\$13,176,000	\$13,513,000	\$51,645,000
Total Housing Starts	56	71	86	45	42

Source: Statistics Canada 2000-2004 Building Permits (numbers may not add up due to rounding)

Total Housing Starts



Value of Building Permits



Dwellings

Occupied Private Dwellings by Type	1996	% of total	2001	% of total
Apartments	340	14.81%	465	17.58%
Detached Duplexes	15	0.65%	5	0.19%
Movable Dwellings	100	4.36%	160	6.05%
Other single attached house	10	0.44%	15	0.57%
Row and semi-detached house	340	14.81%	335	12.67%
Single-detached house	1,490	64.92%	1,675	63.33%
Total number of occupied private dwellings	2,295	100.00%	2,645	100.00%
Private dwellings, owned	1,640	71.46%	1,945	73.53%
Private Dwellings, rented	650	28.32%	700	26.47%

Source: Statistics Canada 1996 & 2001 Census (numbers may not add up due to rounding)

Private Dwellings by Period of Construction	# of Dwellings	% of total
Period of construction, before 1946	185	7.01%
Period of construction, 1946 - 1960	315	11.93%
Period of construction, 1961 - 1970	265	10.04%
Period of construction, 1971 - 1980	780	29.55%
Period of construction, 1981 - 1990	490	18.56%
Period of construction, 1991 - 2001	605	22.92%
Total number of private dwellings constructed	2,640	100.00%

Source: Statistics Canada 2001 Census (numbers may not add up due to rounding)

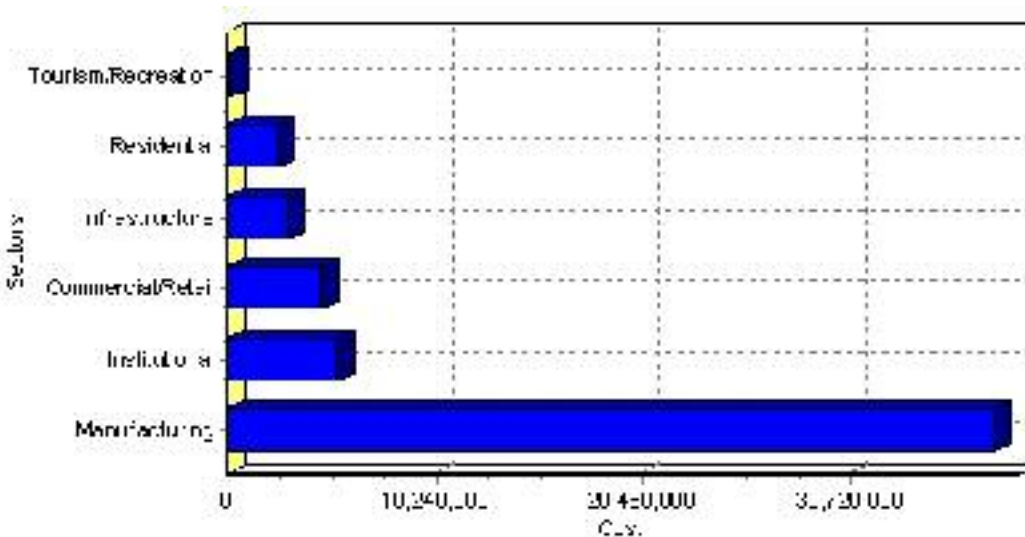
Projects

Summary of Projects in Innisfail as of September 2006

Project Sector	Number of Projects	Project Cost
Manufacturing	3	\$37,883,000
Institutional	3	\$5,400,000
Commercial/Retail	3	\$4,620,000
Infrastructure	5	\$2,980,000
Residential	2	\$2,509,150
Tourism/Recreation	1	\$160,000
Total	17	\$53,552,150

This inventory lists projects in Alberta that have recently been completed, are under construction, or are proposed to start construction. Not all projects are listed due to reasons of confidentiality and/or due to information not being available at the time of printing. Project data is obtained from public information sources, where possible, this data has been verified with the project proponent/developer, users of the Inventory may wish to confirm project data with the proponent/developer. The inventory does not breakdown project expenditures by any given year. The cost of a project is the value of expenditures expected over all phases of project construction, which may span over two or more years. Cost of projects listed in the Inventory are estimated values only. Source: Alberta Economic Development, 2004.

Value of Projects by Sector (as of September 2006)



Project Status	Number of Projects	Project Cost
Announced	10	\$10,109,150
Proposed	3	\$38,760,000
Under Construction	4	\$4,683,000
Total	17	\$53,552,150

This inventory lists projects in Alberta that have recently been completed, are under construction, or are proposed to start construction. Not all projects are listed due to reasons of confidentiality and/or due to information not being available at the time of printing. Project data is obtained from public information sources, where possible, this data has been verified with the project proponent/developer, users of the Inventory may wish to confirm project data with the proponent/developer. The inventory does not breakdown project expenditures by any given year. The cost of a project is the value of expenditures expected over all phases of project construction, which may span over two or more years. Cost of projects listed in the Inventory are estimated values only. Source: Alberta Economic Development, 2004.

Largest Projects in Innisfail as of September 2006

Company Name	Project Description	Project Location	Project Cost	Construction Schedule	Status
Johns Manville Corp.	Facility Expansion	Innisfail	\$36,000,000	-	Proposed
Legacy West Partners Ltd.	Innisfail Country Lodge Expansion	Innisfail	\$2,600,000	-	Proposed
Span West Construction	CONDOMINIUM COMPLEX	Innisfail	\$2,400,000	2006-2007	Announced
Pier Developments Ltd.	COMMERCIAL CAR WASH FACILITY	Innisfail	\$2,200,000	2006-2007	Announced
Town of Innisfail	Water Line Replacement	Innisfail	\$1,850,000	2006-2006	Announced
RCMP Police Dog Service Training Centre	New Administration Building	Innisfail	\$1,800,000	2006-2006	Under Construction
Mueller Warden Projects	TWO STOREY MOTEL	Innisfail	\$1,520,000	2006-2006	Announced
Poplar Grove Welding & Finishing	MANUFACTURING FACILITY	Innisfail	\$1,170,000	2006-2007	Under Construction
John Wilson Elementary School	BUILDING RENOVATIONS - ADDITION	Innisfail	\$1,000,000	2006-2007	Under Construction
Boston Pizza	New Building	Innisfail	\$900,000	2006-2006	Announced

Disclaimer: Information in this profile has been provided from a variety of external sources. Although every effort has been made to ensure the accuracy, currency and reliability of the content and data, AlbertaFirst.com Ltd. accepts no responsibility in this regard.

© AlbertaFirst.com Ltd., 2006.