

# High Prairie

<http://www.highprairie.ca>

## Welcome

The Town of High Prairie is a thriving community of just under 3,000 people located within the [Municipal District of Big Lakes](#) near the west end of Lesser Slave Lake.

High Prairie presents an exceptionally attractive living environment with the advantages of a modern urban community combined with those of a vast natural playground. To make your journey through the profile easier, a directory has been included below. So if you need to get directly to a topic of interest you can, but please also take the time to leisurely scroll through the entire profile.



## Area Overview

Surrounded by boreal forest and open plains yielding rich farmland, High Prairie enjoys a dry, sub-humid climate with warm summers and cool winters. High Prairie and, its rural neighbor, the Municipal District of Big Lakes share a glacial-age history that has left in its wake many unique ecological sites, reminders of Lesser Slave Lake's former vastness.

These special attractions, along with an environment rich with beauty and natural resources, are conveniently accessed by a system of air, rail and road networks that help cast High Prairie as a focal point for goods and services distribution.

High Prairie is a short 20-minute drive from the western end of Lesser Slave Lake; which is the largest lake entirely within Alberta's boundaries – 108 kilometers long by 19 kilometers wide (widest point). World-class fishing takes place on Lesser Slave Lake (Walleye, Northern Pike, Perch), with several winter and summer derbies held annually.



## Climate

Temperature	Jan	Feb	Mar	Apr	May	Jun	Jul	Aug	Sep	Oct	Nov	Dec
Daily Mean(°C)	-14.5	-11.7	-4.7	3.3	9.7	13.6	15.6	14.6	9.2	3.8	-6.1	-12.9
Std. Dev.	4.9	5.3	3.6	2.1	1.2	0.9	1.0	1.6	1.8	1.5	4.0	4.4
Daily Maximum	-9.4	-5.9	1.2	9.4	16.1	19.3	21.2	20.3	14.6	9.1	-1.6	-8.2
Daily Minimum	-19.6	-17.4	-10.6	-2.9	3.3	7.9	10.0	8.8	3.7	-1.5	-10.5	-17.7
Rainfall (mm)	0.6	1.0	1.7	12.1	40.9	88.2	95.6	72.4	48.8	18.0	3.1	2.0
Snowfall (cm)	29.9	21.2	20.8	10.4	2.7	0.0	0.0	0.0	2.2	9.7	19.7	29.8

Average Number of Frost Free Days Annually: **92** Average Number of Hours of Sunshine Annually: **2175**

## Community Services

[High Prairie offers a wide range of community services.](#)

**For further information** please contact the Town of High Prairie/M.D. of Big Lakes Family & Communities Support Services (FCSS) Coordinator at :**780 523-5955**.

Click [here](#) to learn more about the FCSS Program

Click [here](#) for more information about Community Services in, and around, High Prairie.

## Community Lifestyle



On any trip through the Town of High Prairie, it's easy to see that the citizens care about their community. A dynamic, creative atmosphere invites visitors and residents, alike, to sample the fruits of small town life.

In addition to winning the 2002 Provincial Communities in Bloom competition, High Prairie is renowned for its beautiful Christmas light displays. High Prairie's sparkle is a tribute to true citizenship. The talents and hard work of a community that welcomes cultural diversity have resulted in an impressive variety of social supports and recreational choices, driven by a dedicated volunteer sector.

An educational system that promotes life-long learning and healthcare facilities that subscribe to the highest standards enhance the community's appeal for all age groups.

## Recreation



Leisure and fitness seekers of all kinds have an enticing number of choices to satisfy their recreational appetites. Within the town limits are a multi-purpose arena, tennis courts, outdoor swimming pool, splash pool, private fitness centres and seniors' drop-in centre. An extensive paved trail system, along with ball diamonds and picnic areas, are well utilized in a natural setting along the West Prairie River.

June 2005 will see the completion of the High Prairie Regional Aquatic Centre. It will host a leisure pool with zero depth entry, a 5-lane competitive pool, kids' play zone, and waterslide, among other amenities. An indoor riding arena, two golf courses, and

numerous private and public campgrounds are additional area attractions, along with nearby winter pursuits of cross-country and downhill skiing and snowboarding. And, of course, highlights for many people are found in the numerous water sports and shoreline activities to be enjoyed at nearby lakes in all seasons.

July brings on High Prairie's biggest event of the summer season - the Elks Pro Rodeo. Spectators can watch some of the finest professional male and female rodeo competitors in the world. High Prairie is home to the Golden Walleye Classic on Lesser Slave Lake, Canada's richest and North American's largest fishing tournament.

### Special Annual Events/Attractions

---

BULL " A" RAMA	March
North Country Fair	June
High Prairie Amateur Rodeo	May Long Weekend
Elks Pro Rodeo	1st Week in May
Pioneer Thresherman	Canada Day
High Prairie Golf Open	August
Golden Walleye Classic	August
Joussard Walleye Tournament	August
Agricultural Fair	August
Winter Light Up	End of November

---



## Economic Base

### Economic Strengths

Steady growth has characterized High Prairie's economic status throughout the past half-century. Predictions suggest this is not likely to change, although the economic drivers may shift in balance. Traditionally dependent on agriculture and forestry as its mainstay industries, the town is planning to capitalize on the expected growth of petroleum and tourism industry.



New oil and gas discoveries on the perimeter of High Prairie and heavy oil development north and west in the “Seal Lake” area have already generated increased economic activity. The town hopes to stimulate this promising trend by enhancing infrastructure and marketing affordable land for development. At the same time, the growing popularity of the region as a family holiday destination makes High Prairie an important centre for serving the needs of travelers.

Coupled with its traditional role as a service centre for a sizable population in surrounding hamlets, First Nations communities and Métis settlements, this increasing focus on High Prairie’s amenities makes it an entrepreneur’s paradise.

### **Industry Profiles The Regional Forestry Industry**

Forestry is High Prairie’s single largest employment source. Buchanan Lumber’s sawmill, located in High Prairie, founded in 1946, and Tolko Industries’ oriented strand board mill, constructed in 1992, has had a significant economic impact on the community.

Timber resources are expected to continue to play a major role in the regional economy. Alberta Land and Forest’s regional office in High Prairie helps to manage the Martin Hills Forest Area, which covers approximately 5.62 million hectares of forest and range crown land. The area is comprised of number of natural ecological sub regions inclusive of boreal highlands, central mixed wood, and dry mixed wood, lower and upper foothills. The Annual Allowable Cut (AAC) in the Lesser Slave Lake area is approximately 4 million m<sup>3</sup>.

### **The Oil and Gas Industry**

Optimism runs high in terms of the petroleum industry’s future contributions to High Prairie’s fiscal health. Oil and gas activities have been a large part of the economic picture for the past several decades, as seismic crews and drilling operators searched for natural gas and oil reserves.

Many service and support businesses were established or expanded to accommodate this sector. Recent oil and gas discoveries in areas surrounding High Prairie, including Seal Lake north of High Prairie, translate into exciting opportunities for attracting oil company branch offices to town.

The town is working to entice complementary service companies and secondary industries, to locate in High Prairie with the goal of establishing a regional service centre for the Oil & Gas industry.

### **The Agriculture Industry**



The farming area surrounding High Prairie includes some 67,000 hectares of prime agricultural land. Favourable growing conditions generally produce excellent quality wheat, barley, oats, and canola, seed and forage crops. In addition, a robust livestock industry is supported on this versatile land base.

High Prairie reaps the benefits of farming activity through provision of goods and services to producers. Although the relative prosperity of this sector is directly tied to commodity prices, the land’s agricultural value is expected to remain strong for years to come.

Soil Classification for this area is class 3 and class 4. Class 3 and 4 are considered capable of sustained use for cultivated field crops. Sandy soils located around the shores of Lesser Slave Lake, Lesser Slave River, and in the Smith area are more suitable for

shrubs, Jack Pines, and Indian Rice Grass.

Those sandy soils are acetic soils that produce fruit plants such as blueberry and bearberry. Source: The Canada Land Inventory Soil Capability for Agriculture; Alberta Sustainable Resource Development

### **The Retail Service Industry**

High Prairie has a full complement of retail goods and services. Should residents want expanded shopping options on occasion, they are only approximately one hour west of Slave Lake and two hours east of Grande Prairie. Also important is the fact that High Prairie is only 3.5 hours northwest of Edmonton.

### **The Tourism Industry**



Just 20 minutes from the western shores of Lesser Slave Lake, High Prairie is primed and ready to meet the growing service needs of travelers to this tourist haven. Miles of sandy beaches and a myriad of water sports, along with special events such as the annual Golden Walleye Classic fishing tournament, captivate visitors.

Private resorts, as well as Hilliard's Bay Provincial Park, which boasts world-class open water fishing, provide camping. Winagami Lake Provincial Park, just north of High Prairie, is gaining a reputation as a birder's paradise, as is nearby Kimiwan Lake, the meeting point of three major bird migration paths. Winagami is also home to the Jackpines Wildland Park, an eco-site unique to northwestern Alberta and a fascinating locale in which to hike. Back to [Directory](#)

## **Economic Facts**

### **Market Research & Demographic Information**

- [Price Comparison Survey](#) - Completed by [Alberta Economic Development](#) in May 2004 Statistics Canada information is located at the end of this profile. Click [here](#) if you would like to view this information now. **Further In-depth Information**
- [Municipal Profiles](#) developed by [Alberta's Ministry of Municipal Affairs](#)
- [Alberta Weekly Economic Highlights](#) developed by [Alberta Economic Development](#)
- [Alberta Economic Outlook](#) developed by [Alberta Economic Development](#)
- [Alberta Export and Trade](#) developed by [Alberta Economic Development](#)
- [Special Reports](#) developed by [Alberta Economic Development](#)
- [Tourism Reports](#) developed by [Alberta Economic Development](#)
- [Alberta Finance Statistics](#) also contains much information which may be useful.

### **Business Licensing and Development Permits**

Town of High Prairie  
Box 179  
High Prairie, Alberta  
T0G 1E0  
Tel: 780-523-3388  
Fax: 780-523-5930  
E-mail: [admin@highprairie.ca](mailto:admin@highprairie.ca)  
Website: [www.highprairie.ca](http://www.highprairie.ca)  
Click here for a list of [Business Support Services](#)

### **Property Value Estimates**

---

<b>Zoning - Lots Only</b>	<b>Approximate Price</b>
Residential	\$25,000 - \$45,000
Industrial	\$5,000 - \$100,000 /acre
Commercial-Highway	\$50,000
Commercial-Downtown	\$20,000 - \$40,000

---

---

<b>Zoning</b>	<b>Type</b>	<b>Approximate Price</b>
Residential	1350 ft2 Three Bedroom Bungalow	\$120,000 - \$180,000
Industrial	Lease	\$6.50 - \$9.00/square foot
Commercial	Lease	\$7.00 - \$15.00/square foot

---

\*Information provided by various realtors in High Prairie

### **Major Regional Employers Private Sector**

---

Buchanan Lumber	Sawmill & Logging
Charrois Motor Products	New & Used Vehicles
Cox Brothers Contracting	Sand & Gravel Hauling
Emerald Trucking Enterprises	Tank Truck Service
Freson's IGA	Groceries & Household Items
Gem Grant Energy & Maintenance	Oilfield Maintenance & Construction
Monahan Ford	New/Used Car & Truck Sales
Northwest Machine & Welding Ltd.	Welding, Machining
Peyre Farm Equipment	Farm Machinery Sales & Repair
Phoenix Foest Products	Sawmill, Planer
Pioneer Home Hardware	Hardware, Building Supplies
Shadow Creek Forest Products	Forest Products
Tolko Industries Ltd.	Oriented Strand Board Mill (OSB)
Torchinsky Engineering Ltd.	Engineering
Trigil Energy Inc.	Oilfield Maintenance
Williscroft RJ Construction Ltd.	Logging & Oilfield Maintenance

---

### **Public Sector**

---

Peace Country Hills Region 8	Regional Health Services
------------------------------	--------------------------

High Prairie Health Complex	Hospital
Town of High Prairie	Municipal Administration
Municipal District of Big Lakes	Municipal Administration
High Prairie School Division	Schools and Schools Administration
Living Waters Catholic Regional Division	Schools and Schools Administration

### **Financial Institutions**

Alberta Treasury Branch Financial	(780) 523-5201
Caisse Horizon Credit Union	(780) 523-2667
RBC Royal Bank	(780) 523-3381
TD Canada Trust	(780) 523-4591
Lesser Slave Lake Community Development Corporation	(800) 622-7128

### **National Franchises/Companies**

These are some of the national franchises/companies that have located in High Prairie.

Best Western	Subway	KFC	A&W
IGA	Super A Foods	SAAN	Fields
Fountain Tire	Kal Tire	Home Hardware	True Value Hardware
Rexall Drugs	Mac's Convenience Store	Napa Autoparts	Circuit City

## **Education**

There are four school divisions represented in High Prairie and area.

High Prairie School Division is the largest, but also present are Peace Wapiti School Board, and Northland School Division. Holy Family Catholic Regional Division is the separate school division servicing High Prairie.

Most Schools follow the AISI (Alberta Initiative for School Improvement) curriculum; E.W. Pratt also follows the Advanced, General and Integrated Occupational Programs Curriculum.

<b>School</b>	<b>Location</b>	<b>Phone Number</b>	<b>Grades</b>
High Prairie Elementary	High Prairie	(780) 523-4531	K – Grade 6
Prairie River Junior High	High Prairie	(780) 523-4418	Grades 7 – 9
E.W. Pratt High	High Prairie	(780) 523-3813	Grades 10 - 12
Prairie View Outreach	High Prairie	(780) 523-4200	Grades 7 – 12
Peace Academy (Online)	Spirit River	(780) 864-3741	Grades 4-12
Bishop Routhier	Peavine	(780) 624-2060	ECS - Grade 6
St. Andrew's Catholic	High Prairie	(780) 523-4595	K - Grade 12
Holy Family Cyber High	McLennan	(780) 523-5237	Grades 7 - 12
St. Francis Holistic Learning	High Prairie	(780) 523-6665	Ages 12 - 17

## **Emergency Services**

### **Emergency DIAL 911 Fire Protection**

24 Hour Service for High Prairie and area residents within the Municipal District of Big Lakes who don't have a volunteer fire



department.

### **High Prairie Fire Department**

---

General Calls:	(780) 523-3525
Fire Chief:	Ken Melnyk
Deputy Fire Chief:	Robert Wishart
31 Volunteer Fire Fighters	

---

### **Ambulance Service**

High Prairie Ambulance Services Town of High Prairie and area residents (half-way to McLennen on the West and Spruce Point Park turn-off to the East) *High Prairie Ambulance Service*

---

Office:	(780) 523-6426
General Calls:	(780) 523-2542
Emergency Calls:	<b>911</b>

---

### **Police and By-Law Enforcement**

*Royal Canadian Mounted Police (RCMP)*  
5400 53 Avenue  
High Prairie, AB  
T0G 1E0

---

General Calls:	(780) 523-3370
Personnel:	16 members
Emergency Calls:	<b>911</b>

---

### **Town of High Prairie – Bylaw Enforcement Officer**

---

Phone Number:	(780) 523-3388
Fax Number:	(780) 523-5232

---

## **Health Care**

High Prairie is serviced by the [Peace Country Health Region](#).

View the website for in-depth health service information.  
While you're there, check out the [High Prairie Health Complex](#).

Other services in High Prairie include 9 doctors, 2 dentists, 2 medical clinics, 1 health unit, 1 nursing home, and 35 continuing care beds. Air Ambulance is available.

## **Key Contacts for Business Development**



**Town of High Prairie**

Box 179  
High Prairie, Alberta  
T0G 1E0  
Tel: 780-523-3388  
Fax: 780-523-5930  
E-mail: [admin@highprairie.ca](mailto:admin@highprairie.ca)  
Website: [www.highprairie.ca](http://www.highprairie.ca)

**Mayor:** John Brodrick  
**Acting Town Manager:** [G.M. Blaikie](#)

***Alberta Economic Development: Edson Office***

111 Provincial Building  
111 - 54 Street Edson, AB  
T7E 1T2  
Phone: 780-723-8229  
Regional Director - [Cathy Goulet](#)

Information Officer - [Chris Lockhart](#)

**Federal Representative**

Member of Parliament Fort McMurray-  
Athabasca, Alberta JEAN, Brian (Conservative)

Parliamentary Address  
House of Commons  
Ottawa, Ontario  
K1A 0A6  
Telephone: (613) 992-1154  
Fax: (613) 992-4603  
E-Mail: [Jean.B@parl.gc.ca](mailto:Jean.B@parl.gc.ca)

**Constituency Address**

102 - 9912 Franklin Avenue  
Fort McMurray, Alberta  
T9H 2K4  
Telephone: (780) 743-2201  
1-877-532-6272  
Fax: (780) 743-2287  
TTY: E-Mail:

**Provincial Representative**

Hon. Pearl Calahasen Minister of Northern Development & Aboriginal Affairs

Member of the Legislative Assembly [MLA]

Lesser Slave Lake Constituency

**Constituency Office**

P.O. Box 598  
5001 - 49 Street  
High Prairie, AB  
T0G 1E0  
Phone: (780) 523-3171  
Phone2: (780) 849-3479  
(Slave Lake)  
Toll Free: 1-866-625-0648  
Fax: (780) 523-5150  
[lesser.slavelake@assembly.ab.ca](mailto:lesser.slavelake@assembly.ab.ca)

**Legislature Office**

#403 Legislature Building  
10800 - 97 Avenue  
Edmonton, AB  
T5K 2B6  
Phone: (780) 427-2180  
Fax: (780) 427-1321

**Location**

Located within the Peace Region of Alberta, High Prairie is on Highway 2 near the west end of the Lesser Slave Lake. It is approximately 350 km northwest of Edmonton, ([Interactive Map](#)) 200 km northeast of Grande Prairie, ([Interactive Map](#)) and 650 km northwest of Calgary. ([Interactive Map](#))



Click [here](#), or on the map, for a detailed, interactive map of Northern Alberta.

## Post Secondary Education



[www.northernlakescollege.ca](http://www.northernlakescollege.ca)

- Academic Upgrading Programs
- Career Programs
- University Transfer Programs (Sunrise Project)
- Community Learning Services
- Daycare Services
- Workforce Development



[www.athabascau.ca](http://www.athabascau.ca)

Athabasca University is Canada's leading Open University. It focuses on the delivery of courses and programs by distance and online methods. Registration is year-round and anyone 18 years of age or older is eligible to apply.

- Three Year and Four Year Degrees
- Graduate and Undergraduate Programs
- Diploma Programs
- Certificate Programs
- University Transfer Programs
- Student Services Back to [Directory](#)

---

## Taxation

**Assessment [2005]** \$153,876,020 **Mill Rates [2005]**

	<b>Residential</b>	<b>Non-Residential</b>
General Municipal	8.8960	12.5816
School Requisition	4.8466	6.7191
Seniors	.1830	.1830
Regional Rec-Plex	.9460	.9460
<b>Total</b>	<b>14.8716</b>	<b>20.4297</b>

There is **No Provincial Sales Tax (PST)** in Alberta. There is a 6% Goods and Services Tax (GST) on most purchases in Canada.

---

	<u>Residential/Farmland</u>	<u>Non-Residential</u>
<b>2005</b>		
Municipal Tax Rate	9.8420	13.5276
Education - Alberta School Foundation Fund Tax Rate	4.8466	6.7191
Seniors Lodge Accommodation Tax Rate	.1830	.1830

## Transportation

High Prairie has a fully-developed transportation network. It includes access to air, rail and the highway systems. Highway #2 is a major transportation corridor linking central Alberta and destinations in the northwestern part of the province. Secondary Highways 749 and 750 connect communities within and surrounding the neighbouring Municipal District of Big Lakes.

### Air Transportation

The High Prairie Airport is located 5 kilometres south on Secondary Highway #749. The landing strip is all-weather asphalt and is 3933 feet long and 75 feet wide. It is capable of handling light aircraft including helicopters and small business jets. Services at the airport include a public terminal building and night landing on a lighted runway. Fuel is not available on site.

There are 2 charter and 2 helicopter service companies located at the High Prairie Airport. The Slave Lake Airport is located 115 kilometres (72 miles) to the east and has full fuel facilities and the Edmonton International Airport is located 365 kilometres (230 miles) to the southeast. [See: [Map](#) (scroll down)]

### Highways

**Highway 2** is a major transportation corridor linking central Alberta and destinations in the northwestern part of the province.

**Secondary Highway 749** services the High Prairie area including access to the Peavine Métis Settlement.

**Secondary Highway 750** services the area just east of High Prairie including access to the Gift Lake Métis Settlement.

Clicking on [Traffic Counts](#) will take you to a report on the Alberta Transportation website. There are figures for highways within the M.D. of Big Lakes and near High Prairie on pages 12, 13, 60, 61, 116, and 121.

### Distances to Major Centres

Slave Lake	115 km
Edmonton	370 km
Calgary	650 km
Grande Prairie	200 km
Saskatoon	882 km
Vancouver	1280 km
U.S. Border	925 km

### Passenger Bus Service

[Greyhound Canada](#) has a bus depot located at Pureflo Bottle Water/Save on Freight at 5018 – 51st Avenue. Greyhound operates daily scheduled passenger and parcel express service to Edmonton and Peace River. Allan's Coach Lines is a chartered bus service operating out of Allan's Welding shop located in the industrial section of town.

### Rail Transport



High Prairie is serviced by [Mackenzie Northern Railway \(RLGN\)](#)

### **Taxi, Transportation/Courier Services**

- Three taxi companies service High Prairie and area
- Eight freight/courier companies service High Prairie and area
- Several trucking companies service the Big Lakes region

### **Warehousing and Storage Facilities**

- Two warehousing and storage facilities service High Prairie and area Click [here](#) for more information regarding Transportation in, and around, High Prairie.

## **Utilities**

---

*Electrical Power:* [Direct Energy Services](#)

*Natural Gas:* [Town of High Prairie](#)

*Water/Wastewater:* [Town of High Prairie](#)

*Waste Management:* [Town of High Prairie](#)

---

Click [here](#) for more information regarding all the above Utilities, including rates, and more in-depth information about the area landfill, recycling, hazardous waste, and waste collection. Communication/Media

---

*Cable Television:* [K.B.S. - Cable TV](#)

*Telephone:* [Telus Communications](#) (land-line and mobile)

*Internet Services:* [Telus Communications](#)  
[Internet North](#)

---

### **Local/Regional Newspapers**

---

<b>Name</b>	<b>Phone Number</b>	<b>Fax Number</b>
South Peace News	(780) 523-4484	(780) 523-3039
Tasc Media North	(780) 523-2665	(780) 523-3088
Lakeside Leader	(780) 849-4380	(780) 849-3903

---

### **Radio Stations**

---

<b>Name</b>	<b>Phone Number</b>	<b>Fax Number</b>
CKVH Radio	(780) 523-5111	(780) 523-3360
CKYL/KIX 106 Peace River	(800) 610-3610	(780) 624-5424
CFWE FM Edmonton	(780) 447-2393	(780) 454-2820
630 CHED AM Edmonton	(780) 440-6300	(780) 469-5937

---

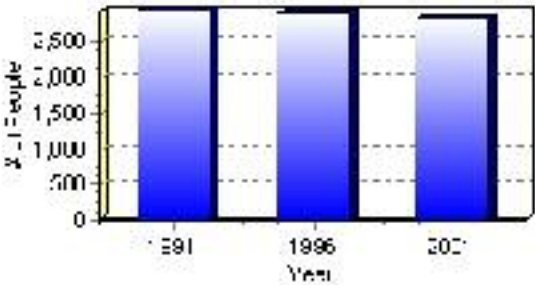
# Population

## Total Population

Population 2004*	2,820
Population 2003*	2,820
Population 2002*	2,820
Population 2001**	2,735
Population 2000*	2,907
Population 1996**	2,907
Population 1991**	2,932
Population % change 1991-1996	-0.86%
Population % change 1996-2001	-3.09%

\* Source: Official Population List, Alberta Municipal Affairs  
\*\* Source: Statistics Canada 1991, 1996, & 2001 Census

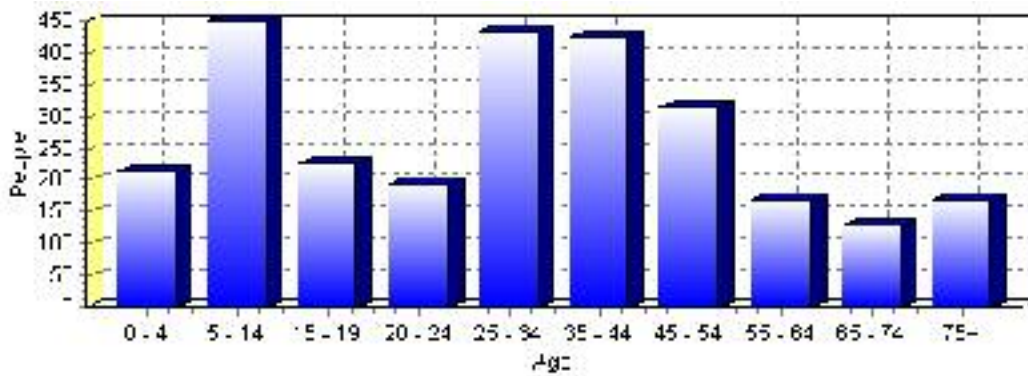
## Total Population 1991-2001



Population by Age and Gender	1996 Male	1996 Female	1996 Total	2001 Male	2001 Female	2001 Total
Age 0 - 4	140	150	290	125	90	215
Age 5 - 14	260	250	510	225	225	450
Age 15 - 19	105	105	210	110	115	225
Age 20 - 24	105	105	210	90	105	195
Age 25 - 34	270	275	545	210	225	435
Age 35 - 44	205	195	400	225	200	425
Age 45 - 54	125	130	255	155	160	315
Age 55 - 64	90	85	175	85	85	170
Age 65 - 74	65	75	140	65	65	130
Age 75 and older	55	120	175	45	125	170
Total All Persons	1,415	1,495	2,910	1,340	1,400	2,740

Source: Statistics Canada 1996 & 2001 Census (numbers may not add up due to rounding)

### High Prairie Population by Age Group (2001)

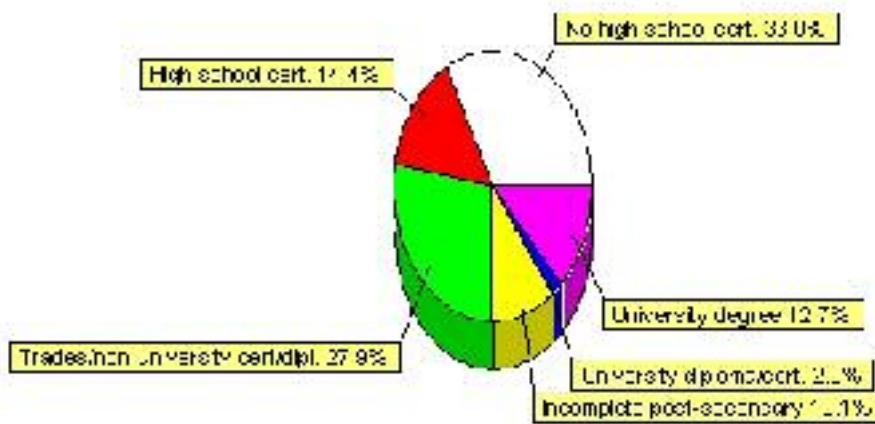


# Education Statistics

Highest level of schooling for Population 20yrs and older	2001	%
People without high school certificates	585	32.96%
People with high school certificates	255	14.37%
People with trades or non-university certificate or diploma	495	27.89%
People with post-secondary education (not completed)	180	10.14%
People with university diploma/certificate	35	1.97%
People with university degree	225	12.68%
Total Population 20 years and older	1,775	100.00%

Source: Statistics Canada 2001 Census (numbers may not add up due to rounding)

## High Prairie Highest Level of Schooling 2001



Population with Post Secondary Qualifications	1996	%	2001	%
Agriculture and biological sciences	35	4.17%	20	2.63%
Commerce, management and business administration	100	11.90%	85	11.18%
Educational, recreational and counseling services	170	20.24%	200	26.32%
Engineering and applied science tech. and trades	250	29.76%	220	28.95%
Engineering and applied sciences	25	2.98%	35	4.61%
Fine and applied arts	20	2.38%	30	3.95%
Health professionals, science and technologies	115	13.69%	70	9.21%
Humanities and related fields	40	4.76%	20	2.63%
Mathematics and physical sciences	10	1.19%	10	1.32%
Social sciences and related fields	75	8.93%	70	9.21%
Other and/or no specialization	0	0.00%	10	1.32%
Total people with post secondary qualifications	840	100.00%	760	100.00%
Females with post-secondary qualifications	370	44.05%	385	50.66%
Males with post-secondary qualifications	470	55.95%	375	49.34%

Source: Statistics Canada 1996 & 2001 Census (numbers may not add up due to rounding)

## Labour Force

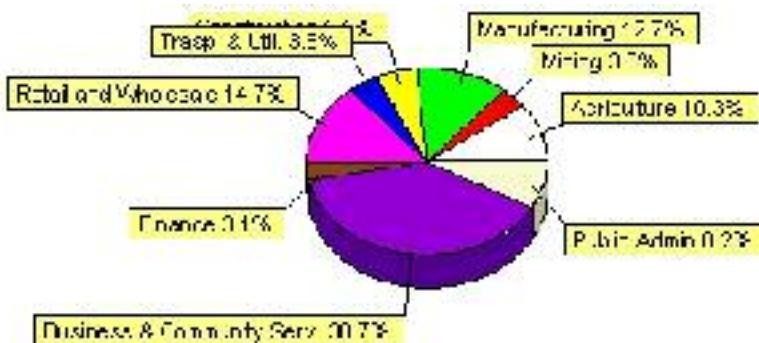
Labour force by activity	1996	2001
In the labour force, both sexes	1,435	1,465
Not in the labour force, both sexes	585	520
Total population 15 and over	2,020	1,985
Employed, both sexes	1,345	1,390
Unemployed, both sexes	90	80
Participation rate, both sexes	71.00%	74.00%
Unemployment rate, both sexes	6.00%	6.00%

Source: Statistics Canada 1996 & 2001 Census (numbers may not add up due to rounding)

Labour Force by Industry Division	1996	% of total	2001	% of total
Agriculture	80	5.61%	150	10.27%
Mining	30	2.11%	55	3.77%
Manufacturing	175	12.28%	185	12.67%
Construction	40	2.81%	80	5.48%
Transportation. & Utilities	50	3.51%	55	3.77%
Retail and Wholesale	265	18.60%	215	14.73%
Finance	55	3.86%	45	3.08%
Business & Community Services	665	46.67%	565	38.70%
Public Administration	120	8.42%	120	8.22%
Total All Industries	1,425	100.00%	1,460	100.00%

Source: Statistics Canada 1996 & 2001 Census (numbers may not add up due to rounding)

### High Prairie Labour Force By Industry - 2001



Labour Force by Major Occupational Groups	1996	%	2001	%
Management occupations	95	6.69%	170	11.64%
Business, Finances and administrative occupations	185	13.03%	165	11.30%
Natural and applied sciences and related occupations	60	4.23%	65	4.45%
Health occupations	85	5.99%	60	4.11%
Occupations in social science; education; government and religion	180	12.68%	215	14.73%
Occupations in art; culture; recreation and sport	10	0.70%	10	0.68%



Sales and service occupations	425	29.93%	300	20.55%
Trades; transport; equipment operators and related occupations	205	14.44%	260	17.81%
Occupations unique to primary industry	55	3.87%	155	10.62%
Occupations unique to processing; manufacturing and utilities	125	8.80%	70	4.79%
Occupations not elsewhere classified	10	0.70%	0	0.00%
Total - All Occupations (major groups)	1,420	100.00%	1,460	100.00%
Females - All Occupations	635	44.72%	685	46.92%
Males - All Occupations	785	55.28%	775	53.08%

Source: Statistics Canada 1996 & 2001 Census (numbers may not add up due to rounding)

---

## Income

<b>Family Income (Number of Families)</b>	<b>1996</b>	<b>%</b>	<b>2001</b>	<b>%</b>
less than \$19,999	50	8.40%	80	14.04%
\$20,000 - \$39,999	175	29.41%	180	31.58%
\$40,000 - \$59,999	145	24.37%	115	20.18%
\$60,000 and over	225	37.82%	275	48.25%
Total number of families	595	100.00%	650	114.04%
Average family income	\$52,892		\$63,050	
Median family income	\$52,608		\$57,617	

Source: Statistics Canada 1996 & 2001 Census (numbers may not add up due to rounding)

<b>Household Income (Number of Households)</b>	<b>1996</b>	<b>%</b>	<b>2001</b>	<b>%</b>
less than \$19,999	220	22.00%	190	18.54%
\$20,000 - \$39,999	275	27.50%	260	25.37%
\$40,000 - \$59,999	230	23.00%	145	14.15%
\$60,000 and over	90	9.00%	430	41.95%
Total number of households	1,000	100.00%	1,025	100.00%
Average household income	\$45,112		\$56,603	
Median household income	\$40,186		\$46,794	

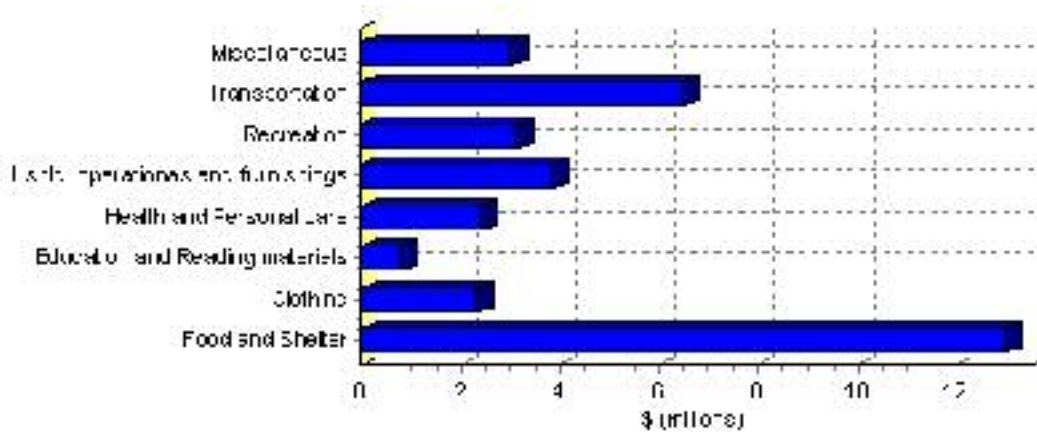
Source: Statistics Canada 1996 & 2001 Census (numbers may not add up due to rounding)

# Family Expenditure

Expenditure Category	1992	% of total	1996	% of total
Food and Shelter	\$10,496,325	37.56%	\$13,003,567	37.10%
Clothing	\$1,895,900	6.78%	\$2,333,138	6.66%
Education and Reading materials	\$582,735	2.09%	\$802,592	2.29%
Health and Personal care	\$1,751,030	6.27%	\$2,413,569	6.89%
Hshld. operations and furnishings	\$3,074,850	11.00%	\$3,857,774	11.01%
Recreation	\$2,248,190	8.04%	\$3,146,333	8.98%
Transportation	\$5,692,725	20.37%	\$6,486,449	18.50%
Miscellaneous	\$2,192,800	7.85%	\$3,009,051	8.58%
Total Current Consumption	\$27,946,950	100.00%	\$35,052,473	100.00%
Total # of Households	985		999	
Average Consumption per Household	\$28,373		\$35,088	

Source: Statistics Canada Family Expenditure Survey 1992 & 1996 (numbers may not add up due to rounding).

## High Prairie Family Expenditures (1996)

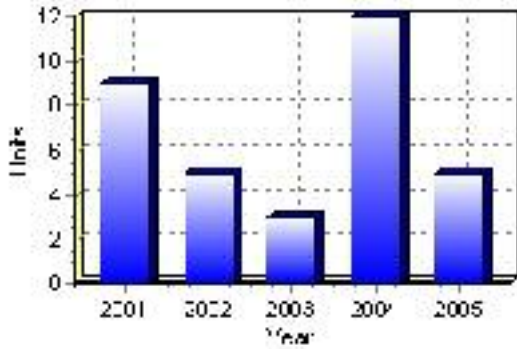


# Building Permits

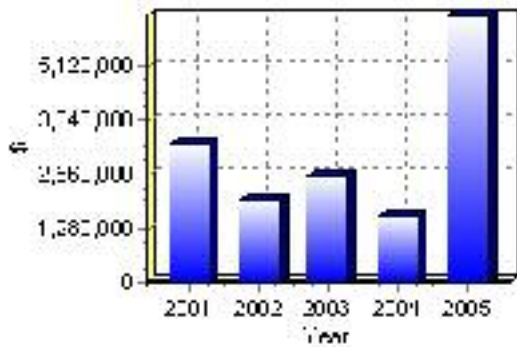
Total Building Permit Values	2001	2002	2003	2004	2005
Building Permits Value, Commercial	\$1,342,000	\$1,164,000	\$1,293,000	\$185,000	\$5,211,000
Building Permits Value, Industrial	\$1,277,000	\$60,000	\$660,000	\$0	\$150,000
Building Permits Value, Institutional	\$210,000	\$100,000	\$52,000	\$0	\$0
Building Permits Value, Residential	\$467,000	\$645,000	\$528,000	\$1,406,000	\$971,000
Building Permits Value, Total	\$3,296,000	\$1,969,000	\$2,533,000	\$1,591,000	\$6,332,000
Total Housing Starts	9	5	3	12	5

Source: Statistics Canada 2000-2004 Building Permits (numbers may not add up due to rounding)

## Total Housing Starts



## Value of Building Permits



## Dwellings

<b>Occupied Private Dwellings by Type</b>	<b>1996</b>	<b>% of total</b>	<b>2001</b>	<b>% of total</b>
Apartments	120	12.00%	140	13.66%
Detached Duplexes	15	1.50%	35	3.41%
Movable Dwellings	85	8.50%	115	11.22%
Other single attached house	15	1.50%	10	0.98%
Row and semi-detached house	105	10.50%	65	6.34%
Single-detached house	660	66.00%	665	64.88%
Total number of occupied private dwellings	1,000	100.00%	1,025	100.00%
Private dwellings, owned	590	59.00%	665	64.88%
Private Dwellings, rented	405	40.50%	365	35.61%

Source: Statistics Canada 1996 & 2001 Census (numbers may not add up due to rounding)

<b>Private Dwellings by Period of Construction</b>	<b># of Dwellings</b>	<b>% of total</b>
Period of construction, before 1946	15	1.45%
Period of construction, 1946 - 1960	185	17.87%
Period of construction, 1961 - 1970	195	18.84%
Period of construction, 1971 - 1980	305	29.47%
Period of construction, 1981 - 1990	200	19.32%
Period of construction, 1991 - 2001	135	13.04%
Total number of private dwellings constructed	1,035	100.00%

Source: Statistics Canada 2001 Census (numbers may not add up due to rounding)



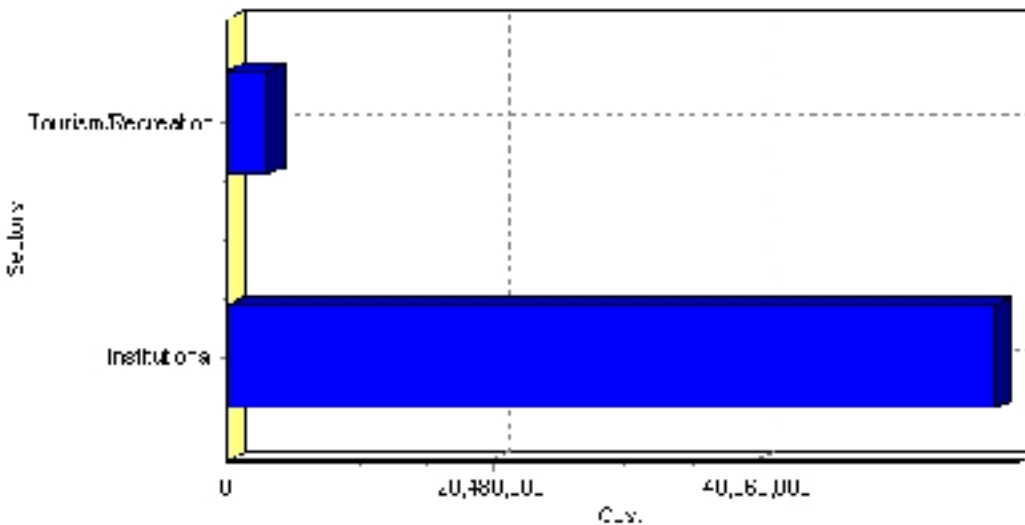
# Projects

## Summary of Projects in High Prairie as of September 2006

Project Sector	Number of Projects	Project Cost
Institutional	2	\$59,200,000
Tourism/Recreation	1	\$3,100,000
Total	3	\$62,300,000

This inventory lists projects in Alberta that have recently been completed, are under construction, or are proposed to start construction. Not all projects are listed due to reasons of confidentiality and/or due to information not being available at the time of printing. Project data is obtained from public information sources, where possible, this data has been verified with the project proponent/developer, users of the Inventory may wish to confirm project data with the proponent/developer. The inventory does not breakdown project expenditures by any given year. The cost of a project is the value of expenditures expected over all phases of project construction, which may span over two or more years. Cost of projects listed in the Inventory are estimated values only. Source: Alberta Economic Development, 2004.

## Value of Projects by Sector (as of September 2006)



Project Status	Number of Projects	Project Cost
Announced	1	\$3,100,000
Proposed	1	\$58,000,000
Under Construction	1	\$1,200,000
Total	3	\$62,300,000

This inventory lists projects in Alberta that have recently been completed, are under construction, or are proposed to start construction. Not all projects are listed due to reasons of confidentiality and/or due to information not being available at the time of printing. Project data is obtained from public information sources, where possible, this data has been verified with the project proponent/developer, users of the Inventory may wish to confirm project data with the proponent/developer. The inventory does not breakdown project expenditures by any given year. The cost of a project is the value of expenditures expected over all phases of project construction, which may span over two or more years. Cost of projects listed in the Inventory are estimated values only. Source: Alberta Economic Development, 2004.

## Largest Projects in High Prairie as of September 2006

Company Name	Project Description	Project Location	Project Cost	Construction Schedule	Status
Peace Country Health Region	New Hospital	High Prairie	\$58,000,000	-	Proposed
Town of High Prairie	Multi-Purpose Facility (Second Ice Sheet and Gymnasium)	High Prairie	\$3,100,000	2006-2006	Announced
Town of High Prairie	2ND ICE SURFACE	High Prairie	\$1,200,000	2006-2007	Under Construction

Disclaimer: Information in this profile has been provided from a variety of external sources. Although every effort has been made to ensure the accuracy, currency and reliability of the content and data, AlbertaFirst.com Ltd. accepts no responsibility in this regard.

© AlbertaFirst.com Ltd., 2006.