

Delia

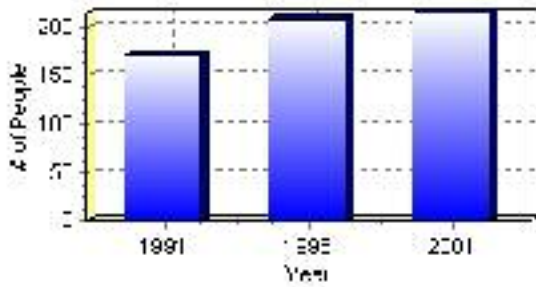
Population

Total Population

Population 2004*	215
Population 2003*	215
Population 2002*	215
Population 2001**	215
Population 2000*	208
Population 1996**	208
Population 1991**	171
Population % change 1991-1996	17.79%
Population % change 1996-2001	3.26%

* Source: Official Population List, Alberta Municipal Affairs
** Source: Statistics Canada 1991, 1996, & 2001 Census

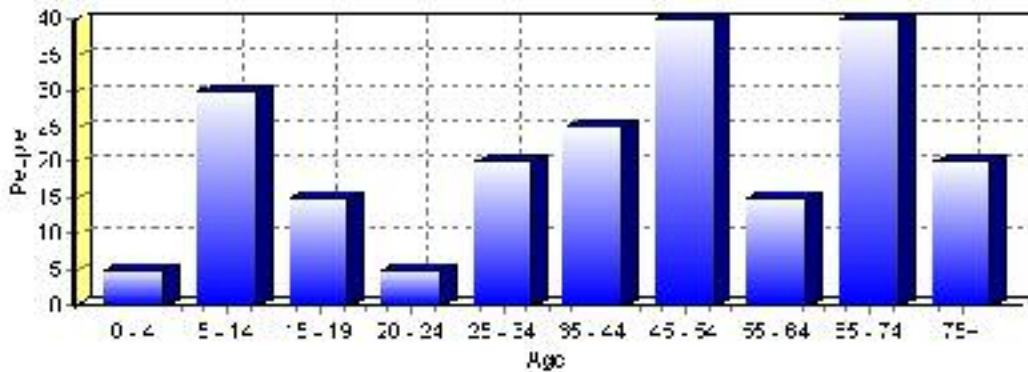
Total Population 1991-2001



Population by Age and Gender	1996 Male	1996 Female	1996 Total	2001 Male	2001 Female	2001 Total
Age 0 - 4	10	0	10	0	5	5
Age 5 - 14	15	20	35	20	10	30
Age 15 - 19	0	10	10	5	10	15
Age 20 - 24	5	5	10	0	5	5
Age 25 - 34	10	15	25	10	10	20
Age 35 - 44	10	10	20	10	15	25
Age 45 - 54	10	15	25	25	15	40
Age 55 - 64	10	20	30	5	10	15
Age 65 - 74	15	20	35	20	20	40
Age 75 and older	15	10	25	10	10	20
Total All Persons	100	105	205	110	105	215

Source: Statistics Canada 1996 & 2001 Census (numbers may not add up due to rounding)

Delia Population by Age Group (2001)

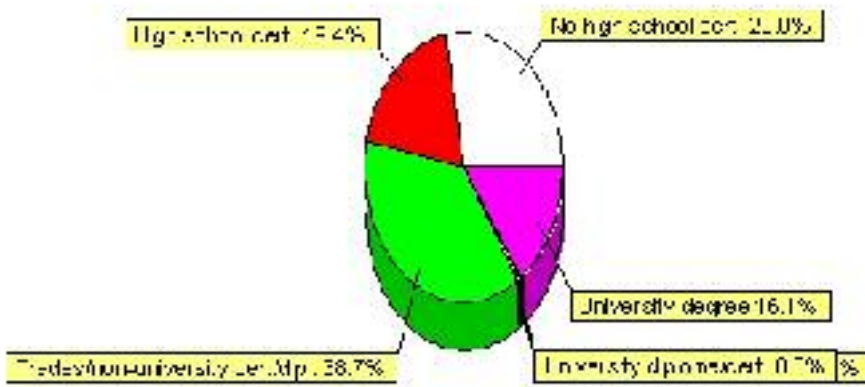


Education Statistics

Highest level of schooling for Population 20yrs and older	2001	%
People without high school certificates	45	29.03%
People with high school certificates	30	19.35%
People with trades or non-university certificate or diploma	60	38.71%
People with post-secondary education (not completed)	0	0.00%
People with university diploma/certificate	0	0.00%
People with university degree	25	16.13%
Total Population 20 years and older	155	100.00%

Source: Statistics Canada 2001 Census (numbers may not add up due to rounding)

Delia Highest Level of Schooling 2001



Population with Post Secondary Qualifications	1996	%	2001	%
Agriculture and biological sciences	0	0.00%	0	0.00%
Commerce, management and business administration	0	0.00%	15	17.65%
Educational, recreational and counseling services	0	0.00%	20	23.53%
Engineering and applied science tech. and trades	25	55.56%	40	47.06%
Engineering and applied sciences	0	0.00%	0	0.00%
Fine and applied arts	0	0.00%	10	11.76%
Health professionals, science and technologies	20	44.44%	10	11.76%
Humanities and related fields	0	0.00%	10	11.76%
Mathematics and physical sciences	0	0.00%	0	0.00%
Social sciences and related fields	0	0.00%	0	0.00%
Other and/or no specialization	0	0.00%	0	0.00%
Total people with post secondary qualifications	45	100.00%	85	100.00%
Females with post-secondary qualifications	20	44.44%	35	41.18%
Males with post-secondary qualifications	25	55.56%	50	58.82%

Source: Statistics Canada 1996 & 2001 Census (numbers may not add up due to rounding)

Labour Force

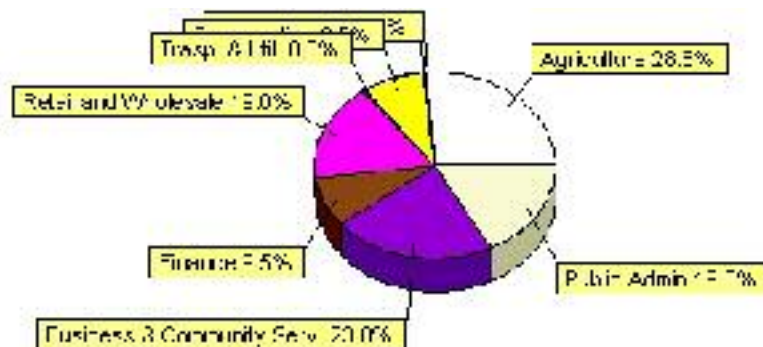
Labour force by activity	1996	2001
In the labour force, both sexes	100	100
Not in the labour force, both sexes	75	65
Total population 15 and over	175	170
Employed, both sexes	85	100
Unemployed, both sexes	15	0
Participation rate, both sexes	57.00%	59.00%
Unemployment rate, both sexes	15.00%	0.00%

Source: Statistics Canada 1996 & 2001 Census (numbers may not add up due to rounding)

Labour Force by Industry Division	1996	% of total	2001	% of total
Agriculture	10	10.00%	30	28.57%
Mining	0	0.00%	0	0.00%
Manufacturing	0	0.00%	0	0.00%
Construction	10	10.00%	10	9.52%
Transportation. & Utilities	20	20.00%	0	0.00%
Retail and Wholesale	10	10.00%	20	19.05%
Finance	0	0.00%	10	9.52%
Business & Community Services	30	30.00%	25	23.81%
Public Administration	10	10.00%	20	19.05%
Total All Industries	100	100.00%	105	100.00%

Source: Statistics Canada 1996 & 2001 Census (numbers may not add up due to rounding)

Delia Labour Force By Industry - 2001



Labour Force by Major Occupational Groups	1996	%	2001	%
Management occupations	10	10.00%	0	0.00%
Business, Finances and administrative occupations	0	0.00%	25	25.00%
Natural and applied sciences and related occupations	20	20.00%	0	0.00%
Health occupations	10	10.00%	0	0.00%
Occupations in social science; education; government and religion	10	10.00%	10	10.00%
Occupations in art; culture; recreation and sport	0	0.00%	0	0.00%

Sales and service occupations	20	20.00%	10	10.00%
Trades; transport; equipment operators and related occupations	15	15.00%	20	20.00%
Occupations unique to primary industry	10	10.00%	35	35.00%
Occupations unique to processing; manufacturing and utilities	0	0.00%	0	0.00%
Occupations not elsewhere classified	0	0.00%	0	0.00%
Total - All Occupations (major groups)	100	100.00%	100	100.00%
Females - All Occupations	40	40.00%	40	40.00%
Males - All Occupations	60	60.00%	60	60.00%

Source: Statistics Canada 1996 & 2001 Census (numbers may not add up due to rounding)

Dwellings

Occupied Private Dwellings by Type	1996	% of total	2001	% of total
Apartments	0	0.00%	0	0.00%
Detached Duplexes	0	0.00%	0	0.00%
Movable Dwellings	0	0.00%	15	15.79%
Other single attached house	0	0.00%	0	0.00%
Row and semi-detached house	10	10.00%	10	10.53%
Single-detached house	90	90.00%	70	73.68%
Total number of occupied private dwellings	100	100.00%	95	100.00%
Private dwellings, owned	60	60.00%	75	78.95%
Private Dwellings, rented	40	40.00%	20	21.05%

Source: Statistics Canada 1996 & 2001 Census (numbers may not add up due to rounding)

Private Dwellings by Period of Construction	# of Dwellings	% of total
Period of construction, before 1946	30	31.58%
Period of construction, 1946 - 1960	20	21.05%
Period of construction, 1961 - 1970	25	26.32%
Period of construction, 1971 - 1980	20	21.05%
Period of construction, 1981 - 1990	0	0.00%
Period of construction, 1991 - 2001	0	0.00%
Total number of private dwellings constructed	95	100.00%

Source: Statistics Canada 2001 Census (numbers may not add up due to rounding)

Disclaimer: Information in this profile has been provided from a variety of external sources. Although every effort has been made to ensure the accuracy, currency and reliability of the content and data, AlbertaFirst.com Ltd. accepts no responsibility in this regard.

© AlbertaFirst.com Ltd., 2006.