

St. Albert

www.stalbert.ca

Welcome

WELCOME TO THE CITY OF ST. ALBERT!

St. Albert has been called “Alberta’s Finest City” and for good reason. Our expanding residential subdivisions offer a variety of homes at affordable prices. The City’s streets, old or new, are lined with trees and grass boulevards. Every neighbourhood offers lots that back onto natural ravines or developed parkland. Parks, both small and large, dominate St. Albert’s residential neighbourhoods. Each of our neighbourhoods is connected to or is easily accessible to our newly expanded trail system. This feature further enhances St. Albert’s reputation of being an attractive, family-oriented community where homes retain their value over time.

St. Albert’s business sector has been experiencing significant growth. This upward trend in the rate of new business formation is reflective of the strong overall growth in the Alberta economy and a desire by City Council to welcome and encourage the expansion of existing businesses and the location of new business within the City.

St. Albert’s business parks offer light industrial opportunities second to none in metro Edmonton. Convenient access to the Yellowhead Highway and Highway #2 provide excellent locational advantages and opportunities. Lower industrial property taxes and the low cost of water and sewerage in the Capital region give St. Albert businesses a competitive edge.

St. Albert is a customer friendly city. It prides itself on the quality of the residential lifestyle it offers its citizens and the economic opportunities it provides its businesses. Take the time to visit the fifth largest city located in Alberta’s heartland and see for yourself. You won’t regret it.

Sincerely yours,

Paul Chalifoux
Mayor



This colourful display greets visitors coming into St. Albert northbound on St. Albert Trail from Edmonton.

Area Overview

The City of St. Albert, with a population of approximately 55,000 people, is Alberta's 5th largest city.

The Sturgeon River Valley shapes the urban landscape of St. Albert. This slow-moving and shallow river has, over time, created a gentle rolling topography which provides scenic views and a natural diversity, in contrast to a flat prairie setting. The river lot system, styled after rural Quebec townships, defines the majority of parcel sizes and shapes along both sides of the Sturgeon River. Streams, ravines and drainage channels leading to the river continue to be preserved, as much as possible, in their natural state.

St. Albert is well known for its quality of life. Attractive and well-maintained residential neighbourhoods are among the best that metro Edmonton has to offer. St. Albert's engineering and landscaping standards are among the highest of any metro Edmonton

municipality, resulting in well-treed and maintained residential streets, grassed boulevards and attractive perimeter fencing. The availability of quality recreational and cultural opportunities enrich this secure family-oriented community.



St. Albert's engineering and landscaping standards are among the highest of any metro Edmonton municipality, resulting in well-treed and maintained residential streets, grassed boulevards and attractive perimeter fencing.

Climate

St. Albert enjoys four distinct climatic seasons. Winter is characterized by clear skies, low humidity and mild winds. On a typical midwinter/January day, the average temperature is -11 degrees Celsius (12 degrees Fahrenheit), and there is an average of 27 centimetres (11 inches) of snow covering the ground.

Summers are usually warm, with daytime temperatures averaging 22 degrees Celsius (72 degrees Fahrenheit) and evening temperatures cooling to a pleasant 11 degrees Celsius (52 degrees Fahrenheit).

Spring and autumn are often the most enjoyable seasons, with mild temperatures and ample sunshine.

[Current weather in St. Albert](#)

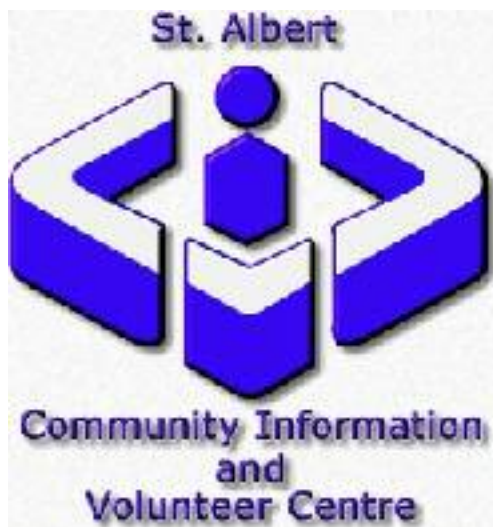
Community Services

Municipal:

City of St. Albert
5 St. Anne Street
St. Albert, Alberta
T8N 3Z9
Tel: (780)459-1500
Fax: (780)460-2394
e-mail: info@st-albert.net
website: www.stalbert.ca

- [Economic Development & Tourism](#)
- [Public Works Fire and Emergency](#)
- [Library Services](#)
- [Planning and Development](#)

St. Albert provides support to families and individuals through the following Family & Community Support Services agencies: the Association for People with Disabilities, Community Information and Volunteer Resource Centre, Family and School Liaison Program, Out of School Care - St. Albert Day Care Society, Parents' Place, Pregnancy Help, Stop Abuse in Families [SAIF], St. Albert Help Society, and the St. Albert Senior Citizens' Club.



A number of support groups are also available such as the One Parent Family Association, St. Albert Food Bank, Learning Disabilities Association, St. Albert Bereavement Fellowship, and the Inter-Faith Caring Council.

City staff also offer summer programs for special needs children, in addition to Personal Development courses and workshops, and ongoing programs for teens through Youth Outreach Services.

Provincial:

The Provincial building is located centrally in downtown St. Albert and houses a variety of Government of Alberta offices.

Federal:

- Canada Post Office
- Royal Canadian Mounted
- Police Transport Canada

Community Lifestyle

Recreation:

St. Albert is known for its attractive and extensive park system. Red Willow Urban Park, which extends along the Sturgeon River corridor, serves as the central focus of St. Albert's parks system with connections available to most neighbourhood parks. To date, over 40 km of trails have been built, linking neighbourhoods to the Sturgeon River parkway.

Both school districts, through a Joint Use Agreement with the City, permit access to their schools for recreational groups' use.

The community has two twin arenas. The Akinsdale and Kinex Arena is open from October to April, while the Campbell Twin Arenas is open year round. The arenas accommodate programs offered by minor hockey, adult recreation, figure and power skating clubs, Ringette and Lacrosse Associations.

The City also provides 20 outdoor ice surfaces, over half of them with supervised skating. In addition, there are many soccer and rugby pitches, 60 fields in total, as well as two tournament facilities in Red Willow Park. Ball diamonds are in abundance with two larger facilities, Meadowview Ball Park and Legion Memorial Ball Park, located within Red Willow Park. Another 30 ball diamonds exist throughout the City, usually associated with a school. There are 33 outdoor tennis courts located in 9 sites throughout St. Albert.

The Fountain Park Recreation Centre houses an expanded indoor pool which supports a variety of children's and adult swim programmes. The centre also features racquetball courts. The City also has an outdoor pool, Grosvenor Park Pool, which accommodates an average of 20,000 people during the summer months. In 1994, a children's water park was completed which featured wading pools, change house, and several non-water activities on the banks of the Sturgeon River.

For more information on Recreation Services with the City of St. Albert, click on [Recreation Services](#).

Community Organizations:

For those who wish to get involved in the community, St. Albert is home to a wide variety of over 70 clubs and organizations, including the Air Cadets, Association for People with Disabilities, Beavers & Cubs, Block Parent Society, Bridge Club, Brownies & Girl Guides, Canadian Progress Club, Catholic Women's' League, Chamber of Commerce, Further Education Council, Kinsmen Club, Lions Club, Newcomers Club, One Parent Family Association, Royal Canadian Legion and the Welcome Wagon.

There are over 40 recreational organizations in St. Albert, a partial list of which includes the B.M.X. Club, Baton Twirlers, Badminton Club, Fencing Club, Figure Skating Club, Flag Football, Gymnastics Club, Karate Club, Minor Baseball Association, Minor Hockey Association, Ringette Association, Soccer Association, Special Olympics, Square Dance Club, Swim Club, and the Tennis Club.

Some cultural organizations operating in St. Albert includes the Community Band, Companion Players, Floral Arts Society, Friends of Children's Theatre, Arts & Heritage Foundation, Painters Guild, Potters Guild, and the Weavers Guild.

Religious Services:

Churches play an important role in the development of St. Albert. There are numerous faiths represented in St. Albert, with 25 congregations meeting throughout the community.

Special Annual Events/Attractions:

The City's cultural facilities are among the finest in Canada for a municipality the size of St. Albert.



Above: The Arden Theatre, part of St. Albert Place, at night.

St. Albert Place is situated on the Sturgeon River in the heart of St. Albert. The six elements of St. Albert Place stress its "people place" theme. The building encompasses City Hall with its civic offices and Council Chamber, as well as a library, Arden Theatre, and Musee Heritage Museum. The Arden Theatre is a 530-seat facility for the performing arts, and provides the opportunity for a variety of events and performances. A strong emphasis has been placed on Children's Theatre and a number of the developed programs have received national recognition and praise. The Musee Heritage Museum is a permanent display depicting the history of St. Albert in addition to hosting a series of travelling exhibits. St. Albert Place also houses a visual arts studio for pottery, painting, weaving and multi-crafts, and also includes a beautiful 35,000 sq. ft. library which is heavily utilized by young and old alike.

St. Albert Place is also home to the W.A.R.E.S. Craft Shop.

[Arden Theatre](#)

[Musee Heritage Museum](#)

[St. Albert Public Library](#)

Accommodation:

- [Horizon Motel](#)
- [Sleep-Inn Motel](#)
- [St. Albert Inn](#)
- [City View Bed & Breakfast](#)

Restaurants:

St. Albert has a wide range of restaurants and dining experiences available to residents and visitors.



St. Thomas Street boutiques and shops are a real draw to St. Albert residents and visitors alike.



The "Butterfly Sails" fountain, located in the A.C.T. Celebration Garden is one of the many examples of St. Albert's commitment to culture.



Lacombe Lake Park, located on the 40 kilometre long Red Willow Park Trail System, is a popular recreational area for all seasons.

Economic Base



St. Albert in recent years has developed a very diversified economic base. Besides serving as a service centre to residents of St. Albert and the surrounding area, it has developed a strong light industrial and warehousing base with an expanded focus on technology firms. Some of the other major areas of economic activity include construction and plastics.

[Business directory for St. Albert](#)



Above: Bitnets PC Express



A view of Holes Greenhouses, a popular destination not only for gardeners, but also for tourists. This successful St. Albert business is owned and operated by the Hole family. The late Lois Hole was the former Lieutenant-Governor of Alberta.

Economic Facts

Major Businesses/Products/Services:

- Standard General Construction - Construction
- Gazette Press Ltd. - Publishing
- Fortis Utilities Corporation - Utilities
- Pro-Western Plastics Ltd. - Plastics
- Alberco Construction Ltd. - Construction
- Jenson & Sons Roofing Ltd. - Construction
- TNT Logistics - Warehouse and Distribution
- Goodyear Canada - Warehouse and Distribution
- Alberta Gaming and Liquor Commission



Above: Pro-Western Plastics, one of St. Albert's major businesses is located in Riel Business Park.

Financial Institutions:

- Bank of Montreal
- Bank of Nova Scotia
- Canadian Imperial Bank of Commerce (CIBC)
- Canadian Western Bank
- Capital City Savings & Credit Union

- Alberta Treasury Branch
- Royal Bank Financial Group
- TD Canada Trust

Education

St. Albert is part of the [Greater St. Albert Catholic Regional Division #29](#), headquartered in St. Albert [Tel: (780)459-7711], and the [St. Albert Protestant Separate Schools](#), also headquartered in St. Albert [Tel: (780)460-3712].



Above: Vincent J. Maloney Jr. High School

Both the Catholic and Protestant School Districts offer French Immersion programs from kindergarten to grade 12.

Both school districts offer a number of innovative programs in response to the diverse educational needs of their students. A variety of special education programs are available such as learning assistance programs, enrichment and gifted programs, and educatable mentally-handicapped programs.

The majority of residential development in St. Albert is relatively new. The accompanying school facilities are also new and very well equipped. Bellerose Composite High School is an example of a facility that offers a comprehensive academic program in addition to vocational education and integrated occupational programs.

St. Albert students' academic achievements have consistently remained above provincial averages. Grade 12 provincial diploma exam results, for example, have exceeded provincial averages in English, mathematics, chemistry, biology and physics. Scholarships and achievements in competitions attest to the academic excellence of St. Albert students.

St. Albert's junior high and high schools have also achieved excellence in sports, winning a number of provincial championships.

St. Albert now has a Francophone school: Ecole La Mission, part of the Conseil Scolaire Centre-Nord [Tel: (780)459-9568].

Daycare/Nursery:

- Bumble Bee Day Care
- "It's A Child's World" Day Homes
- Ladybug Child Development Centre
- Providence Montessori Children's Centre
- St. Albert Day Care Centre
- St. Albert Day Care Society
- St. Albert Nursery School
- SIGIS Child Care Centre
- Tender Touch Daycare Centre

Public:

In St. Albert, the Catholic school system is the public school system. Catholic schools in St. Albert include Albert Lacombe Elementary School [1-6], Bertha Kennedy School [1-6], Ecole Father Jan Community School [K-6], Ecole Secondaire Ste. Marguerite D'Youville School [7-12], Ecole Marie Poburan School [K-6], J.J. Nearing Elementary School [K-6], Neil M. Ross [1-6], Richard S. Fowler Junior High School [7-9], St. Albert Catholic High School [10-12], Vital Grandin School [K-6], St. Gabriel Cyber School, and Vincent J. Maloney Junior High School [7-9].

Separate:

Protestant schools in St. Albert include Bellerose Composite High [10-12], Elmer S. Gish School [K-9], Keenooshayo Elementary School [K-6], Leo Nickerson Elementary [K-6], Lorne Akins Junior High School [7-9], Muriel Martin Elementary School [K-5], Paul

Kane High School [10-12], Robert Rundle Elementary School [K-6], Ronald Harvey Elementary School [K-6], Sir Alexander Mackenzie School [K-6], Sir George Simpson Junior High School [7-9], Wild Rose Elementary School [K-6], and William D. Cuts School [6-9].

Ecole La Mission (Francophone School)

Private:

N/A

Emergency Services

All Emergency Services can be accessed by dialing 9-1-1.

Fire Protection:

The 69-member St. Albert Fire Department is comprised of professional fire fighters and emergency medical services [paramedics] operating from two strategically located stations in St. Albert [Tel: (780)459-7777]. Qualified personnel with modern equipment can be on the scene of an emergency within the City in minutes.

The Department offers a variety of programs such as fire inspections, fire prevention, and other emergency medical services.

Police Services:

St. Albert has a 44-member RCMP Detachment, 6 Bylaw Officers and 21 support staff which operate Traffic and Crime Prevention/Community Relations Sections and bylaw enforcement. This detachment undertakes a wide range of community endeavours such as Bicycle Patrol, School Liaison Programs and Family Violence Protection to name a few [Tel: (780)458-7700].

Ambulance Services:

The St. Albert Fire Department handles the local paramedical/ambulance service through two fire halls. This 24-hour service gives local residents emergency medical services with quick response times from the two locations. The advanced life support ambulances are in direct contact with the Sturgeon Community Hospital and Health Centre. [Tel: (780)459-7777].

Health Care

The Sturgeon Community Hospital and Health Centre provides inpatient and outpatient services to meet the acute health care needs of St. Albert and is supported by specialized health care professionals. The patient care activity at the hospital rapidly outgrew the previous building's capability to handle the volume. The new hospital, opened in 1992, now operates 120 beds, including a 10-bed intensive care unit.

This new facility provides better comprehensive ambulatory care. The hospital still provides primary care but of a much more extensive nature such as expanded surgical capabilities, outpatient clinics, expanded diagnostic capabilities, intensive care unit and obstetrical unit. The obstetrical unit is a fairly new concept where labour, delivery, recovery and post-partum events are all carried out in the same room in a home-like atmosphere. The Sturgeon General emergency room is the 13th busiest out of 125 acute-care hospitals in the province.

The Capital Health Authority - St. Albert Health Unit is staffed by a good number of health care professionals which provide a variety of services, including: prenatal classes and postnatal follow-ups; immunization and school health services; health inspection services and health promotion; preventive dental, speech and audiology services; hereditary disease identification, counselling, health education and consultation; and nutrition promotion and education.

Other medical services include over 50 physicians, 4 denture clinics, 7 medical clinics, 5 physical therapy clinics, 14 chiropractors, 23 dentists, 7 optometrists, 3 orthodontists, and 8 psychologists. In addition, Sturgeon Community Hospital accommodates a large number of metro Edmonton physicians and surgeons with consulting staff privileges within the hospital.

St. Albert's seniors accommodations continue to change. Many new multiple-family projects have been built or are under construction which are oriented to the adult housing market which includes seniors. There is a more limited variety of strictly seniors housing accommodation available in North Ridge Lodge and Chateau Mission Court with both apartment and lodge housing.

Youville Nursing Home is committed to high quality care for its residents in a homelike atmosphere. With a capacity of 160 residents, the staff of almost 200 provide excellent care and comfort to all.



Sturgeon Community Hospital and Health Centre

Key Contacts for Business Development

Municipal:

City of St. Albert
5 St. Anne Street
St. Albert, Alberta
T8N 3Z9
Tel: 780-459-1500
Fax: 780-460-2394
e-mail: info@st-albert.net
website: www.stalbert.ca

Paul Chalifoux
Mayor
mayor@st-albert.net

Bill Holtby
City Manager
bholtby@st-albert.net

Larry Horncastle
Director, Economic Development & Tourism
71 St. Albert Road
St. Albert, Alberta
T8N 6L5
Tel: 780-459-1613
Fax: 780-460-1161
e-mail: lhorncastle@st-albert.net
website: www.stalbert.ca



Provincial :

David Pattison
Director, Edmonton Region
Regional Development Branch

Alberta Economic Development
5th Floor, Commerce Place
10155 - 102 Street
Edmonton, AB T5J 4L6
Tel: 780-427-6648
Fax: 780-422-5804
e-mail: david.pattison@gov.ab.ca

Jan Couper, Client Services Representative
Tel: 780-427-6291
jan.couper@gov.ab.ca

Jack Flaherty
Member of the Legislative Assembly [MLA]
St. Albert Constituency
#201 Legislature Annex
9718 107 Street
Edmonton AB
T5K 1E4
Tel: 780-427-2292
Fax: 780-427-3697

Constituency Office:
14 Perron Street
St. Albert AB
T8N 1E4
Tel: 780-459-9113
Fax: 780-460-9815

Honourable Doug Horner
Member of the Legislative Assembly [MLA]
Spruce Grove-Sturgeon-St. Albert Constituency
#229 Legislature Building
10800-97 Avenue
Edmonton AB
T5K - 2B6
Tel: 780-427-2137
Fax: 780-422-6035

Constituency Office:
206 B McLeod Avenue
Spruce Grove AB
T7X 2K5
Tel: 780-962-6606
Fax: 780-962-1568

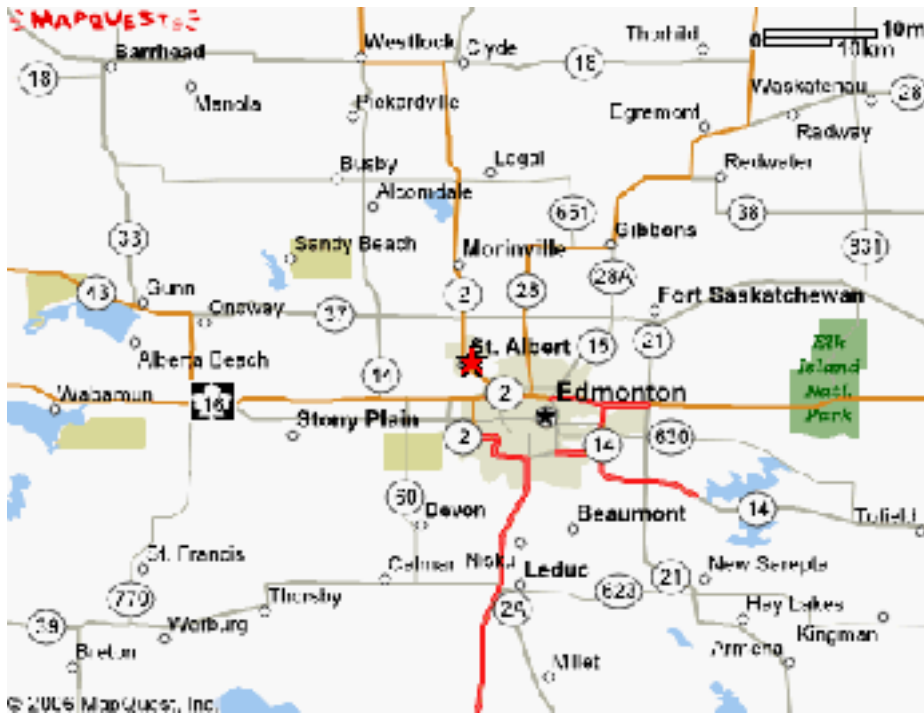
Federal:

John Williams
Member of Parliament [MP]
Edmonton—St. Albert Constituency
House of Commons
Ottawa, Ontario
K1A 0A6
Tel: 613-996-4722
Fax: 613-995-8880

Constituency Office:
205 - 7 Ste. Anne Street
Professional Building
St. Albert, Alberta
T8N 2X4
Tel: (780)459-0809
Fax: (780)460-1246

Location

St. Albert is located adjacent to north Edmonton. With 156th, 170th and 184th Streets, St. Albert is just a ten-minute drive to west Edmonton. Edmonton's downtown core is 20 minutes from St. Albert via the St. Albert Trail and Yellowhead Highway. Access to NAIT and the University of Alberta is also convenient from the Yellowhead Highway and Groat Road.



Attractive and well-maintained residential neighbourhoods, such as the Heritage Lakes neighbourhood are among the best that Alberta's Capital Region has to offer.

Post Secondary Education

St. Albert is conveniently located in relation to the University of Alberta, the Northern Alberta Institute of Technology [NAIT] and Grant MacEwan College. St. Albert Transit offers convenient bus services to the University of Alberta, Grant MacEwan College and NAIT during the school year. Further information pertaining to the facilities and programs offered by these institutions of higher

education may be obtained by contacting the respective Registrar's offices.



Taxation

Mill Rates [2004]:

- Residential - 9.354
- Non-Residential - 14.095

	<u>Residential/Farmland</u>	<u>Non-Residential</u>
2005		
Municipal Tax Rate	10.3070	15.0020
Education - Alberta School Foundation Fund Tax Rate	4.2270	6.3380
Education Opted Out Tax Rate	4.2270	6.3380

Transportation

Air Service:

St. Albert has a local airport located 3 km northwest of the city. The nearest commercial and air freight services are at the Edmonton International Airport, located 50 km south of St. Albert. Edmonton International Airport is served by Air Canada, West Jet and other airlines. For details check with [Edmonton Airports](#).

Rail Service:

Rail service is provided by the CNR through the Edmonton station. Numerous connections are available via Edmonton, including Wainwright sub [to Saskatoon], Camrose sub [to Calgary], Edson sub [to Prince George and Vancouver], Sangudo sub [to Whitecourt], Westlock sub [to Peace River, High Level and Pine Point], Athabasca sub [to Athabasca], and Vegreville sub [to Winnipeg].

Highways:

Highway 2, Alberta's north/south route, goes directly through St. Albert to southern and northern points, including Calgary and the United States, Athabasca, Peace River via Highway 44, and High Level and N.W.T. via Highway 44 and Highway 35.

The Yellowhead Highway 16, western Canada's east/west route, is located 5 km south of St. Albert and extends east to Winnipeg and west to Prince Rupert.

Other connecting highways includes Highway 28 leading to Fort McMurray via Highway 63, and Highway 43 leading to Whitecourt and Grande Prairie via Highway 633.

Trucking Firms:

St. Albert is served by more than a dozen local and major regional trucking firms with carrier tariffs usually including St. Albert as a

delivery point in the Edmonton area with no additional charges.

Bus Services:

Greyhound Bus Lines travels through St. Albert three times daily to Peace River and Fort McMurray. Passengers can be dropped off in St. Albert when travelling from Peace River and Fort McMurray. All other destinations via Greyhound Bus Lines are available through downtown Edmonton's Greyhound Depot. [Greyhound Canada](#)

St. Albert Transit provides regular service within St. Albert as well as into Edmonton. St. Albert Transit provides regular service to Edmonton so that all points within the City of Edmonton can be accessed by transferring to the Edmonton Transit System. There is no extra charge for transferring to the City of Edmonton Transit. [St. Albert Transit](#)

Couriers and Taxis:

St. Albert has several local cab companies which provide service to St. Albert residents and customers throughout the metro Edmonton area. A courier delivery service is also available through this firm. In addition Edmonton-based firms provide service to St. Albert.

A number of metro Edmonton and national courier firms conduct business in St. Albert. In addition, there are numerous St. Albert courier firms providing local service.



St. Albert Transit (StAT) provides regular bus service within the City of St. Albert and to major destinations in Edmonton. The City's fleet ranges in size and uses from articulated buses (above) to low-floor buses to transportation for special needs.

Utilities

Electrical Power:

EPCOR
1-800-667-2345

Natural Gas:

ATCO
(780) 424-5222

Telephone:

Telus
310-2255

Water Supply:

Water is supplied to St. Albert by the City of Edmonton. Water pressure varies a little from area to area with average pressure being 55 pounds per square inch. The storage capacity is 31.8 million litres with average daily consumption of 12.9 million litres.

For further information on water service contact the City of St. Albert Utilities - (780) 459-1520.

Waste Management:

St. Albert's sewage treatment is handled by the Capital Region Sewage Commission in a highly automated, computerized treatment facility. The capacity is 180 million litres per day.

For further information on sewer service contact the City of St. Albert Utilities [Tel: (780)459-1520].

Residential garbage collection and disposal is handled by the City of St. Albert on a weekly basis, while commercial/industrial collection and disposal is handled by private contractors. Dry waste is disposed of at Waste Management of Edmonton landfill located 3 km south of St. Albert on 170th Street. Also, St. Albert offers a depot recycling program on Chevigny Street which handles such products as newsprint, tin cans, metal, glass, milk cartons, corrugated cardboard, mixed paper, plastics and garden waste. For further information on sanitation disposal or recycling, contact the City of St. Albert Engineering Services [Tel: (780)459-1654].

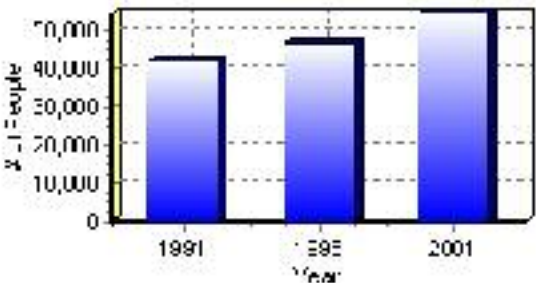
Population

Total Population

Population 2004*	54,588
Population 2003*	54,588
Population 2002*	53,081
Population 2001**	53,080
Population 2000*	51,716
Population 1996**	46,888
Population 1991**	42,146
Population % change 1991-1996	10.11%
Population % change 1996-2001	11.67%

* Source: Official Population List, Alberta Municipal Affairs
** Source: Statistics Canada 1991, 1996, & 2001 Census

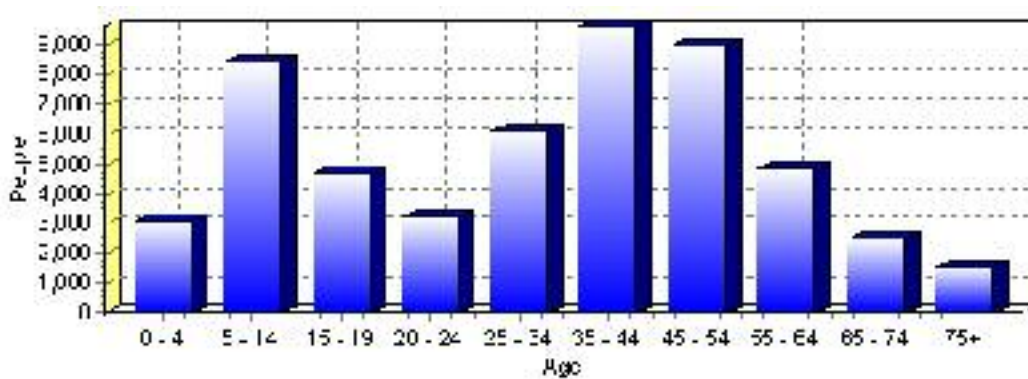
Total Population 1991-2001



Population by Age and Gender	1996 Male	1996 Female	1996 Total	2001 Male	2001 Female	2001 Total
Age 0 - 4	1,535	1,510	3,045	1,620	1,480	3,100
Age 5 - 14	4,235	3,970	8,205	4,260	4,140	8,400
Age 15 - 19	2,130	1,980	4,110	2,400	2,295	4,695
Age 20 - 24	1,520	1,475	2,995	1,685	1,570	3,255
Age 25 - 34	2,820	3,090	5,910	2,880	3,220	6,100
Age 35 - 44	4,285	4,730	9,015	4,585	5,050	9,635
Age 45 - 54	3,730	3,660	7,390	4,380	4,610	8,990
Age 55 - 64	1,740	1,705	3,445	2,505	2,360	4,865
Age 65 - 74	840	925	1,765	1,175	1,310	2,485
Age 75 and older	360	640	1,000	575	970	1,545
Total All Persons	23,205	23,680	46,885	26,080	27,005	53,085

Source: Statistics Canada 1996 & 2001 Census (numbers may not add up due to rounding)

St. Albert Population by Age Group (2001)

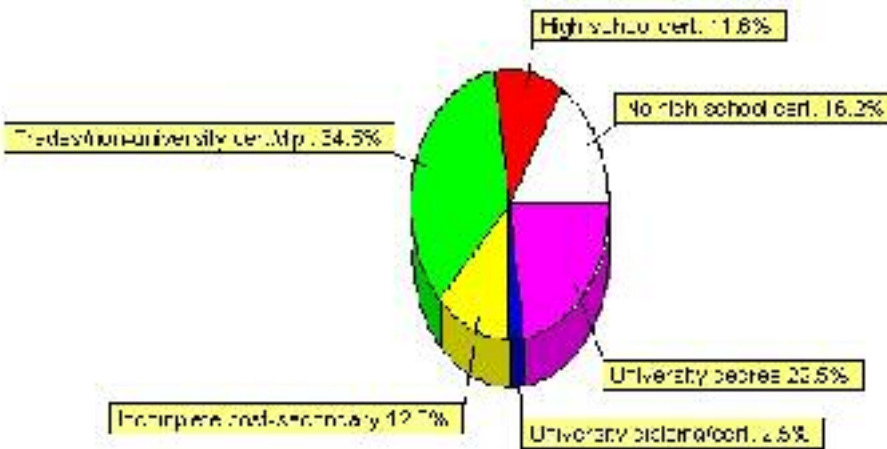


Education Statistics

Highest level of schooling for Population 20yrs and older	2001	%
People without high school certificates	5,915	16.18%
People with high school certificates	4,225	11.55%
People with trades or non-university certificate or diploma	12,610	34.49%
People with post-secondary education (not completed)	4,665	12.76%
People with university diploma/certificate	925	2.53%
People with university degree	8,225	22.49%
Total Population 20 years and older	36,565	100.00%

Source: Statistics Canada 2001 Census (numbers may not add up due to rounding)

St. Albert Highest Level of Schooling 2001



Population with Post Secondary Qualifications	1996	%	2001	%
Agriculture and biological sciences	540	3.07%	715	3.28%
Commerce, management and business administration	4,320	24.59%	4,905	22.47%
Educational, recreational and counseling services	2,335	13.29%	2,930	13.42%
Engineering and applied science tech. and trades	3,895	22.17%	4,770	21.86%
Engineering and applied sciences	750	4.27%	940	4.31%
Fine and applied arts	750	4.27%	1,020	4.67%
Health professionals, science and technologies	2,240	12.75%	2,895	13.26%
Humanities and related fields	665	3.79%	895	4.10%
Mathematics and physical sciences	580	3.30%	565	2.59%
Social sciences and related fields	1,465	8.34%	2,140	9.81%
Other and/or no specialization	20	0.11%	50	0.23%
Total people with post secondary qualifications	17,565	100.00%	21,825	100.00%
Females with post-secondary qualifications	8,475	48.25%	10,680	48.93%
Males with post-secondary qualifications	9,090	51.75%	11,145	51.07%

Source: Statistics Canada 1996 & 2001 Census (numbers may not add up due to rounding)

Labour Force

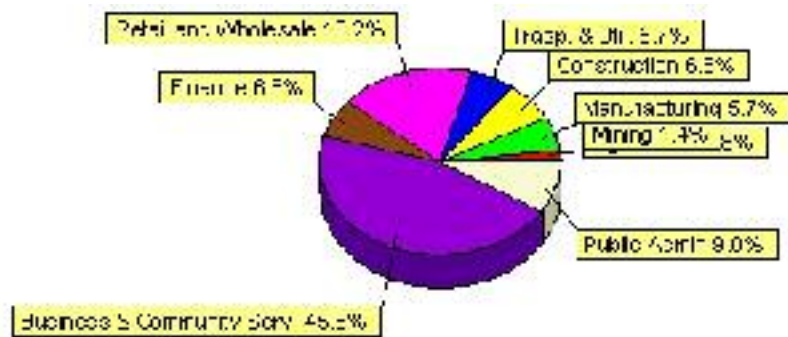
Labour force by activity	1996	2001
In the labour force, both sexes	27,780	31,545
Not in the labour force, both sexes	7,540	9,710
Total population 15 and over	35,315	41,255
Employed, both sexes	26,225	30,265
Unemployed, both sexes	1,555	1,285
Participation rate, both sexes	79.00%	77.00%
Unemployment rate, both sexes	6.00%	4.00%

Source: Statistics Canada 1996 & 2001 Census (numbers may not add up due to rounding)

Labour Force by Industry Division	1996	% of total	2001	% of total
Agriculture	205	0.75%	260	0.83%
Mining	325	1.19%	455	1.45%
Manufacturing	2,065	7.54%	1,795	5.72%
Construction	1,790	6.54%	2,145	6.83%
Transportation. & Utilities	2,225	8.13%	1,800	5.73%
Retail and Wholesale	5,820	21.26%	5,710	18.19%
Finance	1,620	5.92%	2,070	6.59%
Business & Community Services	11,210	40.96%	14,325	45.64%
Public Administration	2,460	8.99%	2,820	8.98%
Total All Industries	27,370	100.00%	31,390	100.00%

Source: Statistics Canada 1996 & 2001 Census (numbers may not add up due to rounding)

St. Albert Labour Force By Industry - 2001



Labour Force by Major Occupational Groups	1996	%	2001	%
Management occupations	3,325	12.15%	4,690	14.94%
Business, Finances and administrative occupations	6,285	22.96%	6,390	20.36%
Natural and applied sciences and related occupations	1,595	5.83%	2,150	6.85%
Health occupations	1,435	5.24%	1,980	6.31%
Occupations in social science; education; government and religion	2,220	8.11%	2,985	9.51%
Occupations in art; culture; recreation and sport	850	3.11%	790	2.52%

Sales and service occupations	7,570	27.66%	7,330	23.36%
Trades; transport; equipment operators and related occupations	3,035	11.09%	4,070	12.97%
Occupations unique to primary industry	380	1.39%	515	1.64%
Occupations unique to processing; manufacturing and utilities	670	2.45%	490	1.56%
Occupations not elsewhere classified	410	1.50%	165	0.53%
Total - All Occupations (major groups)	27,370	100.00%	31,385	100.00%
Females - All Occupations	12,925	47.22%	14,990	47.76%
Males - All Occupations	14,445	52.78%	16,400	52.25%

Source: Statistics Canada 1996 & 2001 Census (numbers may not add up due to rounding)

Income

Family Income (Number of Families)	1996	%	2001	%
less than \$19,999	425	3.64%	560	4.60%
\$20,000 - \$39,999	1,560	13.37%	1,635	13.42%
\$40,000 - \$59,999	2,725	23.36%	2,285	18.75%
\$60,000 and over	6,955	59.62%	7,975	65.45%
Total number of families	11,665	100.00%	12,455	102.22%
Average family income	\$73,452		\$90,472	
Median family income	\$67,177		\$80,418	

Source: Statistics Canada 1996 & 2001 Census (numbers may not add up due to rounding)

Household Income (Number of Households)	1996	%	2001	%
less than \$19,999	1,295	8.43%	1,085	6.00%
\$20,000 - \$39,999	2,795	18.19%	2,435	13.46%
\$40,000 - \$59,999	3,575	23.27%	2,865	15.84%
\$60,000 and over	1,815	11.81%	11,710	64.75%
Total number of households	15,365	100.00%	18,085	100.00%
Average household income	\$65,744		\$85,005	
Median household income	\$59,975		\$74,848	

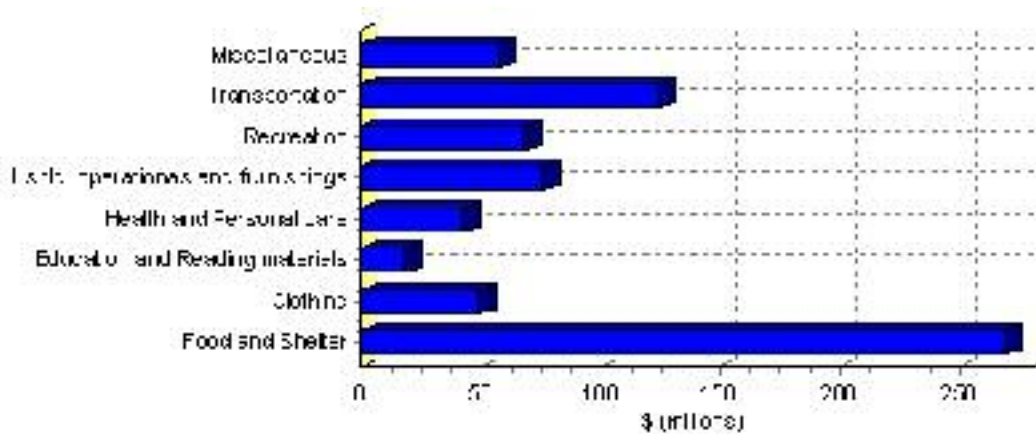
Source: Statistics Canada 1996 & 2001 Census (numbers may not add up due to rounding)

Family Expenditure

Expenditure Category	1992	% of total	1996	% of total
Food and Shelter	\$0	0.00%	\$269,417,276	38.15%
Clothing	\$0	0.00%	\$49,005,169	6.94%
Education and Reading materials	\$0	0.00%	\$18,465,483	2.61%
Health and Personal care	\$0	0.00%	\$42,595,170	6.03%
Hshld. operations and furnishings	\$0	0.00%	\$75,837,567	10.74%
Recreation	\$0	0.00%	\$68,438,033	9.69%
Transportation	\$0	0.00%	\$124,722,306	17.66%
Miscellaneous	\$0	0.00%	\$57,784,261	8.18%
Total Current Consumption	\$0	0.00%	\$706,265,265	100.00%
Total # of Households	0		15,365	
Average Consumption per Household	\$0		\$45,966	

Source: Statistics Canada Family Expenditure Survey 1992 & 1996 (numbers may not add up due to rounding).

St. Albert Family Expenditures (1996)

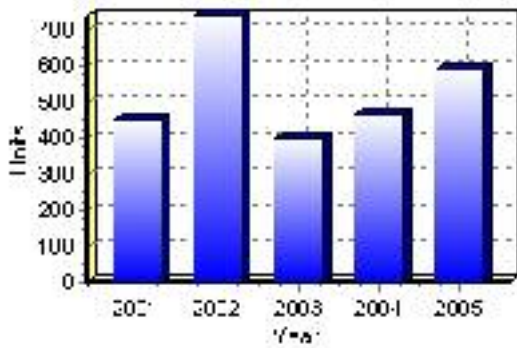


Building Permits

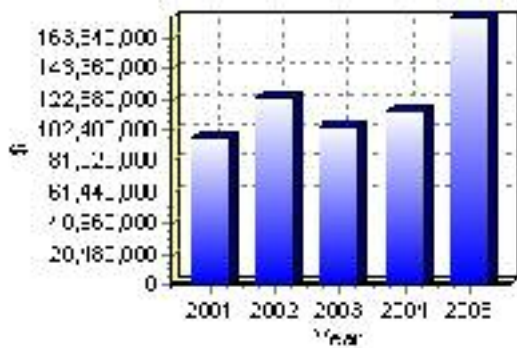
Total Building Permit Values	2001	2002	2003	2004	2005
Building Permits Value, Commercial	\$13,630,000	\$10,146,000	\$18,267,000	\$4,880,000	\$49,378,000
Building Permits Value, Industrial	\$4,620,000	\$910,000	\$4,316,000	\$1,194,000	\$306,000
Building Permits Value, Institutional	\$9,353,000	\$3,422,000	\$2,501,000	\$13,995,000	\$6,980,000
Building Permits Value, Residential	\$69,149,000	\$108,931,000	\$79,946,000	\$94,298,000	\$120,033,000
Building Permits Value, Total	\$96,752,000	\$123,409,000	\$105,030,000	\$114,367,000	\$176,697,000
Total Housing Starts	448	736	397	463	585

Source: Statistics Canada 2000-2004 Building Permits (numbers may not add up due to rounding)

Total Housing Starts



Value of Building Permits



Dwellings

Occupied Private Dwellings by Type	1996	% of total	2001	% of total
Apartments	1,470	9.57%	1,785	9.87%
Detached Duplexes	30	0.20%	85	0.47%
Movable Dwellings	0	0.00%	5	0.03%
Other single attached house	0	0.00%	5	0.03%
Row and semi-detached house	2,105	13.70%	2,345	12.97%
Single-detached house	11,765	76.57%	13,860	76.64%
Total number of occupied private dwellings	15,365	100.00%	18,085	100.00%
Private dwellings, owned	13,065	85.03%	15,875	87.78%
Private Dwellings, rented	2,300	14.97%	2,210	12.22%

Source: Statistics Canada 1996 & 2001 Census (numbers may not add up due to rounding)

Private Dwellings by Period of Construction	# of Dwellings	% of total
Period of construction, before 1946	55	0.30%
Period of construction, 1946 - 1960	685	3.79%
Period of construction, 1961 - 1970	2,215	12.25%
Period of construction, 1971 - 1980	6,095	33.72%
Period of construction, 1981 - 1990	3,960	21.91%
Period of construction, 1991 - 2001	5,065	28.02%
Total number of private dwellings constructed	18,075	100.00%

Source: Statistics Canada 2001 Census (numbers may not add up due to rounding)

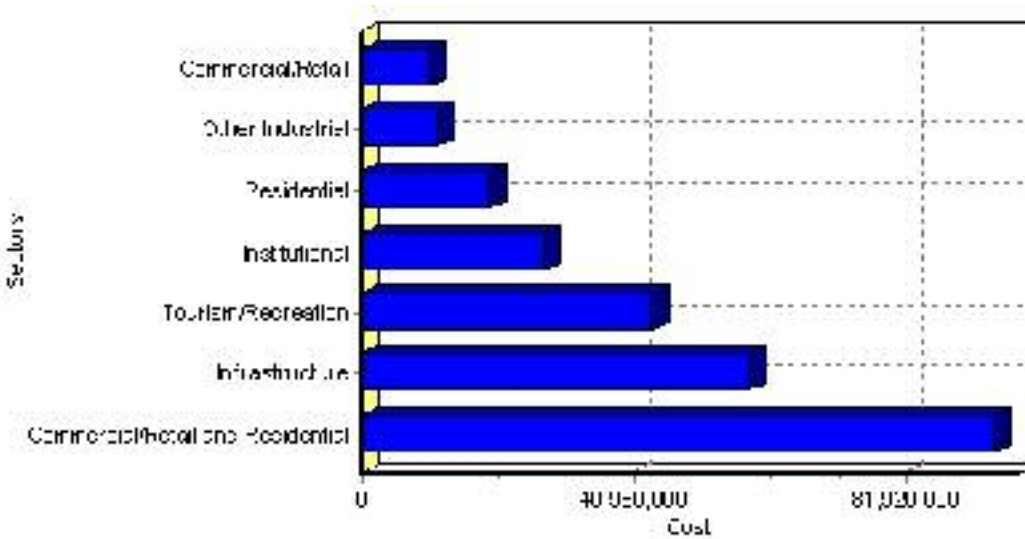
Projects

Summary of Projects in St. Albert as of September 2006

Project Sector	Number of Projects	Project Cost
Commercial/Retail and Residential	1	\$95,000,000
Infrastructure	5	\$58,400,000
Tourism/Recreation	2	\$43,500,000
Institutional	8	\$27,500,000
Residential	4	\$19,280,000
Other Industrial	6	\$11,365,000
Commercial/Retail	11	\$10,255,000
Total	37	\$265,300,000

This inventory lists projects in Alberta that have recently been completed, are under construction, or are proposed to start construction. Not all projects are listed due to reasons of confidentiality and/or due to information not being available at the time of printing. Project data is obtained from public information sources, where possible, this data has been verified with the project proponent/developer, users of the Inventory may wish to confirm project data with the proponent/developer. The inventory does not breakdown project expenditures by any given year. The cost of a project is the value of expenditures expected over all phases of project construction, which may span over two or more years. Cost of projects listed in the Inventory are estimated values only. Source: Alberta Economic Development, 2004.

Value of Projects by Sector (as of September 2006)



Project Status	Number of Projects	Project Cost
Announced	1	\$20,000,000
Completed	11	\$57,610,000
Nearing Completion	2	\$31,900,000
Proposed	6	\$29,800,000
Under Construction	17	\$125,990,000
Total	37	\$265,300,000

This inventory lists projects in Alberta that have recently been completed, are under construction, or are proposed to start construction. Not all projects are listed due to reasons of confidentiality and/or due to information not being available at the time of printing. Project data is obtained from public information sources, where possible, this data has been verified with the project proponent/developer, users of the Inventory may wish to confirm project data with the proponent/developer. The inventory does not breakdown project expenditures by any given year. The cost of a project is the value of expenditures expected over all phases of project construction, which may span over two or more years. Cost of projects listed in the Inventory are estimated values only. Source: Alberta Economic Development, 2004.

Largest Projects in St. Albert as of September 2006

Company Name	Project Description	Project Location	Project Cost	Construction Schedule	Status
Christenson Developments / Citadel Care Corp.	'Citadel Village' Seniors Health Care Complex	St. Albert	\$95,000,000	2003-2009	Under Construction
City of St. Albert	Multi - Purpose Leisure Centre (MPLC)	St. Albert	\$42,000,000	2005-2006	Completed
City of St. Albert	West Boundary Road phase 1	St. Albert	\$28,400,000	2005-2006	Nearing Completion
City of St. Albert	West Boundary Road phases 2 and 3	St. Albert	\$20,000,000	2006-2007	Announced
Medican	'Sierras of Inglewood' APARTMENT CONDOMINIUMS (PHASES 2 AND 3)	St. Albert	\$9,200,000	2006-2006	Under Construction
City of St. Albert	Fire Hall #3	St. Albert	\$7,000,000	-	Proposed
United Inc.	Retirement and Assisted Living Facility	St. Albert	\$6,800,000	-	Proposed
Bellerose Properties	Townhouse Complex	St. Albert	\$5,500,000	2006-2007	Under Construction
Alberta Infrastructure and Transportation*	Modernization	St. Albert	\$5,100,000	2005-2006	Completed
Northern Alberta Business Incubator (NABI)	New Office Facility	St. Albert	\$5,000,000	-	Proposed

Disclaimer: Information in this profile has been provided from a variety of external sources. Although every effort has been made to ensure the accuracy, currency and reliability of the content and data, AlbertaFirst.com Ltd. accepts no responsibility in this regard.

© AlbertaFirst.com Ltd., 2006.