

Coalhurst

www.town.coalhurst.ab.ca

Welcome

If you are looking for a residential town with quiet streets, good schools, caring people and lots of potential - this is the place for you. Our proximity to the City of Lethbridge and access to their shopping, post-secondary, medical, seniors and recreational facilities gives us the best of two worlds - city amenities and small town living.

We have residential developments offering a choice of building lots. Owning a home in Coalhurst is a reality. Our growth is steady and without many of the problems being experienced by communities who are outgrowing their infrastructure. Combined property tax and utility rates are one of the lowest in Alberta. The servicing of our long term debt takes only 7.8% of our total operating budget! Entrepreneurs are always happy to hear we have no business tax.

Being part of the Alaska - Mexico corridor, Highway #3 is a four lane divided highway bringing the world to us. We are one hour from the U.S. border, one and a half hours from the British Columbia border and two hours from the City of Calgary. In addition to road transport, we also enjoy the convenience of the County of Lethbridge Airport and are adjacent to the CP Rail main marshalling yards at Kipp.

We invite you to read on, find out why the Town of Coalhurst may be just what you are looking for in a community where you can live, raise your family, build your business, develop and grow.



Our silhouettes welcome everyone to our Town.

Area Overview

In August 1910 a mine shaft was sunk approximately 10 km west of Lethbridge. This coal mine was the beginning of a community to be named Coalhurst. The coal mine was closed in 1935 following a tragic mining accident resulting in the death of 16 miners.

Today, Coalhurst is able to take advantage of its close proximity to Lethbridge and offer its residents the conveniences of a large urban centre, while maintaining a smaller town atmosphere.



Community Services

Municipal

Town of Coalhurst
Box 456
Coalhurst, Alberta
T0L 0V0
Tel: 403-381-3033
Fax: 403-381-2924
E-mail: main@town.coalhurst.ab.ca

Federal

Canada Post Office



Community Lifestyle

Recreation

Miners Memorial Park has 4 baseball diamonds, 3 soccer fields, horseshoe pits, an outdoor ice rink, over-night camping area, a social area and playground. Our social area is a privately fenced area with a covered facility including a kitchen, gas grills, fireplace and picnic tables. Great for company socials, weddings and family reunions.

The Coalhurst and District Community Centre consists of a main hall and stage area, and general meeting rooms. We can accommodate functions of up to 300. Great for weddings, gift openings, meetings, family reunions.

www.town.coalhurst.ab.ca

Community Organizations

www.town.coalhurst.ab.ca

Restaurants

Coyote Grill & Wok offer an excellent chinese and western menu.



David A Veres Social Area in Miners Memorial Park

Economic Base

Coalhurst's economic base is agriculture.

Economic Facts

Major businesses in Coalhurst include a cedar retail outlet, cabinet manufacturing, roofers, directional drilling and fountain factory. Service available locally include restaurant, gasoline/convenience stores, floral design, car wash, computer software instruction, various trades, picture framing, barber shop, beauty salons, self storage, taxidermy, DJs, landscaping and Legion.

For a complete listing of our 2005 Business Directory:

[Business Directory Information/List](#)

Financial Institutions

All your financial needs can be taken care of in the City of Lethbridge.



Education

Coalhurst is part of the Palliser Regional Division #26, headquartered in Lethbridge [Tel: 403-328-4111]. [Palliser Regional School Division](#) Public schools in Coalhurst include Coalhurst Elementary School [Preschool - 6] and Coalhurst High School [7-12]. www.town.coalhurst.ab.ca



Coalhurst Elementary School (Preschool to grade 6) - through the playground

Emergency Services

Emergency Services

FOR FIRE, POLICE OR AMBULANCE - EMERGENCY SERVICE PLEASE CALL 911

Fire Protection

Coalhurst is served by a volunteer fire department (403.381.3633)

Police Services

Coalhurst is served by the Lethbridge detachment of the Royal Canadian Mounted Police

Tel: 403-329-5010 (complaints)

403-329-5080 (administration).

Ambulance Services

Ambulance is provided from Lethbridge (Tel: 403-327-3340)

www.town.coalhurst.ab.ca

Health Care

Hospital services are provided 10 minutes away by the Lethbridge Regional Hospital located at 960 19 Street South, Lethbridge.

Telephone : 403.382.6111

Medical Practitioners

Residents access medical practitioners through clinics and private practices in the City of Lethbridge.

Key Contacts for Business Development

Municipal

Town of Coalhurst

Box 456

Coalhurst, Alberta

T0L 0V0

Tel: 403-381-3033

Fax: 403-381-2924
E-mail: main@town.coalhurst.ab.ca
Webpage: www.town.coalhurst.ab.ca

Ed Knox
Mayor

Marge Williams
Administrator
mwilliams@town.coalhurst.ab.ca

Provincial

Alberta Economic Development
105, 200 5th Avenue South
Lethbridge, Alberta
T1J 4L1
Tel: 403-381-5414
Fax: 403-381-5741
Mary Swanek, Information Officer
mary.swanek@gov.ab.ca

Barry McFarland
Member of the Legislative Assembly [MLA]
Little Bow Constituency

Constituency Office
P.O. Box 231
111 Carman Street
Carmangay, AB
T0L 0N0
Phone: (403) 643-2077
Toll Free: 1-800-563-0917
Fax: (403) 643-2024
little.bow@assembly.ab.ca

Legislature Office
#410 Legislature Building
10800 - 97 Avenue
Edmonton, AB
T5K 2B6
Phone: (780) 427-0879
Fax: (780) 422-0351

Federal

Lethbridge, Alberta
CASSON, Rick (Conservative)

Parliamentary Address
House of Commons
Ottawa, Ontario
K1A 0A6
Telephone: (613) 996-0633

Fax: (613) 995-5752
E-Mail: Casson.R@parl.gc.ca

Constituency Address

255 - 8th Street South
Lethbridge, Alberta
T1J 4Y1
Telephone: (403) 320-0070 1-877-327-0135
Fax: (403) 380-4026
TTY:
E-Mail: casson@rickcasson.com

Location

The Town of Coalhurst is just a short 5 minute drive west of the City of Lethbridge and 207 km south of the City of Calgary.

Post Secondary Education

Coalhurst residents have easy access to the Lethbridge Community College and the University of Lethbridge, both located in Lethbridge.

[University of Lethbridge](#)
[Lethbridge Community College](#)

Taxation

	<u>Residential/Farmland</u>	<u>Non-Residential</u>
2005		
Municipal Tax Rate	8.2510	10.8280
Education - Alberta School Foundation Fund Tax Rate	4.1690	5.7140
Allowance for Non-Collection of Requisitioned Taxes	.1720	.1720
Seniors Lodge Accommodation Tax Rate	.1170	.1170

Transportation

Air Services

The nearest airport, commercial and air freight services are at Lethbridge [10 km east].
[Lethbridge County Airport](#)

Rail Services

Coalhurst is served by Canadian Pacific Railways. Spur trackage is available.

Highways

Highway 3 is the connecting highway, leading east to Lethbridge and west to Highway 2.

Trucking Firms

Fort MacLeod Transportation
Other local, regional and national carriers from Lethbridge

Couriers and Taxis

Regional couriers companies from Lethbridge

Utilities

Water, Sewer, Garbage

Town of Coalhurst
Box 456, 100 - 51 Avenue
Coalhurst, Alberta
T0L 0V0
Telephone : 403.381.3033

Residential Rates (effective January 1, 2005)

Water rate \$31.35 for 28 cubic meters plus \$.96 for each additional cubic meter/month
Sewer rate \$18.06/month
Garbage rate \$9.03/month

Commercial Rates (effective January 1, 2005)

Water - \$31.35 for 28 cubic meters plus \$.96 for each additional cubic meter/month.
Sewer rate \$18.06/month
Garbage rate \$12.64/month

Electricity

ENMAX
Telephone : 1.877.571.7111

Natural Gas

ATCO Gas
Atco
410 Stafford Drive North
Lethbridge, Alberta
T1H 2A9
Telephone : 403.310.5678

Telephone

Telus
808 - 4th. Avenue, South
Lethbridge, Alberta
T1J 0P2
Tel: 403-329-5911

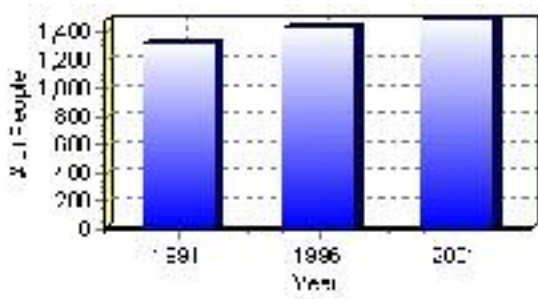
Population

Total Population

Population 2004*	1,493
Population 2003*	1,476
Population 2002*	1,476
Population 2001**	1,475
Population 2000*	1,465
Population 1996**	1,439
Population 1991**	1,322
Population % change 1991-1996	8.13%
Population % change 1996-2001	2.51%

* Source: Official Population List, Alberta Municipal Affairs
** Source: Statistics Canada 1991, 1996, & 2001 Census

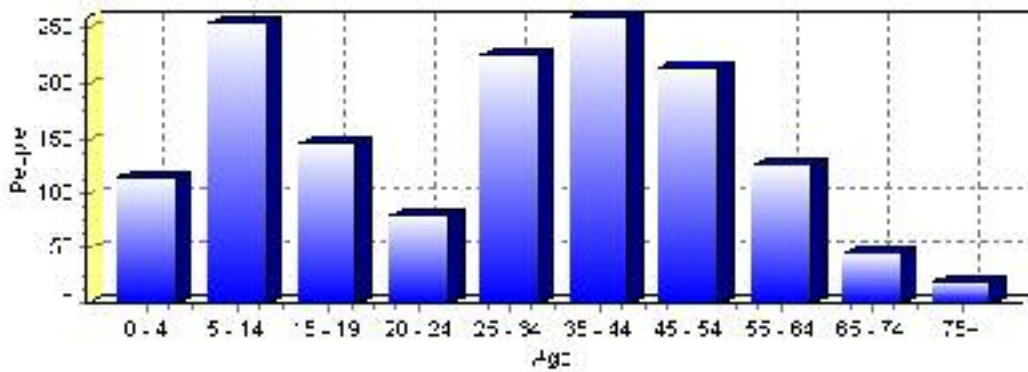
Total Population 1991-2001



Population by Age and Gender	1996 Male	1996 Female	1996 Total	2001 Male	2001 Female	2001 Total
Age 0 - 4	70	45	115	55	60	115
Age 5 - 14	170	155	325	135	120	255
Age 15 - 19	60	35	95	75	70	145
Age 20 - 24	35	45	80	45	35	80
Age 25 - 34	115	115	230	105	120	225
Age 35 - 44	135	145	280	135	125	260
Age 45 - 54	95	75	170	110	105	215
Age 55 - 64	45	40	85	60	65	125
Age 65 - 74	25	10	35	25	20	45
Age 75 and older	5	5	10	10	10	20
Total All Persons	755	680	1,435	755	720	1,475

Source: Statistics Canada 1996 & 2001 Census (numbers may not add up due to rounding)

Coalhurst Population by Age Group (2001)

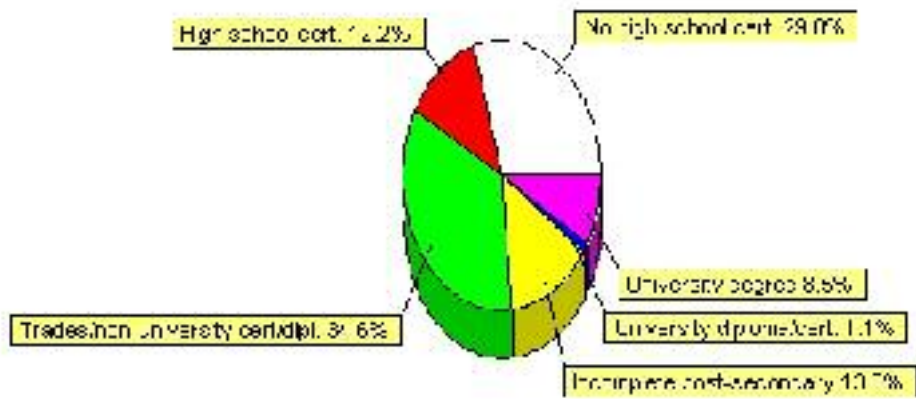


Education Statistics

Highest level of schooling for Population 20yrs and older	2001	%
People without high school certificates	280	29.79%
People with high school certificates	115	12.23%
People with trades or non-university certificate or diploma	325	34.57%
People with post-secondary education (not completed)	130	13.83%
People with university diploma/certificate	10	1.06%
People with university degree	80	8.51%
Total Population 20 years and older	940	100.00%

Source: Statistics Canada 2001 Census (numbers may not add up due to rounding)

Coalhurst Highest Level of Schooling 2001



Population with Post Secondary Qualifications	1996	%	2001	%
Agriculture and biological sciences	25	6.33%	30	7.23%
Commerce, management and business administration	115	29.11%	90	21.69%
Educational, recreational and counseling services	10	2.53%	35	8.43%
Engineering and applied science tech. and trades	150	37.97%	125	30.12%
Engineering and applied sciences	0	0.00%	0	0.00%
Fine and applied arts	10	2.53%	15	3.61%
Health professionals, science and technologies	35	8.86%	80	19.28%
Humanities and related fields	20	5.06%	0	0.00%
Mathematics and physical sciences	10	2.53%	0	0.00%
Social sciences and related fields	25	6.33%	25	6.02%
Other and/or no specialization	0	0.00%	0	0.00%
Total people with post secondary qualifications	395	100.00%	415	100.00%
Females with post-secondary qualifications	195	49.37%	205	49.40%
Males with post-secondary qualifications	200	50.63%	210	50.60%

Source: Statistics Canada 1996 & 2001 Census (numbers may not add up due to rounding)

Labour Force

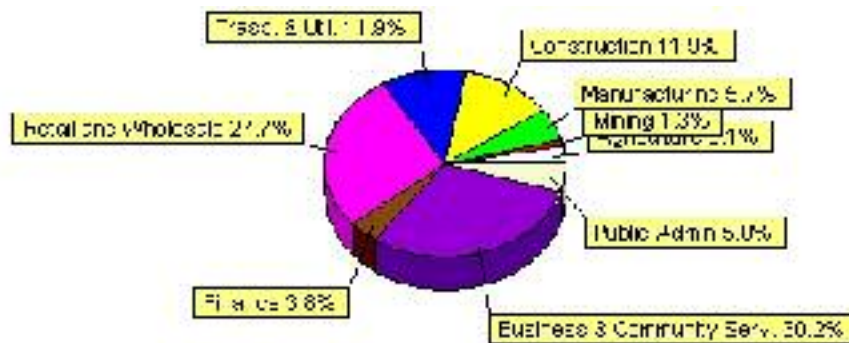
Labour force by activity	1996	2001
In the labour force, both sexes	800	805
Not in the labour force, both sexes	185	290
Total population 15 and over	985	1,095
Employed, both sexes	730	775
Unemployed, both sexes	70	30
Participation rate, both sexes	81.00%	74.00%
Unemployment rate, both sexes	8.00%	4.00%

Source: Statistics Canada 1996 & 2001 Census (numbers may not add up due to rounding)

Labour Force by Industry Division	1996	% of total	2001	% of total
Agriculture	10	1.27%	25	3.14%
Mining	10	1.27%	10	1.26%
Manufacturing	135	17.20%	45	5.66%
Construction	120	15.29%	95	11.95%
Transportation. & Utilities	55	7.01%	95	11.95%
Retail and Wholesale	125	15.92%	220	27.67%
Finance	15	1.91%	30	3.77%
Business & Community Services	235	29.94%	240	30.19%
Public Administration	45	5.73%	40	5.03%
Total All Industries	785	100.00%	795	100.00%

Source: Statistics Canada 1996 & 2001 Census (numbers may not add up due to rounding)

Coalhurst Labour Force By Industry - 2001



Labour Force by Major Occupational Groups	1996	%	2001	%
Management occupations	25	3.18%	70	8.75%
Business, Finances and administrative occupations	145	18.47%	140	17.50%
Natural and applied sciences and related occupations	40	5.10%	35	4.38%
Health occupations	25	3.18%	60	7.50%
Occupations in social science; education; government and religion	20	2.55%	30	3.75%
Occupations in art; culture; recreation and sport	10	1.27%	25	3.13%

Sales and service occupations	245	31.21%	180	22.50%
Trades; transport; equipment operators and related occupations	180	22.93%	195	24.38%
Occupations unique to primary industry	30	3.82%	35	4.38%
Occupations unique to processing; manufacturing and utilities	65	8.28%	30	3.75%
Occupations not elsewhere classified	15	1.91%	10	1.25%
Total - All Occupations (major groups)	785	100.00%	800	100.00%
Females - All Occupations	355	45.22%	340	42.50%
Males - All Occupations	430	54.78%	460	57.50%

Source: Statistics Canada 1996 & 2001 Census (numbers may not add up due to rounding)

Income

Family Income (Number of Families)	1996	%	2001	%
less than \$19,999	45	12.68%	65	19.70%
\$20,000 - \$39,999	115	32.39%	80	24.24%
\$40,000 - \$59,999	95	26.76%	180	54.55%
\$60,000 and over	100	28.17%	65	19.70%
Total number of families	355	100.00%	390	118.18%
Average family income	\$44,794		\$47,833	
Median family income	\$41,277		\$49,010	

Source: Statistics Canada 1996 & 2001 Census (numbers may not add up due to rounding)

Household Income (Number of Households)	1996	%	2001	%
less than \$19,999	90	19.15%	50	9.90%
\$20,000 - \$39,999	150	31.91%	125	24.75%
\$40,000 - \$59,999	110	23.40%	180	35.64%
\$60,000 and over	75	15.96%	145	28.71%
Total number of households	470	100.00%	505	100.00%
Average household income	\$41,854		\$49,197	
Median household income	\$39,003		\$48,943	

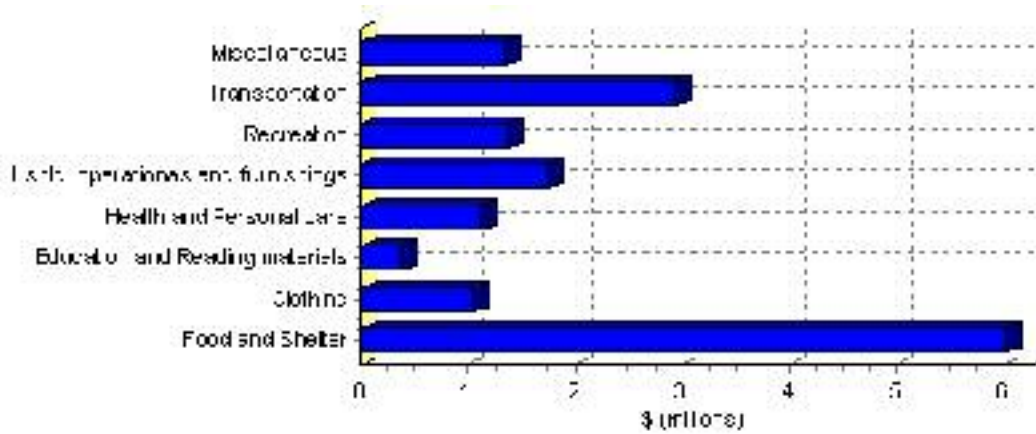
Source: Statistics Canada 1996 & 2001 Census (numbers may not add up due to rounding)

Family Expenditure

Expenditure Category	1992	% of total	1996	% of total
Food and Shelter	\$4,251,900	37.44%	\$6,024,428	37.76%
Clothing	\$752,900	6.63%	\$1,046,558	6.56%
Education and Reading materials	\$217,995	1.92%	\$369,358	2.31%
Health and Personal care	\$713,635	6.28%	\$1,130,342	7.08%
Hshld. operations and furnishings	\$1,238,300	10.90%	\$1,748,119	10.96%
Recreation	\$873,080	7.69%	\$1,363,370	8.54%
Transportation	\$2,353,775	20.73%	\$2,928,050	18.35%
Miscellaneous	\$949,750	8.36%	\$1,345,477	8.43%
Total Current Consumption	\$11,355,400	100.00%	\$15,955,702	100.00%
Total # of Households	405		467	
Average Consumption per Household	\$28,038		\$34,166	

Source: Statistics Canada Family Expenditure Survey 1992 & 1996 (numbers may not add up due to rounding).

Coalhurst Family Expenditures (1996)



Dwellings

Occupied Private Dwellings by Type	1996	% of total	2001	% of total
Apartments	0	0.00%	0	0.00%
Detached Duplexes	0	0.00%	5	1.00%
Movable Dwellings	140	29.79%	135	27.00%
Other single attached house	0	0.00%	0	0.00%
Row and semi-detached house	20	4.26%	15	3.00%
Single-detached house	305	64.89%	345	69.00%
Total number of occupied private dwellings	470	100.00%	500	100.00%
Private dwellings, owned	395	84.04%	445	89.00%
Private Dwellings, rented	65	13.83%	55	11.00%

Source: Statistics Canada 1996 & 2001 Census (numbers may not add up due to rounding)

Private Dwellings by Period of Construction	# of Dwellings	% of total
Period of construction, before 1946	45	8.82%
Period of construction, 1946 - 1960	20	3.92%
Period of construction, 1961 - 1970	35	6.86%
Period of construction, 1971 - 1980	155	30.39%
Period of construction, 1981 - 1990	160	31.37%
Period of construction, 1991 - 2001	95	18.63%
Total number of private dwellings constructed	510	100.00%

Source: Statistics Canada 2001 Census (numbers may not add up due to rounding)

Disclaimer: Information in this profile has been provided from a variety of external sources. Although every effort has been made to ensure the accuracy, currency and reliability of the content and data, AlbertaFirst.com Ltd. accepts no responsibility in this regard.

© AlbertaFirst.com Ltd., 2006.