

Clear Hills County

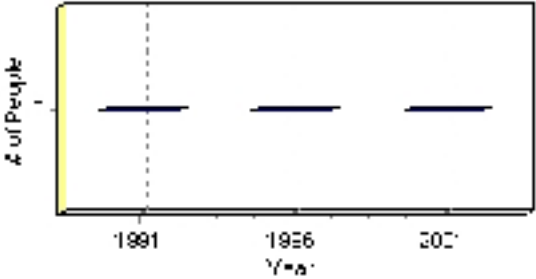
Population

Total Population

Population 2004*	0
Population 2003*	0
Population 2002*	0
Population 2001**	2,770
Population 2000*	0
Population 1996**	0
Population 1991**	0
Population % change 1991-1996	0.00%
Population % change 1996-2001	0.00%

* Source: Official Population List, Alberta Municipal Affairs
** Source: Statistics Canada 1991, 1996, & 2001 Census

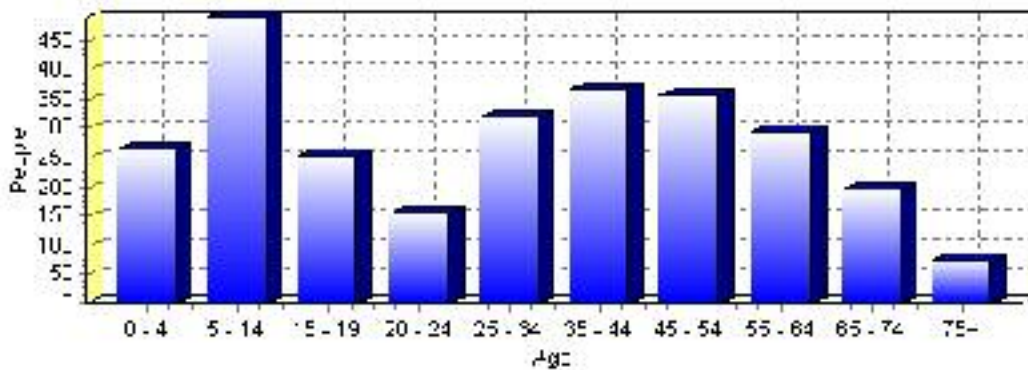
Total Population 1991-2001



Population by Age and Gender	1996 Male	1996 Female	1996 Total	2001 Male	2001 Female	2001 Total
Age 0 - 4	0	0	0	140	125	265
Age 5 - 14	0	0	0	275	215	490
Age 15 - 19	0	0	0	145	110	255
Age 20 - 24	0	0	0	85	70	155
Age 25 - 34	0	0	0	160	160	320
Age 35 - 44	0	0	0	200	165	365
Age 45 - 54	0	0	0	180	175	355
Age 55 - 64	0	0	0	160	135	295
Age 65 - 74	0	0	0	115	80	195
Age 75 and older	0	0	0	45	30	75
Total All Persons	0	0	0	1,500	1,275	2,775

Source: Statistics Canada 1996 & 2001 Census (numbers may not add up due to rounding)

Clear Hills County Population by Age Group (2001)

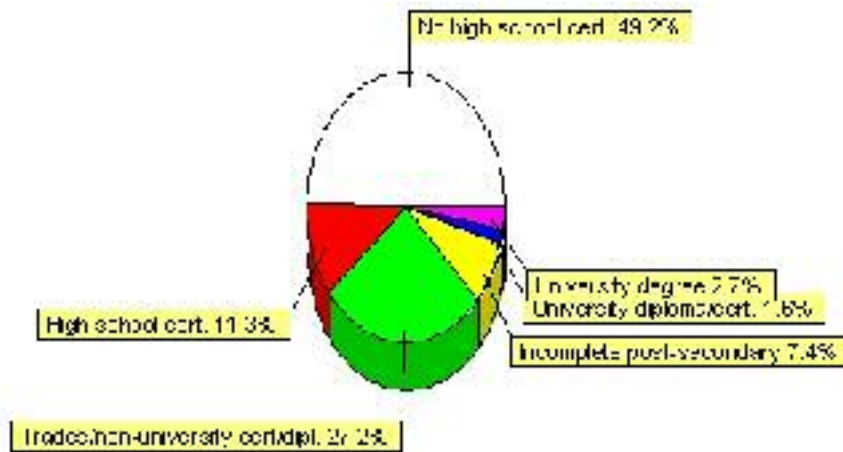


Education Statistics

Highest level of schooling for Population 20yrs and older	2001	%
People without high school certificates	895	49.18%
People with high school certificates	205	11.26%
People with trades or non-university certificate or diploma	495	27.20%
People with post-secondary education (not completed)	135	7.42%
People with university diploma/certificate	30	1.65%
People with university degree	50	2.75%
Total Population 20 years and older	1,820	100.00%

Source: Statistics Canada 2001 Census (numbers may not add up due to rounding)

Clear Hills County Highest Level of Schooling 2001



Population with Post Secondary Qualifications	1996	%	2001	%
Agriculture and biological sciences	0	0.00%	105	17.95%
Commerce, management and business administration	0	0.00%	105	17.95%
Educational, recreational and counseling services	0	0.00%	60	10.26%
Engineering and applied science tech. and trades	0	0.00%	190	32.48%
Engineering and applied sciences	0	0.00%	10	1.71%
Fine and applied arts	0	0.00%	10	1.71%
Health professionals, science and technologies	0	0.00%	55	9.40%
Humanities and related fields	0	0.00%	25	4.27%
Mathematics and physical sciences	0	0.00%	0	0.00%
Social sciences and related fields	0	0.00%	25	4.27%
Other and/or no specialization	0	0.00%	0	0.00%
Total people with post secondary qualifications	0	0.00%	585	100.00%
Females with post-secondary qualifications	0	0.00%	275	47.01%
Males with post-secondary qualifications	0	0.00%	310	52.99%

Source: Statistics Canada 1996 & 2001 Census (numbers may not add up due to rounding)

Labour Force

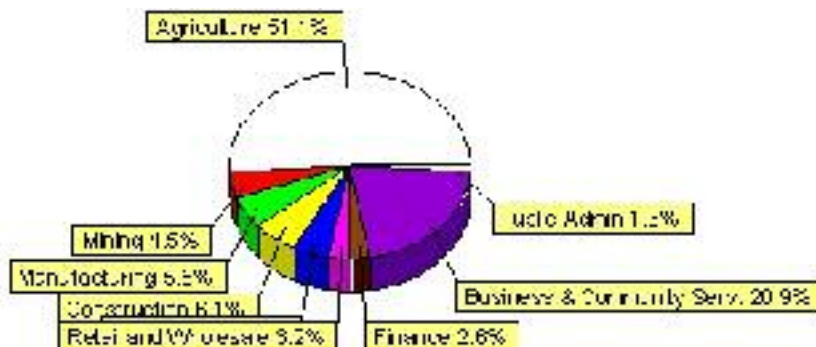
Labour force by activity	1996	2001
In the labour force, both sexes	0	1,560
Not in the labour force, both sexes	0	495
Total population 15 and over	0	2,050
Employed, both sexes	0	1,500
Unemployed, both sexes	0	55
Participation rate, both sexes	0.00%	76.00%
Unemployment rate, both sexes	0.00%	4.00%

Source: Statistics Canada 1996 & 2001 Census (numbers may not add up due to rounding)

Labour Force by Industry Division	1996	% of total	2001	% of total
Agriculture	0	0.00%	795	51.13%
Mining	0	0.00%	70	4.50%
Manufacturing	0	0.00%	85	5.47%
Construction	0	0.00%	95	6.11%
Transportation. & Utilities	0	0.00%	75	4.82%
Retail and Wholesale	0	0.00%	50	3.22%
Finance	0	0.00%	40	2.57%
Business & Community Services	0	0.00%	325	20.90%
Public Administration	0	0.00%	20	1.29%
Total All Industries	0	0.00%	1,555	100.00%

Source: Statistics Canada 1996 & 2001 Census (numbers may not add up due to rounding)

Clear Hills County Labour Force By Industry - 2001



Labour Force by Major Occupational Groups	1996	%	2001	%
Management occupations	0	0.00%	60	3.86%
Business, Finances and administrative occupations	0	0.00%	110	7.07%
Natural and applied sciences and related occupations	0	0.00%	10	0.64%
Health occupations	0	0.00%	25	1.61%
Occupations in social science; education; government and religion	0	0.00%	65	4.18%
Occupations in art; culture; recreation and sport	0	0.00%	25	1.61%

Sales and service occupations	0	0.00%	145	9.32%
Trades; transport; equipment operators and related occupations	0	0.00%	310	19.94%
Occupations unique to primary industry	0	0.00%	750	48.23%
Occupations unique to processing; manufacturing and utilities	0	0.00%	55	3.54%
Occupations not elsewhere classified	0	0.00%	0	0.00%
Total - All Occupations (major groups)	0	0.00%	1,555	100.00%
Females - All Occupations	0	0.00%	610	39.23%
Males - All Occupations	0	0.00%	945	60.77%

Source: Statistics Canada 1996 & 2001 Census (numbers may not add up due to rounding)

Income

Family Income (Number of Families)	1996	%	2001	%
less than \$19,999	0	0.00%	95	13.38%
\$20,000 - \$39,999	0	0.00%	250	35.21%
\$40,000 - \$59,999	0	0.00%	200	28.17%
\$60,000 and over	0	0.00%	130	18.31%
Total number of families	0	0.00%	675	95.07%
Average family income	\$0		\$50,183	
Median family income	\$0		\$41,573	

Source: Statistics Canada 1996 & 2001 Census (numbers may not add up due to rounding)

Household Income (Number of Households)	1996	%	2001	%
less than \$19,999	0	0.00%	175	19.02%
\$20,000 - \$39,999	0	0.00%	310	33.70%
\$40,000 - \$59,999	0	0.00%	230	25.00%
\$60,000 and over	0	0.00%	205	22.28%
Total number of households	0	0.00%	920	100.00%
Average household income	\$0		\$46,880	
Median household income	\$0		\$37,674	

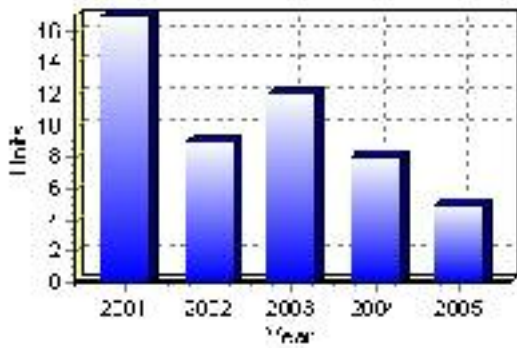
Source: Statistics Canada 1996 & 2001 Census (numbers may not add up due to rounding)

Building Permits

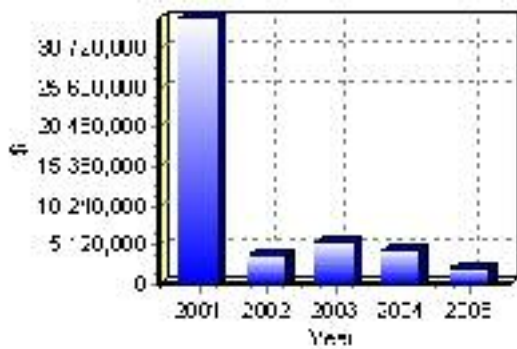
Total Building Permit Values	2001	2002	2003	2004	2005
Building Permits Value, Commercial	\$357,000	\$148,000	\$110,000	\$585,000	\$150,000
Building Permits Value, Industrial	\$32,816,000	\$2,310,000	\$4,156,000	\$3,135,000	\$1,200,000
Building Permits Value, Institutional	\$0	\$0	\$0	\$0	\$365,000
Building Permits Value, Residential	\$1,487,000	\$1,085,000	\$1,273,000	\$726,000	\$437,000
Building Permits Value, Total	\$34,660,000	\$3,543,000	\$5,539,000	\$4,446,000	\$2,152,000
Total Housing Starts	17	9	12	8	5

Source: Statistics Canada 2000-2004 Building Permits (numbers may not add up due to rounding)

Total Housing Starts



Value of Building Permits



Dwellings

Occupied Private Dwellings by Type	1996	% of total	2001	% of total
Apartments	0	0.00%	0	0.00%
Detached Duplexes	0	0.00%	0	0.00%
Movable Dwellings	0	0.00%	210	23.33%
Other single attached house	0	0.00%	5	0.56%
Row and semi-detached house	0	0.00%	0	0.00%
Single-detached house	0	0.00%	685	76.11%
Total number of occupied private dwellings	0	0.00%	900	100.00%
Private dwellings, owned	0	0.00%	825	91.67%
Private Dwellings, rented	0	0.00%	100	11.11%

Source: Statistics Canada 1996 & 2001 Census (numbers may not add up due to rounding)

Private Dwellings by Period of Construction	# of Dwellings	% of total
Period of construction, before 1946	55	5.98%
Period of construction, 1946 - 1960	140	15.22%
Period of construction, 1961 - 1970	145	15.76%
Period of construction, 1971 - 1980	255	27.72%
Period of construction, 1981 - 1990	200	21.74%
Period of construction, 1991 - 2001	125	13.59%
Total number of private dwellings constructed	920	100.00%

Source: Statistics Canada 2001 Census (numbers may not add up due to rounding)

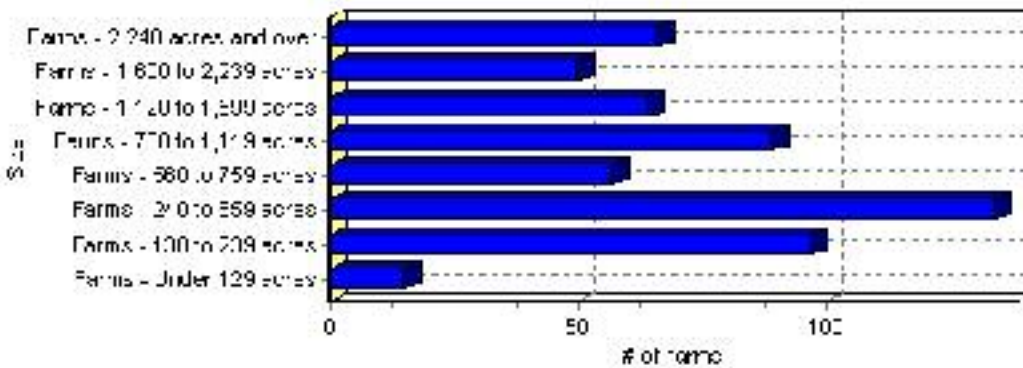
Farming

Clear Hills County Total Farm Area : 570 acres

Farms by Total Farm Area (2001)	# of Farms	% of total
Farms - Under 129 acres	15	2.62%
Farms - 130 to 239 acres	97	16.96%
Farms - 240 to 559 acres	134	23.43%
Farms - 560 to 759 acres	57	9.97%
Farms - 760 to 1,119 acres	89	15.56%
Farms - 1,120 to 1,599 acres	64	11.19%
Farms - 1,600 to 2,239 acres	50	8.74%
Farms - 2,240 acres and over	66	11.54%
Total number of farms reporting	572	100.00%

Source: Statistics Canada 2001 Census of Agriculture(numbers may not add up due to rounding)

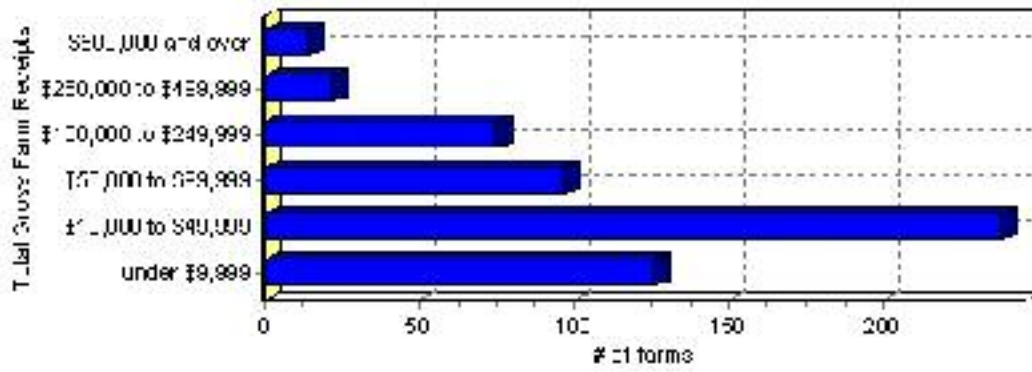
of Farms by Total Farm Area



Farms by Total Gross Farm Receipts - 2001	# of Farms	% of total
Farms gross farm receipts - under \$9,999	126	22.03%
Farms gross farm receipts - \$10,000 to \$49,999	238	41.61%
Farms gross farm receipts - \$50,000 to \$99,999	97	16.96%
Farms gross farm receipts - \$100,000 to \$249,999	75	13.11%
Farms gross farm receipts - \$250,000 to \$499,999	22	3.85%
Farms gross farm receipts - \$500,000 and over	14	2.45%
Total number of farms reporting	572	100.00%

Source: Statistics Canada 2001 Census of Agriculture(numbers may not add up due to rounding)

Total Gross Farm Receipts

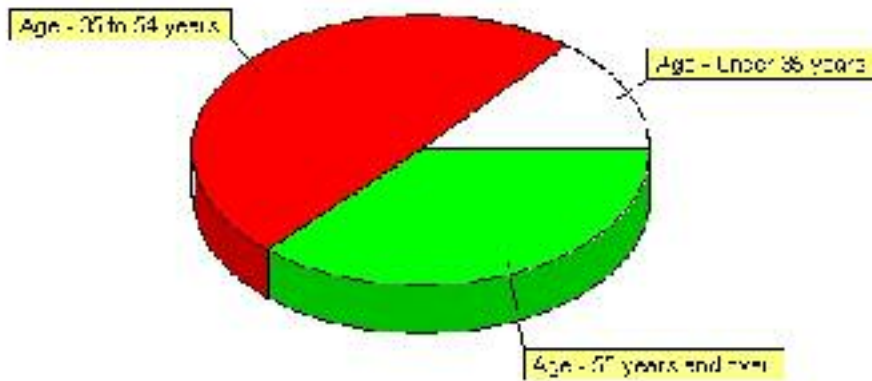


Farming, Continued

Characteristics of Farm Operators	#	%
Age - Under 35 years	110	13.92%
Age - 35 to 54 years	390	49.37%
Age - 55 years and over	290	36.71%
Average age of operators	50	
Number of operators - Female	220	27.85%
Number of operators - Male	570	72.15%
Total number of operators reporting	790	100.00%

Source: Statistics Canada 2001 Census of Agriculture(numbers may not add up due to rounding)

Age of Farm Operators



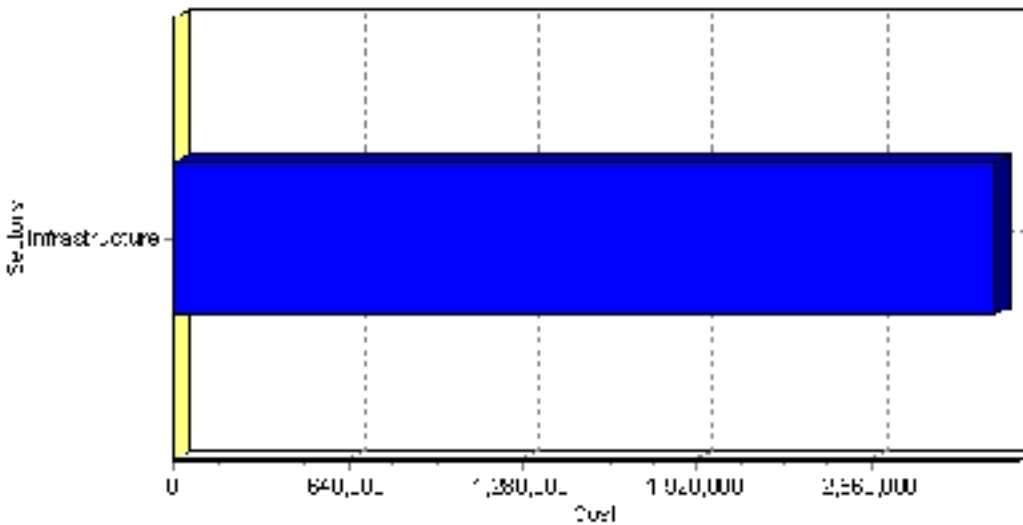
Projects

Summary of Projects in Clear Hills County as of September 2006

Project Sector	Number of Projects	Project Cost
Infrastructure	4	\$3,014,000
Total	4	\$3,014,000

This inventory lists projects in Alberta that have recently been completed, are under construction, or are proposed to start construction. Not all projects are listed due to reasons of confidentiality and/or due to information not being available at the time of printing. Project data is obtained from public information sources, where possible, this data has been verified with the project proponent/developer, users of the Inventory may wish to confirm project data with the proponent/developer. The inventory does not breakdown project expenditures by any given year. The cost of a project is the value of expenditures expected over all phases of project construction, which may span over two or more years. Cost of projects listed in the Inventory are estimated values only. Source: Alberta Economic Development, 2004.

Value of Projects by Sector (as of September 2006)



Project Status	Number of Projects	Project Cost
Announced	1	\$770,000
Completed	2	\$1,294,000
Under Construction	1	\$950,000
Total	4	\$3,014,000

This inventory lists projects in Alberta that have recently been completed, are under construction, or are proposed to start construction. Not all projects are listed due to reasons of confidentiality and/or due to information not being available at the time of printing. Project data is obtained from public information sources, where possible, this data has been verified with the project proponent/developer, users of the Inventory may wish to confirm project data with the proponent/developer. The inventory does not breakdown project expenditures by any given year. The cost of a project is the value of expenditures expected over all phases of project construction, which may span over two or more years. Cost of projects listed in the Inventory are estimated values only. Source: Alberta Economic Development, 2004.

Largest Projects in Clear Hills County as of September 2006

Company Name	Project Description	Project Location	Project Cost	Construction Schedule	Status
Clear Hills County	Regrade - 730 From E Worsley School to 1st Speed Corner	Clear Hills County	\$1,000,000	2006-2006	Completed
Clear Hills County	Water & Waste Services	Clear Hills County (Cleardale)	\$950,000	2006-2006	Under Construction
Clear Hills County	Regrade on Twp Road 830	Clear Hills County	\$770,000	2006-2006	Announced
Clear Hills County	Regrade & New Construction - David Thompson Road (Range Road 34)	Clear Hills County	\$294,000	2006-2006	Completed

Disclaimer: Information in this profile has been provided from a variety of external sources. Although every effort has been made to ensure the accuracy, currency and reliability of the content and data, AlbertaFirst.com Ltd. accepts no responsibility in this regard.

© AlbertaFirst.com Ltd., 2006.